

Quick Start Guide

Installation der Hardware | Installation du matériel | Installazione hardware
Maskinvaruinstallation | Laitteiston asennus

Hardware Installation

1

Connect using the gray telephone cable.
Schließen Sie das graue Telefonkabel an.
Connectez en utilisant le câble téléphonique gris.
Collegare con il cavetto telefonico grigio.
Anslut med den grå telefonkabeln.
Kytke harmaa puhelinkaapeli.

2

Connect using yellow Ethernet cable.
Schließen Sie das gelbe Netzwerkkabel an.
Connectez en utilisant le câble Ethernet jaune.
Collegare con il cavetto Ethernet giallo.
Anslut med den gula Ethernet-kabeln.
Kytke keltainen Ethernet-kaapeli.

3

Connect 3G dongle.
3G dongle einstecken.
Connectez la clé 3G.
Collegare l'addatore 3G.
Anslut 3G sticka.
Yhdistä 3G tikku.

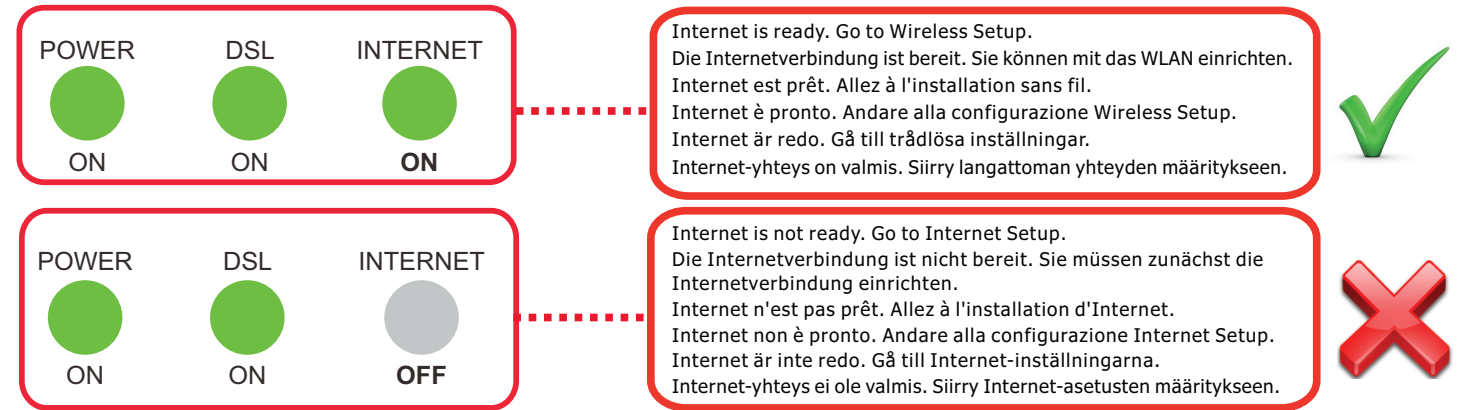
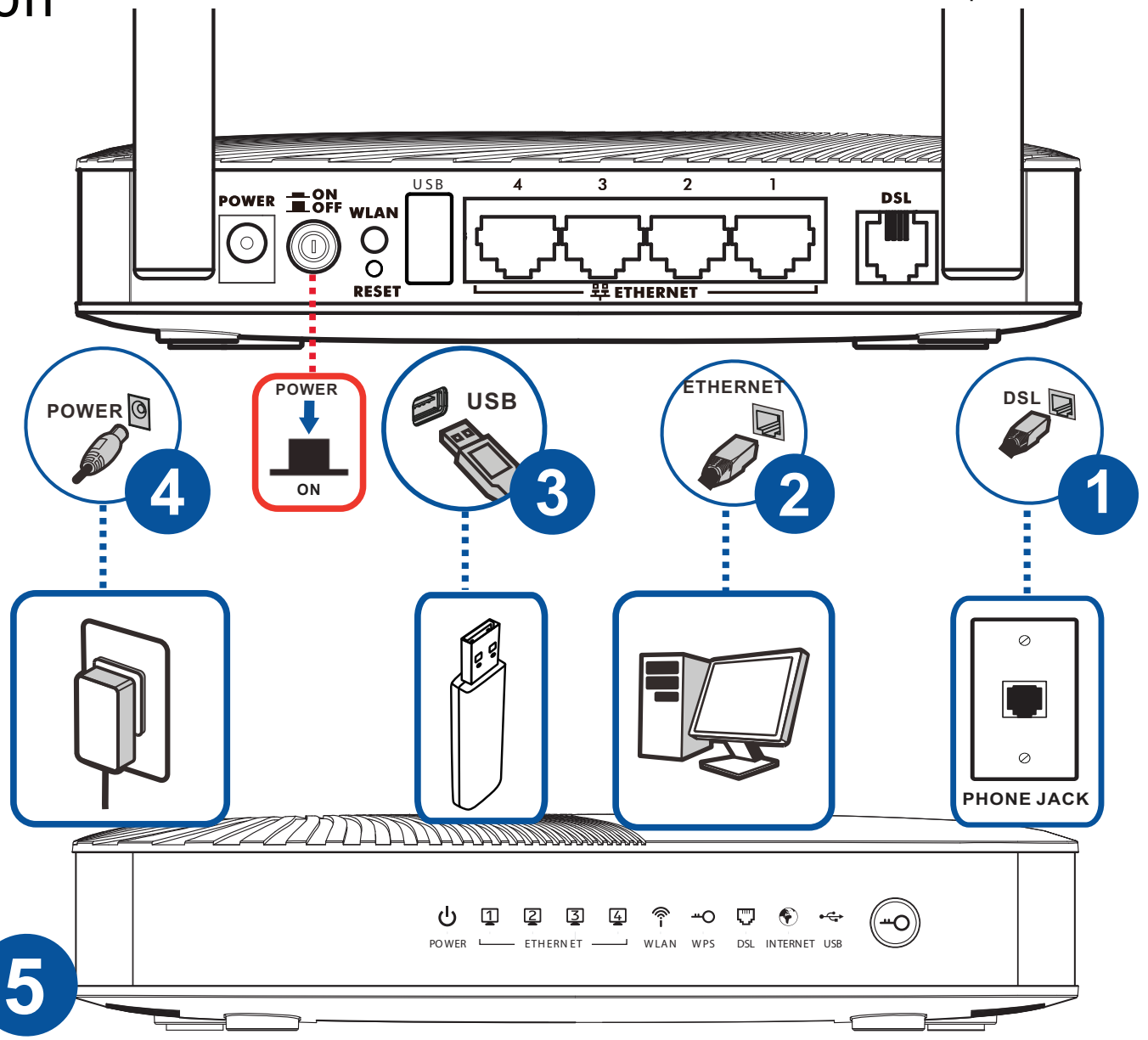
Optional

4

Connect power and turn on.
Schließen Sie das Stromkabel an, und schalten Sie das Gerät ein.
Branchez l'alimentation et allumez.
Collegare l'alimentazione e accendere.
Anslut strömmen och slå på enheten.
Kytke virtakaapeli ja kytke virta päälle.

5

Check LEDs.
Prüfen Sie die LEDs.
Consultez les voyants.
Controllare i LED.
Kontrollera LED-lamporna.
Tarkista merkkivalot.

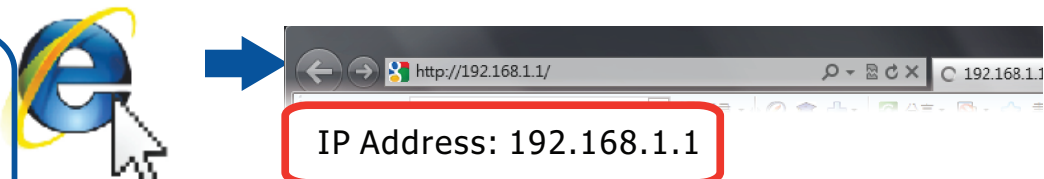


Internet Setup

Einrichten des Internets | Installation D'Internet | Configurazione Internet
Internet-inställningar | Internet-asetusten määrittys

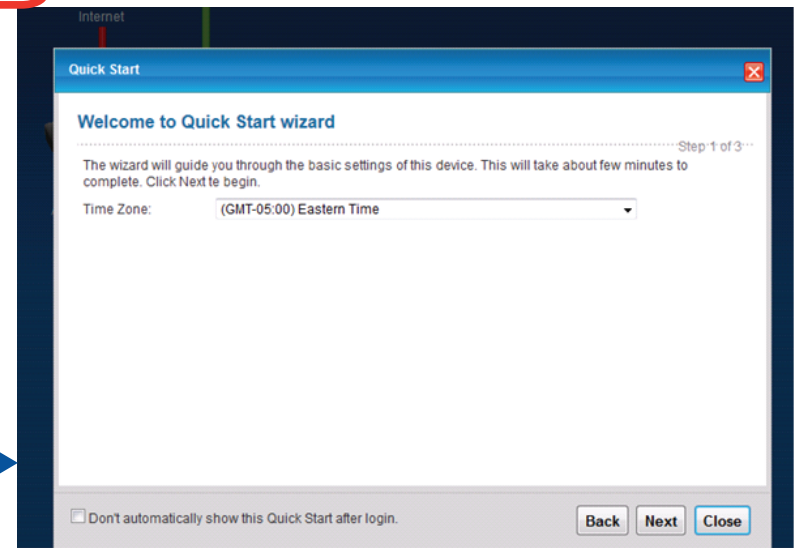
1

Enter IP address in web browser.
Geben Sie die IP-Adresse in den Webbrowser ein.
Saisissez l'adresse IP dans le navigateur Web.
Inserire l'indirizzo IP nel web browser.
Ange IP-adressen i webbläsaren.
Kirjoita IP-osoite verkkoselaimeen.



2

Enter user name and password.
Follow the wizard setup.
Geben Sie den Benutzernamen und das Kennwort ein.
Folgen Sie den Anweisungen auf dem Bildschirm.
Saisissez le nom d'utilisateur et le mot de passe.
Suivez l'assistant d'installation.
Inserire nome utente e password.
Seguire la procedura guidata.
Ange användarnamn och lösenord.
Följ installationsguiden.
Kirjoita käyttäjänimi ja salasana.
Noudata ohjattua määrittystoimintoa.



Wireless Setup

Wireless Setup | Installation sans fil | Configurazione Wireless
Trådlös installation | Langattoman yhteyden määrittäminen

WPS

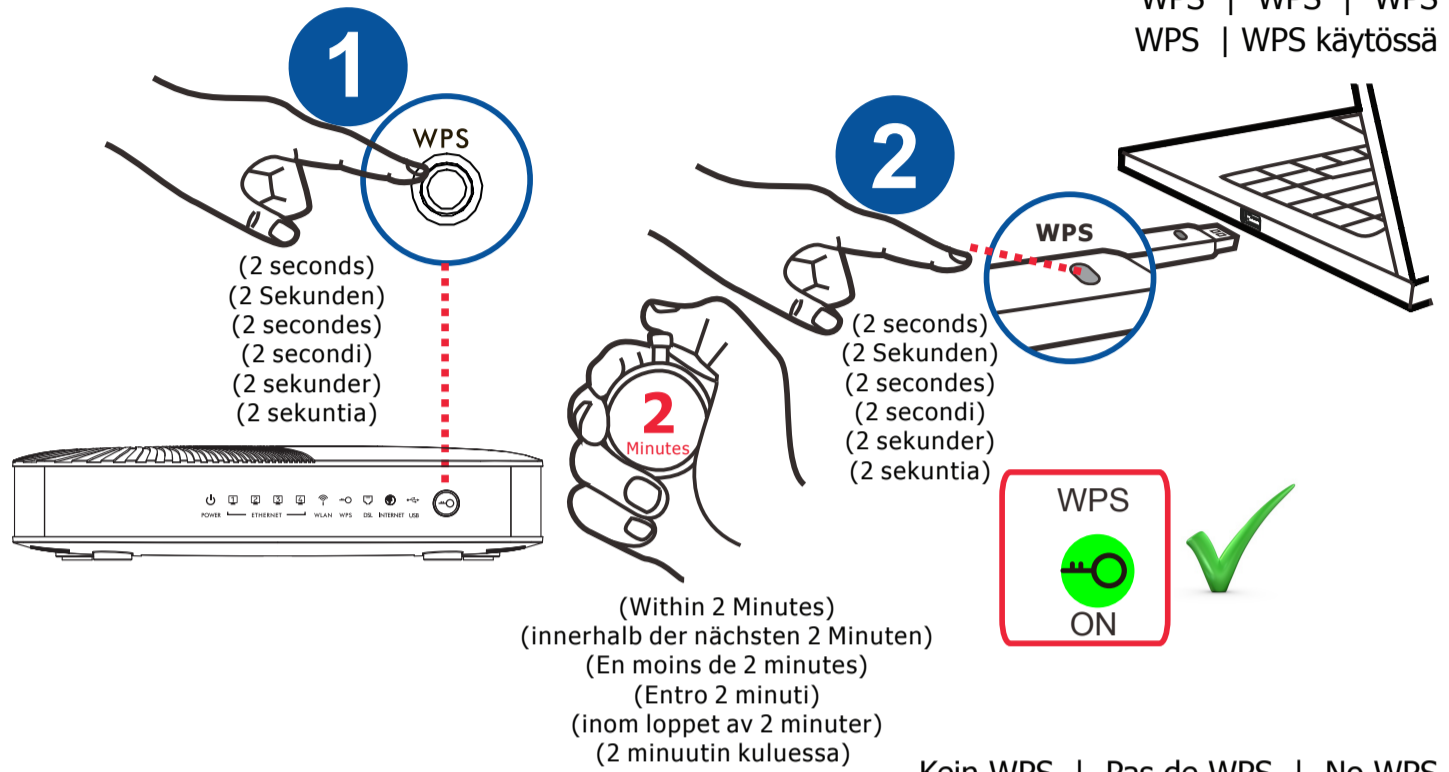
WPS | WPS | WPS
WPS | WPS käytössä

1

Press the WPS Button on the device.
Drücken Sie auf die WPS-Taste des Geräts.
Appuyez sur le bouton WPS sur l'appareil.
Premere il pulsante WPS sul dispositivo.
Tryck på enhetens WPS-knapp
Paina WPS-painiketta laitteessa.

2

Press the WPS Button on the client.
Drücken Sie auf die WPS-Taste des Client-Geräts.
Appuyez sur le bouton WPS sur le client.
Premere il pulsante WPS sul client.
Tryck på klientens WPS-knapp.
Paina WPS-painiketta verkkoon liitettävässä laitteessa.



No WPS

Kein WPS | Pas de WPS | No WPS
Ingen WPS | WPS ei käytössä

1

The SSID and Wireless key are on the device sticker.
Die SSID und der Schlüssel für die WLAN-Verbindung befinden sich auf dem Etikett am Gerät.
Le SSID et la clé sans fil se trouvent sur l'étiquette de l'appareil.
La chiave Wireless e SSID sono riportati sull'etichetta del dispositivo.
SSID och den trådlösa nyckeln finns på enhetens etikett.
SSID-tunnus ja langattoman verkon avain lukevat laitteeseen kiinnitettyssä tarrassa.

2

Find the device with this SSID. Enter Wireless key to connect.
Suchen Sie das Gerät mit dieser SSID. Geben Sie den Schlüssel für die WLAN-Verbindung ein.
Trouvez l'appareil avec ce SSID. Saisissez la clé sans fil pour vous connecter.
Individuare il dispositivo con questo SSID. Immettere la chiave Wireless per effettuare il collegamento.
Sök enheten med detta SSID. Ange trådlös nyckel för att ansluta.
Etsi laite SSID-tunnuksella. Muodosta yhteys syöttämällä langattoman verkon avain.



Declarations

English	Deutsch (German)	Español (Spanish)	Français (French)
<p>Environmental product declaration</p> <p>RoHS Directive 2011/65/EU WEEE Directive 2012/19/EU PPW Directive 94/62/CE REACH Regulation (EC) No. 1907/2006 ErP Directive 2009/125/EC</p> <p>Name/ titre : Raymond Huang / Quality & Customer Service Division Assistant VP Signature : Raymond Huang Date (dd/mm/yyyy) : 01/10/2013</p> <p>RoHS VERIFIED</p>	<p>Produkt-Umweltdeklaration</p> <p>RoHS Richtlinie 2011/65/EU WEEE Richtlinie 2012/19/EU PPW Richtlinie 94/62/EG REACH VERORDNUNG (EG) Nr. 1907/2006 ErP Richtlinie 2009/125/EG</p> <p>Name/ titre : Raymond Huang / Quality & Customer Service Division Assistant VP Unterschrift : Raymond Huang Datum (jjj/mm/tt) : 2013/10/01</p> <p>RoHS VERIFIED</p>	<p>Declaraciones Ambientales de Producto</p> <p>RoHS Directiva 2011/65/UE WEEE Directiva 2012/19/UE PPW Directiva 94/62/CE REACH REGLAMENTO (CE) nº 1907/2006 ErP Directiva 2009/125/CE</p> <p>Nombre/ título : Raymond Huang / Quality & Customer Service Division Assistant VP Firma : Raymond Huang Fecha (aaa/mm/dd) : 2013/10/01</p> <p>RoHS VERIFIED</p>	<p>Profil environnemental de produit</p> <p>RoHS Directive 2011/65/UE WEEE Directive 2012/19/UE PPW Directive 94/62/CE REACH RÉGLEMENT (CE) N° 1907/2006 ErP Directive 2009/125/CE</p> <p>Nom/ titre : Raymond Huang / Quality & Customer Service Division Assistant VP Signature : Raymond Huang Date (aaaa/mm/jj) : 2013/10/01</p> <p>RoHS VERIFIED</p>
<p>Dichiarazione ambientale di prodotto</p> <p>RoHS Direttiva 2011/65/UE WEEE Direttiva 2012/19/UE PPW Direttiva 94/62/CE REACH REGOLAMENTO (CE) n. 1907/2006 ErP Direttiva 2009/125/CE</p> <p>Nome/ titolo : Raymond Huang / Quality & Customer Service Division Assistant VP Firma : Raymond Huang Data (aaaa/mm/gg) : 2013/10/01</p> <p>RoHS VERIFIED</p>	<p>Milieuproductverklaring</p> <p>RoHS Richtlijn 2011/65/EU WEEE Richtlijn 2012/19/EU PPW Richtlijn 94/62/EG REACH Verordening (EG) nr. 1907/2006 ErP Richtlijn 2009/125/EG</p> <p>Naam/ titel : Raymond Huang / Quality & Customer Service Division Assistant VP Handtekening : Raymond Huang Datum (dd/mm/jaar) : 01/10/2013</p> <p>RoHS VERIFIED</p>	<p>Miljöproduktdeklaration</p> <p>RoHS Direktiv 2011/65/EU WEEE Direktiv 2012/19/EU PPW Direktiv 94/62/EG REACH Förordning (EG) nr 1907/2006 ErP Direktiv 2009/125/EG</p> <p>Namn/ titel : Raymond Huang / Quality & Customer Service Division Assistant VP Namnteckning : Raymond Huang Datum (dd/mm/åååå) : 01/10/2013</p> <p>RoHS VERIFIED</p>	<p>Standardiin perustuva ympäristötutusteloste</p> <p>RoHS Direktiiv 2011/65/EU WEEE Direktiiv 2012/19/EU PPW Direktiiv 94/62/EY REACH ASETUS (EY) N:o 1907/2006 ErP Direktiiv 2009/125/EY</p> <p>Nimi/ otsikko : Raymond Huang / Quality & Customer Service Division Assistant VP Allekirjoitus : Raymond Huang Päivämäärä (pp/kk/vvvv) : 01/10/2013</p> <p>RoHS VERIFIED</p>

ZyXEL
www.zyxel.com

Declaration of Conformity

Product information
Product Name : Wireless N ADSL2+ 4-port Gateway with USB
Model Number : AMG1312-T10B

Produced by
Company Name : ZyXEL Communications Corporation
Company Add. : No. 2, Gongye E. 9th Road Hsinchu Science Park, Hsinchu, Taiwan

to which this declaration relates, is in conformity with the following standards or other normative documents:

EMC: EN 300 328 V1.7.1:2006-10 EN 301 489-1 V1.9.2:2011-09 EN 301 489-17 V2.2.1:2012-09 EN 55022:2010+AC:2011 EN 61000-3-2:2006+A1:2009+A2:2009 EN 61000-3-3:2008 EN 55024:2010 EN 62311:2008	Safety: EN 60950-1:2006+A11:2009+A1: 2010+A12:2011 ErP: EN 50564:2011 (IEC 62301 Modified) RoHS 2:EN 50581:2012
---	--

The Product herewith complies with requirements of the following Directive :
The Low Voltage Directive 2006/95/EC , The EMC Directive 2004/108/EC,
The R&TTE Directive 1999/5/EC , The ErP Directive 2009/125/EC,
The RoHS Directive 2011/65/EU and carries the CE Marking accordingly.

The TCF-File is located at:
Local contact for regulatory topics only :

Company Address : Hsinchu Office : No. 2, Gongye E. 9th Road Hsinchu Science Park,
Hsinchu Taiwan
: No. 2, Innovation Road II, Science-Park,Hsin-chu,300
Taiwan
TAIPEI Office :11F., NO.223, SEC. 3, BEIXIN RD., XINDIAN DIST., NEW
TAIPEI CITY 23143, TAIWAN (R.O.C.)

Person is responsible for marking this declaration:

Raymond Huang Name (Full Name) 2013-11-8	Assistant VP, Quality & Customer Service Division Position/ Title Raymond Huang
--	--

Open Source Licenses

This product contains in part some free software distributed under GPL license terms and/or GPL like licenses. Open source licenses are provided with the firmware package. You can download the latest firmware at www.zyxel.com. If you cannot find it there, contact your vendor or ZyXEL Technical Support at support@zyxel.com.tw.

To obtain the source code covered under those Licenses, please contact your vendor or ZyXEL Technical Support at support@zyxel.com.tw

EU Importer: ZyXEL Communications A/S | Generatorvej 8D, 2730 Herlev | <http://www.zyxel.dk>

US Importer: ZyXEL Communications, Inc | 1130 North Miller Street Anaheim, CA 92806-2001 | <http://www.us.zyxel.com>

See the User's Guide on the CD or at www.zyxel.com for more information.

a) Network standby power consumption < 12W and,
b) Off mode power consumption < 0.5W