



Quick Installation Guide



TEW-638APB

H/W: V2

Table of Contents

English	1
1. Before You Start	1
2. Hardware Installation	2
Troubleshooting	8

1. Before You Start



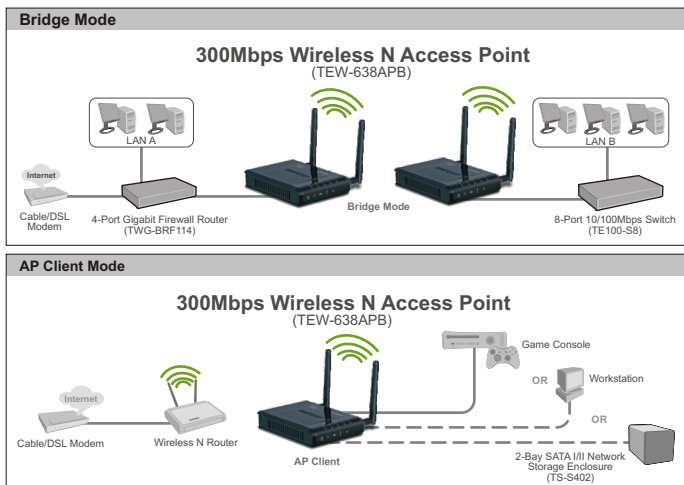
Package Contents

- TEW-638APB
- User's Guide CD-ROM
- Multi-Language Quick Installation Guide
- AC Power Adapter (12V DC, 1A)
- 1 RJ-45 cable

Installation Requirements

- Web Browser: Internet Explorer (6 or higher)
- A computer with a network adapter or wireless adapter properly installed.
- A router with an available network LAN port
- A RJ-45 network cable

Application



2. Hardware Installation

Note:

- 1: Locate an optimum location for the Access Point. The best place for the Access Point is usually at the center of your wireless network.
- 2: Disable any anti-virus and firewall programs before starting hardware installation.

For Windows Users

1. Insert Driver CD-ROM.

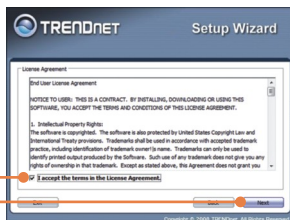
2. Click **Run Setup.exe** (Windows Vista only)



3. Click **Setup Wizard**.



4. Click **I accept the terms in the License Agreement** and then click **Next**.



5. Connect the provided RJ-45 cable from a LAN port on your Router to the LAN port on the TEW-638APB. Then click **Next**.

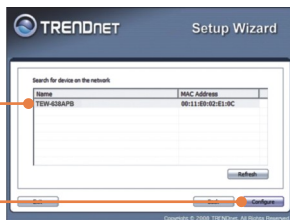


6. Connect a RJ-45 cable from a LAN port on your Router to the Ethernet port on your computer.

7. Connect the AC Power Adapter to the Access Point and then to a power outlet and then click **Next**.



8. Select the TEW-638APB from the list and then click **Configure**.



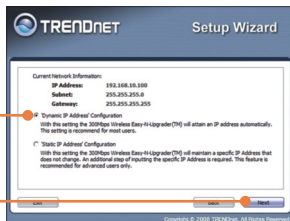
9. Enter a password and then click **Login**. The default password is **admin**.



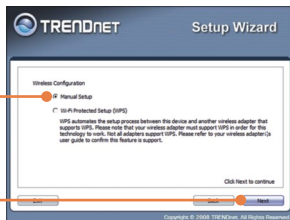
10. Select **Access Point** and then click **Next**.
- Note: For AP Client setup, please refer to the User's Guide for step by step instructions. The User's Guide can be found on this product's CD-ROM.



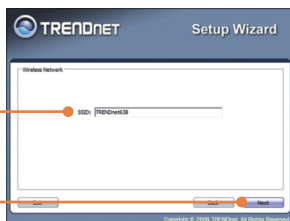
11. Select **Dynamic IP Address Configuration** and then click **Configure**.



12. Select **Manual setup** and then click **Next**.



13. Enter a SSID and then click **Next**.
By default, the SSID is **TRENDnet638**.



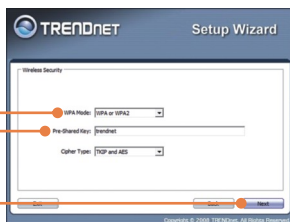
14. Select the desired **Wireless Mode** and then click **Next**.



15. Select a Security Mode and then click **Next** (example shows WPA-PSK).



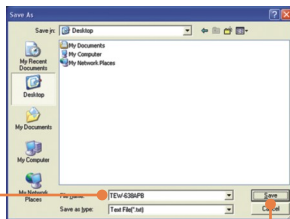
16. Select the desired **WPA** mode, enter characters for your Pre-Shared key, keep **Cipher Type** as **TKIP and AES** and then click **Next**. For WPA-PSK or WPA2-PSK, the Pre-Shared Key must be between 8 and 63 ASCII or 64 HEX characters. Make sure to copy down the Pre-Shared Key.



17. Click **Save** (optional).



18. Give the file a name, then click **Save** (optional).



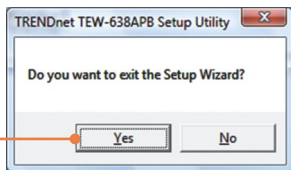
19. Click **Confirm** to apply the settings.



20. Click **Exit**.



21. Click **Yes** to exit.



Note: To connect a wireless computer to the TEW-638APB, refer to Question 1 in the Troubleshooting section.

Your configuration is now complete.

For detailed information regarding the **TEW-638APB's** configuration and advanced settings, please refer to the Troubleshooting section, User's Guide CD-ROM, or TRENDnet's website at <http://www.trendnet.com>.

Register Your Product

To ensure the highest level of customer service and support, please take a moment to register your product Online at: www.trendnet.com/register
Thank you for choosing TRENDnet

Q1: All the settings are correct, but I can not make a wireless connection to the Access Point.

A1: First, double check that the wireless LED on the Access Point is lit. Second, power cycle the Access Point. Unplug the power to the Access Point. Wait 15 seconds, then plug the power back in. Third, contact the manufacturer of your wireless network adapter. Make sure the wireless network adapter is configured with the proper SSID. The default SSID of the Access Point is **TRENDnet638**. If you have enabled any encryption on the Access Point, make sure to configure the wireless network adapter with the same Pre-shared key.

Q2: I am trying to connect additional wireless adapters, but I don't remember the encryption (network) key. What should I do?

A2: From a wired computer, log on to the access point configuration page. Click **Wireless -> Security**. The encryption key will be listed here.

Q3: I have a wireless adapter that supports WiFi Protected Setup (WPS) push button setup. How do I setup WPS between the TEW-638APB and my wireless adapter?

A3: First, press on the **WPS** button on the front of the TEW-638APB for 10 seconds. Second, refer to your wireless adapters for instructions on setting up WPS.

Q4: I followed the Quick Installation Guide and setup a new password. When I log in to the browser configuration an access error message appears. What should I do?

A4: The default user name is **admin** and the default password is **admin**. When you log in to the browser configuration for the first time, make sure to enter **admin** for user name. Do not leave the user name field blank.

Q5: How do I configure AP mode on the TEW-638APB?

A5: Please refer to the User Guide. The User Guide is on the Utility CD-ROM drive.

If you still encounter problems or have any questions regarding the **TEW-638APB**, please contact TRENDnet's Technical Support Department.

Declaration of Conformity



Company Information:

Company Name:
TRENDware International, Inc.

Company Address:
20675 Manhattan Place
Torrance, CA 90501
USA

Product Information:

Product Description:
300Mbps Wireless N Access Point

Model Number:
TEW-638APB

Brand name:
TRENDnet



Technical Standards:

EN 300 328 V1.7.1: 10-2006
EN 301 489-1 V1.8.1: 04-2008
EN 301 489-17 V1.3.2: 04-2008
EN 50385: 2002
EN 60950-1: 2006

Declaration:

The product is herewith confirmed to comply with the requirements of Directive 1999/5/EC of the Council (European Parliament) on the radio and telecommunications terminal equipment.

I hereby declare that the products and devices mentioned above are consistent with the standards and provisions of the guidelines.

Sonny Su

Name (Full Name)

April 1, 2009

Date

Director of Technology

Position / Title



Legal Signature

GPL/LGPL General Information

This TRENDnet product includes free software written by third party developers. These codes are subject to the GNU General Public License ("GPL") or GNU Lesser General Public License ("LGPL"). These codes are distributed WITHOUT WARRANTY and are subject to the copyrights of the developers. TRENDnet does not provide technical support for these codes. The details of the GNU GPL and LGPL are included in the product CD-ROM.

Please also go to (<http://www.gnu.org/licenses/gpl.txt>) or (<http://www.gnu.org/licenses/lgpl.txt>) for specific terms of each license.

The source codes are available for download from TRENDnet's web site (http://trendnet.com/downloads/list_gpl.asp) for at least three years from the product shipping date.

You could also request the source codes by contacting TRENDnet.

20675 Manhattan Place, Torrance, CA 90501, USA. Tel: +1-310-961-5500 Fax: +1-310-961-5511

Informations générales GPL/LGPL

Ce produit TRENDnet comprend un logiciel libre écrit par des programmeurs tiers. Ces codes sont sujet à la GNU General Public License ("GPL" Licence publique générale GNU) ou à la GNU Lesser General Public License ("LGPL" Licence publique générale limitée GNU). Ces codes sont distribués SANS GARANTIE et sont sujets aux droits d'auteurs des programmeurs. TRENDnet ne fournit pas d'assistance technique pour ces codes. Les détails concernant les GPL et LGPL GNU sont repris sur le CD-ROM du produit.

Veuillez également vous rendre en (<http://www.gnu.org/licenses/gpl.txt>) ou en (<http://www.gnu.org/licenses/lgpl.txt>) pour les conditions spécifiques de chaque licence.

Les codes source sont disponibles au téléchargement sur le site Internet de TRENDnet web site (http://trendnet.com/downloads/list_gpl.asp) durant au moins 3 ans à partir de la date d'expédition du produit.

Vous pouvez également demander les codes source en contactant TRENDnet.

20675 Manhattan Place, Torrance, CA 90501, USA. Tel: +1-310-961-5500 Fax: +1-310-961-5511

Allgemeine Informationen zu GPL/LGPL

Dieses Produkt enthält die freie Software "netfilter/iptables" (© 2000-2004 netfilter project <http://www.netfilter.org>) und die freie Software "Linux_mtd" (Memory Technology Devices) Implementation (© 2000 David Woodhouse), erstmals integriert in Linux Version 2.4.0-test 3 v. 10.07.2000 (<http://www.kernel.org/pub/linux/kernel/v2.4/old-test-kernels/linux-2.4.0-test3.tar.bz2>), sowie weitere freie Software. Sie haben durch den Erwerb dieses Produktes keinerlei Gewährleistungsansprüche gegen die Berechtigten an der oben genannten Software erworben; weil diese die Software kostenfrei lizenzieren gewähren sie keine Haftung gemäß unten abgedruckten Lizenzbedingungen. Die Software darf von jedermann im Quell- und Objektcode unter Beachtung der Lizenzbedingungen der GNU General Public License Version 2, und GNU Lesser General Public License (LGPL) vervielfältigt, verbreitet und verarbeitet werden. Die Lizenz ist unten im englischsprachigen Originalwortlaut wiedergegeben. Eine nichtoffizielle Übersetzung in die deutsche Sprache finden Sie im Internet unter (<http://www.gnu.de/documents/gpl-2.0.de.html>). Eine allgemeine öffentliche GNU Lizenz befindet sich auch auf der mitgelieferten CD-ROM.

Sie können Quell- und Objektcode der Software für mindestens drei Jahre auf unserer Homepage www.trendnet.com im Downloadbereich (http://trendnet.com/langen/downloads/list_gpl.asp) downloadend. Sofern Sie nicht über die Möglichkeit des Downloads verfügen können Sie bei TRENDnet.

20675 Manhattan Place, Torrance, CA 90501 - U.S.A., Tel.: +1-310-961-5500, Fax: +1-310-961-5511 die Software anfordern.

Información general sobre la GPL/LGPL

Este producto de TRENDnet incluye un programa gratuito desarrollado por terceros. Estos códigos están sujetos a la Licencia pública general de GNU ("GPL") o la Licencia pública general limitada de GNU ("LGPL"). Estos códigos son distribuidos SIN GARANTÍA y están sujetos a las leyes de propiedad intelectual de sus desarrolladores. TRENDnet no ofrece servicio técnico para estos códigos. Los detalles sobre las licencias GPL y LGPL de GNU se incluyen en el CD-ROM del producto.

Consulte también el (<http://www.gnu.org/licenses/gpl.txt>) ó el (<http://www.gnu.org/licenses/lgpl.txt>) para ver las cláusulas específicas de cada licencia.

Los códigos fuentes están disponibles para ser descargados del sitio Web de TRENDnet

(http://trendnet.com/downloads/list_gpl.asp) durante por lo menos tres años a partir de la fecha de envío del producto.

También puede solicitar el código fuente llamando a TRENDnet.

20675 Manhattan Place, Torrance, CA 90501, USA. Tel: +1-310-961-5500 Fax: +1-310-961-5511

Общая информация о лицензиях GPL/LGPL

В состав данного продукта TRENDnet входит бесплатное программное обеспечение, написанное сторонними разработчиками. Это ПО распространяется на условиях лицензий GNU General Public License ("GPL") или GNU Lesser General Public License ("LGPL"). Программы распространяются БЕЗ ГАРАНТИИ и охраняются авторскими правами разработчиков. TRENDnet не оказывает техническую поддержку этого программного обеспечения. Подробное описание лицензий GNU GPL и LGPL можно найти на компакт-диске, прилагаемом к продукту.

В пункте (<http://www.gnu.org/licenses/gpl.txt>) и (<http://www.gnu.org/licenses/lgpl.txt>) изложены конкретные условия каждой из лицензий.

Исходный код программ доступен для загрузки с веб-сайта TRENDnet (http://trendnet.com/downloads/list_gpl.asp) в течение, как минимум, трех лет со дня поставки продукта.

Кроме того, исходный код можно запросить по адресу TRENDnet.

20675 Manhattan Place, Torrance, CA 90501, USA. Tel: +1-310-961-5500 Fax: +1-310-961-5511

GPL/LGPL inform aoes Gerais

Este produto TRENDnet inclui software gratuito desenvolvido por terceiros. Estes c digos est o sujeitos ao GPL (GNU General Public License) ou ao LGPL (GNU Lesser General Public License). Estes c digos s o distribuidos SEM GARANTIA e est o sujeitos aos direitos autorais dos desenvolvedores. TRENDnet n o presta suporte t cnico a estes c digos. Os detalhes do GNU GPL e do LGPL est o no CD-ROM do produto.

Favor acessar <http://www.gnu.org/licenses/gpl.txt> ou <http://www.gnu.org/licenses/lgpl.txt> para os termos espec ficos de cada licena.

Os c digos fonte est o dispon veis para download no site da TRENDnet (http://trendnet.com/langen/downloads/list_gpl.asp) por pelo menos tr s anos da data de embarque do produto.

Voc  tamb m pode solicitar os c digos fonte contactando TRENDnet, 20675 Manhattan Place, Torrance, CA 90501, USA. Tel: +1-310-961-5500, Fax: +1-310-961-5511.

GPL/LGPL  ldinformatsioon

See TRENDneti toode sisaldab vaba tarkvara, mis on kirjutatud kolmanda osapoolle poolt. Koodid on allutatud GNU (General Public License)  ldise Avaliku Litsentsi (GPL) v i GNU (Lesser General Public License) ("LGPL") V hem  ldine Avalik Litsentsiga. Koode vahendatakse ILMA GARANTIITA ja need on allutatud arendajate poolt. TRENDnet ei anna koodidele tehnilist tuge. Detailsemat infot GNU GPL ja LGPL kohta leiata toote CD-ROMil. Infot m lema litsentsi spetsiifiliste terminite kohta leiata (<http://www.gnu.org/licenses/gpl.txt>) v i (<http://www.gnu.org/licenses/lgpl.txt>).

Infot m lema litsentsi spetsiifiliste terminite kohta leiata (<http://www.gnu.org/licenses/gpl.txt>) v i

(<http://www.gnu.org/licenses/lgpl.txt>). L htekoodi on v imalik alla laadida TRENDneti kodulehelt

(http://trendnet.com/langen/downloads/list_gpl.asp) kolme aasta jooksul alates toote k ttesaamise kuup evast.

Samuti v ite l htekoodi paluda TRENDneti'lt, 20675 Manhattan Place, Torrance, CA 90501, USA. Tel: +1-310-961-5500, Fax: +1-310-961-5511.

Certifications

This equipment has been tested and found to comply with FCC and CE Rules.

Operation is subject to the following two conditions:

- (1) This device may not cause harmful interference.
- (2) This device must accept any interference received. Including interference that may cause undesired operation.



Waste electrical and electronic products must not be disposed of with household waste. Please recycle where facilities exist. Check with you Local Authority or Retailer for recycling advice.



NOTE: THE MANUFACTURER IS NOT RESPONSIBLE FOR ANY RADIO OR TV INTERFERENCE CAUSED BY UNAUTHORIZED MODIFICATIONS TO THIS EQUIPMENT. SUCH MODIFICATIONS COULD VOID THE USER'S AUTHORITY TO OPERATE THE EQUIPMENT.

ADVERTENCIA

En todos nuestros equipos se mencionan claramente las caracter sticas del adaptador de alimentaci n necesario para su funcionamiento. El uso de un adaptador distinto al mencionado puede producir da os f sicos y/o da os al equipo conectado. El adaptador de alimentaci n debe operar con voltaje y frecuencia de la energ a el ctrica domiciliar existente en el pa s o zona de instalaci n.



Product Warranty Registration

Please take a moment to register your product online.
Go to TRENDnet's website at <http://www.trendnet.com/register>

TRENDnet[®]
20675 Manhattan Place
Torrance, CA 90501
USA