

Quick Installation Guide

Hurricane 9000G

Wireless 802.11g ADSL Ethernet Modem/Router (Version 1.0)

STEP 1: HARDWARE CONNECTION



- 1.1 Power off the computer and the ADSL Modem
- 1.2 Connect the RJ-45 (Ethernet) cable from the ADSL Modem's LAN port to the computer network card LAN port
- 1.3 Connect the RJ-11 (telephone) cable from the ADSL Modem's LINE port to the wall phone socket, OR
- 1.4 Connect the RJ-11 (telephone) cable from the ADSL Modem's LINE port to the Microfilter's DSL port as shown in the above diagram
- 1.5 Connect the power adapter to the power socket

STEP 2: CONFIGURING THE COMPUTER

IMPORTANT!

Please ensure that you have installed the Network Card and TCP/IP in your computer

2a CONFIGURE TCP/IP SETTINGS FOR WINDOWS® 95/98/98SE/ME

Go to Control Panel → Network → Select TCP/IP of your LAN card → Properties
Go to IP Address → Select Obtain an IP address automatically
Click OK and the system will prompt to restart the Computer

2b CONFIGURE TCP/IP SETTINGS FOR WINDOWS® 2000/XP

Go to Control Panel → Select Network and Internet Connections → Click on the Network Connections Icon
Select the Local Area Connection icon for the applicable Ethernet adapter → Right click and select Properties
Select Internet Protocol (TCP/IP) → Properties
Under General → Select Obtain an IP address automatically and Obtain DNS Server address automatically
Click OK

2c DISABLE PROXY SETTINGS

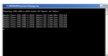
Windows Desktop → Right click Internet Explorer (IE) → Click Properties → Click Connections tab → Select Never Dial a Connection → Click LAN Settings... → Remove the tick (if there is any) for option box for Proxy Server → Click OK → Click OK again to exit

2.1 VERIFYING YOUR LOCAL NETWORK CONNECTION WITH H9000G

From Start → Run → Enter ping 192.168.1.254 -f → Click OK



If the connection from the computer to H9000G is normal, you will receive replies from H9000G



STEP 3: CONFIGURING H9000G USING WEB-BASED

NOTE: To configure H9000G, you must have IE5.0/Netscape 4.5 or above installed

3.1 ENTER WAN CONNECTION USERNAME/PASSWORD

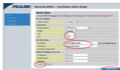
3.1a Start your Web Browser → Key in <http://192.168.1.254> at the URL/Address field

3.1b Key in the User name: admin and Password: password → Click on the OK button to login to the router



3.1c In the Quick Start page, refer to your ISP Broadband Service letter and key in your Username; E.g. prolink@singtel and Password: ***** → Click Submit → Save Config → Submit again

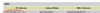
The rest of the settings you can leave them as default



Please enter the VPI/VCI settings according to your local ADSL ISP ATM VC (E.g. Singapore: VPI/VCI = 0/100; Malaysia: VPI/VCI = 0/35; Indonesia: VPI/VCI = 1/33; Sri Lanka: VPI/VCI = 8/35; Thailand: VPI/VCI = 1/32)

3.2 WAN/INTERNET CONNECTION STATUS

To verify that H9000G has been connected, Go to Status → WAN → an IP address should be assigned to you



3.3 WIRELESS CONFIGURATION

3.3a WITHOUT WEP SECURITY (DEFAULT)

Go to Configuration → Wireless → Basic Settings
The default SSID (Wireless workgroup name) is ProLink11g. You can change it to any unique name for identification. The default Channel is 6. All devices communicating with the device must use the same channel. The security (WEP Encryption) is set to Disabled by default. Wireless client/PC

should be able to connect to the Hurricane 9000G without doing any changes of these settings

3.3b TO SET SECURITY (WEP ENCRYPTION)

Security: Enable Encryption
Key Length: 64 bit Hex or 128 bit Hex

Keys: Enter the **Key**, you may want to enter **Key 1** as only one key will be used for every wireless connection.
(10 HEX Characters for 64 bit or 26 HEX Characters for 128 bit)

Use Hexadecimal characters only (The numbers 0-9 and letters a-f)

You may keep the rest of the settings as default

Click **Submit** --> **Save Config** --> **Submit** again to save your configurations



STEP 4: PROLINK WIRELESS ADAPTER CONFIGURATION

4.1 PROLINK WG1000 PCMCIA 802.11G WIRELESS CARD

4.1a After installing the Driver and Utility Program, you will see the Wireless LAN utility icon on your desktop



4.1b For Win XP user, go to Ctrl Panel --> Network Connections --> LAN or High Speed Internet --> Right Click the Wireless Network Connection --> Properties --> Wireless Networks --> Uncheck "Use Windows to configure my wireless network settings" --> OK



4.1c Double click the 802.11g Wireless LAN Utility icon on your desktop if you have enable the security encryption in the H9000G --> Click **Privacy** tab --> **WEP** --> **None** --> **Configure...**



4.1d For e.g. if your H9000G is enabled with 64bit (Hex) encryption --> **Key #1** --> Password: 1234567890
in the WEP Configuration --> Key Size: 40 bit (64bit) --> Select 1 --> Key in password: 1234567890 --> Authentication: Open System --> Key Format: Hex --> OK



4.1e Main tab --> Click **Rescan** --> Under SSID column: Select your H9000G SSID (Default: ProLink11g) --> Click **Connect** --> Click **OK**



4.2 PROLINK WG2000 USB 802.11G WIRELESS ADAPTER

4.2a After installing the Driver and Utility Program, you will see the Wireless LAN utility icon on your Desktop



4.2b For Win XP user, please refer to Step 4.1b first

4.2c Double click the 802.11b-g USB Wireless LAN Utility icon on your Desktop. Click **Refresh** --> Under SSID column: Select your H9000G SSID (Default: ProLink11g) --> Click **Connect** this site



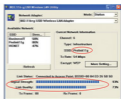
4.2d If you have enable the security encryption in the H9000G and you see the below message box (Use Previous WEP Setting) --> Select **NO**



4.2e For e.g. if your H9000G is enabled with 64bit (Hex) encryption --> **Key #1** --> Password: 1234567890
in the WEP Key Setting --> **Click Change** --> Key Length: 64bit --> Default Key ID: #1 --> Key Format: Hexadecimal --> Key Value: #1: 1234567890 --> **Apply**



4.2f Once connected, it will show the SSID connected (Default: ProLink11g) and indicate the Signal Strength and Link Quality of the connection



For More Product Information, Please Visit www.fida.com



Singapore: FIDA INTERNATIONAL (S) PTE LTD
Blk. 105 Bann Kang Road
#05-11/13 Singapore 339776
Tel: (65) 6392 5567 Fax: (65) 6392 5455

Malaysia: FIDA SYSTEMS (M) SDN BHD
29-05/1/31-47603 Subang Jaya,
Selangor Darul Ehsan Malaysia
Tel: (603) 8024 9151 Fax: (603) 8024 9161

Free Lifetime Technical Support Hotline:

(65) 6296 5455 (SINGAPORE)
(603) 8024 9151 (MALAYSIA)
9am - 5.45pm (MON-FRI)
9am - 1pm (SAT)
Closed on Sundays & Public Holidays

Online Technical Support:
support@fida.com

© Copyright 2005 PROLINK All Rights Reserved. PROLINK is manufactured under the authority of FIDA INTERNATIONAL (S) PTE LTD. All brands or product names are either trademarks or registered trademarks of their respective owners.