

1 Connect

1. Select a location for your Philips ADSL Wireless Base Station

Install the ADSL Wireless Base Station near your PC or another location where you have easy access. Keep ethernet cables away from power cords and other sources of electrical interference. Place the ADSL Wireless Base Station, with the antenna in upright position, in a location where air can circulate freely around it.

2. Plug the Power Supply into an appropriate electrical outlet

Connect the other end to the Power Input on the back side of the ADSL Wireless Base Station. The LED light (PWR) should come on solid green.

3. Connect the ADSL Wireless Base Station to your ADSL RJ11 wall jack

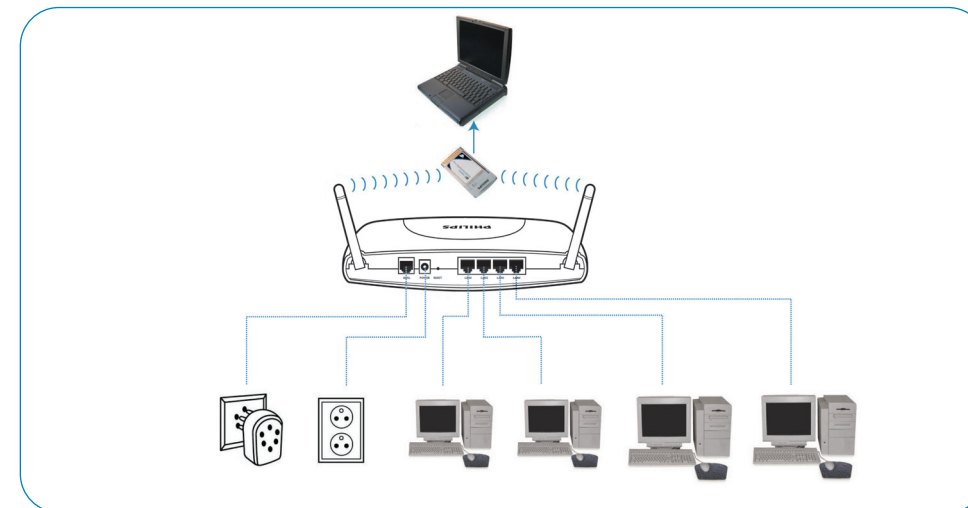
Plug one end of the black RJ-11 Telephone Cable into the port labeled "ADSL" on the ADSL Wireless Base Station back panel until you feel it click. Insert the other end of the telephone cable into the telephone jack (or filter/ splitter) connected to your ADSL service. The ADSL light should blink for up to two minutes and then come on solid green.

4. Connect the Wireless Base station + ADSL Modem to your computer

Connect one end of the RJ-45 Ethernet Cable to your PC's Ethernet port and the other end to one of the LAN ports of the ADSL Wireless Base Station. The LAN indicator light should come on solid green for the port where you connected your Ethernet cable.

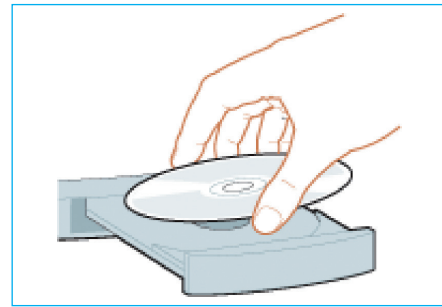
Note: Users with an existing Wi-Fi network should preform the initial installation process using the provided ethernet cable.

SNA6500 Rear View



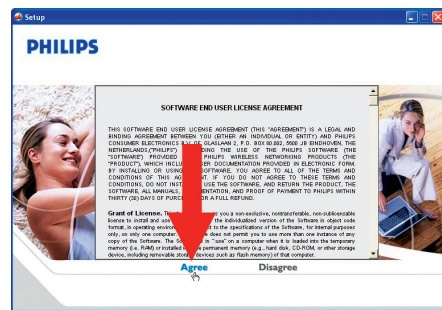
Connect each computer or other device in your network to the ADSL Wireless Base Station with an Ethernet cable or wirelessly.

2 Install



Insert Installation CD

Place the installation CD in the CD-Drive

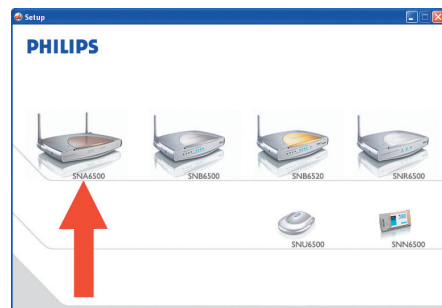


Agree License Agreement

Click **Agree**

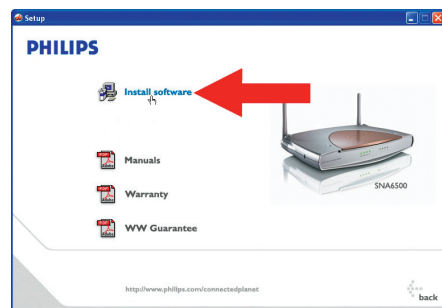
If this screen does not appear, start the CD manually

- Open My Computer
- Open CD-Drive
- Open Setup.exe



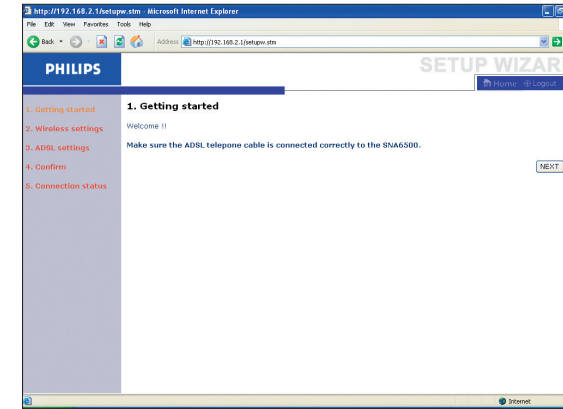
Select Wireless Base Station

Click on the SNA6500 image



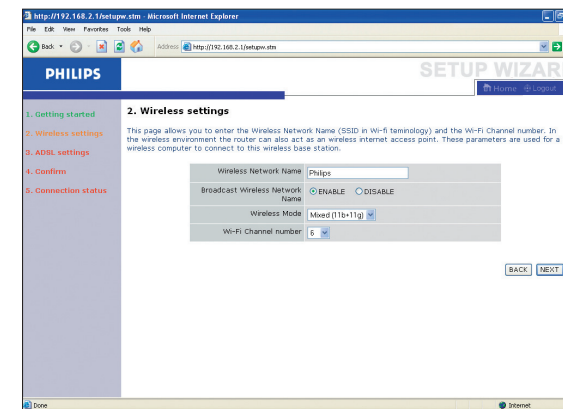
Start installation software

Click on **Install software**



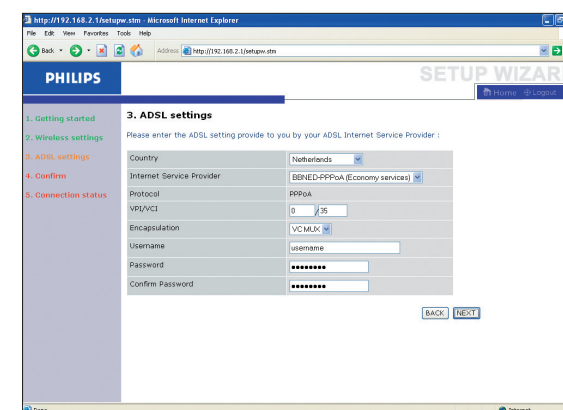
2. "Getting Started"

Follow the instructions on the screen and click the **NEXT** button.



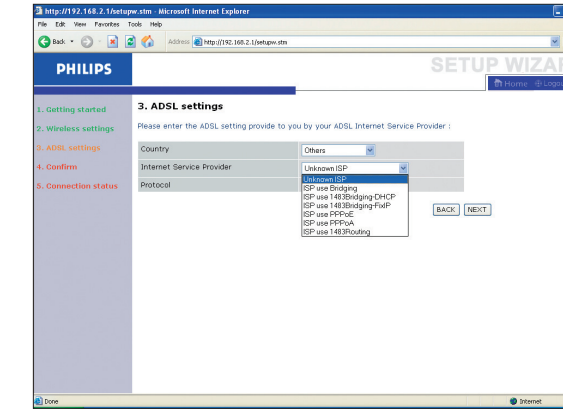
3. "Wireless settings"

For easy installation keep the default wireless settings. If you later would like to change any of the wireless settings you can do so via the menu in the ADSL Wireless Base Station.

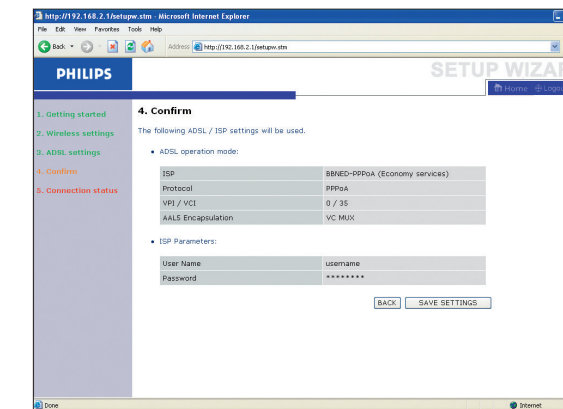


4. "ADSL settings"

In step 3 you have to enter the settings supplied to you by your ADSL Internet Service Provider (ISP). For easy installation you can select your ISP from a list of predefined ADSL ISP's per country.



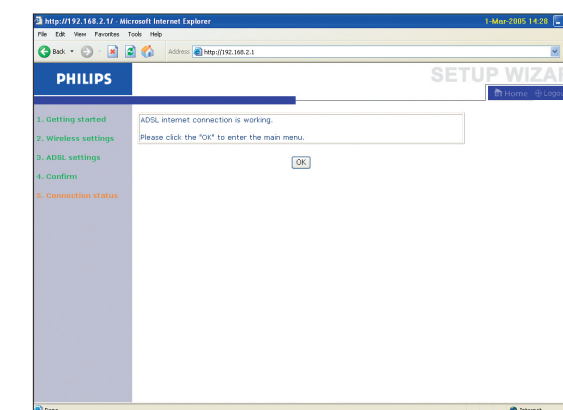
If you cannot find your ISP in the list you can enter the settings manually. To do so select as 'Country' 'others' and select from the 'Internet Service Provider' list the ADSL protocol your ISP is using (this should be mentioned in the documentation you received from your ISP).



5. "Confirm"

Make sure the information you entered is correct. If you want to make changes, click the 'Back' button to go back to Step 3.

After you've clicked "SAVE SETTINGS" a message will appear "Your data is being saved".



6. "Connection Status"

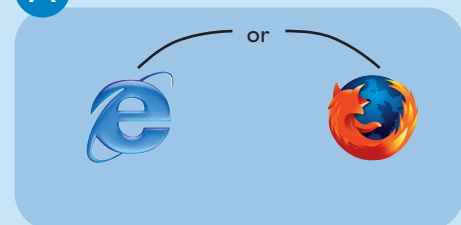
Step 5 shows if you have a working Internet connection or not. If you have connection you will see the following message

3 Enjoy

Share broadband Internet throughout the home

Follow these simple steps to connect to the Internet.

A Open Internet browser



B Open Internet address



1. Enter **Internet address**
For example: www.philips.com
2. Select **Go**

Wireless freedom

Enjoy the freedom of wireless networking. Your computer is now ready for use in multiple rooms of your home

For additional help read the manual on the CDROM.



Need Help?
User manual

See the user manual that came with your Wireless Base Station
Hulp on line: www.philips.com/support

On-line Help

België/Belgique/Belgien	070 253 010 (€ 0.17)
Cyprus	800 92256
Danmark	3525 8761
Deutschland	0180 5 007 532 (€ 0.12)
España	902 888 785 (€ 0.15)
France	08 9165 0006 (€ 0.23)
Ελλάδας	0 0800 3122 1223
Ireland	01 601 1161
Italia	199 404 042 (€ 0.25)
Luxemburg/Luxembourg	26 84 30 00
Nederland	0900 0400 063 (€ 0.20)
Norge	2270 8250
Österreich	01 546 575 603 (low rate)
Portugal	2 1359 1440
Schweiz/Suisse/Svizzera	02 2310 2116
Suomi	09 2290 1908
Sverige	08 632 0016
UK (United Kingdom)	0906 1010 017 (£ 0.15)

Specifications are subject to change without notice.
Trademarks are the property of Koninklijke Philips Electronics N.V. or their respective owners.
© 2005 Koninklijke Philips Electronics N.V. All rights reserved.

www.philips.com
QSG-SNA6500-ENG-V1.0

ADSL Wireless Base Station
English

SNA6500

Welcome Quick Start Guide

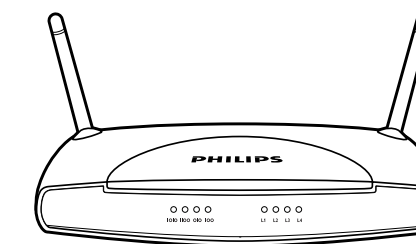
- 1 Connect
- 2 Install
- 3 Enjoy



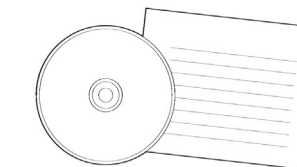
PHILIPS

What's in the box

You should have all of these:



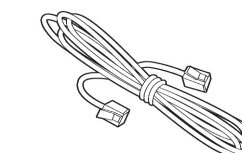
ADSL Wireless Base Station



Manual on CD



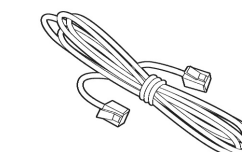
Power Supply



Black RJ-11
Telephone Cable



Quick Start Guide



Grey RJ-45
Ethernet Cable

If you don't have everything, contact your supplier immediately.