

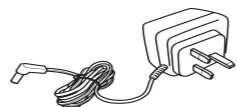
What's in the box



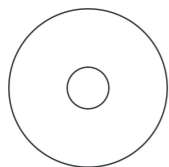
Wireless ADSL Modem Router



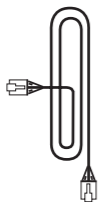
Quick start guide



Power adapter



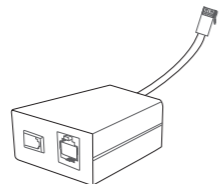
Installation CDROM



Ethernet cable



Line cord



Filter

What else will you need



A desktop or a laptop with free USB port



A web browser



An Internet connection

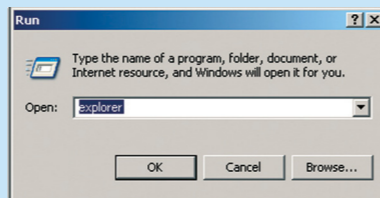
1 Install

A Insert installation CD



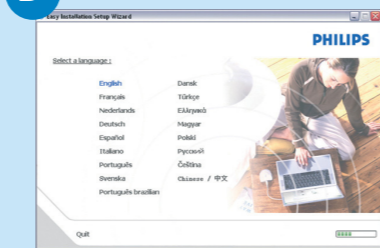
- Insert the installation CD into the PC's CD ROM (or DVDROM) drive
- > The installation program will start automatically
- Follow instructions on the screen

If for some reason the installation does not start automatically:



- Click on Windows **START** and then **RUN**
- Type **explorer** and navigate to the CD ROM (or DVDROM) drive
- Double-click on **Setup.exe**

B Choose your language



By default, the language of your operating system will be chosen, but you have 10 seconds if you want to select another one.

- Click on the required language
- > The next screen will be displayed automatically

C Select your product



- Click on the picture of the CGA7740N Wireless Modem Router
- > The next screen will be displayed automatically

2 Connect

Follow instructions on the screen

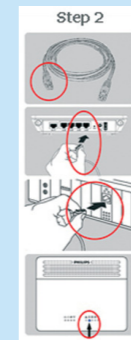
A Connect power adapter



- Connect the supplied power adapter to the 15V ===0.8A port and switch ON
- Connect the power plug to the electricity supply socket
- > Power light will turn on

Move your mouse over the red circles on your screen to enlarge pictures

B Connect the Ethernet cable

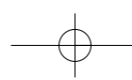


- Take the Ethernet cable provided in the box
- Connect this Ethernet cable to the LAN 1 port on the CGA7740N
- Connect the other end of the Ethernet cable to your computer
- > LAN 1 light will turn on

C Connect the line cord

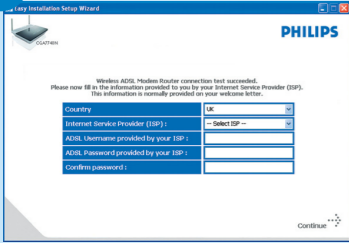


- Take the supplied line cord
- Connect the supplied line cord to the ADSL port
- Connect the other end of the supplied line cord to the ADSL filter then connect the ADSL filter to the telephone socket
- > light will turn on
- Then click on **Continue**
- > A progress bar screen will be displayed



3 Enjoy

D Enter Internet Service Provider settings



- Select your country and Internet Service Provider (ISP) using the information provided by your ISP


If your ISP is not in the default list, please select **“Other”**.

- Click on **Continue**

> A progress bar screen will be displayed, your settings will be saved and you will be connected to Internet

> The next screen will be displayed

E Connected to Internet

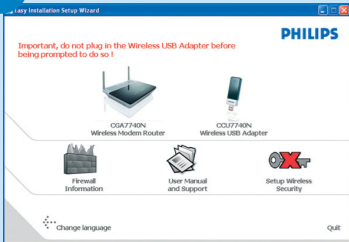


Once the installation completed, the following screen will be displayed.

- Click on **Menu** if you want to go back to the menu screen


Your WiFi network is running but not secured.

F Secure your network



- Click on **Set Encryption**

> Your WiFi network will be secured by generating automatically an Encryption key and a network name (SSID)

At any time you can retrieve your wireless security settings using your installation CDROM on the computer where you installed your gateway and by clicking on the security icon  of the menu page.

A Open Internet browser



B Open Internet address



- Enter Internet address
For example: www.philips.com
- Select **GO**

Wireless freedom
Enjoy the freedom of wireless networking. Your computer is now ready for full use anywhere in your home.

Important information
Microfilters must be plugged in between the wall socket and all devices connected to your telephone line, this includes extension telephones, your ADSL modem router and Sky box. Absence of a filter may result in a failure to connect to broadband, interference such as buzzing noises that affect normal telephone calls, or reduced broadband speed and performance.

Welcome to Philips!
Register your product and get support at www.philips.com/welcome



CGA7740N

Quick Start Guide

- 1 Install
- 2 Connect
- 3 Enjoy

