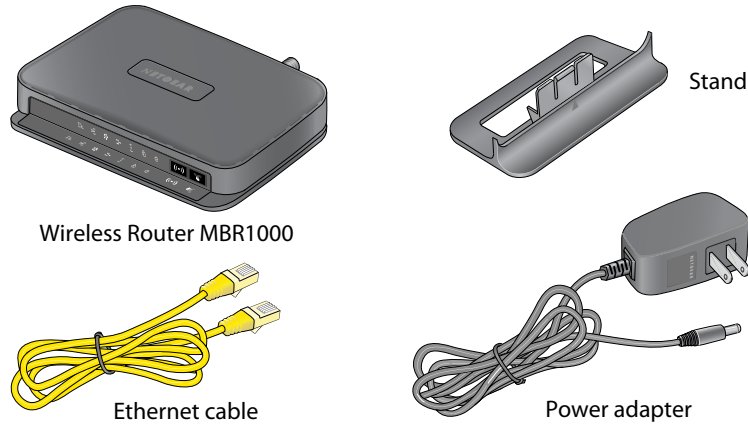


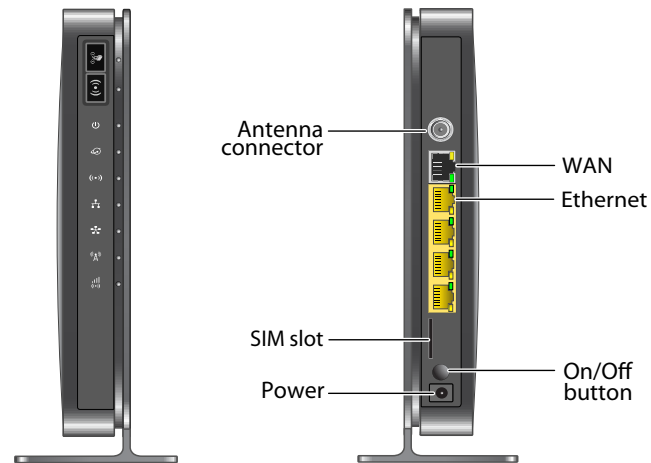
NETGEAR® Installation Guide

Mobile Broadband 11n Wireless Router MBR1000

Package Contents



Front and Rear Views

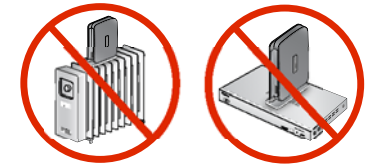
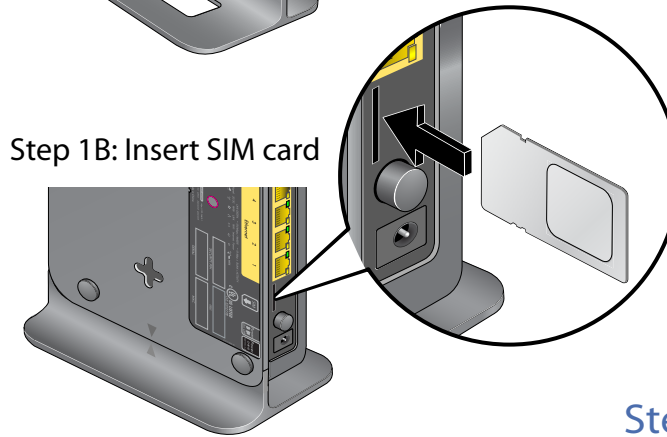


Step 1: Prepare the Router

Step 1A: Install router on stand



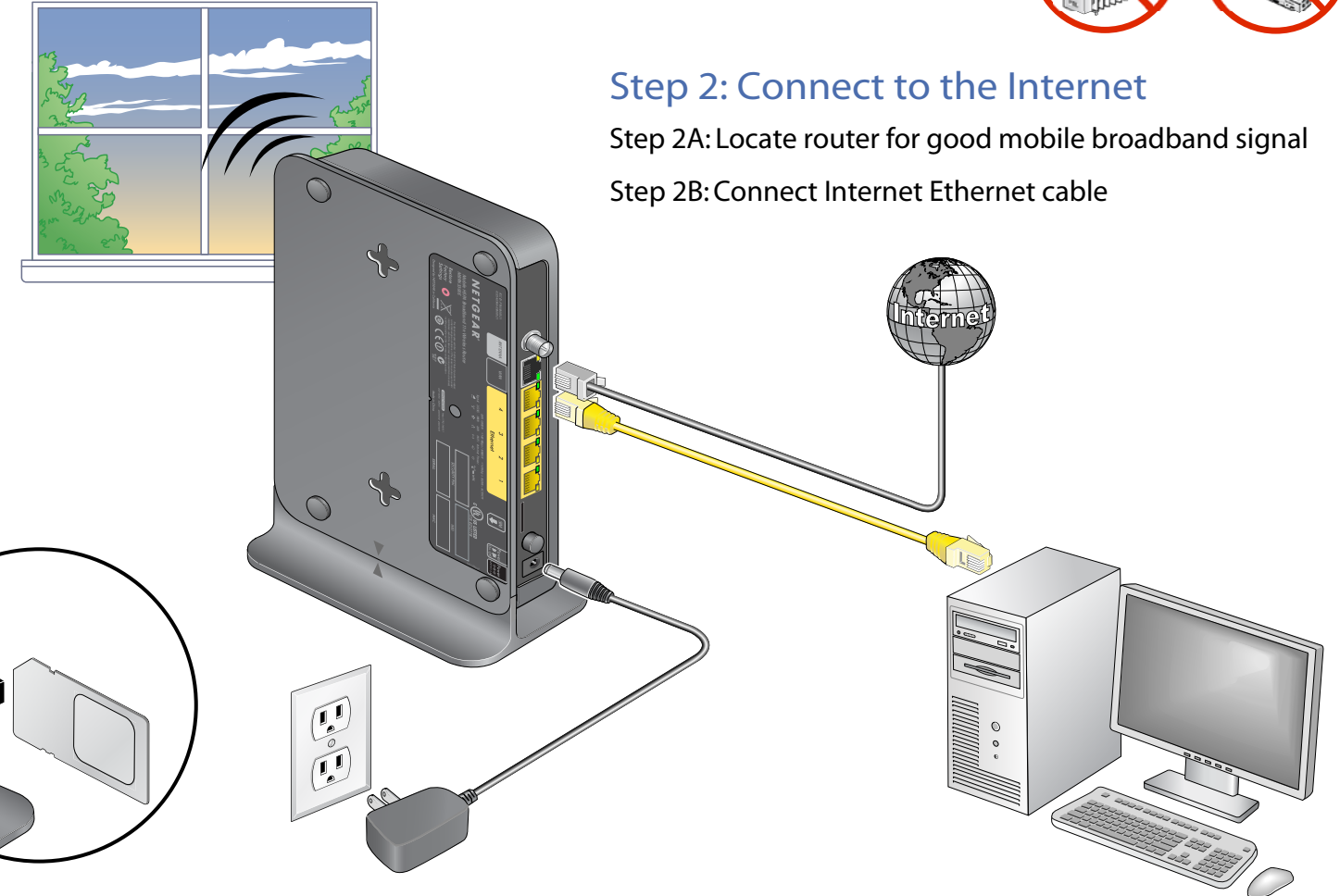
Step 1B: Insert SIM card



Step 2: Connect to the Internet

Step 2A: Locate router for good mobile broadband signal

Step 2B: Connect Internet Ethernet cable



Step 4: Connect the Power

Step 3: Connect to a Computer

Router Setup

1. In the address field of your Web browser, type **www.routerlogin.com**.

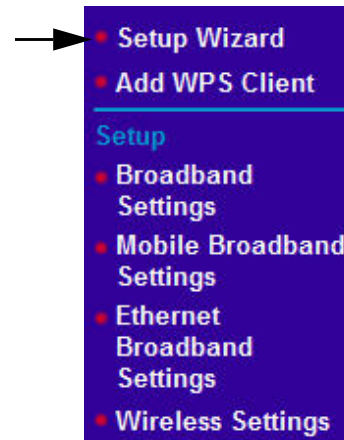
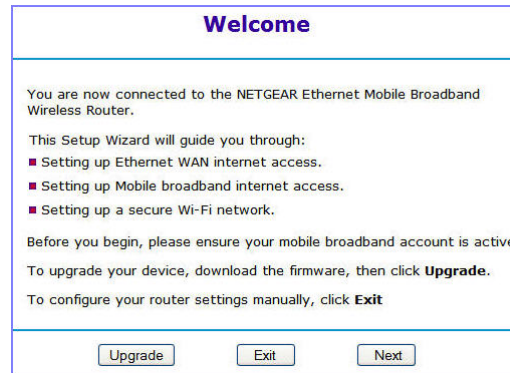
The first time you connect to your router, the Setup Wizard Welcome screen displays.

2. Follow the wizard steps to set up the Internet connection for your router.


Depending on your location, you might need to enter your Internet connection settings. If you do not have this information, contact your ISP.

3. You can set up your wireless (WiFi) network right away or wait until later.
4. The wizard displays a summary of your settings. Either click **Print** to print the settings or write them down and save them for future reference.
5. Click **Finish**. Your browser goes to the NETGEAR website.

Note: If you want to return to the SetupWizard after installation, log in to the router and select Setup Wizard from the router menu. For more information about setting up the router, scroll down and select Documentation to view the online User Manual.




FAQs

- For a strong Internet connection, where should I locate my mobile broadband router when I connect it to the router?
For Internet coverage, check with your ISP to find out what its service areas are. When positioning the mobile broadband router, place it near a window.
- How do I join the router's wireless (WiFi) network?
 - On your WiFi computer or device (iPhone, gaming device), open the software that manages your WiFi connection.
 - Look for your WiFi network—the one you named when you set up your router. Select it, and connect.
 - If you set up WiFi security, enter your Passphrase or network key.
 - For a WPS (WiFi Protected Setup) connection—NETGEAR calls this Push 'N' Connect—press the WPS button on the router. It looks like . Within 2 minutes, follow the software instructions on your WiFi device to complete the WPS process.

Troubleshooting

What should I do if the router does not connect to the Internet?

- Check with your ISP to ensure there is good coverage in the area.
- Ensure your mobile broadband account is active.
- Ensure the SIM card is inserted properly into the router.
- Locate the router near the window or other area of the building.
- Log in to the router menu and check your router's Internet configuration. Check that the user name, password, and APN with ISP are set correctly. If you use a PIN to connect to the Internet, make sure it is entered correctly.
- If there is coverage in your area, installing an external antenna may improve the signal quality. Refer to the User Manual on how to install the antenna.

The router Internet indicator  is on, but I cannot access the internet using WiFi.

- Check your WiFi connection.
- For help with troubleshooting WiFi connections, log in to the router menu using Ethernet and click the link to the online User Manual.

Technical Support

Thank you for selecting NETGEAR products.

After installing your router, locate the serial number on the label of your product and use it to register your product at <http://www.NETGEAR.com/register>. Registration is required before you can use our telephone support service. Registration via our website is strongly recommended. Go to <http://kbserver.netgear.com> for product updates and Web support. For Warranty and Regional Customer Support information, see the User Manual that came with your product.



June 2010