



N600 Dual Band WiFi Extender



WELCOME

Thank you for choosing a NetComm Wireless NP126 Dual Band WiFi Extender. This guide will help you set up, connect and configure your device quickly and easily.

PACKAGE CONTENTS

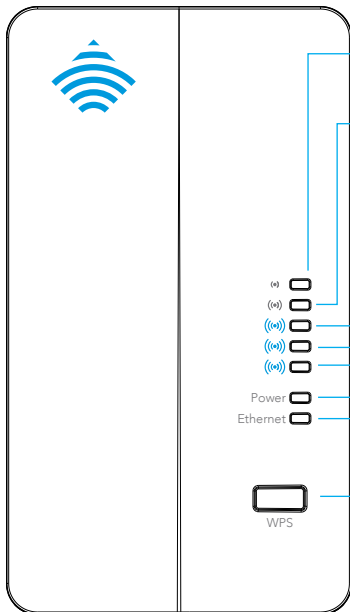
The NP126 package includes:

- 📶 1 x NetComm Wireless NP126 Dual Band WiFi Extender
- 📶 1 x Quick start guide
- 📶 1 x 1.5m RJ-45 Ethernet cable
- 📶 1 x WiFi security card
- 📶 1 x Warranty card

DEVICE OVERVIEW

Front panel

The NP126 features 7 LEDs on the front panel and a WPS button. The top 5 LEDs give an indication of the distance and strength of the signal between the NP126 and the connected router. The signal strength LEDs only functions when the device is in repeater mode. The images below describe the meaning of each indicator and button.



The NP126 is located too far from the router to provide a reliable signal.

The NP126 is located just out of the optimal range of the connected router.

Optimal signal and distance from the connected router to provide the widest coverage area for your network.

The NP126 has a good signal to the router but is too close to maximize the coverage area.

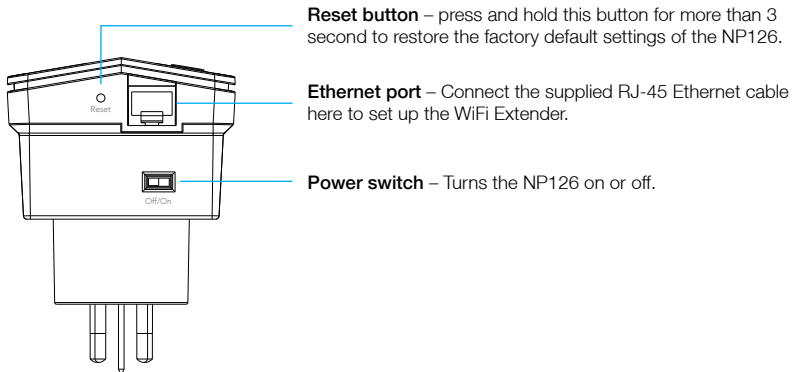
The NP126 has a strong signal to the router but is too close to maximize the coverage area.

When illuminated, indicates that the NP126 is correctly powered and is switched on.

When illuminated, indicates that the NP126 is connected to an active Ethernet connection.

WPS button/LED – Press and hold the WPS button for between 1 and 2 seconds then release to trigger the WPS connection when you are connecting a client device to the NP126. Press and hold the button for between 4 and 9 seconds then release to trigger the WPS connection when you are connecting the NP126 to a router. The WPS LED blinks when the WPS process is triggered.

Bottom panel



INSTALLING THE WIFI EXTENDER

1. Connect one end of the supplied RJ-45 Ethernet cable to the Ethernet port on the bottom panel of the NP126 and the other end to the Ethernet port of your computer.
2. Ensure the NP126 power switch is in the 'off' position and then plug the NP126 into a power outlet which is close to your computer and the router to which it will connect.
3. Turn the power switch of the NP126 into the 'on' position. The NP126 Dual Band WiFi Extender starts up and the Power LED illuminates.

LOGGING IN TO THE WEB INTERFACE

1. Open a web browser (such as Internet Explorer, Google Chrome or Firefox), type **http://192.168.40.1/** into the address bar and press **Enter**. The login page is displayed.

The screenshot shows the NetCommWireless login page. At the top, there is a black header with the NetCommWireless logo and name. Below the header, there is a light blue background with a 'Password:' label, a text input field, a checkbox labeled 'Remember my password', and a 'Login' button.

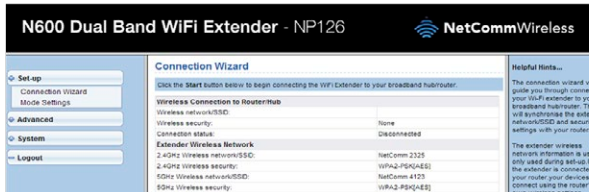
2. At the login screen, type **admin** into the Password field. If you would like to store the password in the browser, select the **Remember my password** option. Click the **Login** button. The Connection Wizard is displayed.

CONNECTING THE NP126 TO YOUR ROUTER

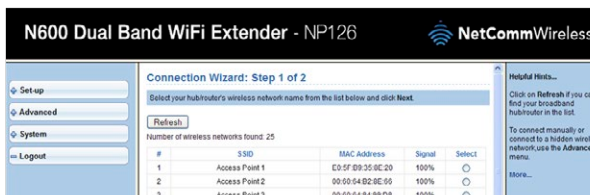
Using the web user interface

Upon logging in to the NP126 web interface, you are presented with the Connection Wizard.

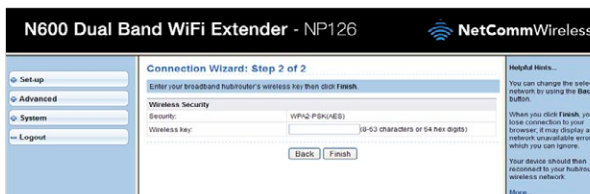
1. Click the **Start** button at the bottom of the screen to begin connecting the WiFi Extender to your broadband hub/router. The NP126 will scan for the available wireless networks in its range and present them in a list.



2. Select the network you wish to connect to by selecting the radio button in the **Select** column for the corresponding network and click the **Next** button. You will now be prompted for the Wireless Key (password).



3. Enter the wireless key and click the **Finish** button.



4. The NP126 will now connect to your router, when the connection is established the NP126 will display "Connection succeed".



The connection wizard is complete.

Using the WPS button to connect the NP126 to your router

If your router supports the WPS feature, you can quickly and securely connect the NP126 to your router using the WPS button located on the front panel of the unit.

To connect the NP126 to your router using WPS:

1. Connect your NP126 to a wall socket near your router. On your router, press the WPS button. (Refer to your router's user guide for more information)
2. On the NP126, press and hold the WPS button for more than 4 seconds. The WPS LED blinks to indicate that the WPS function has been triggered. When the connection has been established using WPS, the WPS LED stops flashing and one of the signal strength LEDs illuminates to indicate the strength of the active connection.

The WPS connection is complete.

CHOOSING A LOCATION FOR THE WIFI EXTENDER

Now that your WiFi Extender is connected to your router, you can move it to a different location to provide greater range for your network.

1. Slide the power switch to the 'off' position and remove the NP126 from the wall socket.
2. Plug the NP126 into a wall socket in the centre of the area that you would like to cover which is also within range of the router. Turn the power switch to the 'on' position. Wait approximately 30 seconds for the NP126 to power up and connect to the router.
3. Examine the signal strength LEDs on the front panel of the NP126. If one of the top two LEDs is illuminated, the NP126 is further than ideal from the router or may have other environmental factors causing the signal to be weak. In this case, try moving the NP126 to a wall socket closer to the router. If one of the bottom two LEDs are illuminated then you have a strong signal to the router but you may not have the greatest coverage possible. In this case you might like to plug the NP126 into a wall socket further away from the router to achieve greater coverage for your wireless network. When the middle signal strength LED is illuminated, you have the ideal location for performance and coverage of your wireless network. Try different locations in the premises until you find the one that provides you with the optimal coverage for the desired area.

CONNECTING YOUR WIRELESS DEVICE TO THE NP126

Using the included WiFi Security Card

1. Ensure WiFi is enabled on your wireless device that will connect to the router (e.g. computer/laptop/smartphone).
2. Scan for wireless networks in your area. If your device supports both 2.4GHz and 5GHz networks then you will see both networks appear on the scanned list. Connect to the network name that matches one of the Wireless network name found on the Wireless Security Card (included in the box).



Note: For security purposes, each NetComm Wireless NP126 has a unique SSID (such as NetComm 7559) and Wireless Security Key. The above image is for illustration only.



3. When prompted for your wireless security settings, enter the Wireless security key listed on your Wireless Security Card.
4. Wait approximately 30 seconds for the connection to establish.

Using the WPS button to connect your wireless device to the NP126

If your wireless device supports the WPS feature, you can quickly and securely connect it to your NP126 using the WPS button located on the front panel of the unit. WPS automatically establishes a secure connection between your devices by simply pushing the WPS button on both devices within a 2 minute time period.

To connect your wireless device to the NP126 using WPS:

1. Place your wireless client device near the NP126. On your wireless client device, press the WPS button. Refer to the documentation for your wireless client device if you can't find the WPS button.
2. On the NP126, press and hold the WPS button for 1 to 2 seconds. The WPS LED blinks to indicate that the WPS function has been triggered. When the connection has been established using WPS, the WPS LED stops flashing.

The WPS connection is complete.