

NF17ACV - QUICK START GUIDE

VDSL / ADSL Dual Band AC1600 WiFi Gigabit Modem Router with VoIP

WELCOME

This quick start guide is designed to get you up and running quickly with your new router. More advanced set up instructions can be found in the user manual which can be downloaded from **www.netcommwireless.com**

TABLE OF CONTENTS

PACKAGE CONTENTS	2
PRE-REQUISITES	4
SETTING UP YOUR ROUTER	
ADSL Connections	4
VDSL Connections	6
Ethernet Connections	8
LOGGING INTO THE WEB INTERFACE	10
CONFIGURING THE DEVICE FOR USE WITH AN INTERNET SERVICE	11
ADSL	12
VDSL	14
Ethernet WAN	16
CONNECTING WIRELESS DEVICES	19
CHANGING THE WIRELESS PASSWORD	20
CHANGING THE ADMINISTRATOR PASSWORD	22

PACKAGE CONTENTS

1. VDSL / ADSL Dual Band AC1600 WiFi Gigabit Modem Router with VoIP (NF17ACV)
2. RJ45 Ethernet cable
3. RJ11 Telephone cable
4. Power supply (12V/3A)
5. WiFi Security card
6. Warranty card
7. Quick Start Guide



1



2



3



4



5



6



7

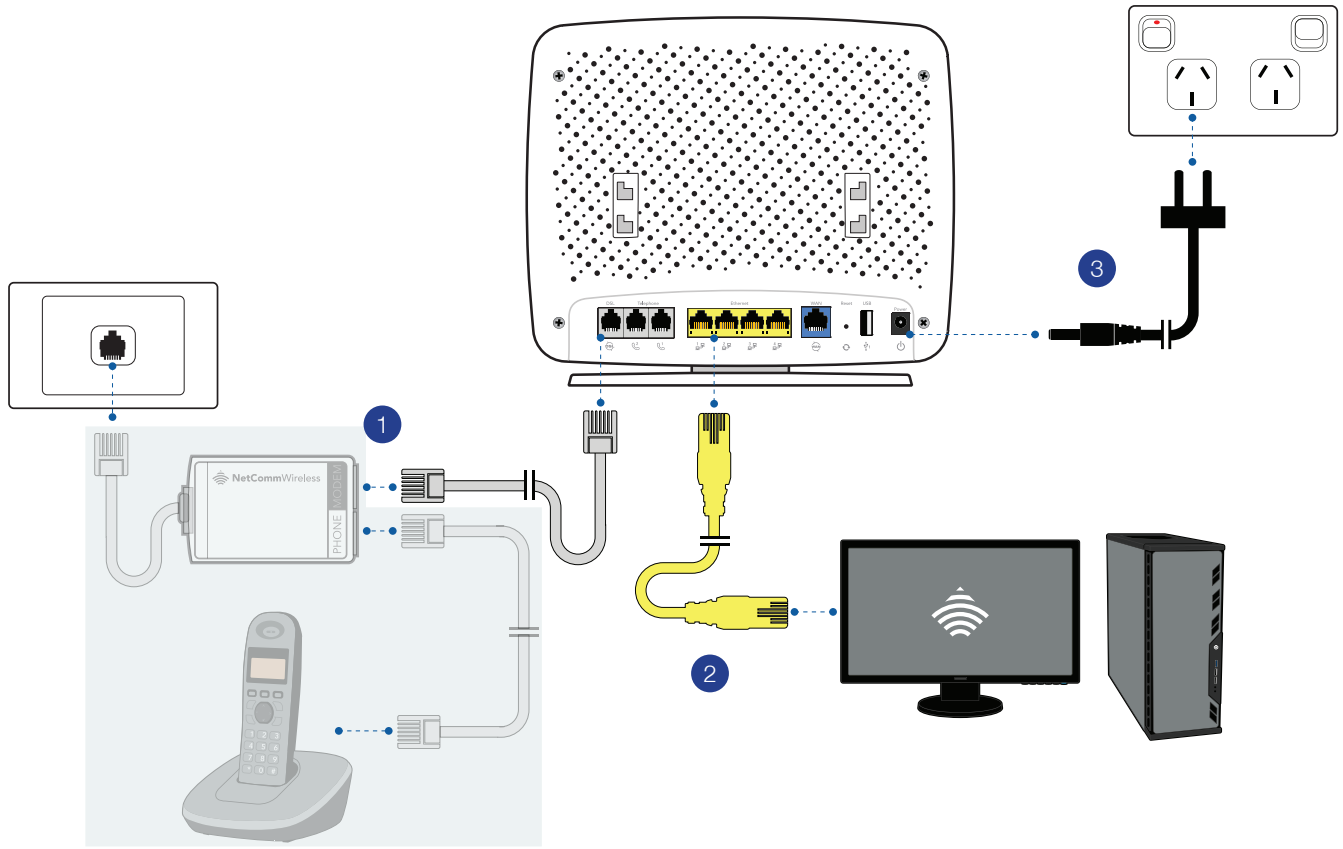
PRE-REQUISITES

If you are using a voice service on the same line as the DSL service, you will need a DSL line filter for each handset or back-to-base home alarm system on the line.

SETTING UP YOUR ROUTER

ADSL Connections

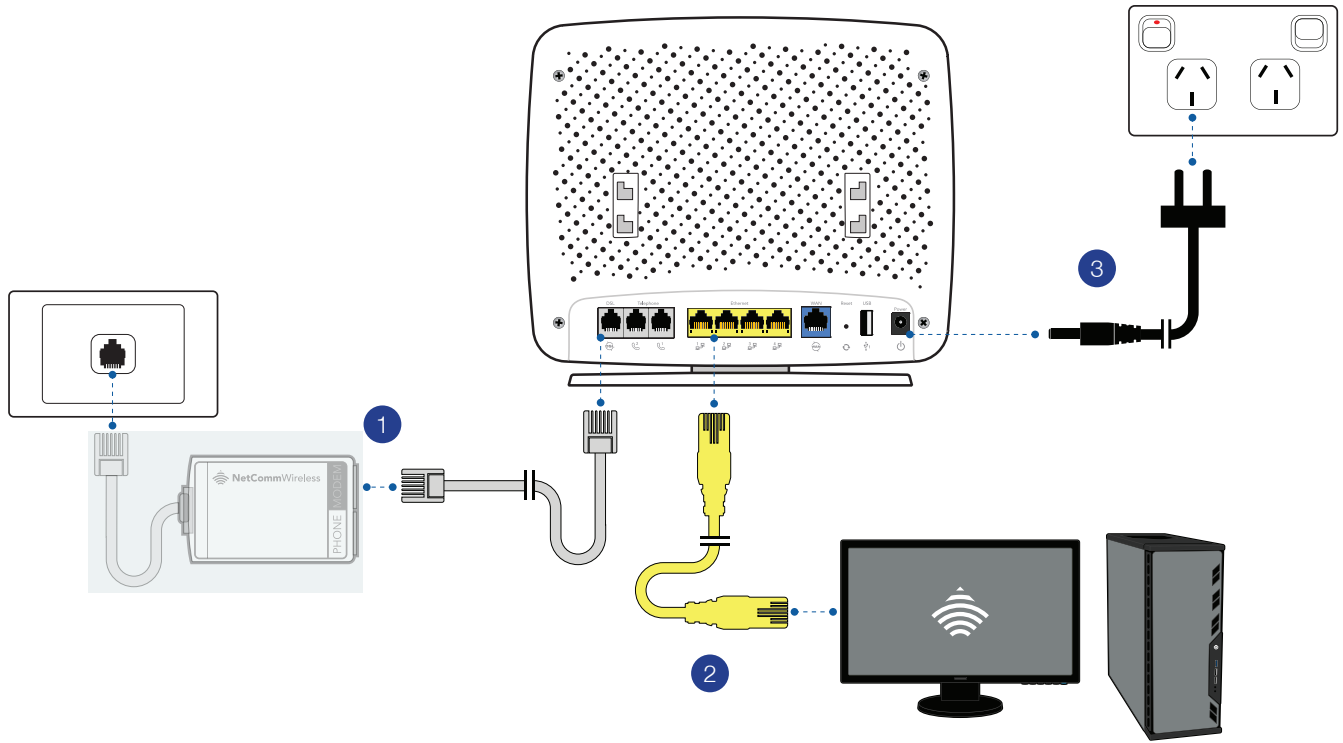
1. Connect the supplied RJ11 cable to the “modem” port of your DSL line filter and then connect the other end to the **DSL** port on the back of the NF17ACV. Connect the DSL line filter (not included) to the wall socket and then connect your handset to the “phone” port of the filter.
2. Connect the supplied RJ45 Ethernet cable from one of the yellow **Ethernet** ports (1-4) on the back of the NF17ACV to your computer.
3. Connect the included power adapter to the **Power** jack of the NF17ACV and then plug it into an available wall socket. Press the **ON/OFF** button to power the router on. The Power light illuminates in red. When the NF17ACV has finished booting up, the Power light turns green.



SETTING UP YOUR ROUTER

VDSL Connections

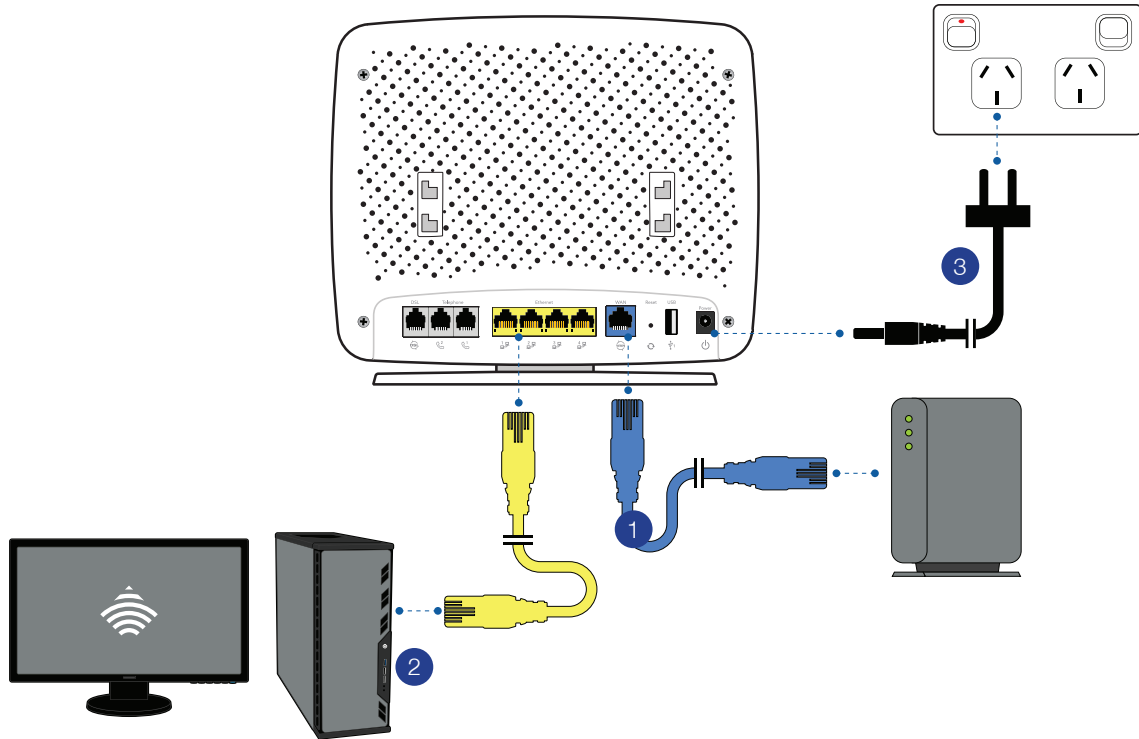
1. Connect the supplied RJ11 cable to the “modem” port of your DSL line filter and then connect the other end to the **DSL** port on the back of the NF17ACV. Connect the DSL line filter (not included) to the wall socket.
2. Connect the supplied RJ45 Ethernet cable from one of the yellow **Ethernet** ports (1-4) on the back of the NF17ACV to your computer.
3. Connect the included power adapter to the **Power** jack of the NF17ACV and then plug it into an available wall socket. Press the **ON/OFF** button to power the router on. The Power light illuminates in red. When the NF17ACV has finished booting up, the Power light turns green.



SETTING UP YOUR ROUTER

Ethernet Connections

1. Connect a straight-through Ethernet cable to the blue **WAN** port on the back of the NF17ACV and then connect the other end to your upstream gateway device, e.g. an FTTP gateway or HFC cable modem.
2. Connect the supplied RJ45 Ethernet cable from one of the yellow **Ethernet** ports (1-4) on the back of the NF17ACV to your computer.
3. Connect the included power adapter to the **Power** jack of the NF17ACV and then plug it into an available wall socket. Press the **ON/OFF** button to power the router on. The Power light illuminates in red. When the NF17ACV has finished booting up, the Power light turns green.



LOGGING INTO THE WEB INTERFACE

1. Open a web browser (such as Internet Explorer® / Microsoft Edge®, Mozilla Firefox® or Google Chrome™), type **http://192.168.20.1** into the address bar and press **Enter**.
2. At the login screen, type **admin** into both the Username and the Password fields and click **OK**.

CONFIGURING THE DEVICE FOR USE WITH AN INTERNET SERVICE

1. Click on the **Basic Setup** menu item on the left side of the screen.
2. Follow the instructions for your connection type.



ADSL

1. Select **ADSL** and click the **Next** button.

Basic > Quick Setup > Internet Setup (Select one DSL mode)

This Wizard is designed to walk you through the basic information needed to set up your device
To continue, please select your WAN connection type.

ADSL
 VDSL
 Ethernet WAN

Next

2. Select either the PPPoE, PPPoA or Bridging for your internet connection as specified by your Internet Service Provider (ISP). Click the **Next** button.

Basic > Quick Setup > Wan Setup (Select one WAN mode)

Select the WAN mode for your internet connection as specified by your Internet Service Provider(ISP).

PPP Over Ethernet (PPPoE)
 PPP Over ATM (PPPoA)
 Bridging

Back Next

3. In the **User ID** and **Password** fields, enter the Username and Password assigned to you by your Internet Service Provider (ISP). Click the **Finish** button.

The account settings are saved and the NF17ACV connects to the internet.

Basic > Quick Setup > ADSL only > PPPoE Information

Enter the User ID and Password assigned to you by your Internet Service Provider (ISP).

Protocol: PPPoE

User ID:

Password:

VPI:

VCI:

VDSL

1. Select **VDSL** and click the **Next** button.

Basic > Quick Setup > Internet Setup

This Wizard is designed to walk you through the basic information needed to set up your device

To continue, please select your WAN connection type.

ADSL

VDSL

Ethernet WAN

Next

2. Select the WAN mode for your internet connection as specified by your Internet Service Provider (ISP). Click the **Next** button.

Basic > Quick Setup > WAN Setup (Select one WAN mode)

Select the WAN mode for your internet connection as specified by your Internet Service Provider(ISP).

PPP Over Ethernet (PPPoE)

IP over Ethernet (IPoE)

Bridging

Back Next

3. Select the correct VLAN option for your connection.
For **New Zealand** customers, the requirement for VDSL is **VLAN tag 10**. If you are not sure of the tagging requirement for your connection, please contact your ISP.

Basic > Quick Setup > VLAN Setup

Please select the correct VLAN option for your connection:
If you are unsure, please contact your ISP

No VLAN Tag

VLAN Tag 10(For most New Zealand Customers)

Custom VLAN Tag

Back Next

4. In the **User ID** and **Password** fields, enter the Username and Password assigned to you by your Internet Service Provider (ISP).
5. Click the **Finish** button when you have entered the required details.

Basic > Quick Setup > VDSL only > PPPoE Information

Enter the User ID and Password assigned to you by your Internet Service Provider (ISP).

User ID:

Password:

Back Finish

Ethernet WAN

1. Select **Ethernet WAN** then click the **Next** button.

Basic > Quick Setup > Internet Setup (Select one DSL mode)

This Wizard is designed to walk you through the basic information needed to set up your device

To continue, please select your WAN connection type.

ADSL

VDSL

Ethernet WAN

Basic > Quick Setup > WAN Setup (Select one WAN mode)

Select the WAN mode for your internet connection as specified by your Internet Service Provider(ISP).

PPP Over Ethernet (PPPoE)

IP over Ethernet (IPoE)

2. Select the WAN mode for your internet connection as specified by your Internet Service Provider (ISP). Click the **Next** button.

3. **PPP over Ethernet (PPPoE):** Select the correct VLAN option for your connection. For **New Zealand** customers, the requirement for VDSL is **VLAN tag 10**. If you are not sure of the tagging requirement for your connection, please contact your ISP.
4. In the **User ID** and **Password** fields, enter the username and password assigned to you by your Internet Service Provider (ISP). Click the **Finish** button when you have entered the required details.
5. **IP over Ethernet (IPoE):** Select the correct VLAN option for your connection. For **New Zealand** customers, the requirement for VDSL is **VLAN tag 10**. If you are not sure of the tagging requirement for your connection, please contact your ISP.

Basic > Quick Setup > VLAN Setup

Please select the correct VLAN option for your connection:
If you are unsure, please contact your ISP

No VLAN Tag

VLAN Tag 10(For most New Zealand Customers)

Custom VLAN Tag

Back Next

Basic > Quick Setup > Ethernet WAN only > PPPoE Information

Enter the User ID and Password assigned to you by your Internet Service Provider (ISP).

User ID:

Password:

Back Finish

Basic > Quick Setup > VLAN Setup

Please select the correct VLAN option for your connection:
If you are unsure, please contact your ISP

No VLAN Tag

VLAN Tag 10(For most New Zealand Customers)

Custom VLAN Tag

Back Next

Basic > Quick Setup > Ethernet WAN only > IPoE Information

You can configure your IP over Ethernet(IPoE) settings as supplied by your Internet Service Provider(ISP), if your ISP supplied a static IP address, you can enter the details here. Otherwise,select"Obtain an IP address automatically".

Obtain an IP address automatically
 Use the following Static IP address

Back Next

6. If your ISP has supplied a static IP address, select **Use the following Static IP address** and enter the details, otherwise select **Obtain an IP address automatically**. Click the **Next** button.

WAN Basic Setup - Summary

Make sure that the settings below match the settings provided by your ISP.

Connection Type:	IPoE
NAT:	Enabled
Full Cone NAT:	Disabled
Firewall:	Enabled
IGMP Multicast:	Disabled
Quality Of Service:	Enabled

Click "Apply/Save" to have this interface to be effective. Click "Back" to make any modifications.

Back Apply/Save

7. The settings are displayed in a summary. Click **Apply/Save** to save them.

CONNECTING WIRELESS DEVICES


The default settings of the router have the wireless function enabled so there is no configuration necessary to use the wireless function, simply connect to the SSID (network name) listed on the WiFi security card or on the label located under your router. When prompted, enter the password that is also printed on the card or router label.





VDSL / ADSL Dual Band AC1600 WiFi
Gigabit Modem Router with VoIP - **NF17ACV**


MAC ID:
[REDACTED]

Serial No:
[REDACTED]

Model No. NF17ACV **Manufacturer:** NetComm
Power: 12V  3Amp Wireless Limited, Level 5 18-20
MADE IN CHINA Orion Road, Lane Cove NSW
2066 Australia

 **Admin IP Address:** 192.168.20.1
Default username/password: admin/admin

 **2.4GHz WiFi Network Name:**
2.4GHz WiFi Password:

 **5GHz WiFi Network Name:**
5GHz WiFi Password:

CHANGING THE WIRELESS PASSWORD

If you would like to change the wireless password to something easier to remember, follow these steps.

1. Select the **Wireless** menu from the left side of the screen, then select the **Security** option below it. The Wireless Security page is displayed.

- In the **WPA/WAPI passphrase** field, enter the desired password to use for the wireless network. When choosing a password, try to ensure that it
 - is unique;
 - is sufficiently long (at least 8 characters in length);
 - uses a mix of letters, numbers and symbols;
 - does not contain any personal information or common words.
- Click the **Apply/Save** button.

Manual Setup AP

You can set the network authentication method, selecting data encryption, specify whether a network key is required to authenticate to this wireless network and specify the encryption strength. Click 'Apply/Save' when done.

Select SSID:

Network Authentication:

Protected Management Frames:

WPA/WAPI passphrase: [Click here to display](#)

WPA Group Rekey Interval:

WPA/WAPI Encryption:

WEP Encryption:

CHANGING THE ADMINISTRATOR PASSWORD

We strongly recommend that you change the administrator password used to access the web interface to a more secure password. To change the administrator password:

1. From the menu on the left side of the screen, select **Management-> Access Control**.
2. In the **Old Password** field, enter the current administrator password (admin is the default password).

3. In the **New Password** and **Confirm Password** fields, enter a new password. When choosing a password, try to ensure that it:

- is unique;
- is sufficiently long (at least 8 characters in length);
- uses a mix of letters, numbers and symbols;
- does not contain any personal information or common words.

4. Click the **Apply/Save** button.

Access Control -- Passwords

Use the fields below to enter up to 15 characters and click 'Apply/Save' to change or create passwords. Note: Password cannot contain a space.

Username:

New Username:

Old Password:

New Password:

Confirm Password:

THIS PAGE INTENTIONALLY LEFT BLANK

THIS PAGE INTENTIONALLY LEFT BLANK



[SUPPORT.NETCOMMWIRELESS.COM](https://support.netcommwireless.com)

Trademarks and registered trademarks are the property of NetComm Wireless Limited or their respective owners. Specifications are subject to change without notice. Images shown may vary slightly from the actual product.