

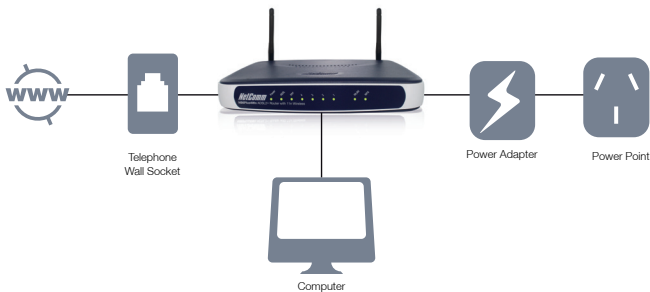
# NETCOMM GATEWAY™ SERIES ADSL2+ Modem Routers

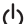
*NetComm*



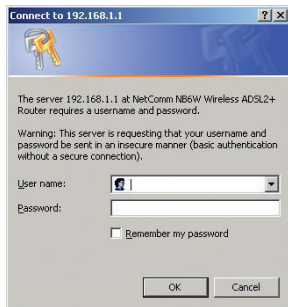
# 1

## Connecting your device



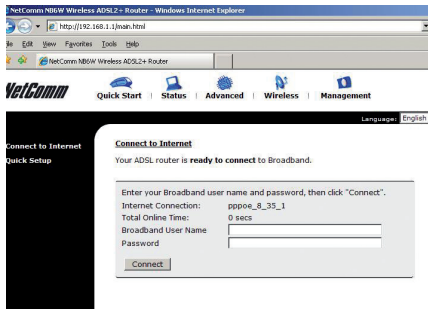
- Connect the supplied **RJ-11 cable** to the Line port on the back of the router to the phone port that supplies your ADSL
- Connect the supplied **RJ-45 Ethernet cable** from one of the LAN ports on the back of your router to your computer
- Connect the supplied **power adapter** to your router and press the  button to power the router

# 2 Login to the web interface



- Open a web browser (Internet Explorer, Firefox, Safari) and type **192.168.1.1** into the address bar
- At the login screen type **admin** into both the **username** and **password** fields. Then click **ok**. This will take you into your web configuration page.

# 3 Quick setup



- After logging into the web interface you will be taken directly to the Quick Start page.
- Enter your Internet account **username** and **password** in the exact format as specified by your ISP.
- Make sure the page displays **ready to connect** and then click **Connect**.
- Once connected, the screen changes to display the online time. The PPP light on the front panel of your device will come on, indicating you are connected to the Internet.

# 4

## Congratulations



### **Your setup is complete**

You can now access the Internet and share the connection. For more details on any advanced features, please consult the User Guide on the supplied CD.

# 5

## Establishing a wireless connection



NOTE: Wireless is only available on the NB6W, NB6Plus4W and NB6Plus4Wn

You can connect multiple wireless devices, including laptops, desktops and PDAs to your device by following two basic steps

- Using your wireless device (laptop, PDA etc) scan the wireless networks in your area and select the network named **Wireless**
- Enter the wireless password which by default is **a1b2c3d4e5**

NOTE: We recommend that you change both your wireless network name and password to ensure your network is more secure from uninvited outside sources. You can change these details in the web user interface. For more details, please consult your user guide.

# 6 Troubleshooting



## **Cannot establish a wireless connection**

- Make sure the wireless is enabled on your laptop, PDA, desktop etc. This could be as simple as turning on the wireless switch on your laptop
- Ensure your router and the device you are trying to connect are using the same wireless security settings

## **Cannot connect to the Internet**

- Make sure you have entered all of the correct details as supplied by your ISP in the Quick Start section when connecting to the Internet
- Double check all connections have been made into the correct ports. To check the status of your connection, login to the web user interface as previously described.

# 7 EM1550 ADSL2+ Splitter-Filter

Accessory for your product



Most broadband subscribers commonly share their ADSL broadband service and phone equipment over one telephone line. The higher frequencies used with ADSL can interfere with the operation of your telephones, fax and answering machines.

A NetComm ADSL Splitter-Filter splits your telephone line into two connection points – one for your ADSL modem and the other for telephone equipment. The embedded microfilter ensures that ADSL frequencies do not interfere with the normal operation of your telephone devices