

## Start Here ▼ ▼

### Preinstallation: Check Package Contents & Requirements

#### Package Contents

- 1 x Wireless-300N Range Extender Pro
- 1 x Power Adapter (12V1A)
- 1 x Ethernet Cable
- 2 x 3dBi Antenna
- 1 x CD-ROM  
(Includes User's Manual, Product Registration, and optional setup instructions, etc).

#### Minimum Requirements

- A Wired or Wireless Internet Connection
- A Wired or Wireless Network Device  
(Tablet, Smartphone, Mac or Windows computer, )
- A Power Outlet

## 1 A Hardware Setup

### a. Attach the Antennas to the Extender.

Locate the antennas provided with the package and attach them to the antenna jacks on the HWREN2.

### b. Plug in the Power Adapter.

When you have completed the antenna setup, plug the included power adapter into the nearest power outlet.



## B Find an Optimal Location

Your Hi-Gain™ Wireless-300N Range Extender Pro should be placed in optimal location within the range of your wireless network.



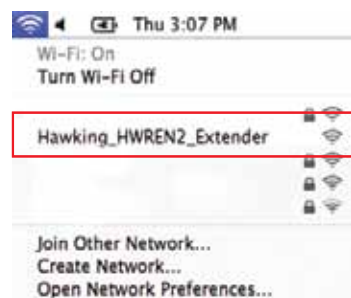
Make sure the Extender is placed in a location where it can receive a strong signal from your desired wireless Internet connection. The Extender will not work without a signal it can repeat.

## 2 Accessing the HWREN2 Range Extender Pro for Initial Configuration

### A. Using a Wireless Connection (with a Mac or Windows Computer, iPad® or iPhone®)

#### Mac Laptop/Desktop

Click on the Wi-Fi icon in the “Apple” toolbar. Click on the “Hawking\_HWREN2\_Extender” network from the drop-down menu. Then Continue to Step 3A.



#### Windows Computer

When the “Wireless Network” Icon pops up on the lower right of the Windows taskbar, Click on the Icon and Select “Hawking\_HWREN2\_Extender” Network. Then Continue on to Step 3A.



#### Using an iPad® or iPhone®

First, make sure JavaScript is On: Go to Settings icon

Select (a)Safari > make sure (b)JavaScript is ON.



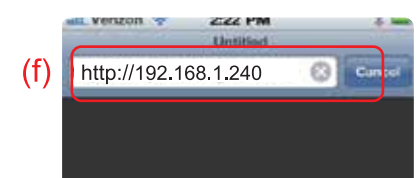
Go back to Home Screen > Select Settings > In Wi-Fi Networks, select (c) “Hawking\_HWREN2\_Extender” > (d) Make sure your Wi-Fi is connected to Hawking\_HWREN2\_Extender.



Go back to Home Screen > open your (e) Safari Browser

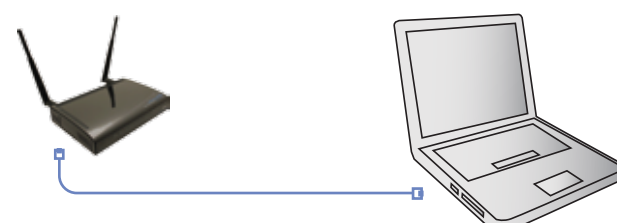


(f)Then, type in <http://192.168.1.240> Continue on to Step 3B.



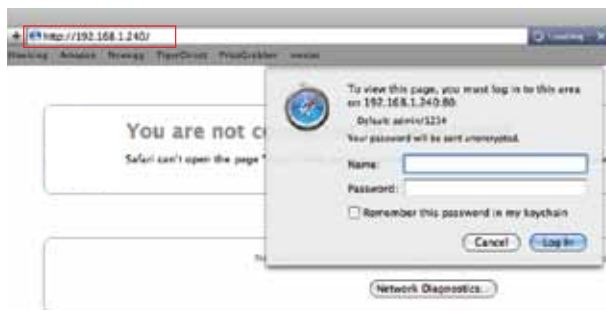
### B. Using a Wired Connection

For Wired Connections, use the included ethernet cable to connect to one of the five ‘wired’ ports on the back of the Range Extender. Then continue to Step 3A.



### 3 Configuring the Range Extender Pro

- A.** Using the connected device, open a web browser and type in the following web address in the web address bar: <http://192.168.1.240>



Once the page loads, enter the following login information:

Login: **admin** Password: **1234**  
Click **Login** to continue.

If this page does not load or you need to get back into the unit, you can reset the device by holding the reset button for 15 seconds, power off/on. If running Windows, you may also run the setup software on the CD.

- B.** Click Scan to find your wireless Internet connection. After the list appears, select the connection and click **Connect**.



If the signal strength is low or your network does not appear, you may need to adjust the location of your HWREN2. Click Scan to try again.

- C.** The Quick Setup will now prompt you to enter a security key only if the network you are connecting to is encrypted. Enter the key and click **Continue**.

Note: If there is no security on the original network, this step will automatically be skipped.



If you do not know the security key of the network you are connecting to, please consult your network administrator.

### 4 Finishing Up

The setup of your HWREN2 is now complete. A summary page will appear with all your settings. If anything is incorrect, click back to re-enter your settings. Click Finish to complete your setup. The HWREN2 will automatically reboot and start repeating and extending your wireless range.

#### Welcome to the Setup Wizard

Congratulations, you have completed the setup of your Hi-Gain™ Wireless 300N Range Extender with Range Amplifier.

#### Wireless Configuration

Range Extender ID: YourNetwork  
Source Access Point ID: YourNetwork  
Wireless Channel: 3  
Encryption Security: WPA-shared key

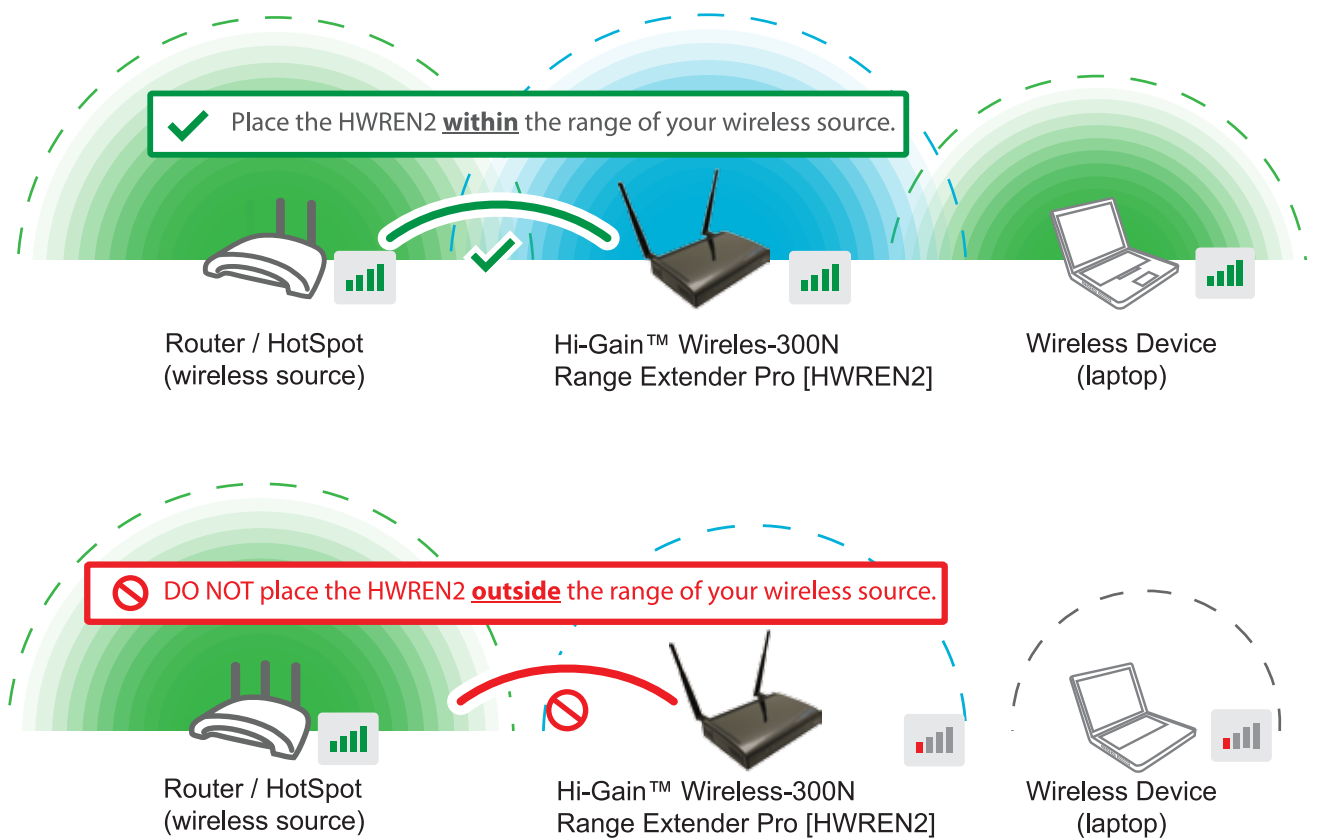
Click Back if you wish to change any of the setting above.

**NOTE:** After the reboot, the HWREN2 will join the original network and will NO LONGER be listed as "Hawking\_HWREN2\_Extender". It will automatically be renamed to your original network unless it was specified during the set up process.

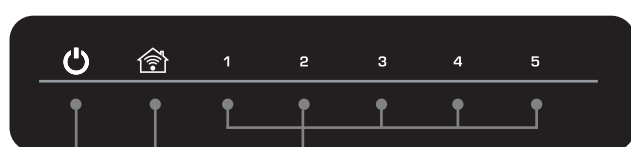
If you wish to modify this name, please refer to the user's manual.

### 5 Placing your Range Extender in an Optimal Location

It is important that you place the HWREN2 where it still can receive signal from the original wireless source. In most cases, place it between the original wireless source and your desired location.



### LED Description



**WIRED CONNECTION**  
LED is on when connected (an ethernet cable is plugged into the ethernet port). Blinking when wired data is transmitting/receiving.

**WIRELESS CONNECTION**  
LED is on when wireless is activated. Blinking when wireless data is transmitting/receiving.

**POWER**  
LED is on when the power adapter is connected and plugged into an outlet

### Back Panel Description



**ANTENNAS**  
Two RP-SMA Connectors +  
Two 3dBi Omni-Directional Antennas (upgradable)

**POWER PLUG (12V1A)**

**LAN PORTS**  
Connects your wired network devices and computers to your network

**RESET SWITCH/ WPS (WIFI PROTECTED SETUP) BUTTON**  
Resets your router to its default settings / initiates WPS Setup

**WIRELESS RADIO (ON/OFF SWITCH)**  
Turns off the wireless functions