

Requirements

- Wired or Wireless Internet Connection
- A Wired or Wireless Network Device (Tablet, Smartphone, Mac or Windows Computer)
- Power Outlet

Package Contents

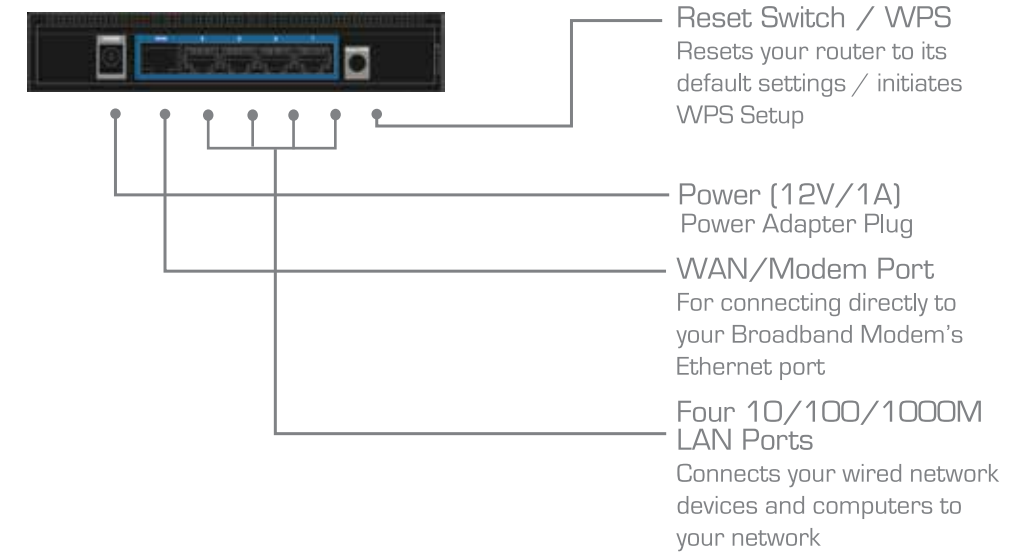
- 1x Wireless-1200AC Multifunction AP|Bridge|Repeater
- 1x Power Adapter 12V/1A
- 1x RJ-45 Ethernet Cord
- 1x Setup CD-ROM
- 1x Quick Installation Guide (QIG)

Product Description

LED Description

- Power** — LED is on, when the power adapter is connected and plugged into an outlet.
- Wireless Connection** — LED is on, (blinking) when wireless data activity is detected.
- Wired Connection** — LED is on, when an ethernet cable is plugged into the ethernet port.
- WAN (Internet) Connection** — LED is on, when there is an established connection with a cable/DSL modem.

Back Panel Description



Start Here

1 Hardware Setup

Connect the power adapter to the HW9ACM port labeled "power" and then plug the power adapter into an available wall socket. Next you will need to locate a wired or wireless device to configure the HW9ACM.

2 Configuring the HW9ACM

NOTE: If you are planning to configure the HW9ACM with a wired connection, please plug the HW9ACM directly into your computer's ethernet port, then go to Step 3.

For Mac Users

Click on the Wi-Fi icon in the "Apple" toolbar. Click on the "Hawking_HW9ACM" network from the drop-down menu. Then Continue to Step 3.



For Windows Users

On the lower right corner, go to your wireless network select. Click on "Hawking_HW9ACM". Then Continue on to Step 3.



Using an iPad® or an iPhone®

On your iOS device, locate the "Settings" Button



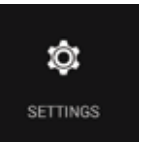
Turn on the Wi-Fi and click on it to select Wireless Networks.



Look for "Hawking_HW9ACM" Select it to connect.

Using an Android® device

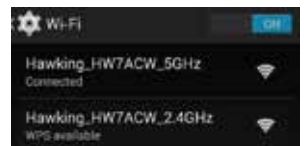
On your android device, locate the "Settings" Button.



Turn on the Wi-Fi and click on it to select Wireless Networks.



Look for "Hawking_HW9ACM" Select it to connect.



3 Login into the HW9ACM

Using the same device, open a web browser and type in the following web address in the web address bar: <http://192.168.1.230>

Once the page loads, enter the following login information:

Login: **admin**
Password: **1234**
Click **Login** to continue



If the page doesn't load, please check if JavaScript is enabled. Generally, this should be enabled by default. However, if it's not, please go into your Browser Settings and enable JavaScript.

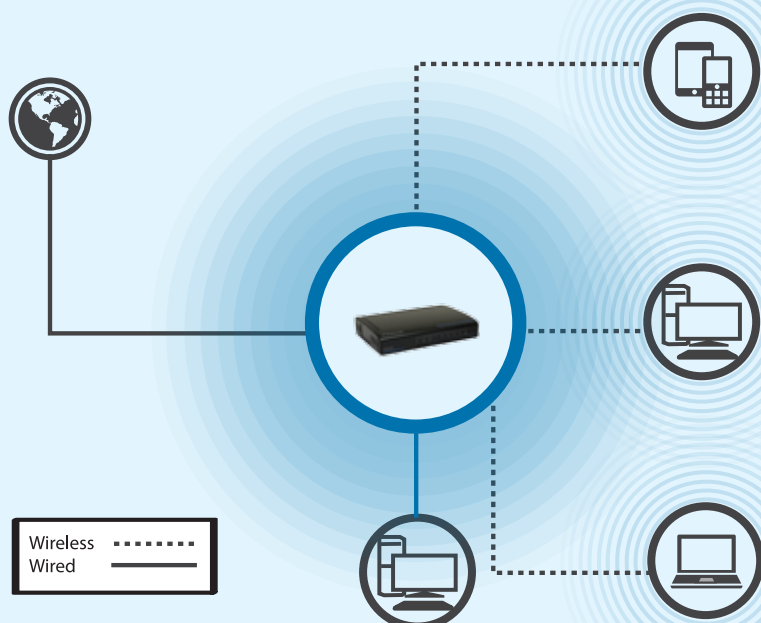
4 Mode Selection

You will now access the setup page. Choose your mode and go through the settings. Refer below for definitions of the different modes or the CD manual if you need more information. If you already know which Mode you would like to use, please proceed to Step 5 on the back of this page.



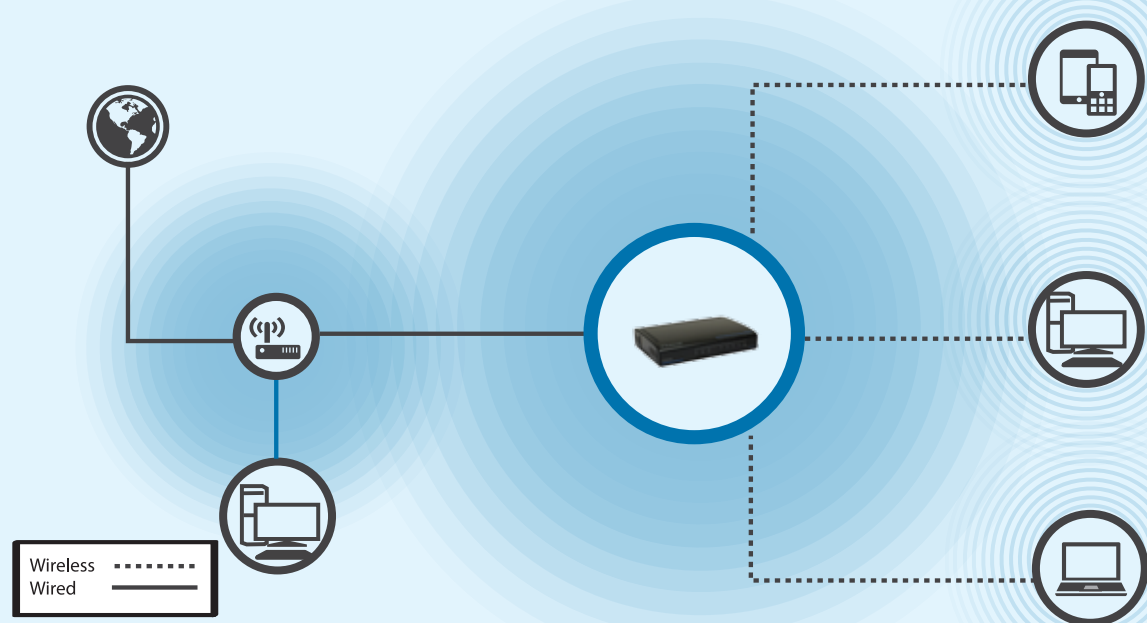
Descriptions of available modes

Router Mode



Router Mode: The HW9ACM acts as a standard wireless router and supports 2.4GHz and 5GHz AC. Use this mode to share an internet connection. Plug your modem provided by your Internet Service Provider into the port labeled WAN. Wired computers can go into LAN ports 1-4.

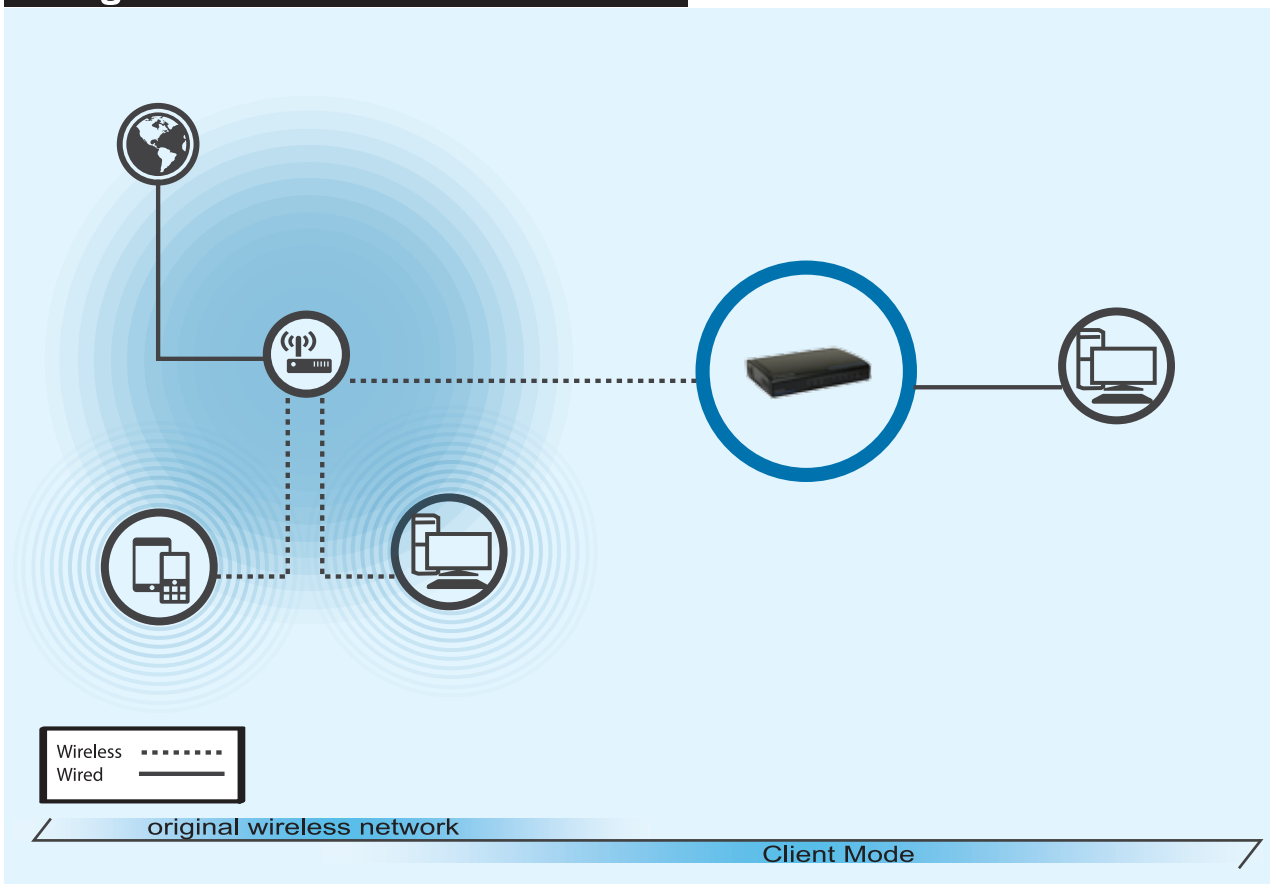
Access Point Mode



Access Point Mode: The HW9ACM acts as a standard wireless access point. It can upgrade your existing 2.4GHz WiFi network to a 5GHz AC or expand it, giving it greater coverage. After setup, be sure to hook the HW9ACM to your network via LAN ports 1-4.

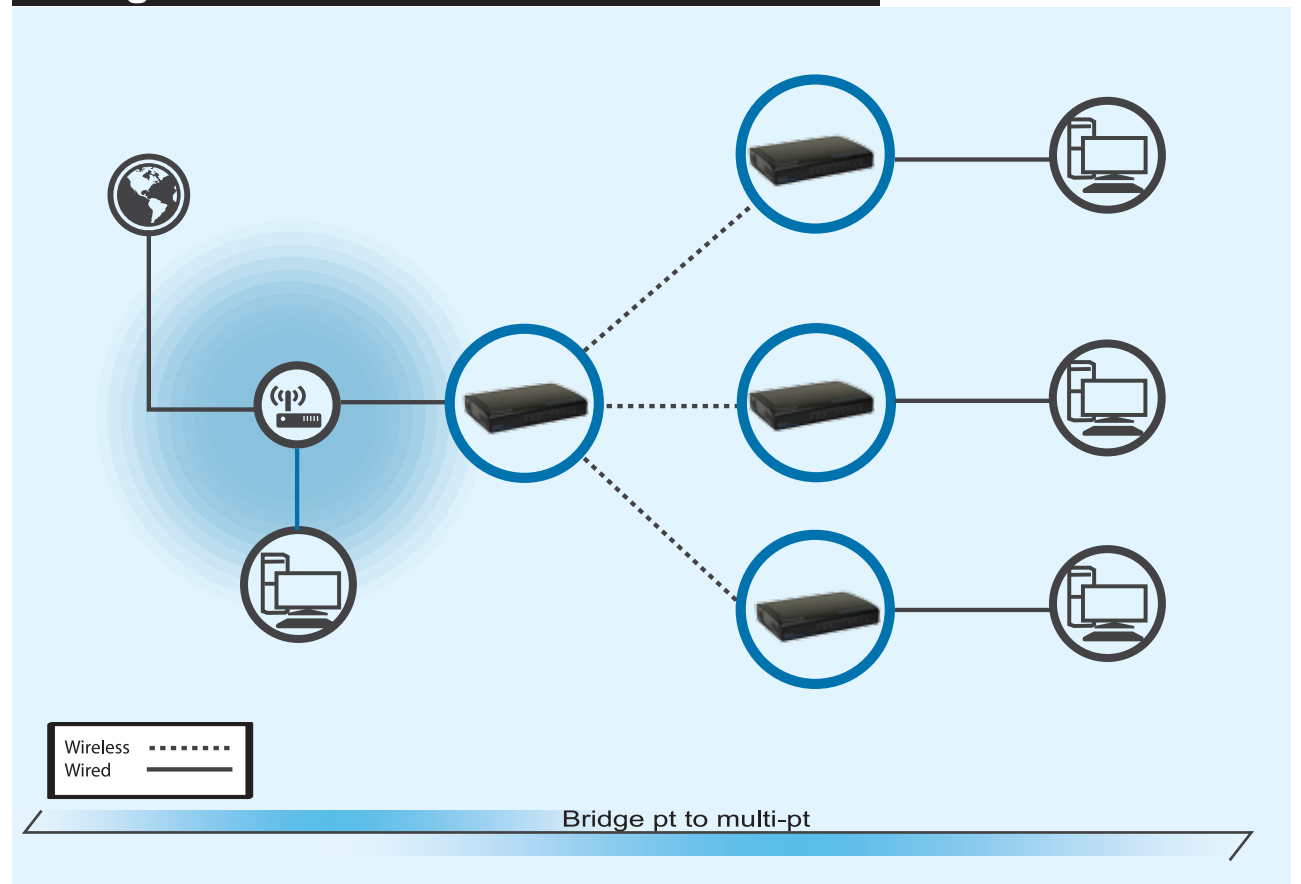
Descriptions of available modes (Cont. from previous page)

Bridge Mode



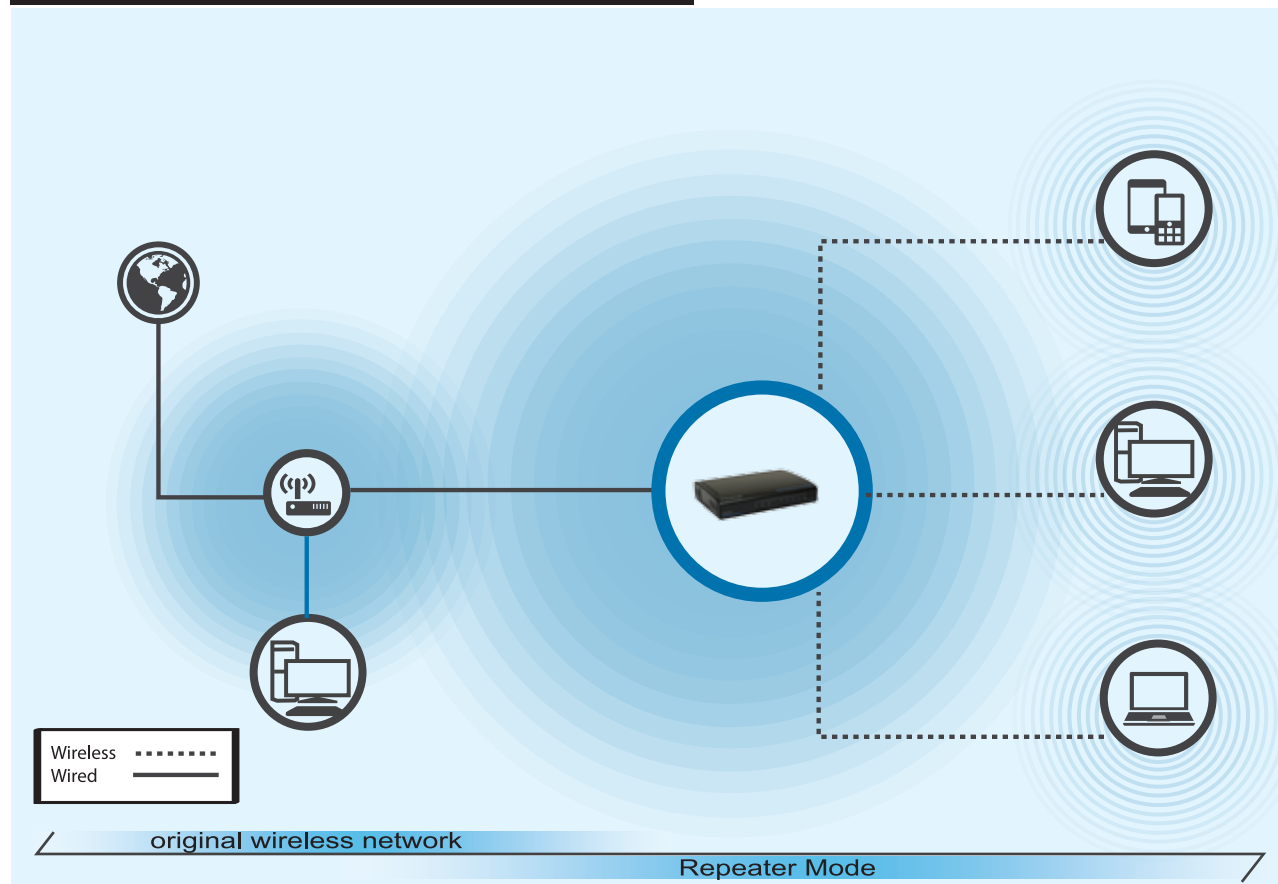
Bridge Mode: The HW9ACM allows you to connect wired devices wirelessly to an existing wireless router or access point. Non-wireless devices can network wirelessly with your Wireless Network. In this mode, the HW9ACM does not broadcast any wireless signal. After setup, be sure to hook it up to client computers/devices via LAN ports 1-4.

Bridge Point to Point Mode/Multi-Point



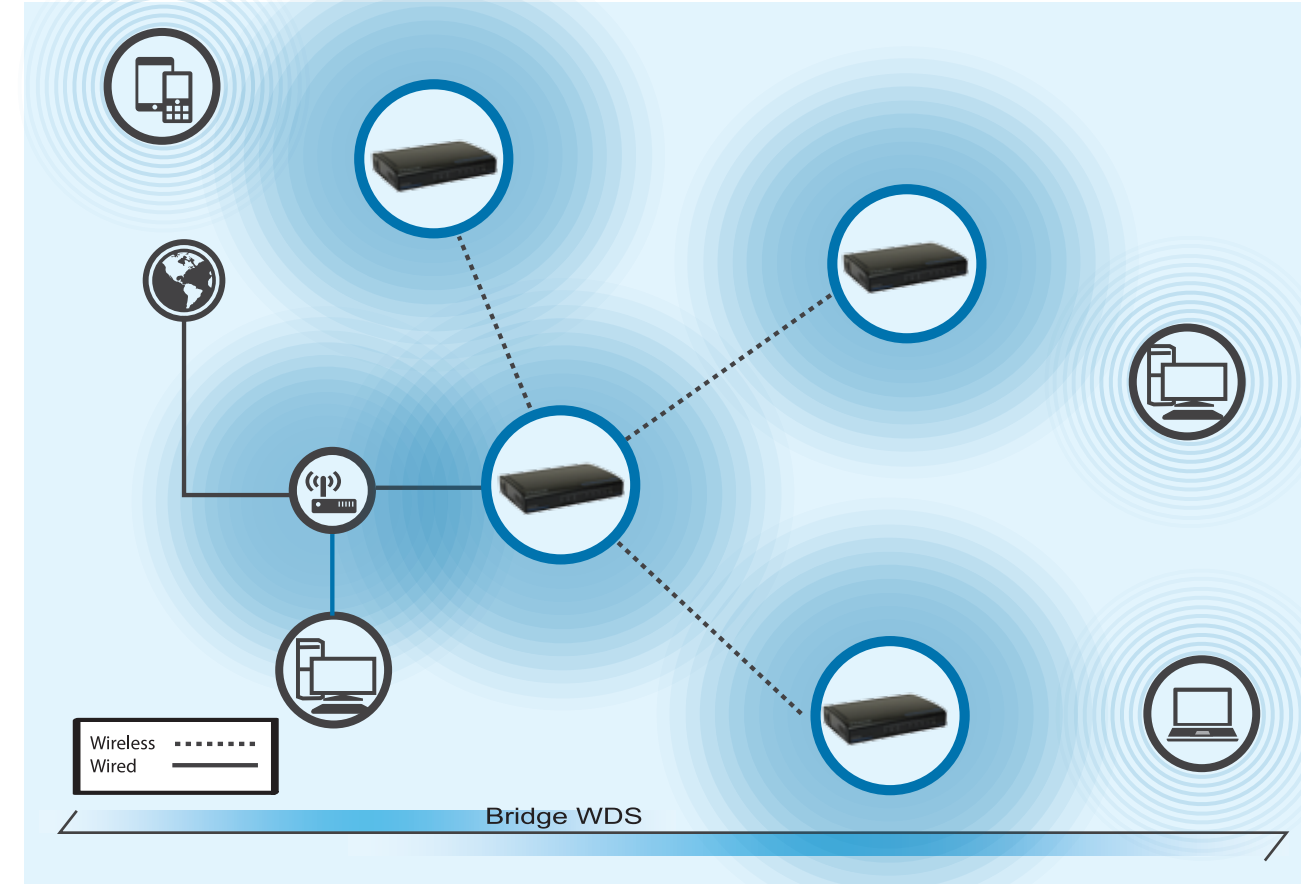
Bridge Point to Point/Multi-Point Mode: The HW9ACM allows you to connect two or more HW9ACM's wirelessly to each other to expand the scope of your network. In this mode, the HW9ACM does not broadcast any wireless signal. After setup, be sure to hook one HW9ACM into the main network and the other HW9ACMs to any client computers/devices via LAN ports 1-4.

Repeater (Range Extender)



Repeater (Range Extender) Mode: The HW9ACM allows you to extend the wireless signal of any wireless router/AP. This will effectively double/enhance the range of your network. All ethernet ports are bridged together.

Bridge WDS Mode

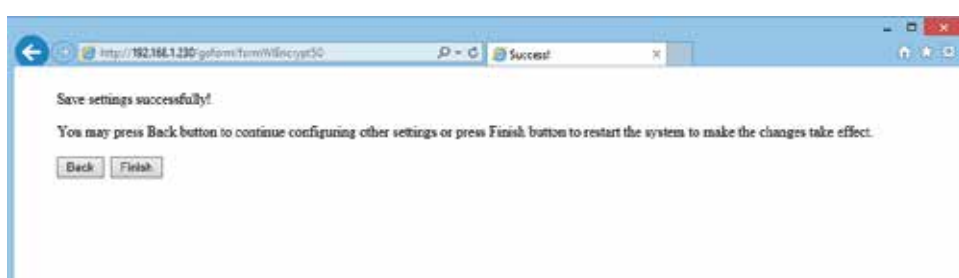


Bridge WDS Mode: The HW9ACM allows you to connect up to 4 HW9ACM's wirelessly to each other to expand the scope of your network. In this mode, the HW9ACM will transmit a wireless signal. Be sure to use the same SSID, channel and security for each. The first HW9ACM must be connected to the primary network via LAN port 1-4 and the others can be stand-alone.

5 Select your mode & connect

Once you have chosen a mode, proceed through the step by step setup wizard guide. If you selected "Router", "Access Point", "Bridge" or "Repeater" mode, you will encounter an encryption page. If you are using "Router" or "Access Point" mode, this is to create a security passcode to prevent unauthorized users from accessing your network. We recommend you use at least WPA2 (AES). If you are using the "Bridge" or "Repeater" mode, you will be entering the security passcode of the network you are connecting (bridging/extending). If you do not know the security key of the network you are connecting to, please contact your network administrator. For a more in depth guide to the setup, refer to the Manual located in the CD.

Once you have completed the setup, the HW9ACM will ask you if you would like to apply these settings. Click "Finish". The device will reset in about 30 seconds.



Congratulations! You have completed the setup for your HW9ACM!