

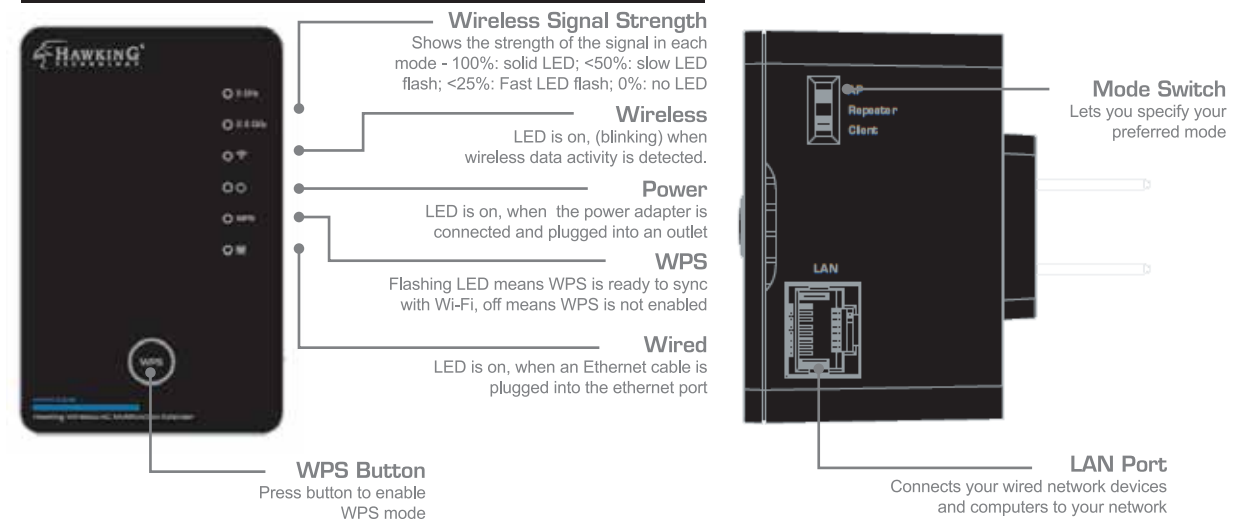
Requirements

- Wired or Wireless Internet Connection
- A Wired or Wireless Network Device (Tablet, Smartphone, Mac or Windows Computer)
- Power Outlet

Package Contents

- 1x Wireless-AC Multifunction Extender
- 1x Setup CD-ROM
- 1x Quick Installation Guide (QIG)

Product Description



Start Here

! Before moving forward, please read through the mode descriptions below to decide which one is right for you. Once you have chosen your mode, you will need to use the mode switch on the side of your device to activate your selected mode, plug it into an A/C power outlet and turn it on.

Choose Your Device (For Repeater/Access Point Mode)

Using a Mac Computer

Click on the Wi-Fi icon on the Apple toolbar. Click on the "Hawking_HW7ACW..." network from the drop-down menu.



Next move onto the section of your chosen mode.

Using a Windows Computer

On the lower right corner, go to your wireless network select "Hawking_HW7ACW..."



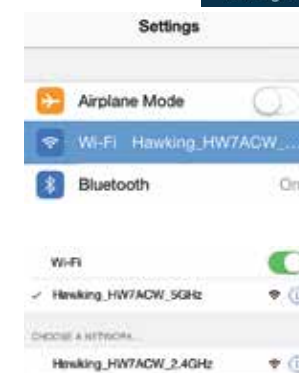
Next move onto the section of your chosen mode.

Using an iPad® or an iPhone®

On your iOS device, locate the "Settings" Button



Turn on the Wi-Fi and click on it to select Wireless Networks.

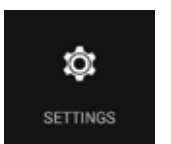


Look for "Hawking_HW7ACW..." Select it to connect.

Next move onto the section of your chosen mode.

Using an Android® device

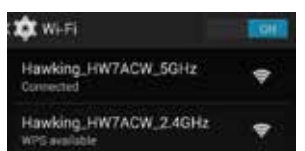
On your android device, locate the "Settings" Button.



Turn on the Wi-Fi and click on it to select Wireless Networks.



Look for "Hawking_HW7ACW..." Select it to connect.



Next move onto the section of your chosen mode.

REPEATER (RANGE EXTENDER) MODE

In this mode, the HW7ACW repeats the wireless signal of an existing wireless router/access point. It relays your wireless signal and seamlessly integrates into your wireless network to provide more coverage. **Make sure the Mode Switch on the top of the device to "Repeater".**

Step 1

Using the same device, open a web browser and type in the following web address in the web address bar:

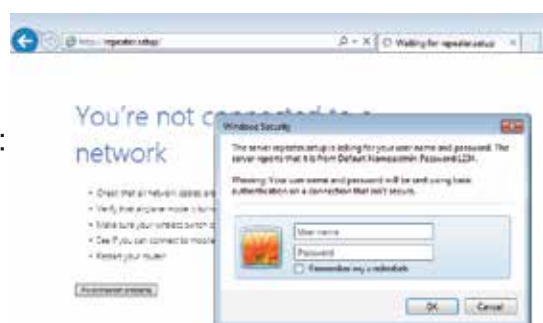
<http://repeater.setup>

(You can also use <http://192.168.1.241>)

Once the page loads, enter the following login information:

Login: **admin**
Password: **1234**

Click **OK** to continue.



Note: After you finish configuration, you can always access the setup page again via <http://repeater.setup> from a device directly connected to the HW7ACW (Wireless or Wired).

Step 2

Click 'Scan' to find your wireless Internet connection. Select a network you would like to extend and click 'Connect'.
If the signal strength is low or your network does not appear, you may need to adjust the location of your HW7ACW. Click 'Scan' to try again.

The device will first connect to 2.4GHz networks and then ask to choose a 5GHz networks afterwards

Scan for a wireless network to extend your Wi-Fi network. Scan

Please choose your wireless network from the list below:

Band	Channel	SSID	Encryption	Authentication	Signal
2.4G	2		AES	WPA/WPA2PSK	6
2.4G	6		AES	WPA/WPA2PSK	5
2.4G	8		TKIP	WPA/WPA2PSK	21
2.4G	7		AES	WPA/WPA2PSK	54
2.4G	7	HawkingTech	AES	WPA/WPA2PSK	100
2.4G	7		AES	WPA/WPA2PSK	88
2.4G	7		OPEN	NONE	81

The Quick Setup will now prompt you to enter a security key only if the network you are connecting to is encrypted. Enter the key and click 'Apply'.

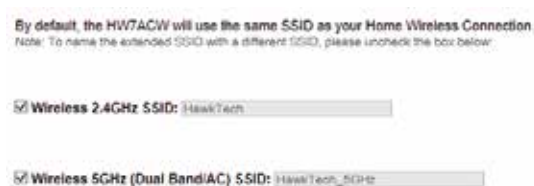


Note: If there is no security on the original network, this step will automatically be skipped.

If you do not know the security key of the network you are connecting to, please consult your network administrator.

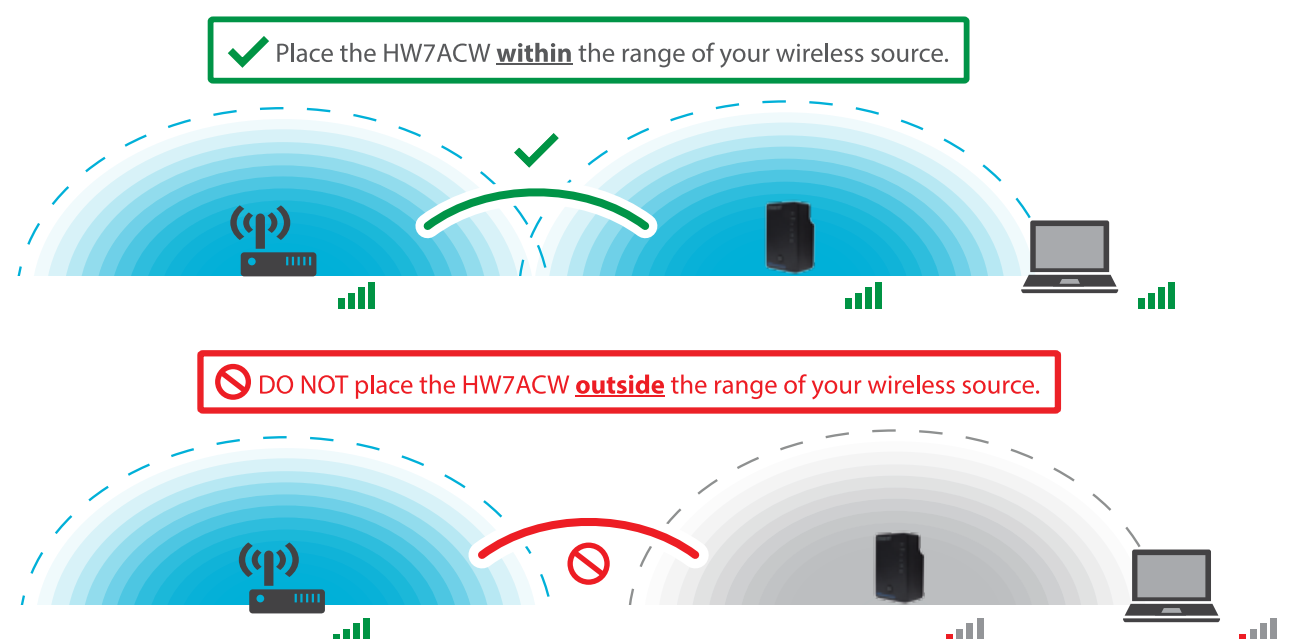
Step 3

After choosing your Wi-Fi networks, the setup will prompt you to assign a wireless name. By default, the HW7ACW will join the original network and have the same name. If you wish to modify this, please refer to the user manual. Otherwise, click 'Finish' and the device will automatically reboot. Congrats you have set it up as an extender.



It is important that you place the HW7ACW where it still can receive signal from the original wireless source. In most cases, place it between the original wireless source and your desired location.

Make sure the Extender is placed in a location where it can receive a strong signal from your desired wireless Internet connection. The Extender will not work without a signal it can repeat.



ACCESS POINT MODE

In the Access Point Mode, The HW7ACW broadcasts Wi-Fi Signal from a wired network (i.e. a wired router) and allows your Wi-Fi enabled devices to connect wirelessly to your network. Note: The HW7ACW must be plugged into the router or network after setup. **Click the “Mode Switch” on the top of the device to “Access Point”.**

Step 1

Using the same device, open a web browser and type in the following web address in the web address bar:

<http://repeater.setup>

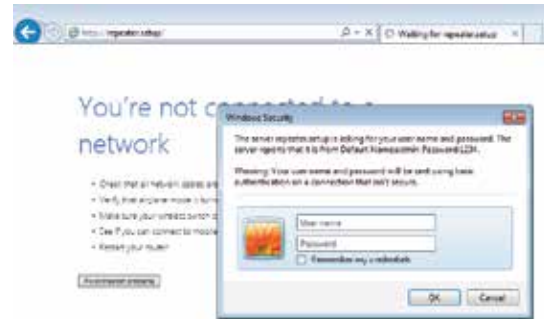
(You can also use <http://192.168.1.242>)

Once the page loads, enter the following login information:

Login: **admin**

Password: **1234**

Click **OK** to continue.



Note: After you finish configuration, you can always access the setup page again via <http://repeater.setup> from a device directly connected to the device (Wireless or Wired).

Step 2

The Main ESSID will be the wireless name of your network.

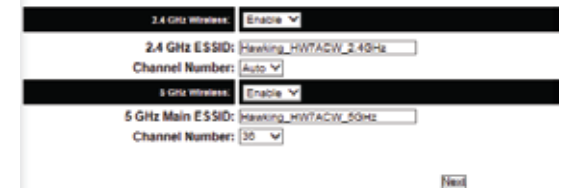
The default wireless broadcast names:

Hawking_HW7ACW_2.4GHz

and

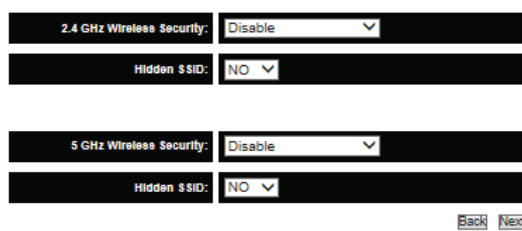
Hawking_HW7ACW_5GHz

If you wish to modify this name, you may do so here. Click “Next”.



Step 3

Hawking recommends you choose a security setting to secure your network from unauthorized users. In the drop down box, please select “WPA (pre-shared key)”, and select WPA2(AES) as the cipher suite. In the pre-shared key field, please type in a password of your choice consisting of at least 8 characters. If you wish to not use security or use a different type of security, you can choose your selection from the drop down menu. Click “Next”.



Step 4

The HW7ACW will show you a summary page. If everything looks correct, click “Apply”.

Congratulations! You have set up the HW7ACW as an Access Point. Please connect the HW7ACW to your network using a network cable in the port labeled “LAN” on the bottom of the unit.

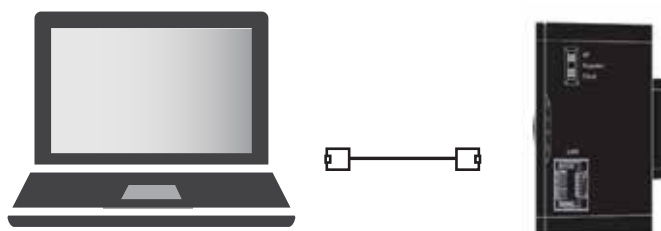


BRIDGE MODE

In this mode, the HW7ACW allows you to connect wired devices to an existing wireless router or access point. Note: Using this mode, the HW7ACW does not broadcast any Wi-Fi signal. It can only link directly to the wireless source. **Click the “Mode Switch” on the top of the device to “Client”.**

Step 1

Using an Ethernet cable, connect your computer to the wired LAN port located on the back of the Extender.



Step 2

Using the same device, open a web browser and type in the following web address in the web address bar:

<http://repeater.setup>

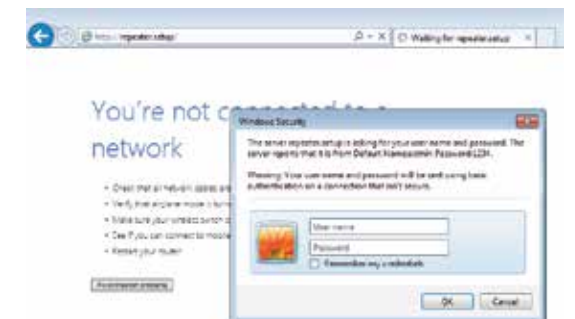
(You can also use <http://192.168.1.242>)

Once the page loads, enter the following login information:

Login: **admin**

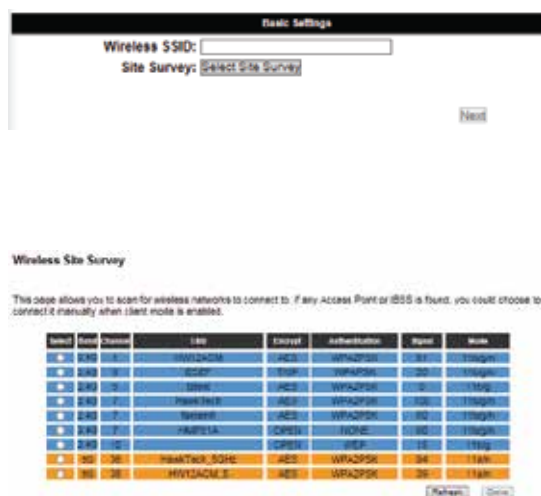
Password: **1234**

Click **OK** to continue.



Step 3

Click “Select Site Survey”. A new window will pop up. Select your network, click “Done”.



Step 4

The Quick Setup will now prompt you to enter a security key only if the network you are connecting to is encrypted. Enter the key and click ‘Next’.



NOTE

1. If there is no security on the original network, this step will automatically be skipped.
2. If you do not know the security key of the network you are connecting to, please consult your network administrator.

Please review your settings. If you wish to edit your selections, click ‘Back’. When you are ready, click ‘apply’ to complete the installation. The HW7ACW will automatically reboot and start bridging your wireless network.



Congratulations! You have set up the HW7ACW as a Wireless Bridge.

NOTE

After you finish configuration, you can always access the setup page again via <http://repeater.setup> from a device directly connected to the device.