



WR300NSI
Portable Wireless-N Repeater



Quick Start Guide

Minimum System Requirements

To configure your WR300NSI repeater your computer must meet the following minimum requirements.

Any operating system can be used

Web Browser

233MHz processor

Ethernet network adapter

Package Contents

Package contents are listed below.

WR300NSI

Ethernet cable

Easy Start Guide

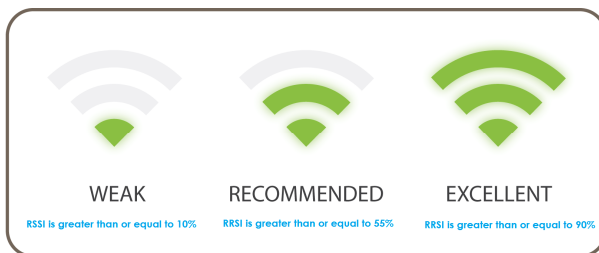
Resource CD (documentation only, contains no applications and all configurations are performed from the WR300NSI's built in web based configuration page)

Device Overview

Front Panel



LABEL	STATE	DESCRIPTION
LED RRSI		
3 BARS	Connected	95% and above RRSI (Excellent)
2 BARS	Connected	55-94% RRSI (Recommended)
1 BAR	Connected	10-54% RRSI (Weak)



Device Overview bottom panel



LABEL	DESCRIPTION
RESET	Press the Reset button for 5 seconds to restore the device to default factory settings
ETHERNET PORT	Connect to computers/Ethernet devices

Device Overview top panel



LABEL	DESCRIPTION
WPS BUTTON	Connect WR300NSI to any WPS capable devices

Configuring the Repeater

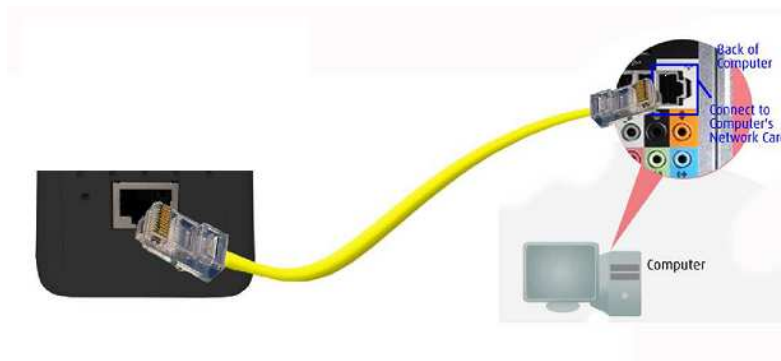
Setting up the device is easy. Follow the steps below to configure the device for your current wireless router/AP. Ensure to disable the wireless connection on the PC or laptop used for configuring the WR300NSI. Please note the WR300NSI will automatically detect your existing wireless channel encryption and security type do not change this

To configure your device via the Web GUI:

- 1.** Connect the WR300NSI to a power outlet.



2. Connect an Ethernet cable from your PC's Ethernet port to the Ethernet port at the base of the WR300NSI.



3. Once a connection to the WR300NSI is established, your PC/laptop will receive an IP address automatically and you will be able to access the configuration page using the web graphical user interface.

4. To access the web GUI, Launch your web browser and input 10.0.10.254 on the address bar.



5. You will now see the following screen below, click on "Quick Connect"



NOTE: If you are connecting to a hidden wireless network, you need to go through the Manual Setup and key-in the information from your existing wireless router/AP manually Or Un check the broadcast SSID option so that your wireless network will remain hidden.

6. Click the Connect button located on the right side of the wireless network you want to connect to. Click Refresh if you don't see your wireless SSID on the list. **NOTE:** You want to connect to your own existing Wireless Network.

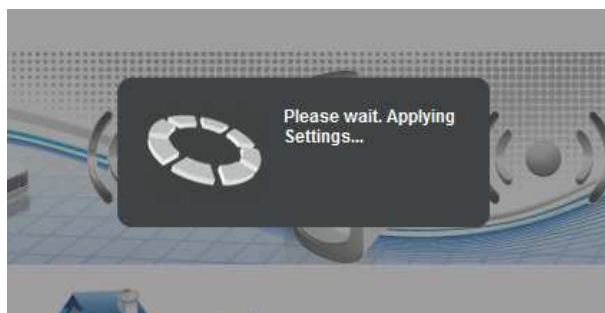
The screenshot shows the 'Available Wireless Networks' section. It includes a 'Refresh' button and a table with the following data:

Channel	SSID	MAC Address	Security	Signal	Mode	Type	WPS	Connect
1	Realtek 287	02:1a:ef:27:0b:70	NONE		11b/g/n	Infrastructure	NO	
6	WGR7000	00:26:75:62:fc:b6	WPA2		11b/g/n	Infrastructure	YES	

7. Input the current wireless network key/passphrase. Click the Apply button to commit the changes. **Note** this is the same password you use to connect to your existing wireless router.

Setup for WR300NSI

Mode of Operation:	Repeater Access Point Bridge
SSID:	WGR7000
MAC Address:	00:26:75:62:fc:b6
Broadcast SSID:	ENABLED DISABLED
Security Mode:	WPA2 PSK
WPA Passphrase:	<input type="text"/> <input type="checkbox"/> Mask
WPA Encryption:	TKIP AES
Channel:	2437MHz (Channel 6)
Enhanced Compatibility:	On Off



Note: The LED status will turn orange and then Green when completed and the above message box will auto close

8. Close the web browser and power down the WR300NSI by unplugging the device from the wall plug. Now, Plug the WR300NSI back to a power outlet at the identified location. Note: it is always best to place the repeater half way between your dead spot and your original wireless router.

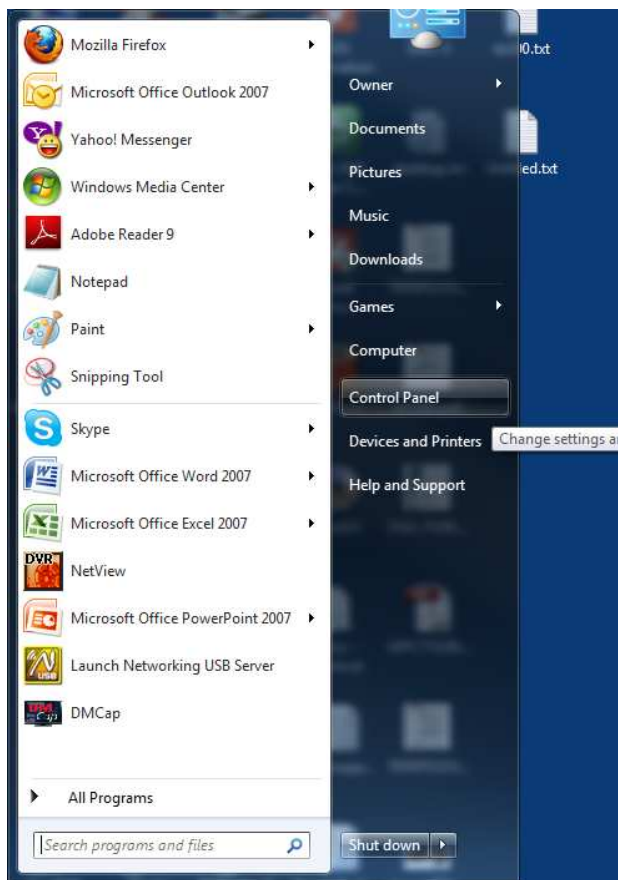
9. You may now use your wireless devices such as laptops, smart phones, etc. with the Repeater.

10. For Access Point (AP) and Wireless to Ethernet Bridge configuration see complete user guide available on the included resource CD.

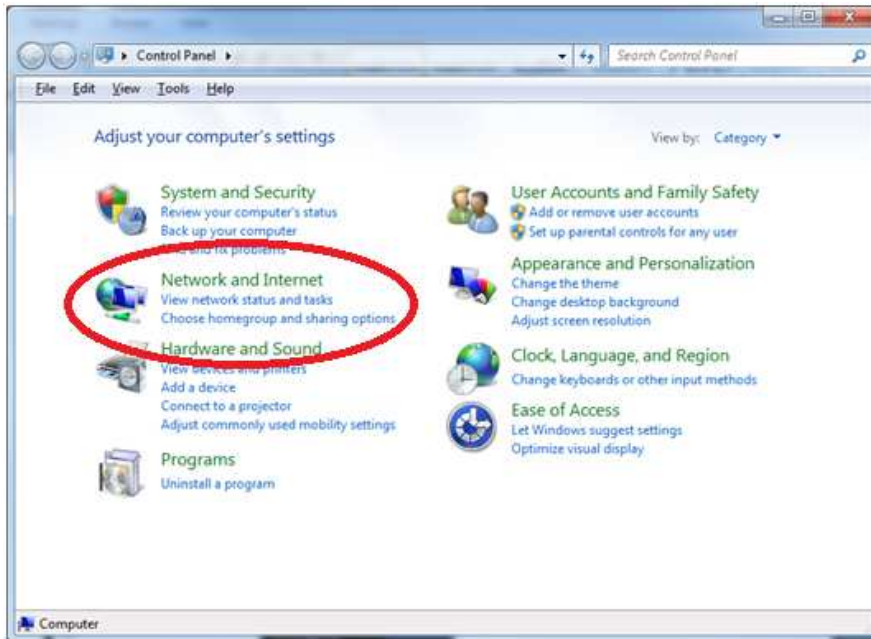
Trouble Shooting:

If you cannot open up the WR300NSI web configuration page after inputting 10.0.10.254 in your web browsers address check the following:

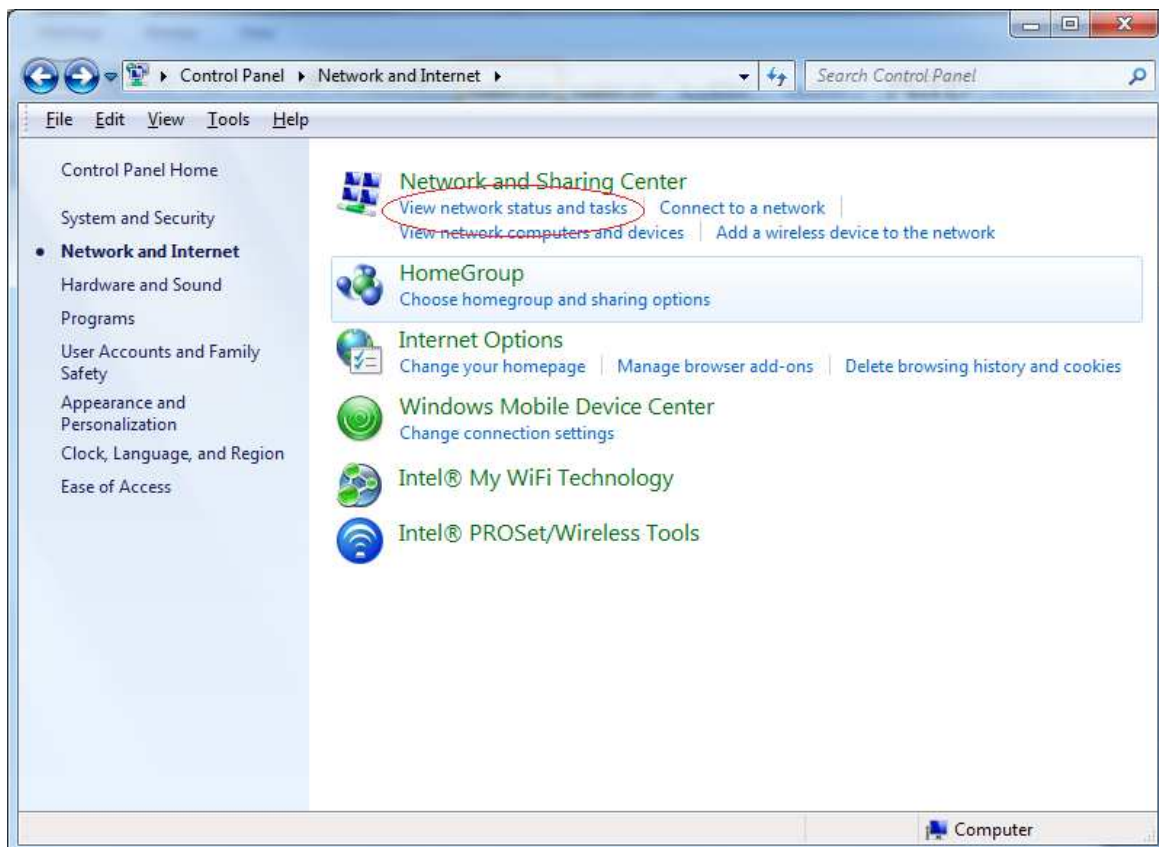
1. Make sure your computer received an IP address in the same range as the repeater. For windows 7 you can check your IP address by clicking on “Start” open the “Control Panel”



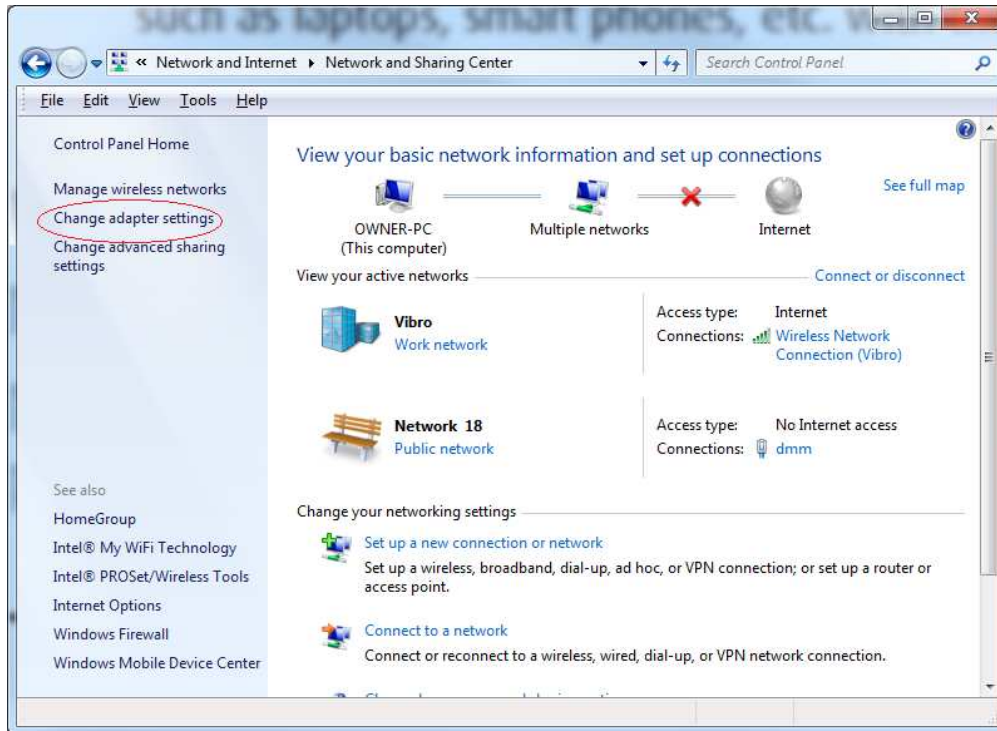
Click on “Network and Internet” as shown below:



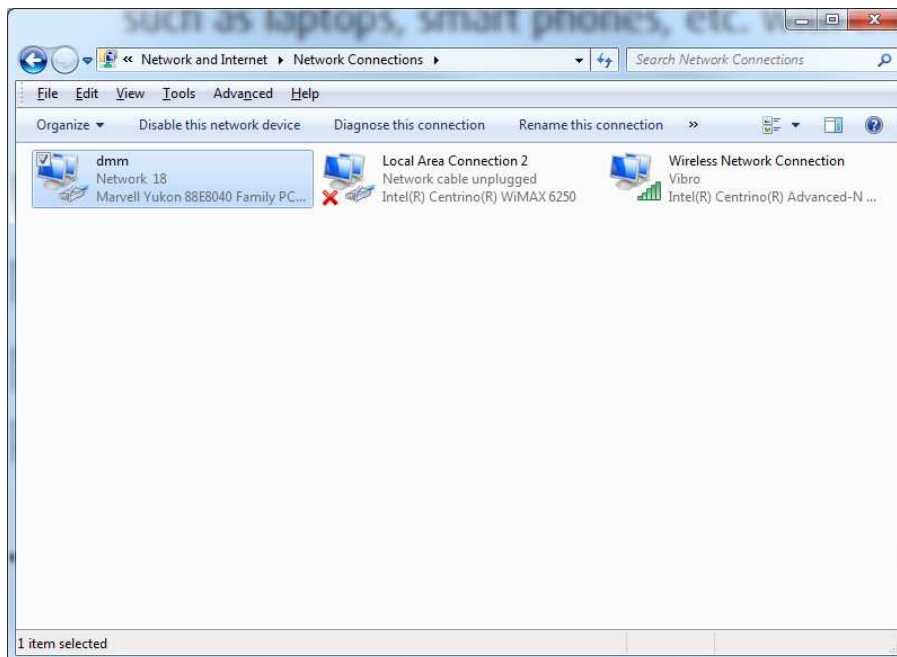
Click on "View network status and tasks" as shown below:



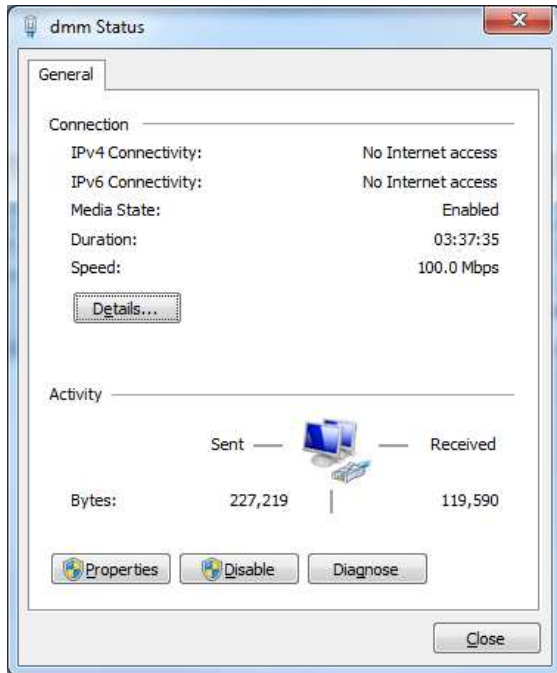
Click on "Change adapter settings" as shown below:



Double click on the Ethernet network name of your wired Ethernet port. See example below:

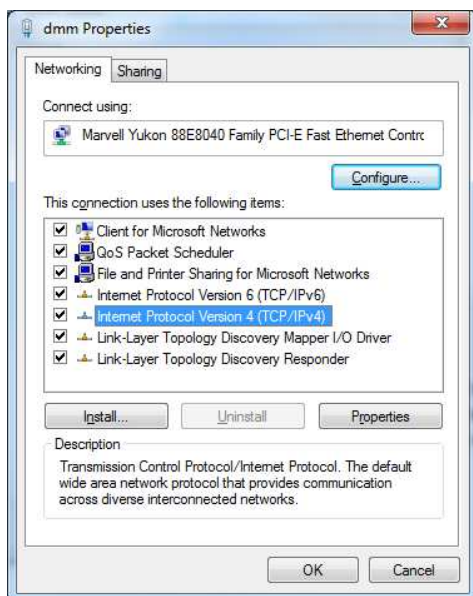


Click on the "Details" tab as shown below:



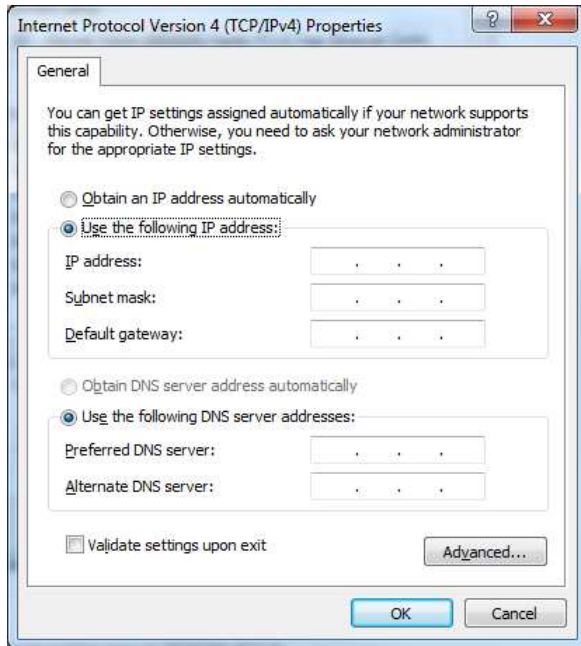
Notice the IPv4 Address is 10.0.10.1, this is correct. The IP address you receive may vary. Example you may get 10.0.10.2, 10.0.10.3, but notice the first three digits are always the same. If you have an IP address that is not in this range you must manually change it in order to configure the repeater.

To change it click on the properties tab on the bottom left hand corner. You will see the image below:



Double click on the "Internet Protocol Version 4 (TCP/IPv4" tab.

You will now see the following:



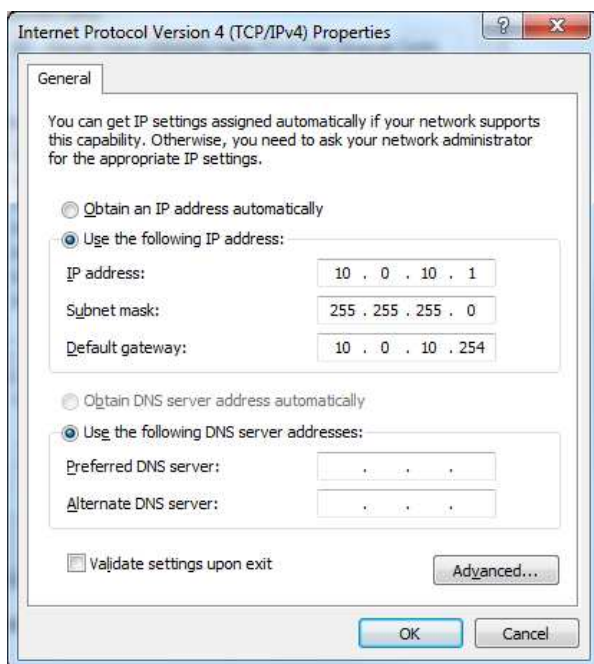
Make sure you select “Use the following IP address” option and enter

10.0.10.1 for the IP address.

Enter 255.255.255.0 for the Subnet mask.

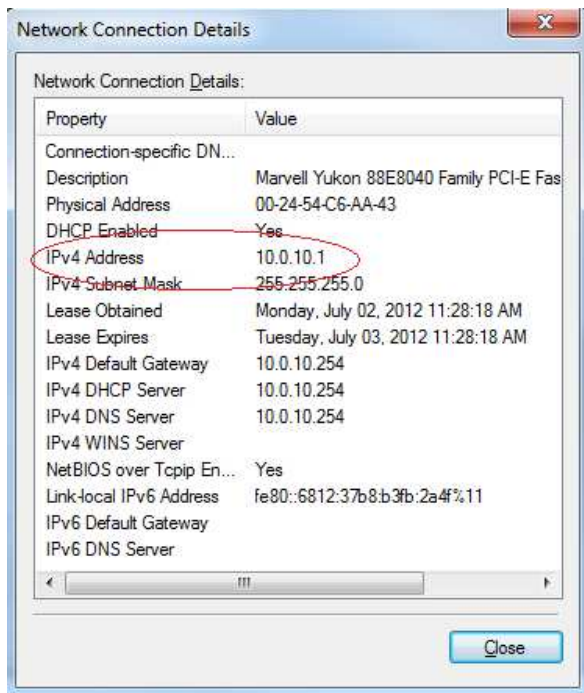
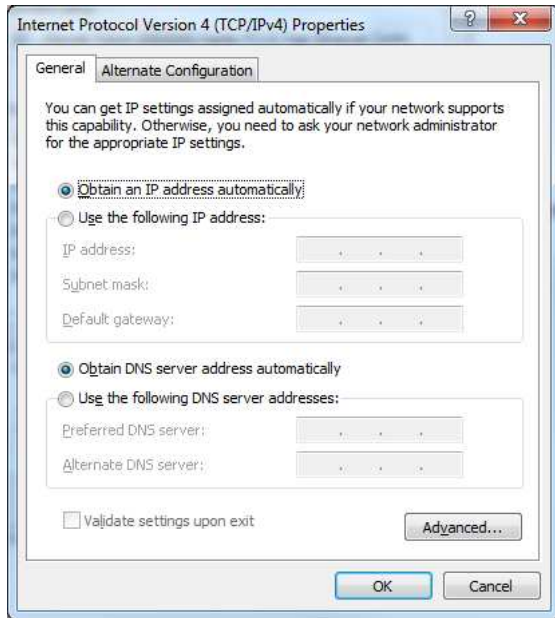
Enter 10.0.10.254 for the Default gateway.

When you are finished it should look like the image below:



Once completed proceed back to step 4 of this guide to complete the WR300NSI configuration.

Note: after you have finished setting up the repeater using manual TCP/IP settings you must go back to the TCP/IP settings and revert back to obtain IP automatically. See image below:



Technical Support

Diamond Technical Support staff is here to help resolve any issues that you may be experiencing. Prior to contacting technical support please make sure you have the following information available.

1. Model #: (Printed on the bar code, located on the box)
2. Installation CD Version: (printed on the CD label)
3. The version of Windows that your system is running.
4. The manufacturer and model # of your computer.
5. CPU type and speed (example: Intel Pentium4 2.4GHZ)
6. A complete description of the problem that you are experiencing including any steps that you have taken to try to resolve the issue.

Technical Support Options

Free Telephone Support

818-357-5165

(long distance rates may apply)

Mon - Fri, 8 - 4:30 PST

<http://www.diamondmm.com>

