

802.11n/b/g Wireless Broadband Router

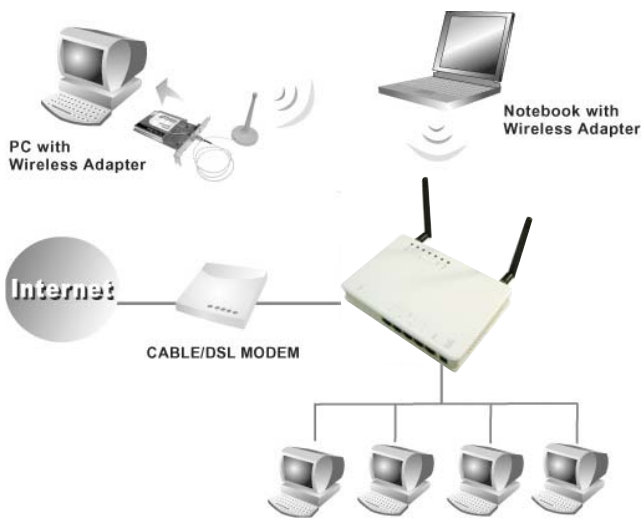
Quick Installation Guide

Check for Packing List

1. One Wireless n/b/g Broadband Router.
2. One Power Adapter.
3. One Ethernet Network Cable.
4. One Set-up CD-ROM with User Manual.
5. One Quick Installation Guide.

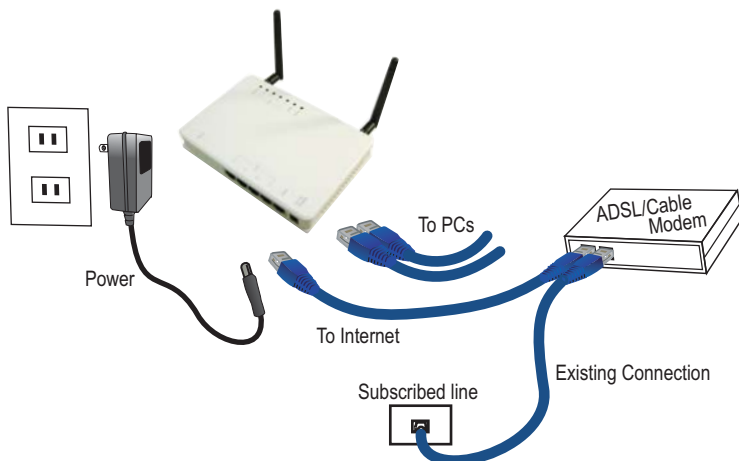


1 Application Diagram



2 Connect the 802.11n/b/g Wireless Router

- 1 Before you begin, ensure that the Wireless Router, the DSL/Cable modem supplied by your IP Provider, and PC are turned off.



- 2 Connect your DSL/Cable Modem to the Internet port on the Wireless Router using a standard RJ-45 Ethernet cable.
- 3 Connect an Ethernet cable to one of the LAN ports on the Wireless Router to the Ethernet port on your PC.
- 4 Turn on the DSL/Cable modem first.
- 5 Then turn on your Wireless Router.
- 6 Check the LEDs:
 - The Power, Internet, and WLAN LED should be ON.
 - For each active LAN (PC) connection, the LAN activity LEDs (1-4) should be ON.
- 7 Turn on your PC.

Notes

Before setting up the Wireless Router, make sure your PCs are configured to "Obtain an IP (or TCP/IP) address automatically."

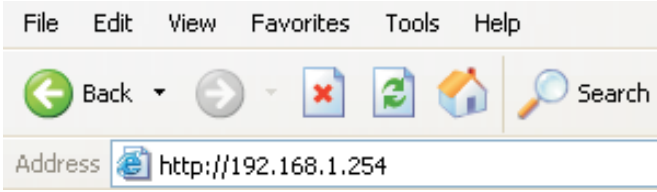
For Windows 2000 & XP

- 1 Click **Start** → Click **Control Panel** → **Network and Internet Connections** → (Right-click on) **Local Area Connection** → **Properties**.
- 2 Make sure the box next to Internet Protocol (TCP/IP) is checked. Click the **Internet Protocol (TCP/IP)** and click the **Properties** button.
- 3 Select "**Obtain an IP address automatically.**" Select "**Obtain DNS server address automatically.**" Then click **OK** to complete the PC configuration.

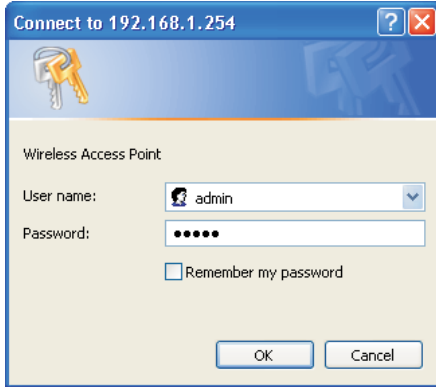
3 Router Configuration

- 8 For Windows 2000 and XP users, your computer should obtain an IP address automatically from the Wireless Router's DHCP server, after you've done the above steps.

9 Start your WEB browser. In the address box, enter the following:
http://192.168.1.254



10 Please enter the username "admin" and password "admin" for login.



11 The Setup Wizard provides primary configuration of this device, you may enter each screen to change the default settings. Simply click on "Setup Wizard" and follow the on screen instructions to complete the installation process.

