

QUICK INSTALLATION GUIDE

Simultaneous Dual-Band Wireless-N Router

Model: WRT400N

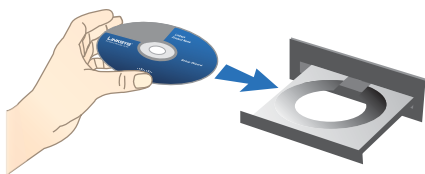


Package Contents

- Simultaneous Dual-Band Wireless-N Router
- Setup Software and User Guide on CD-ROM
- Quick Installation Guide
- Ethernet Network Cable
- Power Adapter

Installation

- A. Insert the Setup CD-ROM into your CD-ROM drive.



- B. If you use a PC, click **Start Setup**, and proceed to step D.

If you use a Mac, skip to step C.



- C. Double-click the CD on your desktop.

Then double-click the **Device Setup** icon.



D. Select your language from the drop down menu. Click **Next**.



E. Select **I accept this agreement**. Click **Next**.



- F. The LELA Setup Wizard displays a series of screens that will guide you through the Router's physical installation and setup process. Click **Next** and follow the instructions in these screens.





- G. Follow the instructions until you see the *Network Configured* screen. Click on *Learn about connecting other computers to this network* to view sharing options, or click **Next** to finish the setup.



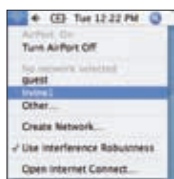
Congratulations! Setup is complete.

Wireless Connection to Your PC

The Setup Wizard will guide you through the steps to install Linksys EasyLink Advisor on your computer. When the *Welcome* screen appears, click **Go Wireless**, and Linksys EasyLink Advisor will help you create a wireless connection between the Router and your computer. Then follow the on-screen instructions.

Wireless Connection to Your Mac

1. Click the **Wireless**  icon on your desktop.
2. Select your wireless network.



3. If security is enabled, you will be prompted for a password. (The password, also known as a network security key, was saved in the Linksys.txt file on your desktop. Double-click the file to open it.)



Enter the password, and then click **OK**.



Our packaging and documents are made from minimum 80% recycled content and printed with vegetable-based ink.

Additional information or troubleshooting help is available in the User Guide; visit www.linksys.com to download it. Additional support is also available by phone or online.

24-Hour Technical Support
800-326-7114

Website
<http://www.linksys.com>

Support
<http://www.linksys.com/support>

RMA (Return Merchandise Authorization)
<http://www.linksys.com/warranty>

FTP Site
<ftp://ftp.linksys.com>

Sales Information
800-546-5797 (800-LINKSYS)

Linksys, Cisco and the Cisco Logo are registered trademarks or trademarks of Cisco Systems, Inc. and/or its affiliates in the U.S. and certain other countries. Copyright © 2008 Cisco Systems, Inc. All rights reserved. Other brands and product names are trademarks or registered trademarks of their respective holders.

LINKSYS® by Cisco

