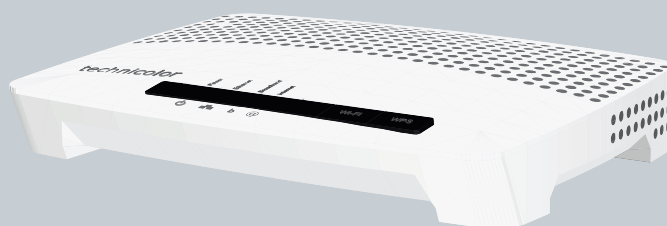


technicolor



SETUP AND USER GUIDE

Technicolor TG582n

SETUP AND USER GUIDE

Technicolor TG582n

Copyright

Copyright ©1999-2011 Technicolor. All rights reserved.

Distribution and copying of this document, use and communication of its contents is not permitted without written authorization from Technicolor. The content of this document is furnished for informational use only, may be subject to change without notice, and should not be construed as a commitment by Technicolor. Technicolor assumes no responsibility or liability for any errors or inaccuracies that may appear in this document.

THOMSON Telecom Belgium NV
Prins Boudewijnlaan, 47
2650 Edegem
Belgium

<http://www.technicolor.com>

Trademarks

The following trademarks may be used in this document:

- DECT™ is a trademark of ETSI.
- Bluetooth® word mark and logos are owned by the Bluetooth SIG, Inc.
- Ethernet™ is a trademark of Xerox Corporation.
- Wi-Fi®, WMM® and the Wi-Fi logo are registered trademarks of the Wi-Fi Alliance®. Wi-Fi CERTIFIED, Wi-Fi ZONE, Wi-Fi Protected Access, Wi-Fi Multimedia, Wi-Fi Protected Setup, WPA, WPA2 and their respective logos are trademarks of the Wi-Fi Alliance®.
- UPnP™ is a certification mark of the UPnP™ Implementers Corporation.
- DLNA® is a registered trademark, DLNA disc logo is a service mark, and DLNA Certified is a trademark of the Digital Living Network Alliance. Digital Living Network Alliance is a service mark of the Digital Living Network Alliance.
- Microsoft®, MS-DOS®, Windows®, Windows NT® and Windows Vista® are either registered trademarks or trademarks of Microsoft Corporation in the United States and/or other countries.
- Apple® and Mac OS® are registered trademarks of Apple Computer, Incorporated, registered in the United States and other countries.
- UNIX® is a registered trademark of UNIX System Laboratories, Incorporated.
- Adobe®, the Adobe logo, Acrobat and Acrobat Reader are trademarks or registered trademarks of Adobe Systems, Incorporated, registered in the United States and/or other countries.

Other brands and product names may be trademarks or registered trademarks of their respective holders. All other logos, trademarks and service marks are the property of their respective owners, where marked or not.

Document Information

Status: v1.0 (May 2011)

Reference: DMS-CTC-20101206-0009

Short Title: Setup and User Guide Technicolor TG582n R8.4.x

1	Getting Started	3
1.1	Features At A Glance.....	4
1.2	Components.....	5
1.2.1	Power.....	6
1.2.2	Local Network Connection.....	7
1.2.3	Broadband Connection.....	8
1.2.4	Buttons.....	9
1.2.5	Status LEDs.....	10
1.3	Preparing for the Installation.....	12
2	Guided Installation.....	13
3	Manual Installation.....	15
3.1	Connecting the Technicolor Gateway to your Service Provider's Network.....	16
3.2	Powering on the Technicolor Gateway.....	18
3.3	Connecting Your Network Devices to the Technicolor Gateway.....	19
3.3.1	Setting up a Wireless Connection.....	20
3.3.2	Setting up a Wired Connection.....	21
3.4	Configure the Technicolor Gateway.....	22
3.5	Setting Up the 3G Fall-Back WAN Connection.....	23
3.5.1	Managing your Mobile Connection with the Technicolor Gateway GUI.....	24
3.5.2	Inserting a Mobile USB Adapter.....	25
4	Configuration Tools.....	27
4.1	Technicolor Gateway GUI.....	28
4.1.1	Access.....	29
4.1.2	Components.....	30
4.1.3	Protecting Access to the Technicolor Gateway.....	32
4.2	Backing Up/Restoring your Configuration.....	33
4.3	Access From the Internet.....	34
5	The Technicolor Gateway Wireless Access Point.....	35
5.1	Connecting Your Wireless Client via WPS.....	36
5.2	Connecting Your Wireless Client without WPS.....	38
5.3	Securing Your Wireless Connection.....	39
6	Saving Energy with Your Technicolor Gateway.....	41
6.1	Code of Conduct.....	42
6.2	ECO Manager.....	43
6.3	Manually Switching Off Services to Reduce Power.....	44
7	Sharing Content on your Technicolor Gateway.....	45
7.1	The Network File Server.....	47

7.2	The UPnP AV Media Server	50
7.2.1	Configuring the UPnP AV Media Server	51
7.2.2	Using the UPnP AV Media Server	52
7.3	The FTP Server	54
7.4	Managing your Shared Content.....	56
7.5	Safely Removing your USB Storage Device.....	58
8	Technicolor Gateway Network Services.....	59
8.1	UPnP.....	60
8.1.1	Accessing Your Technicolor Gateway via UPnP.....	61
8.1.2	Managing your Internet connection via UPnP.....	62
8.1.3	Configuring UPnP on the Technicolor Gateway.....	64
8.1.4	Installing UPnP on Windows XP.....	65
8.2	Assigning a service (HTTP, FTP,...) to a Computer.....	67
8.3	Dynamic DNS	69
9	Internet Security.....	71
9.1	Parental Control	72
9.1.1	Configuring Content-based Filtering.....	74
9.1.2	Adding Rules for Address-Based Filtering.....	75
9.2	Firewall.....	77
10	Support.....	79
10.1	Setup Troubleshooting.....	80
10.2	General Technicolor Gateway Troubleshooting.....	81
10.3	Wired Connection Troubleshooting.....	82
10.4	Wireless Connection Troubleshooting.....	83
10.5	Reset to Factory Defaults.....	84

About this Setup and User Guide

In this Setup and User Guide

The goal of this Setup and User Guide is to show you:

- Set up your Technicolor Gateway and local network
- Configure and use the main features of your Technicolor Gateway.

For more advanced scenarios and features visit the documentation pages on www.technicolor.com.

Used Symbols



The **danger** symbol indicates that there may be a possibility of physical injury.



The **warning** symbol indicates that there may be a possibility of equipment damage.



The **caution** symbol indicates that there may be a possibility of service interruption.



The **note** symbol indicates that the text provides additional information about a topic.

Terminology

Generally, the Technicolor TG582n will be referred to as Technicolor Gateway in this Setup and User Guide.

Typographical Conventions

Following typographical convention is used throughout this manual:

- This sample text indicates a hyperlink to a Web site.

Example: For more information, visit us at www.technicolor.com.

- This sample text indicates an internal link.

Example: If you want to know more about guide, see “*About this Setup and User Guide*” on page 1.

- **This sample text** indicates an important content-related word.

Example: To enter the network, you **must** authenticate yourself.

- **This sample text** indicates a GUI element (commands on menus and buttons, dialog box elements, file names, paths and folders).

Example: On the **File** menu, click **Open** to open a file.

1 Getting Started

Introduction

This chapter gives you a brief overview of the main features and components of the Technicolor Gateway. After this chapter we will start with the installation.



Do not connect any cables to the Technicolor Gateway until instructed to do so.

1.1 Features At A Glance

Introduction

This section provides a brief overview of the main features of your Technicolor Gateway.

Internet connection features

- **Broadband Internet access** via the integrated **DSL** modem.
The first chapters describe how to connect your Technicolor Gateway to the Internet.
- **3G (Fall-back) High-speed Internet Access** via the optional mobile USB adaptor.
For more information, see “3.5 Setting Up the 3G Fall-Back WAN Connection” on page 23.
- **Internet Security** for your entire network.
For more information, see “9 Internet Security” on page 71.
- **Useful network tools** like *UPnP*, *Dynamic DNS* and many more.
For more information, see “8 Technicolor Gateway Network Services” on page 59.

Local networking features

- **Wired access** for your local network devices via the Ethernet interface.
For more information, see “3.3.2 Setting up a Wired Connection” on page 21.
- **Wireless access** for your local network devices via the integrated IEEE 802.11n wireless access point.
For more information, see “5 The Technicolor Gateway Wireless Access Point” on page 35.
- An **Integrated Media Server** allowing you to share your media with media players and other network devices. For more information, see “7 Sharing Content on your Technicolor Gateway” on page 45.

ECO label

Technicolor’s ECO label guarantees you that the Technicolor Gateway is able to reduce its power consumption to an absolute minimum. For more information, see “6 Saving Energy with Your Technicolor Gateway” on page 41.

Technicolor Gateway configuration tools

- The **Technicolor Gateway Setup CD** allows you to configure your Technicolor Gateway and helps you to connect your computers to the Technicolor Gateway.
- The **Technicolor Gateway GUI** allows you to configure your Technicolor Gateway via your web browser.
For more information, see “4.1 Technicolor Gateway GUI” on page 28.

1.2 Components

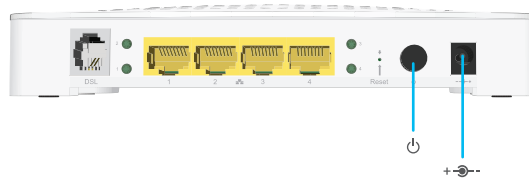
Overview

This section provides an overview of the different components of the Technicolor Gateway:


Topic	Page
<i>1.2.1 Power</i>	<i>6</i>
<i>1.2.2 Local Network Connection</i>	<i>7</i>
<i>1.2.3 Broadband Connection</i>	<i>8</i>
<i>1.2.4 Buttons</i>	<i>9</i>
<i>1.2.5 Status LEDs</i>	<i>10</i>

1.2.1 Power

Overview



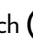
Power inlet

The power inlet (+  -) allows you to connect the power supply.



Only use the power supply delivered with your Technicolor Gateway.

Power switch

The power switch () allows you to power on/off your Technicolor Gateway.

1.2.2 Local Network Connection

Overview



Wireless Access Point

The built-in WiFi-certified wireless access point provides wireless access to your WiFi-certified wireless clients.

For more information, see “5 The Technicolor Gateway Wireless Access Point” on page 35.

Ethernet switch

The Ethernet switch (🔌) allows you to connect an Ethernet device (for example, a computer) to your local network. For more information, see “3.3.2 Setting up a Wired Connection” on page 21.

A LED may be provided per Ethernet port to indicate link integrity (or activity).

LED Status	Description
Solid on	Device connected.
Blinking	Device connected and sending/receiving data.
Off	No device connected.

USB Port

The USB port (🔌) can be used to:

- Connect a USB mass storage device to **share your content** (for example, music, movies,...):
 - ▶ On your local network via the **Network File server** or the **UPnP AV Media Server**.
 - ▶ On Internet via **FTP**.

For more information, see “7 Sharing Content on your Technicolor Gateway” on page 45.

1.2.3 Broadband Connection

Overview

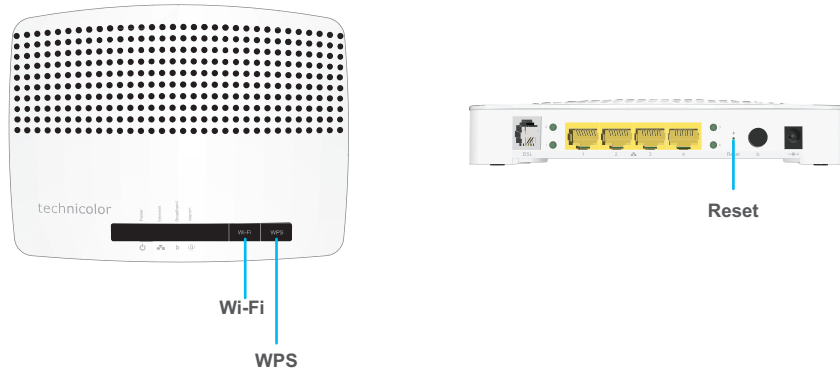


DSL port

This port can be used to connect your Technicolor Gateway to your service provider's DSL network.

1.2.4 Buttons

Overview




Wi-Fi button

The **Wi-Fi** button allows you to disable your wireless access point. You can do this when you do not have any devices that are connected to the wireless access point. This allows you to save the energy that the Technicolor Gateway would be using for the wireless access point. For more information, see *“Wi-Fi button” on page 44.*

The LED on the **Wi-Fi** provides you information about the status of your wireless connection. For more information, see *“WiFi LED” on page 11.*

WPS button

The WPS () button allows you to add new wireless clients to your network in a swift and easy way, without the need to enter any of your wireless settings manually.

For more information, see *“5.1 Connecting Your Wireless Client via WPS” on page 36.*

Reset button

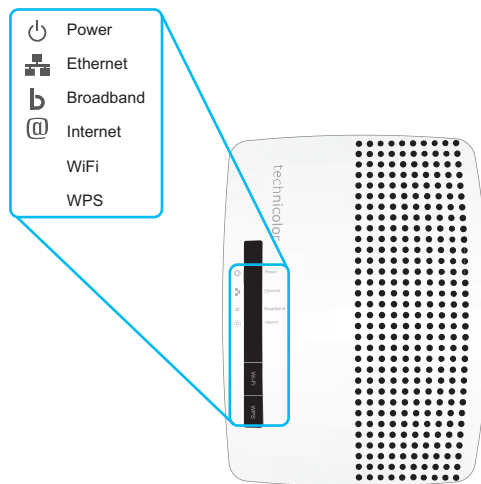
The Reset button allows you to reset your Technicolor Gateway to factory defaults.

For more information, see *“10.5 Reset to Factory Defaults” on page 84.*

1.2.5 Status LEDs

Introduction

On the top panel of your Technicolor Gateway, you can find a number of status LEDs, indicating the state of the device.



Power LED

Colour	State	Description
Green	Solid on	Power on, normal operation
Red	Solid on	Power on, self-test failed, indicating device malfunction
Orange	Solid on	Bootloader selftest
	Blinking	Bootloader active (during upgrade)
Off		The Technicolor Gateway is powered off.

Ethernet LED

Colour	State	Description
Green	Solid on	Network device connected to the Ethernet switch.
	Blinking	Network device connected to the Ethernet switch and sending/receiving data.
Off		No Ethernet connection on your local network

WiFi LED

Colour	State	Description
Green	Solid on	No wireless activity, WPA(2) encryption
	Blinking	Wireless activity, WPA(2) encryption
Orange	Solid on	No wireless activity, WEP encryption
	Blinking	Wireless activity, WEP encryption
Red	Solid on	No wireless activity, no security
	Blinking	Wireless activity, no security
Red/green	Toggling	Wireless client registration phase
Off		Wireless access point disabled

For more information about the WiFi button, see “Wi-Fi button” on page 44.

Broadband LED

Colour	State	Description
Green	Solid on	DSL line synchronised
	Blinking	Trying to detect carrier signal or pending DSL line synchronisation
Off		Technicolor Gateway powered off.

Internet LED

Colour	State	Description
Green	Solid on	Connected to the Internet, no activity
	Blinking	Connected to the Internet, sending/receiving data
Red	Solid on	Failed to setup the Internet connection
Off		No Internet connection

WPS LED

Colour	State	Description
Green	Solid On	Client successfully registered via WPS
Orange	Blinking	WPS registration ongoing
Red	Blinking	Error occurred

For more information about WPS, see “5.1 Connecting Your Wireless Client via WPS” on page 36.

1.3 Preparing for the Installation

DSL service requirements

Make sure that:

- Your service provider activated the DSL service on your telephone line by your service provider.
- You have the installation information (for example, user name, password, service profile,...) provided by your service provider at hand.

Local connection requirements

Wireless connection

If you want to connect your computer using a wireless connection, your computer must be equipped with a WiFi-certified wireless client adapter.

Wired connection

If you want to connect a computer using a wired connection, your computer must be equipped with an Ethernet Network Interface Card (NIC).

Start with the installation

You are now ready to start with the installation of your Technicolor Gateway.

2 Guided Installation

Introduction

In the guided installation, the Setup wizard on the Setup CD will assist you with the installation of your Technicolor Gateway. If you do not want to use the Setup CD or if the Setup CD is not included in your package, follow the installation procedure described in “3 Manual Installation” on page 15.

Requirements

To use the guided installation you must comply with the following requirements:

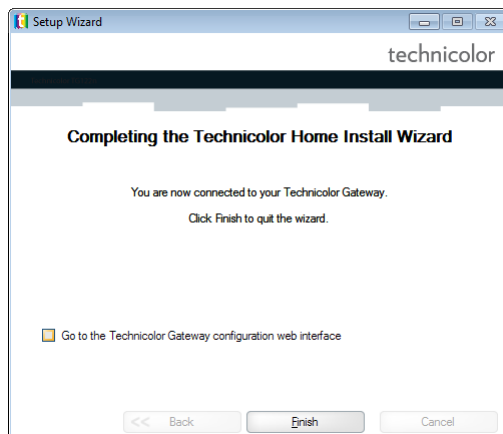
- Your computer must run one of the following operating systems:
 - ▶ Microsoft Windows 7 and higher
 - ▶ Microsoft Windows 7 x64 and higher
 - ▶ Microsoft Windows Vista and higher
 - ▶ Microsoft Windows Vista x64 and higher
 - ▶ Microsoft Windows XP Service Pack 2 (SP2) and higher
 - ▶ Mac OS X 10.6 (Snow Leopard)
 - ▶ Mac OS X 10.5 (Leopard)
- You must have administrative rights on your computer.

If you do not comply with these requirements, use the “3 Manual Installation” on page 15.

Running the Setup wizard

To start the Setup wizard:

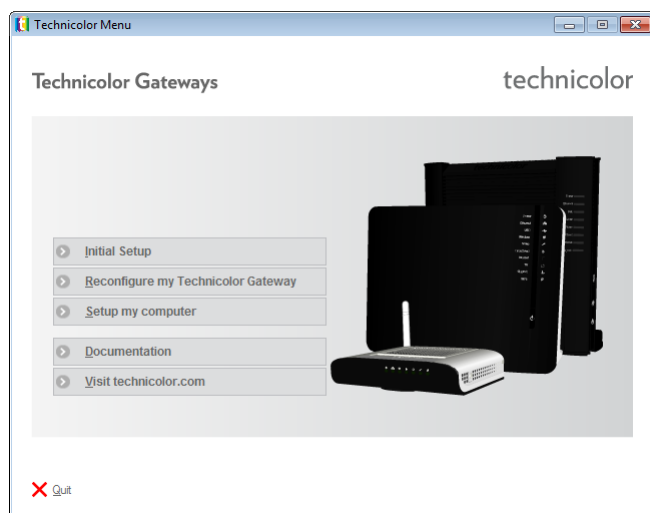
- 1 Insert the Setup CD into your computer’s CD- or DVD drive.
- 2 If your computer runs:
 - ▶ Microsoft Windows: The Setup CD starts automatically.
If the Setup CD does not autostart, see “The Setup CD does not start automatically” on page 80.
 - ▶ Mac OS X: Double-click **Menu** in the window with the content of the Setup CD.
- 3 Select the language of your choice and click **OK**.
- 4 The Setup wizard will now guide you through the installation of your Technicolor Gateway.
- 5 At the end of the installation, the following screen appears:



Select **Go to the Technicolor Gateway web interface** if you want to go to the *Technicolor Gateway GUI* after closing the wizard. On the *Technicolor Gateway GUI*, you can configure all services of your Technicolor Gateway.

- 6 Click **Finish**.
- 7 The **CD menu** appears.

CD Menu



On the **CD Menu**, you can click:

- **Initial Setup** to connect your computer to the Technicolor Gateway and configure your local network.
 - **Reconfigure my Technicolor Gateway** to fully reconfigure your Technicolor Gateway.
 - ⚠ If you reconfigure your Technicolor Gateway via the **CD menu**, the Technicolor Gateway will be reconfigured from scratch. All your current settings will be lost. If you only want to make small changes to your configuration (for example, changing the security), we recommended you to do this via the *Technicolor Gateway GUI*. For more information, see “4.1 Technicolor Gateway GUI” on page 28.
 - **Setup my computer** to connect your computer to the Technicolor Gateway network.
 - **Documentation** to view a list of the documentation that is available for your Technicolor Gateway.
 - **Visit technicolor.com** to visit the online support sections.
- ℹ Actual available items depend on the Setup CD delivered with your Technicolor Gateway.

In case of problems

If you encounter problems during this installation please refer to “10.1 Setup Troubleshooting” on page 80.

Backup your configuration

Once you successfully installed your Technicolor Gateway, it is recommend to backup your configuration. This will allows you to return to this configuration when needed (for example, after misconfiguration).

For more information, see “4.2 Backing Up/Restoring your Configuration” on page 33

3 Manual Installation

Installation

This chapter will help you to manually install your Technicolor Gateway.

Setting up your network

Proceed as follows:

- 1 Connect your Technicolor Gateway to your service provider's network.
For more information, see *"3.1 Connecting the Technicolor Gateway to your Service Provider's Network"* on page 16.
- 2 Power on the Technicolor Gateway.
For more information, see *"3.2 Powering on the Technicolor Gateway"* on page 18.
- 3 Connect your computer to the Technicolor Gateway.
For more information, see *"3.3 Connecting Your Network Devices to the Technicolor Gateway"* on page 19.
- 4 Configure your Technicolor Gateway.
For more information, see *"3.4 Configure the Technicolor Gateway"* on page 22.
- 5 Share your content or media on your local network, continue with *"7 Sharing Content on your Technicolor Gateway"* on page 45.
- 6 If you purchased the mobile USB adapter, setup the 3G backup connection.
For more information, see *"3.5 Setting Up the 3G Fall-Back WAN Connection"* on page 23.
- 7 Once you successfully installed your Technicolor Gateway, it is recommend to backup your configuration. This will allows you to return to this configuration when needed (for example, after misconfiguration). For more information, see *"4.2 Backing Up/Restoring your Configuration"* on page 33.

3.1 Connecting the Technicolor Gateway to your Service Provider's Network

Introduction

This section helps you to connect the Technicolor Gateway to your service provider's network.

Signal arriving at your home

The **Line** signal that arrives at your home consists the following components:

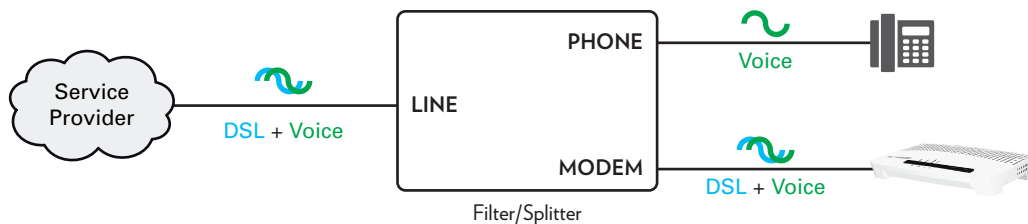
- A **Phone** signal carrying the traffic for telephony.
- A **DSL** signal carrying the Internet traffic.

DSL Gateways have a built-in solution to remove the **Phone** component. No additional devices are needed, you can connect them directly to the **Line**.

Telephones do not have this capability, so here you have to use a filter or splitter to remove the **DSL** signal.

How does a filter/splitter look like

A splitter/filter is a box that typically has the following connectors:



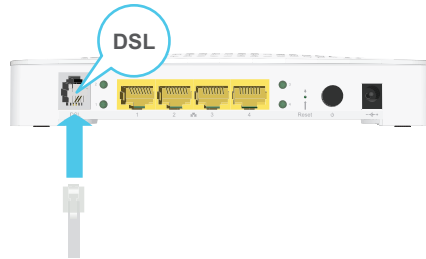
- A **Line** input
This connector must be connected to the input signal that needs to be filtered.
- A **Phone/PSTN** output
This connector offers filtered output signal. It only contains the **Voice** component and can only be used for connecting phones.
- A **Modem/DSL** output (optional)
This connector offers unfiltered output. It contains both the **Phone** and **DSL** signal and can be used to connect your Technicolor Gateway.

Connecting the cables

Proceed as follows:

- 1 Take the DSL cable. This is the grey cable that is included in your box.

- 2 Plug one end of the cable in the grey **DSL** port on the back of your Technicolor Gateway.



- 3 Plug the other end of the cable into the **DSL/MODEM** output port of your filter/splitter.

3.2 Powering on the Technicolor Gateway

Procedure

Proceed as follows:

- 1 Connect the power cord to the power port of the Technicolor Gateway.
- 2 Plug the other end of the power cord into an electrical outlet.
- 3 Press the power button to turn on the Technicolor Gateway.
- 4 Wait at least two minutes to allow the Technicolor Gateway to complete the start up phase.

3.3 Connecting Your Network Devices to the Technicolor Gateway

Choose your connection method

To connect your device via:

- A wireless connection, continue with “3.3.1 Setting up a Wireless Connection” on page 20.
- A wired connection, continue with “3.3.2 Setting up a Wired Connection” on page 21.

3.3.1 Setting up a Wireless Connection

The Technicolor Gateway access point

Your Technicolor Gateway is equipped with a wireless access point that supports the following standards:

- IEEE 802.11n (2.4 Ghz)
- IEEE 802.11g
- IEEE 802.11b

Requirements

Your network device must be equipped with a WiFi-certified wireless client.

Connection speed

When setting up your wireless network, keep in mind that the following factors may have a negative impact on your wireless connection speed:

- The obstacles (walls, ceilings,...) between the wireless client and the access point.
- Distance between the wireless client and the access point.
- To fully benefit from the improved connection speed offered by the IEEE 802.11n standard, it is recommended to only connect IEEE 802.11n wireless clients to your Technicolor Gateway. Connecting older (for example, IEEE 802.11g) wireless clients may also slow down connection speed of the IEEE 802.11n capable clients.

If you have problems with your wireless performance, see *“Poor Wireless Connectivity or Range”* on page 83.

To set up a wireless connections

For more information on how to setup a wireless connection between your network device and your Technicolor Gateway, see *“5 The Technicolor Gateway Wireless Access Point”* on page 35.

3.3.2 Setting up a Wired Connection

Requirements

- Both your network device (for example, a computer, a gaming console,...) and Technicolor Gateway must have a free Ethernet port.
- Your network device must be configured to obtain an IP address automatically. This is the default setting.

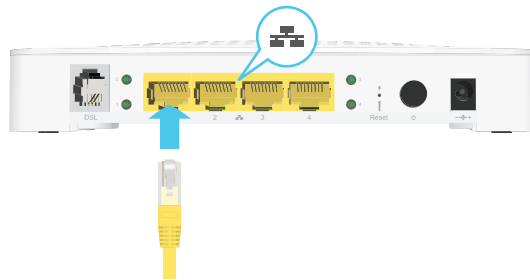
Ethernet cable

In your package, you will find a cable with yellow connectors. This is the Ethernet cable.

Procedure

Proceed as follows:

- 1 Connect one end of the Ethernet cable to one of the **yellow** Ethernet ports of your Technicolor Gateway:



- 2 Connect the other end of the Ethernet cable to your network device.



The Technicolor Gateway does not support Power over Ethernet (PoE). All network devices that are connected to the Technicolor Gateway must be powered by their own power source.

- 3 Your network device is now connected to your network. No additional configuration is needed unless specified by your service provider.

3.4 Configure the Technicolor Gateway

Introduction

If your service provider did not preconfigure your Technicolor Gateway, you may have to configure the Technicolor Gateway via its Graphical User Interface (GUI).

Requirements

JavaScript must be enabled on your web browser (this is the default setting). For more information, consult the help of your web browser.

Procedure

Proceed as follows:

- 1 Open your web browser.
- 2 The Technicolor Gateway informs you that you have not yet configured your Technicolor Gateway.

Welcome...

Congratulations on purchasing this Technicolor Gateway business gateway.
You are currently not connected to the Internet, click on the task below to continue.

 [Set up my Technicolor Gateway](#)

<http://www.google.com>

If this window does not appear, browse to <http://dsldevice.lan> or to the IP address of your Technicolor Gateway (by default: 192.168.1.254) and click **Technicolor Gateway** on the menu on the left-hand side.

- 3 Click **Setup my Technicolor Gateway**.
- 4 The **Easy Setup** wizard appears. This wizard will guide you through the configuration of your Technicolor Gateway. Click **Next** and follow the instructions.

3.5 Setting Up the 3G Fall-Back WAN Connection

Introduction

Many SOHO (Small Offices, Home Offices) and SME (Small/Medium Enterprises) businesses choose DSL as their access technology for a Wide Area Network (WAN) connection because this is typically cheaper than using leased lines. A dropout of a DSL line can however have expensive consequences due to inaccessibility of the Internet and E-mail. Therefore backup solutions are available that provide an alternative path when the DSL line is down.

For example it is possible to switch to 2G / 3G mobile access technologies such as GPRS, UMTS, HSDPA, HSUPA, HSPA+, WIMAX and LTE when internet connectivity is not available via the main WAN connection. By plugging a mobile USB adapter into one of the USB ports of your Technicolor Gateway, IP connectivity via a 2G / 3G network becomes possible.

3G is an umbrella-term to indicate the third generation mobile telephony technology. The services associated with 3G provide the ability to transfer both voice data and non-voice data. 3G networks are the successors of the 2G networks, such as the GSM networks and provide new services and higher data transfer speeds.

What do I need?

To start using 2G / 3G as a connection on the Technicolor Gateway, you need:

- A mobile USB adapter
- A registered Security Identity Module (SIM) card.

Configure 2G / 3G as WAN connection

Proceed as follows:

- 1 Configure your mobile connection.
For more information, see “3.5.1 Managing your Mobile Connection with the Technicolor Gateway GUI” on page 24.
- 2 Insert your mobile USB adapter.
For more information, see “3.5.2 Inserting a Mobile USB Adapter” on page 25.
- 3 Now your mobile connection is up and ready to use.



If you need to remove your mobile USB adapter, make sure the Technicolor Gateway is powered off first.

Result

Technicolor Gateway will automatically enable your 3G backup connection when **both** of the following conditions are met:

- The main Internet connection has been unavailable for at least 60 seconds.
- The Technicolor Gateway received a request to access the Internet (for example, when browsing to an Internet web site).

The Technicolor Gateway will automatically disable the 3G connection in **either** of the following cases:

- The main Internet connection is available again. In this case the Technicolor Gateway switches back to the main Internet connection.
- No Internet traffic has been detected during the last 10 seconds. For example, you finished surfing the Internet.

3.5.1 Managing your Mobile Connection with the Technicolor Gateway GUI

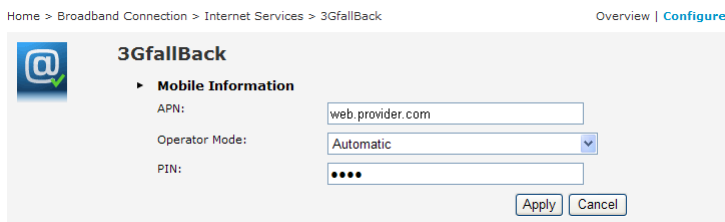
Introduction

You can view and manage the parameters of your mobile connection via the Technicolor Gateway GUI.

Procedure

To manage your mobile USB connection via the Technicolor Gateway GUI:

- 1 Browse to the Technicolor Gateway GUI.
- 2 On the **Broadband Connection** menu, click **Internet Services**.
- 3 Click **View more...** for the mobile USB connection. The **Overview** page of the mobile USB connection is shown.
- 4 In the location bar, click **Configure**. The **Configure** page of the mobile connection appears.



- 5 Under **Mobile Information**, update the following fields if necessary:
 - ▶ **APN:**
The public APN used to access the Internet, or the private APN to access a local network.
 - ▶ **Operator Mode:**
2G / 3G / automatic (let the Technicolor Gateway choose the best operator mode)
 - ▶ **Pin:**
The PIN code of your SIM card.
- 6 Click **Apply** to apply your configuration changes.



Configuration changes via the Technicolor Gateway GUI are automatically saved.

3.5.2 Inserting a Mobile USB Adapter

Procedure

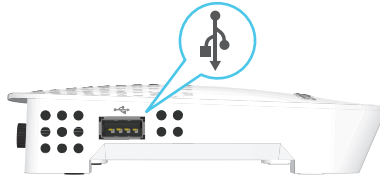
Once the mobile connection is configured you can proceed as follows to insert the mobile USB adapter:

- 1 Power off the Technicolor Gateway.



If you do not power off the Technicolor Gateway first, the mobile USB adapter will not be detected.

- 2 Insert your SIM card into the mobile USB adapter.
- 3 Plug the mobile USB adapter in (one of) the USB port(s) of your Technicolor Gateway:



- 4 Power on the Technicolor Gateway.

4 Configuration Tools

Configuration Tools

You can use the following tools to configure your Technicolor Gateway:

- The Technicolor Gateway Setup CD allows you to configure your Technicolor Gateway and helps you to connect your computers to the Technicolor Gateway. For more information, see “2 *Guided Installation*” on page 13.
- The **Technicolor Gateway GUI** allows you to configure your Technicolor Gateway via your web browser. For more information, see “4.1 *Technicolor Gateway GUI*” on page 28.

4.1 Technicolor Gateway GUI

Introduction

The Technicolor Gateway Graphical User Interface (GUI) allows you to configure your Technicolor Gateway using your web browser.

Requirements

JavaScript must be enabled on your browser (this is the default setting). For more information, consult the help of your web browser.

4.1.1 Access

Accessing the Technicolor Gateway GUI

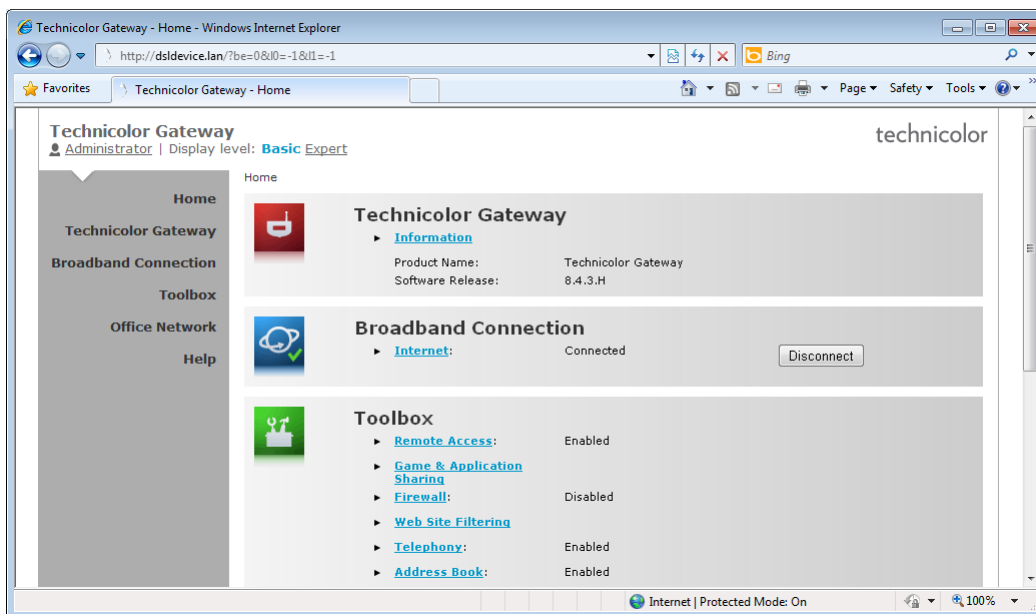
Proceed as follows:

- 1 Open your web browser.
- 2 Browse to <http://dsldevice.lan> or to the IP address of your Technicolor Gateway (by default: 192.168.1.254).
- 3 If you have protected your Technicolor Gateway with a user name and password, the Technicolor Gateway will prompt you to enter these. Enter your user name and password and click **OK**.



For more information, see “4.1.3 Protecting Access to the Technicolor Gateway” on page 32.

- 4 The *Technicolor Gateway GUI* appears.



Access the Technicolor Gateway via UPnP

You can also access the Technicolor Gateway GUI using the Internet Gateway Device (IGD) icon if your computer runs one of the following operating systems:

- Microsoft Windows 7
- Microsoft Windows Vista
- Microsoft Windows XP

For more information, see “8.1 UPnP” on page 60.

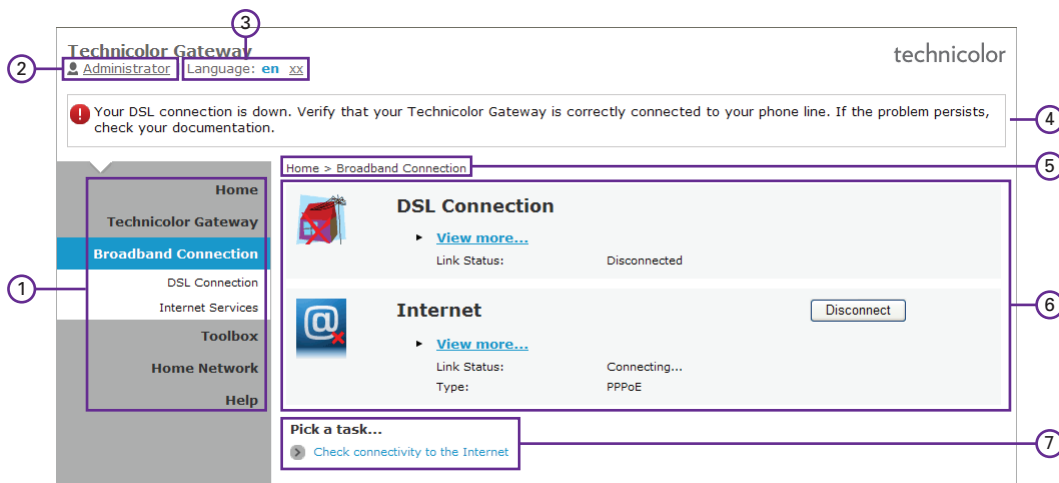
Remote access

It is also possible to access the Technicolor Gateway GUI from the Internet. For more information, see “4.3 Access From the Internet” on page 34.

4.1.2 Components

Overview

Depending on your user right and location on the GUI, the following components can be available:



Label	Description
1	Menu
2	Login section
3	Language bar
4	Notification area
5	Navigation bar
6	Content pane
7	Tasks pane

Menu

The menu consists of the following menu items:

- **Home:**
Allows you to go back to the Technicolor Gateway home page.
- **Technicolor Gateway:**
Provides basic information on the Technicolor Gateway.
- **Broadband Connection:**
Allows you to view/configure your broadband connections.
- **Toolbox:**
Allows you to configure the network services and security settings of your Technicolor Gateway.
- **Home Network:**
Allows you to manage your local network.
- **Help:**
Allows you to view context-related help information.

Each of these items contain a number of sub-menu items.

Login section

In the login section you can see the current user name.

By clicking the user name, you can:

- Change your password.
- Switch to another user.

Language bar

If more than one GUI language is available, a language bar is showed. This language bar allows you to change the language of the Technicolor Gateway GUI.

Notification area

The notification area displays:

- Error messages, indicated by a red traffic light.
- Warning messages, indicated by an orange traffic light.
- Information messages, indicated by a green traffic light.



If none of these events occur, the notification is not shown.

Navigation bar

The Navigation bar displays your current position in the *Technicolor Gateway GUI*.

Some page are available in different configuration levels. These pages have additional links (for example, **Overview**, **Configure**) in the right part of the navigation bar that allow you to switch between the configuration levels.

Content pane

The content pane displays the information and configurable items of the selected item.

Tasks pane

To allow a quick configuration of your Technicolor Gateway, some pages may offer you a number of related tasks in the **Pick a task** list. These tasks will guide you to the page where you can perform the selected task.

4.1.3 Protecting Access to the Technicolor Gateway

Introduction

To prevent that every user on your local network can access the Technicolor Gateway, the Technicolor Gateway is secured with a user name and password.

Default user name

The default user name is **Administrator**.

Default password

The default password is either blank or the **ACCESS KEY** printed on the label of your Technicolor Gateway. This depends on the settings chosen by your Service Provider.



It is recommended to change the default password settings.

Choose a password that you can easily remember or write it down. If you forget your password the only option is to reset your Technicolor Gateway. For more information, see “10.5 Reset to Factory Defaults” on page 84.

Protected items

The following items are protected by these is will secure access to:

- The Technicolor Gateway GUI.
- The embedded FTP Server.
for more information, see “7.3 The FTP Server” on page 54.

How to change your password

Proceed as follows:

- 1 On the **Toolbox** menu, click **User Management**.
- 2 In the **Pick a task** list, click **Change my password**.
- 3 Enter your new password and click **OK**.
- 4 Your new password is now active. The next time that you log on to the *Technicolor Gateway GUI* you will have to enter this password.



This password will also be used by the network file server and FTP server.

For more information about the network file server and FTP server, see “7 Sharing Content on your Technicolor Gateway” on page 45

4.2 Backing Up/Restoring your Configuration

Introduction

Once you have configured your Technicolor Gateway to your needs, it is recommended to backup your configuration for later use. This way you can always return to your working configuration in case of problems.

Backing up your configuration

Proceed as follows:

- 1 Browse to the Technicolor Gateway GUI.
For more information, see “4.1 Technicolor Gateway GUI” on page 28.
- 2 On the **Technicolor Gateway** menu, click **Configuration**.
- 3 In the **Pick a task** list, click **Save or Restore Configuration**.
- 4 Under **Backup current configuration**, click **Backup Configuration Now**.
- 5 The Technicolor Gateway prompts you to save your backup file.
- 6 Save your file to a location of your choice.



Do not edit the backup files, this may result in corrupt files making them worthless as configuration backup.

Restoring your configuration

Proceed as follows:

- 1 Browse to the Technicolor Gateway GUI.
For more information, see “4.1 Technicolor Gateway GUI” on page 28.
- 2 On the **Technicolor Gateway** menu, click **Configuration**.
- 3 In the **Pick a task** list, click **Save or Restore Configuration**.
- 4 Under **Restore saved configuration**, click **Browse** and open your backup file.



Backup files usually have **.ini** as extension.

- 5 The Technicolor Gateway restores your configuration.

4.3 Access From the Internet

Modes

To access your Technicolor Gateway from the Internet, you can choose between two modes:

- **Permanent Mode (Remote Access):**
The remote session ends when you disable remote assistance or after restarting your Technicolor Gateway.
- **Temporary Mode (Remote Assistance):**
The remote session ends when you disable remote assistance, after restarting your Technicolor Gateway or after 20 minutes of inactivity.

To enable Remote Assistance / Remote Access.




Enabling remote assistance is only possible when you are connected to the Internet.

To enable remote assistance/access:

- 1 Browse to the Technicolor Gateway GUI.
For more information, see “4.1 Technicolor Gateway GUI” on page 28.
- 2 Complete and check the following parameters:
 - ▶ **Mode:**
Select the mode that you want to use.
 - ▶ **URL:**
Contains the URL that must be used to access the Technicolor Gateway from the Internet.
 - ▶ **User name and Password:**
Contains the user name and password are needed to access your Technicolor Gateway remotely. If wanted you can change the automatically generated password in the **Password** box.
- 3 Click **Enable Remote Assistance**.

Accessing your Technicolor Gateway from the Internet

Proceed as follows:

- 1 Open your web browser.
- 2 Type the URL that was listed in the URL field on the **Remote Assistance** page (for example `https://141.11.249.150:51003`).
 - 
 You can replace the IP address in this URL by the dynamic DNS host name if you enabled and configured Dynamic DNS. For more information, see *Dynamic DNS*.
 Example: `https://141.11.249.150:51003` can be replaced by `https://mygateway.dyndns.org:51003`.
- 3 Enter the user name and password that you specified on the **Remote Assistance** page.
- 4 The *Technicolor Gateway GUI* appears.

It is now possible for a remote user to access your Technicolor Gateway via the specified URL using the provided user name and password.

5 The Technicolor Gateway Wireless Access Point

Introduction

This section will help you set up your wireless network.

What you need to set up a wireless network

To set up a wireless network, you need the following components:

- A *Wireless Access Point* (already integrated into your Technicolor Gateway)
- A *Wireless client* the device that you want to connect (for example, a computer, smartphone, network printer,...)

Wireless Access Point


The wireless access point is the heart of your wireless network. The wireless access point:

- Connects different wireless devices.
- Secures the data sent over wireless connection.

The Technicolor Gateway comes with an integrated wireless access point.

Wireless client

The wireless client allows you to connect a device, typically a computer, to a wireless access point. Both built-in and external (for example via USB) clients are available.

 Devices like media players and smartphones may also have a built-in wireless client. Check the documentation of your device for more information.

Check the documentation of your computer if you are not sure if your computer is equipped with a wireless client.

Configuring your wireless clients

For more information on how to establish a wireless connection to the Technicolor Gateway, see “5.1 Connecting Your Wireless Client via WPS” on page 36 and “5.2 Connecting Your Wireless Client without WPS” on page 38.

Secure your wireless connection!

When using an unsecured connection, everyone who is within the range of your Technicolor Gateway can access your network. If not:

- People may use your connection to access the Internet.
- Hackers may use your connection to commit computer crimes.


You can easily prevent this by securing your wireless access point. For more information, see “5.3 Securing Your Wireless Connection” on page 39.

5.1 Connecting Your Wireless Client via WPS

WPS

Wi-Fi Protected Setup (WPS) allows you to add new wireless clients to your local network in a swift and easy way, without the need to enter any of your wireless settings (network name, wireless key, encryption type).

Requirements

- Your wireless client must support WPS. Check the documentation of your wireless client for this.
-  Both Windows 7 and Windows Vista Service Pack 1 have native WPS support.
- Your Technicolor Gateway must use WPA(2)-PSK encryption (default encryption) or no encryption. WPS with WEP encryption is not possible.

Procedure

Proceed as follows:

- 1 Shortly press the WPS button on the **Technicolor Gateway**:



- 2 The WPS button LED starts blinking orange. This indicates that the **Technicolor Gateway** is now searching for wireless clients that are in registration mode. You now have two minutes to start WPS on your wireless client.
- 3 Start WPS on your wireless client.
- 4 The Technicolor Gateway is now exchanging the security settings.
- 5 At the end of the procedure the status of the WPS LED will change to either of the following:
 - ▶ Solid green
This indicates that you have successfully registered your wireless client. You are now connected to the Technicolor Gateway network.
 - ▶ Blinking red
This indicates that the Technicolor Gateway could not find your wireless client. Use the same procedure to try again (you do not need to wait until the LED turns off).

Troubleshooting

If you are having trouble connecting your wireless client via WPS, this may be caused by one of the following reasons:

- WPS can not be correctly executed:
Configure your wireless manually. For more information, see “5.2 Connecting Your Wireless Client without WPS” on page 38.

- Your wireless client is out of range:
If possible move your wireless client closer to your Technicolor Gateway or use a wireless repeater to extend the range of your wireless network.
- Another device is interfering on the selected wireless channel:
Change the wireless channel of your Technicolor Gateway. For more information, see *“Change the wireless channel”* on page 83.

5.2 Connecting Your Wireless Client without WPS

Before you start

Before you can connect a wireless client (for example, a computer) to your wireless network you need to know the wireless settings that are currently used by the Technicolor Gateway, i.e.:

- The Network Name (SSID)
- The wireless key

What Network Name (SSID) is my Technicolor Gateway using?

If you did not change the SSID, your Technicolor Gateway uses the Network Name that is printed on the bottom panel label of your Technicolor Gateway.

What wireless key is my Technicolor Gateway using?

If you did not change the security settings, no wireless key is used.



If your service provider did choose to use a default wireless key, use the **Wireless Key** that is printed on the bottom panel label of your Technicolor Gateway.

Forgot your wireless key?

If you have changed the wireless settings manually and you can't remember your settings, try one of the following:

- 1 Use a computer that is already connected to your network.



If none of your computers is connected yet, connect one with an Ethernet cable. For more information, see *"3.3.2 Setting up a Wired Connection" on page 21.*

- 2 Browse to the Technicolor Gateway GUI.
For more information, see *"Accessing the Technicolor Gateway GUI" on page 29.*
- 3 On the **Home Network** menu, click **Wireless**.
- 4 In the upper-right corner, click **Details**.
- 5 Under:
 - ▶ **Configuration**, you can find the network name (SSID).
 - ▶ **Security**, you can find the encryption.

Connecting your wireless client

Configure your wireless client with the same wireless settings as your Technicolor Gateway (network name and wireless key). For more information, consult the documentation of your wireless client.

5.3 Securing Your Wireless Connection

Introduction

You can protect the wireless communication between the wireless clients and your Technicolor Gateway with a wireless key. This means that:

- Only clients which use the correct Network Name (SSID) and wireless key can connect to your network.
- All data passing through your wireless access point is secured and encrypted.

Encryption types

Over the years a number of encryption types have been developed. The list below gives you an overview of the supported encryption types ordered by descending security level; you will find the highest level of security at the top of the list:

- **WPA-PSK Encryption:**

The wireless connection is secured with a pre-shared key that has been defined by the user. Wireless clients must be configured with this key before they can connect to the Technicolor Gateway. The Technicolor Gateway supports the following WPA versions (ordered by descending security):

- ▶ **WPA2:**

The most recent and most secure version of WPA. Choose this version if you are sure that all your wireless clients support WPA2.

- ▶ **WPA+WPA2:**

This is a mixed mode. In this mode WPA2, is the preferred encryption type but wireless clients do not support WPA2, can still use WPA as encryption type. Choose this option if not all of your wireless clients support WPA2 or if you are not sure. Wireless clients that support WPA2 will use WPA2, the others will use WPA.

- ▶ **WPA:**

The first version of **WPA**. Choose this option if you are sure that none of your wireless clients support WPA2.



If you want to configure WPA2 on the built-in wireless utility of Windows XP Service Pack 2 (SP2), you first have to:

- Upgrade your Windows XP to Service Pack 3.
- or -
- Install the following update: <http://support.microsoft.com/kb/917021>.

- **WEP Encryption:**

The least safe encryption type used for wireless connections. Like WPA-PSK it uses a user-defined key, but WEP has been proven to have security issues.



Although the Technicolor Gateway allows you to use WEP or no security, we strongly advise against using one of them! Use **WPA(2)-PSK** instead.

Configuration

Proceed as follows:

- 1 Open the *Technicolor Gateway GUI*.
- 2 Under **Home Network**, click **Wireless**.



- 3 The **Wireless Access Point** page appears. In the upper-right corner, click **Configure**.
- 4 Under **Encryption**, select **Use WPA-PSK Encryption**.
- 5 In the **WPA-PSK Encryption Key** box, type a the key of your choice. The key must be in one of the following formats:
 - ▶ 8 to 63 alphanumeric characters. For example: MyKey123
 - ▶ 8 to 64 hexadecimal characters (characters from 0 to 9 and from A to F). For example: C54F48A5.

- 6 In the **WPA-PSK Version** list, click the WPA-version of your choice. For more information, see *“Encryption types”* on page 39.
- 7 Click **Apply**.
- 8 Reconnect your wireless client(s) to the Technicolor Gateway using these new security settings. For more information, see *“5.1 Connecting Your Wireless Client via WPS”* on page 36 or *“5.2 Connecting Your Wireless Client without WPS”* on page 38.

6 Saving Energy with Your Technicolor Gateway

Code of Conduct

To prove its commitment to protect the environment, Technicolor has signed the Code of Conduct, a global agreement to reduce the power consumption of broadband access devices.

For more information, see “6.1 Code of Conduct” on page 42.

Technicolor power saving innovations

To further reduce the power consumption, Technicolor has developed the *ECO Manager*. This system constantly monitors the services provided by the Technicolor Gateway and automatically switches unused services to an ECO-friendly state. For more information, see “6.2 ECO Manager” on page 43.

Next to this automated tool, you can also choose to manually disable services that you will not be using. For more information, “6.3 Manually Switching Off Services to Reduce Power” on page 44.

6.1 Code of Conduct

Power states

Code of Conduct provides rules for the power consumption in:

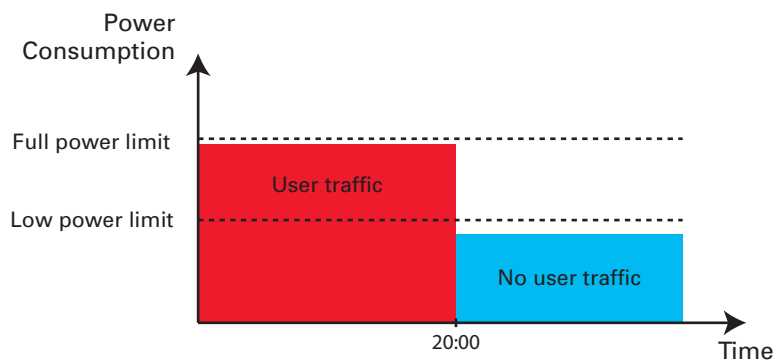
- Full power state:
This is the normal operation mode of the device, where all functionality is enabled.
- Low power state:
When there is no user traffic on the device, the device should switch to low power mode. This is a state in which devices are only allowed to use a limited amount of energy to be able to power its components and respond to user activity.

Example

Take the following example:

- The user switches off his computer at 20:00.
- There are no other devices connected to the Technicolor Gateway.

The Technicolor Gateway switches to low power mode. This results in a considerable drop in the overall power consumption of the Technicolor Gateway.



6.2 ECO Manager

Introduction

The Technicolor Gateway constantly monitors the user activity and uses this information to optimise the power consumption:

For example:

- The Technicolor Gateway **reduces the clock frequency of the central processor** when there is no or low user activity. This lowered clock frequency will result in a lower power consumption of the Technicolor Gateway.
- **Switch the wireless interface to power reduction mode.**

Wireless access point power reduction mode

When the Technicolor Gateway access point switches to power reduction mode, the access point is switched off and is only power on periodically to be able to detect new clients. If new clients are detected the wireless access point is fully powered again. This is only possible if there are no devices connected to the Technicolor Gateway.

Power reduction is disabled by default, but it is possible to enable it via the Technicolor Gateway GUI.



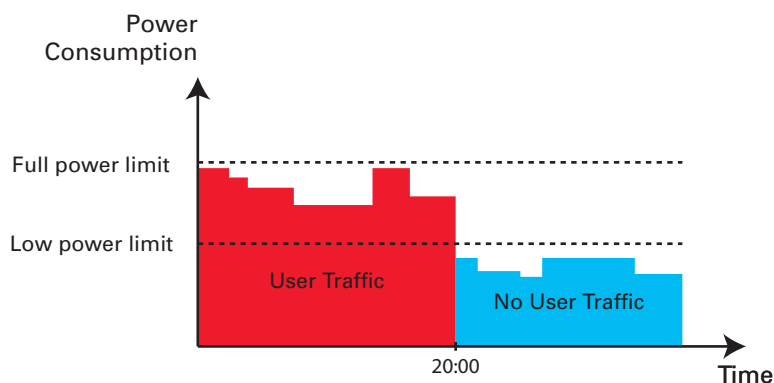
Enabling power reduction may have impact on the reliability of your wireless connection. This feature is intended for **advanced users only**.

To enable power reduction:

- 1 Browse to the Technicolor Gateway GUI.
For more information, see “*Accessing the Technicolor Gateway GUI*” on page 29.
- 2 Under **Home Network**, click **Wireless**.
- 3 In the *Navigation bar*, click **Configure**.
- 4 Under **Configuration**:
 - ▶ Select **Power Reduction Enabled** to enable power reduction.
 - ▶ Clear **Power Reduction Enabled** to disable power reduction.
- 5 Click **Apply**.

Example

If we use the same example as in the previous section, you can see that the Technicolor Gateway is now able to further reduce the power consumption in periods where less action is required from the Technicolor Gateway.



6.3 Manually Switching Off Services to Reduce Power

Wi-Fi button

If you are not using the wireless access point of your Technicolor Gateway, you might consider to disable the wireless access point permanently. This allows you to further reduce the power consumption.

To turn the wireless interface:

- **Off**, press the **Wi-Fi** button until its LED is off.
- **On**, press the **Wi-Fi** button until its LED is on.

Zero power consumption

If you will not be using your Technicolor Gateway for a longer time (for example: you are going on holiday), you should consider to turn off the Technicolor Gateway. This way no energy will be consumed at all.

However, be aware that if you turn off the Technicolor Gateway, **all services provided by the Technicolor Gateway that require access to the Internet will not be available**. For example:

- No Digital TV is provided
If your set-top box is connected to your Technicolor Gateway, it will no longer be able to connect to the Internet, hence not be able to service your TV set.

7 Sharing Content on your Technicolor Gateway

Introduction

The Technicolor Gateway allows you to share the content stored on your USB storage device with other users on your network or even access this shared content from the Internet.

Features

- The Technicolor Gateway supports USB 2.0
- The following file systems are supported:
 - ▶ NTFS (optional)
 - ▶ FAT32
 - ▶ FAT16
 - ▶ HFS+ (optional)
 - ▶ EXT2/EXT3 (optional)
- You can connect up to five USB storage devices (via a USB hub).
- Each USB storage device can have up to 10 partitions. If your device has more partitions the extra partitions will be ignored.

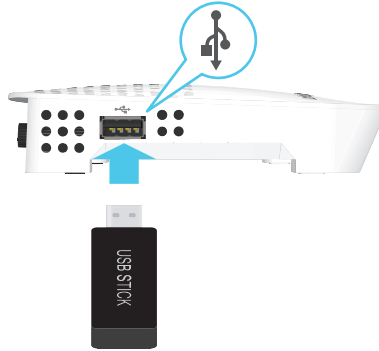
Content Sharing Servers

The Technicolor Gateway offers three types of services to share your content. The following table gives you a brief overview of the main functions:

	Network File Server	UPnP AV Media Server	FTP Server
Function	Store and access your data on your local network.	Make media files available for UPnP AV capable devices like Media players, Set-Top boxes from your local network.	Store and access your data from the Internet.
Access	Read and write	Read-only	Read and write
Accessible from	Local network	Local network	Internet and Local network
Type of content shared	All files from all partitions and disks that are connected.	Media files (music, movies and pictures) from all partitions and disks that are connected.	All files that are stored in the Shared folder of the managed partition.
For more information, see...	<i>"7.1 The Network File Server" on page 47</i>	<i>"7.2 The UPnP AV Media Server" on page 50</i>	<i>"7.3 The FTP Server" on page 54</i>

Configuration

All servers are **enabled by default**. The only thing that you need to do is to plug your USB memory stick or external hard disk in (one of) the USB port(s) of your Technicolor Gateway.



By using a USB hub, you can connect up to five USB mass storage devices to the Technicolor Gateway.



Do not remove your USB storage device without stopping it first, otherwise data might be lost! For more information, see “7.5 Safely Removing your USB Storage Device” on page 58.

7.1 The Network File Server

Introduction

The Network Server allows you to share the content on your USB storage device(s) with other devices that are connected to your local network (mostly computers).

These devices have **read and write access** to this USB device(s).

Configuration

The Network File Server is **enabled by default** and ready for use.

To change the default settings, proceed as follows:

- 1 Browse to the Technicolor Gateway GUI.
For more information, see *“Accessing the Technicolor Gateway GUI” on page 29.*
- 2 On the **Tools** menu, click **Content Sharing**.
- 3 In the *Navigation bar*, click **Configure**.
- 4 Under **Network File Server (Windows Networking)**, you can change the following settings:
 - ▶ **Server Name:**
Enter the name that you want to use to access the Technicolor Gateway.
 - ▶ **Server Description:**
Add a short description for what kind of data is stored on the USB storage device.
 - ▶ **Workgroup:**
Enter the same workgroup as used by your computer(s).
 - ▶ **Server Enabled:**
Select this option to enable the Network File Server
- 5 Click **Apply**.
- 6 All users connected to the Technicolor Gateway can now access the data on stored your USB storage device.
- 7 If you want to limit the number of folders that can be accessed, continue with *“7.4 Managing your Shared Content” on page 56.*

Accessing the shared content on Windows

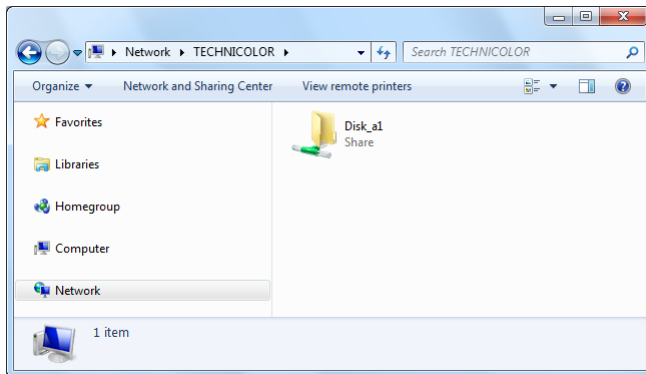
Proceed as follows:

- 1 Open **Windows Explorer**.
- 2 In the address bar, type two backslashes followed by the name that you entered in the **Server Name** box (default: **\\Technicolor**).



If you did not provide a server name, type **\\192.168.1.253**.

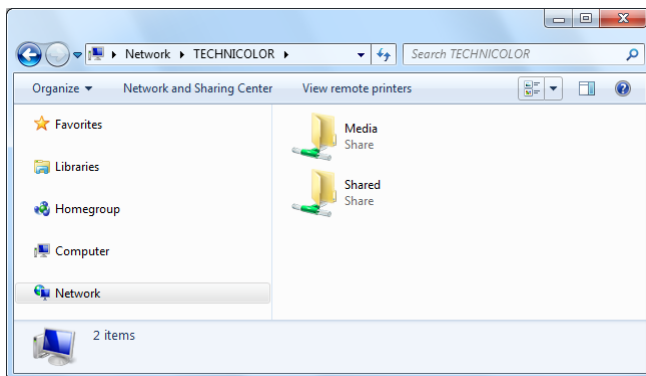
- 3 An Explorer windows appears. The storage devices that are attached to your Technicolor Gateway are listed as folders.



If the storage device has multiple partitions an index number will be added at the end (for example: **Disk_a1** and **Disk_a2**).

If multiple storage devices are inserted the first one is listed as **Disk_a1**, the second one as **Disk_b1**, and so on.

If the partition is a managed partition, only the **Media** and **Shared** folders of the managed partition are displayed:



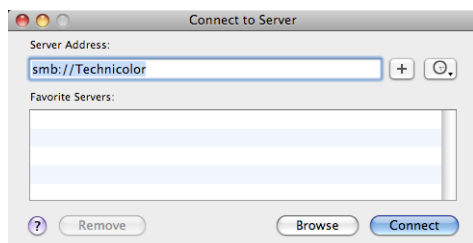
For more information on managed partitions, see “7.4 Managing your Shared Content” on page 56.

- 4 If you plan to frequently use this folder, it might be useful to map this folder as a network drive. For more information, see the help of your operating system.

Accessing the shared content on Mac

Proceed as follows:

- 1 On the **Go** menu, click **Connect To Server**.
- 2 The **Connect To Server** window appears.

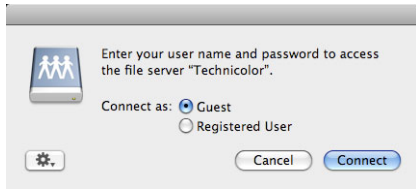


In the **Server Address** box, type **smb://<server name>**, where <server name> is the Server Name you assigned to your USB storage device (default: **smb://Technicolor**).



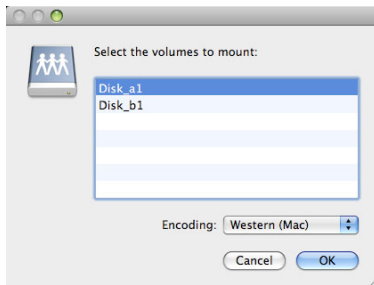
If you did not provide a server name, type **smb://192.168.1.253**.

3 The following window appears:



Select **Guest** and click **Connect**.

4 If prompted, select the partition that you want to open and click **OK**:



5 Your USB storage device is now mounted and is displayed on your desktop.

7.2 The UPnP AV Media Server

Introduction

Your Technicolor Gateway has a built-in DLNA-certified UPnP AV media server. This section describes how to use and configure this media server.

UPnP AV

UPnP AV (AV stands for Audio and Video) is a protocol especially designed to share *media* files on your *local network*.

DLNA-certified

The Digital Living Network Alliance (DLNA) is an organisation that imposes requirements to ensure the interoperability of your media devices and standardize the communication between them.

Buying a DLNA-certified device like the Technicolor Gateway guarantees you that it will seamlessly integrate with your other DLNA-certified devices.

To allow you to access your media in a quick and easy way, the Technicolor Gateway scans your storage device for meta data information (for example, title, artist, album) and stores it in a database. When you are looking for a file, the Technicolor Gateway can simply query the database instead of having to go through all the files.



This database will only be created if the following conditions are met:

- Your disk or partition must have at least 250MB of free space
- Your disk or partition must not be read-only.

UPnP AV network components

A UPnP AV network consists of the following components:

- The **UPnP AV server** is directly connected to your media files and makes them available on the network. In your network the Technicolor Gateway will fulfil this role.
- The **UPnP AV client** is a software application or hardware device that allows you to play or view the media files provided by your UPnP AV media server.

7.2.1 Configuring the UPnP AV Media Server

Introduction

The Network File Server is *enabled by default* and ready to use.

Enabling/disabling the UPnP AV Media Server

Proceed as follows:

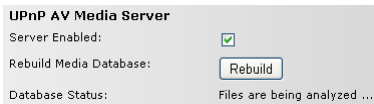
- 1 Browse to the Technicolor Gateway GUI.
For more information, see *“Accessing the Technicolor Gateway GUI”* on page 29.
- 2 On the **Tools** menu, click **Content Sharing**.
- 3 In the *Navigation bar*, click **Configure**.
- 4 Under **UPnP AV Media Server**, click **Server Enabled**.
- 5 Click **Apply**.

Media Database

When you plug in your USB storage device, the Technicolor Gateway will automatically start building the *media database*. This database contains all meta data of the media files stored on your USB storage device.

To view the status of the media database:

- 1 Browse to the Technicolor Gateway GUI.
For more information, see *“Accessing the Technicolor Gateway GUI”* on page 29.
- 2 On the **Tools** menu, click **Content Sharing**.
- 3 In the *Navigation bar*, click **Configure**.
- 4 Under **UPnP AV Media Server**, you can find the **Database Status**.



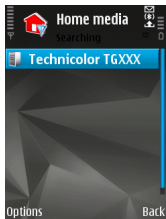
- 5 If you want to rebuild the database, click **Rebuild**.

7.2.2 Using the UPnP AV Media Server

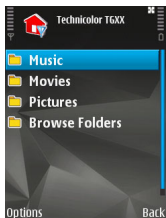
Introduction

The UPnP AV Media Server lists all audio, video and picture files located on the connected USB storage device. All UPnP AV renderers (for example, a DLNA-certified Set-Top box) that are connected to your network are able to view this list and play or view items from this list.

On your UPnP AV renderer, the Technicolor Gateway's UPnP AV media server will be listed as **Technicolor TGXXX**. Below you can find a screenshot taken on a smartphone with a UPnP AV client.



Via this entry, you can browse to your media files.



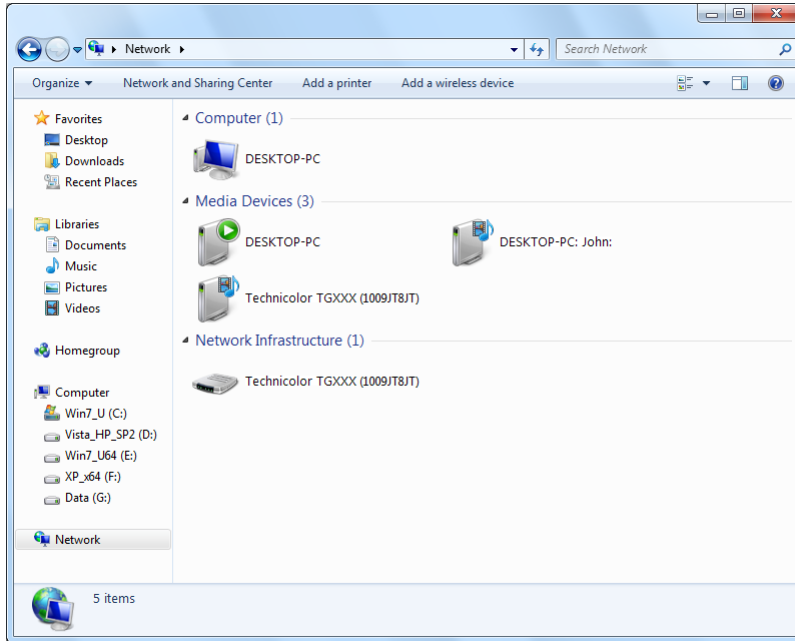
Windows 7

Windows 7 has native support for UPnP AV. It automatically detects UPnP AV and makes your media files available for playback on your Windows Media Player.

Proceed as follows:

- 1 On the Windows **Start** menu, click **Network**.

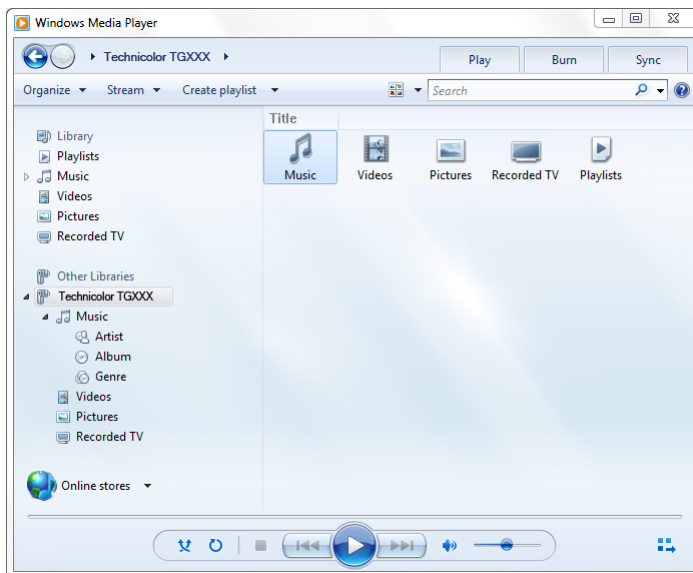
2 The **Network** window appears:



Under **Media Devices** you will find the Technicolor Gateway's UPnP AV Media Server (displayed as **Technicolor TGXXX**).

3 Double-click the Technicolor Gateway's UPnP AV Media Server to access your media files.

4 **Windows Media Player** starts up.



Your Technicolor Gateway's UPnP AV Media Server is listed on the left. This entry allows you to browse to your media files.

7.3 The FTP Server

Introduction

The Technicolor Gateway allows you to access your shared content by FTP. This can be useful if you want to be able to access your shared content from the Internet.

Via FTP you can **download and upload** all types of files both from your **local network and the Internet**.

Setting up the FTP server

Proceed as follows:

- 1 *Protect your account with a password.*
- 2 *Enable the FTP Server and select the managed partition.*

Protect your account with a password

If you did not yet configure your login to the *Technicolor Gateway GUI* with a password:

- 1 Browse to the Technicolor Gateway GUI.
For more information, see “*Accessing the Technicolor Gateway GUI*” on page 29.
- 2 On the **Toolbox** menu, click **User Management**.
- 3 In the **Pick a task** list, click **Change my password**.
- 4 Leave the **Old Password** box empty.
- 5 Type your new password both in the **New Password** box and **Confirm New Password** box.

Enable the FTP Server and select the managed partition

Proceed as follows:


- 1 Browse to the Technicolor Gateway GUI.
For more information, see “*Accessing the Technicolor Gateway GUI*” on page 29.
- 2 On the **Tools** menu, click **Content Sharing**.
- 3 In the *Navigation bar*, click **Configure**.
- 4 Under **FTP Server**, click **Server Enabled**.
- 5 Under **List of connected disks**, click the radio button next to the partition to make it managed.
- 6 The Technicolor Gateway now creates a **Media** and **Shared** folder on the selected partition. The **Shared** folder will be used as root location for FTP sessions.
- 7 Click **Apply**.

Result

The **Shared** folder and its subfolders are now accessible using FTP. The other folders are not accessible via FTP.

If you are connected to the Internet, the link to the FTP server is displayed under FTP Server:

Home > Toolbox > Content Sharing [Overview](#) | [Configure](#)



Content Sharing

This page summarizes the configuration for sharing the content on a USB disk connected to the gateway. You can share your files, music, pictures and movies towards your home network and towards the Internet.

! Before you can safely unplug a USB storage device, you must **stop** it.

- ▶ **Network File Server (Windows Networking)**
 - Server Name: Technicolor
 - Server Description: DSL Gateway
 - Workgroup: WORKGROUP
 - Server Enabled: Yes
- ▶ **UPnP AV Media Server**
 - Server Enabled: Yes
 - Profiler Status: Files are being analyzed ...
 - Database Status: Database construction in progress ...
- ▶ **FTP Server**
 - Server Address: <ftp://Administrator@172.18.17.79>
 - Server Enabled: Yes
- ▶ **List of connected disks**

		Managed partition
U3 Cruzer Micro (Disk 1)		
Partition 1	7.64 GB	4.05 GB free

A managed partition has not been selected.

On the Technicolor Gateway network, you can also access the FTP server using its local address (192.168.1.253).

Additional configuration

Because most service providers use dynamic IP addresses, the IP address of your Internet connection may change frequently. This implies that the link to the FTP server will also change every time the public IP changes. With *Dynamic DNS*, you can assign a host name to the IP address (for example mygateway.dyndns.org). For more information, see “8.3 *Dynamic DNS*” on page 69.

7.4 Managing your Shared Content

Managed Partition

When your USB storage device is permanently connected to the Technicolor Gateway, you may want to If you select your drive or partition as managed partition, users only have access to the following folders:

- **Media**
- **Shared**

All other folders will be hidden from the user. These hidden folders are still on the USB storage device, but you can not access them. If you connected more than one USB storage device, those devices will also be hidden.

Media folder

Use the **Media** folder to share your audio, video and picture files. This folder can only be accessed via the following servers:

- The Network File Server
For more information, see “7.1 The Network File Server”.
- UPnP AV Media Server.
For more information, see “7.2 The UPnP AV Media Server”.



If your partition is managed, the UPnP AV server will only use the media files that are located in the **Media** folder.

Shared folder

The **Shared** folder is a folder to share files both on the *local network and the Internet*. This folder can only be accessed via the following server:

- The Network File Server
For more information, see “7.1 The Network File Server”.
- FTP Server
For more information, see “7.3 The FTP Server”.



The FTP Server can only be used with a managed partition.

Unmanaged vs. managed

The following table compares the two modes:

Access via	Accessible folders	
	Unmanaged	Managed
Network File Server	All	Media and Shared folder.
UPnP AV Media Server	All	Media folder.
FTP Server	Not available in this mode.	Shared folder.

Setting up the managed partition

Proceed as follows:

- 1 Browse to the *Technicolor Gateway GUI*.
- 2 On the **Tools** menu, click **Content Sharing**.
- 3 In the *Navigation bar*, click **Configure**.

- 4 Under **List of connected disks**, click the radio button next to the partition you want to configure as *Managed Partition*.
- 5 Click **Apply**.

Result

The Technicolor Gateway creates following folders:

- **Media:**

Use this folder to share your media files with others users on your network. You can store your media files in following subfolders:

- ▶ **Movies**
- ▶ **Music**
- ▶ **Pictures**

- **Shared:**

Use this folder to share your other data with other users on your network. Optionally, users can also access this folder using FTP. For more information, see “7.3 The FTP Server” on page 54.

If the above folders already exist, the existing folders are used.

7.5 Safely Removing your USB Storage Device

Introduction

If you just unplug your USB storage device from the Technicolor Gateway you may lose your data. To avoid this you must first stop your USB storage device.

Stopping your USB storage device

Proceed as follows

- 1 Browse to the *Technicolor Gateway GUI*.
- 2 On the **Toolbox** menu, click **Content Sharing**.
- 3 In the *Navigation bar*, click **Configure**.
- 4 Click **Stop**.
- 5 Unplug your USB storage device from the Technicolor Gateway.

8 Technicolor Gateway Network Services

In this chapter

In this chapter we will take a closer look at following features:

Topic	Page
<i>8.1 UPnP</i>	60
<i>8.2 Assigning a service (HTTP, FTP,...) to a Computer</i>	67
<i>8.3 Dynamic DNS</i>	69

Feature availability

Depending on the configuration offered by your service provider, some features may not be available on your Technicolor Gateway. For more information, contact your service provider.

8.1 UPnP

Introduction

UPnP is designed to automate the installation and configuration of a (small) network as much as possible. This means that UPnP-capable devices can join and leave a network without any effort of a network administrator.

Supported Operating Systems

The following operating systems support UPnP:

- Windows 7
- Windows Vista
- Windows XP



If your computer is running Windows XP, you first have to install the UPnP component. For more information, see “8.1.4 Installing UPnP on Windows XP” on page 65.

UPnP and the Technicolor Gateway

UPnP offers you the following functions:

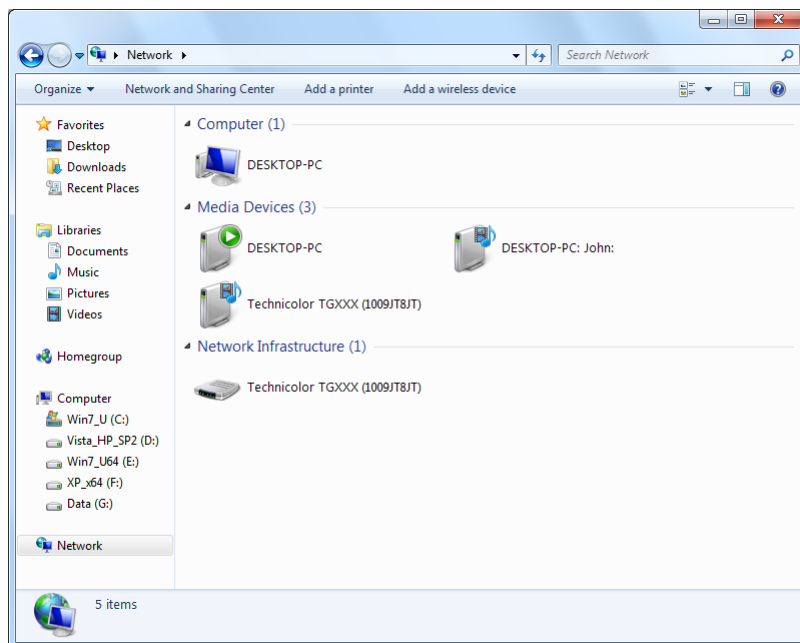
- You can access the *Technicolor Gateway GUI* without having to remember the address of the Technicolor Gateway. For more information, see “8.1.1 Accessing Your Technicolor Gateway via UPnP” on page 61.
- If you are using a PPP connection to connect to the Internet, you can enable/disable your Internet connection without having to open the *Technicolor Gateway GUI*.
For more information, see “8.1.2 Managing your Internet connection via UPnP” on page 62.
- You do not have to manually create port mappings to run services on a computer. The automatic port configuration mechanism for UPnP-enabled games and applications will do this for you. If the application is UPnP-enabled, UPnP will create these entries automatically. For more information, see “8.2 Assigning a service (HTTP, FTP,...) to a Computer” on page 67.

8.1.1 Accessing Your Technicolor Gateway via UPnP

Windows 7/Vista

If your computer runs Windows 7/Vista:

- 1 On the Windows **Start** menu, click **Network**.
- 2 The **Network** window appears:

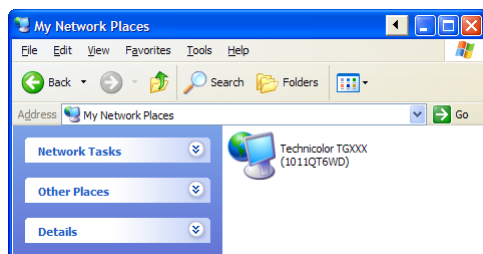


- 3 Right-click your Technicolor Gateway (displayed as Technicolor TGXXX) and click **View device web page**.
- 4 The *Technicolor Gateway GUI* appears.

Windows XP

If your computer runs Windows XP:

- 1 Go to **My Network Places**.
- 2 The **My Network Places** window appears:



- 3 Double-click your Technicolor Gateway (displayed as Technicolor TGXXX).
- 4 The *Technicolor Gateway GUI* appears.

8.1.2 Managing your Internet connection via UPnP

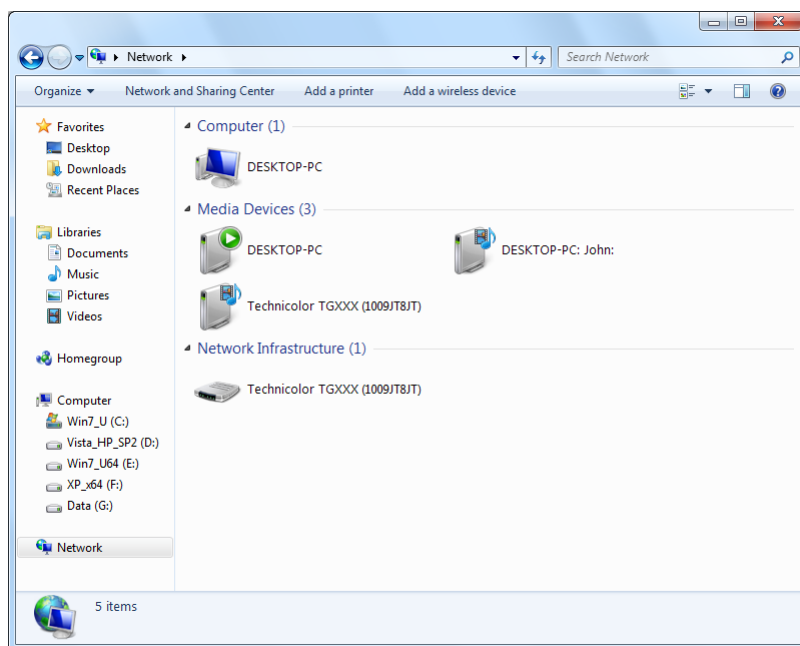
Applicability

This section only applicable if you are using a PPP connection to the Internet.

Windows 7/Vista

If your computer runs Windows 7/Vista:

- 1 On the Windows **Start** menu, click **Network**.
- 2 The **Network** window appears:



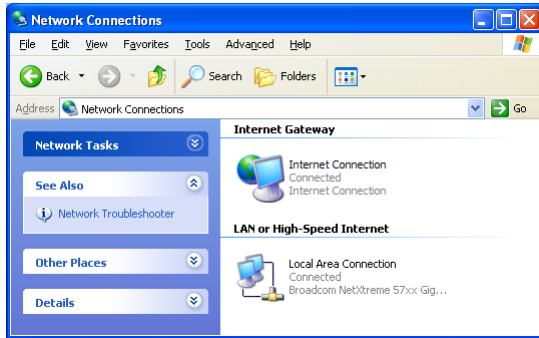
- 3 Right-click your Technicolor Gateway (displayed as Technicolor TGXXX).
- 4 If you are currently:
 - ▶ Connected to the Internet, click **Disable** to disconnect from the Internet.
 - ▶ Not connected to the Internet, click **Enable** to connect to the Internet.

Windows XP

Proceed as follows:

- 1 On the Windows **Start** menu, click (**Settings >**) **Control Panel**.
- 2 The **Control Panel** window appears.
Click (**Network and Internet Connections**) > **Internet Connections**.

3 The **Network Connections** window appears;



4 If you right-click the **Internet Connection** icon, you can connect/disconnect your connection to the Internet.

Disabling this feature

To prevent that users can connect/disconnect you can enable **Extended Security**. This feature is enabled by default. For more information, see *“8.1.3 Configuring UPnP on the Technicolor Gateway” on page 64.*

8.1.3 Configuring UPnP on the Technicolor Gateway

Introduction

On the *Technicolor Gateway GUI* you can:

- Enable/Disable *UPnP*.
- Enable/Disable *Extended Security*.

Enable/Disable UPnP

Proceed as follows:

- 1 Browse to the Technicolor Gateway GUI.
For more information, see “*Accessing the Technicolor Gateway GUI*” on page 29.
- 2 On the **Toolbox** menu, click **Game & Application Sharing**.
- 3 Under **Universal Plug and Play**:
 - ▶ Select the **Use UPnP** check box, to enable UPnP.
 - ▶ Clear the **Use UPnP** check box, to disable UPnP.
- 4 Click **Apply**.

Extended Security

If Extended Security is enabled, only limited UPnP operation between the host and the Technicolor Gateway is allowed:

- A local host is not allowed to connect/disconnect the Technicolor Gateway Internet connection. You can then only connect/disconnect the Internet connection via the *Technicolor Gateway GUI*
- Address translation mappings can only be added or changed via UPnP for the host on which the UPnP application is running.

Enable/Disable Extended Security

Proceed as follows:

- 1 Browse to the Technicolor Gateway GUI.
For more information, see “*Accessing the Technicolor Gateway GUI*” on page 29.
- 2 On the **Toolbox** menu, click **Game & Application Sharing**.
- 3 Under **Universal Plug and Play**, select **Use Extended Security**.
- 4 Click **Apply**.

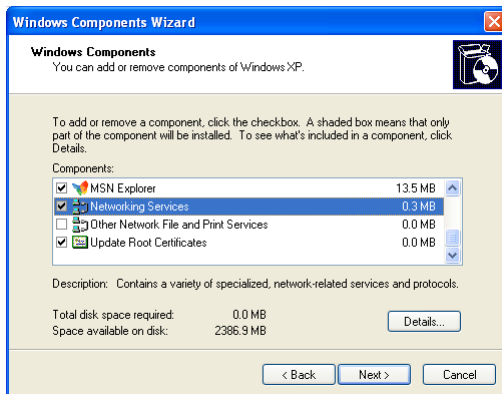
8.1.4 Installing UPnP on Windows XP

Adding UPnP

If you are running Microsoft Windows XP, it is recommended to add the UPnP component to your system.

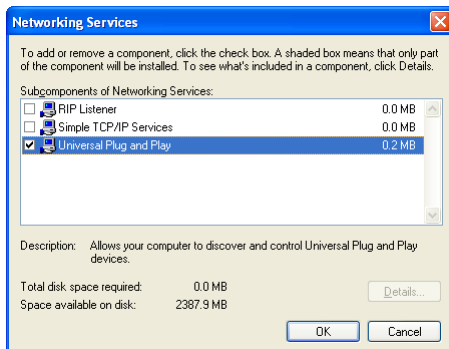
Proceed as follows:

- 1 In the **Start** menu, click **(Settings >) Control Panel**.
- 2 The **Control Panel** window appears.
Click **Add or Remove Programs**.
- 3 The **Add or Remove Programs** window appears.
Click **Add/Remove Windows Components**.
- 4 The **Windows Components Wizard** appears:



In the **Components** list, select **Networking Services** and click **Details**

- 5 The **Networking Services** window appears:



Select **Universal Plug and Play** or **UPnP User Interface** and click **OK**.

- 6 Click **Next** to start the installation and follow the instructions in the **Windows Components Wizard**.
- 7 At the end of the procedure the wizard informs you that the installation was successful. Click **Finish** to quit.

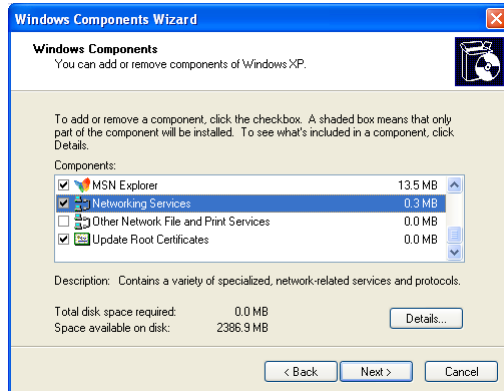
Adding IGD Discovery and Control

Your Windows XP system is able to discover and control Internet Gateway Devices (IGD), like the Technicolor Gateway on your local network. Therefore, it is recommended to add the IGD Discovery and Control client to your system.

Proceed as follows:

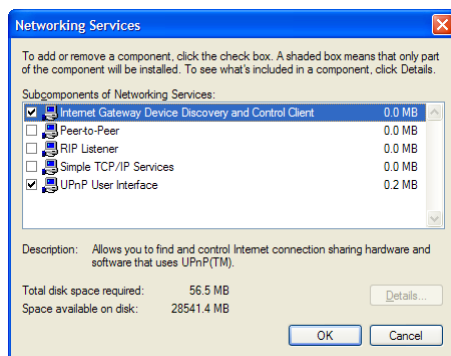
- 1 On the Windows taskbar, click **Start**.

- 2 Select **(Settings >) Control Panel > Add or Remove Programs**.
- 3 In the **Add or Remove Programs** window, click **Add/Remove Windows Components**.
- 4 The **Windows Components Wizard** appears:



Select **Networking Services** in the **Components** list and click **Details**.

- 5 The **Networking Services** window appears:



Select **Internet Gateway Device Discovery and Control Client** and click **OK**.

- 6 Click **Next** to start the installation and follow the instructions in the **Windows Components Wizard**.
- 7 At the end of the procedure, the wizard informs you that the installation was successful. Click **Finish** to quit.

8.2 Assigning a service (HTTP, FTP,...) to a Computer

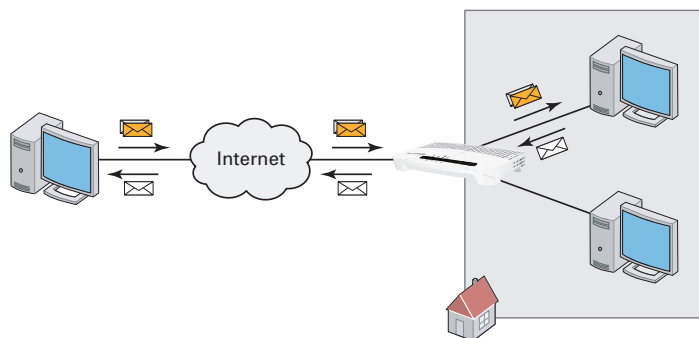
Introduction

The Technicolor Gateway allows you to use one Internet connection for multiple computers. This means that all your computers share one public IP address, as if only one computer were connected to the outside world.

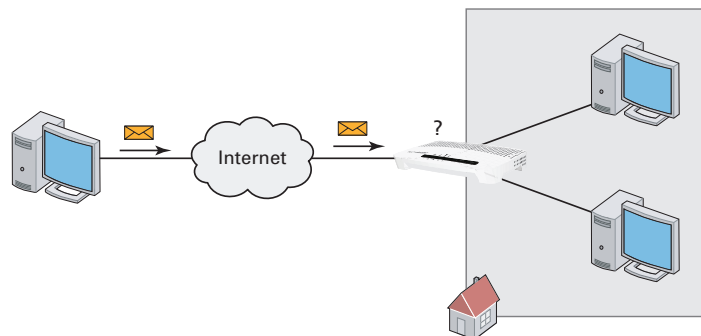
Issue

When the Technicolor Gateway receives an incoming message, the Technicolor Gateway has to decide to which computer it has to send this message.

If the incoming message is a response to an outgoing message originating from one of your computers, the Technicolor Gateway sends the incoming message to this computer.



If you are running a server or an application that acts as a server (for example a HTTP server, Internet game), the initial message will come from the Internet and the Technicolor Gateway has no information to decide to which computer it should forward the incoming message.



Solution

To avoid this problem you can do either of the following:

- Enable *UPnP*.
- *Assign a game or application to a local networking device.*

UPnP

UPnP is a technology that enables seamless operation of a wide range of games and messaging applications. Your computer will use UPnP to communicate to the Technicolor Gateway which services are running on the computer.


For example, when you start a UPnP-enabled application on your computer, it will automatically create the necessary port mappings on this computer and on the Technicolor Gateway.

For more information on UPnP, see “8.1 UPnP” on page 60.

Assign a game or application to a local networking device

If you assign a game or application to a local networking device, you will basically tell the Technicolor Gateway that if it receives requests for a specific game or application, it has to forward these messages to a specific computer.

Proceed as follows to do so:

- 1 Browse to the Technicolor Gateway GUI.
For more information, see *“Accessing the Technicolor Gateway GUI” on page 29.*
- 2 On the **Toolbox** menu, click **Game & Application Sharing**.
- 3 In the **Pick a task** list, click **Assign a game or application to a local network device**.
- 4 In the **Game or application** list, click the service you want to run on the computer. For example, **HTTP Server (World Wide Web)**.
 If the service is not available in the list, click **Create a new game or application** in the **Pick a task** list. For more information, click **Help** on the *Technicolor Gateway GUI*.
- 5 In the **Device** list, select the computer to which you want to assign the service. Your computer will be listed with its computer name.
- 6 All incoming requests for the selected service will now be directed to the selected device. The Technicolor Gateway will also configure its firewall to allow this service.

8.3 Dynamic DNS

Introduction

The Dynamic DNS service allows you to assign a dynamic DNS host name (for example mywebpage.dyndns.org) to a broadband connection even if it is using a dynamic IP address. As soon as the device gets a new IP address, the dynamic DNS server updates its entry to the new IP address.

What you need

Before you can configure Dynamic DNS, you first have to create an account at a Dynamic DNS service provider. For example:

- www.dyndns.org
- www.no-ip.com
- www.dtdns.com

Procedure

Proceed as follows:

- 1 Browse to the Technicolor Gateway GUI.
For more information, see *“Accessing the Technicolor Gateway GUI” on page 29.*
- 2 On the **Toolbox** menu, click **Dynamic DNS**.
- 3 On the *Navigation bar*, click **Configure**.
- 4 Select the **Enabled** check box.
- 5 If necessary, select the broadband connection to which you want to assign the Dynamic DNS host name in the Interface list.
- 6 Type the user name and password of your Dynamic DNS service account in the corresponding fields.
- 7 In the **Service** list, click the name of your Dynamic DNS service provider.
- 8 In the **Host** box, type the host name that you got from the Dynamic DNS service provider (for example mywebpage.dyndns.org).
- 9 Click **Apply**.

9 Internet Security

Overview

The Technicolor Gateway offers various options to secure your network and network connection:

Topic	Page
<i>9.1 Parental Control</i>	72
<i>9.2 Firewall</i>	77

9.1 Parental Control

Introduction

The Technicolor Gateway allows you to deny access to specific web sites.

Access Denied page

When a user tries to access a page that is being blocked, the following page is displayed:

Access Denied...

Access to the requested website has been blocked because of the following reason:

You are not allowed to view this website.

<http://www.evill.com/>

For more information or if you believe the website has been incorrectly blocked, please contact your Technicolor Gateway administrator.

Address-based filtering

With address-based filtering (or URL-filtering) you can **block web sites based on their address** (for example www.porn.com).

Content-based filtering

As you know, the Internet consists of a large number of web sites, and that number still increases every day. This makes it almost impossible to keep the list of addresses up-to-date.

To solve this problem Technicolor Gateway introduced content-based filtering.

With content-based filtering you can **block web sites based on their content category** (for example pornography) instead of their URL. This way, you only need to select the appropriate categories and the content category server takes care of the rest. This content category server is updated at regular intervals.

Combining the two filters

Address-based filtering has priority over content-based filtering. This means that when you are blocking a specific category, you can still access a specific address provided you create a rule to allow access to that URL.

For example, if you are blocking content from the **Finance / Investment** category, you can create a rule to make an exception for netbanking.mybank.com.

Activating content-based filtering

Before you can use content-based filtering you must first activate it by purchasing a license key at your service provider or by activating the 30-day trial.

Proceed as follows:

- 1 Browse to the *Technicolor Gateway GUI*.
- 2 On the **Toolbox** menu, click **Parental Control**.
- 3 In the **Pick a task** list, click **Activate Web Filtering License**.
- 4 The **Web Filtering Activation** page appears. Under **License Type**, select:
 - ▶ **30-days evaluation** if you first want evaluate this feature.
 - ▶ **Standard** if you have already purchased a license key. The License key box appears as soon as you select this option. Type the license key that you received from your service provider in this box.
- 5 Click **Apply**.

Option 1: content-based filter (combined with the address-based filter)

If you want to use the content-based filtering:

- 1 Browse to the *Technicolor Gateway GUI*.
- 2 On the **Toolbox** menu, click **Parental Control**.
- 3 On the *Navigation bar*, click **Configure**.
- 4 Make sure that the **Use Content-Based Filter** check box is selected.
- 5 Configure the content-based filter. For more information, see “9.1.1 Configuring Content-based Filtering” on page 74.
- 6 If you want to make exceptions for specific web sites, add the necessary rules in the address-based filter. For more information, see “9.1.2 Adding Rules for Address-Based Filtering” on page 75.

Option 2: address-based filter only

Take this option if content filtering is not available on your Technicolor Gateway or you don't want to use it.

To configure address-based filtering:

- 1 Browse to the *Technicolor Gateway GUI*.
- 2 On the **Toolbox** menu, click **Parental Control**.
- 3 On the *Navigation bar*, click **Configure**.
- 4 Make sure that the **Use Address-Based Filter** check box is selected.
- 5 In the **Action for Unknown Sites**, select:
 - ▶ **Allow** as the default rule if you want to allow access to *all* web sites and manually specify which web sites may not be accessed.
 - ▶ **Block** as the default rule if you want to deny access to *all* web sites and manually specify a number of web sites that may be accessed.
- 6 Click **Apply**.
- 7 If you want to make exceptions for specific web sites, add the necessary rules in the address-based filter.
For more information, see “9.1.2 Adding Rules for Address-Based Filtering” on page 75.

9.1.1 Configuring Content-based Filtering

Requirements

Content-based filtering must be activated on your Technicolor Gateway.

For more information, see “*Activating content-based filtering*” on page 72.

Accessing the configuration page

Proceed as follows:

- 1 Browse to the *Technicolor Gateway GUI*.
- 2 On the **Toolbox** menu, click **Parental Control**.
- 3 On the *Navigation bar*, click **Configure**.
- 4 Under **Content-Based Filtering** you can change the settings of the content-based filter.

Configuration

Under **Content-Based Filtering**:

- 1 Select **Use Content-Based Filter** check box (if needed).
- 2 In the **Action for uncategorised sites** list, select a default action for sites that have not yet been categorised.
- 3 Under **Content Level**, select the content level you want to use.

If you want a more detailed view of the content that will be blocked for this level, click the **Edit** link next to the content level.

If needed, you can change the **Name**, **Description** and **Configuration** of the content level.

- 4 Click **Apply** after you have made your changes.

Creating your own content level

Proceed as follows:

- 1 In the **Pick a task** list, click **Create a new content level**.
- 2 Enter a **Name** and **Description** for your content level and click **Next**.
- 3 Under **Configuration**, select:
 - ▶ **Clone Existing Level** if you want to start from an existing level. You can now select the level that you want to clone.
 - ▶ **White list** if you want to block everything and select which content should be allowed.
 - ▶ **Black list** if you want to allow everything and select which content should be blocked.

Click **Next**.

- 4 Under **Configuration**:
 - ▶ Select the check boxes of the categories/groups you want to allow.
 - ▶ Clear the check boxes of the categories/groups you want to block.
- 5 Click **Apply**.
- 6 Configure the content-based filter with the new level. For more information, see “*Configuration*” on page 74.

9.1.2 Adding Rules for Address-Based Filtering

Introduction

Address-based filtering has a higher priority than content-based filtering. This means that when you are blocking a specific category, you can still access a specific site if you allow it in the address-based filter.

Example

If you block content from the **Finance / Investment** category and allow access to netbanking.mybank.com, netbanking.mybank.com will still be accessible.

Options

With the address-based filter you can:

- Deny access to a specific web site.
- Allow access to a specific web site.
- Redirect a web site.
- Redirect all web sites.

Deny access to a specific web site

Proceed as follows:

- 1 Browse to the *Technicolor Gateway GUI*.
- 2 On the **Toolbox** menu, click **Parental Control**.
- 3 Make sure the **Use Address-Based Filter** check box is selected.
- 4 Type the URL of the Web site you want to block (for example “mail.provider.com”) in the **Web Site** box.
- 5 In the **Action** list, click **Block**.
- 6 Click **Add**.

Allow access to a specific web site

Proceed as follows:

- 1 Browse to the *Technicolor Gateway GUI*.
- 2 On the **Toolbox** menu, click **Parental Control**.
- 3 Make sure the **Use Address-Based Filter** check box is selected.
- 4 Type the URL of the Web site you want to allow (for example “netbanking.bank.com”) in the **Web Site** box.
- 5 In the **Action** list, click **Allow**.
- 6 Click **Add**.

Redirect a web site

Proceed as follows:

- 1 Browse to the *Technicolor Gateway GUI*.
- 2 On the **Toolbox** menu, click **Parental Control**.
- 3 Make sure the **Use Address-Based Filter** check box is selected.
- 4 Type the URL of the Web site you want to redirect (for example “cracks.am”) in the **Web Site** box.
- 5 Click **Redirect** in the **Action** list.

- 6 Type the URL of the Web site you want to redirect to (for example “mycompany.com/internetpolicy.htm”) in the **Redirect** box.
- 7 Click **Add**.

Redirect all web sites

Proceed as follows:

- 1 Browse to the *Technicolor Gateway GUI*.
- 2 On the **Toolbox** menu, click **Parental Control**.
- 3 Make sure the **Use Address-Based Filter** check box is selected.
- 4 Type “*” in the **Web Site** box.
- 5 Click **Redirect** in the **Action list**.
- 6 Type the URL of the Web site you want to redirect to (for example “mycompany.com/internetpolicy.htm”) in the **Redirect** box.
- 7 Click **Add**.

9.2 Firewall

Introduction

The Technicolor Gateway comes with an integrated firewall that helps you protect your network from attacks from the Internet. This firewall has a number of predefined levels to allow you to adjust the firewall to your needs.

The Firewall is disabled by default. This means that *all* traffic passing through the Technicolor Gateway (from and to the Internet) is allowed.

Predefined security levels

The Technicolor Gateway has a number of predefined security levels. The following levels are available:

- **BlockAll:**

All traffic from and to the Internet is blocked. Game and Application Sharing is not allowed by the firewall.



Although BlockAll will block all connections, some mandatory types of traffic such as DNS will still be relayed between LAN and WAN by the Technicolor Gateway.

- **Standard:**

All outgoing connections are allowed. All incoming connections are blocked, except for inbound connections assigned to a local host via Game and Application Sharing.

- **Disabled:**

All in- and outgoing traffic is allowed to pass through your Technicolor Gateway, including Game and Application Sharing.

This is the default firewall level.

Changing the security level

Proceed as follows:

- 1 Browse to the *Technicolor Gateway GUI*.
- 2 On the **Toolbox** menu, click **Firewall**.
- 3 The **Firewall** page appears. In the upper-right corner, click **Configure**.
- 4 Under **Security Settings**, select the security level of your choice and click **Apply**.

Creating your own security level

Proceed as follows:

- 1 In the **Toolbox** menu click **Firewall**.
- 2 In the **Firewall** section, go to the **Configure** page.
- 3 In the **Pick a task** list, click **Create a new Security Level**.
- 4 In the **Name** box, type a name for the new security level and select an existing security level to clone from.
- 5 Click **Apply**.



Once you create a security level, you can not delete it anymore. It will always be available in the list of available security levels.

- 6 A page with the firewall settings of your newly created security level appears. Click **Edit**.
- 7 Enter the following information:
 - ▶ The **Name** of the firewall rule.

- ▶ The **Source Interface** and **IP Address** (range).



Use **Any** as IP address in case all traffic for the interface should be parsed.

Or you can type a **User-defined** IP address (range).

- ▶ The **Destination Interface** and **IP Address** (range)



Use **Any** as IP address in case all traffic for the interface should be parsed.

Or you can type a **User-defined** IP address (range).

- ▶ The **Service** type of the traffic; this can be a protocol (DNS, SMTP,...) or a specific Technicolor Gateway system service.

- 8 Select an **Action** that should be done on traffic for which the firewall rules applies:

- ▶ **Accept**: to allow the traffic to pass
- ▶ **Deny**: to drop the traffic (without notification)
- ▶ **Count**: to let the traffic pass, but count it (Hits)

- 9 Click **Apply**.

10 Support

Introduction

This chapter suggests solutions for issues that you may encounter while installing, configuring or using your Technicolor Gateway.

If the suggestions do not resolve the problem, look at the support pages on www.technicolor.com or contact your service provider.

Topics

This chapter describes the following topics:

Topic	Page
<i>10.1 Setup Troubleshooting</i>	80
<i>10.2 General Technicolor Gateway Troubleshooting</i>	81
<i>10.3 Wired Connection Troubleshooting</i>	83
<i>10.4 Wireless Connection Troubleshooting</i>	83
<i>10.5 Reset to Factory Defaults</i>	84

10.1 Setup Troubleshooting

Introduction

If you have trouble to install your Technicolor Gateway with the Setup CD, try the suggested solutions in this section.

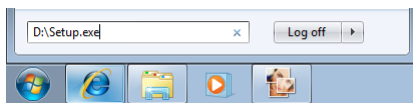
The Setup CD does not start automatically

If your computer runs:

- Microsoft Windows 7 and Vista:

- a Click the Windows **Start** button.

- b In the **Search programs and files** box, type the following path: **D:\Setup.exe**, where D stands for the drive letter of your CD- or DVD-ROM drive.



- c Press ENTER.

- Microsoft Windows XP:

- a Click the Windows **Start** button.

- b Click **Run**.

- c In the **Open** field, type the following path: **D:\Setup.exe**, where D stands for the drive letter of your CD- or DVD-ROM drive.

- Mac OS X:

- a On your desktop, double-click the CD icon.

- b Double-click **Menu**.

Your Technicolor Gateway has not been found


If you see this error during setup, make sure that:

- The Technicolor Gateway is turned on and fully initialized.
- Your computer has a valid IP address, that is any address but 0.0.0.0. For more information, consult the help of your operating system.
- No dedicated firewall device or router is placed between your computer and the Technicolor Gateway.
- No personal network security software (for example firewall software) is running on your computer.
- Your computer is correctly connected to the Technicolor Gateway.

10.2 General Technicolor Gateway Troubleshooting

None of the LEDs light up (Technicolor Gateway does not work)

Make sure that:

- The Technicolor Gateway is plugged into a power socket outlet.
- You are using the correct power supply for your Technicolor Gateway device.
 -  The power requirements for your Technicolor Gateway are clearly indicated on the identification label of the Technicolor Gateway. Only use the power adaptor supplied with your Technicolor Gateway.
- The Technicolor Gateway is turned on via the push button or rocker switch on the back panel.

The Broadband LED does not light up or is blinking

Make sure that:

- The DSL cable is correctly connected. For more information, see “3.1 Connecting the Technicolor Gateway to your Service Provider’s Network”.
- The DSL service is enabled on your telephone line. For more information, contact your Internet Service Provider.

The Internet LED does not light up

If you must authenticate to connect to the Internet, make sure that your user name and password are correct.

Proceed as follows:

- 1 Browse to the *Technicolor Gateway GUI*.
- 2 On the **Broadband** menu, click **Internet Services**.
- 3 Under **Internet**, click **View More**.
- 4 Check your user name
- 5 Re-enter your password.
- 6 Click **Connect**.

Technicolor Gateway unreachable

If you can not access your Technicolor Gateway via your web browser or the Setup wizard, you might consider a hardware reset as described in “10.5 Reset to Factory Defaults” on page 84.

10.3 Wired Connection Troubleshooting

Ethernet LED does not light up

Make sure that:

- The Ethernet cable is securely connected to the Ethernet port on your Technicolor Gateway and your computer.
- You are using the correct cable type for your Ethernet equipment, that is at least UTP CAT5 with RJ-45 connectors.

10.4 Wireless Connection Troubleshooting

No Wireless Connectivity

Try the following:

- Make sure that the wireless client adapter is enabled (message like “radio on”).
- Make sure that the wireless client is configured for the correct wireless settings (Network Name, security settings).
- If the signal is low or not available, try to reposition the Technicolor Gateway or (if available) redirect the antenna(s) of the Technicolor Gateway for optimal performance.
- *Change the wireless channel.*


Poor Wireless Connectivity or Range

Try the following:

- Check the signal strength, indicated by the wireless client manager. If the signal is low, try to reposition the Technicolor Gateway or (if available) redirect the antenna(s) of the Technicolor Gateway for optimal performance.
- *Change the wireless channel.*
- Use WPA(2)-PSK as encryption.
For more information, see “5.3 Securing Your Wireless Connection” on page 39.

Change the wireless channel

Proceed as follows:

- 1 Browse to the *Technicolor Gateway GUI*.
- 2 Under **Home Network**, click **Wireless**
 **Wireless:**
- 3 The **Wireless Access Point** page appears.
- 4 In the *Navigation bar*, click **Configure**.
- 5 Under **Configuration**, select the channel of your choice in the **Channel Selection** list.
- 6 Click **Apply**.

Can not connect via WPS

If you are having trouble connecting your wireless client via WPS, try to configure it manually. For more information, see “5.2 Connecting Your Wireless Client without WPS” on page 38.

10.5 Reset to Factory Defaults

Resetting your Technicolor Gateway

If at some point you can no longer connect to the Technicolor Gateway or you want to make a fresh install, it may be useful to perform a reset to factory defaults.

Warning

A reset to factory default settings deletes all configuration changes you made. Therefore, after the reset a reconfiguration of your Technicolor Gateway will be needed.

Also your wireless clients will have to be re-associated, as described in “5 The Technicolor Gateway Wireless Access Point” on page 35.

Methods

You can choose between:

- *Resetting the Technicolor Gateway via the Technicolor Gateway GUI*
- *Reset the Technicolor Gateway via the Reset button*

Resetting the Technicolor Gateway via the Technicolor Gateway GUI

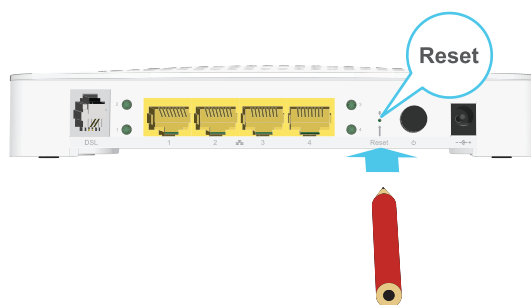
Proceed as follows:

- 1 Browse to the *Technicolor Gateway GUI*.
- 2 On the **Technicolor Gateway** menu, click **Configuration**.
- 3 In the **Pick a task** list, click **Reset my Technicolor Gateway**.
- 4 The Technicolor Gateway restores the initial configuration and restarts.
- 5 The Technicolor Gateway returns to the Technicolor Gateway home page (unless the IP address of your computer is not in the same subnet as the default IP address of the Technicolor Gateway, being 192.168.1.254).

Reset the Technicolor Gateway via the Reset button

Proceed as follows:

- 1 Make sure the Technicolor Gateway is turned on.
- 2 Push the **Reset** button for 7 seconds and the release it.



3 The Technicolor Gateway restarts.



Your system administrator may have disabled the physical reset button of the Technicolor Gateway. In this case, a hardware reset to defaults is not possible.

THOMSON TELECOM BELGIUM NV
Prins Boudewijnlaan 47
2650 Edegem
Belgium

www.technicolor.com



Copyright 2011 Technicolor. All rights reserved.
All tradenames referenced are service marks, trademarks, or
registered trademarks of their respective companies. Specifications
subject to change without notice.
DMS-CTC-20101206-0009 v1.0