



USER GUIDE

BUSINESS SERIES

2.4 GHz Wireless-G PTZ Internet Camera with Audio

Table of Contents

Chapter 1: Getting Started	1
How to Use this Guide	1
Document Style Conventions	1
Finding Information in Your PDF Documents	2
Finding Text in a PDF	2
Finding Text in Multiple PDFs	2
Chapter 2: Planning Your Wireless Network	4
Ad-Hoc and Infrastructure Modes	4
Network Layout	4
Wireless Security	5
Security Precautions	5
Security Threats Facing Wireless Networks	5
Chapter 3: Getting to Know the PTZ Internet Camera	7
Camera LCD Screen and Built-in Microphone	7
Camera LEDs	7
Camera Ports and Button	8
Chapter 4: Connecting the PTZ Internet Camera	10
Overview	10
Camera Installation Guidelines	10
Connection to a Wired Network for Setup	10
Connection to a Wireless Ad-Hoc Network for Setup	12
Moving the Camera to a Different Network	12
Placement Options	13
Stand Option	13
Wall Mount Option	13
Audio Option	14
Chapter 5: Upgrading Firmware	15
Chapter 6: Installing Software	16
Chapter 7: Configuring Software	22
Home	22
View Video	23
Setup	23
Basic	25
Device Settings	25
Set Date/Time	25
Network Settings	26
RTP/RTSP	27
Wireless Settings	27
Other	29
Audio/Video	30
MPEG-4 Settings	31

MJPEG Settings	31
Mobile Settings	31
Adjustments	32
Video Options	32
Audio Options	32
Maintenance	33
Restore Factory Defaults	33
Restart	33
Firmware Upgrade	34
Configuration	34
Users	34
Authentication — Check the box to enable authentication check.	34
Administrator	34
User List	34
DDNS	35
Mail & FTP	36
E-mail Alert	36
FTP Alert	37
Motion Detection	38
Event	38
Pan/Tilt	39
Pan/Tilt	39
Set Preset	39
Pan/Tilt Control	40
Rotation Sequence	40
Status	41
System	41
Image	41
Network	42
Wireless	42
Syslog	43
Log	43
Linksys Web	43
Exit	43
Appendix A: Troubleshooting	44
Questions and Answers	44
Windows Help	45
TCP/IP	45
Shared Resources	46
Network Neighborhood/My Network Places	46
Appendix B: Glossary.	47
Appendix C: Specifications	51
WVC200	51
WVC210	53
Appendix D: Regulatory Information	55
FCC Statement	55

FCC Caution	55
FCC Radiation Exposure Statement	55
Safety Notices	55
Industry Canada (Canada)	56
User Information for Consumer Products Covered by EU Directive 2002/96/EC on Waste Electric and Electronic Equipment (WEEE)	56
Appendix E: Contact Information	64
US/Canada Contacts	64
EU Contacts	64
Appendix F: Warranty Information	65
LIMITED WARRANTY	65
Exclusions and Limitations	65
Obtaining Warranty Service	66
Technical Support	66
Appendix G: Software License Agreement	67
Software in Linksys Products:	67
Software Licenses:	67
Schedule 1 Linksys Software License Agreement	67
Schedule 2	69
Schedule 3	74

Getting Started

The focus of this guide is on the WVC210 PTZ Internet Camera, with references to the WVC200 camera where appropriate. Advanced features and procedures are covered in the *Linksys Video Surveillance Application User Guide*.

How to Use this Guide

This User Guide has been designed to make understanding networking with the camera easier than ever. Look for the following items when reading this guide:



WARNING: This graphic means there is a Warning and is something that could damage your self, property, or the camera.



NOTE: This checkmark means there is a Note of interest and is something you should pay special attention to while using the camera.



CAUTION: This exclamation point means that caution should be used when performing a step or a serious error may occur.

Document Style Conventions

The following style conventions are used in this document.

- **Menus, Tabs, and Buttons:** Bold type is used to indicate the name of a button, menu, or tab in an application.

Example: Click **Submit All Changes** to save your entries.

- **Screens, Page Areas, and Fields:** Italic type is used to indicate the name of screens, page areas, and fields.

Example: Scroll down to the *PBX Parameters* area of the screen.

- **Data Input:** The **Courier** font is used to indicate characters that you should type into a field exactly as printed in this guide.

Example: In the *Mailbox Subscribe Expires* field, type **30**.

In this example, you would type the number 30 in the field.

- **Parameters:** Angle brackets and italic type indicate parameters that you must replace with the appropriate data.

Example: Type **800@<IP address of device>:5090**

In this example, you would type the characters 800@, followed by the IP address of your device, followed by a colon and the number 5090.

Finding Information in Your PDF Documents

The PDF Find/Search tool lets you find information quickly and easily online. You can:

- Search an individual PDF
- Search multiple PDFs at once (for example, all PDFs in a specific folder or disk drive)
- Perform advanced searches

Finding Text in a PDF

By default, the Find toolbar is open. If it has been closed, choose **Edit > Find**.

Use Find to search for text in an open PDF:

1. Enter your search terms in the *Find* box on the toolbar.
2. Optionally click the arrow next to the Find text box to refine your search (such as Whole words only).
3. Press **Enter**. Acrobat jumps to the first instance of the search term. Pressing **Enter** again continues to more instances of the term.

Finding Text in Multiple PDFs

The *Search* window lets you search for terms in multiple PDFs. The PDFs do not need to be open. Either:

- Choose **Edit > Search**
or
- Click the arrow next to the *Find* box and choose Open Full Acrobat Search. The *Search* window appears.

In the *Search* window:

1. Enter the text you want to find.
2. Choose **All PDF Documents in**
3. From the drop-down box, choose **Browse for Location**.
4. Choose the location you want to search, either on your computer or on a network, then click **OK**.
5. If you want to specify additional search criteria, click **Advanced Search Options**, and choose the options you want.

6. Click **Search**.

For more information about the Find and Search functions, see the Adobe Acrobat online help.

Planning Your Wireless Network

A wireless local area network (WLAN) is exactly like a regular local area network (LAN), except that each computer in the WLAN uses a wireless device to connect to the network. Computers and other devices, such as peripherals, in a WLAN share the same frequency channel and SSID, which is an identification name for wireless devices.

Ad-Hoc and Infrastructure Modes

Unlike wired networks, wireless networks have two different modes in which they may be set up: infrastructure and ad-hoc. An infrastructure configuration is a WLAN and wired LAN communicating to each other through an access point. An ad-hoc configuration is computers with wireless capabilities communicating directly with each other. Choosing between these two modes depends on whether or not the wireless network needs to share data or peripherals with a wired network or not.

If the computers on the wireless network need to be accessed by a wired network or need to share a peripheral, such as a printer, with the wired network computers, the wireless network should be set up in infrastructure mode. The basis of infrastructure mode centers around an access point, which serves as the main point of communications in a wireless network. (A wireless router can also be used because a wireless router incorporates the capabilities of an access point.) Access points transmit data to PCs equipped with wireless network cards, which can roam within a certain radial range of the access point. Multiple access points can be arranged to work in succession to extend the roaming range, and can be set up to communicate with your Ethernet (wired) hardware as well.

If the wireless network is relatively small and needs to share resources only with the other computers on the wireless network, then the ad-hoc mode can be used. Ad-hoc mode allows computers equipped with wireless transmitters and receivers to communicate directly with each other, eliminating the need for an access point. The drawback of this mode is that wireless-equipped computers are not able to communicate with computers on a wired network. And, of course, communication between the wireless-equipped computers is limited by the distance and interference directly between them.

Network Layout

The PTZ Internet Camera is compatible with all 802.11g routers, such as model number WRVS4400N, as well as access points, including model number WAP4400N. The camera can also communicate with network adapters, such as the Wireless-G Notebook Adapter (model number WPC4400N) for your laptop computers, Wireless-G PCI Adapter (model numbers WMP200) for your desktop PCs, and Wireless-G USB Adapter (model number WUSB200) for your computers when you want to enjoy USB connectivity.

With these, and many other Linksys products, your networking options are limitless. Go to the Linksys website at www.linksys.com/international for more information about products that work with the PTZ Internet Camera.

Wireless Security

Linksys wants to make wireless networking as safe and easy for you as possible. The current generation of Linksys products provide several network security features, but they require specific action on your part for implementation. So, keep the following in mind whenever you are setting up or using your wireless network.

Security Precautions

The following is a complete list of security precautions to take (at least steps 1 through 5 should be followed):

1. Change the default SSID.
2. Disable SSID Broadcast.
3. Change the default password for the Administrator account.
4. Change the SSID periodically.
5. Use the highest encryption algorithm possible. Use WPA if it is available. Please note that this may reduce your network performance.
6. Change the WEP encryption keys periodically.



NOTE: Some of these security features are available only through the network router or access point. Refer to the router or access point's documentation for more information.

Security Threats Facing Wireless Networks

Wireless networks are easy to find. Hackers know that in order to join a wireless network, wireless networking products first listen for "beacon messages". These messages can be easily decrypted and contain much of the network's information, such as the network's SSID (Service Set Identifier). Here are the steps you can take:

Change the administrator's password regularly. With every wireless networking device you use, keep in mind that network settings (SSID, WEP keys, etc.) are stored in its firmware. Your network administrator is the only person who can change network settings. If a hacker gets a hold of the administrator's password, he, too, can change those settings. So, make it harder for a hacker to get that information. Change the administrator's password regularly.

SSID. There are several things to keep in mind about the SSID:

- Disable Broadcast
- Make it unique
- Change it often

Most wireless networking devices will give you the option of broadcasting the SSID. While this option may be more convenient, it allows anyone to log into your wireless network. This includes hackers. So, don't broadcast the SSID.

Wireless networking products come with a default SSID set by the factory. (The Linksys default SSID is "linksys.") Hackers know these defaults and can check these against your network. Change your SSID to something unique and not something related to your company or the networking products you use.

Change your SSID regularly so that any hackers who have gained access to your wireless network will have to start from the beginning in trying to break in.

MAC Addresses. Enable MAC Address filtering. MAC Address filtering will allow you to provide access to only those wireless nodes with certain MAC Addresses. This makes it harder for a hacker to access your network with a random MAC Address.

WEP Encryption. Wired Equivalent Privacy (WEP) is often looked upon as a cure-all for wireless security concerns. This is overstating WEP's ability. Again, this can only provide enough security to make a hacker's job more difficult.

There are several ways that WEP can be maximized:

- Use the highest level of encryption possible
- Use "Shared Key" authentication
- Change your WEP key regularly

WPA/WPA2 Personal. Wi-Fi Protected Access (WPA) This method offers two encryption methods, TKIP and AES, with dynamic encryption keys.

A network encrypted with WPA/WPA2 is more secure than a network encrypted with WEP, because WPA/WPA2 uses dynamic key encryption. To protect the information as it passes over the airwaves, you should enable the highest level.

Implementing encryption may have a negative impact on your network's performance, but if you are transmitting sensitive data over your network, encryption should be used.

These security recommendations should help keep your mind at ease while you are enjoying the most flexible and convenient technology Linksys has to offer.



CAUTION: Always remember that each device in your wireless network **MUST** use the same encryption method and encryption key or your wireless network will not function properly.

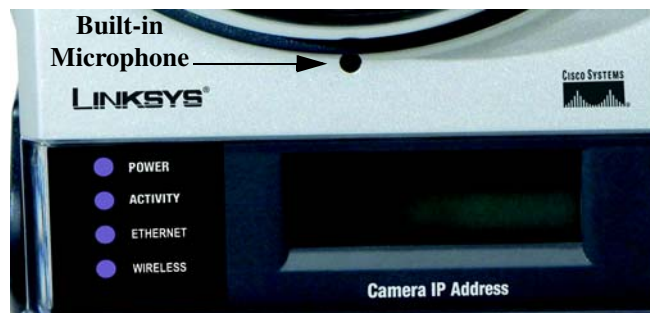
Getting to Know the PTZ Internet Camera

Congratulations on purchasing your camera from Linksys! Linksys has the only two cameras that are Wi-Fi certified in the United States, one of which is the WVC210.

Camera LCD Screen and Built-in Microphone

The camera has a LCD screen that indicates the camera's current IP address and whether it is a fixed or dynamic address. If the camera uses a fixed IP address, then the screen will display the word "FIXED." If the camera uses a dynamic IP address, then the screen will display the word "DHCP."

The built-in microphone is located approximately one inch below the LCD screen, in the middle of the camera's front panel. It has a range of approximately 9 feet (3 meters), depending on environmental conditions.



Camera LEDs

The camera has four LEDs to let you know how the camera is functioning.

LED	Description
POWER	Amber. The POWER LED lights up when the camera is powered on. It flashes for about 10-15 seconds while the camera is initializing.
ACTIVITY	Green. The ACTIVITY LED flashes when there is activity.
ETHERNET	Green. The ETHERNET LED lights up when there is a connection to a wired network. It flashes when data is transmitted to or received from the wired network.
WIRELESS	Green. The WIRELESS LED lights up when there is a connection to a wireless network. It flashes when data is transmitted to or received from the wireless network.

**WVC210 Bottom****WVC200 Back**

NOTE: Resetting the camera will erase all of your settings, such as encryption information, and replace them with the factory defaults. Do not reset the camera if you want to retain these settings.

Camera Ports and Button

The camera features three ports and a Reset button on the bottom panel.

Port/Button	Description
POWER	This port is where you will connect the 5V power adapter.
MIC IN	This port is where you will connect the 3.5 mm input jack of your external microphone (optional).
LAN	This port is where you will connect the Ethernet network cable.
RESET	This button is what you will press if you need to reset the camera. Insert a paper clip into the opening next to the Ethernet port. Then press the button and hold it in for five seconds. Be aware that this will erase all of your settings and return the camera to factory defaults

Port/Button	Description
SPKR OUT	This port is where you will connect the 3.5 mm input jack of your external speaker (optional). The speaker needs to be PC, or a powered speaker.

Connecting the PTZ Internet Camera

Overview

Before you set up the camera, connect it to a wired or wireless network. Refer to the following sources for additional information:

- WVC200/210 Quick Install Guide
- Linksys Video Surveillance Application User Guide

If you need to move the camera from a wired network to a wireless network, or vice versa, go to this section, "Moving the Camera to a Different Network."

Camera Installation Guidelines

Consider the following guidelines before installing and mounting your cameras. While the detection window and the degree of sensitivity can be optimized later, it is best to optimize your camera location first.

- Choose a location that provides adequate coverage of the area to be monitored.
- If using the microphone in the camera, note that the cameras are designed to pick up audio from a distance (unlike a web camera that you would place near you.)
- If using an external microphone or speaker, place the microphone far enough away from the speaker to avoid feedback. The volume of the speaker and the background noise of the environment will determine the exact distance, possibly up to one yard (one meter) away.
- Cameras mounted outdoors should be installed in an IP66-certified enclosure to protect the camera from the elements, while maintaining acceptable operating temperatures. If an enclosure is used, an external microphone is required for audio.
- If using motion detection, consider potential sources of false positives, such as trees and shrubs, drastic light changes, wandering animals, and traffic.

Connection to a Wired Network for Setup

1. Attach the antenna.
2. Connect the Ethernet network cable to your network switch or router.

3. Connect the other end of the cable to the Ethernet port on the camera.



4. Connect the power adapter to the Power port on the camera.



5. Plug the power adapter into an electrical outlet.
6. The camera's Ready LED flashes while the camera is initializing. The camera is ready for use when the Ready and Ethernet LEDs are solidly lit.



CAUTION: You **MUST** connect the camera to a PC, router, or switch using the Ethernet network cable **BEFORE** powering on the camera. Otherwise, the camera will not function.

Connection to a Wireless Ad-Hoc Network for Setup

1. Make sure your computer has the following wireless settings:
 - SSID - linksys
 - Network Mode - Ad-Hoc
 - Channel - 6
 - WEP - Disabled
2. Attach the antenna.
3. Connect the power adapter to the Power port on the camera.
4. Plug the power adapter into an electrical outlet. The camera's Ready LED flashes while the camera is initializing. The camera is ready for use when the Ready and Wireless LEDs are solidly lit.

Moving the Camera to a Different Network

When you move the camera from a wired network to a wireless network, or vice versa, you must power off the camera before connecting to the new network. Proceed to the appropriate instructions.

To move the camera from a wired network to a wireless network, follow these instructions:

1. Unplug the power adapter from the camera.
2. Unplug the Ethernet network cable from the camera.
3. Re-connect the power adapter to the Power port on the camera. The camera's Ready LED flashes while the camera is initializing. The camera is ready for use when the Ready and Wireless LEDs are solidly lit.

To move the camera from a wireless network to a wired network, follow these instructions:

1. Unplug the power adapter from the camera.
2. Connect the Ethernet network cable to your PC, router, or switch.
3. Connect the other end of the cable to the Ethernet port on the camera.
4. Re-connect the power adapter to the Power port on the camera. The camera's Ready LED flashes while the camera is initializing. The camera is ready for use when the Ready and LAN LEDs are solidly lit.

Placement Options

There are two ways to place the camera. The first way is to place the camera horizontally on a surface using the included stand. The second way is to mount the camera on a wall using an optional wall mount stand. The wall mount is not supplied in the camera kit.

Stand Option

1. The camera includes a camera Desktop Stand. Insert the bottom end of the camera into the Stand.

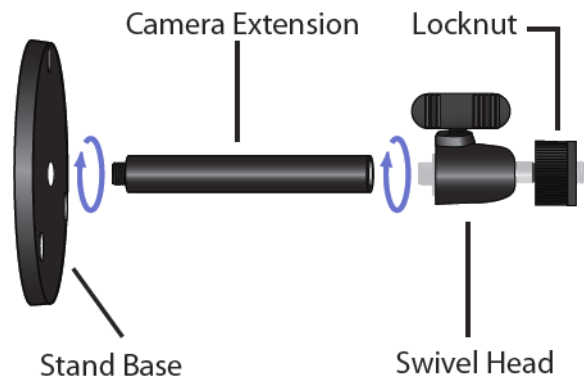


2. Place the camera, and adjust its aim accordingly.



Wall Mount Option

There is a standard stand (not included) that can be used to attach to the back of the camera (1/4"x20 thread) to allow the camera to be mounted on a wall or ceiling.



1. Determine where you want to mount the camera. Attach the wall mount stand to the wall.
2. Attach the camera to the wall mount.
3. Adjust the camera's aim accordingly.

Audio Option

If you want to use your own microphone instead of the camera's built-in microphone, then follow these instructions:

1. Connect the 3.5 mm input jack of your microphone to the camera's MIC IN port on its bottom panel. The built-in microphone will automatically be disabled.
2. Place the external microphone in an appropriate location.

If you want to use an optional external speaker with the camera, then follow these instructions:

1. Connect the 3.5mm jack of your speaker to the camera's SPKR OUT port on its bottom panel.
2. Place the external speaker in an appropriate location.

Upgrading Firmware

The camera ships with the firmware release of 1.0.0. The camera's firmware is upgraded through the Web-based Utility's **Maintenance** tab. Follow these instructions:

1. Download the firmware from Linksys's website at www.linksys.com.
2. Extract the file.
3. Access the camera's Web-based Utility, and click the **Maintenance** tab.



4. On the *Maintenance* screen, click the **Firmware Upgrade** button.
5. Click the **Browse** button to find the extracted file, and then double-click the filename.
6. Click the **Start Upgrade** button, and follow the on-screen instructions. Click the **Cancel** button to cancel the firmware upgrade. For more information, click the **Help** button.

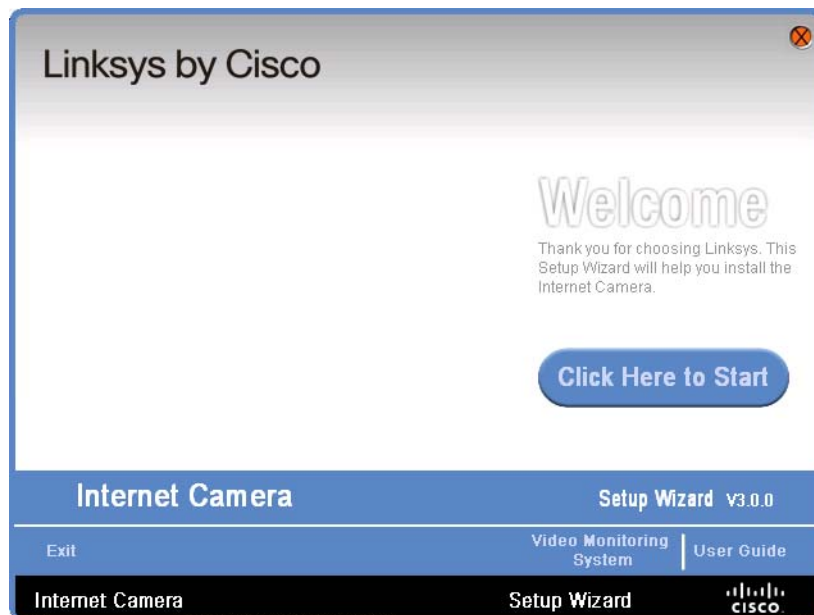


NOTE: Linksys recommends that you upgrade the camera's firmware within your network; in other words, use a computer within the camera's local network. If you attempt to upgrade the camera's firmware from a remote location—using a computer outside of the camera's local network—the upgrade may fail.

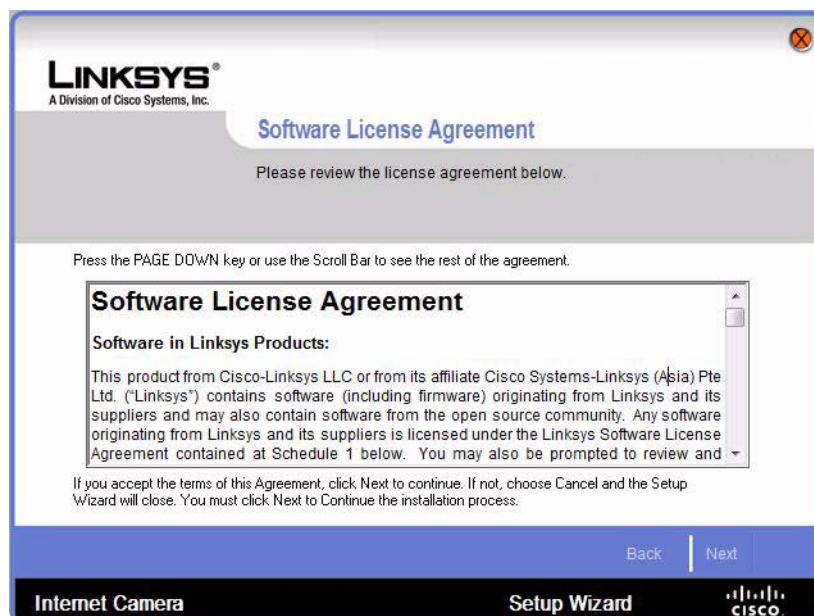
Installing Software

Your Linksys Internet Camera comes with configuration software that you install on your computer. Follow these steps to install the software.

1. Insert the Setup CD into your CD-ROM drive. If the CD doesn't run automatically, go to **My Computer** and click on your CD-ROM drive.
2. The Welcome screen will appear. Click the **Click Here to Start** button.



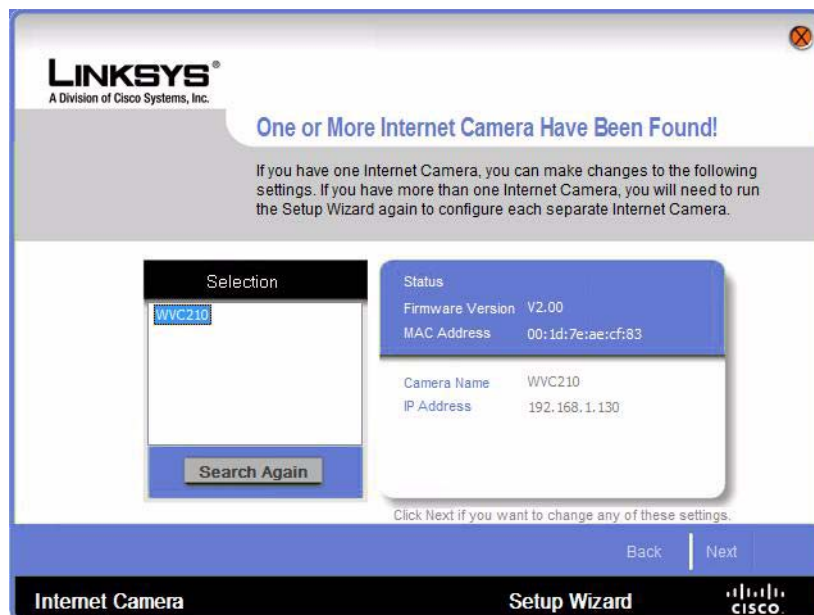
3. The license agreement screen will appear, click **Next** if you agree and wish to proceed.



- The Wizard will now search for your camera.



- Once found, highlight the camera and click **Next**. If the camera you want is not displayed in the Selection box, click **Search Again**.



- The default user name and password is admin. Type admin in lowercase letters, in the *Administrator Name* and *Administrator Password* fields, then click **OK**.



For security purposes, it is recommended that you change the default name and password using the camera's web-based utility at a later time.

7. On the *Basic Settings* screen, change the following settings:

The screenshot shows the 'Basic Settings' window for a Linksys Internet Camera. The window title is 'Basic Settings' and it includes the Linksys logo and 'A Division of Cisco Systems, Inc.' The main heading is 'Basic Settings' with a sub-heading 'Camera Settings'. Below this, there is a form with the following fields and values:

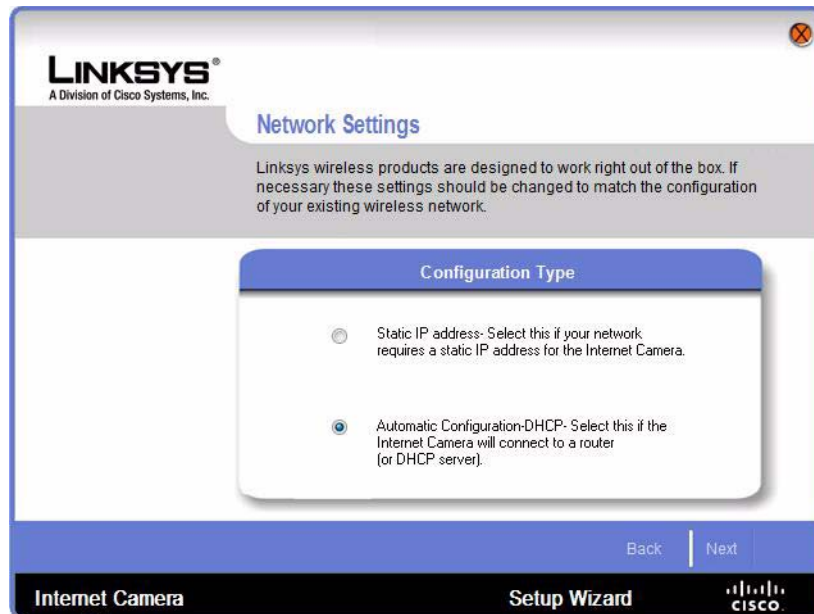
Camera Name:	WVC210
Description:	Internet Camera w/ two way audio
Time Zone:	((GMT-08:00) Pacific Time (US & Ca
Date:	3 / 12 / 2008
Time:	1 : 10 PM

At the bottom of the window, there are 'Back' and 'Next' buttons, and a footer with 'Internet Camera', 'Setup Wizard', and the Cisco logo.

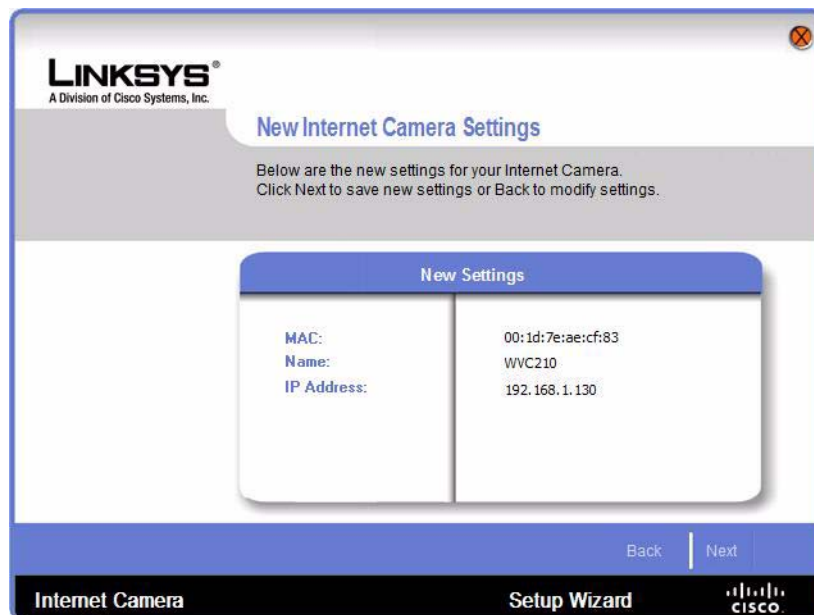
- **Camera Name** Enter a unique name for the camera, up to 15 characters in length. Unique names are helpful when you are using multiple cameras on the same network.
- **Description** Enter a description, up to 32 characters in length, with additional information, such as the location of the camera.
- **Time Zone** Select the time zone that corresponds with the camera's location.
- **Date** Enter the current date in the provided fields.
- **Time** Enter the current time in the provided fields.

You have now finished identifying the camera and making the basic settings. To continue configuring the camera's IP address, click **Next**.

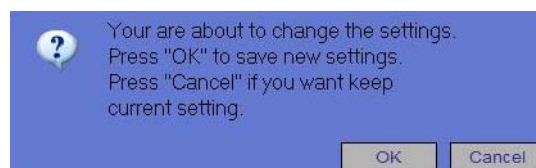
1. If you want to assign the IP address, then select **Static IP address**, otherwise leave the default setting, Automatic Configuration DHCP. Click **Next** to continue.



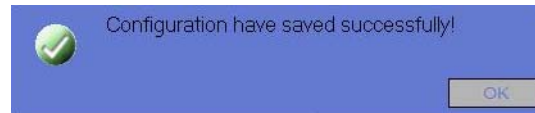
2. The New Internet Camera Settings screen will appear and display the camera's settings. Click **Next** to continue or click **Back** to make changes.



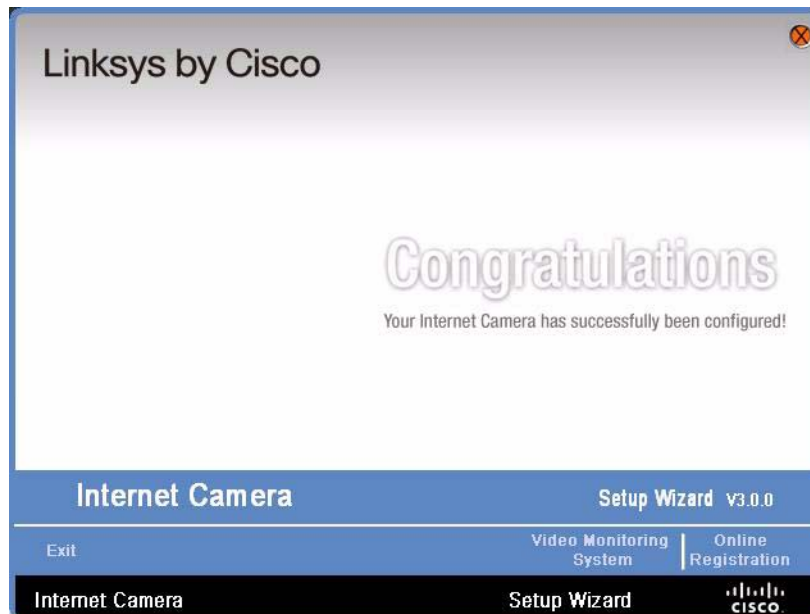
3. A confirmation window will appear, click **OK** to confirm the settings.



4. A Configuration successfully saved window will appear, click **OK** to continue.



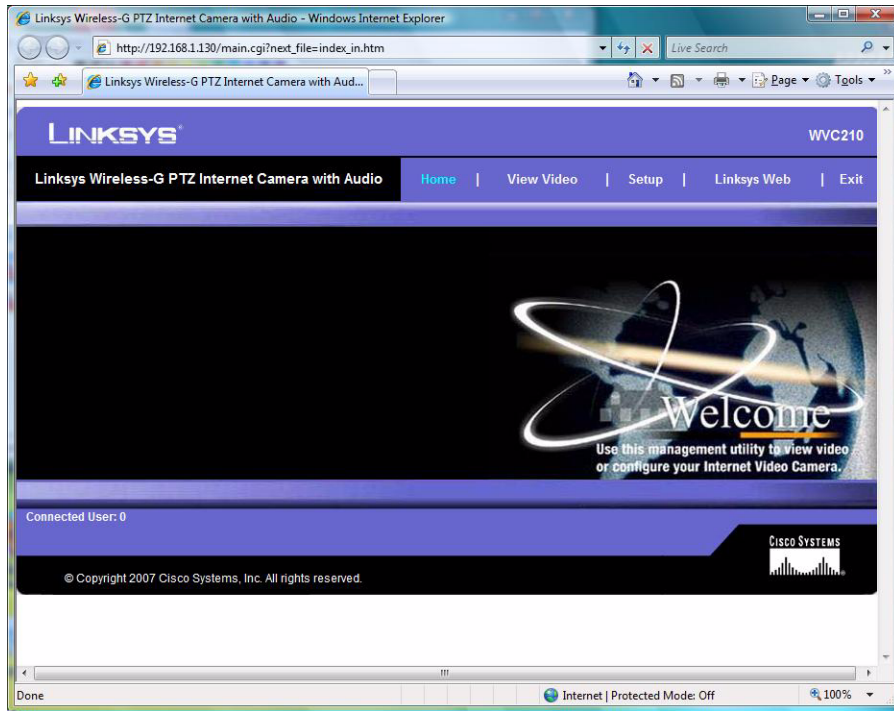
5. The Wizard will now finish with a *Congratulations* screen. Click **Exit** to automatically launch your default web browser and proceed to the Home page login screen.



6. The login prompt will appear, enter **admin** in both the *User name* and *Password* fields.



7. The Linksys Wireless-G PTZ Internet Camera home page launches.



8. The basic installation procedure is now complete. For further information on software for the Linksys Cameras, consult the *Linksys Video Surveillance Application User Guide*. You may now proceed with [Chapter 7, "Configuring Software."](#)

Configuring Software

This section describes the basic functions of the camera software. For more advanced information, please see the *Linksys Video Surveillance Application User Guide*.



NOTE: By default the camera is set to receive an IP address from a DHCP server. If you do not have a DHCP server on your network, you can set a static IP address by pressing the Reset button on the camera for less than 10 seconds. A default IP address of 192.168.1.99 will be assigned to the camera..

To determine if you have a DHCP server on your network, consult your network administrator. If you do not have a DHCP server, access your camera through the default IP address.

Open your web browser and enter the assigned IP address in *Address* field in the following format:

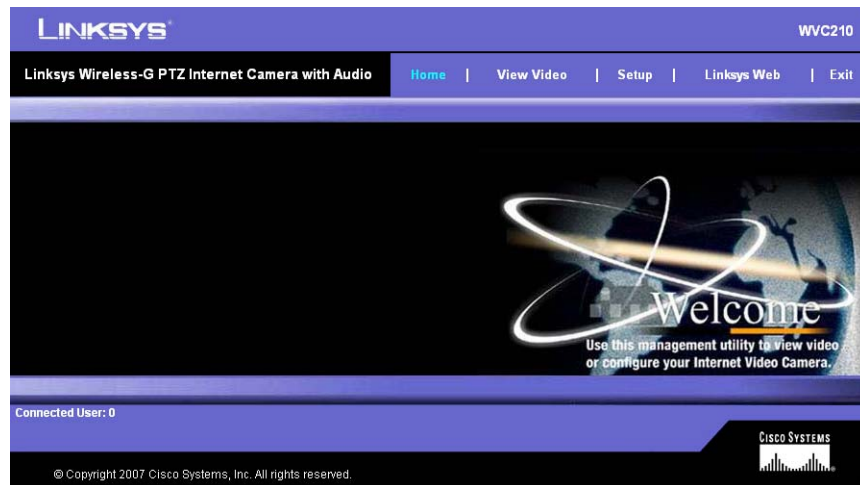
http://192.168.1.99

Press the **Enter** key and the *Login* screen will appear. The first time you open the web based utility, enter **admin** (the default user name) in the *User name* field and leave the password blank. Click the **OK** button. You can set a password later from the *Setup > Users* screen.



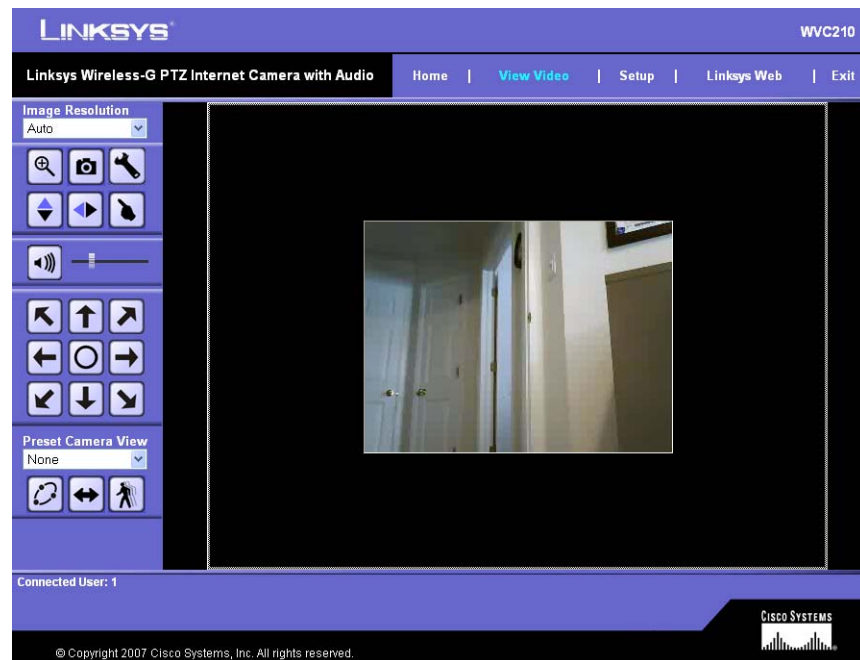
Home

The *Home* screen is the first screen that is displayed. The Home screen identifies the camera type in the upper right hand corner, and has tabs across the top of the screen labeled **View Video**, **Setup**, **Linksys Web**, and **Exit**.



View Video

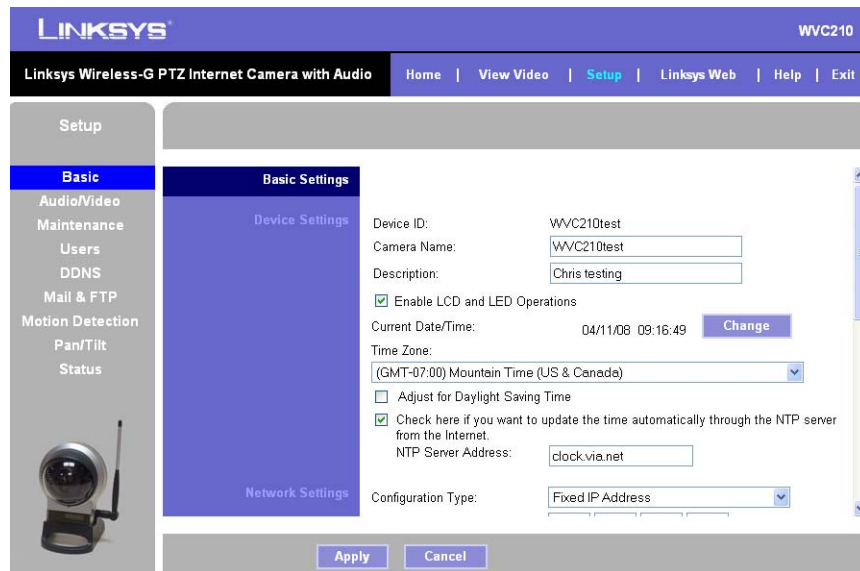
The View Video tab is the main screen for controlling the real-time view of your camera.



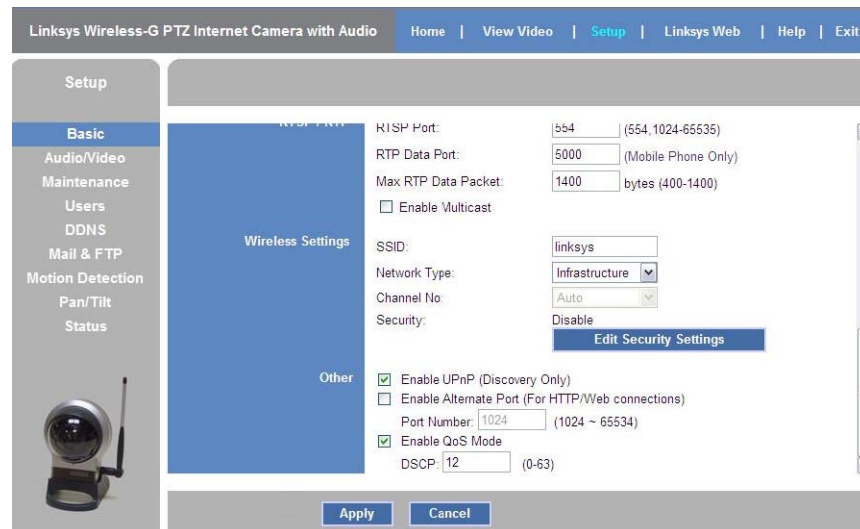
From this screen you can control the basic functions of the camera.

Setup

The Setup Tab on the top of the screen has a number of categories along the left side of the window, and is where most of the camera's functionality is configured. The Setup Window is a scrolling window, the following graphic shows the top half of the window.



The following graphic shows the bottom half of the window.



The following section describes all of the vertical tabs that are available under the Setup tab.

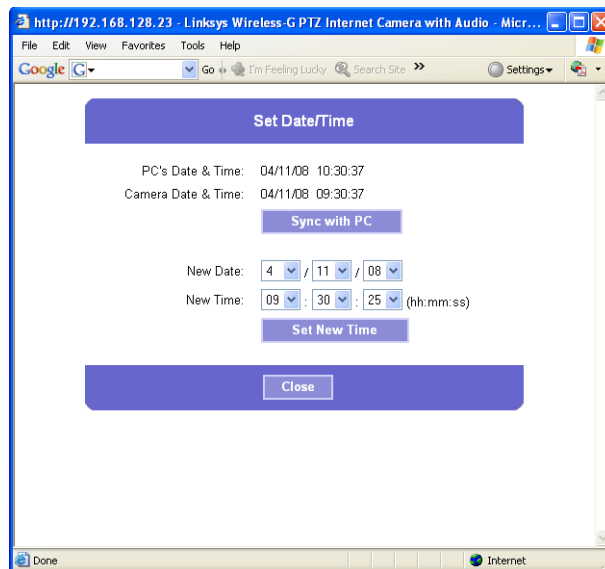
Basic

Clicking on the Basic Tab shows the **Basic Settings, Device Settings, Network Settings, RTSP/RTP, Wireless Settings, and Other** settings for the camera.

Device Settings

- **Device ID** — This displays the ID for the camera. This is used by the setup wizard, viewer and the recorder utility to identify the camera.
- **Camera Name** — Enter the preferred name for the camera. The camera name must not exceed 15 alphanumeric characters.
- **Description** — This field is used for entering a description, such as the location of the camera. Entering a description will help you identify the camera. It must not exceed 32 alphanumeric characters.
- **Enable LCD and LED Operations** — Enable this if you want to turn on the LCD or LED.
- **Current Date/Time** — It displays the current date and time. If it's not correct, click the **Change** button to modify the time settings.

Set Date/Time



- **PC's Date and Time** — Displays the current time of the PC connected to the web-based utility.
- **Camera Date and Time** — Displays the current time as configured on the camera.
- **Sync with PC** — Allows you to synchronize the camera to the clock on the PC connected to the web-based utility.
- **New Date** — Allows you to manually enter the date for the camera.

- **New Time** — Allows you to manually enter a new clock setting for the camera.
- **Set New Time** — Use this button to implement the new date and/or time setting.
- **Time Zone** — Choose the time zone for your location from the drop-down list.
- **Adjust for Daylight Saving Time** — Select this option if your location is currently using Daylight Saving Time.



NOTE: You must uncheck the Adjust for Daylight Saving Time check box manually when Daylight Saving Time ends in your time zone.

- **Check here if you want to update the time automatically through the NTP Server on the Internet** Enable or disable the time server feature as required. If enabled, the camera will contact a network time server at regular intervals and update its internal timer.
- **NTP Server Address** Enter the address of the NTP Server.



NOTE: If connecting to a router, it may be necessary to enable port forwarding.

Network Settings

Configuration Type

- **Obtain An IP Address Automatically** — The camera defaults to this option, allowing a DHCP server on your network to automatically assign the camera an IP address.
- **Fixed IP Address** — Use this option to assign a fixed (static) IP address to the camera. Assign an IP address that is unique to your local network. When using a fixed IP address, you must configure the IP Address, Subnet Mask, Gateway and DNS.
- **IP Address** — The IP address assigned to the camera is displayed.
- **Subnet Mask** — The Subnet Mask assigned to the camera is displayed.
- **Gateway** — IP address of the gateway router between this device and management stations that exist on other network segments.
- **Primary DNS** — The IP address of your ISP's primary server, which translates the names of websites into IP addresses.
- **Secondary DNS** — The IP address of your ISP's secondary server, which translates the names of websites into IP addresses.

RTP/RTSP

RTSP (Real Time Streaming Protocol) is a standard for connected client(s) to control streaming data (MPEG-4) over the World Wide Web.

RTP (Real-Time Transport Protocol) is an Internet protocol used for transmitting single real-time multimedia data such as audio and video to a select group of connected clients. RTSP uses RTP to format packets of multimedia content.

- **RTSP Port** — Enter the RTSP Port number (between 1024 to 65535) in the field provided. The default RTSP port is **554**.
- **RTP Data Port** — The camera's data port number has been pre-configured and can be used for multicasting. It does not normally need to be re-configured. If a port number does need to be changed, please contact your network administrator. If a change is necessary, enter the data port number (1024 to 65535) in the field provided. The default RTP port is **5000**.
- **Max RTP Data Packet** — This allows you to define the maximum size of the RTP data packets. The length can be between 400 to 1400 bytes. The default value is **1400** bytes.
- **Enable Multicast** — The camera's Video and Audio IP Addresses have been pre-configured and can be used for multicasting. Normally these settings do not need to be reconfigured. If an address does need to be changed, please contact your network administrator.

Wireless Settings

SSID — Enter the network's SSID or network name here.

Network Type — Select the network's mode, Infrastructure or Ad-hoc.

Channel No — If the camera is set to ad-hoc mode, select its channel setting from the drop-down menu.

Security — Click the **Edit Security Settings** button to display the *Wireless Security* screen.

Security Mode

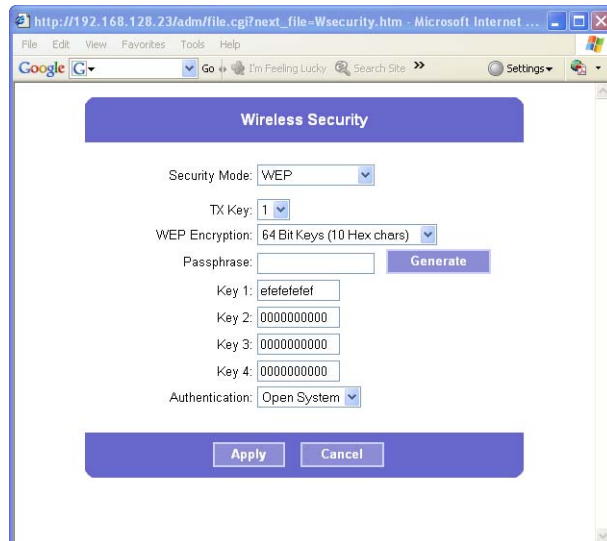
Select the appropriate option based on your wireless network configuration.

Disabled

This option implements no security on your wireless network. Data is not encrypted before transmission.

WEP

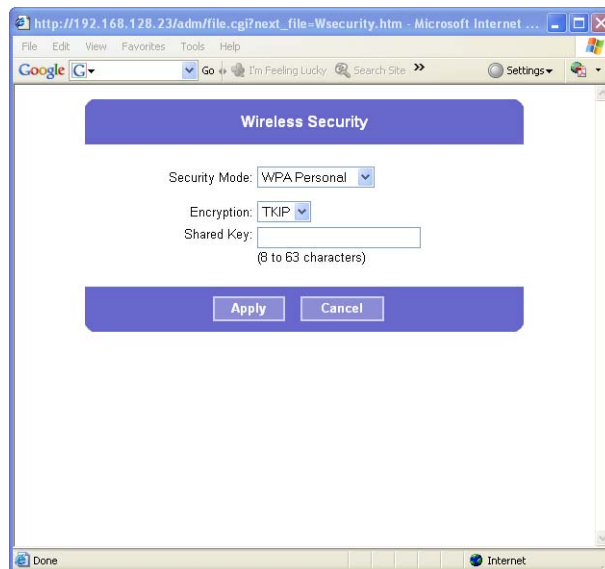
WEP is a basic encryption method, which is not as secure as later methods such as WPA-Personal or WPA2 Personal.



- **TX Key** — Select the number of the key used on the wireless network.
- **WEP Encryption** — Select the appropriate option for key length based on your network settings.
- **Passphrase** — Type in the passphrase used to generate WEP keys on your network and click the **Generate** button.
- **Key 1-4** — Key values can be entered in manually or generated from a passphrase.
- **Authentication** — Select the appropriate authentication type used on the wireless network.

WPA Personal

This method offers two encryption methods, TKIP and AES, with dynamic encryption keys



- **Encryption** — Select between TKIP and AES.
- **Shared Key** — Enter the shared key used for accessing the wireless network.

WPA2 Personal

Encryption is limited to AES, and there is a field to enter a shared key.

Other

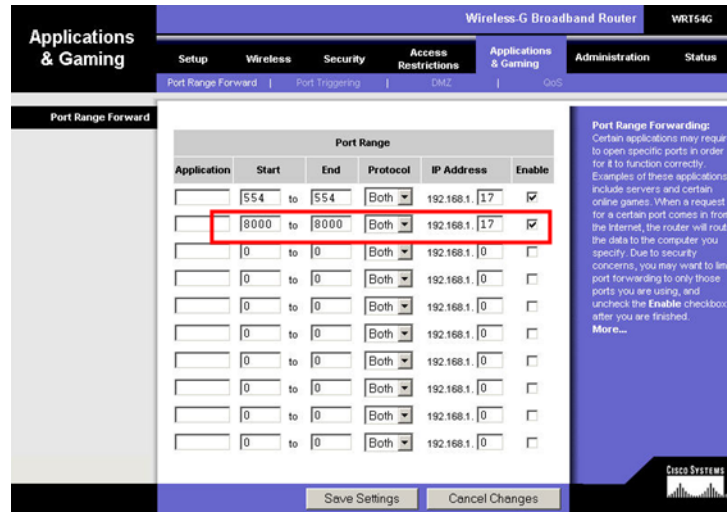
- **Enable UPnP (Discover Only)**— If enabled, the camera will broadcast its availability through Universal Plug and Play protocol. UPnP compatible systems such as Windows XP will then be able to detect the presence of the camera.
- **Enable Alternate Port** — If enabled, HTTP connections (from your web browser, viewer and recorder utility) can use an alternative port instead of port 80 (the standard HTTP port) to access the camera.
- **Enable QoS Mode**—Check to enable Quality of Service (QoS) for media streams.
- **DSCP**—If QoS is enabled, please enter the Differentiated Services Code Point (DSCP) to be used on processing QoS packets. The default value is 12.

To set up port forwarding use the following procedure:

1. Enable the alternate port by checking the box, then enter a port number in the field.
2. Click on Apply and close the page. When you open the URL to the camera, you now must specify the port number, for example:

<http://192.168.128.23:1024>

3. Connect to your router and go to the Port Forwarding page. Add the IP address of your camera as well as the port that you specified in the camera set up. For example:

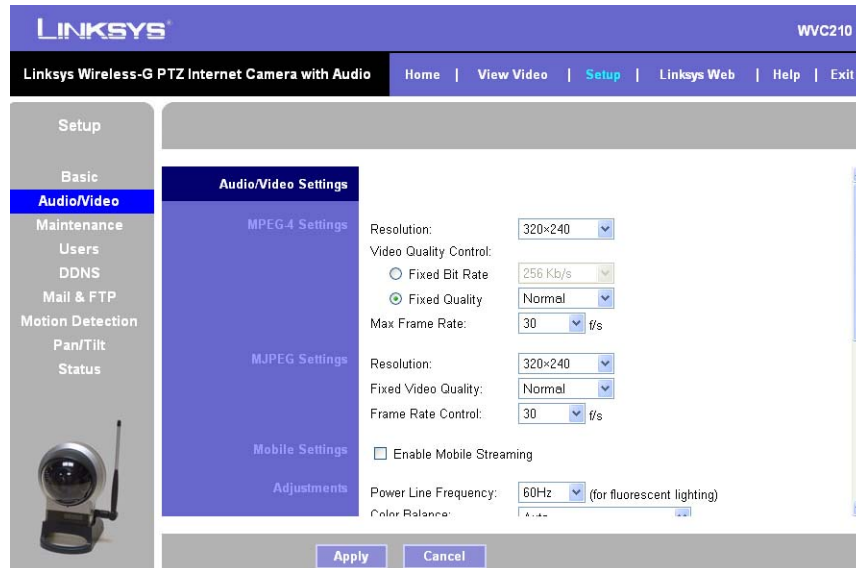


- Click on Save Settings. At this point, to connect to the camera you can type in the IP address of the router, with the port number, for example:

<http://192.168.203.12:1024>

Audio/Video

Clicking on the **Audio/Video** Tab shows the **MPEG-4 Settings**, **MJPEG Settings**, **Mobile Settings**, **Adjustments**, **Video Options**, and **Audio Options** for the camera.



NOTE: Higher video quality settings and higher frame rate settings require more bandwidth.

MPEG-4 Settings

MPEG is the designation for a group of audio and video coding standards and related technology agreed upon by the ISO/IEC. The primary uses for the MPEG-4 standard are web (streaming media) and CD distribution, and broadcast television.

- **Resolution** — Select the desired video resolution setting. The default resolution is set to **320x240**.
- **Video Quality Control** — Choose one of the following:
 - **Fixed Bit Rate** — Select the desired fix bit rate. The default bit rate is set to **256 Kbps**.
 - **Fix Quality** — Select the desired fix quality. The default fix quality is set to **Normal**.
- **Max Frame Rate** — Select the desired maximum frame rate. The default maximum frame rate is set to **30 fps**.

MJPEG Settings

MJPEG (Motion JPEG) is a video codec where each video field (frame) is separately compressed into a JPEG image.

- **Resolution** — Select the desired video resolution format. The default resolution is set to **320x240**.
- **Fixed Video Quality** — Select the desired fix quality. The default fix quality is set to **Normal**.
- **Frame Rate Control** — Select the desired frame rate. The default frame rate is set to **30**.

Mobile Settings

- **Enable Mobile Streaming** — Enable streaming video for the mobile devices by selecting this option.
 - **Resolution** — The default resolution is set to **160x120**.
 - **Video Quality Control** — Choose from one of the following options:
 - **Constant Bit Rate** — Select the desired fix bit rate. The default bit rate is set to **32 Kbps**.
 - **Fix Quality** — Select the desired fix quality. The default fix quality is set to **Normal**.
 - **Max Frame Rate** — Select the desired maximum frame rate. The default maximum frame rate is set to **15 fps**.
 - **Access Code** — Entered at the end of a URL to access the live video from the camera through cell phone connection; for example:

`rtsp://<IP Address>/access_code`

Adjustments

- **Power Line Frequency** — Select the power line frequency (50Hz or 60Hz) used in your region, to improve the picture quality under fluorescent lighting.
- **Color Balance** — Select the suitable white balance option as you desired.
- **Exposure** — If necessary, you can adjust the exposure to obtain a better image. You can select a sharpness value between -3 and 3.
- **Sharpness** — Select the desired option for the sharpness. You can select a sharpness value between -3 and 3.

Video Options

- **Flip Image** — Enable this feature if you want to rotate the image 180° on the vertical axis.
- **Mirror Image** — Enable this feature if you want to rotate the image 180° on the horizontal axis.
- **Enable Time Stamp** — If you want to display a time stamp on the video, enable this feature by checking the check box.
- **Enable Text Display** — If you want to display text on the video, enable this feature by checking the check box. The text can be up to 20 characters in length. This feature is often used to identify the camera location when multiple cameras are installed.

Audio Options

Enable Audio — Enable audio by checking the check box.

Audio Mode Settings	Function
Simplex — Talk Only	Enables the speaker jack
Simplex — Listen Only	Enables the microphone jack
Half Duplex — Talk or Listen (Not simultaneously)	Enables the speaker and microphone jack but only one can be used at a time
Full Duplex — Talk and Listen (Can be simultaneously)	Enables the speaker and microphone jack and both can be used simultaneously

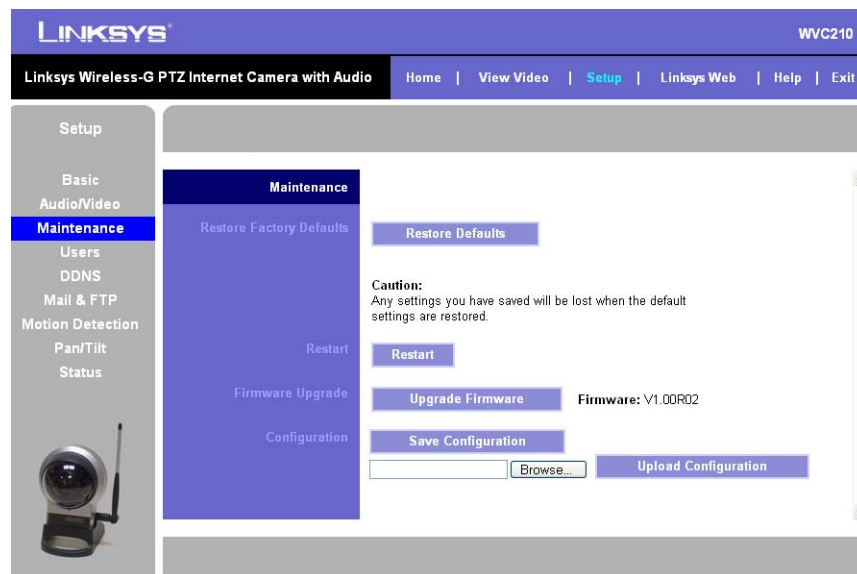
Audio Type — When the microphone is enabled, this drop down menu allows you to select the audio compression type.

Compression Settings	Description
G.726 (WVC200 only)	Default audio compression algorithm, uses 32 Kbps of bandwidth with quality similar to G.711 but using only half of the bandwidth
G.711 A-Law (WVC210 only)	A standard compression algorithm that uses 64 Kbps of bandwidth and is primarily used in Europe
G.711 u-Law (WVC210 only)	A standard compression algorithm that uses 64 Kbps of bandwidth and is primarily used in North America and Japan

Enable Speaker — Check the box to activate an optional external speaker.

Maintenance

Clicking on the Maintenance tab shows options for **Restore Factory Defaults**, **Restart**, **Firmware Upgrade**, and **Configuration**.



Restore Factory Defaults

- **Restore Defaults**— This option restores the camera to the factory default settings.

Restart

- **Restart** — This option restarts the camera.

Firmware Upgrade

Upgrade Firmware — This option is used to update the camera's firmware. This is detailed in Chapter 5.

Configuration

- **Save** — Use this option to save a configuration file containing all of the current camera management settings.
- **Browse** — Use this option to locate a previously saved configuration file.
- **Upload** — Use this button to upload a previously saved configuration file into the camera.

Users

Clicking on the Users tab shows options for **Authentication**, **Administrator**, and **User List**.

User ID	User Name	Password	Confirm Password	Pan/Tilt Setup	
User 1				<input type="checkbox"/> <input type="checkbox"/>	Add
User 2				<input type="checkbox"/> <input type="checkbox"/>	Add
User 3				<input type="checkbox"/> <input type="checkbox"/>	Add
User 4				<input type="checkbox"/> <input type="checkbox"/>	Add
User 5				<input type="checkbox"/> <input type="checkbox"/>	Add
User 6				<input type="checkbox"/> <input type="checkbox"/>	Add
User 7				<input type="checkbox"/> <input type="checkbox"/>	Add

Authentication — Check the box to enable authentication check.

Administrator

- **Admin** — The default administrator name cannot be changed but the password can and should be changed for security purposes. To change the password, enter the desired password in the *Password* and *Confirm Password* fields. Click the **Change** button to apply the change.

User List

- **User ID** — The User ID cannot be modified.

- **User Name** — Enter the desired user name.
- **Password** — Enter the desired password in this field.
- **Confirm Password** — Retype the password in this field.
- **Pan/Tilt** — Click to allow user control PAN and TILT function.
- **Setup** — Click to authorize user control as an administrator.

Click the **Add** button to add or modify a new User ID. Delete a User ID by selecting the User ID fields and backspacing through the information.

DDNS

The **DDNS** tab contains only DDNS Settings.

- **Enable DDNS** — This option will enable Dynamic Domain Name Service (DDNS). When used with a DDNS service provider, you can access your camera over the Internet using a domain name instead of an IP address.
- **Service Provider** — Select the service provider that you have an account with. If you do not have an account, you can select a service provider and click the Web Site button.
- **Host Name** — Enter the host name (Domain Name) allocated to you by the DDNS Server provider.
- **Account** — Enter the login name for the DDNS account.
- **Password** — Enter the password for the DDNS account.

- **Check WAN IP Address** — This option allows you to set how often the device should check to see if the Internet IP address has changed. If the IP address has changed, the DDNS Server will be notified.



NOTE: To complete the DDNS Service setup, port forwarding needs to be configured on your router.

Mail & FTP

Clicking on the **Mail & FTP** Tab shows options for **E-mail Alert** and **FTP Alert**.

E-mail Alert



NOTE: Only one SMTP server is used, even if both the primary and secondary SMTP servers are enabled.

Primary SMTP Server

- **SMTP Mail Server** — Enter the address of the SMTP (Simple Mail Transport Protocol) Server to be used to send e-mail.
- **Port** — Enter the port number for the mail server, the default is **25**.
- **Authentication** — Check the box if your mail server requires authentication and enter the following options:
 - **Account Name**— Enter the account name to be used on the email server.
 - **Password** — Enter the password associated with the account name.

Secondary SMTP

- **Secondary SMTP** — Check the box to upload to the Secondary SMTP if the camera can not connect to the primary SMTP.
- **SMTP Mail Server** — Enter the address of the SMTP (Simple Mail Transport Protocol) Server to be used to send e-mail.
- **Port** — Enter the port number for the mail server, the default is **25**.
- **Authentication** — Check the box if your mail server requires authentication and enter the following options:
 - **Account Name** — Enter the account name to be used on the email server.
 - **Password** — Enter the password associated with the account name.

E-mail Setup

- **Send To** — Enter at least one (1) e-mail address; the 2nd and 3rd addresses are optional. The e-mail alert will be sent to the e-mail address or addresses specified here.
- **Show “From” as** — Enter the e-mail address to be shown in the *From* field when the e-mail is received.
- **Subject** — Enter the desired text to be shown as the subject for the e-mail when it is received

FTP Alert



NOTE: Only one FTP server is used, even if both the primary and secondary FTP servers are enabled.

Primary FTP

- **FTP Server** — Enter the address of the primary FTP Server.
- **Login Name** — Enter the login name associated with the specified primary FTP server.
- **Password** — Enter the password associated with the login name for the primary FTP server.
- **Enable Passive Mode** — Check the box to enable the Passive mode feature. (This is a more secure mode of the ftp protocol)
- **File Path Name** — Enter the desired file path name on the primary FTP server.

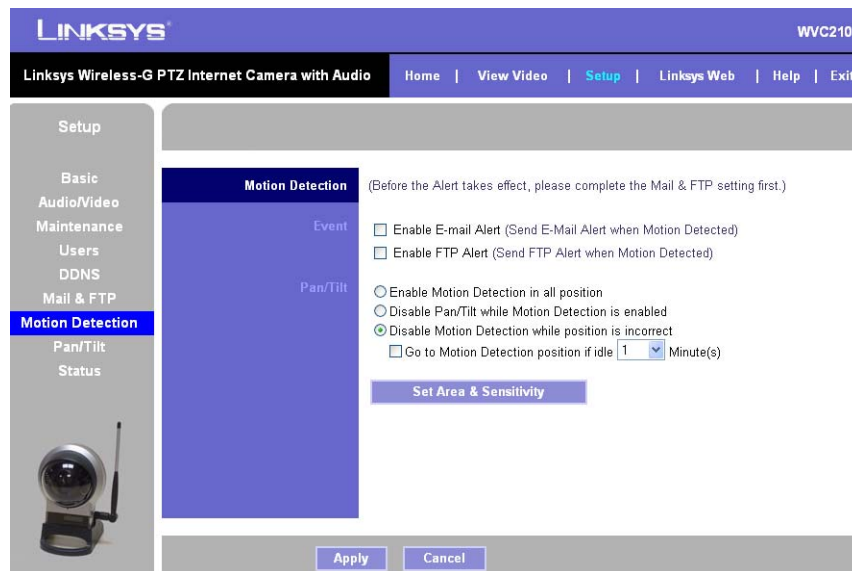
Secondary FTP

- **Secondary FTP** — Enable this option to allow the camera to connect to a secondary FTP server if the primary FTP server is not available

- **FTP Server** — Enter the address of the secondary FTP Server.
- **Login Name** — Enter the login name associated with the secondary FTP server.
- **Password** — Enter the password associated with the login name for the secondary FTP server.
- **Enable Passive Mode** — Check the box to enable the Passive mode feature.
- **File Path Name** — Enter the desired file path name on the secondary FTP server.

Motion Detection

Clicking on the Motion Detection Tab shows options for **Event** and **Pan/Tilt**.



Event



NOTE: Complete the Mail and FTP Setup prior to enabling alerts.

- **Enable E-mail Alert** — If enabled, e-mail alert with attachment are sent when motion is detected.
- **Enable FTP Alert** — If enabled, FTP alert with attachment are sent when motion is detected.

Checking either alert box will display options for the attachment.

- **Interval** — Defaults to 2 minutes before detecting the next event
- **Attachment Type** — JPEG Image or Video

- **Frame Rate**— Defaults to 1 fps
- **Pre-Capture Length** — Defaults to 1 second
- **Post Capture Length** — Defaults to 1 second

Pan/Tilt

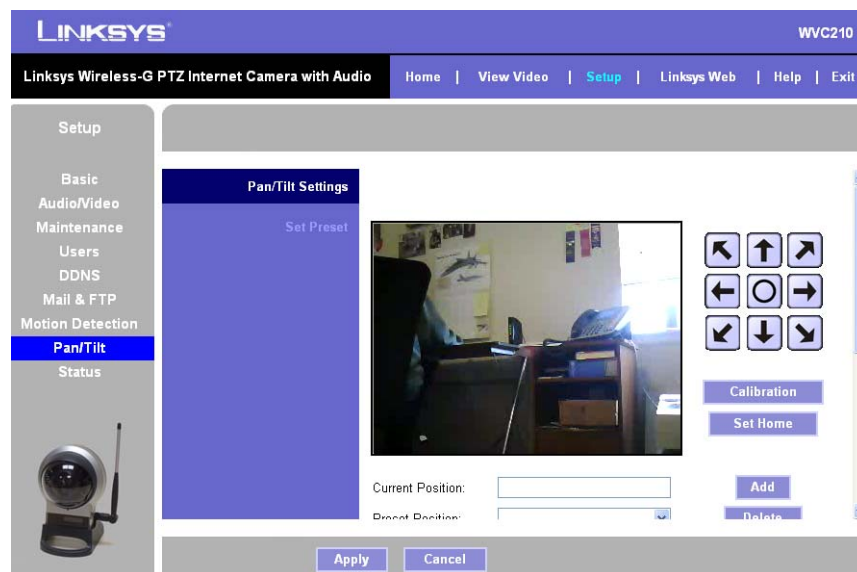
- This option is only available if your camera is fitted with a Pan/Tilt control. If available, select the desired option to resolve conflict between the Pan/Tilt and Motion Detection features.
- Check the box to set the idle time for motion detection position, this defaults to 1 minute.
- **Set Area & Sensitivity** — Click this button to enter the motion detection sub-screen. You can set the area or areas of the video image to be examined, and adjust the sensitivity of detection for each area.



NOTE: Motion detection can be triggered by rapid changes in lighting conditions, as well as by moving objects. For this reason, it should only be used indoors.

Pan/Tilt

Clicking on **Pan/Tilt** shows the **Set Preset**, **Pan/Tilt Control**, and **Rotation Sequence** settings for the camera.



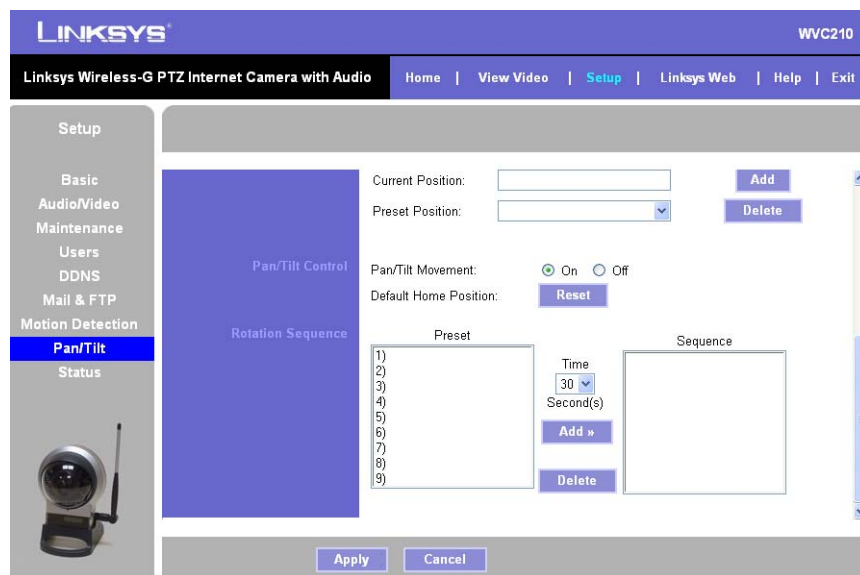
Set Preset

- **Set Positions** — Set the desired position through adjusting the control panel.
- **Calibrate Button** — Click this button to reset the calibration of Pan/Tilt area.

- **Set Home Button**— Set the desired position and then click this button to set Home position.
- **Current Position** — Name the current desired position and then click the **Add** button to add into the preset list.
- **Preset Position**— Select the preset position you don't need and then click the **Delete** button to remove.

Pan/Tilt Control

Pan/Tilt Control and Rotation Sequence are found at the lower part of the scrolling window.



- **Pan/Tilt Movement** — Check **On** if you want to use the Pan/Tilt Movement feature.
- **Default Home Position** — Click this button to reset Default Home Position.

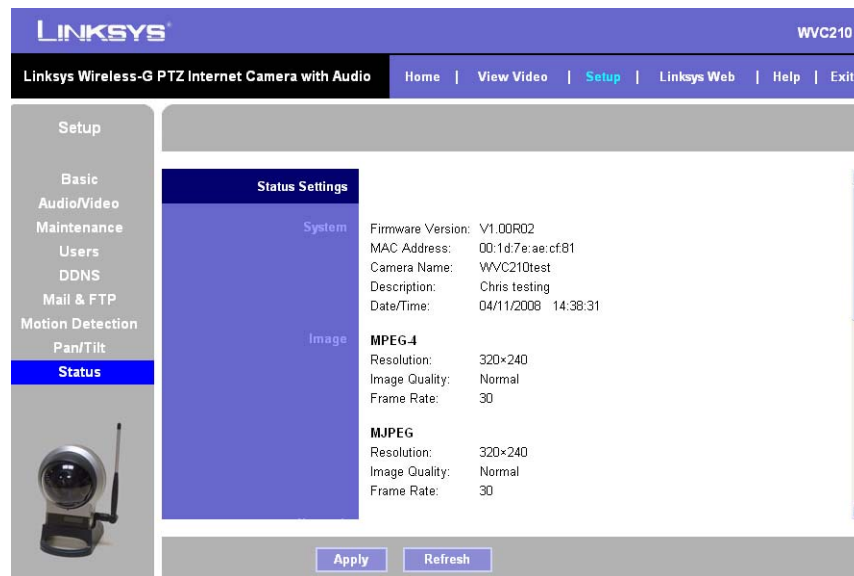
Rotation Sequence

- **Rotation Sequence Windows** — This feature determines how the camera will move when it is set to "Rotate". You can set a number of Preset Positions; the camera will go to the first position, then move through the list of preset positions until it is finished. The camera will stop at the last position in the list.
 - To create the Preset Sequence, select the desired Preset Position in the left column, and click the **Add >>** button. Repeat until the desired sequence is complete. Note that you can add the same Preset Position more than once; this can be used to make the camera stay longer at one position.
 - To delete a position from the Sequence, select the desired position and click the **Delete** button.
- **Time** — This determines how long the camera will stay at each position while executing the sequence. Set this to the desired value.

Status

Clicking on the **Status** Tab shows options for **System, Image, Network, Wireless, Syslog,** and **Log.**

This is a scrolling window, the top half appears as follows:



System

- **Firmware Version** — The version of the firmware currently installed is displayed.
- **MAC Address** — This displays the MAC address of the camera.
- **Camera Name** — This displays the name of the camera, as defined on the *Basic > Device Settings* screen.
- **Description** — This displays the description of the camera, as defined on the *Basic > Device Settings* screen.
- **Date/Time** — This displays the current date/time as configured on the camera.

Image

- **MPEG-4**
 - **Resolution** — This displays the image size of the video stream.
 - **Image Quality** — This displays the image quality of the video stream.
 - **Frame Rate** — This displays the frame rate of the video stream.
- **MJPEG**

- **Resolution** — This displays the image size of the video stream.
- **Image Quality** — This displays the image quality of the video stream.
- **Frame Rate** — This displays the frame rate of the video stream.

Network

The lower part of the scrolling window continues:

The screenshot shows the Linksys WVC210 web interface. The top navigation bar includes 'Home', 'View Video', 'Setup', 'Linksys Web', 'Help', and 'Exit'. The left sidebar lists various setup categories, with 'Status' selected. The main content area is divided into sections: Network, Wireless, Syslog, and Log. The Network section displays the following information:

Network Type:	Ethernet
IP Address:	192.168.128.23
Subnet Mask:	255.255.255.0
Gateway:	192.168.128.1
Primary DNS:	192.168.128.1
Secondary DNS:	

The Wireless section displays the following information:

SSID:	linksys
Channel:	N/A
Security:	Disable
Signal Strength:	N/A

The Syslog section has a checkbox for 'Syslog Server' which is unchecked. The Log section shows a 'System Log' with the following entries:

```

04/11/2008 14:31:27 HTTP: Streaming end (HTTP: 192
04/11/2008 13:52:40 HTTP: Streaming start (HTTP: 1
04/11/2008 13:52:17 HTTP: Streaming end (HTTP: 192
04/11/2008 13:51:15 HTTP: Streaming start (HTTP: 1
04/11/2008 13:49:52 HTTP: Streaming end (HTTP: 192

```

At the bottom of the page, there are 'Apply' and 'Refresh' buttons.

- **Network Type** — This displays the type of network the camera is connected to.
- **IP Address** — This displays the IP address assigned to the camera.
- **Subnet Mask** — This displays the subnet mask assigned to the camera.
- **Gateway** — This displays the IP address of the gateway used by the camera.
- **Primary DNS** — This displays the IP address of the primary Domain Name Server used by the camera.
- **Secondary DNS** — This displays the IP address of the secondary Domain Name Server used by the camera.

Wireless



NOTE: Wireless information is only found on the WVC210 camera.

- **SSID** — This displays the wireless network name (SSID) used by the camera.

- **Channel** — This displays the wireless channel used by the camera.
- **Security** — This indicates if wireless security is being used by the camera.
- **Signal Strength** — This shows the wireless signal strength.

Syslog

- **Syslog Server** — Check this to enable the Syslog server, and then enter the IP address of your Syslog server.

Log

- **System Log** — This displays system activities. Click the Clear Log button to erase all the entries in the System Log.

Linksys Web

This tab opens a browser window and connects you to the Linksys Web-site where you can find information on a number of topics, helpful information, downloads, and several other items.

Exit

Click Exit to leave the camera interface and close the browser window.

Troubleshooting

Questions and Answers

This appendix provides solutions to problems that may occur during the installation and operation of the Wireless-G Internet Camera. Read the description below to solve your problems. If you can't find an answer here, check the Linksys website at www.linksys.com.

I can't connect to the Wireless Network Camera with my Web Browser to configure it.

It is possible that your PC's IP address is not compatible with the IP address of the Wireless Network Camera. Use the Linksys Video Monitoring System to configure the Wireless Network Camera with a valid IP address.

The Linksys Video Monitoring System doesn't list any Wireless Network Cameras.

Check the following:

- The Wireless Network Camera is installed, LAN connections are OK, it is powered ON and startup is complete.
- Ensure that your PC and the Wireless Network Camera are on the same network segment. (If you don't have a router, this could be the case.)
- Ensure that your PC has the TCP/IP network protocol loaded. In Windows, this is done by using Control Panel-Network.

If an entry for TCP/IP -> Network card is not listed, use Add - Protocol - Microsoft - TCP/IP to add it. You then need to select the new entry (TCP/IP -> Network card), click Properties, and configure the IP Address tab. If your LAN has a DHCP Server, you can select "Obtain an IP Address automatically". Otherwise, you must select "Specify an IP Address", and enter values for IP Address, Subnet Mask, and Gateway. All devices on your LAN must use compatible values. Remember that each device needs a unique IP Address, and the same Subnet Mask.

When I try to connect to the Wireless Network Camera, I get prompted for a user name and password.

You should be prompted for a user name and password when you first connect to the camera. Enter the Administrator ID and Password set on the User screen. The Username/Password prompt indicates that the Administrator has restricted access to specified users. Ask the Administrator for your Username and Password. If this has not been set, it should still be the default of *admin/admin*.

I can't connect to the Wireless Network Camera using a Wireless connection.

If a LAN cable is connected to the LAN port, the Wireless interface is disabled. Only one interface can be active. In order to switch from wired to wireless, or wireless to wired, the camera will need to be rebooted to switch modes.

Check that your PC and the Wireless Network Camera have compatible Wireless settings.

- Mode (Infrastructure or Ad-hoc) must be correct.

- SSID must match.
- Wireless security settings must match.
- In Ad-hoc mode, the Channel should match, although this is often not required.

Video quality may suddenly deteriorate.

This can happen when an additional viewer connects to the Wireless Network Camera, overloading the camera or the available bandwidth. The image size and quality can be adjusted to cater for the required number of viewers and the available bandwidth.

The motion detection feature doesn't send me any e-mails.

It may be that the SMTP (Simple Mail Transport Protocol) server used by the camera to send the e-mail will not accept mail. (This is to prevent Spam being sent from the server.). Try using a different SMTP server, or contact your ISP to see if SMTP access is being blocked.

You must use a static IP address (you can copy the DHCP Address), but the DNS server must be that of the ISP and not of the router. You can find this address in the router's status log for WAN IP Address.

Using the motion detection feature, I receive e-mails which don't show any moving objects.

The motion detection feature doesn't actually detect motion. It compares frames to see if they are different. Major differences between frames are assumed to be caused by moving objects.

But the motion detector can also be triggered by sudden changes in the level of available light or movement of the camera itself.

Try to avoid these situations. The motion detection feature works best in locations where there is good steady illumination, and the camera is mounted securely. This feature can NOT be used if the camera is outdoors.

The image is blurry.

Try cleaning the dome, or adjusting the Image Quality setting on the Image screen. Video created with the lower settings will contain less detail; this is the trade-off for using less bandwidth.

Windows Help

Almost all wireless products require Microsoft Windows. Windows is the most used operating system in the world and comes with many features that help make networking easier. These features can be accessed through Windows Help and are described in this appendix.

TCP/IP

Before a computer can communicate with an access point or router, TCP/IP must be enabled. TCP/IP is a set of instructions, or protocol, all PCs follow to communicate over a network. This is true for wireless networks as well. Your PCs will not be able to utilize wireless networking without having TCP/IP enabled. Windows Help provides complete instructions on enabling TCP/IP.

Shared Resources

If you wish to share printers, folders, or files over your network, Windows Help provides complete instructions on using shared resources.

Network Neighborhood/My Network Places

Other PCs on your network will appear under Network Neighborhood or My Network Places (depending upon the version of Windows you're running). Windows Help provides complete instructions on adding PCs to your network.

Glossary

This glossary contains some basic networking terms you may come across when using this product. For more advanced terms, see the complete Linksys glossary at <http://www.linksys.com/glossary>.

Access Point - A device that allows wireless-equipped computers and other devices to communicate with a wired network. Also used to expand the range of a wireless network.

Ad-hoc - A group of wireless devices communicating directly with each other (peer-to-peer) without the use of an access point.

AES (Advanced Encryption Standard) - A security method that uses symmetric 128-bit block data encryption.

Bandwidth - The transmission capacity of a given device or network.

Bit - A binary digit.

Boot - To start a device and cause it to start executing instructions.

Broadband - An always-on, fast Internet connection.

Browser - An application program that provides a way to look at and interact with all the information on the World Wide Web.

Byte - A unit of data that is eight bits long

Cable Modem - A device that connects a computer to the cable television network, which in turn connects to the Internet.

Daisy Chain - A method used to connect devices in a series, one after the other.

DDNS (Dynamic Domain Name System) - Allows the hosting of a website, FTP server, or e-mail server with a fixed domain name (e.g., www.xyz.com) and a dynamic IP address.

Default Gateway - A device that forwards Internet traffic from your local area network.

DHCP (Dynamic Host Configuration Protocol) - A networking protocol that allows administrators to assign temporary IP addresses to network computers by "leasing" an IP address to a user for a limited amount of time, instead of assigning permanent IP addresses.

DMZ (Demilitarized Zone) - Removes the Router's firewall protection from one PC, allowing it to be "seen" from the Internet.

DNS (Domain Name Server) - The IP address of your ISP's server, which translates the names of websites into IP addresses.

Domain - A specific name for a network of computers.

Download - To receive a file transmitted over a network.

DSL (Digital Subscriber Line) - An always-on broadband connection over traditional phone lines.

Dynamic IP Address - A temporary IP address assigned by a DHCP server.

EAP (Extensible Authentication Protocol) - A general authentication protocol used to control network access. Many specific authentication methods work within this framework.

Encryption - Encoding data transmitted in a network.

Ethernet - IEEE standard network protocol that specifies how data is placed on and retrieved from a common transmission medium.

Firewall - A set of related programs located at a network gateway server that protects the resources of a network from users from other networks.

Firmware - The programming code that runs a networking device.

FTP (File Transfer Protocol) - A protocol used to transfer files over a TCP/IP network.

Full Duplex - The ability of a networking device to receive and transmit data simultaneously.

Gateway - A device that interconnects networks with different, incompatible communications protocols.

Half Duplex - Data transmission that can occur in two directions over a single line, but only one direction at a time.

HTTP (HyperText Transport Protocol) - The communications protocol used to connect to servers on the World Wide Web.

Infrastructure - A wireless network that is bridged to a wired network via an access point.

IP (Internet Protocol) - A protocol used to send data over a network.

IP Address - The address used to identify a computer or device on a network.

IPCONFIG - A Windows 2000 and XP utility that displays the IP address for a particular networking device.

IPSec (Internet Protocol Security) - A VPN protocol used to implement secure exchange of packets at the IP layer.

ISP (Internet Service Provider) - A company that provides access to the Internet.

LAN - The computers and networking products that make up your local network.

MAC (Media Access Control) **Address** - The unique address that a manufacturer assigns to each networking device.

Mbps (MegaBits Per Second) - One million bits per second; a unit of measurement for data transmission.

NAT (Network Address Translation) - NAT technology translates IP addresses of a local area network to a different IP address for the Internet.

Network - A series of computers or devices connected for the purpose of data sharing, storage, and/or transmission between users.

Packet - A unit of data sent over a network.

Passphrase - Used much like a password, a passphrase simplifies the WEP encryption process by automatically generating the WEP encryption keys for Linksys products.

Ping (Packet INternet Groper) - An Internet utility used to determine whether a particular IP address is online.

POP3 (Post Office Protocol 3) - A standard mail server commonly used on the Internet.

Port - The connection point on a computer or networking device used for plugging in cables or adapters.

PoE (Power over Ethernet) - A technology enabling an Ethernet network cable to deliver both data and power.

PPPoE (Point to Point Protocol over Ethernet) - A type of broadband connection that provides authentication (username and password) in addition to data transport.

PPTP (Point-to-Point Tunneling Protocol) - A VPN protocol that allows the Point to Point Protocol (PPP) to be tunneled through an IP network. This protocol is also used as a type of broadband connection in Europe.

RADIUS (Remote Authentication Dial-In User Service) - A protocol that uses an authentication server to control network access.

RJ-45 (Registered Jack-45) - An Ethernet connector that holds up to eight wires.

Roaming - The ability to take a wireless device from one access point's range to another without losing the connection.

Router - A networking device that connects multiple networks together.

Server - Any computer whose function in a network is to provide user access to files, printing, communications, and other services.

SMTP (Simple Mail Transfer Protocol) - The standard e-mail protocol on the Internet.

SNMP (Simple Network Management Protocol) - A widely used network monitoring and control protocol.

SPI (Stateful Packet Inspection) **Firewall** - A technology that inspects incoming packets of information before allowing them to enter the network.

SSID (Service Set IDentifier) - Your wireless network's name.

Static IP Address - A fixed address assigned to a computer or device that is connected to a network.

Static Routing - Forwarding data in a network via a fixed path.

Subnet Mask - An address code that determines the size of the network.

Switch - 1. A data switch that connects computing devices to host computers, allowing a large number of devices to share a limited number of ports. 2. A device for making, breaking, or changing the connections in an electrical circuit.

TCP (Transmission Control Protocol) - A network protocol for transmitting data that requires acknowledgement from the recipient of data sent.

TCP/IP (Transmission Control Protocol/Internet Protocol) - A set of instructions PCs use to communicate over a network.

Telnet - A user command and TCP/IP protocol used for accessing remote PCs.

TFTP (Trivial File Transfer Protocol) - A version of the TCP/IP FTP protocol that has no directory or password capability.

Throughput - The amount of data moved successfully from one node to another in a given time period.

TKIP (Temporal Key Integrity Protocol) - a wireless encryption protocol that provides dynamic encryption keys for each packet transmitted.

Topology - The physical layout of a network.

TX Rate - Transmission Rate.

Upgrade - To replace existing software or firmware with a newer version.

Upload - To transmit a file over a network.

UPnP - Universal Plug and Play is a series of protocols to allow devices to connect seamlessly and to simplify the implementation of networks in the home and corporate environments.

URL (Uniform Resource Locator) - The address of a file located on the Internet.

VPN (Virtual Private Network) - A security measure to protect data as it leaves one network and goes to another over the Internet.

WAN (Wide Area Network)- The Internet.

WEP (Wired Equivalent Privacy) - A method of encrypting network data transmitted on a wireless network for greater security.

WLAN (Wireless Local Area Network) - A group of computers and associated devices that communicate with each other wirelessly.

WPA (Wi-Fi Protected Access) - a wireless security protocol using TKIP (Temporal Key Integrity Protocol) encryption, which can be used in conjunction with a RADIUS server.

Specifications

WVC200

Standards	IEEE 802.11g, IEEE 802.11b, IEEE 802.3, IEEE 802.3u, IEEE 802.11e (Wireless QoS)
Ports	Ethernet, Antenna, Microphone, Power
Protocols	TCP/IP, HTTP, DHCP, SMTP, FTP, NTP, DNS, UPnP and DDNS
Button	One Reset Button
Cabling	UTP CAT 5
LEDs	Power, Activity, Ethernet, Wireless
Sensor	1/5" CMOS
Focal Length	500mm~Infinity
Frame Rate	Up to 30 fps
Resolution	640x480, 320x240, 160x120
Illumination	2LUX@F2.0
Field of View	60 degrees
Auto Patrol	9 Definable Preset Points by User
Pan	± 67 degrees
Tilt	-34 degrees (down) to +30 degrees (up)
Web UI	Built in Web UI for Easy Browser-Based Configuration (HTTP)
Web Browser	Internet Explorer 5.x, or Above
Event Logging	Event Logging Yes
Upgrade	Firmware Upgradable Through Web-Browser
Dual Codec	MPEG-4 Simple Profile, MJPEG
Snapshot	JPEG
Image Position	Flip and Mirror
Image Settings	Brightness and Contrast
Night Vision	Dual band filter for low light
Motion Detection	Send Video Clip to an email address on motion detection

Compression	G.726
Sampling Rate	8 KHz
Dual Bit Rate	16Kbps
Brightness	Auto/Manual Adjustment
Monitor and Recording Software	Included software for multiple camera monitoring and recording to your hard drive with advanced search by time and date.
WEP/WPA	WEP 64bit/128bit, WPA-TKIP, WPA-PSK
User List	User Rights List to View Video and/or to Camera Control Functions
Username/ Password	Logon authentication 20 characters username and 8 characters password
NTP	Network Time Protocol Support
SMTP	Simple Mail Transfer Protocol Client allows video clips to be emailed
FTP Client	FTP Client facilitates scheduling transfer of images to an FTP server
DDNS	Dynamic DNS facilitates reaching the camera by a name irrespective of what the IP address is. FreeDNS, DynDNs, 3322, and TZO is supported.
UPnP	Allows autodiscovery of the camera by other UPnP devices
Dimensions	1.26" x 7.83" x 6.89" (W x H x D)(32 mm x 199 mm x 175 mm)
Unit Weight	1.01 lbs. (0.46 kg)
Power	5VDC, 2.5A Switching Power Supply
Certifications	FCC, CE and UL
Operating Temp	0 °C to 40 °C (-32 °F to 104 °F)
Storage Temp	-20 °C to 70 °C (-4 °F to 140 °F)
Operating Humidity	10% to 80%, Non-Condensing
Storage Humidity	0% to 90%, Non-Condensing

WVC210

Standards	IEEE802.11g, IEEE802.11b, IEEE802.3, IEEE802.3u, IEEE802.1p (QoS Priority), IEEE802.1q (VLAN), 802.11e (Wireless QoS)
Ports	Ethernet, Antenna, Microphone in, Speaker Out, Power
Protocols	TCP/IP, HTTP, DHCP, SMTP, FTP, NTP, DNS, UPnP, RTP, RTSP, and DDNS
Button	One Reset Button
Cabling	UTP CAT 5
LEDs	Power, Activity, Ethernet, Wireless
Sensor	1/4" CMOS
Focal Length	500mm~Infinity
Frame Rate	Up to 30 fps
Resolution	640x480, 320x240, 160x120
Illumination	1LUX@F2.0
Field of View	60 degrees
Auto Patrol	9 Definable Preset Points by User
Pan	± 67 degrees
Tilt	-34 degrees (down) to +30 degrees (up)
Web UI	Built in Web UI for Easy Browser-Based Configuration (HTTP)
Web Browser	Internet Explorer 5.x or above with ActiveX support for viewing, recording, playback and setting motion detection; limited support for Safari and Mozilla Firefox (no motion detection)
Logging	Event Logging (SYSLOG)
Upgrades	Firmware Upgradable Through Web-Browser
Dual Streaming Codecs	MPEG-4 Simple Profile, MJPEG
Snapshot	JPEG
Image Position	Flip and Mirror
Image Settings	Brightness and Contrast
Motion Detection	4 detection areas with individual sensitivity thresholds; triggers alerts
Compression	G.711 A-law and i-law

Sampling Rate	8 KHz
Dual Bit Rate	16Kbps
Image Settings	Brightness and Contrast
Monitor and Recording Software	Monitoring and recording for up to 16 cameras Monitor live video, record, and play back simultaneously
WEP/WPA	WEP 64bit/128bit, WPA-TKIP, WPA-PSK, WPA2-PSK
User List	Three-level user rights list to view video and to control camera
Username/ Password	Logon authentication 20 characters username and 8 characters password
Physical security option	Kensington lock
NTP	Network Time Protocol synchronizes camera date and time with your network
SMTP	Simple Mail Transfer Protocol Client allows video clips to be emailed
FTP Client	FTP Client facilitates scheduling transfer of images to an FTP server
DDNS	Dynamic DNS facilitates accessing the camera by name, irrespective of the camera IP address
UPnP	Allows auto-discovery of the camera by other UPnP devices
Dimensions	1.26" x 7.83" x 6.89" (32 x 199 x 175 mm)
Unit Weight	1.01 lb. (.46 kg)
Power	5DVC 2.0A Switching Power Supply
Certifications	Wi-Fi, FCC, CE and UL
Operating Temp	-32 to 113°F (0 to 45°C)
Storage Temp	-4 to 140°F (-20 to 70°C)
Operating Humidity	10 to 80%, Non-condensing
Storage Humidity	0 to 90%, Non-condensing

Regulatory Information

FCC Statement

This equipment has been tested and found to comply with the limits for a Class B digital device, pursuant to Part 15 of the FCC Rules. These limits are designed to provide reasonable protection against harmful interference in a residential installation. This equipment generates, uses and can radiate radio frequency energy and, if not installed and used in accordance with the instructions, may cause harmful interference to radio communications. However, there is no guarantee that interference will not occur in a particular installation. If this equipment does cause harmful interference to radio or television reception, which can be determined by turning the equipment off and on, the user is encouraged to try to correct the interference by one of the following measures:

- Reorient or relocate the receiving antenna.
- Increase the separation between the equipment and receiver.
- Connect the equipment into an outlet on a circuit different from that to which the receiver is connected.
- Consult the dealer or an experienced radio/TV technician for help.

This device complies with Part 15 of the FCC Rules. Operation is subject to the following two conditions: (1) This device may not cause harmful interference, and (2) this device must accept any interference received, including interference that may cause undesired operation.

FCC Caution

Any changes or modifications not expressly approved by the party responsible for compliance could void the user's authority to operate this equipment.

FCC Radiation Exposure Statement

This equipment complies with FCC radiation exposure limits set forth for an uncontrolled environment. This equipment should be installed and operated with minimum distance 20cm between the radiator & your body. To maintain compliance with FCC RF exposure compliance requirements, please avoid direct contact to the transmitting antenna during transmitting.

This transmitter must not be co-located or operating in conjunction with any other antenna or transmitter.

We declare that the product is limited in CH1~CH11 by specified firmware controlled in the USA.

Safety Notices

Do not use this product near water, for example, in a wet basement or near a swimming pool.

Avoid using this product during an electrical storm. There may be a remote risk of electric shock from lightning.

Industry Canada (Canada)

Operation is subject to the following two conditions:

1. This device may not cause interference and
2. This device must accept any interference, including interference that may cause undesired operation of the device.

This device has been designed to operate with an antenna having a maximum gain of 3.3 dBi. Antenna having a higher gain is strictly prohibited per regulations of Industry Canada. The required antenna impedance is 50 ohms.

This device complies with Canadian ICES-003 and RSS210 rules.

Cet appareil est conforme aux normes NMB-003 et RSS210 d'Industry Canada.

User Information for Consumer Products Covered by EU Directive 2002/96/EC on Waste Electric and Electronic Equipment (WEEE)



WARNING: Risk of explosion if battery is replaced by an incorrect type. Dispose of used batteries according to the instructions.

This document contains important information for users with regards to the proper disposal and recycling of Linksys products. Consumers are required to comply with this notice for all electronic products bearing the following symbol:



English**Environmental Information for Customers in the European Union**

European Directive 2002/96/EC requires that the equipment bearing this symbol on the product and/or its packaging must not be disposed of with unsorted municipal waste. The symbol indicates that this product should be disposed of separately from regular household waste streams. It is your responsibility to dispose of this and other electric and electronic equipment via designated collection facilities appointed by the government or local authorities. Correct disposal and recycling will help prevent potential negative consequences to the environment and human health. For more detailed information about the disposal of your old equipment, please contact your local authorities, waste disposal service, or the shop where you purchased the product.

Ceština/Czech**Informace o ochraně životního prostředí pro zákazníky v zemích Evropské unie**

Evropská směrnice 2002/96/ES zakazuje, aby zařízení označené tímto symbolem na produktu anebo na obalu bylo likvidováno s netříděným komunálním odpadem. Tento symbol udává, že daný produkt musí být likvidován odděleně od běžného komunálního odpadu. Odpovídáte za likvidaci tohoto produktu a dalších elektrických a elektronických zařízení prostřednictvím určených sběrných míst stanovených vládou nebo místními úřady. Správná likvidace a recyklace pomáhá předcházet potenciálním negativním dopadům na životní prostředí a lidské zdraví. Podrobnější informace o likvidaci starého vybavení si laskavě vyžádejte od místních úřadů, podniku zabývajícího se likvidací komunálních odpadů nebo obchodu, kde jste produkt zakoupili.

Dansk/Danish**Miljøinformation for kunder i EU**

EU-direktiv 2002/96/EF kræver, at udstyr der bærer dette symbol på produktet og/eller emballagen ikke må bortskaffes som usorteret kommunalt affald. Symbolet betyder, at dette produkt skal bortskaffes adskilt fra det almindelige husholdningsaffald. Det er dit ansvar at bortskaffe dette og andet elektrisk og elektronisk udstyr via bestemte indsamlingssteder udpeget af staten eller de lokale myndigheder. Korrekt bortskaffelse og genvinding vil hjælpe med til at undgå mulige skader for miljøet og menneskers sundhed. Kontakt venligst de lokale myndigheder, renovationstjenesten eller den butik, hvor du har købt produktet, angående mere detaljeret information om bortskaffelse af dit gamle udstyr.

Nederlands/Dutch**Milieu-informatie voor klanten in de Europese Unie**

De Europese Richtlijn 2002/96/EC schrijft voor dat apparatuur die is voorzien van dit symbool op het product of de verpakking, niet mag worden ingezameld met niet-gescheiden huishoudelijk afval. Dit symbool geeft aan dat het product apart moet worden ingezameld. U bent zelf verantwoordelijk voor de vernietiging van deze en andere elektrische en elektronische apparatuur via de daarvoor door de landelijke of plaatselijke overheid aangewezen inzamelingskanalen. De juiste vernietiging en recycling van deze apparatuur voorkomt mogelijke negatieve gevolgen voor het milieu en de gezondheid. Voor meer informatie over het vernietigen van uw oude apparatuur neemt u contact op met de plaatselijke autoriteiten of afvalverwerkingsdienst, of met de winkel waar u het product hebt aangeschaft.

Eesti/Estonian**Keskkonnaalane informatsioon Euroopa Liidus asuvatele klientidele**

Euroopa Liidu direktiivi 2002/96/EÜ nõuete kohaselt on seadmeid, millel on tootel või pakendil käesolev sümbol, keelatud kõrvaldada koos sorteerimata olmejäätmetega. See sümbol näitab, et toode tuleks kõrvaldada eraldi tavalistest olmejäätmevoogudest. Olete kohustatud kõrvaldama käesoleva ja ka muud elektri- ja elektroonikaseadmed riigi või kohalike ametiasutuste poolt ette nähtud kogumispunktide kaudu. Seadmete korrektne kõrvaldamine ja ringlussevõtt aitab vältida võimalikke negatiivseid tagajärgi keskkonnale ning inimeste tervisele. Vanade seadmete kõrvaldamise kohta täpsema informatsiooni saamiseks võtke palun ühendust kohalike ametiasutustega, jäätmekäitlusfirmaga või kauplusega, kust te toote ostsite.

Suomi/Finnish**Ympäristöä koskevia tietoja EU-alueen asiakkaille**

EU-direktiivi 2002/96/EY edellyttää, että jos laitteistossa on tämä symboli itse tuotteessa ja/tai sen pakkauksessa, laitteistoa ei saa hävittää lajittelemattoman yhdyskuntajätteen mukana. Symboli merkitsee sitä, että tämä tuote on hävitettävä erillään tavallisesta kotitalousjätteestä. Sinun vastuullasi on hävittää tämä elektroniikkatuote ja muut vastaavat elektroniikkatuotteet viemällä tuote tai tuotteet viranomaisten määräämään keräyspisteeseen. Laitteiston oikea hävittäminen estää mahdolliset kielteiset vaikutukset ympäristöön ja ihmisten terveyteen. Lisätietoja vanhan laitteiston oikeasta hävitystavasta saa paikallisilta viranomaisilta, jätteenhävityspalvelusta tai siitä myymälästä, josta ostit tuotteen.

Français/French**Informations environnementales pour les clients de l'Union européenne**

La directive européenne 2002/96/CE exige que l'équipement sur lequel est apposé ce symbole sur le produit et/ou son emballage ne soit pas jeté avec les autres ordures ménagères. Ce symbole indique que le produit doit être éliminé dans un circuit distinct de celui pour les déchets des ménages. Il est de votre responsabilité de jeter ce matériel ainsi que tout autre matériel électrique ou électronique par les moyens de collecte indiqués par le gouvernement et les pouvoirs publics des collectivités territoriales. L'élimination et le recyclage en bonne et due forme ont pour but de lutter contre l'impact néfaste potentiel de ce type de produits sur l'environnement et la santé publique. Pour plus d'informations sur le mode d'élimination de votre ancien équipement, veuillez prendre contact avec les pouvoirs publics locaux, le service de traitement des déchets, ou l'endroit où vous avez acheté le produit.

Deutsch/German**Umweltinformation für Kunden innerhalb der Europäischen Union**

Die Europäische Richtlinie 2002/96/EC verlangt, dass technische Ausrüstung, die direkt am Gerät und/oder an der Verpackung mit diesem Symbol versehen ist nicht zusammen mit unsortiertem Gemeindeabfall entsorgt werden darf. Das Symbol weist darauf hin, dass das Produkt von regulärem Haushaltsmüll getrennt entsorgt werden sollte. Es liegt in Ihrer Verantwortung, dieses Gerät und andere elektrische und elektronische Geräte über die dafür zuständigen und von der Regierung oder örtlichen Behörden dazu bestimmten Sammelstellen zu entsorgen. Ordnungsgemäßes Entsorgen und Recyceln trägt dazu bei, potentielle negative Folgen für Umwelt und die menschliche Gesundheit zu vermeiden. Wenn Sie weitere Informationen zur Entsorgung Ihrer Altgeräte benötigen, wenden Sie sich bitte an die örtlichen Behörden oder städtischen Entsorgungsdienste oder an den Händler, bei dem Sie das Produkt erworben haben.

Ελληνικά/Greek**Στοιχεία περιβαλλοντικής προστασίας για πελάτες εντός της Ευρωπαϊκής Ένωσης**

Η Κοινοτική Οδηγία 2002/96/EC απαιτεί ότι ο εξοπλισμός ο οποίος φέρει αυτό το σύμβολο στο προϊόν και/ή στη συσκευασία του δεν πρέπει να απορρίπτεται μαζί με τα μικτά κοινοτικά απορρίμματα. Το σύμβολο υποδεικνύει ότι αυτό το προϊόν θα πρέπει να απορρίπτεται ξεχωριστά από τα συνήθη οικιακά απορρίμματα. Είστε υπεύθυνος για την απόρριψη του παρόντος και άλλου ηλεκτρικού και ηλεκτρονικού εξοπλισμού μέσω των καθορισμένων εγκαταστάσεων συγκέντρωσης απορριμμάτων οι οποίες παρέχονται από το κράτος ή τις αρμόδιες τοπικές αρχές. Η σωστή απόρριψη και ανακύκλωση συμβάλλει στην πρόληψη πιθανών αρνητικών συνεπειών για το περιβάλλον και την υγεία. Για περισσότερες πληροφορίες σχετικά με την απόρριψη του παλιού σας εξοπλισμού, παρακαλώ επικοινωνήστε με τις τοπικές αρχές, τις υπηρεσίες απόρριψης ή το κατάστημα από το οποίο αγοράσατε το προϊόν.

Magyar/Hungarian**Környezetvédelmi információ az európai uniós vásárlók számára**

A 2002/96/EC számú európai uniós irányelv megkívánja, hogy azokat a termékeket, amelyeken, és/vagy amelyek csomagolásán az alábbi címke megjelenik, tilos a többi szelektálatlan lakossági hulladékkal együtt kidobni. A címke azt jelöli, hogy az adott termék kidobásakor a szokványos háztartási hulladékelszállítási rendszerektől elkülönített eljárást kell alkalmazni. Az Ön felelőssége, hogy ezt, és más elektromos és elektronikus berendezéseit a kormányzati vagy a helyi hatóságok által kijelölt gyűjtőrendszereken keresztül számolja fel. A megfelelő hulladékfeldolgozás segít a környezetre és az emberi egészségre potenciálisan ártalmas negatív hatások megelőzésében. Ha elavult berendezéseinek felszámolásához további részletes információra van szüksége, kérjük, lépjen kapcsolatba a helyi hatóságokkal, a hulladékfeldolgozási szolgálattal, vagy azzal üzlettel, ahol a terméket vásárolta.

Italiano/Italian**Informazioni relative all'ambiente per i clienti residenti nell'Unione Europea**

La direttiva europea 2002/96/EC richiede che le apparecchiature contrassegnate con questo simbolo sul prodotto e/o sull'imballaggio non siano smaltite insieme ai rifiuti urbani non differenziati. Il simbolo indica che questo prodotto non deve essere smaltito insieme ai normali rifiuti domestici. È responsabilità del proprietario smaltire sia questi prodotti sia le altre apparecchiature elettriche ed elettroniche mediante le specifiche strutture di raccolta indicate dal governo o dagli enti pubblici locali. Il corretto smaltimento ed il riciclaggio aiuteranno a prevenire conseguenze potenzialmente negative per l'ambiente e per la salute dell'essere umano. Per ricevere informazioni più dettagliate circa lo smaltimento delle vecchie apparecchiature in Vostro possesso, Vi invitiamo a contattare gli enti pubblici di competenza, il servizio di smaltimento rifiuti o il negozio nel quale avete acquistato il prodotto.

Latviešu valoda/Latvian**Ekoloģiska informācija klientiem Eiropas Savienības jurisdikcijā**

Direktīvā 2002/96/EK ir prasība, ka aprīkojumu, kam pievienota zīme uz paša izstrādājuma vai uz tā iesaiņojuma, nedrīkst izmest nešķīrotā veidā kopā ar komunālajiem atkritumiem (tiem, ko rada vietēji iedzīvotāji un uzņēmumi). Šī zīme nozīmē to, ka šī ierīce ir jāizmet atkritumos tā, lai tā nenonāktu kopā ar parastiem mājāsaimniecības atkritumiem. Jūsu pienākums ir šo un citas elektriskas un elektroniskas ierīces izmest atkritumos, izmantojot īpašus atkritumu savākšanas veidus un līdzekļus, ko nodrošina valsts un pašvaldību iestādes. Ja izmešana atkritumos un pārstrāde tiek veikta pareizi, tad mazinās iespējamais kaitējums dabai un cilvēku veselībai. Sīkākas ziņas par novecojuša aprīkojuma izmešanu atkritumos jūs varat saņemt vietējā pašvaldībā, atkritumu savākšanas dienestā, kā arī veikalā, kur iegādājāties šo izstrādājumu.

Lietuvškai/Lithuanian**Aplinkosaugos informacija, skirta Europos Sąjungos vartotojams**

Europos direktyva 2002/96/EC numato, kad įrangos, kuri ir (arba) kurios pakuotė yra pažymėta šiuo simboliu, negalima šalinti kartu su nerūšiuotomis komunalinėmis atliekomis. Šis simbolis rodo, kad gaminį reikia šalinti atskirai nuo bendro buitinių atliekų srauto. Jūs privalote užtikrinti, kad ši ir kita elektros ar elektroninė įranga būtų šalinama per tam tikras nacionalinės ar vietinės valdžios nustatytas atliekų rinkimo sistemas. Tinkamai šalinant ir perdurbant atliekas, bus išvengta galimos žalos aplinkai ir žmonių sveikatai. Daugiau informacijos apie jūsų senos įrangos šalinimą gali pateikti vietinės valdžios institucijos, atliekų šalinimo tarnybos arba parduotuvės, kuriose įsigijote tą gaminį.

Malti/Maltese**Informazzjoni Ambjentali għal Kliġenti fl-Unjoni Ewropea**

Id-Direttiva Ewropea 2002/96/KE titlob li t-tagħmir li jkun fih is-simbolu fuq il-prodott u/jew fuq l-ippakkjar ma jistax jintrema ma' skart muniċipali li ma għiex isseparat. Is-simbolu jindika li dan il-prodott għandu jintrema separatament minn ma' l-iskart domestiku regolari. Hija responsabbiltà tiegħek li tarmi dan it-tagħmir u kull tagħmir ieħor ta' l-elettriku u elettroniku permezz ta' faċilitajiet ta' għir appuntati apposta mill-gvern jew mill-awtoritajiet lokali. Ir-rimi b'mod korrett u r-riciklagg jgħin jipprevjeni konsegwenzi negattivi potenzjali għall-ambjent u għas-saħħa tal-bniedem. Għal aktar informazzjoni dettaljata dwar ir-rimi tat-tagħmir antik tiegħek, jekk jogħġbok ikkuntattja lill-awtoritajiet lokali tiegħek, is-servizzi għar-rimi ta' l-iskart, jew il-hanut minn fejn xtrajt il-prodott.

Norsk/Norwegian**Miljøinformasjon for kunder i EU**

EU-direktiv 2002/96/EF krever at utstyr med følgende symbol avbildet på produktet og/eller pakningen, ikke må kastes sammen med usortert avfall. Symbolet indikerer at dette produktet skal håndteres atskilt fra ordinær avfallsinnsamling for husholdningsavfall. Det er ditt ansvar å kvitte deg med dette produktet og annet elektrisk og elektronisk avfall via egne innsamlingsordninger slik myndighetene eller kommunene bestemmer. Korrekt avfallshåndtering og gjenvinning vil være med på å forhindre mulige negative konsekvenser for miljø og helse. For nærmere informasjon om håndtering av det kasserte utstyret ditt, kan du ta kontakt med kommunen, en innsamlingsstasjon for avfall eller butikken der du kjøpte produktet.

Polski/Polish**Informacja dla klientów w Unii Europejskiej o przepisach dotyczących ochrony środowiska**

Dyrektywa Europejska 2002/96/EC wymaga, aby sprzęt oznaczony symbolem znajdującym się na produkcie i/lub jego opakowaniu nie był wyrzucany razem z innymi niesortowanymi odpadami komunalnymi. Symbol ten wskazuje, że produkt nie powinien być usuwany razem ze zwykłymi odpadami z gospodarstw domowych. Na Państwu spoczywa obowiązek wyrzucania tego i innych urządzeń elektrycznych oraz elektronicznych w punktach odbioru wyznaczonych przez władze krajowe lub lokalne. Pozbywanie się sprzętu we właściwy sposób i jego recykling pomogą zapobiec potencjalnie negatywnym konsekwencjom dla środowiska i zdrowia ludzkiego. W celu uzyskania szczegółowych informacji o usuwaniu starego sprzętu, prosimy zwrócić się do lokalnych władz, służb oczyszczania miasta lub sklepu, w którym produkt został nabyty.

Português/Portuguese**Informação ambiental para clientes da União Europeia**

A Directiva Europeia 2002/96/CE exige que o equipamento que exhibe este símbolo no produto e/ou na sua embalagem não seja eliminado junto com os resíduos municipais não separados. O símbolo indica que este produto deve ser eliminado separadamente dos resíduos domésticos regulares. É da sua responsabilidade eliminar este e qualquer outro equipamento eléctrico e electrónico através das instalações de recolha designadas pelas autoridades governamentais ou locais. A eliminação e reciclagem correctas ajudarão a prevenir as consequências negativas para o ambiente e para a saúde humana. Para obter informações mais detalhadas sobre a forma de eliminar o seu equipamento antigo, contacte as autoridades locais, os serviços de eliminação de resíduos ou o estabelecimento comercial onde adquiriu o produto.

Slovenčina/Slovak**Informácie o ochrane životného prostredia pre zákazníkov v Európskej únii**

Podľa európskej smernice 2002/96/ES zariadenie s týmto symbolom na produkte a/alebo jeho balení nesmie byť likvidované spolu s netriedeným komunálnym odpadom. Symbol znamená, že produkt by sa mal likvidovať oddelene od bežného odpadu z domácností. Je vašou povinnosťou likvidovať toto i ostatné elektrické a elektronické zariadenia prostredníctvom špecializovaných zberných zariadení určených vládou alebo miestnymi orgánmi. Správna likvidácia a recyklácia pomôže zabrániť prípadným negatívnym dopadom na životné prostredie a zdravie ľudí. Ak máte záujem o podrobnejšie informácie o likvidácii starého zariadenia, obráťte sa, prosím, na miestne orgány, organizácie zaoberajúce sa likvidáciou odpadov alebo obchod, v ktorom ste si produkt zakúpili.

Slovenčina/Slovene**Okoljske informacije za stranke v Evropski uniji**

Evropska direktiva 2002/96/EC prepoveduje odlaganje opreme, označene s tem simbolom – na izdelku in/ali na embalaži – med običajne, nerazvrščene odpadke. Ta simbol opozarja, da je treba izdelek odvreči ločeno od preostalih gospodinjskih odpadkov. Vaša odgovornost je, da to in preostalo električno in elektronsko opremo odnesete na posebna zbirališča, ki jih določijo državne ustanove ali lokalna uprava. S pravilnim odlaganjem in recikliranjem boste preprečili morebitne škodljive vplive na okolje in zdravje ljudi. Če želite izvedeti več o odlaganju stare opreme, se obrnite na lokalno upravo, odpad ali trgovino, kjer ste izdelek kupili.

Español/Spanish**Información medioambiental para clientes de la Unión Europea**

La Directiva 2002/96/CE de la UE exige que los equipos que lleven este símbolo en el propio aparato y/o en su embalaje no deben eliminarse junto con otros residuos urbanos no seleccionados. El símbolo indica que el producto en cuestión debe separarse de los residuos domésticos convencionales con vistas a su eliminación. Es responsabilidad suya desechar este y cualesquiera otros aparatos eléctricos y electrónicos a través de los puntos de recogida que ponen a su disposición el gobierno y las autoridades locales. Al desechar y reciclar correctamente estos aparatos estará contribuyendo a evitar posibles consecuencias negativas para el medio ambiente y la salud de las personas. Si desea obtener información más detallada sobre la eliminación segura de su aparato usado, consulte a las autoridades locales, al servicio de recogida y eliminación de residuos de su zona o pregunte en la tienda donde adquirió el producto.

Svenska/Swedish**Miljöinformation för kunder i Europeiska unionen**

Det europeiska direktivet 2002/96/EC kräver att utrustning med denna symbol på produkten och/eller förpackningen inte får kastas med osorterat kommunalt avfall. Symbolen visar att denna produkt bör kastas efter att den avskiljts från vanligt hushållsavfall. Det faller på ditt ansvar att kasta denna och annan elektrisk och elektronisk utrustning på fastställda insamlingsplatser utsedda av regeringen eller lokala myndigheter. Korrekt kassering och återvinning skyddar mot eventuella negativa konsekvenser för miljön och personhälsa. För mer detaljerad information om kassering av din gamla utrustning kontaktar du dina lokala myndigheter, avfallshanteringen eller butiken där du köpte produkten.

For more information, visit www.linksys.com.

Contact Information

Need to contact Linksys?

For additional information or troubleshooting help, refer to the User Guide on the CD-ROM. Additional support is also available by phone or online.

US/Canada Contacts

- 24-Hour Technical Support: 866-606-1866
- RMA (Return Merchandise Authorization): <http://www.linksys.com/warranty>
- Website: <http://www.linksys.com>
- FTP Site: <ftp://ftp.linksys.com>
- Support: <http://www.linksys.com/support>
- Sales Information: 800-546-5797 (800-LINKSYS)

EU Contacts

- Website: <http://www.linksys.com/international>
- Product Registration: <http://www.linksys.com/registration>

Warranty Information

LIMITED WARRANTY

Linksys warrants this Linksys hardware product against defects in materials and workmanship under normal use for the Warranty Period, which begins on the date of purchase by the original end-user purchaser and lasts for the period specified for this product at www.linksys.com/warranty. The internet URL address and the web pages referred to herein may be updated by Linksys from time to time; the version in effect at the date of purchase shall apply.

This limited warranty is non-transferable and extends only to the original end-user purchaser. Your exclusive remedy and Linksys entire liability under this limited warranty will be for Linksys, at its option, to (a) repair the product with new or refurbished parts, (b) replace the product with a reasonably available equivalent new or refurbished Linksys product, or (c) refund the purchase price of the product less any rebates. Any repaired or replacement products will be warranted for the remainder of the original Warranty Period or thirty (30) days, whichever is longer. All products and parts that are replaced become the property of Linksys.

Exclusions and Limitations

This limited warranty does not apply if: (a) the product assembly seal has been removed or damaged, (b) the product has been altered or modified, except by Linksys, (c) the product damage was caused by use with non-Linksys products, (d) the product has not been installed, operated, repaired, or maintained in accordance with instructions supplied by Linksys, (e) the product has been subjected to abnormal physical or electrical stress, misuse, negligence, or accident, (f) the serial number on the Product has been altered, defaced, or removed, or (g) the product is supplied or licensed for beta, evaluation, testing or demonstration purposes for which Linksys does not charge a purchase price or license fee.

ALL SOFTWARE PROVIDED BY LINKSYS WITH THE PRODUCT, WHETHER FACTORY LOADED ON THE PRODUCT OR CONTAINED ON MEDIA ACCOMPANYING THE PRODUCT, IS PROVIDED AS IS WITHOUT WARRANTY OF ANY KIND. Without limiting the foregoing, Linksys does not warrant that the operation of the product or software will be uninterrupted or error free. Also, due to the continual development of new techniques for intruding upon and attacking networks, Linksys does not warrant that the product, software or any equipment, system or network on which the product or software is used will be free of vulnerability to intrusion or attack. The product may include or be bundled with third party software or service offerings. This limited warranty shall not apply to such third party software or service offerings. This limited warranty does not guarantee any continued availability of a third party's service for which this product's use or operation may require.

TO THE EXTENT NOT PROHIBITED BY LAW, ALL IMPLIED WARRANTIES AND CONDITIONS OF MERCHANTABILITY, SATISFACTORY QUALITY OR FITNESS FOR A PARTICULAR PURPOSE ARE LIMITED TO THE DURATION OF THE WARRANTY PERIOD. ALL OTHER EXPRESS OR IMPLIED CONDITIONS, REPRESENTATIONS AND WARRANTIES, INCLUDING, BUT NOT LIMITED TO, ANY IMPLIED WARRANTY OF NON-INFRINGEMENT, ARE DISCLAIMED. Some jurisdictions do not allow limitations on how long an implied warranty lasts, so the above limitation may not apply to you. This limited warranty gives you specific legal rights, and you may also have other rights which vary by jurisdiction.

TO THE EXTENT NOT PROHIBITED BY LAW, IN NO EVENT WILL LINKSYS BE LIABLE FOR ANY LOST DATA, REVENUE OR PROFIT, OR FOR SPECIAL, INDIRECT, CONSEQUENTIAL, INCIDENTAL OR PUNITIVE DAMAGES, REGARDLESS OF THE THEORY OF LIABILITY (INCLUDING NEGLIGENCE), ARISING OUT OF OR RELATED TO THE USE OF OR INABILITY TO USE THE PRODUCT (INCLUDING ANY SOFTWARE), EVEN IF LINKSYS HAS BEEN ADVISED OF THE POSSIBILITY OF SUCH DAMAGES. IN NO EVENT WILL LINKSYS' LIABILITY EXCEED THE AMOUNT PAID BY YOU FOR THE PRODUCT. The foregoing limitations will apply even if any warranty or remedy provided under this limited warranty fails of its essential purpose. Some jurisdictions do not allow the exclusion or limitation of incidental or consequential damages, so the above limitation or exclusion may not apply to you.

Obtaining Warranty Service

If you have a question about your product or experience a problem with it, please go to www.linksys.com/support where you will find a variety of online support tools and information to assist you with your product. If the product proves defective during the Warranty Period, contact the Value Added Reseller (VAR) from whom you purchased the product or Linksys Technical Support for instructions on how to obtain warranty service. The telephone number for Linksys Technical Support in your area can be found in the product User Guide and at www.linksys.com. Have your product serial number and proof of purchase on hand when calling. A DATED PROOF OF ORIGINAL PURCHASE IS REQUIRED TO PROCESS WARRANTY CLAIMS. If you are requested to return your product, you will be given a Return Materials Authorization (RMA) number. You are responsible for properly packaging and shipping your product to Linksys at your cost and risk. You must include the RMA number and a copy of your dated proof of original purchase when returning your product. Products received without a RMA number and dated proof of original purchase will be rejected. Do not include any other items with the product you are returning to Linksys. Defective product covered by this limited warranty will be repaired or replaced and returned to you without charge. Customers outside of the United States of America and Canada are responsible for all shipping and handling charges, custom duties, VAT and other associated taxes and charges. Repairs or replacements not covered under this limited warranty will be subject to charge at Linksys' then-current rates.

Technical Support

This limited warranty is neither a service nor a support contract. Information about Linksys' current technical support offerings and policies (including any fees for support services) can be found at: www.linksys.com/support. This limited warranty is governed by the laws of the jurisdiction in which the Product was purchased by you. Please direct all inquiries to: Linksys, P.O. Box 18558, Irvine, CA 92623

Software License Agreement

Software in Linksys Products:

This product from Cisco-Linksys LLC or from one of its affiliates Cisco Systems-Linksys (Asia) Pt. Ltd. or Cisco-Linksys K.K. ("Linksys") contains software (including firmware) originating from Linksys and its suppliers and may also contain software from the open source community. Any software originating from Linksys and its suppliers is licensed under the Linksys Software License Agreement contained at Schedule 1 below. You may also be prompted to review and accept that Linksys Software License Agreement upon installation of the software.

Any software from the open source community is licensed under the specific license terms applicable to that software made available by Linksys at www.linksys.com/gpl or as provided for in Schedules 2 and 3 below.

Where such specific license terms entitle you to the source code of such software, that source code is upon request available at cost from Linksys for at least three years from the purchase date of this product and may also be available for download from www.linksys.com/gpl. For detailed license terms and additional information on open source software in Linksys products please look at the Linksys public web site at: www.linksys.com/gpl/ or Schedule 2 below as applicable.

BY DOWNLOADING OR INSTALLING THE SOFTWARE, OR USING THE PRODUCT CONTAINING THE SOFTWARE, YOU ARE CONSENTING TO BE BOUND BY THE SOFTWARE LICENSE AGREEMENTS BELOW. IF YOU DO NOT AGREE TO ALL OF THESE TERMS, THEN YOU MAY NOT DOWNLOAD, INSTALL OR USE THE SOFTWARE. YOU MAY RETURN UNUSED SOFTWARE (OR, IF THE SOFTWARE IS SUPPLIED AS PART OF ANOTHER PRODUCT, THE UNUSED PRODUCT) FOR A FULL REFUND UP TO 30 DAYS AFTER ORIGINAL PURCHASE, SUBJECT TO THE RETURN PROCESS AND POLICIES OF THE PARTY FROM WHICH YOU PURCHASED SUCH PRODUCT OR SOFTWARE.

Software Licenses:

The software Licenses applicable to software from Linksys are made available at the Linksys public web site at: www.linksys.com and www.linksys.com/gpl/ respectively. For your convenience of reference, a copy of the Linksys Software License Agreement and the main open source code licenses used by Linksys in its products are contained in the Schedules below.

Schedule 1 Linksys Software License Agreement

THIS LICENSE AGREEMENT IS BETWEEN YOU AND CISCO-LINKSYS LLC OR ONE OF ITS AFFILIATES CISCO SYSTEMS-LINKSYS (ASIA) PTE LTD. OR CISCO-LINKSYS K.K. ("LINKSYS") LICENSING THE SOFTWARE INSTEAD OF CISCO-LINKSYS LLC. BY DOWNLOADING OR INSTALLING THE SOFTWARE, OR USING THE PRODUCT CONTAINING THE SOFTWARE, YOU ARE CONSENTING TO BE BOUND BY THIS AGREEMENT. IF YOU DO NOT AGREE TO ALL OF THESE TERMS, THEN YOU MAY NOT DOWNLOAD, INSTALL OR USE THE SOFTWARE. YOU MAY RETURN UNUSED SOFTWARE (OR, IF THE SOFTWARE IS SUPPLIED AS PART OF ANOTHER PRODUCT, THE UNUSED PRODUCT) FOR A FULL REFUND UP TO 30 DAYS AFTER ORIGINAL PURCHASE, SUBJECT TO THE RETURN PROCESS AND POLICIES OF THE PARTY FROM WHICH YOU PURCHASED SUCH PRODUCT OR SOFTWARE.

License. Subject to the terms and conditions of this Agreement, Linksys grants the original end user purchaser of the Linksys product containing the Software ("You") a nonexclusive license to use the Software solely as embedded in or (where authorized in the applicable documentation) for communication with such product. This license may not be sublicensed, and is not transferable except to a person or entity to which you transfer ownership of the complete Linksys product containing the Software, provided you permanently transfer all rights under this Agreement and do not retain any full or partial copies of the Software, and the recipient agrees to the terms of this Agreement.

"Software" includes, and this Agreement will apply to (a) the software of Linksys or its suppliers provided in or with the applicable Linksys product, and (b) any upgrades, updates, bug fixes or modified versions ("Upgrades") or backup copies of the Software supplied to You by Linksys or an authorized reseller, provided you already hold a valid license to the original software and have paid any applicable fee for the Upgrade.

Protection of Information. The Software and documentation contain trade secrets and/or copyrighted materials of Linksys or its suppliers. You will not copy or modify the Software or decompile, decrypt, reverse engineer or disassemble the Software (except to the extent expressly permitted by law notwithstanding this provision), and You will not disclose or make available such trade secrets or copyrighted material in any form to any third party. Title to and ownership of the Software and documentation and any portion thereof, will remain solely with Linksys or its suppliers.

Collection and Processing of Information. You agree that Linksys and/or its affiliates may, from time to time, collect and process information about your Linksys product and/or the Software and/or your use of either in order (i) to enable Linksys to offer you Upgrades; (ii) to ensure that your Linksys product and/or the Software is being used in accordance with the terms of this Agreement; (iii) to provide improvements to the way Linksys delivers technology to you and to other Linksys customers; (iv) to enable Linksys to comply with the terms of any agreements it has with any third parties regarding your Linksys product and/or Software and/or (v) to enable Linksys to comply with all applicable laws and/or regulations, or the requirements of any regulatory authority or government agency. Linksys and/or its affiliates may collect and process this information provided that it does not identify you personally. Your use of your Linksys product and/or the Software constitutes this consent by you to Linksys and/or its affiliates' collection and use of such information and, for EEA customers, to the transfer of such information to a location outside the EEA.

Software Upgrades etc. If the Software enables you to receive Upgrades, you may elect at any time to receive these Upgrades either automatically or manually. If you elect to receive Upgrades manually or you otherwise elect not to receive or be notified of any Upgrades, you may expose your Linksys product and/or the Software to serious security threats and/or some features within your Linksys product and/or Software may become inaccessible. There may be circumstances where we apply an Upgrade automatically in order to comply with changes in legislation, legal or regulatory requirements or as a result of requirements to comply with the terms of any agreements Linksys has with any third parties regarding your Linksys product and/or the Software. You will always be notified of any Upgrades being delivered to you. The terms of this license will apply to any such Upgrade unless the Upgrade in question is accompanied by a separate license, in which event the terms of that license will apply.

Open Source Software. The GPL or other open source code incorporated into the Software and the open source license for such source code are available for free download at <http://www.linksys.com/gpl>. If You would like a copy of the GPL or other open source code in this

Software on a CD, Linksys will mail to You a CD with such code for \$9.99 plus the cost of shipping, upon request.

Term and Termination. You may terminate this License at any time by destroying all copies of the Software and documentation. Your rights under this License will terminate immediately without notice from Linksys if You fail to comply with any provision of this Agreement.

Limited Warranty. The warranty terms and period specified in the applicable Linksys Product User Guide shall also apply to the Software.

Disclaimer of Liabilities. IN NO EVENT WILL LINKSYS OR ITS SUPPLIERS BE LIABLE FOR ANY LOST DATA, REVENUE OR PROFIT, OR FOR SPECIAL, INDIRECT, CONSEQUENTIAL, INCIDENTAL OR PUNITIVE DAMAGES, REGARDLESS OF CAUSE (INCLUDING NEGLIGENCE), ARISING OUT OF OR RELATED TO THE USE OF OR INABILITY TO USE THE SOFTWARE, EVEN IF LINKSYS HAS BEEN ADVISED OF THE POSSIBILITY OF SUCH DAMAGES. IN NO EVENT WILL LINKSYS' LIABILITY EXCEED THE AMOUNT PAID BY YOU FOR THE PRODUCT. The foregoing limitations will apply even if any warranty or remedy under this Agreement fails of its essential purpose. Some jurisdictions do not allow the exclusion or limitation of incidental or consequential damages, so the above limitation or exclusion may not apply to You.

Export. Software, including technical data, may be subject to U.S. export control laws and regulations and/or export or import regulations in other countries. You agree to comply strictly with all such laws and regulations.

U.S. Government Users. The Software and documentation qualify as "commercial items" as defined at 48 C.F.R. 2.101 and 48 C.F.R. 12.212. All Government users acquire the Software and documentation with only those rights herein that apply to non-governmental customers.

General Terms. This Agreement will be governed by and construed in accordance with the laws of the State of California, without reference to conflict of laws principles. The United Nations Convention on Contracts for the International Sale of Goods will not apply. If any portion of this Agreement is found to be void or unenforceable, the remaining provisions will remain in full force and effect. This Agreement constitutes the entire agreement between the parties with respect to the Software and supersedes any conflicting or additional terms contained in any purchase order or elsewhere.

END OF SCHEDULE 1

Schedule 2

If this Linksys product contains open source software licensed under Version 2 of the "GNU General Public License" then the license terms below in this Schedule 2 will apply to that open source software. The license terms below in this Schedule 2 are from the public web site at <http://www.gnu.org/copyleft/gpl.html>

GNU GENERAL PUBLIC LICENSE

Version 2, June 1991

Copyright (C) 1989, 1991 Free Software Foundation, Inc.

51 Franklin Street, Fifth Floor, Boston, MA 02110-1301, USA

Everyone is permitted to copy and distribute verbatim copies of this license document, but changing it is not allowed.

Preamble

The licenses for most software are designed to take away your freedom to share and change it. By contrast, the GNU General Public License is intended to guarantee your freedom to share and change free software--to make sure the software is free for all its users. This General Public License applies to most of the Free Software Foundation's software and to any other program whose authors commit to using it. (Some other Free Software Foundation software is covered by the GNU Lesser General Public License instead.) You can apply it to your programs, too.

When we speak of free software, we are referring to freedom, not price. Our General Public Licenses are designed to make sure that you have the freedom to distribute copies of free software (and charge for this service if you wish), that you receive source code or can get it if you want it, that you can change the software or use pieces of it in new free programs; and that you know you can do these things.

To protect your rights, we need to make restrictions that forbid anyone to deny you these rights or to ask you to surrender the rights. These restrictions translate to certain responsibilities for you if you distribute copies of the software, or if you modify it.

For example, if you distribute copies of such a program, whether gratis or for a fee, you must give the recipients all the rights that you have. You must make sure that they, too, receive or can get the source code. And you must show them these terms so they know their rights.

We protect your rights with two steps: (1) copyright the software, and (2) offer you this license which gives you legal permission to copy, distribute and/or modify the software.

Also, for each author's protection and ours, we want to make certain that everyone understands that there is no warranty for this free software. If the software is modified by someone else and passed on, we want its recipients to know that what they have is not the original, so that any problems introduced by others will not reflect on the original authors' reputations.

Finally, any free program is threatened constantly by software patents. We wish to avoid the danger that redistributors of a free program will individually obtain patent licenses, in effect making the program proprietary. To prevent this, we have made it clear that any patent must be licensed for everyone's free use or not licensed at all.

The precise terms and conditions for copying, distribution and modification follow.

TERMS AND CONDITIONS FOR COPYING, DISTRIBUTION AND MODIFICATION

0. This License applies to any program or other work which contains a notice placed by the copyright holder saying it may be distributed under the terms of this General Public License. The "Program", below, refers to any such program or work, and a "work based on the Program" means either the Program or any derivative work under copyright law: that is to say, a work containing the Program or a portion of it, either verbatim or with modifications and/or translated into another language. (Hereinafter, translation is included without limitation in the term "modification".) Each licensee is addressed as "you".

Activities other than copying, distribution and modification are not covered by this License; they are outside its scope. The act of running the Program is not restricted, and the output from the Program is covered only if its contents constitute a work based on the Program (independent of having been made by running the Program). Whether that is true depends on what the Program does.

1. You may copy and distribute verbatim copies of the Program's source code as you receive it, in any medium, provided that you conspicuously and appropriately publish on each copy an appropriate copyright notice and disclaimer of warranty; keep intact all the notices that refer to this License and to the absence of any warranty; and give any other recipients of the Program a copy of this License along with the Program.

You may charge a fee for the physical act of transferring a copy, and you may at your option offer warranty protection in exchange for a fee.

2. You may modify your copy or copies of the Program or any portion of it, thus forming a work based on the Program, and copy and distribute such modifications or work under the terms of Section 1 above, provided that you also meet all of these conditions:

- a) You must cause the modified files to carry prominent notices stating that you changed the files and the date of any change.
- b) You must cause any work that you distribute or publish, that in whole or in part contains or is derived from the Program or any part thereof, to be licensed as a whole at no charge to all third parties under the terms of this License.
- c) If the modified program normally reads commands interactively when run, you must cause it, when started running for such interactive use in the most ordinary way, to print or display an announcement including an appropriate copyright notice and a notice that there is no warranty (or else, saying that you provide a warranty) and that users may redistribute the program under these conditions, and telling the user how to view a copy of this License. (Exception: if the Program itself is interactive but does not normally print such an announcement, your work based on the Program is not required to print an announcement.)

These requirements apply to the modified work as a whole. If identifiable sections of that work are not derived from the Program, and can be reasonably considered independent and separate works in themselves, then this License, and its terms, do not apply to those sections when you distribute them as separate works. But when you distribute the same sections as part of a whole which is a work based on the Program, the distribution of the whole must be on the terms of this License, whose permissions for other licensees extend to the entire whole, and thus to each and every part regardless of who wrote it.

Thus, it is not the intent of this section to claim rights or contest your rights to work written entirely by you; rather, the intent is to exercise the right to control the distribution of derivative or collective works based on the Program.

In addition, mere aggregation of another work not based on the Program with the Program (or with a work based on the Program) on a volume of a storage or distribution medium does not bring the other work under the scope of this License.

3. You may copy and distribute the Program (or a work based on it, under Section 2) in object code or executable form under the terms of Sections 1 and 2 above provided that you also do one of the following:

- a) Accompany it with the complete corresponding machine-readable source code, which must be distributed under the terms of Sections 1 and 2 above on a medium customarily used for software interchange; or,
- b) Accompany it with a written offer, valid for at least three years, to give any third party, for a charge no more than your cost of physically performing source distribution, a complete machine-readable copy of the corresponding source code, to be distributed under the terms of Sections 1 and 2 above on a medium customarily used for software interchange; or,
- c) Accompany it with the information you received as to the offer to distribute corresponding source code. (This alternative is allowed only for noncommercial distribution and only if you received the program in object code or executable form with such an offer, in accord with Subsection b above.)

The source code for a work means the preferred form of the work for making modifications to it. For an executable work, complete source code means all the source code for all modules it contains, plus any associated interface definition files, plus the scripts used to control compilation and installation of the executable. However, as a special exception, the source code distributed need not include anything that is normally distributed (in either source or binary form) with the major components (compiler, kernel, and so on) of the operating system on which the executable runs, unless that component itself accompanies the executable.

If distribution of executable or object code is made by offering access to copy from a designated place, then offering equivalent access to copy the source code from the same place counts as distribution of the source code, even though third parties are not compelled to copy the source along with the object code.

4. You may not copy, modify, sublicense, or distribute the Program except as expressly provided under this License. Any attempt otherwise to copy, modify, sublicense or distribute the Program is void, and will automatically terminate your rights under this License. However, parties who have received copies, or rights, from you under this License will not have their licenses terminated so long as such parties remain in full compliance.

5. You are not required to accept this License, since you have not signed it. However, nothing else grants you permission to modify or distribute the Program or its derivative works. These actions are prohibited by law if you do not accept this License. Therefore, by modifying or distributing the Program (or any work based on the Program), you indicate your acceptance of this License to do so, and all its terms and conditions for copying, distributing or modifying the Program or works based on it.

6. Each time you redistribute the Program (or any work based on the Program), the recipient automatically receives a license from the original licensor to copy, distribute or modify the Program subject to these terms and conditions. You may not impose any further restrictions on the recipients' exercise of the rights granted herein. You are not responsible for enforcing compliance by third parties to this License.

7. If, as a consequence of a court judgment or allegation of patent infringement or for any other reason (not limited to patent issues), conditions are imposed on you (whether by court order, agreement or otherwise) that contradict the conditions of this License, they do not excuse you from the conditions of this License. If you cannot distribute so as to satisfy simultaneously your obligations under this License and any other pertinent obligations, then as a consequence you may not distribute the Program at all. For example, if a patent license would not permit royalty-free redistribution of the Program by all those who receive copies directly or indirectly through you, then the only way you could satisfy both it and this License would be to refrain entirely from distribution of the Program.

If any portion of this section is held invalid or unenforceable under any particular circumstance, the balance of the section is intended to apply and the section as a whole is intended to apply in other circumstances.

It is not the purpose of this section to induce you to infringe any patents or other property right claims or to contest validity of any such claims; this section has the sole purpose of protecting the integrity of the free software distribution system, which is implemented by public license practices. Many people have made generous contributions to the wide range of software distributed through that system in reliance on consistent application of that system; it is up to the author/donor to decide if he or she is willing to distribute software through any other system and a licensee cannot impose that choice.

This section is intended to make thoroughly clear what is believed to be a consequence of the rest of this License.

8. If the distribution and/or use of the Program is restricted in certain countries either by patents or by copyrighted interfaces, the original copyright holder who places the Program under this License may add an explicit geographical distribution limitation excluding those countries, so that distribution is permitted only in or among countries not thus excluded. In such case, this License incorporates the limitation as if written in the body of this License.

9. The Free Software Foundation may publish revised and/or new versions of the General Public License from time to time. Such new versions will be similar in spirit to the present version, but may differ in detail to address new problems or concerns.

Each version is given a distinguishing version number. If the Program specifies a version number of this License which applies to it and "any later version", you have the option of following the terms and conditions either of that version or of any later version published by the Free Software Foundation. If the Program does not specify a version number of this License, you may choose any version ever published by the Free Software Foundation.

10. If you wish to incorporate parts of the Program into other free programs whose distribution conditions are different, write to the author to ask for permission. For software which is copyrighted by the Free Software Foundation, write to the Free Software Foundation; we sometimes make exceptions for this. Our decision will be guided by the two goals of preserving the free status of all derivatives of our free software and of promoting the sharing and reuse of software generally.

NO WARRANTY

11. BECAUSE THE PROGRAM IS LICENSED FREE OF CHARGE, THERE IS NO WARRANTY FOR THE PROGRAM, TO THE EXTENT PERMITTED BY APPLICABLE LAW. EXCEPT WHEN OTHERWISE

STATED IN WRITING THE COPYRIGHT HOLDERS AND/OR OTHER PARTIES PROVIDE THE PROGRAM "AS IS" WITHOUT WARRANTY OF ANY KIND, EITHER EXPRESSED OR IMPLIED, INCLUDING, BUT NOT LIMITED TO, THE IMPLIED WARRANTIES OF MERCHANTABILITY AND FITNESS FOR A PARTICULAR PURPOSE. THE ENTIRE RISK AS TO THE QUALITY AND PERFORMANCE OF THE PROGRAM IS WITH YOU. SHOULD THE PROGRAM PROVE DEFECTIVE, YOU ASSUME THE COST OF ALL NECESSARY SERVICING, REPAIR OR CORRECTION.

12. IN NO EVENT UNLESS REQUIRED BY APPLICABLE LAW OR AGREED TO IN WRITING WILL ANY COPYRIGHT HOLDER, OR ANY OTHER PARTY WHO MAY MODIFY AND/OR REDISTRIBUTE THE PROGRAM AS PERMITTED ABOVE, BE LIABLE TO YOU FOR DAMAGES, INCLUDING ANY GENERAL, SPECIAL, INCIDENTAL OR CONSEQUENTIAL DAMAGES ARISING OUT OF THE USE OR INABILITY TO USE THE PROGRAM (INCLUDING BUT NOT LIMITED TO LOSS OF DATA OR DATA BEING RENDERED INACCURATE OR LOSSES SUSTAINED BY YOU OR THIRD PARTIES OR A FAILURE OF THE PROGRAM TO OPERATE WITH ANY OTHER PROGRAMS), EVEN IF SUCH HOLDER OR OTHER PARTY HAS BEEN ADVISED OF THE POSSIBILITY OF SUCH DAMAGES.

END OF TERMS AND CONDITIONS

END OF SCHEDULE 2

Schedule 3

If this Linksys product contains open source software licensed under the OpenSSL license then the license terms below in this Schedule 3 will apply to that open source software. The license terms below in this Schedule 3 are from the public web site at <http://www.openssl.org/source/license.html>

The OpenSSL toolkit stays under a dual license, i.e. both the conditions of the OpenSSL License and the original SSLeay license apply to the toolkit. See below for the actual license texts. Actually both licenses are BSD-style Open Source licenses. In case of any license issues related to OpenSSL please contact openssl-core@openssl.org.

OpenSSL License

```
-----
/*
=====
===
```

Copyright (c) 1998-2007 The OpenSSL Project. All rights reserved.

Redistribution and use in source and binary forms, with or without modification, are permitted provided that the following conditions are met:

1. Redistributions of source code must retain the above copyright notice, this list of conditions and the following disclaimer.
2. Redistributions in binary form must reproduce the above copyright notice, this list of conditions and the following disclaimer in the documentation and/or other materials provided with the distribution.

3. All advertising materials mentioning features or use of this software must display the following acknowledgment: "This product includes software developed by the OpenSSL Project for use in the OpenSSL Toolkit. (<http://www.openssl.org/>)"
4. The names "OpenSSL Toolkit" and "OpenSSL Project" must not be used to endorse or promote products derived from this software without prior written permission. For written permission, please contact openssl-core@openssl.org.
5. Products derived from this software may not be called "OpenSSL" nor may "OpenSSL" appear in their names without prior written permission of the OpenSSL Project.
6. Redistributions of any form whatsoever must retain the following acknowledgment: "This product includes software developed by the OpenSSL Project for use in the OpenSSL Toolkit (<http://www.openssl.org/>)"

THIS SOFTWARE IS PROVIDED BY THE OpenSSL PROJECT ``AS IS'' AND ANY EXPRESSED OR IMPLIED WARRANTIES, INCLUDING, BUT NOT LIMITED TO, THE IMPLIED WARRANTIES OF MERCHANTABILITY AND FITNESS FOR A PARTICULAR PURPOSE ARE DISCLAIMED. IN NO EVENT SHALL THE OpenSSL PROJECT OR ITS CONTRIBUTORS BE LIABLE FOR ANY DIRECT, INDIRECT, INCIDENTAL, SPECIAL, EXEMPLARY, OR CONSEQUENTIAL DAMAGES (INCLUDING, BUT NOT LIMITED TO, PROCUREMENT OF SUBSTITUTE GOODS OR SERVICES; LOSS OF USE, DATA, OR PROFITS; OR BUSINESS INTERRUPTION) HOWEVER CAUSED AND ON ANY THEORY OF LIABILITY, WHETHER IN CONTRACT, STRICT LIABILITY, OR TORT (INCLUDING NEGLIGENCE OR OTHERWISE) ARISING IN ANY WAY OUT OF THE USE OF THIS SOFTWARE, EVEN IF ADVISED OF THE POSSIBILITY OF SUCH DAMAGE.

=====
 This product includes cryptographic software written by Eric Young (ey@cryptsoft.com). This product includes software written by Tim Hudson (tjh@cryptsoft.com).

Original SSLeay License

Copyright (C) 1995-1998 Eric Young (ey@cryptsoft.com)

All rights reserved.

This package is an SSL implementation written by Eric Young (ey@cryptsoft.com).

The implementation was written so as to conform with Netscape's SSL.

This library is free for commercial and non-commercial use as long as the following conditions are aheared to. The following conditions apply to all code found in this distribution, be it the RC4, RSA, lhash, DES, etc., code; not just the SSL code. The SSL documentation included with this distribution is covered by the same copyright terms except that the holder is Tim Hudson (tjh@cryptsoft.com).

Copyright remains Eric Young's, and as such any Copyright notices in the code are not to be removed.

If this package is used in a product, Eric Young should be given attribution as the author of the parts of the library used. This can be in the form of a textual message at program startup or in documentation (online or textual) provided with the package.

Redistribution and use in source and binary forms, with or without modification, are permitted provided that the following conditions are met:

1. Redistributions of source code must retain the copyright notice, this list of conditions and the following disclaimer.
2. Redistributions in binary form must reproduce the above copyright notice, this list of conditions and the following disclaimer in the documentation and/or other materials provided with the distribution.
3. All advertising materials mentioning features or use of this software must display the following acknowledgement:

"This product includes cryptographic software written by Eric Young (eay@cryptsoft.com)"

The word 'cryptographic' can be left out if the routines from the library being used are not cryptographic related :-).

4. If you include any Windows specific code (or a derivative thereof) from the apps directory (application code) you must include an acknowledgement: "This product includes software written by Tim Hudson (tjh@cryptsoft.com)"

THIS SOFTWARE IS PROVIDED BY ERIC YOUNG ``AS IS'' AND ANY EXPRESS OR IMPLIED WARRANTIES, INCLUDING, BUT NOT LIMITED TO, THE IMPLIED WARRANTIES OF MERCHANTABILITY AND FITNESS FOR A PARTICULAR PURPOSE ARE DISCLAIMED. IN NO EVENT SHALL THE AUTHOR OR CONTRIBUTORS BE LIABLE FOR ANY DIRECT, INDIRECT, INCIDENTAL, SPECIAL, EXEMPLARY, OR CONSEQUENTIAL DAMAGES (INCLUDING, BUT NOT LIMITED TO, PROCUREMENT OF SUBSTITUTE GOODS OR SERVICES; LOSS OF USE, DATA, OR PROFITS; OR BUSINESS INTERRUPTION) HOWEVER CAUSED AND ON ANY THEORY OF LIABILITY, WHETHER IN CONTRACT, STRICT LIABILITY, OR TORT (INCLUDING NEGLIGENCE OR OTHERWISE) ARISING IN ANY WAY OUT OF THE USE OF THIS SOFTWARE, EVEN IF ADVISED OF THE POSSIBILITY OF SUCH DAMAGE.

The licence and distribution terms for any publicly available version or derivative of this code cannot be changed. i.e. this code cannot simply be copied and put under another distribution licence [including the GNU Public Licence.]

END OF SCHEDULE 3