

# USER MANUAL

DCM-202

VERSION 1.00



# Table of Contents

<b>Product Overview .....</b>	<b>3</b>	<b>Technical Specifications .....</b>	<b>25</b>
Package Contents .....	3	<b>Warranty .....</b>	<b>27</b>
System Requirements .....	3		
Introduction .....	4		
Features .....	5		
Hardware Overview .....	6		
Front Panel LEDs .....	6		
Back Panel Connectors .....	7		
<b>Before You Begin .....</b>	<b>8</b>		
Local Cable Network Service .....	8		
Prepare Your Workspace .....	8		
<b>Installation .....</b>	<b>9</b>		
Using the Ethernet Port .....	10		
Verify the TCP/IP Configuration .....	11		
Network Overview .....	12		
Connecting the Cable Modem .....	13		
Using the USB Port .....	14		
Network Overview .....	15		
Installing the Hardware .....	15		
Installing the Software Drivers .....	16		
Verify USB Installation .....	21		
<b>Troubleshooting .....</b>	<b>22</b>		

# Package Contents

- D-Link DCM-202
- Manual, Warranty and Drivers on CD
- Printed Quick Installation Guide
- One 12VDC/1.0A Power adapter
- 1 CAT 5 UTP Ethernet cable
- 1 USB cable
- 1 Cable modem stand to install the cable modem in a vertical position



**If any of the above items are missing, please contact your reseller.**

# System Requirements

**Verify that you have these items before beginning the installation:**

- A cable-line splitter (not included), if you plan to have the cable modem and a television connected to the same wall cable outlet.
- An active two-way cable line.

# Introduction

Thank you for purchasing the D-Link “Broadband Cable Modem with USB & Ethernet” DCM-202, which is an MCNS DOCSIS™ 2.0 cable modem featuring the latest DOCSIS technology.

The cable modem enables your network cable operator to provide you with broadband applications such as telecommunications, IP dedication for your small office/home office (SOHO), or high-speed residential Internet access. The cable modem provides a downstream speed of up to 38Mbps from the cable network to your computer and 30Mbps from your computer to the cable network.

The DES data encryption helps ensure privacy for the transmitted information. Another distinctive feature of the cable modem is its easy installation, because DHCP and TFTP clients can obtain automatic access to the IP address and configuration from their network servers via the modem. SNMP agents permit remote configuration and monitoring from a management station equipped with an SNMP server.

# Features

- Full-featured compact, economical cable modem with Ethernet and USB ports.
- DOCSIS 2.0 compliant.
- Capable of handling downstream data transmission speeds up to 38Mbps; upstream to 30Mbps  
User-friendly configuration and diagnostic utilities.
- RJ-45 10/100BaseT Ethernet port provides traditional industry standard connection.
- USB port allows easy plug-and-play attachment to PCs with the latest Windows® operating system.
- Extensive SNMP management support: MIB-II.
- Ethernet-like MIB, Bridge MIB, Cable Device MIB, Baseline privacy Interface MIB, RF Interface MIB.
- Easy-to-read front panel LED's clearly display network status and activity.

# Hardware Overview

## Front Panel LEDs

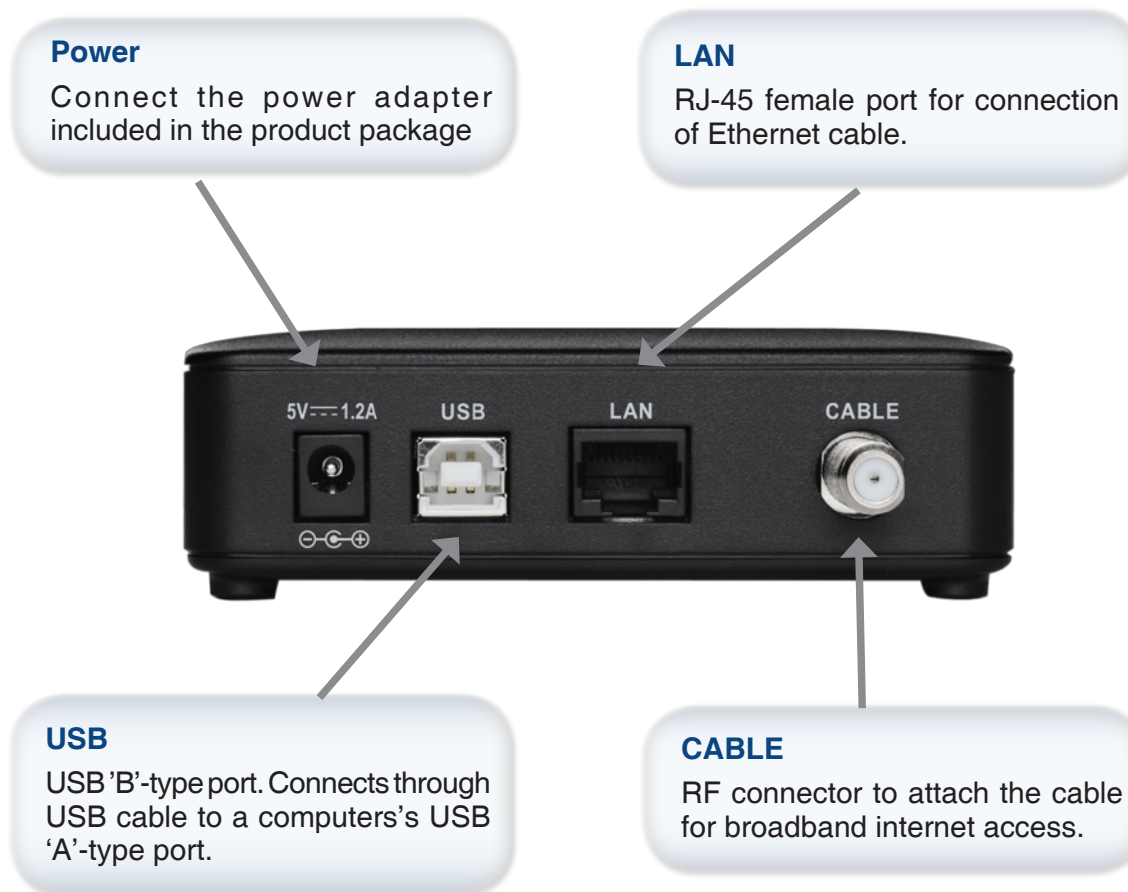
The LEDs on the cable modem indicate:

- The current performance of the cable modem.
- The condition of the network connection between the cable modem and your cable service provider.
- The condition of the connection between your cable modem and electrical power.



# Hardware Overview

## Back Panel Connectors



# Before You Begin

## Local Cable Network Service

### Before installing the modem:

- Remove any previous installations of wireless adapters
- Find the Serial Number, RF and Ethernet address located on a sticker on the cable modem and write them here:  
Serial Number S/N: \_\_\_\_\_  
RF and ETH MAC: \_\_\_\_\_
- Contact your local cable service operator for Internet/cable network access. Your local cable operator will check for cable access availability in your area, install a cable line (if necessary), provide you with an access account, set up configuration and verify other technical details.
- Ask your local cable service provider about adding additional IP addresses to your account. See “Which Installation to Use?” for more information.

## Prepare Your Workspace

### To prepare your workspace:

- Position the cable modem so that it is located near the computer and the wall cable outlet. There should be plenty of room to guide the cables away from the cable modem without crimping them.

### Prepare the cable modem:

- For vertical installation: Place the cable modem securely in the included stand.
- For horizontal installation: Use the four included feet to install the cable modem. Remove the backing paper and attach a foot to each of the corners on the cable modem; be sure to attach the feet on the surface that contains the model information stickers, as shown.
- Do not restrict the airflow around the cable modem.
- To enhance the best performance and proper function of the cable modem, place it on a horizontal surface or workplace and make sure that the cable modem does not move when it is operating.



# Installation

The cable modem enables you to connect to the Internet using either your computer's Ethernet or USB port.

Be sure to follow the installation steps for the setup you want to use. Using the Ethernet setup enables you to use a hub to connect multiple computers to the cable modem. To do this, you might have to obtain additional IP addresses from your cable operator.

Using the USB port enables you to install the cable modem more quickly and easily than connecting to the Internet using the Ethernet port, because you do not have to install a network interface card (NIC) into your computer. The USB port, however, only enables you to connect one computer to the cable modem.

See “Installing the Cable Modem Using the Ethernet Port”, or see “Installing the Cable Modem Using the USB Port” in the following pages, for more information.

## **To install the cable modem using the Ethernet port:**

- Any PC running Windows®, Macintosh®, or Linux with an Ethernet adapter.
- TCP/IP protocol installed.

## **To install the cable modem using the USB port:**

- Any PC running Microsoft Windows Vista™, XP, or 2000 operating systems.
- Original Windows Vista, XP, or 2000 installation CD or diskettes.
- An active USB port on your computer.

# Using the Ethernet Port

This section describes how to install the cable modem using the Ethernet port. Using the Ethernet port enables you to use a single connection to the Internet or use a router to connect multiple computers to the cable modem. You can also use multiple IP addresses from your cable operator when using the Ethernet connection. See “Installing the Cable Modem Using the USB Port” in this manual to set up the USB Connection.

When using the Ethernet connection, do NOT install the modem drivers. They are only for the USB connection.

## Verify the TCP/IP Configuration

Before installing the modem using the Ethernet setup, you must verify that your computer has the TCP/IP protocol installed. Follow the procedure for your operating system to verify or install the TCP/IP protocol.

### To configure TCP/IP on your Windows® Vista™ PC:

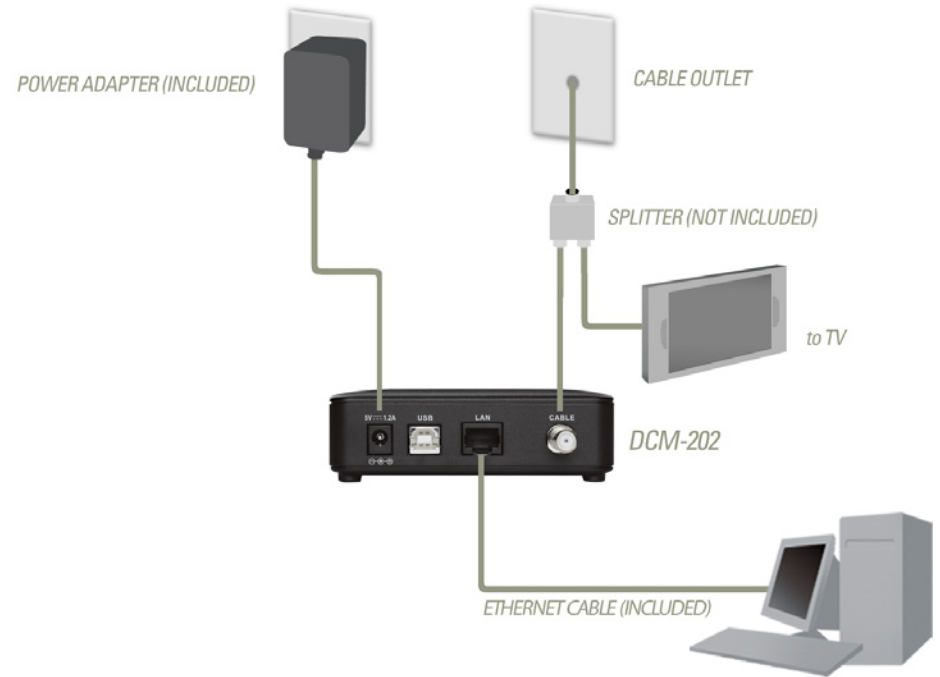
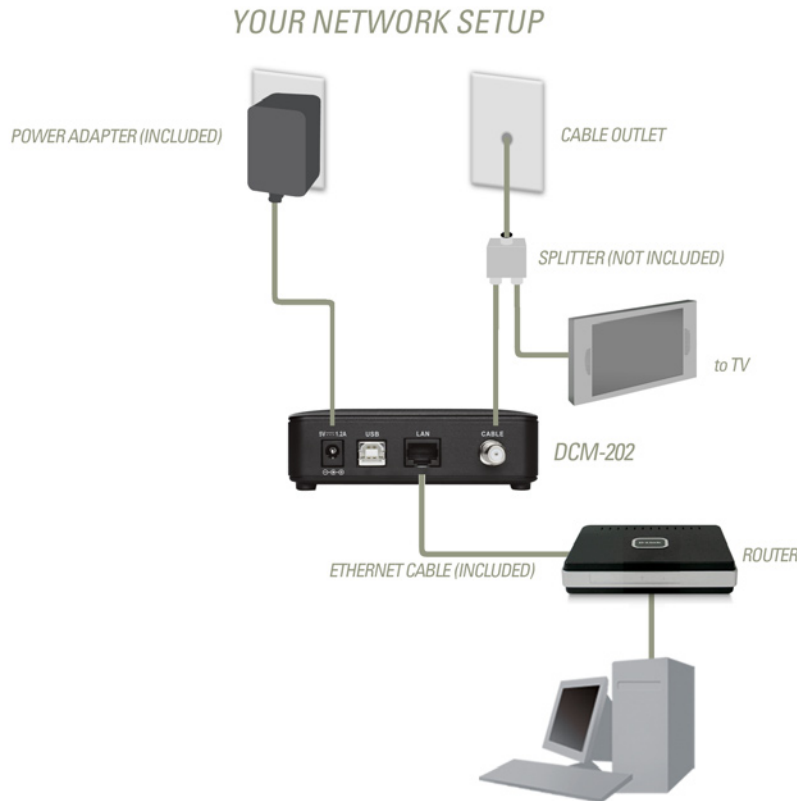
1. Right click on **Start->Network** and select **Properties**
2. On the the following pop up window, select **Tasks->Manage network connections**.
3. Right-click **Local Area Connection** and click **Properties**. Look for an entry named TCP/IP. If you see TCP/IP listed next to your Ethernet hardware device, you can now go to the section “Connecting the Cable Modem.” However, if TCP/IP is not listed, you must complete the following steps.
  - Scroll to the **Internet Protocol version 4 TCP/IP** option.
  - Click to place a check mark in the Internet Protocol check box
  - Click OK.
  - You can now connect the cable modem.

### To configure TCP/IP on your Windows 2000/XP PC:

1. Right-click the **My Network Places** icon on the Windows desktop.
2. Right-click **Local Area Connection** and click **Properties**. Look for an entry named TCP/IP. If you see TCP/IP listed next to your Ethernet hardware device, you can now go to the section “Connecting the Cable Modem.” However, if TCP/IP is not listed, you must complete the following steps.
  - Scroll to the Internet Protocol TCP/IP option.
  - Click to place a check mark in the Internet Protocol check box
  - Click **OK**.
  - You can now connect the cable modem.

# Network Overview

Below are two common ways to connect your DCM-202 modem to your network. The diagram on the left shows the connection with a broadband router. The diagram on the right shows the connection directly to a computer.



## Connecting the Cable Modem

**Install the cable modem according to the following procedure:**

1. Power off the computer.
2. Unplug the computer from the electrical wall outlet.
3. Make these connections:
  - Connect the coaxial cable to the cable modem's CATV cable connector. If you plan to have the cable connected to a television as well as the cable modem, you must use a cable line splitter (not included).
  - Plug the cable modem's power adapter into a wall outlet or surge protector and into the cable modem's power jack.
  - Plug one end of the Ethernet cable into the cable modem's Ethernet port and the other end of the cable into the existing NIC.
4. Plug in the computer.
5. Power on the computer. When installation is complete, your setup should resemble the illustration above. The modem is operating properly if the Power, Cable, Status and ETH light emitting diodes (LEDs) are solid green (lit and not blinking).

## Using the USB Port

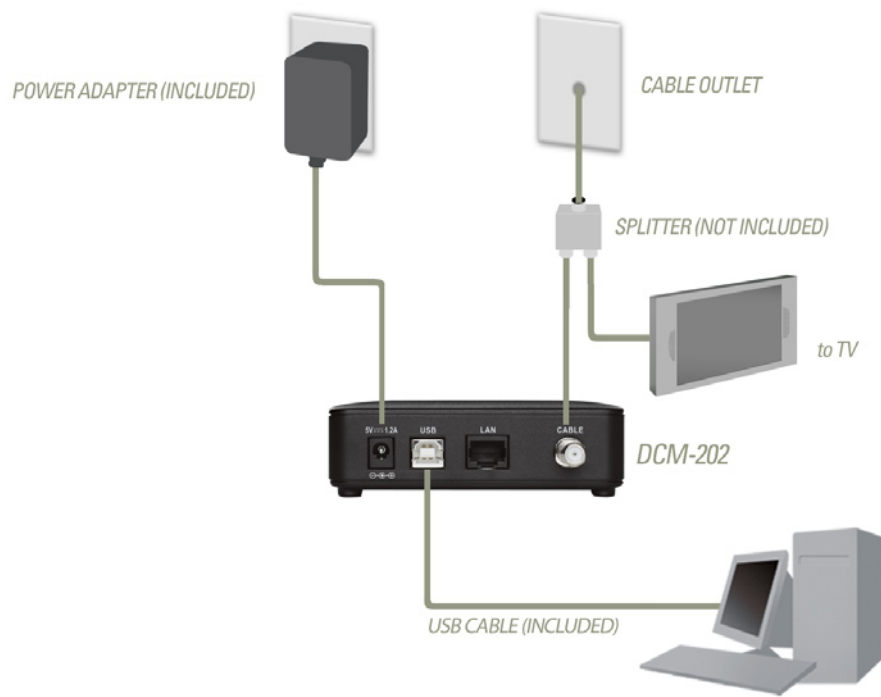
This section describes how to install the cable modem using the USB port. First you connect the hardware (cable modem and power adapter). You then install the software drivers and verify that the modem is operating properly. The USB port does not support the Macintosh® operating system. Using the USB port to connect to the Internet enables you to install the cable modem more quickly and easily than connecting to the Internet using the computer's Ethernet port, because you do not have to remove the case from the computer to install a network interface card (NIC). Using the USB port, however, enables you to connect only one computer to the cable modem. See "Installing the Cable Modem Using the Ethernet Port" if you wish to install the cable modem using the Ethernet port.

If you have or plan on purchasing a router, please refer to the "Using the Ethernet Port" section on page 11. You cannot use the USB connection with a router.

**Note:** Do not plug the USB modem into an external USB hub. Plug directly to your computer.

## Network Overview

The diagram below displays the connect of your DCM-202 modem to your computer using the USB cable.



## Installing the Hardware

**To install the hardware:**

1. Connect the coaxial cable to the cable modem's CATV cable connector.
2. Connect the USB cable to the modem (not the computer).
3. Plug the power adapter into the modem. Plug the other end into a wall outlet or power strip.

## Installing the Software Drivers

This section explains how to install the cable modem using the USB Connections with the Windows® Vista™, XP, or 2000 operating system (OS). Do not install these drivers if you are using the Ethernet connection.

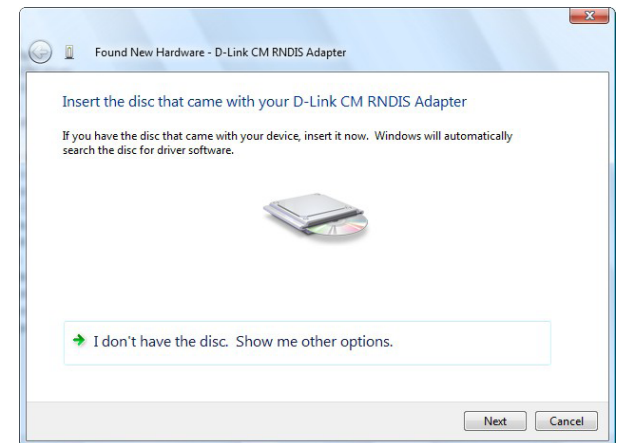
Power on the computer. After windows boots up, insert the DCM-202 CD-ROM. If the Welcome window opens, click **Close**. Plug the other end of the USB cable into an available USB slot on your computer. It is strongly recommended that you do not plug this modem into an USB hub.

### WINDOWS® VISTA™:

The **Found New Hardware** screen will appear. Click on **Locate and install driver software (recommended)**.



Click **Next** to continue.





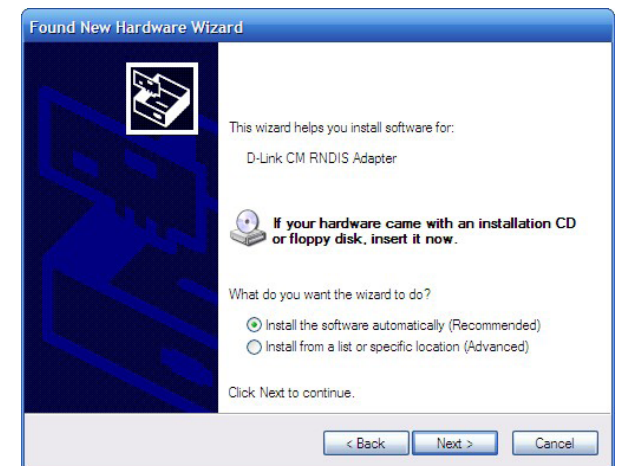
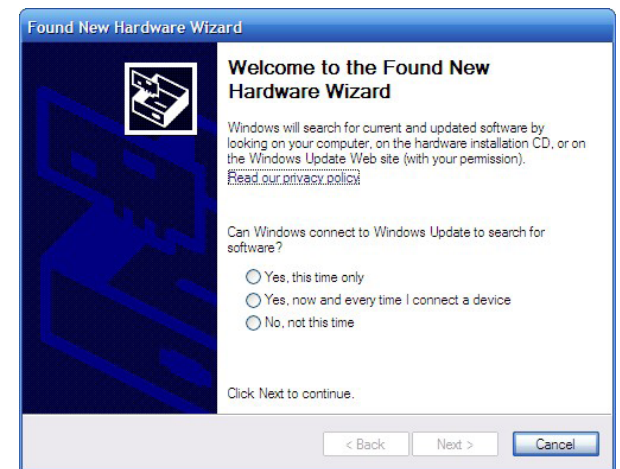
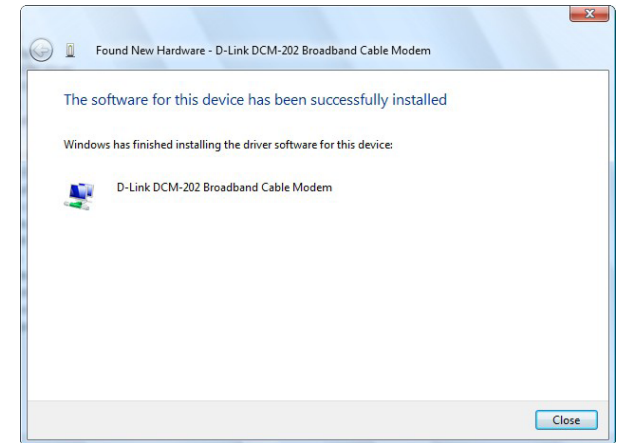
Click **Close**

### WINDOWS® XP:

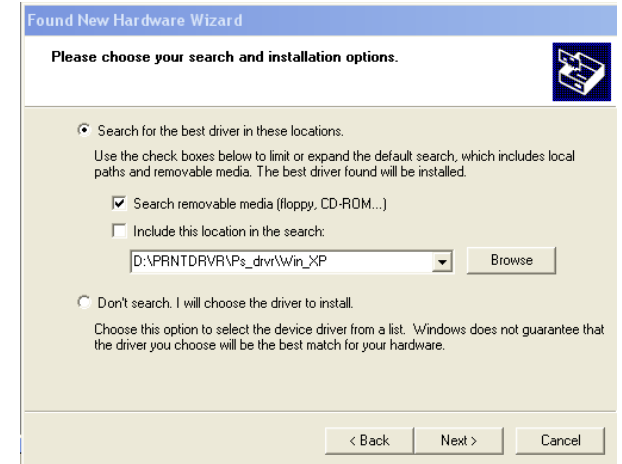
The **Found New Hardware** screen will appear. If you receive a *Can Windows connect to Windows Update to search for software* message, select **No, not this time**.

Click **Next** to continue.

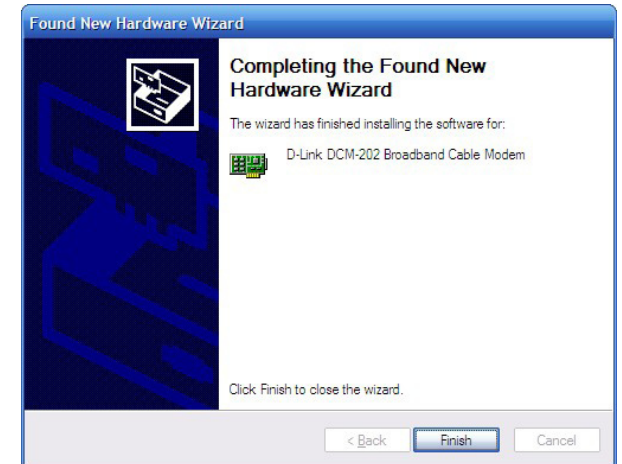
Select **Install from a list or specific location (advanced)** and then click **Next**.



Check **Search removable media (floppy, CD-ROM...)** and then click **Next** to search for the necessary driver files from the D-Link CD-ROM.



Once the drivers are installed, click **Finish**.

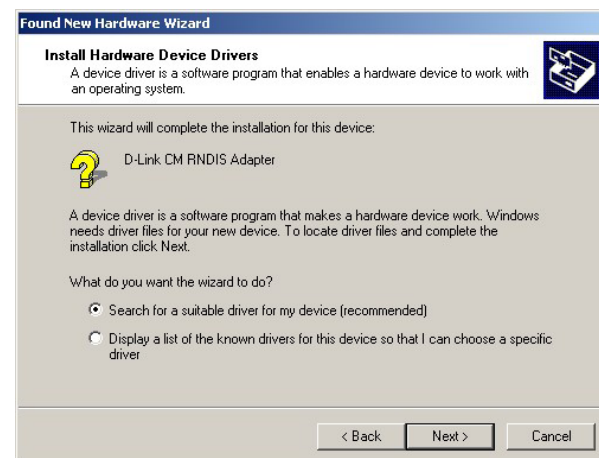


## WINDOWS® 2000:

The **Found New Hardware Wizard** screen appears. Click **Next** to Continue.



Select **Search for a suitable driver for my device (recommended)** and click **Next**.



Check the CD-ROM Drives check box and click **Next** to search for the necessary driver

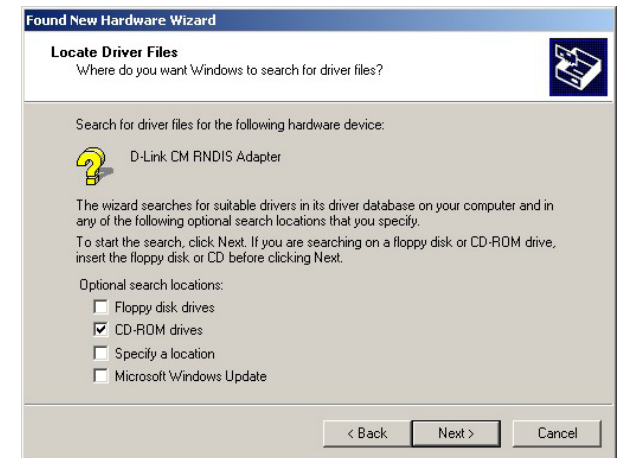
files.

When the correct location of the driver file appears, click **OK**.

The **Found New Hardware Wizard** displays the search results.

Click **Next** to install the driver files for the cable modem.

Click **Finish** to continue.



# Verify USB Installation

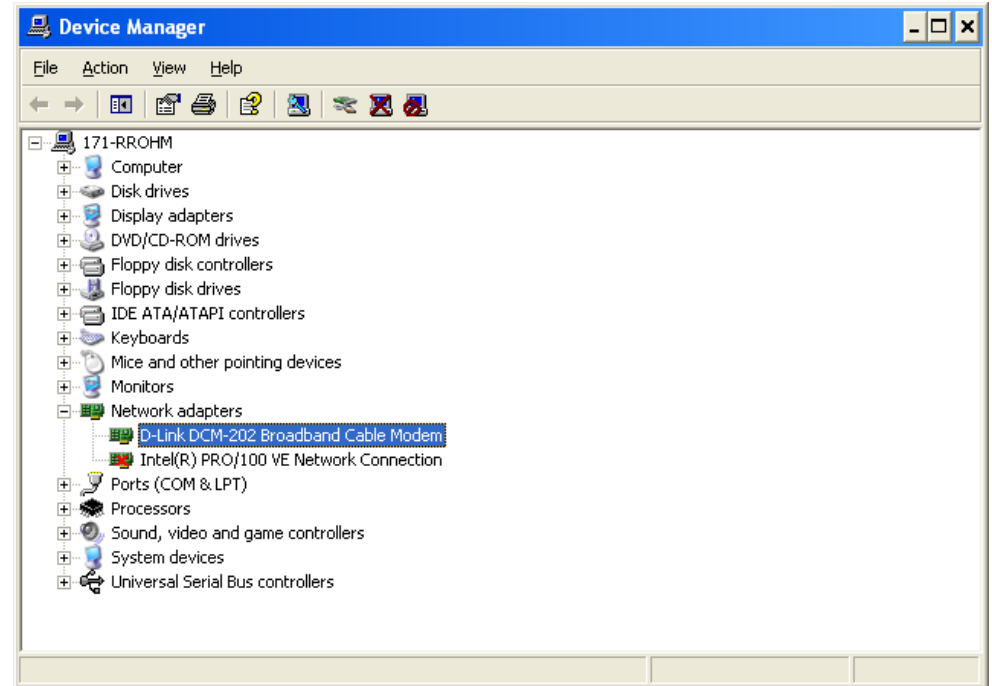
To verify the DCM-202 modem is installed:

Vista™ Users: Click on **Start > Control Panel > System**

XP Users: Click on **Start > Control Panel > System > Hardware**

2000 Users: Click on **Start > Settings > Control Panel > System > Hardware**

Click the **Device Manager** tab. Scroll down and click the + sign next to *Network Adapters*. The D-Link modem will appear.



# Troubleshooting

This chapter provides solutions to problems that can occur during the installation and operation of the DCM-202. Read the following descriptions if you are having problems. (The examples below are illustrated in Windows® XP. If you have a different operating system, the screenshots on your computer will look similar to the following examples.)

## **Problem: “I cannot access my e-mail or Internet service.” (USB Only)**

1. Verify that the Power, Cable, and Status, and USB LEDs are lit and not blinking.
2. Verify that the USB LED is green or blinking green.
3. Check all connections:
  - Make sure the coaxial cable is securely connected to the cable jack on the back of the cable modem.
  - Verify that the USB cable is securely plugged into both the cable modem and the computer.
  - Make sure the power adapter is properly plugged into both the cable modem and a wall outlet or surge protector.
4. Power cycle the cable modem by unplugging the power adapter from its electrical outlet and then plugging it back into the outlet. Then try accessing the Internet.
5. Power cycle the computer. To do this:
  - Power off the computer.
  - Unplug the computer from its electrical outlet or surge protector and then plug it back into the electrical outlet or surge protector.
  - Power the computer on.
  - Try accessing the Internet.
6. Call your cable operator to verify that their service is two-way. This cable modem is designed for use with

two-way cable plants.

7. If you are using a cable line splitter so that you can connect the cable modem and a television to the same cable wall jack, try removing the splitter and reconnecting the cables so that the cable modem is connected directly to the cable wall jack. Then try accessing the Internet.

**To release and renew the IP address for the Windows 2000 and XP operating systems:**

1. Click **Start** and select **Programs**, then **Accessories**.
2. Click **Command Prompt**.
3. At the command prompt (C:\), type **ipconfig/release** and press **Enter**. Windows releases the IP address.
4. At the command prompt type **ipconfig/renew**. Windows renews the IP address.
5. At the command prompt (C:\), type **exit** and press **Enter** to return to the Windows desktop.

**Problem: “All of the LEDs on the front of my cable modem look right, but I cannot access the Internet.”**

1. If the Power, Cable, Status, and Eth LEDs are lit and not blinking the cable modem is operating properly. Try shutting down the computer and then turning it back on. This will cause the computer to re-establish communications with your local cable provider.
2. Power cycle the cable modem by removing the power adapter from its outlet and then plugging it back into the outlet. Wait several minutes for the cable modem to re-establish communications with your local cable operator, then try accessing the Internet.
3. Verify that you have installed TCP/IP properly (for Windows 2000 or XP : ipconfig), and that the TCP/IP parameters provided by your local cable provider are correct for your computer.

4. If you are using a cable line splitter so that you can connect the cable modem and a television to the same outlet:

- Try removing the splitter and reconnecting the cables so that the cable modem is connected directly to the cable wall jack.
- Wait several minutes, then try accessing the Internet.

**Problem: “The power on my cable modem goes on and off sporadically.”**

- You might be using the wrong power adapter. Check that the power adapter you are using is the one that came with the cable modem.

**CAUTION:** You must use the supplied power adapter that comes with the DCM-202 cable modem. Using the wrong power adapter can damage the cable modem.



# Technical Specifications

## Compliant Standard

- DOCSIS 1.0
- DOCSIS 1.1
- DOCSIS 2.0

## Interface

- 10/100BASE-T (half/full duplex, auto-sensing) 1 port
- USB Device (12Mbps, full speed mode) 1 port WAN Interface
- F type female 75

## Receiver:

- Demodulation: 64/256QAM
- Max Speed: 38Mbps (64QAM) / 43Mbps(256QAM)
- Frequency Range: 91 to 857 MHz  $\pm$ 30 kHz (Center)
- Bandwidth: 6MHz
- Signal Level: -15dBmV to +15dBmV

## Transmitter:

- Modulation: 64/256QAM TDMA: QPSK, 8QAM, 16QAM, 32QAM, 64QAM S-CDMA: QPSK, 8QAM, 16QAM, 32QAM, 64QAM, 128QAM
- Max Speed: 320, 640, 1280, 2560, 5120kbps (QPSK) 640, 1280, 2560, 5120, 10240kbps (16QAM)
- Frequency Range: 5 to 42MHz (edge to edge)
- Bandwidth: 0.2, 0.4, 0.8, 1.6, 3.2MHz TDMA: 200, 400, 800, 1600, 3200 and 6400 kHz S-CDMA: 1600, 3200 and 6400 kHz
- Signal Level: +8dBmV to +58dBmV (QPSK)+8dBmV to +55dBmV (16QAM) TDMA: +8 to +54 dBmV (32QAM,

64QAM) +8 to +55 dBmV (8QAM, 16QAM) +8 to +58 dBmV (QPSK) S-CDMA:+8 to +53 dBmV (all modulations)

(Output level of CM can automatically controlled by CMTS through power ranging function), Step: 1dB

- Output Return Loss: > 6 dB (5-42 MHz) and (91~857 MHz)

## Max. Number of CPEs:

- 32 (32 MAC addresses)

## Filtering:

- LLC: 16
- IP: 32

## Frequency Search:

- Frequency Cache: 4 entries Frequency
- Channel Plan: 250kHz step

## Number of SID: 16

## Safety:

- EN60950, UL1950, UL1310 (AC-DC adapter)

## EMC:

- EN55022 (Emission), EN55024 (Immunity) FCC Part 15 class B, VCCI Class B

## Power Supply:

- AC-DC Adapter: Linear AC-DC Adapter 110V $\pm$ 10 %, 50/60Hz

- Consumption: 5W (Standby), 6W (operation)

**OSS:**

- Protocol: ICMP/SNMP V1, V2c, V3
- MIB: MIB II / MCNS MIB/Hitron Proprietary MIB

**Environment:**

- Operating temperature: 32°F (0°C) to 104°F (40°C)
- Operating humidity: 10% to 90% (Non condensing)
- Storage temperature: -4°F (-20°C) to 140°F (60°C)

**LED:**

- Power, Cable, Status, Ethernet USB'

**Dimensions (without AC Adapter):**

- 120mm(W) x 142mm(H) x 30mm(D); without Stand (Approximately)

**Weight:**

- 0.3kg(Approximately)

# Warranty

Subject to the terms and conditions set forth herein, D-Link Systems, Inc. (“D-Link”) provides this Limited Warranty:

- Only to the person or entity that originally purchased the product from D-Link or its authorized reseller or distributor, and
- Only for products purchased and delivered within the fifty states of the United States, the District of Columbia, U.S. Possessions or Protectorates, U.S. Military Installations, or addresses with an APO or FPO.

## **Limited Warranty:**

D-Link warrants that the hardware portion of the D-Link product described below (“Hardware”) will be free from material defects in workmanship and materials under normal use from the date of original retail purchase of the product, for the period set forth below (“Warranty Period”), except as otherwise stated herein.

- Hardware (excluding power supplies and fans): One (1) year
- Power supplies and fans: One (1) year
- Spare parts and spare kits: Ninety (90) days

The customer’s sole and exclusive remedy and the entire liability of D-Link and its suppliers under this Limited Warranty will be, at D-Link’s option, to repair or replace the defective Hardware during the Warranty Period at no charge to the original owner or to refund the actual purchase price paid. Any repair or replacement will be rendered by D-Link at an Authorized D-Link Service Office. The replacement hardware need not be new or have an identical make, model or part. D-Link may, at its option, replace the defective Hardware or any part thereof with any reconditioned product that D-Link reasonably determines is substantially equivalent (or superior) in all material respects to the defective Hardware. Repaired or replacement hardware will be warranted for the remainder of the original Warranty Period or ninety (90) days, whichever is longer, and is subject to the same limitations and exclusions. If a material defect is incapable of correction, or if D-Link determines that it is not practical to repair or replace the defective Hardware, the actual price paid by the original purchaser for the defective Hardware will be refunded by D-Link upon return to D-Link of the defective Hardware. All Hardware or part thereof that is replaced by D-Link, or for which the purchase price is refunded, shall become the property of D-Link upon replacement or refund.

## **Limited Software Warranty:**

D-Link warrants that the software portion of the product (“Software”) will substantially conform to D-Link’s then current functional specifications for the Software, as set forth in the applicable documentation, from the date of original retail purchase of the Software for a period of ninety (90) days (“Software Warranty Period”), provided that the Software is properly installed on approved hardware and operated as contemplated in its documentation. D-Link further warrants that, during the Software Warranty Period, the magnetic media on which D-Link delivers the Software will be free of physical defects. The customer’s sole and exclusive remedy and the entire liability of D-Link and its suppliers under this Limited Warranty will be, at D-Link’s option, to replace the non-conforming Software (or defective media) with software that substantially conforms to D-Link’s functional specifications for the Software or to refund the portion of the actual purchase price paid that is attributable to the Software. Except as otherwise agreed by DLink in writing, the replacement Software is provided only to the original licensee, and is subject to the terms and conditions of the license granted by D-Link for the Software. Replacement Software will be warranted for the remainder of the original Warranty Period and is subject to the same limitations and exclusions. If a material non-conformance is incapable of correction, or if D-Link determines in its sole discretion that it is not practical to replace the non-conforming Software, the price paid by the original licensee for the non-conforming Software will be refunded by D-Link; provided that the non-conforming Software (and all copies thereof) is first returned to D-Link. The license granted respecting any Software for which a refund is given automatically terminates.

**Non-Applicability of Warranty:**

The Limited Warranty provided hereunder for Hardware and Software portions of D-Link’s products will not be applied to and does not cover any refurbished product and any product purchased through the inventory clearance or liquidation sale or other sales in which D-Link, the sellers, or the liquidators expressly disclaim their warranty obligation pertaining to the product and in that case, the product is being sold “As-Is” without any warranty whatsoever including, without limitation, the Limited Warranty as described herein, notwithstanding anything stated herein to the contrary.

**Submitting A Claim:**

The customer shall return the product to the original purchase point based on its return policy. In case the return policy period has expired and the product is within warranty, the customer shall submit a claim to D-Link as outlined below:

- The customer must submit with the product as part of the claim a written description of the Hardware defect or Software nonconformance in sufficient detail to allow DLink to confirm the same, along with proof of purchase of the product (such as a copy of the dated purchase invoice for the product) if the product is not registered.
- The customer must obtain a Case ID Number from D-Link Technical Support at 1-877-453-5465, who will attempt to assist the customer in resolving any suspected defects with the product. If the product is considered defective, the customer must obtain a Return Material Authorization (“RMA”) number by completing the RMA form and entering the assigned Case ID Number at <https://rma.dlink.com/>.
- After an RMA number is issued, the defective product must be packaged securely in the original or other suitable shipping package to ensure that it will not be damaged in transit, and the RMA number must be prominently marked on the outside of the package. Do not include any manuals or accessories in the shipping package. DLink will only replace the defective portion of the product and will not ship back any accessories.

- The customer is responsible for all in-bound shipping charges to D-Link. No Cash on Delivery (“COD”) is allowed. Products sent COD will either be rejected by D-Link or become the property of D-Link. Products shall be fully insured by the customer and shipped to D-Link Systems, Inc., 17595 Mt. Herrmann, Fountain Valley, CA 92708. D-Link will not be held responsible for any packages that are lost in transit to D-Link. The repaired or replaced packages will be shipped to the customer via UPS Ground or any common carrier selected by D-Link. Return shipping charges shall be prepaid by D-Link if you use an address in the United States, otherwise we will ship the product to you freight collect. Expedited shipping is available upon request and provided shipping charges are prepaid by the customer. D-Link may reject or return any product that is not packaged and shipped in strict compliance with the foregoing requirements, or for which an RMA number is not visible from the outside of the package. The product owner agrees to pay D-Link’s reasonable handling and return shipping charges for any product that is not packaged and shipped in accordance with the foregoing requirements, or that is determined by D-Link not to be defective or non-conforming.

### **What Is Not Covered:**

The Limited Warranty provided herein by D-Link does not cover:

Products that, in D-Link’s judgment, have been subjected to abuse, accident, alteration, modification, tampering, negligence, misuse, faulty installation, lack of reasonable care, repair or service in any way that is not contemplated in the documentation for the product, or if the model or serial number has been altered, tampered with, defaced or removed; Initial installation, installation and removal of the product for repair, and shipping costs; Operational adjustments covered in the operating manual for the product, and normal maintenance; Damage that occurs in shipment, due to act of God, failures due to power surge, and cosmetic damage; Any hardware, software, firmware or other products or services provided by anyone other than D-Link; and Products that have been purchased from inventory clearance or liquidation sales or other sales in which D-Link, the sellers, or the liquidators expressly disclaim their warranty obligation pertaining to the product.

While necessary maintenance or repairs on your Product can be performed by any company, we recommend that you use only an Authorized D-Link Service Office. Improper or incorrectly performed maintenance or repair voids this Limited Warranty.

### **Disclaimer of Other Warranties:**

EXCEPT FOR THE LIMITED WARRANTY SPECIFIED HEREIN, THE PRODUCT IS PROVIDED “AS-IS” WITHOUT ANY WARRANTY OF ANY KIND WHATSOEVER INCLUDING, WITHOUT LIMITATION, ANY WARRANTY OF MERCHANTABILITY, FITNESS FOR A PARTICULAR PURPOSE AND NONINFRINGEMENT.

IF ANY IMPLIED WARRANTY CANNOT BE DISCLAIMED IN ANY TERRITORY WHERE A PRODUCT IS SOLD, THE DURATION OF SUCH IMPLIED WARRANTY SHALL BE LIMITED TO THE DURATION OF THE APPLICABLE WARRANTY PERIOD SET FORTH ABOVE. EXCEPT AS EXPRESSLY COVERED UNDER THE LIMITED WARRANTY PROVIDED HEREIN, THE ENTIRE RISK AS TO THE QUALITY, SELECTION AND PERFORMANCE OF THE PRODUCT IS WITH THE PURCHASER OF THE PRODUCT.

### **Limitation of Liability:**

TO THE MAXIMUM EXTENT PERMITTED BY LAW, D-LINK IS NOT LIABLE UNDER ANY CONTRACT, NEGLIGENCE, STRICT LIABILITY OR OTHER LEGAL OR EQUITABLE THEORY FOR ANY LOSS OF USE OF THE PRODUCT, INCONVENIENCE OR DAMAGES OF ANY CHARACTER, WHETHER DIRECT, SPECIAL, INCIDENTAL OR CONSEQUENTIAL (INCLUDING, BUT NOT LIMITED TO, DAMAGES FOR LOSS OF GOODWILL, LOSS OF REVENUE OR PROFIT, WORK STOPPAGE, COMPUTER FAILURE OR MALFUNCTION, FAILURE OF OTHER EQUIPMENT OR COMPUTER PROGRAMS TO WHICH D-LINK'S PRODUCT IS CONNECTED WITH, LOSS OF INFORMATION OR DATA CONTAINED IN, STORED ON, OR INTEGRATED WITH ANY PRODUCT RETURNED TO D-LINK FOR WARRANTY SERVICE) RESULTING FROM THE USE OF THE PRODUCT, RELATING TO WARRANTY SERVICE, OR ARISING OUT OF ANY BREACH OF THIS LIMITED WARRANTY, EVEN IF D-LINK HAS BEEN ADVISED OF THE POSSIBILITY OF SUCH DAMAGES. THE SOLE REMEDY FOR A BREACH OF THE FOREGOING LIMITED WARRANTY IS REPAIR, REPLACEMENT OR REFUND OF THE DEFECTIVE OR NONCONFORMING PRODUCT. THE MAXIMUM LIABILITY OF D-LINK UNDER THIS WARRANTY IS LIMITED TO THE PURCHASE PRICE OF THE PRODUCT COVERED BY THE WARRANTY. THE FOREGOING EXPRESS WRITTEN WARRANTIES AND REMEDIES ARE EXCLUSIVE AND ARE IN LIEU OF ANY OTHER WARRANTIES OR REMEDIES, EXPRESS, IMPLIED OR STATUTORY.

### **Governing Law:**

This Limited Warranty shall be governed by the laws of the State of California. Some states do not allow exclusion or limitation of incidental or consequential damages, or limitations on how long an implied warranty lasts, so the foregoing limitations and exclusions may not apply. This Limited Warranty provides specific legal rights and you may also have other rights which vary from state to state.

### **Trademarks:**

D-Link is a registered trademark of D-Link Systems, Inc. Other trademarks or registered trademarks are the property of their respective owners.

### **Copyright Statement:**

No part of this publication or documentation accompanying this product may be reproduced in any form or by any means or used to make any derivative such as translation, transformation, or adaptation without permission from D-Link Corporation/D-Link Systems, Inc., as stipulated by the United States Copyright Act of 1976 and any amendments thereto. Contents are subject to change without prior notice.

Copyright 2005-2007 by D-Link Corporation/D-Link Systems, Inc. All rights reserved.

### **CE Mark Warning:**

This is a Class B product. In a domestic environment, this product may cause radio interference, in which case the user may be required to take adequate measures.

### **FCC Statement:**

This equipment has been tested and found to comply with the limits for a Class B digital device, pursuant to part 15 of the FCC Rules. These limits are designed to provide reasonable protection against harmful interference in a residential installation. This equipment generates, uses, and can radiate radio

frequency energy and, if not installed and used in accordance with the instructions, may cause harmful interference to radio communication. However, there is no guarantee that interference will not occur in a particular installation. If this equipment does cause harmful interference to radio or television reception, which can be determined by turning the equipment off and on, the user is encouraged to try to correct the interference by one or more of the following measures:

- Reorient or relocate the receiving antenna.
- Increase the separation between the equipment and receiver.
- Connect the equipment into an outlet on a circuit different from that to which the receiver is connected.
- Consult the dealer or an experienced radio/TV technician for help.

For detailed warranty information applicable to products purchased outside the United States, please contact the corresponding local D-Link office.

Note to CATV System Installer - This reminder is provided to call the CATV systems installer's attention to Section 820-93 of the National Electric Code, which provides guidelines for proper grounding, and in particular, it specifies that the Coaxial cable shield be connected to the grounding system of the building as close to the point of cable entry as practical.

