

QUICK INSTALL GUIDE

DIV-140

VERSION 1.0



D-Link[®]

BROADBAND

System Requirements

- Computers with Windows®, Macintosh®, or Linux-based operating systems and an installed Ethernet Adapter
- Internet Explorer version 6.0 or Netscape Navigator 7.0 or higher (for configuration)

Package Contents

- D-Link DIV-140 VoIP Gateway
- Power Adapter
- CAT5 Ethernet Cable
- RJ-45 to DB-9 Cable
- Four (4) RJ-11 Cables
- CD-ROM with Installation Guide, User Manual, and Special Offers

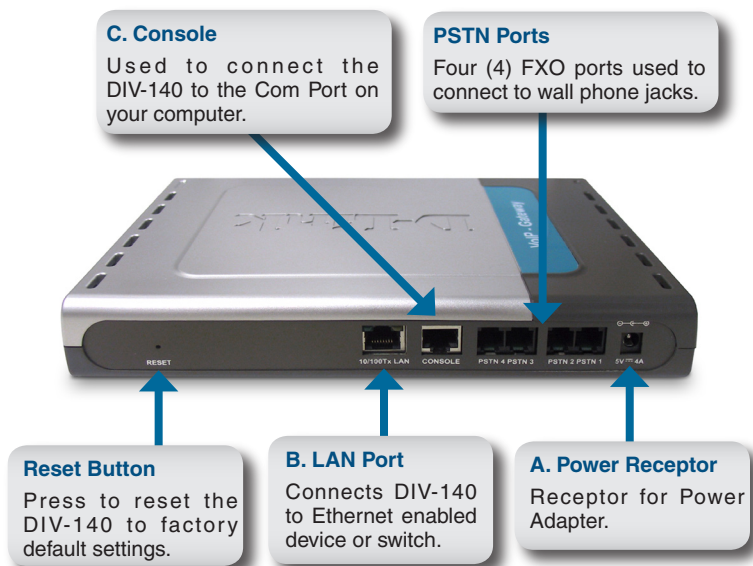


Note: Using a power supply with a different voltage than the one included with the DIV-140 may damage the unit and will void the warranty for this product.

If any of the above items are missing, please contact your reseller.

Connecting the DIV-140 to your network

- A. Connect the power adapter to the receptor on the rear panel of the DIV-140 and then plug the other end of the power adapter to a wall outlet or power strip. The power LED will turn ON to indicate proper operation.
- B. Connect the LAN interface to the hub or switch connected to your internal network using a CAT5 Ethernet cable. The LAN LED on the front of the device should illuminate when a connection is made.
- C. Connect the RJ-45 to DB-9 Console Cable from the Console port on the DIV-140 to the Com Port on the computer that will be used to configure the DIV-140.

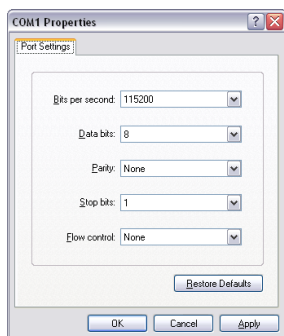


Configuring the DIV-140

A computer on your LAN must be assigned an IP address and subnet mask in the same range as the DIV-140. By default, the DIV-140 is assigned an IP address of **10.0.0.1** with a subnet mask of **255.0.0.0**. It can be configured in two ways, through the web interface or command line interface (CLI).

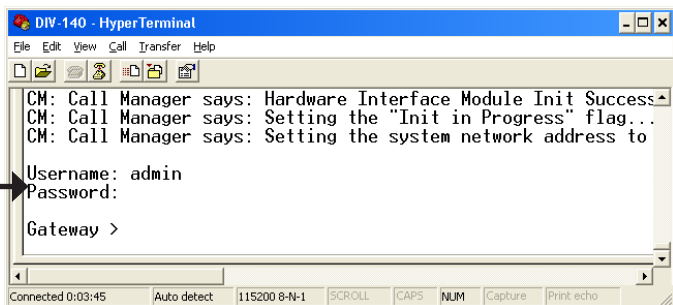
With the console cable connected from the Console port of the DIV-140 to the Com port of your PC, launch the HyperTerminal program:

The terminal settings should be **115200 8-N-1-N**.



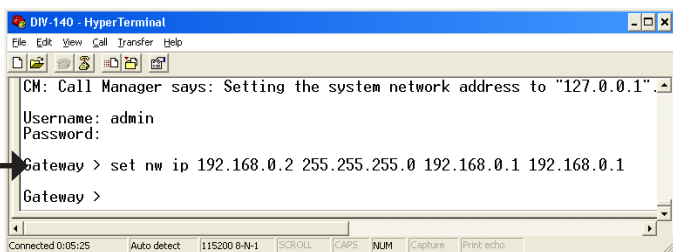
Power on the DIV-140, after the device boots up, login when prompted:

Enter **admin** for the Username and **password** for the Password.



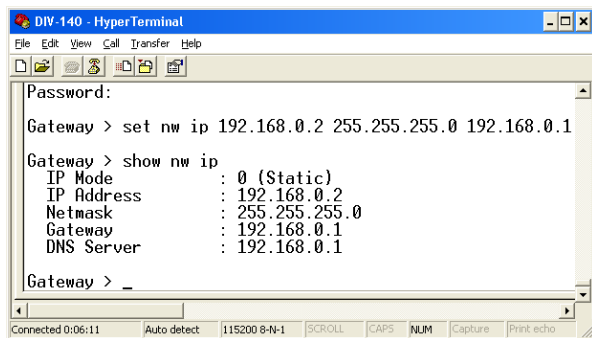
It may be necessary to change the IP address of the DIV-140 to match your local network. To change the IP address of the DIV-140, use the following commands and procedure below:

At the Gateway prompt, enter the command, “**set nw ip [IP address] [subnet mask] [gateway address] [DNS address]**” and press Enter.



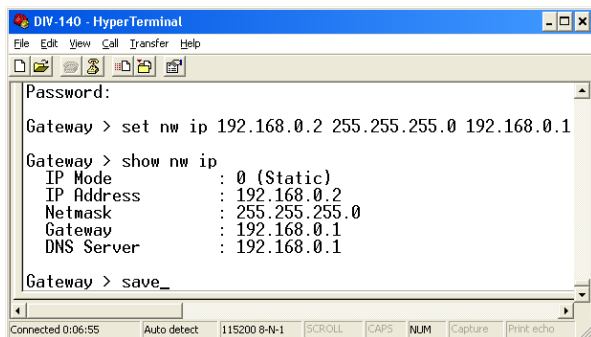
```
CM: Call Manager says: Setting the system network address to "127.0.0.1".
Username: admin
Password:
Gateway > set nw ip 192.168.0.2 255.255.255.0 192.168.0.1 192.168.0.1
Gateway >
```

Verify the IP settings by entering the command, “**show nw ip**” and pressing Enter. The IP settings will display:



```
Password:
Gateway > set nw ip 192.168.0.2 255.255.255.0 192.168.0.1
Gateway > show nw ip
IP Mode       : 0 (Static)
IP Address    : 192.168.0.2
Netmask       : 255.255.255.0
Gateway       : 192.168.0.1
DNS Server    : 192.168.0.1
Gateway > _
```

Save the IP settings by using the “save” command. Press Enter, and the DIV-140 will save the settings and reboot:



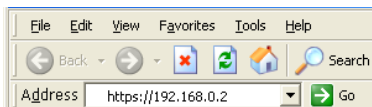
```

DIV-140 - HyperTerminal
File Edit View Call Transfer Help
Password:
Gateway > set nw ip 192.168.0.2 255.255.255.0 192.168.0.1
Gateway > show nw ip
IP Mode       : 0 (Static)
IP Address    : 192.168.0.2
Netmask       : 255.255.255.0
Gateway       : 192.168.0.1
DNS Server    : 192.168.0.1
Gateway > save_

```

After setting the IP address, you can configure the DIV-140 from the web configuration using a computer on your LAN. Open a web browser and browse to the IP address of the DIV-140 using https.

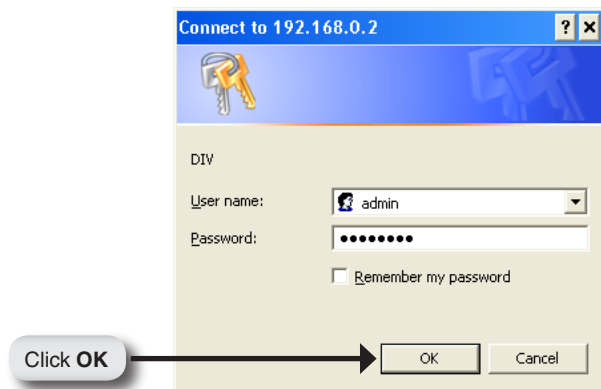
Ex. <https://192.168.0.2>



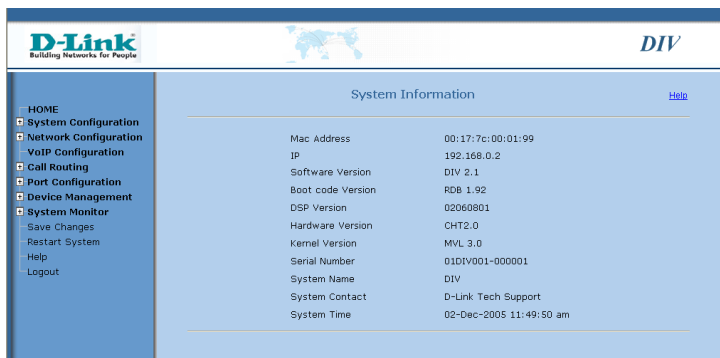
A Security Alert window will appear:



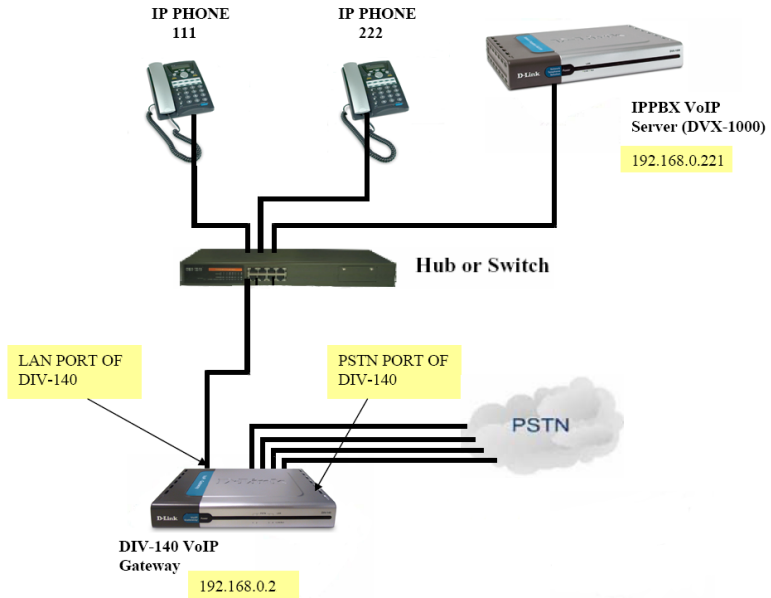
A login box will appear. Enter the user name and password. The default user name is **admin**, and the default password is **password**.



After logging in, the System Information page will appear:



The following figure displays the setup for making VoIP to PSTN calls using the DIV-140:



The configuration settings on the DIV-140 are as follows:

After logging into the DIV-140, browse to the **System Configuration > Device** page:

Verify the Country is set to the correct region and click **Apply**:

The screenshot shows the 'Device Configuration' page in the D-Link web interface. The left sidebar contains a navigation menu with 'System Configuration' expanded to 'Device'. The main content area is titled 'Device Configuration' and includes a 'Country' dropdown menu set to 'USA'. Below this is the 'Access Key Configuration' section with fields for 'Feature Code', 'Speed Dial', and 'Auto Log Off Time' (set to 10 minutes). At the bottom right, there are 'Apply' and 'Cancel' buttons. A callout box with an arrow points to the 'Apply' button.

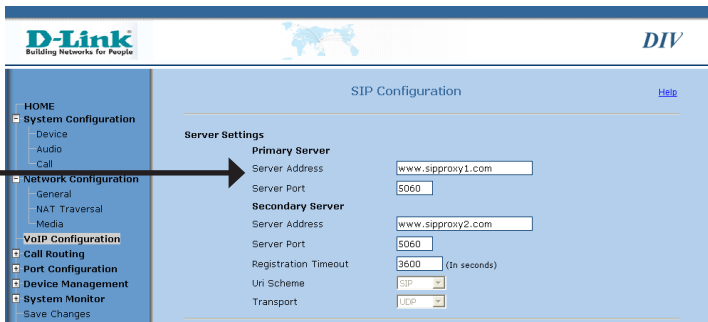
Browse to the **Network Configuration > General** page:

Verify the IP Configuration settings are correct, and click **Apply**:

The screenshot shows the 'Network Configuration - General' page in the D-Link web interface. The left sidebar has 'Network Configuration' expanded to 'General'. The main content area is titled 'Network Configuration' and includes the 'IP Configuration' section with radio buttons for 'Static IP', 'DHCP', and 'PPPoE'. The 'Static IP' option is selected. Below this are input fields for 'IP address' (192.168.0.2), 'Net Mask' (255.255.255.0), and 'Gateway' (192.168.0.1). The 'DNS Server' section has 'Primary' (192.168.0.1) and 'Secondary' (10.0.0.1) fields. The 'PPPoE' section has 'Username' and 'Password' fields. A callout box with an arrow points to the 'Static IP' radio button.

Browse to the **Network Configuration > General** page:

Enter the **VoIP Server IP PBX** IP address or domain name and Server Port. The server port is **5060** by default. Click **Apply**:



D-Link Building Networks for People *DIV*

HOME
System Configuration
 Device
 Audio
 Call
Network Configuration
 General
 NAT Traversal
 Media
VoIP Configuration
 Call Routing
 Port Configuration
 Device Management
 System Monitor
 Save Changes

SIP Configuration [Help](#)

Server Settings

Primary Server

Server Address

Server Port

Secondary Server

Server Address

Server Port

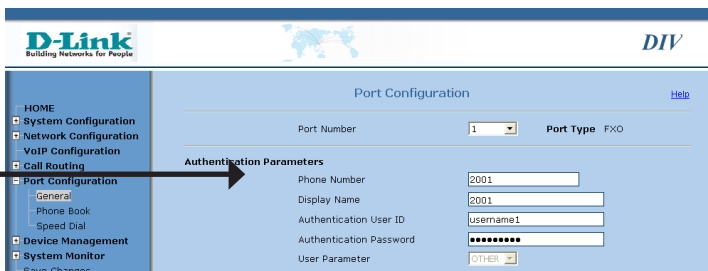
Registration Timeout (in seconds)

Uri Scheme

Transport

Browse to the **Port Configuration > General** page:

The DIV-140 has four (4) PSTN ports numbered 1-4. Select port 1 and configure the **Phone Number** and **Display Name** as 2001. Click **Apply**:



D-Link Building Networks for People *DIV*

HOME
System Configuration
 Device
 Audio
 Call
Network Configuration
 General
 NAT Traversal
 Media
VoIP Configuration
 Call Routing
 Port Configuration
 Device Management
 System Monitor
 Save Changes

Port Configuration [Help](#)

Port Number Port Type FXO

Authentication Parameters

Phone Number

Display Name

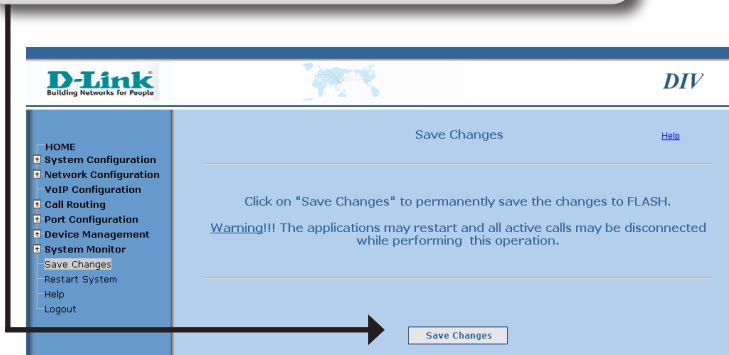
Authentication User ID

Authentication Password

User Parameter

Configure PSTN ports 2-4 similarly, assigning them Phone Number and Display Names of 2002, 2003 and 2004 respectively:

Browse to the Save Changes page and click Save Changes:



The DIV-140 will reboot.

The VoIP server (IPPBX) needs to be configured as follows:

The PSTN Ports (2001-2004) must be added as gateways on the IPPBX. The gateways should be added to the route used by the users of the IPPBX.

When the DIV-140 reboots, it will register with the IPPBX.

Connect PSTN to port 1 of the DIV-140.

To make a VoIP call from **111** to a PSTN phone **437**:

- Pick up the VoIP phone (111) handset and dial **2001#**. This will cause the VoIP Gateway FXO port 2001 to ring twice before going offhook.
- After 2001 goes offhook, you will be connected to the local PBX and will get the PBX dialtone. Dial the PBX extension number **437**.
- The PBX phone 437 will ring. When the user at 437 picks up the phone, the call is established.

Technical Support

D-Link's website contains the latest user documentation and software updates for D-Link products.

U.S. and Canadian customers can contact D-Link Technical Support through our website or by phone.

United States

Telephone

(877) 354-6555

World Wide Web

<http://support.dlink.com>

Canada

Telephone

(800) 361-5265

World Wide Web

<http://support.dlink.ca>



Version 1.0

September 13, 2006

Copyright ©2006 D-Link Corporation/D-Link Systems, Inc. All rights reserved. D-Link and the D-Link logo are registered trademarks of D-Link Corporation or its subsidiaries in the United States and other countries. Other trademarks are the property of their respective owners. Product specifications, size and shape are subject to change without notice, and actual product appearance may differ from that depicted herein.