

D-Link Quick Installation Guide

This product can be set up using any current web browser, i.e., Internet Explorer 6 or Netscape Navigator 6.2.3.



DWL-800AP+
D-Link AirPlus™
Wireless Range Extender

Before You Begin

It's best to use a computer (with an Ethernet adapter) that is connected to a switch for configuring the DWL-800AP+. The default IP address for the DWL-800AP+ is **192.168.0.30** with a Subnet Mask of **255.255.255.0**. You will need to assign your computer a Static IP address within the same range as the DWL-800AP+'s IP address for the purpose of configuring the DWL-800AP+. **See the Manual on the CD-ROM if you need assistance in assigning a Static IP address for your network adapter.**

Check Your Package Contents



DWL-800AP+ Wireless Range Extender



CD-ROM (containing Manual and Warranty)



Ethernet (CAT5 UTP) Cable



5V 2.5A DC Power Adapter

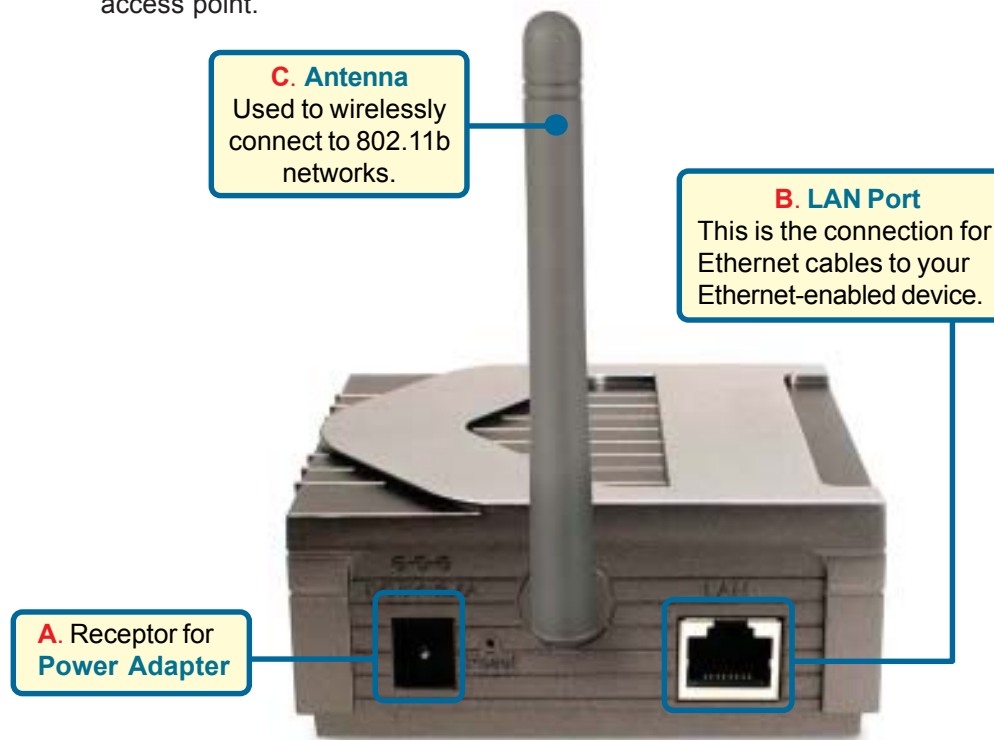


Using a power supply with a different voltage rating will damage and void the warranty of this product.

If any of the above items are missing, please contact your reseller.

1 Connecting The DWL-800AP+ Wireless Range Extender To Your Network

- A. First, connect the power adapter to the **receptor** at the back panel of the DWL-800AP+ and then plug the other end of the power adapter to a wall outlet or power strip. The Power LED will turn **ON** to indicate proper operation.
- B. Using an Ethernet cable, insert one end of the cable to the **LAN port** on the back panel of the DWL-800AP+ and the other end of the cable to a switch. **Note:** You also have the option of connecting the DWL-800AP+ directly to the computer that will be used for configuration. The Link LED light will illuminate to indicate a proper Ethernet connection. (Note: The LAN Port on the DWL-800AP+ is Auto-MDI/MDIX. Meaning you can use a straight-through or crossover-cable to the LAN Port.)
- C. Computers with 802.11b wireless adapters such as the DWL-650+ AirPlus Wireless Cardbus Adapter and the DWL-520+ AirPlus Wireless PCI Adapter can connect to the DWL-800AP+. By default, the DWL-800AP+ is set in repeater mode and will extend the wireless signal from a wireless gateway or access point.



When you have completed the steps in this *Quick Installation Guide*, your connected network should look similar to this:



2 Using The Setup Wizard

Open your Web browser and type **"http://192.168.0.30"** into the URL address box. Then press the Enter or Return key.



The logon pop-up screen will appear.

Type **"admin"** for the username and leave the password field blank.



Click **OK**

2 Using The Setup Wizard (continued)

Once you have logged in, the **Home** screen will appear.

Click **Run Wizard**

Device Information			
Firmware Version 1.4, Tools, 24 Dec 2012			
Ethernet			
MAC Address	8002280C	* Send	Good Packets 14
IP Address	192.168.0.30		Dropped Packets 0
Subnet Mask	255.255.255.0		Good Packets 70
Gateway	0.0.0.0	* Receive	Dropped Packets 0
Wireless			
MAC Address	8002280C	* Send	Good Packets 35
SSID	Default		Dropped Packets 0
Encryption	Disabled	* Receive	Good Packets 8
Channel	6		Dropped Packets 0
AP Mode	AP		

You will see the following screens.

Click **Next**

Welcome to the DWL-800AP+ Setup Wizard. The Wizard will guide you through these four quick steps. Begin by clicking on **Next**.

- Step 1. Set your new password
- Step 2. Set the Operating mode, SSID, and Channel
- Step 3. Set Encryption
- Step 4. Restart

Step 1 - Set up your new password. You have the option to establish a password.

Click **Next**

Step 2 - Wireless Setup
By default the DWL-800AP+ is set to Repeater mode.

To repeat the wireless signal, enter the 12 digit Ethernet MAC Address of the wireless router or access point.

Click **Next**

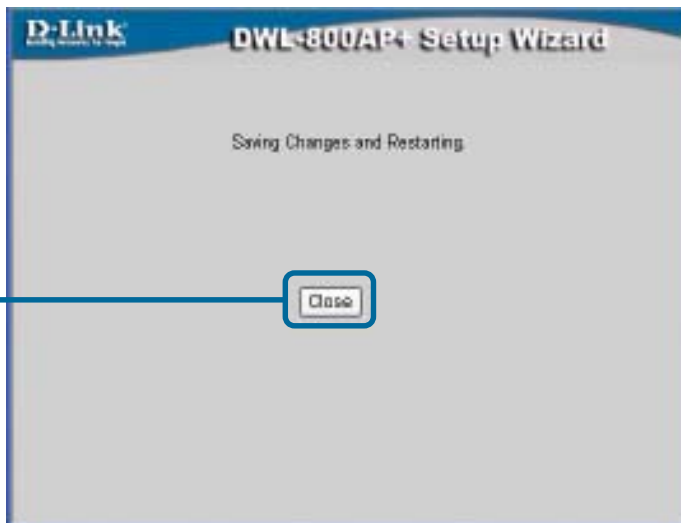
Step 3 - Encryption
The DWL-800AP+ is capable of three levels of wireless encryption - 64-bit, 128-bit, and 256-bit. **By default the encryption is disabled.** You can change the encryption settings for more secure wireless communication.

Click **Next**

3 Your Setup is Complete!



Click **Restart**




Click **Close**

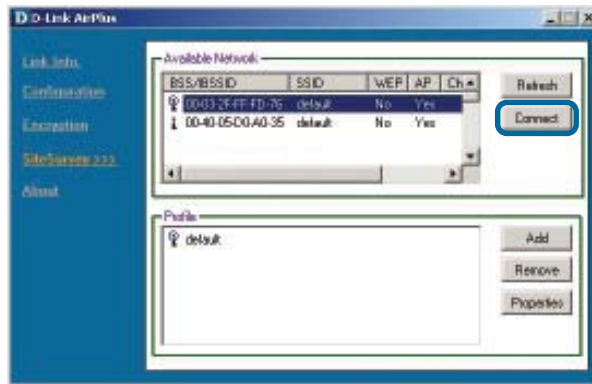
You will be returned to the **Home** tab. Please close all internet browser windows.

4

Connecting to the DWL-800AP+

Using the *AirPlus* Wireless Utility included with the *AirPlus* Adapters, you can browse and connect to the DWL-800AP+.

 The MAC address of the DWL-800AP+ is listed on the product sticker on the bottom of the unit.



The Link Info page of the *AirPlus* utility will show the connection status between the DWL-800AP+ and *AirPlus* wireless adapter.



Technical Support

You can find the most recent software and user documentation on the **D-Link** website.

D-Link provides free technical support for customers within the United States for the duration of the warranty period on this product.

U.S. customers can contact **D-Link** technical support through our web site or by phone.

D-Link Technical Support over the Telephone:

(877) 453-5465

24 hours a day, seven days a week

D-Link Technical Support over the Internet:

<http://support.dlink.com>

