

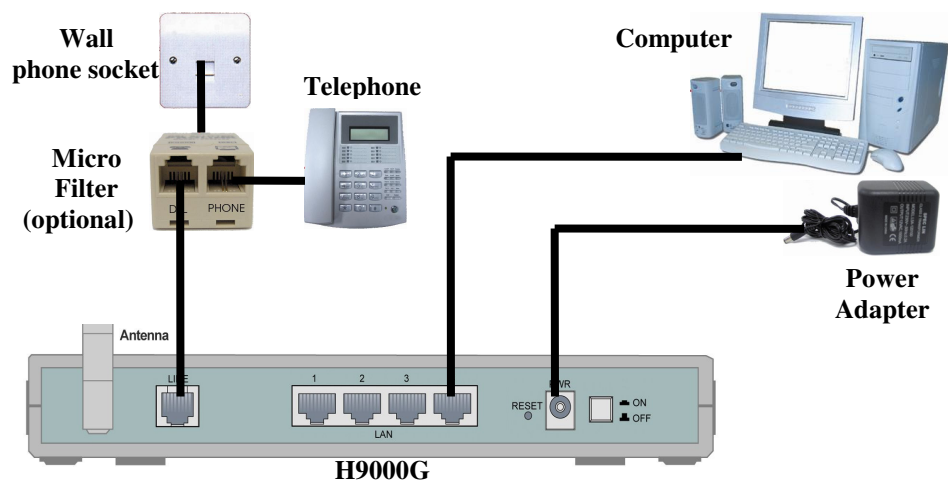
# Quick Installation Guide

## PROLiNK Hurricane 9000G

### Wireless 802.11g ADSL Ethernet Modem Router

#### Version 1.0

### Step 1 Hardware Connection



- 1.1 Ensure that the PC/Notebook & ADSL Modem are power off
- 1.2 Connect one end of the RJ45 (Ethernet) cable to the LAN port of the computer.
- 1.3 Connect the other end of RJ45 cable to the ADSL Modem.
- 1.4 Connect one end of RJ11 (Telephone) cable to the ADSL port (marked Line) on the ADSL Modem.
- 1.5 Connect the other end of RJ11 cable into the phone socket, which has the ADSL service activated, or the ADSL port of a Micro-filter whichever is applicable
- 1.6 Connect power adapter to the power socket.

### Step 2 Configuring the Computer / Notebook

**Important!** Please ensure that the PC's Network Card TCP/IP Properties and the Internet Browser proxy are configured correctly

It is also assumed that the computer/notebook has the Ethernet Network card installed.

#### 2a Configure TCP/IP settings for Windows® 95 / 98 / 98SE / ME

- Go To Control Panel → Network → Select TCP/IP of your LAN card → Properties
- Go to IP Address → Select Obtain an IP address automatically
- Click OK and the system will prompts to Restart the Computer

#### 2b Configure TCP/IP settings for Windows® 2000 / XP

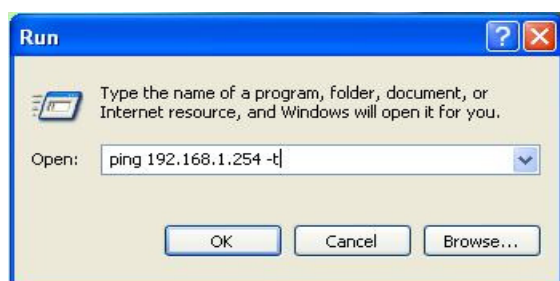
- Go to Control Panel → Select Network and Internet Connections → Click on the Network Connections icon.
- Select the Local Area Connection icon for the applicable Ethernet adapter → Right Click and select Properties
- Select Internet Protocol (TCP/IP) → Properties
- Under General → Select Obtain an IP address automatically and Obtain DNS server address automatically
- Click OK

#### 2c Disable Proxy Settings

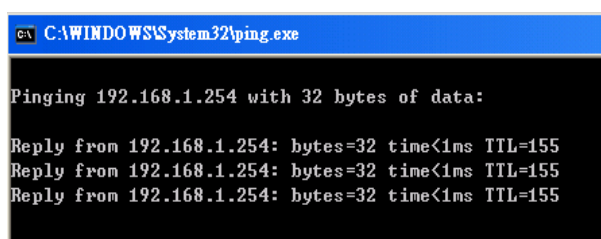
- Windows Desktop > right click **Internet Explorer (IE)** > click **Properties** > click **Connections** tab > select **Never dial a connection** > click **LAN Settings...** > remove the tick (if there is) for option box for Proxy server > click **OK** > click **OK** again to exit

#### 2.1 Verifying Your Local Network Connection with H9000G

From Start > Run > Enter ping 192.168.1.254 -t > Click OK



If the connection has been established, you will receive replies from the router.



### Step 3 Configuring H9000G using Web-Based

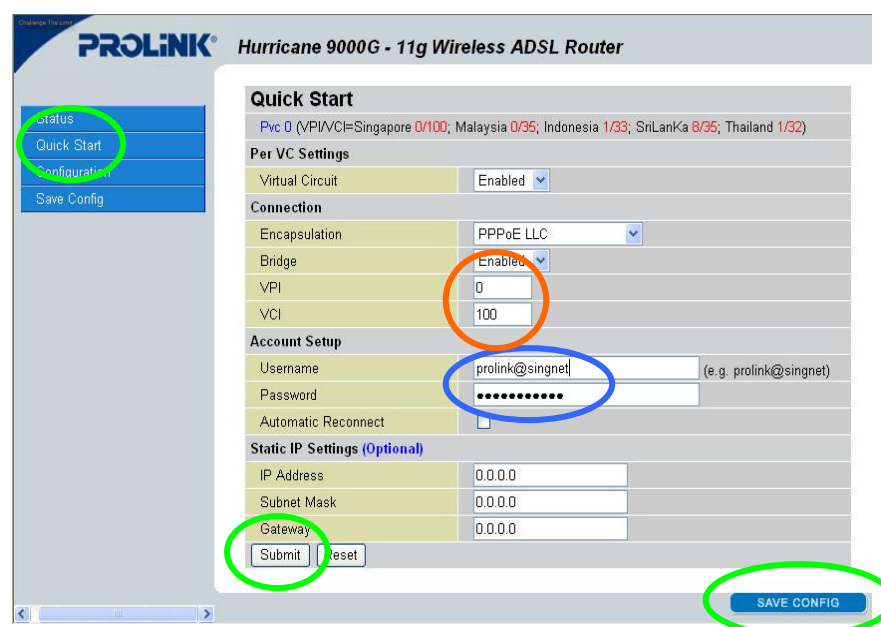
**Note:** To configure this device, you must have IE 5.0 / Netscape 4.5 or above installed

- a Start your Web Browser > key in <http://192.168.1.254> at the URL/Address field
- b Key in the User name: **admin** and Password: **password** > click on the **OK** button to logon to the router



- c In the **Quick Start** page, refer to your ISP Broadband service letter and key in your Username: eg. **prolink@singnet** and Password: **\*\*\*\*\*** > click **Submit** > **Save Config** > **Submit** again

The rest of the settings you can leave them as default



Please enter the VPI/VCI settings according to your local ADSL ISP ATM VC (e.g. Singapore: **VPI/VCI=0/100**; Malaysia: **VPI/VCI=0/35**; Indonesia: **VPI/VCI=1/33**; SriLanka: **VPI/VCI=8/35**; Thailand: **VPI/VCI=1/32**)

#### 3.1 WAN / Internet Connection Status

To verify that you are connected to the internet , Go to **Status** > **WAN** > an IP address should be assigned to you

WAN		
IP Address	Subnet Mask	MAC Address
210.24.206.112	255.255.255.0	00:04:ED:26:6E:FD

#### 3.2 Wireless Configuration

##### a. Without WEP Security (Default)

Go to **Configuration** > **Wireless** > **Basic Settings**  
 The default SSID (Wireless workgroup name) is **Prolink11g**. You can change it to any unique name for identification.  
 The default Channel is 6. All devices communicating with the device must use the same channel.  
 The security (WEP Encryption) is set to Disabled by default.  
 Wireless client/PC should be able to connect to the Hurricane 9000G without doing any changes of these settings

##### b. To Set Security (WEP Encryption)

Security : **Enable Encryption**  
 Key Length : **64 bit Hex** or **128 bit Hex**

Keys: Enter the **Key**, you may want to enter **Key 1** as only one single key will be use for every wireless connection. (10 HEX Characters for 64 bit or 26 HEX Characters for 128 bit)

*Use Hexadecimal characters only (the numbers 0-9 and letters a-f)*

The rest of the settings you can leave them as default

Click **Submit** > **Save Config** > **Submit** again to save your configurations

**PROLINK Hurricane 9000G - 11g Wireless ADSL Router**

WLAN Driver(Marconi) : v3.0.5  
Boot Loader Version : v3.1.1  
Upper MAC Version : M\_UM\_3.1.20  
Lower MAC Version : M2\_LM\_D2959SC\_3.1.41  
AP BSSID: 00:04:ED:26:72:8F

SSID: Prolink11g  
Channel: 11

Security:  Enable Encryption  Disable Encryption  
Key Length:  64 bit (Hex)  128 bit (Hex)  
Auth Type: Open System

Passphrase: (The Passphrase should be fewer than 16 characters. You may manually enter you key below and leave Passphrase blank)

Key 1: 1234567890 (5 bytes for 64 bit or 13 bytes for 128 bit)  
Key 2: abcdefghijkl  
Key 3: 0e33fb2b1f  
Key 4: cf12611e1d

Secret AP: Disable (Hide SSID)

**Note:** 128-bit encryption is more secure than 64-bit encryption, but due to increased complexity, 128-bit encryption may decrease network performance.

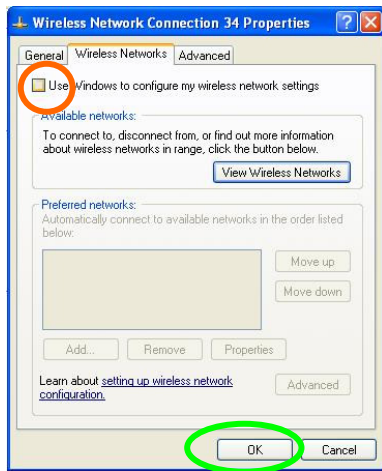
**Step 4 PROLiNK Wireless Receiver Configuration**

**4.1 PROLiNK WG1000 PCMCIA 802.11G Wireless Card**

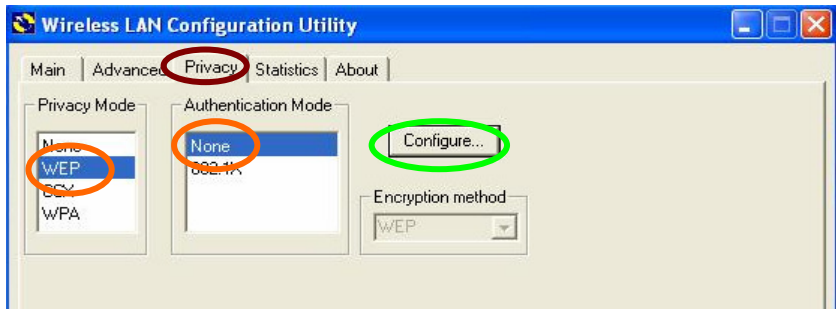
a After installing the Driver and Utility Program, you will see the Wireless LAN utility icon on your desktop



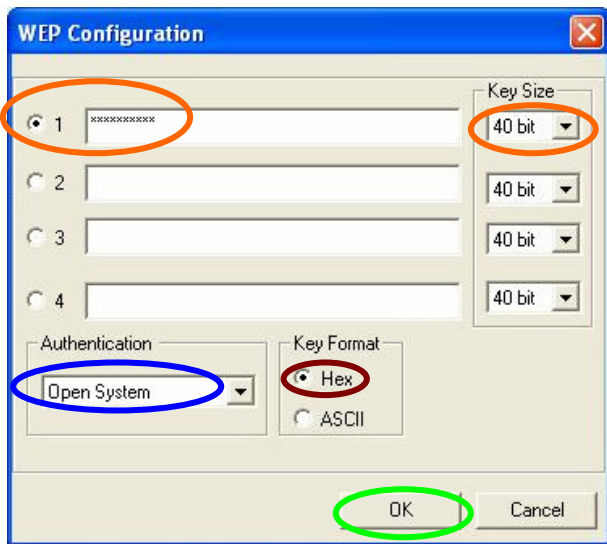
b For Win XP user , go to Ctrl Panel > Network Connections > LAN or High-Speed Internet > Right Click the Wireless Network Connection > Properties > Wireless Networks > Uncheck "Use Windows to configure my wireless network settings" > OK



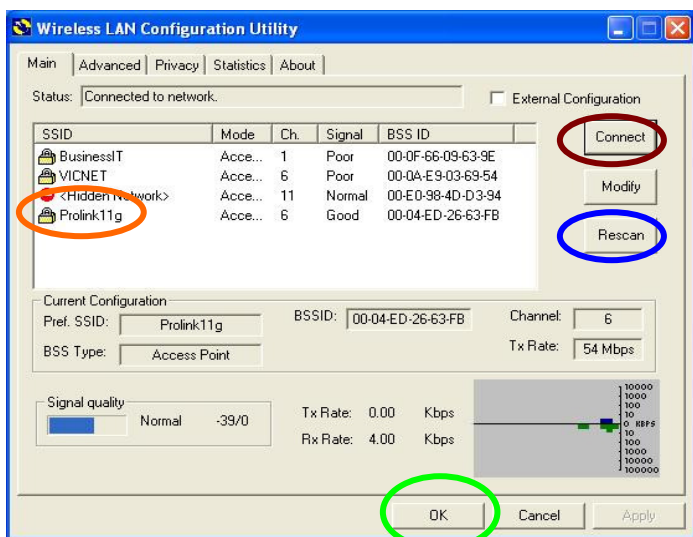
c Double-click the **802.11g Wireless LAN Utility** icon on your desktop  
If you have enable the security encryption in the H9000G > Click **Privacy tab > WEP > None > Configure...**



d For e.g. if your H9000G is enabled with **64bit (Hex)** encryption > **Key #1 > Password : 1234567890**  
In the WEP Configuration > **Key Size : 40 bit (64bit)** > Select **1** > **Key in password : 1234567890** > **Authentication : Open System** > **Key Format : Hex** > **OK**



e Click **Main tab** > click **Rescan** > under SSID column: select your H9000G SSID (default:**Prolink11g**) > click **Connect** > click **OK**



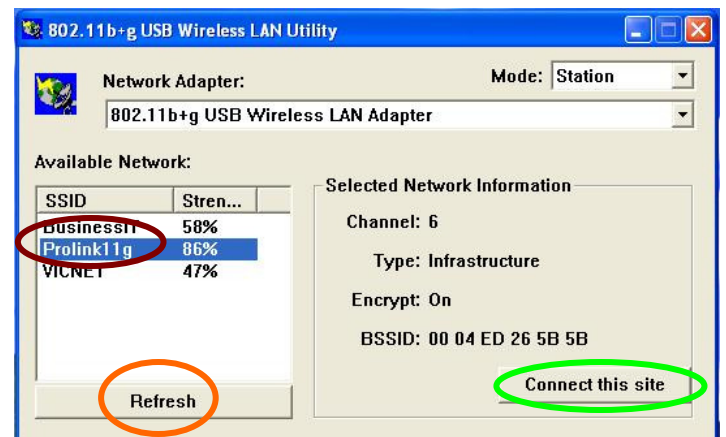
**4.2 PROLiNK WG2000 USB 802.11G Wireless Adapter**

a After installing the Driver and Utility Program, you will see the Wireless LAN utility icon on your desktop



b For Win XP user , refer to Step 4.1b first.

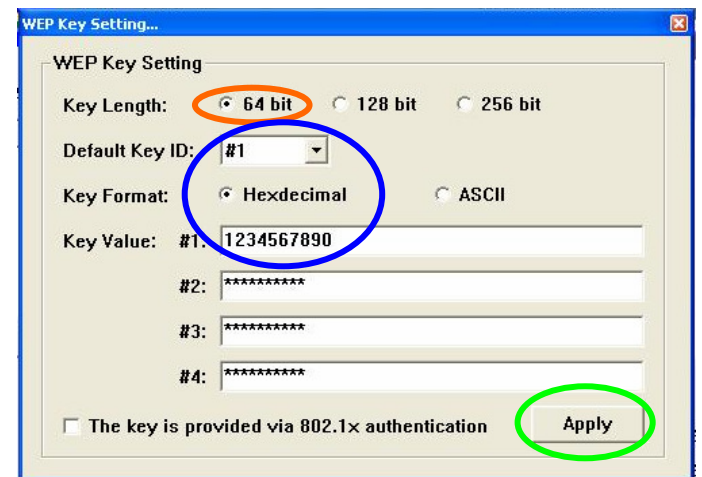
c Double-click the **802.11b+g USB Wireless LAN Utility** icon on your desktop  
Click **Refresh** > under SSID column: select your H9000G SSID (default:**Prolink11g**) > click **Connect this site**



d If you have enable the security encryption in the H9000G and you see the below message box (Use Previous WEP Setting) > Select **No**



e For e.g. if your H9000G is enabled with **64bit (Hex)** encryption > **Key #1 > Password : 1234567890**  
In the WEP Key Setting > Click **Change** > **Key Length : 64bit** > **Default Key ID : #1** > **Key Format : Hexadecimal** > **Key Value : #1 : 1234567890** > **Apply**



f Once connected , it will show the SSID connected (default:**Prolink11g**) and indicate the **Signal Strength** and **Link Quality** of the connection

