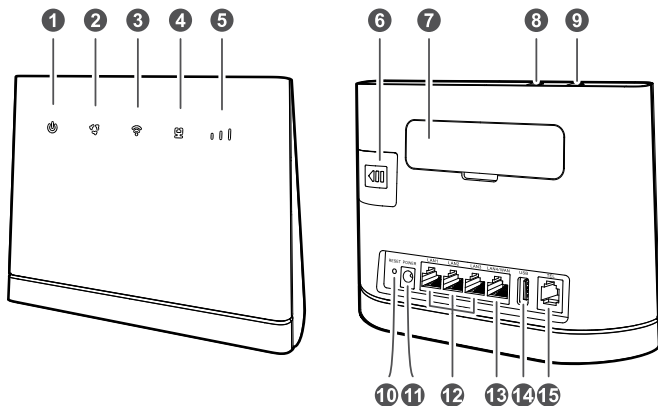


B315 LTE CPE

Quick Start



1 Getting to know your B315



Power indicator

- On: the B315 is powered on.
- Off: the B315 is powered off.








Network mode indicator

- Steady cyan: connected to an LTE network.
- Steady green: connected to an Ethernet network.
- Steady red:
 - The SIM card is not recognized, the PIN has not been entered, or the PIN verification failed.
 - Failed to connect to a mobile network or an Ethernet network.



Wi-Fi/WPS indicator

- Steady on: Wi-Fi turned on.
- Blinking: a WPS connection is being set up.
- Off: Wi-Fi turned off.

4		LAN/WAN indicator	<ul style="list-style-type: none"> ● Steady on: <ul style="list-style-type: none"> – At least one of the LAN ports is connected to a device. – WAN port is connected to an Ethernet port. ● Blinking: data is being transmitted through a LAN port or the WAN port. ● Off: <ul style="list-style-type: none"> – No device is connected to a LAN port. – WAN port is not connected to an Ethernet port.
5		Signal strength indicator	<ul style="list-style-type: none"> ● On: signal reception available (more bars mean better reception). ● Off: no reception.
6	SIM card slot	Install a standard SIM card to access the Internet via an LTE data connection.	
7	External antenna port	Connect to external antenna after remove the cover.	
8	WPS button	Press and hold for 2 or more seconds until  is blinking to active WPS connection when Wi-Fi is turned on.	
9	Power button	Press and hold for about 3 seconds to power the B315 on or off.	
10	Reset button	<p> Restoring the default settings of the B315 will erase all previous settings.</p> <p>When the B315 is powered on, use a sharply pointed object to press and hold for about 3 seconds until  indicator is blinking to restore the B315 to its factory settings. After the factory defaults are restored, the B315 will restart automatically.</p>	
11	Power port	Connect to compatible power adapter.	
12	LAN port	Connect to computer, switch, or other LAN device.	
13	LAN4/WAN port	<ul style="list-style-type: none"> ● Working as a LAN port when connected to a computer, switch, or other LAN device. ● Working as a WAN port when connected to an Ethernet port on the wall. 	

14 USB port

Connect to a USB storage device, or USB printer.

- i** This port cannot be connected to USB host devices such as computers.
 - i** The B315 supports USB 1.0/USB 2.0 storage devices in FAT32 format of up to 32 GB. Storage devices with power supply requirements exceeding USB standards may not work properly. It is recommended that you prepare an external power supply in these cases.
 - i** The B315 is compatible with samba-supported USB printers.
-

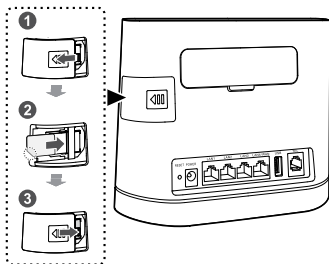
15 Telephone port Not in use.

2 Installation

Scenario 1: Accessing the Internet using an LTE network

Step 1: Installing the SIM card

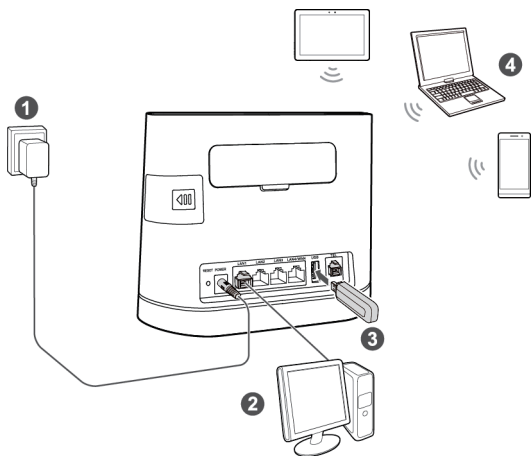
1. Slide off the card slot cover.
2. Insert the SIM card into the card slot. Ensure that the beveled edge of the SIM card aligns with that of the card slot.
3. Close the card slot cover.



- i** Do not remove the SIM card when it is in use. Doing so will affect the performance of your B315 and data stored on the SIM card may be lost. This may damage the SIM card memory, rendering it unusable.

Step 2: Connecting cables

- i** ● To prevent interference caused by radio signals, place the B315 at least 1 meter (3.28 feet) away from telephone and other electrical devices.
- Use only the power adaptor supplied by the manufacturer for this device. The B315's power adaptor model is HW-120100XYW. X and Y represent letters or numbers that vary by region. For details about the specific adaptor model, contact an authorized dealer.



Once connected to a power outlet, the B315 automatically powers on.

Warning: This equipment may not work when mains power fails.

1 Power adapter

2 Computer

3 USB flash drive

4 Laptop, tablet, or smart phone

Optional: Installing the external antenna

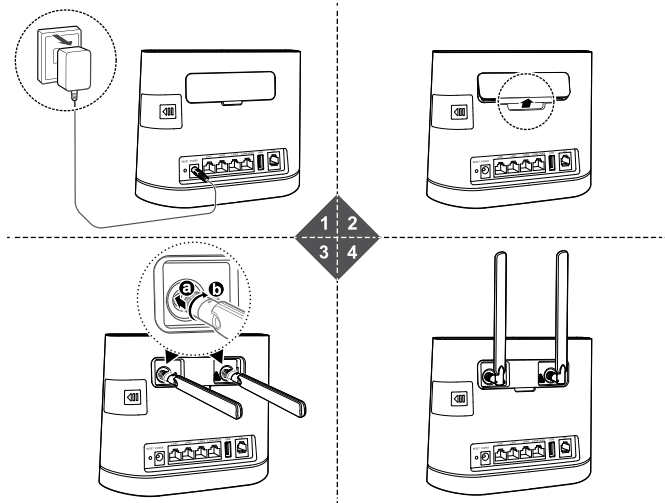
In areas with poor reception, connect external antenna to the B315's external antenna port to improve signal reception.

i The external antenna is an optional accessory, and may not be included in the packaging box. If required, please contact your local dealer to purchase it.

! Before installing the external antenna, ensure that the B315 is powered off and disconnected from the power outlet.

- Only use the external antenna indoors, and do not use it during thunderstorm.
- Do not change another unexpected antenna unless manufacturer provide.

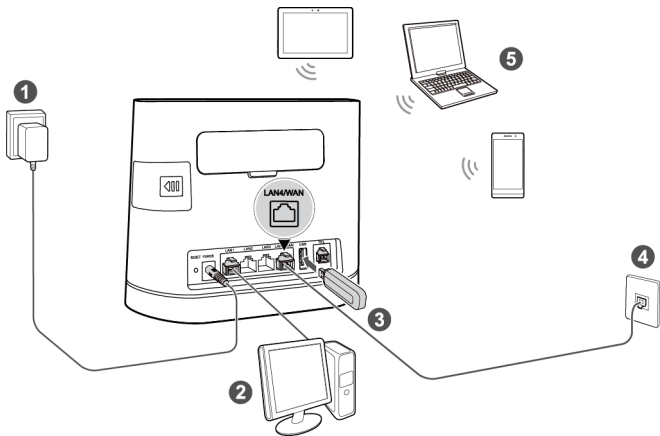
1. Power off the B315 and disconnect it from the power outlet.
2. Use a small tool, such as a key or a paper clip, to remove the cover from the antenna ports. Keep the cover in a safe place.
3. Screw external antenna fully into the antenna port.
4. Keep external antenna upward to get better signal.



Scenario 2: Accessing the Internet using Ethernet

Connect the B315 to a wall-mounted Ethernet port or an ADSL modem for Internet access.

- i** To prevent interference caused by radio signals, place the B315 at least 1 meter (3.28 feet) away from telephone and other electrical devices.
- Use only the power adaptor supplied by the manufacturer for this device. The B315's power adaptor model is HW-120100XYW. X and Y represent letters or numbers that vary by region. For details about the specific adapter model, contact an authorized dealer.



Once connected to a power outlet, the B315 automatically powers on.

Warning: This equipment may not work when mains power fails.

- | | | | | | |
|----------|---------------------------|----------|--------------------------------|----------|-----------------|
| 1 | Power adapter | 2 | Computer | 3 | USB flash drive |
| 4 | Ethernet port on the wall | 5 | Laptop, tablet, or smart phone | | |

3 Setting up a Wi-Fi connection

i Make sure your client (computer, tablet, or smart phone) also supports Wi-Fi.

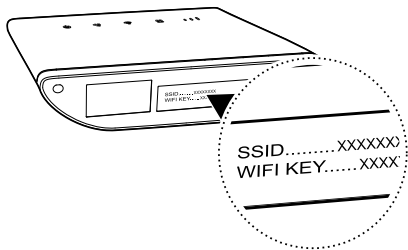
Step 1: Enabling Wi-Fi on the B315

When the  indicator is steady on, the Wi-Fi function of the B315 is turned on.

i For details about how to manually enable or disable the Wi-Fi function, refer to the WLAN settings section of the help information on the web management page.

Step 2: Recording the SSID and Wi-Fi key

The default SSID and Wi-Fi key are printed on the B315's bottom label.



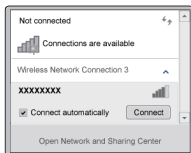
i To prevent unauthorized parties from accessing your Wi-Fi network, it is recommended that you change the SSID and Wi-Fi key from time to time. For details, see the help information on the web management page.

Step 3: Setting up a Wi-Fi connection on your client

● Method 1: Setting up a Wi-Fi connection manually

1. From your Wi-Fi enabled client, scan for wireless networks in your area.
2. Connect to the network name that matches the SSID found on the device label.
3. When prompted for password, enter the Wi-Fi Key found on the device label. (The Wi-Fi key is case sensitive.) Your client will notify you when it is connected.

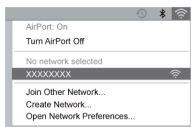
Windows 7



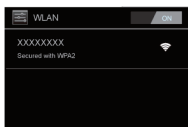
Windows 8



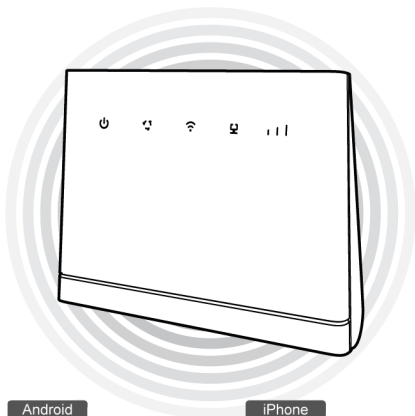
Mac



Android




iPhone



● Method 2: Setting up a Wi-Fi connection through WPS


If the client supports WPS, you can set up a WPS connection as follows:

1. Ensure that Wi-Fi is enabled on the client.
2. Press and hold the WPS button for 2 or more seconds. The  indicator then starts blinking.
3. Activate the WPS connection on the client in 2 minutes.



For instructions about how to enable a WPS connection on the client, see the client's user guide.

4 Configuring your B315

1. After a client is connected to the B315 through Wi-Fi or LAN port, launch a browser on the client and visit web management page ([http:// 192.168.1.254](http://192.168.1.254)).
 2. Enter the user name (**admin** by default) and password (**admin** by default) to log in to the web management page.
 3. Follow the quick setup wizard to check or set network connection parameters step by step. For details, see the help information on the web management page.
-  ● To protect your account, change the password after your first login. For details, see the help information on the web management page.
 - If you modify the SSID and Wi-Fi key, you must set up the Wi-Fi connection on the client again.

Once you are done, try opening a web page on the client to verify whether you have Internet access.

5 Frequently asked questions


What can I do if I cannot log in to the web management page?

1. Check whether the B315's power indicator is steady on. If not, power on the B315.
2. Check whether the connection between the client and B315 is working properly.
 - If the client is connected to the B315 using a network cable, check whether the LAN/WAN indicator is steady on or blinking.
 - If the client is connected to the B315 through Wi-Fi, go to the Wi-Fi connection page to check the connection status.
3. Check that the client is set to automatically obtain an IP address and DNS server address.

What can I do if the B315 cannot access the Internet?

1. Check whether the B315's power indicator is steady on. If not, power on the B315.
2. Go to the B315's web management page to check the network status.
 - If no SIM card is detected, power off the B315 and disconnect the power adapter, reinstall the SIM card and try again.
 - If PIN code is not verified, enter the PIN code as required, and try again.
 - If no network is available, move the B315 to an appropriate place, such as beside the window, to get better signal, and try again.
 - If the dial-up connection failed, make sure the APN and account information are correctly set, and try again.
3. If the problem persists, contact your local Internet Service Provider (ISP).

Why am I unable to access Wi-Fi on a client?

1. Check whether the B315's  indicator is steady on. If not, go to the B315's web management page to enable the Wi-Fi function.
2. Check whether the client is within the range of the B315. If not, adjust the placement of the B315.
3. Check whether the Wi-Fi password is correct. Note that the Wi-Fi password is case-sensitive. The default password is printed on the label at the bottom of the B315. To change the password, go to the web management page.
4. Check whether your client's network adapter supports 802.11b/g/n. If not, the client cannot connect to the B315.
5. If the problem persists, restart your B315 or restore it to its factory settings. Note that restoring your B315 will erase all your customized settings.

6 For more help

If you are experiencing any issues with the B315:

- Restart the B315.
- See the help information on the web management page.
- Restore the B315 to its factory settings.
- Contact your service provider.

Please visit <http://consumer.huawei.com/en/support/hotline> for recently updated hotline and email address in your country or region.



Figures in this guide are for your reference only. Specific models may vary slightly, contact your service provider for more detailed information.

7 Safety information

This section contains important information about the operation of your device. It also contains information about how to use the device safely. Read this information carefully before using your device.

Electronic device

Do not use your device if using the device is prohibited. Do not use the device if doing so causes danger or interference with other electronic devices.

Interference with medical equipment

- Follow rules and regulations set forth by hospitals and health care facilities. Do not use your device where prohibited.
- Some wireless devices may affect the performance of hearing aids or pacemakers. Consult your service provider for more information.
- Pacemaker manufacturers recommend that a minimum distance of 15 cm be maintained between a device and a pacemaker to prevent potential interference with the pacemaker. If using a pacemaker, hold the device on the side opposite the pacemaker and do not carry the device in your front pocket.

Areas with flammables and explosives

- Do not use the device where flammables or explosives are stored (in a gas station, oil depot, or chemical plant, for example). Using your device in these environments increases the risk of explosion or fire. In addition, follow the instructions indicated in text or symbols.
- Do not store or transport the device in containers with flammable liquids, gases, or explosives.

Operating environment

- Avoid dusty, damp, or dirty environments. Avoid magnetic fields. Using the device in these environments may result in circuit malfunctions.
- Before connecting and disconnecting cables, stop using the device and disconnect it from the power supply. Ensure that your hands are dry during operation.
- Place the device on a stable surface.
- Keep the device away from electronic appliances that generate strong magnetic or electric fields, such as a microwave oven or refrigerator.
- During thunderstorms, power off your device and remove all cables connected to it to protect against lightning strikes.
- Do not use your device during thunderstorms to protect your device against any danger caused by lightning.

- Ideal operating temperatures are 0°C to 40°C. Ideal storage temperatures are -20°C to +70°C. Extreme heat or cold may damage your device or accessories.
- Keep the device and accessories in a well-ventilated and cool area away from direct sunlight. Do not enclose or cover your device with towels or other objects. Do not place the device in a container with poor heat dissipation, such as a box or bag.
- To protect your device or accessories from fire or electrical shock hazards, avoid rain and moisture.
- Keep the device away from sources of heat and fire, such as a heater, microwave oven, stove, water heater, radiator, or candle.
- Do not place any object, such as a candle or a water container, on the device. If any foreign object or liquid enters the device, immediately stop using it, power it off, and remove all cables connected to it. Then, contact an authorized service center.
- Do not block device openings. Reserve a minimum of 10 cm around the device to dissipate heat.
- Stop using your device or applications for a while if the device is overheated. If skin is exposed to an overheated device for an extended period, low temperature burn symptoms, such as red spots and darker pigmentation, may occur.
- Do not touch the device's antenna. Otherwise, communication quality may be reduced.
- Do not allow children or pets to bite or suck the device or accessories. Doing so may result in damage or explosion.
- Observe local laws and regulations, and respect the privacy and legal rights of others.
- The device should be installed and operated with a minimum distance of 20 cm between the device and your body.
- Keep the device in a place with good reception. The distance between the device and other metal materials (such as metal brackets or metal doors and windows) should be greater than 25 cm and the distance between the devices should be greater than 30 cm.

Child's safety

- Comply with all precautions with regard to child's safety. Letting children play with the device or its accessories may be dangerous. The device includes detachable parts that may present a choking hazard. Keep away from children.
- The device and its accessories are not intended for use by children. Children should only use the device with adult supervision.

Accessories

- Using an unapproved or incompatible power adapter, charger or battery may cause fire, explosion or other hazards.

- Choose only accessories approved for use with this model by the device manufacturer. The use of any other types of accessories may void the warranty, may violate local regulations and laws, and may be dangerous. Please contact your retailer for information about the availability of approved accessories in your area.

Power adapter safety

- The power supply is removable.
- For pluggable devices, the socket-outlet shall be installed near the devices and shall be easily accessible.
- Unplug the power adapter from electrical outlets and the device when not in use.
- Do not drop or cause an impact to the power adapter. If it is damaged, take it to an authorized service center for inspection.
- If the power cable is damaged (for example, the cord is exposed or broken), or the plug loosens, stop using it at once. Continued use may lead to electric shocks, short circuits, or fire.
- Do not touch the power cord with wet hands or pull the power cord to disconnect the power adapter.
- Do not touch the device or the power adapter with wet hands. Doing so may lead to short circuits, malfunctions, or electric shocks.
- If your power adapter has been exposed to water, other liquids, or excessive moisture, take it to an authorized service center for inspection.
- Ensure that the power adapter meets the requirements of Clause 2.5 in IEC60950-1/EN60950-1/UL60950-1 and has been tested and approved according to national or local standards.


Cleaning and maintenance

- During storage, transportation, and operation of the device, keep it dry and protect it from collision.
- Keep the device and accessories dry. Do not attempt to dry it with an external heat source, such as a microwave oven or hair dryer.
- Do not expose your device or accessories to extreme heat or cold. These environments may interfere with proper function and may lead to fire or explosion.
- Avoid collision, which may lead to device malfunctions, overheating, fire, or explosion.
- If the device is not going to be used for an extended period of time, power it off, and remove all cables connected to it.
- If anything unusual occurs (for example, if the device emits smoke or any unusual sound or smell), immediately stop using it, power it off, remove all cables connected to it, and contact an authorized service center.
- Do not trample, pull, or excessively bend any cable. Doing so may damage the cable, causing the device to malfunction.

- Before you clean or maintain the device, stop using it, stop all applications, and disconnect all cables connected to it.
- Do not use any chemical detergent, powder, or other chemical agents (such as alcohol and benzene) to clean the device or accessories. These substances may cause damage to parts or present a fire hazard. Use a clean, soft, and dry cloth to clean the device and accessories.
- Do not place magnetic stripe cards, such as credit cards and phone cards, near the device for extended periods of time. Otherwise the magnetic stripe cards may be damaged.
- Do not dismantle or remanufacture the device and its accessories. This voids the warranty and releases the manufacturer from liability for damage. In case of damage, contact an authorized service center for assistance or repair.

Disposal and recycling information



 This symbol (with or without a solid bar) on the device, batteries (if included), and/or the packaging, indicates that the device and its electrical accessories (for example, a headset, adapter, or cable) and batteries should not be disposed of as household garbage. These items should not be disposed of as unsorted municipal waste and should be taken to a certified collection point for recycling or proper disposal.

For more detailed information about device or battery recycling, contact your local city office, household waste disposal service, or retail store.

Disposal of the device and batteries (if included) is subject to WEEE Directive Recast (Directive 2012/19/EU) and Battery Directive (Directive 2006/66/EC). The purpose of separating WEEE and batteries from other waste is to minimize the potential environmental impacts and human health risk of any hazardous substances that may be present.

Reduction of hazardous substances

This device is compliant with the REACH Regulation [Regulation (EC) No 1907/2006] and RoHS Directive Recast (Directive 2011/65/EU). Batteries (if included) are compliant with the Battery Directive (Directive 2006/66/EC). For up-to-date information about REACH and RoHS compliance, please visit the web site <http://consumer.huawei.com/certification>.

EU regulatory conformance

Statement

Hereby, Huawei Technologies Co., Ltd. declares that this device is in compliance with the essential requirements and other relevant provisions of Directive 1999/5/EC.

For the declaration of conformity, visit the web site
<http://consumer.huawei.com/certification>.

The following marking is included in the product:

CE 0682

This device may be operated in all member states of the EU.

Observe national and local regulations where the device is used.

This device may be restricted for use, depending on the local network.

Restrictions in the 2.4 GHz band:

Norway: This subsection does not apply for the geographical area within a radius of 20 km from the centre of Ny-Ålesund.

8 Legal Notice

Copyright © Huawei Technologies Co., Ltd. 2015. All rights reserved.

No part of this manual may be reproduced or transmitted in any form or by any means without prior written consent of Huawei Technologies Co., Ltd. and its affiliates ("Huawei").

The product described in this manual may include copyrighted software of Huawei and possible licensors. Customers shall not in any manner reproduce, distribute, modify, decompile, disassemble, decrypt, extract, reverse engineer, lease, assign, or sublicense the said software, unless such restrictions are prohibited by applicable laws or such actions are approved by respective copyright holders.

Trademarks and Permissions



HUAWEI, **HUAWEI**, and



are trademarks or registered trademarks of Huawei Technologies Co., Ltd.

LTE is a trade mark of ETSI.

Other trademarks, product, service and company names mentioned may be the property of their respective owners.

Notice

Some features of the product and its accessories described herein rely on the software installed, capacities and settings of local network, and therefore may not be activated or may be limited by local network operators or network service providers.

Thus, the descriptions herein may not exactly match the product or its accessories which you purchase.

Huawei reserves the right to change or modify any information or specifications contained in this manual without prior notice and without any liability.

DISCLAIMER

ALL CONTENTS OF THIS MANUAL ARE PROVIDED "AS IS". EXCEPT AS REQUIRED BY APPLICABLE LAWS, NO WARRANTIES OF ANY KIND, EITHER EXPRESS OR IMPLIED, INCLUDING BUT NOT LIMITED TO, THE IMPLIED WARRANTIES OF MERCHANTABILITY AND FITNESS FOR A PARTICULAR PURPOSE, ARE MADE IN RELATION TO THE ACCURACY, RELIABILITY OR CONTENTS OF THIS MANUAL.

TO THE MAXIMUM EXTENT PERMITTED BY APPLICABLE LAW, IN NO EVENT SHALL HUAWEI BE LIABLE FOR ANY SPECIAL, INCIDENTAL, INDIRECT, OR CONSEQUENTIAL DAMAGES, OR LOSS OF PROFITS, BUSINESS, REVENUE, DATA, GOODWILL SAVINGS

OR ANTICIPATED SAVINGS REGARDLESS OF WHETHER SUCH LOSSES ARE FORSEEABLE OR NOT.

THE MAXIMUM LIABILITY (THIS LIMITATION SHALL NOT APPLY TO LIABILITY FOR PERSONAL INJURY TO THE EXTENT APPLICABLE LAW PROHIBITS SUCH A LIMITATION) OF HUAWEI ARISING FROM THE USE OF THE PRODUCT DESCRIBED IN THIS MANUAL SHALL BE LIMITED TO THE AMOUNT PAID BY CUSTOMERS FOR THE PURCHASE OF THIS PRODUCT.

Import and Export Regulations

Customers shall comply with all applicable export or import laws and regulations and be responsible to obtain all necessary governmental permits and licenses in order to export, re-export or import the product mentioned in this manual including the software and technical data therein.

Privacy Policy

To better understand how we protect your personal information, please see the privacy policy at <http://consumer.huawei.com/privacy-policy>.