

# **User Manual**

WL556E

Portable Wireless-N Repeater

# Table of Contents

<b>About the Device .....</b>	<b>3</b>
<b>Minimum System Requirements.....</b>	<b>4</b>
<b>Package Contents .....</b>	<b>4</b>
<b>Device Overview .....</b>	<b>5</b>
Front Panel .....	5
Bottom Panel .....	6
<b>Configuring the Device .....</b>	<b>7</b>
<b>Setup Your Device .....</b>	<b>8</b>
<b>Use the Device as a Wireless Repeater .....</b>	<b>12</b>
<b>Use the Device as a Wireless Bridge .....</b>	<b>12</b>
<b>Setup Your Device as a Wireless AP .....</b>	<b>13</b>
<b>Changing the Wireless Settings .....</b>	<b>15</b>
<b>Changing the Wireless Security Settings .....</b>	<b>16</b>
<b>WPS.....</b>	<b>17</b>
<b>Configuring Wireless MAC Filtering.....</b>	<b>18</b>
<b>Viewing the Home Page .....</b>	<b>19</b>
<b>System Management .....</b>	<b>20</b>
<b>Accessing System Management.....</b>	<b>20</b>
<b>What's on System Management .....</b>	<b>20</b>
Information.....	21
Firmware.....	22
Reboot .....	23
Password .....	24
<b>Setting a Static IP on your PC .....</b>	<b>25</b>

# About the Device

Aztech WL556E Portable Wireless-N Repeater supports wireless 802.11b/g/n standards with one 10/100Base-T Ethernet port.

WL556E is designed with MIMO technology to extend the reach of any existing wireless router/AP to maximize the coverage in your home or office. It basically receives the signal from your wireless router/AP and repeats it to extend the range to farther locations that are previously unreachable.

Equipped with 64/128-bit WEP, WIFI Protected Access (WPA), and the latest WPA2 encryption with TKIP and AES algorithm to protect your wireless network from unauthorized access. MAC Address Filtering for wireless links provides an additional layer of security for your wireless network.

The device comes with 1 x 10/100M Auto MDI/MDIX Ethernet port that can be used to connect to an existing wired network to serve as a wireless AP or wireless bridge. It can also be used to configure the device via its web-based GUI, or upgrade the firmware when connected to the Network Interface Card of your PC.

## **Minimum System Requirements**

Your computer must meet the following minimum requirements.

- Any operating system can be used
- Web Browser
- 233MHz processor
- Ethernet network adapter
- Or Wireless network adapter

## **Package Contents**

Package contents are listed below. For any missing items, please contact your dealer immediately. Product contents may vary for different models.

- WL556E
- Ethernet cable
- Easy Start Guide
- Resource CD

# Device Overview

## Front Panel



LABEL	STATE	DESCRIPTION
POWER LED	On – Solid Green Off	Device is powered ON Device is powered OFF
ETHERNET LED	On – Solid Green On – Blinking Green Off	Ethernet device is connected Indicates LAN activity No Ethernet device connected
WIRELESS LED	On – Solid Green On – Blinking Green Off	Wireless interface is UP Indicates wireless activity Wireless interface is DOWN
WPS LED and BUTTON	On – Solid Green On – Blinking Green Off	WPS association is successful WPS authentication on going WPS disabled

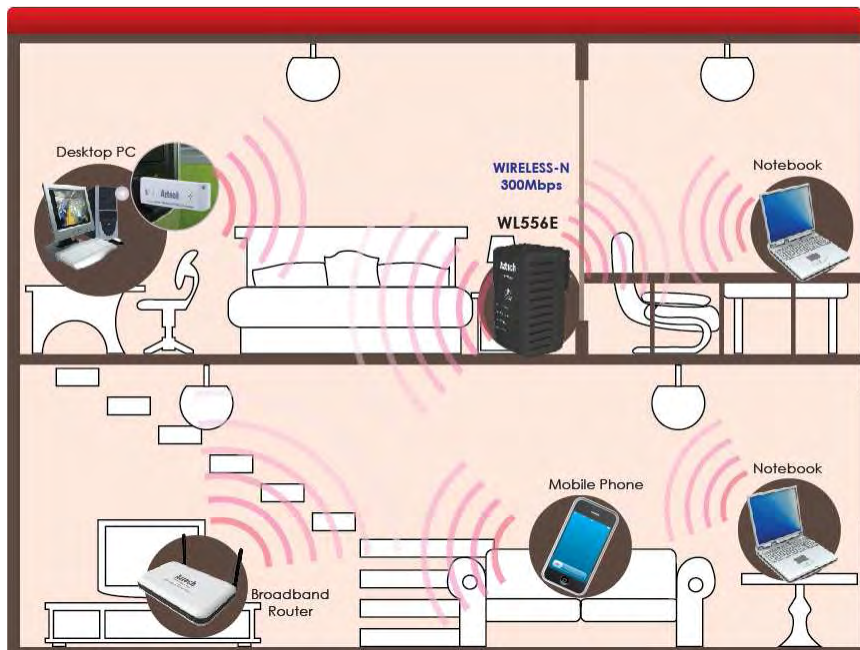
## Bottom Panel



LABEL	DESCRIPTION
RESET	Press the Reset button for 5 seconds to restore the device to default factory settings
ETHERNET PORT	Connect to computers/Ethernet devices

# Configuring the Device

Before moving ahead to setup your wireless repeater, it is often a good idea to identify the areas where you have good wireless reception and weak or no wireless signal at all. Based from this assessment you may place the wireless repeater in between a location where you have good wireless reception and where you have poor wireless coverage. The illustration below is an example of a network diagram.



**NOTE:** Placement of the Wireless Repeater is crucial to get the best possible results for extending your existing wireless signal. It is ideal for the wireless repeater to be placed in a location where it can receive good wireless signal from the wireless router/AP so as to avoid disconnection and packet loss.

# Setup Your Device

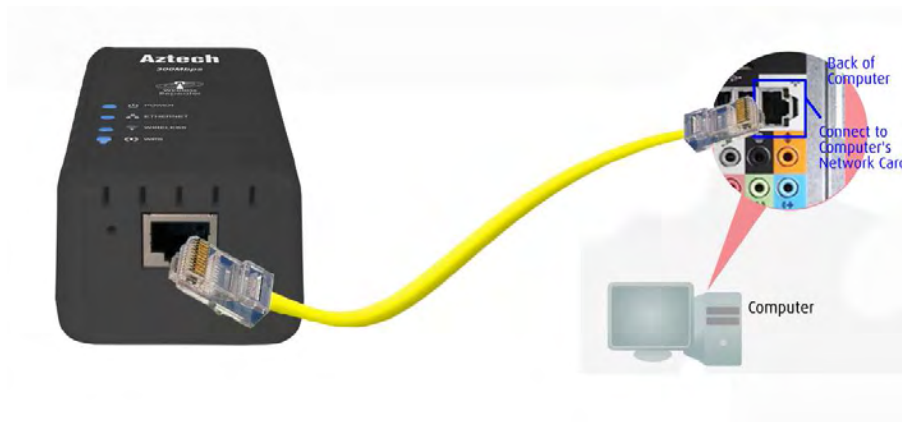
Setting up the device is easy. Simply follow the steps below to connect the device to your existing wireless router/AP. Please note that the main router/AP and Wireless Repeater must be on the same wireless channel.

## To Setup your device via the Web GUI:

1. Connect the WL556E to a power outlet.

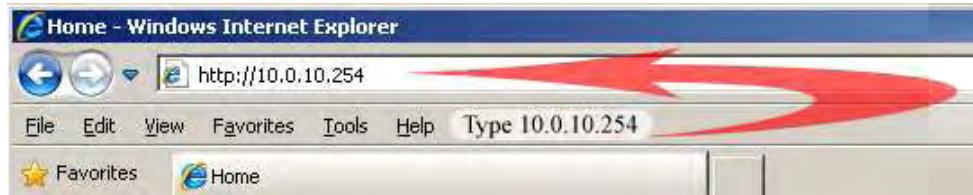


2. Connect a PC/laptop to the Wireless Repeater. Plug an Ethernet cable to the Ethernet port at the base portion of the device.





3. Once a connection to the device is established, your PC/laptop will receive an IP address and you can start the configuration using the web graphical user interface.
4. To access the web GUI, Open your web browser and type 10.0.10.254 on the address bar



5. Input username as admin and password as admin, click the OK button



6. Click on the Auto Setup button. This will show the available wireless networks that are in range of the WL556E



NOTE: If you are connecting to a hidden wireless network, you need to go through the Manual Setup and key-in the information from your existing wireless router/AP manually. Also un-tick the Broadcast SSID option so your wireless network can remain hidden.

7. Click the **Connect** button located on the right side of the wireless network you want to connect to. Click Refresh if you don't see your wireless SSID on the list

Channel	SSID	BSSID	Security	Signal	W-Mode	Network Type	Connect
1	Aztech_mainAP	90:e6:ba:31:42:a5	WPA2PSK/AES	50	11b/g/n	Infrastructure	Connect
2	IPDSLAM1	00:c4:32:11:22:37	WPAPSK/TKIP	70	11b/g/n	Infrastructure	Connect
4	Palette-WLAN	00:0e:8e:7d:0b:72	WEP	50	11b/g	Infrastructure	Connect
6	Aztech550_E37D	00:26:75:16:e3:7d	WPAPSK/TKIP	91	11b/g/n	Infrastructure	Connect
6	Hotzone	00:1a:70:95:4d:b0	WEP	24	11b/g	Infrastructure	Connect
6	pacificnetwork_128520	00:26:75:12:85:20	NONE	10	11b/g/n	Infrastructure	Connect
6	SINGTEL-B5BD	00:30:0a:e7:b5:be	WEP	39	11b/g	Infrastructure	Connect
6	2wire-jrtest	34:ef:44:52:93:51	WEP	65	11b/g	Infrastructure	Connect
6	Aztech7000_2001	00:26:75:00:20:01	WPA1PSKWPA2PSK/TKIPAES	0	11b/g/n	Infrastructure	Connect
11	PLDTMyDSLbiz11	00:30:0a:e7:b2:e7	WEP	86	11b/g	Infrastructure	Connect
11	Aztech_HQ	00:26:75:2e:15:b8	WEP	100	11b/g/n	Infrastructure	Connect
11	stoor	00:15:70:c1:4d:10	WEP	0	11b/g	Infrastructure	Connect
11	Aztech_Wifi	00:12:0e:3c:22:bb	NONE	29	11b/g	Infrastructure	Connect
13	guest	00:22:2d:2a:a5:b9	WPAPSK/TKIP	65	11b/g	Infrastructure	Connect
13	asterix	00:22:2d:2a:a5:b8	WEP	65	11b/g	Infrastructure	Connect

Refresh

8. Key-in the wireless network key/passphrase and Click the Apply button to commit the changes

9. Close the web browser and reboot the device

10. After the device has restarted, you may now connect your wireless devices such as laptops, smartphones, etc.

## Use the Device as a Wireless Repeater

Once the wireless connection from the WL556E to the main AP/router is established you can connect your wireless devices like laptops and smartphones through the wireless repeater. These devices will obtain an IP address from the main AP/router and should be able to access the Internet from farther locations previously unreachable by your wireless signal.

Setup Diagram



## Use the Device as a Wireless Bridge

Connect wired devices to your wireless network by connecting an Ethernet cable from a wired device, such as a Desktop PC, Game Console or Internet-ready LCD TV, to the Ethernet port of the WL556E.

Setup Diagram



## Setup Your Device as a Wireless AP

Use the WL556E as a Wireless Access Point to turn a regular modem-router into a wireless capable networking device to connect wireless-enabled devices such as laptops and smartphones.

### To setup the device as a wireless AP:

1. Connect a PC/laptop to the Wireless Repeater. Plug an Ethernet cable to the Ethernet port at the base portion of the device.
2. Once a connection to the device is established, your PC/laptop will receive an IP address and you can start the configuration using the web graphical user interface.
3. To access the web GUI, Open your web browser and type 10.0.10.254 on the address bar
4. Input username as admin and password as admin, click the OK button
5. Click on the Manual Setup button and Enter the SSID, security type, encryption type and WEP/passphrase for your Wireless Access Point, then click the Apply button
6. After the settings are applied, unplug the Ethernet cable from your PC and connect it to an available Ethernet port in your modem-router to match the hardware setup illustrated below



Setup Diagram



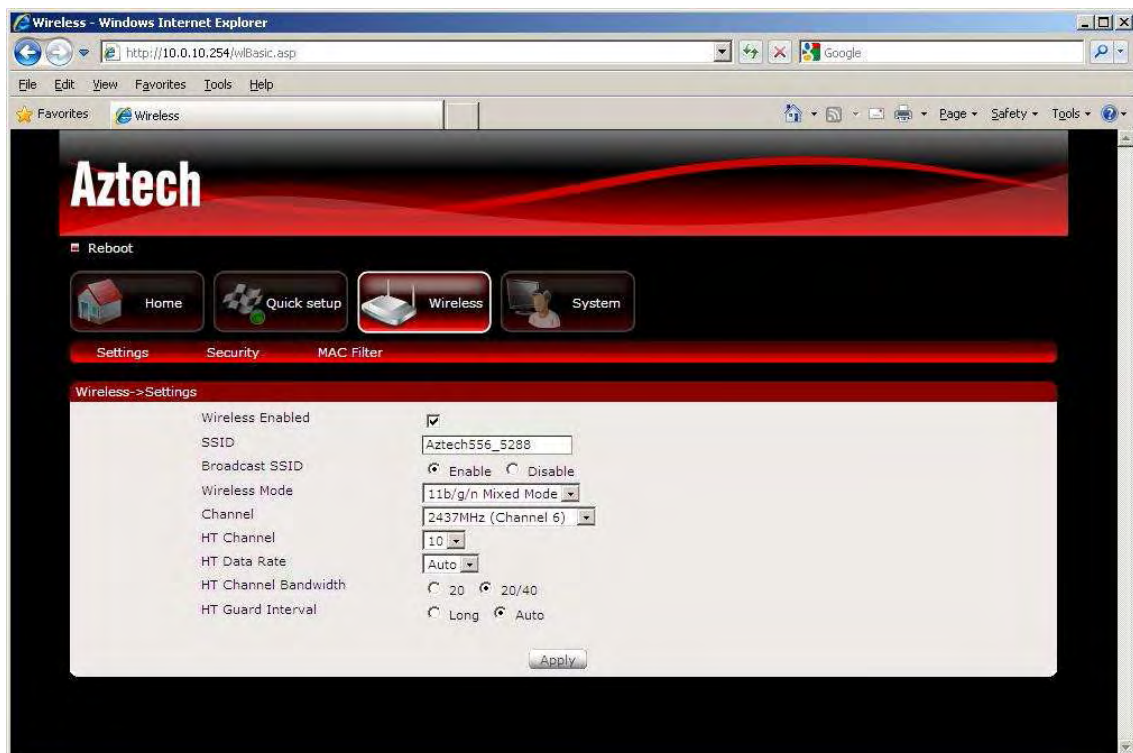
NOTE: To change any wireless settings on the WL556E, you would need to set a static IP address on your wireless network card to be able to access the web GUI before you can configure the settings. Please refer to the steps on how to set a static IP on your PC also included in this manual.

# Changing the Wireless Settings

Modify the default Wireless Settings to suit your own preference.

## To change the Wireless settings via the Web GUI:

1. Open your browser
2. Type 10.0.10.254 on the address bar
3. Input admin for both username and password fields and click on OK
4. On the top pane, click the Wireless button to show the menu
5. You can change the advanced wireless settings as preferred from this page



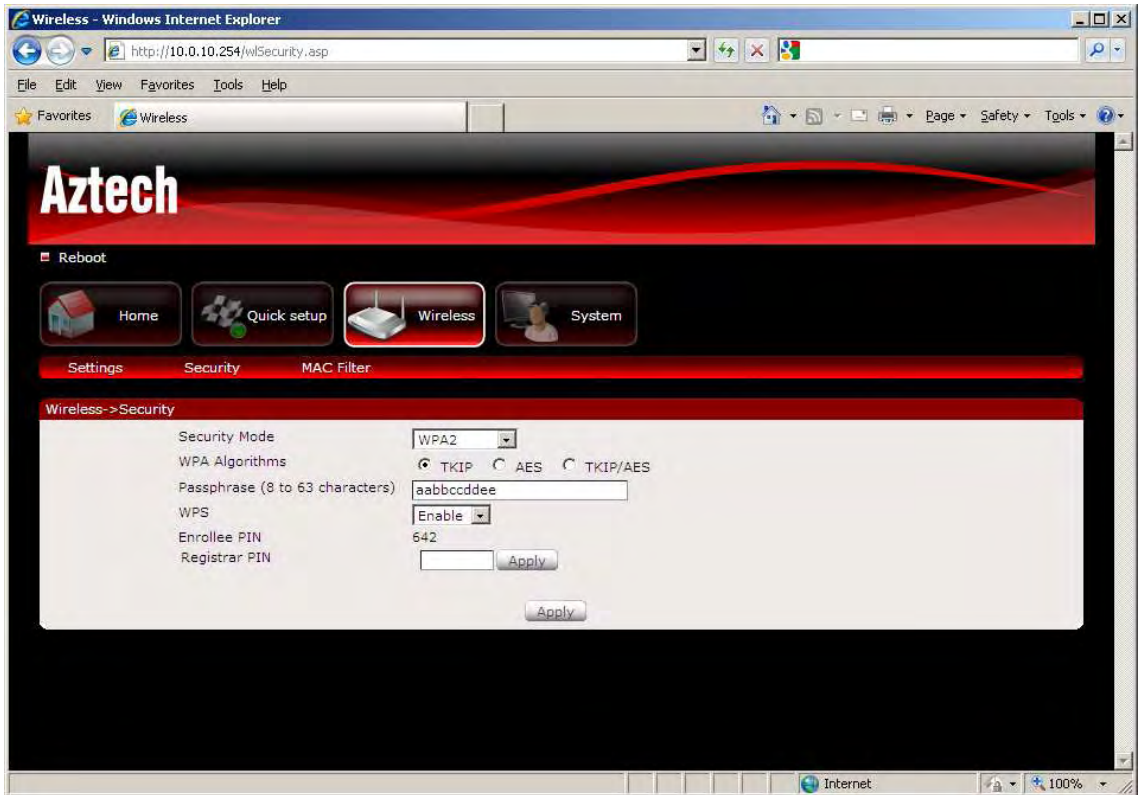
6. Click Apply to commit the changes
7. Ensure to recreate the wireless profile on your computer to match the new settings

# Changing the Wireless Security Settings

Modify the default Wireless Security Settings to suit your own preference.

## To change the Wireless security settings via the Web GUI:

1. Open your browser
2. Type 10.0.10.254 on the address bar
3. Input admin for both username and password fields and click on OK
4. Click the Wireless button, and click the Security menu. You can change the wireless security settings as preferred from this page



5. Click Apply to commit the changes
6. Ensure to recreate the wireless profile on your computer to match the new settings



## WPS

WPS or Wifi Protected Setup makes it easy for wireless clients to connect to the wireless repeater. Simply press the WPS button on the repeater and press the WPS button on the wireless client within 2 minutes, and the wireless security authentication will be done automatically.



Press the WPS button for 5 seconds



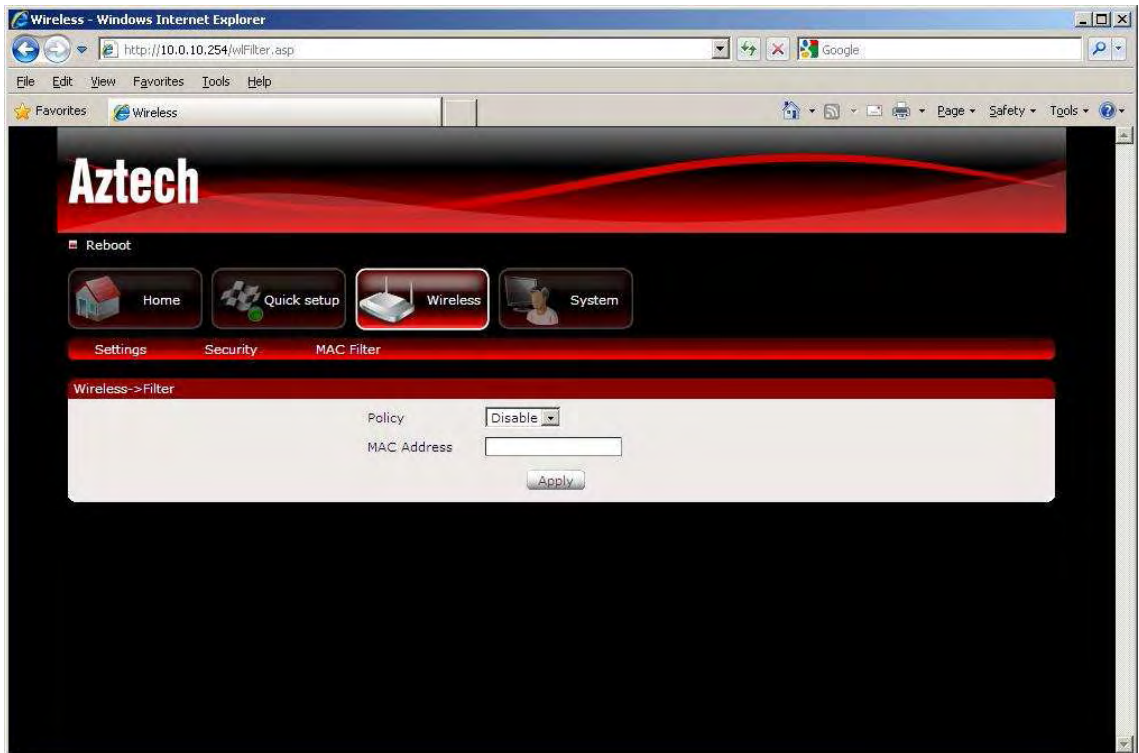
Press the WPS Button for 5 seconds

# Configuring Wireless MAC Filtering

Wireless MAC Filtering allows you to select which wireless clients to allow or deny access to the Wireless Repeater.

## To configure Wireless MAC Filtering via the Web GUI:

1. Open your browser
2. Type 10.0.10.254 on the address bar
3. Input admin for both username and password fields and click on OK
4. Click the Wireless button, and click MAC filter menu. You can select Allow or Deny from the Policy drop down box and enter the MAC address of the wireless client you wish to allow/deny access to the wireless repeater



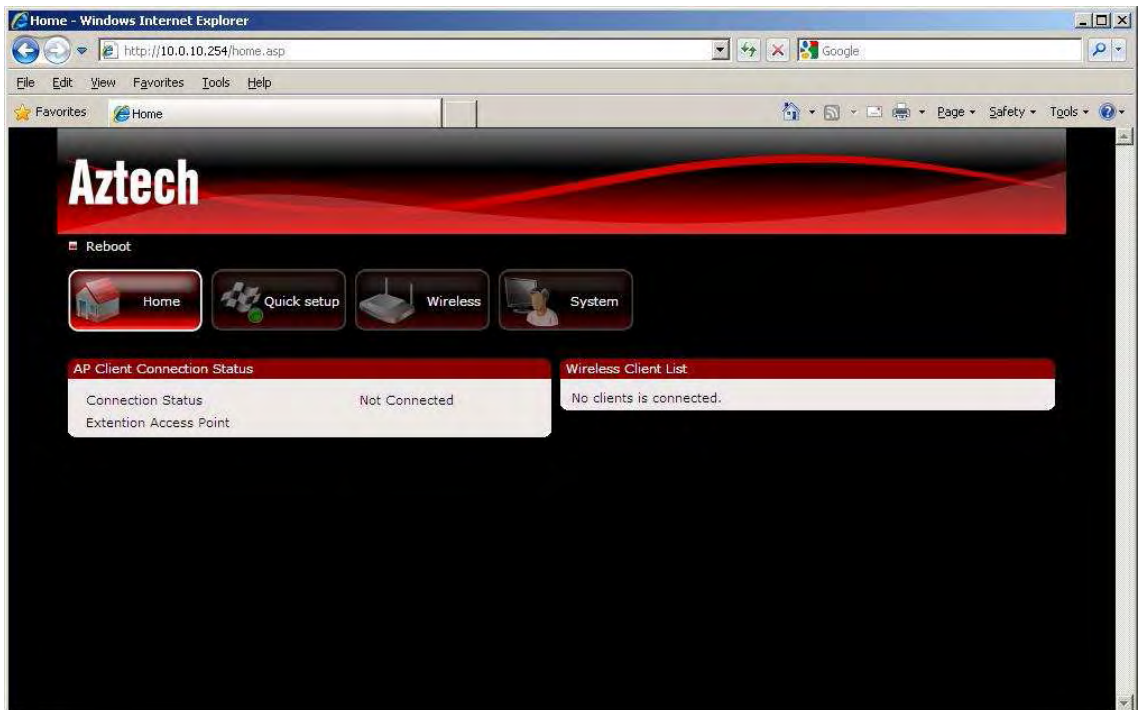
5. Click Apply to commit the settings

# Viewing the Home Page

The Home Page will tell you information about your device.

## To view the Home Page via the Web GUI:

1. Open your browser
2. Type 10.0.10.254 on the address bar
3. Input admin for both username and password fields and click on OK



4. AP Client Connection Status displays the Connection status and SSID of the Access Point being extended.
5. Wireless Client List displays the current wireless clients connected to the repeater.

# System Management

The System Management menu is used for device settings administration.

## Accessing System Management

### To access the Web User Interface:

1. Open your browser.
2. Type-in 10.0.10.254 on the address bar and then press Enter.
3. Input admin for both username and password fields and click on OK



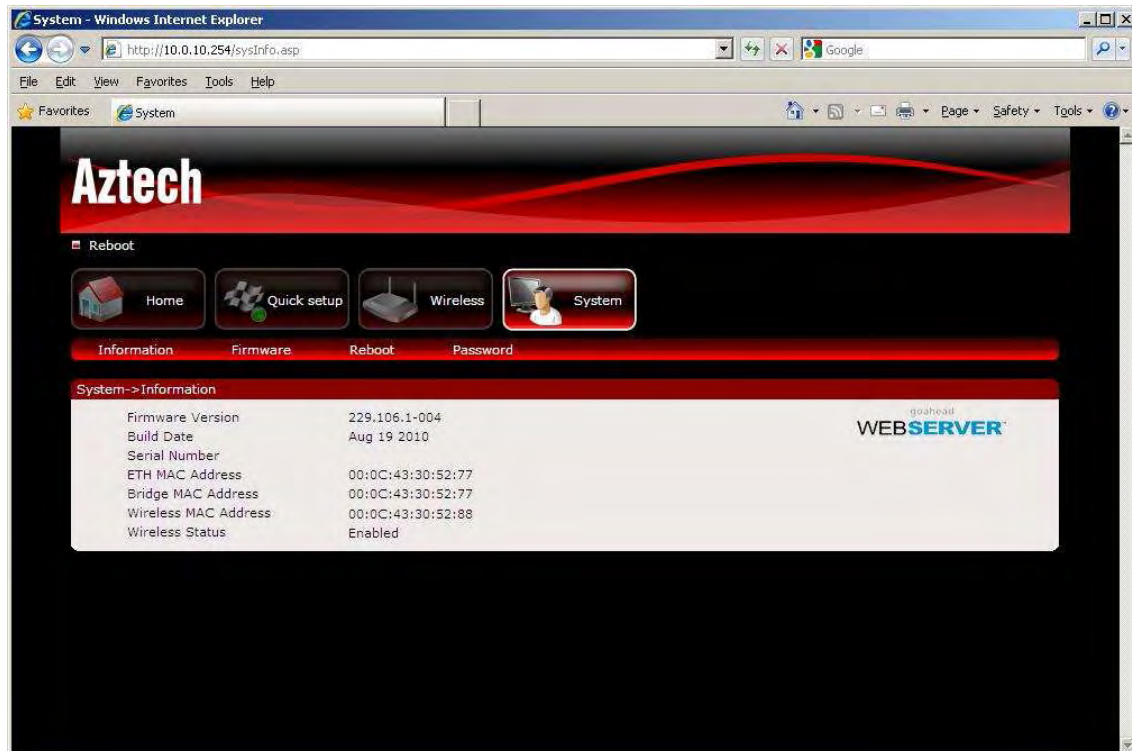
## What's on System Management

System Management includes the following options:

- Information
- Firmware
- Reboot
- Password

## Information

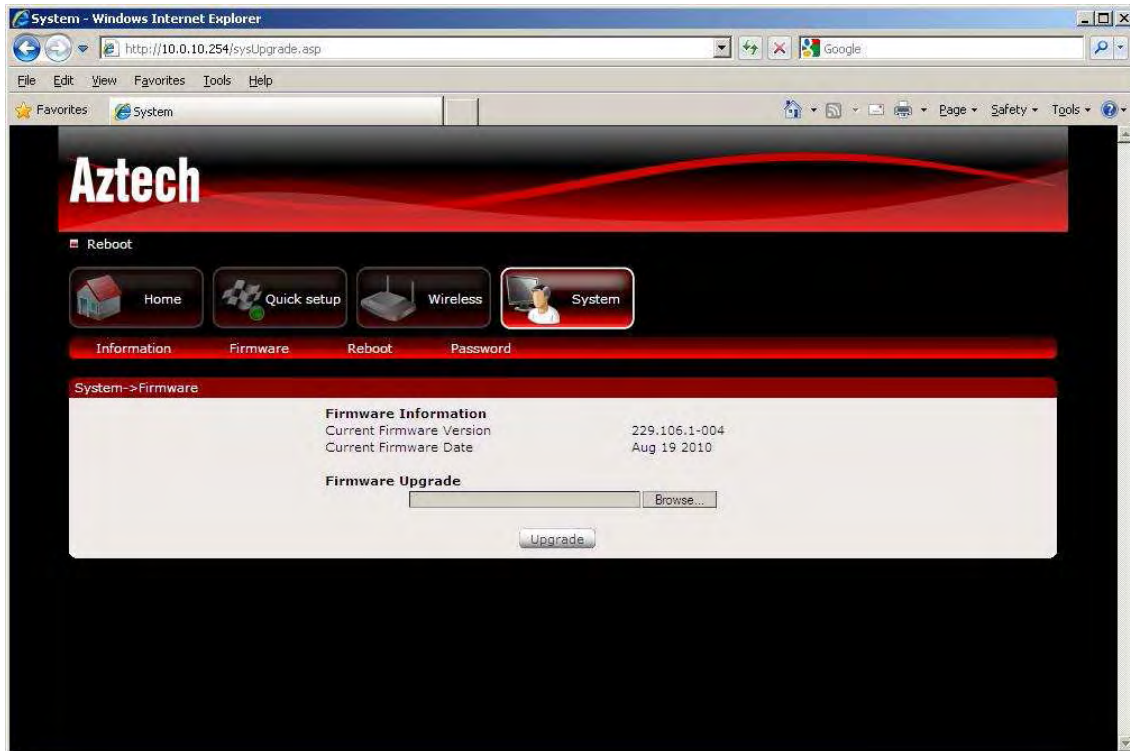
This page shows the device information. Below is the list of information shown in this menu.



- Firmware Version – Shows the current firmware version of the device
- Build Date – Shows the firmware release date
- Serial Number – Shows the serial number of the device
- ETH MAC Address – Shows device's Ethernet interface MAC address
- Wireless MAC Address – Shows device's wireless interface MAC address
- Wireless Status – Shows the status of the wireless interface.

## Firmware

Firmware menu allows you to see the current firmware version and build date as well as upgrade the firmware of the device.

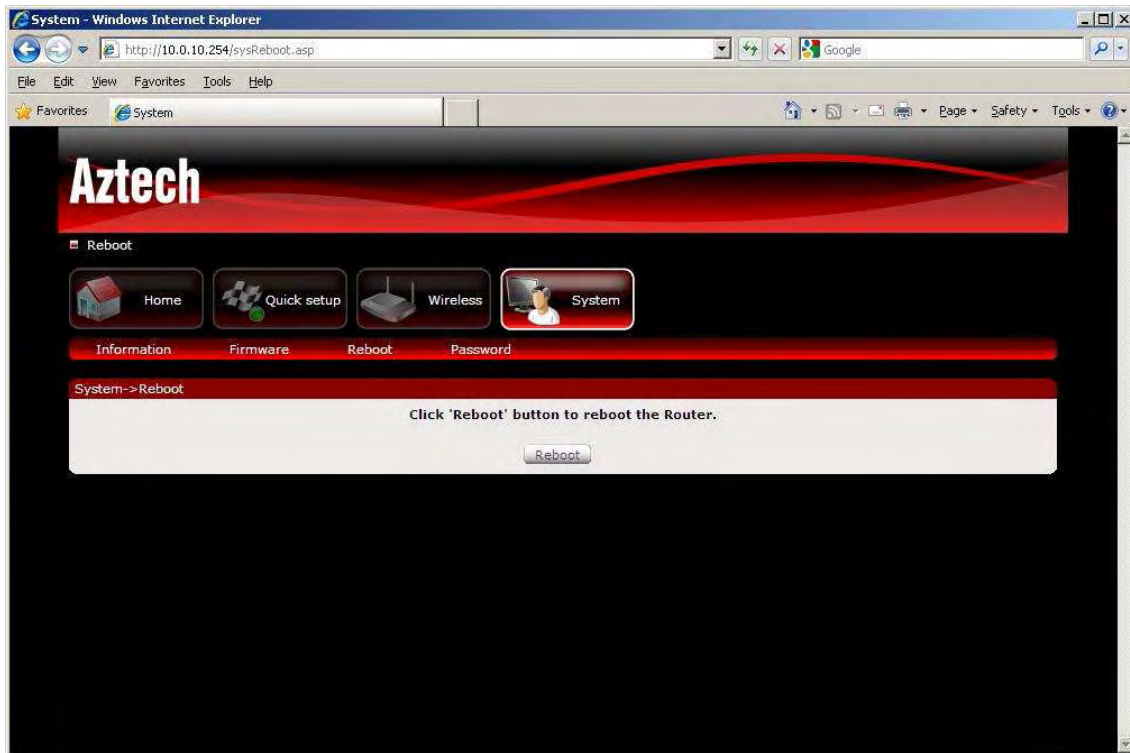


- Firmware Information – Shows the current firmware’s version and build date
- Firmware Upgrade – Load a new firmware upgrade file to the device

NOTE: Make sure you connect to the device via Ethernet cable when upgrading the firmware to avoid corruption during the firmware upgrade procedure.

## Reboot

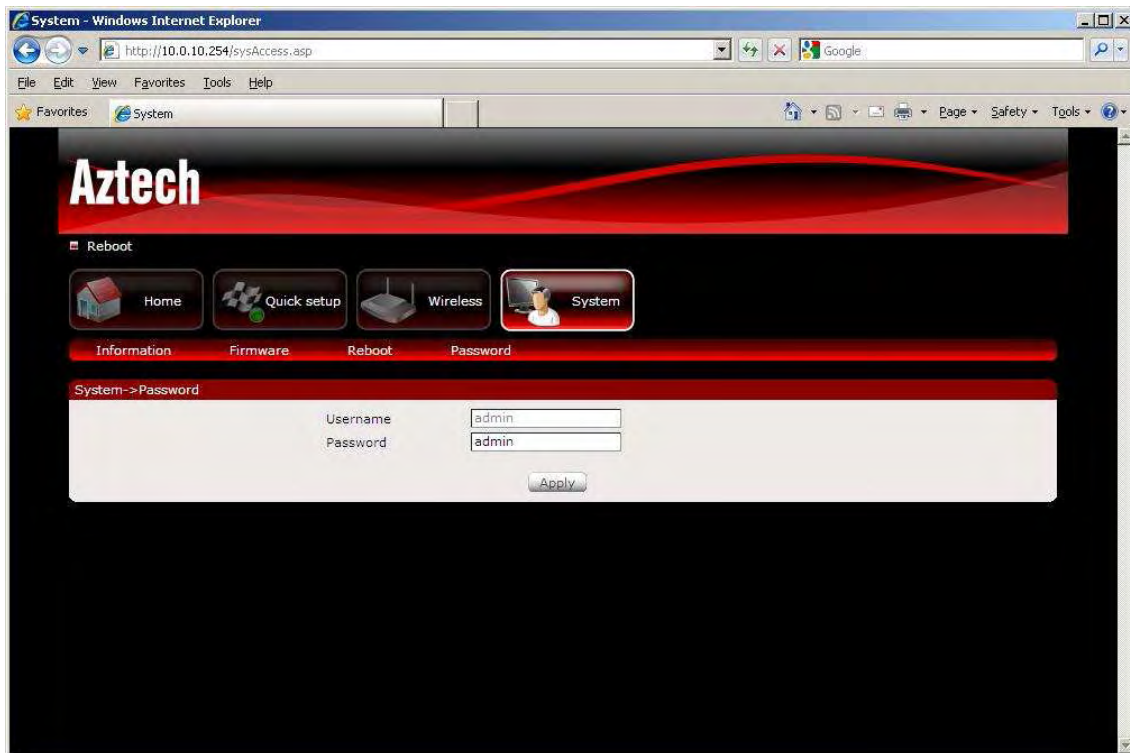
Reboot allows you to reboot the device for new settings to take effect.



- Reboot – Allows you to reboot the device

## Password

Password menu allows you to change the device's password to access the Graphical User Interface (GUI).



- Password – Allows you to change the router's password



# Setting a Static IP on your PC

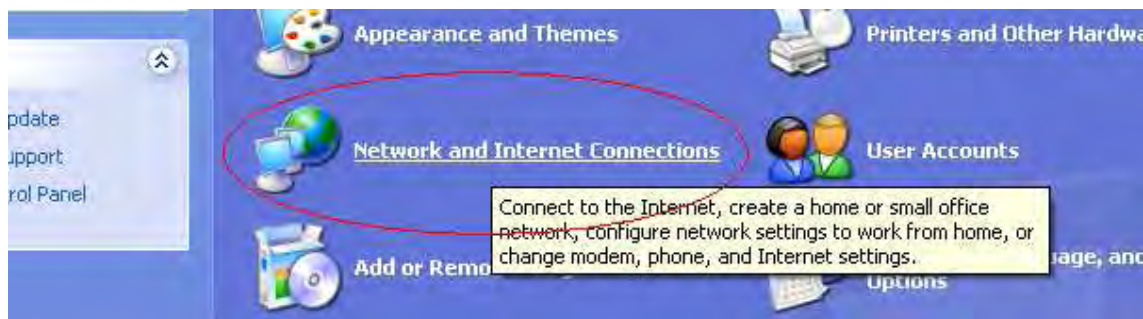
The WL556E Wireless N Repeater will only give an IP address to your PC upon initial installation. Once you have associated it with your Wireless Router/AP, you will no longer have access to the device's web GUI. If you wish to change any settings on the WL556E, you need to set a Static IP address on your PC. Just remember to set it back to "Obtain an IP address automatically" after you are done.

## To set a static IP address on your PC using Windows XP:

1. Click Start > Control Panel



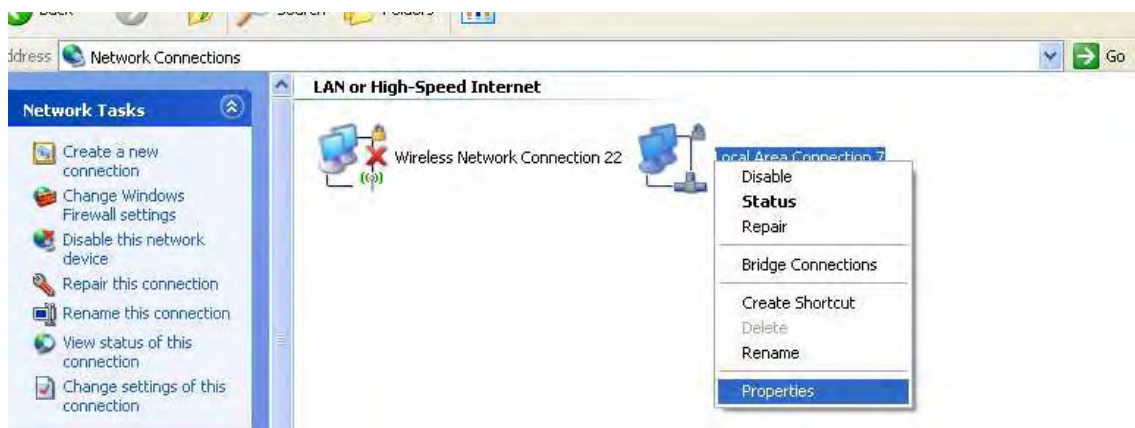
2. Click on Network and Internet Connections



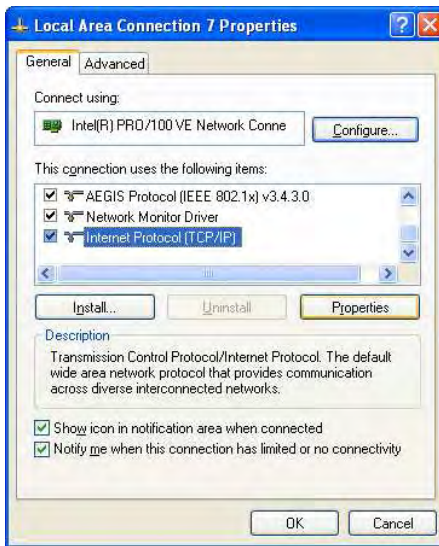
3. Click on Network Connections



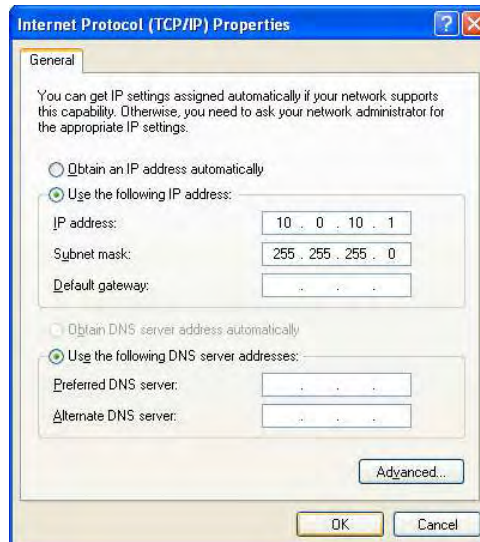
4. Right-Click on the Network Adapter you will use to configure the wireless repeater and click Properties



5. Click to select Internet Protocol (TCP/IP) and click Properties



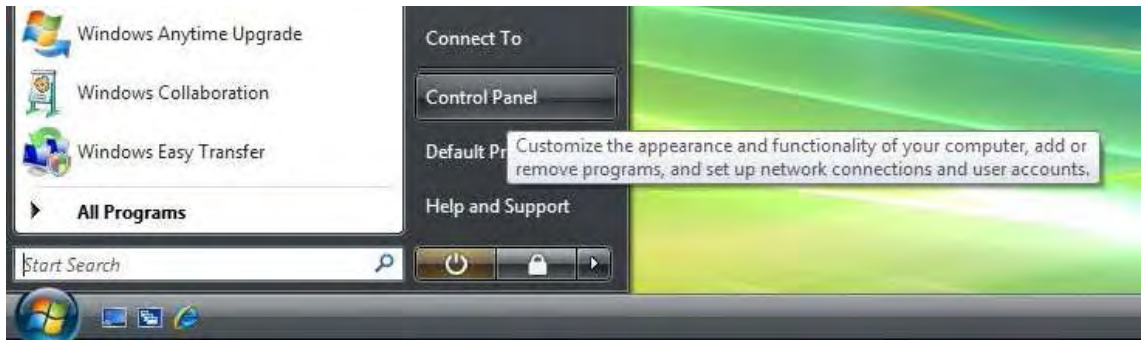
6. Select "Use the following IP address:" and key in 10.0.10.1 as the IP address and 255.255.255.0 for the Subnet mask. Leave the other fields blank.



7. Click OK to commit the settings.

### To set a static IP address on your PC using Windows Vista:

1. Click Start > Control Panel



## 2. Double-Click Network and Sharing Center



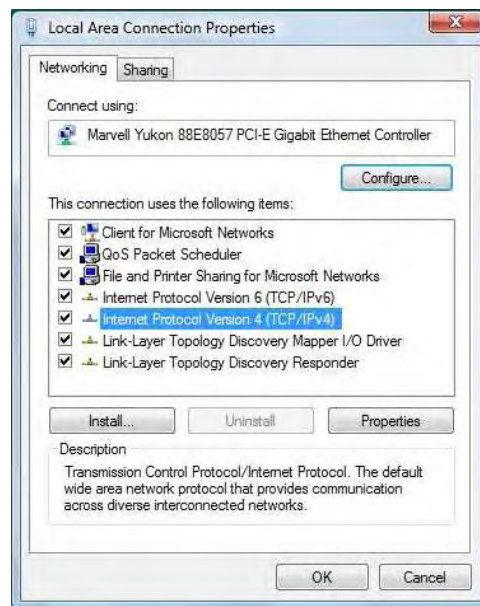
## 3. Click Manage network connections



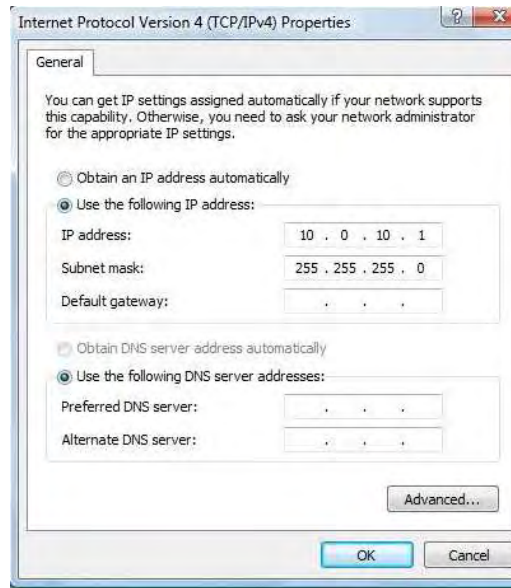
## 4. Right-Click on the Network Adapter you will use to configure the wireless repeater and click Properties



5. Click to select Internet Protocol Version 4 (TCP/IPv4) and click Properties



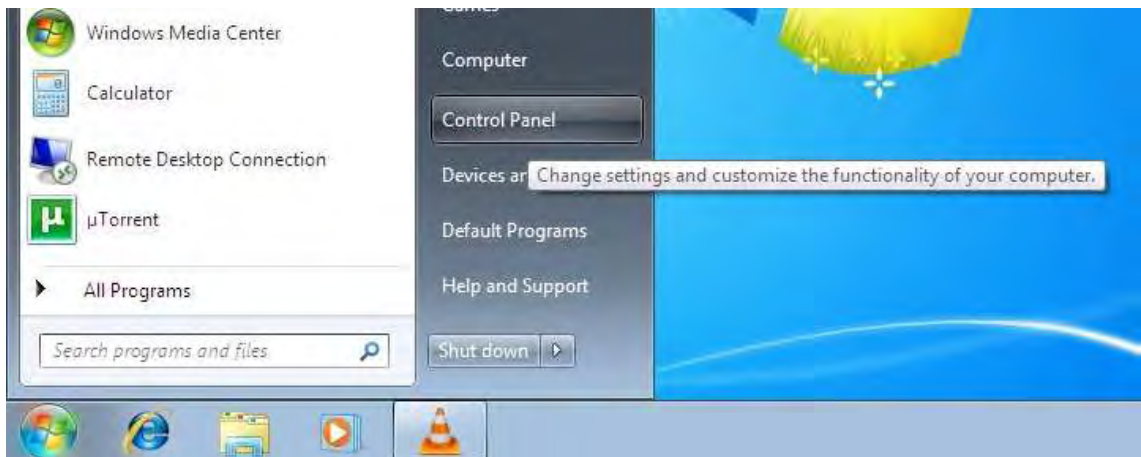
6. Select "Use the following IP address:" and key in 10.0.10.1 as the IP address and 255.255.255.0 for the Subnet mask. Leave the other fields blank.



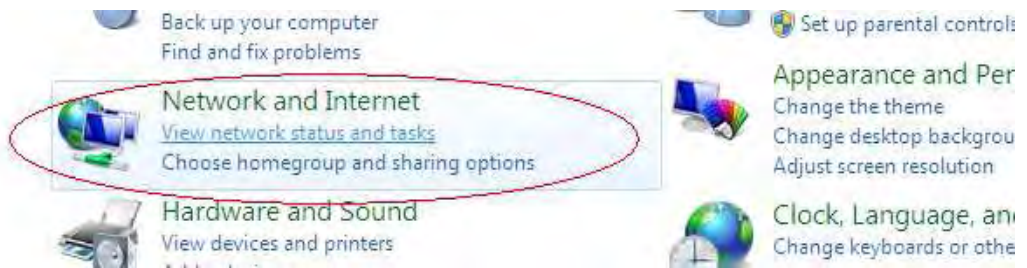
7. Click OK to commit the settings.

### To set a static IP address on your PC using Windows 7:

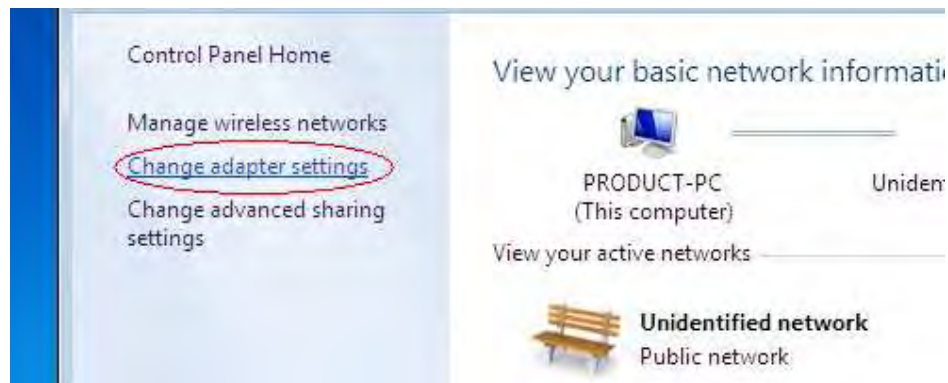
1. Click Start > Control Panel



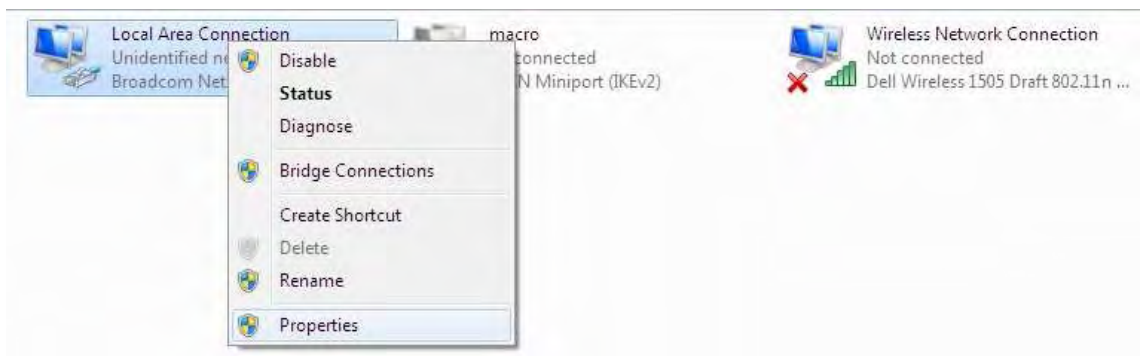
2. Click View network status and tasks



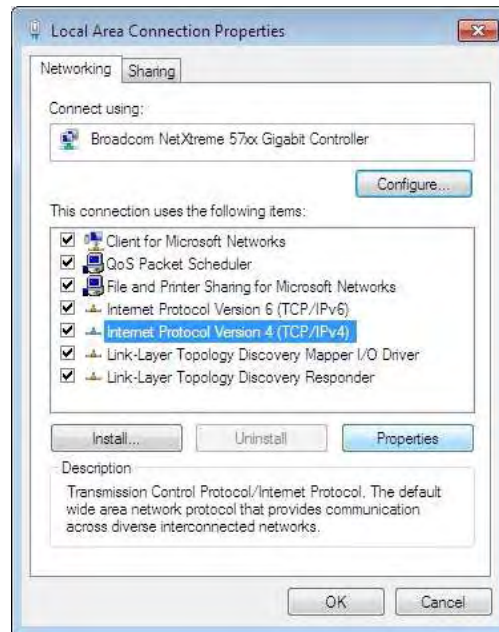
3. Click Change adapter settings



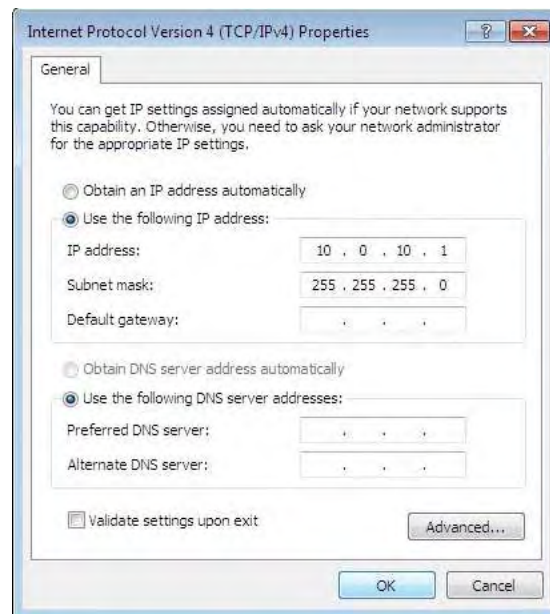
4. Right-Click on the Network Adapter you will use to configure the wireless repeater and click Properties



5. Click to select Internet Protocol Version 4 (TCP/IPv4) and click Properties



6. Select "Use the following IP address:" and key in 10.0.10.1 as the IP address and 255.255.255.0 for the Subnet mask. Leave the other fields blank.



7. Click OK to commit the settings



## Safety Precautions

- Do not open, service, or change any component.
- Only qualified technical specialists are allowed to service the equipment.
- Observe safety precautions to avoid electric shock
- Check voltage before connecting to the power supply. Connecting to the wrong voltage will damage the equipment.

# FCC Notice

This equipment has been tested and found to comply with the limits for a Class B digital device, pursuant to Part 15 of the FCC Rules. These limits are designed to provide reasonable protection against harmful interference in a residential installation. This equipment generates, uses, and can radiate radio frequency energy and, if not installed and used in accordance with the instructions, may cause harmful interference to radio communications. However, there is no guarantee that interference will not occur in a particular installation. If this equipment does cause harmful interference to radio or television reception, which can be determined by turning the equipment off and on, the user is encouraged to try to correct the interference by one or more of the following measures:

- Reorient or relocate the receiving antenna.
- Increase the separation between the equipment and receiver.
- Connect the equipment into an outlet on a circuit different from that to which the receiver is connected.
- Consult the dealer or an experienced radio or television technician for help.

## Modifications

The FCC requires the user to be notified that any changes or modifications made to this device that are not expressly approved by Aztech could void the user's authority to operate the equipment.

## **This device complies with Part 15 of the FCC rules.**

This device complies with Part 15 of the FCC rules. Operation is subject to the following two conditions:

1. This device may not cause harmful interference, and
2. This device must accept any interference received, including interference that may cause undesired operation.

## **Exposure Information to Radio Frequency Energy**

This equipment complies with FCC radiation exposure limits set forth for an uncontrolled environment. This equipment should be installed and operated with minimum distance of 20 cm between the radiator and your body.

No part of this document may be reproduced, republished, or retransmitted in any form or by any means whatsoever, whether electronically or mechanically, including, but not limited to, by way of photocopying, recording, information recording, or through retrieval systems without the express written permission. We reserve the right to revise this document at any time without the obligation to notify any person and/or entity. All other company or product names mentioned are used for identification purposes only and may be trademarks of their respective owners.

#### LIMITATION OF LIABILITY AND DAMAGES

THE PRODUCT AND THE SOFTWARES WITHIN ARE PROVIDED "AS IS," BASIS. THE MANUFACTURER AND MANUFACTURER'S RESELLERS (COLLECTIVELY REFERRED TO AS "THE SELLERS") DISCLAIM ALL WARRANTIES, EXPRESS, IMPLIED OR STATUTORY, INCLUDING WITHOUT LIMITATION THE IMPLIED WARRANTIES OF NON-INFRINGEMENT, MERCHANTABILITY OR FITNESS FOR A PARTICULAR PURPOSE, OR ANY WARRANTIES ARISING FROM COURSE OF DEALING, COURSE OF PERFORMANCE, OR USAGE OF TRADE. IN NO EVENT WILL THE SELLERS BE LIABLE FOR DAMAGES OR LOSS, INCLUDING BUT NOT LIMITED TO DIRECT, INDIRECT, SPECIAL WILLFUL, PUNITIVE, INCIDENTAL, EXEMPLARY, OR CONSEQUENTIAL, DAMAGES, DAMAGES FOR LOSS OF BUSINESS PROFITS, OR DAMAGES FOR LOSS OF BUSINESS OF ANY CUSTOMER OR ANY THIRD PARTY ARISING OUT OF THE USE OR THE INABILITY TO USE THE PRODUCT OR THE SOFTWARES, INCLUDING BUT NOT LIMITED TO THOSE RESULTING FROM DEFECTS IN THE PRODUCT OR SOFTWARE OR DOCUMENTATION, OR LOSS OR INACCURACY OF DATA OF ANY KIND, WHETHER BASED ON CONTRACT, TORT OR ANY OTHER LEGAL THEORY, EVEN IF THE PARTIES HAVE BEEN ADVISED OF THE POSSIBILITY OF SUCH DAMAGES. THE ENTIRE RISK AS TO THE RESULTS AND PERFORMANCE OF THE PRODUCT OR ITS SOFTWARE IS ASSUMED BY CUSTOMER. BECAUSE SOME STATES DO NOT ALLOW THE EXCLUSION OR LIMITATION OF LIABILITY FOR DAMAGES, THE ABOVE LIMITATION MAY NOT APPLY TO THE PARTIES. IN NO EVENT WILL THE SELLERS' TOTAL CUMULATIVE LIABILITY OF EACH AND EVERY KIND IN RELATION TO THE PRODUCT OR ITS SOFTWARE EXCEED THE AMOUNT PAID BY CUSTOMER FOR THE PRODUCT.