

X6 ADSL MODEM
Series 1084
User Manual

V 1.1

CONTENTS

1.OVERVIEW.....	3
1.1 ABOUT ADSL	3
1.2 ABOUT ADSL2/2+	3
1.3 FEATURES	3
2 SPECIFICATION.....	4
2.1 INTERFACE INTRODUCTION	4
2.1.1 INDICATOR AND INTERFACE.....	4
2.1.2 SPLITTER SPEC	4
2.2 HARDWARE CONNECTION.....	5
2.3 LED STATUS INDICATION	5
3. CONFIGURATION.....	6
3.1 DEFAULT CONFIGURATION	6
3.2 COMPUTER CONFIGURATION	6
3.3 ADSL MODEM CONFIGURATION.....	6
3.3.1 LOG IN.....	6
3.3.2 SAVE SETTING.....	6
3.4 WAN CONFIGURATION	7
3.4.1 CONFIGURATION GUIDE	7
3.4.2 RFC1483 BRIDGE CONFIGURATION.....	9
3.4.3 PPPOE CONFIGURATION	11
3.4.4 STATIC ADDRESS	12
3.5 WIRELESS CONFIGURATION.....	13
3.5.1 WIRELESS SETUP.....	13
3.5.2 WIRELESS SECURITY	13
3.5.3 WIRELESS MAC Filter	15
4 OTHER CONFIGURATION.....	16
4.1 LAN CONFIGURATION.....	16
4.1.1 CONFIGURATION OF MODEM'S IP ADDRESS.....	16
4.1.2 DHCP CONFIGURATION	17
4.2 PASSWORD CONFIGURATION	17
5. TROUBLESHOOTING.....	18
5.1 UNABLE TO ACCESS INTERNET.....	18
5.1.1 CHECK THE LINE AND THE DEVICE	18
5.1.2 CHECK YOUR CONFIGURATION	18
ANNEX: SHIPPING LIST.....	19

1.OVERVIEW

1.1 ABOUT ADSL

An ADSL MODEM is a broadband Internet access device, which utilizes the high frequency segment of the phone line to transmit high-speed data without affecting the voice transmission. The frequency of the ADSL signal is higher than that of voice, so voice and ADSL signal can coexist in one line by using a splitter to insulate each from the other. ADSL data transfer adapts the asymmetry model. It supports upload transmission speed up to 1Mbps and download speed up to 8 Mbps (24Mbps for ADSL2+). ADSL is an ideal device for broadband access.

1.2 ABOUT ADSL2/2+

Transmission performance of ADSL2 is improved comparing with the first generation of ADSL. These improvements are mainly concerned with long distance, anti-line-loss, anti-noise, etc. By doubling the transmission bandwidth, ADSL2+ has implemented a downlink rate as high as 24 Mbps. Therefore, Internet applications such as synchronous transmission of multi video stream, online games and huge capacity of downloading files are made possible.

1.3 FEATURES

- 1、 Support ANSI T1.413 ISSUE 2、 ITU G.992.1 (G.DMT)、 ITU G.992.2 (G.LITE)、 ITU G992.3、 ITU G992.5
- 2、 Web-based configuration and monitoring.
- 3、 Support multiple PVCs.
- 4、 Routing function.
- 5、 NAPT、 DHCP function.

2 SPECIFICATION

2.1 INTERFACE INTRODUCTION

2.1.1 INDICATOR AND INTERFACE

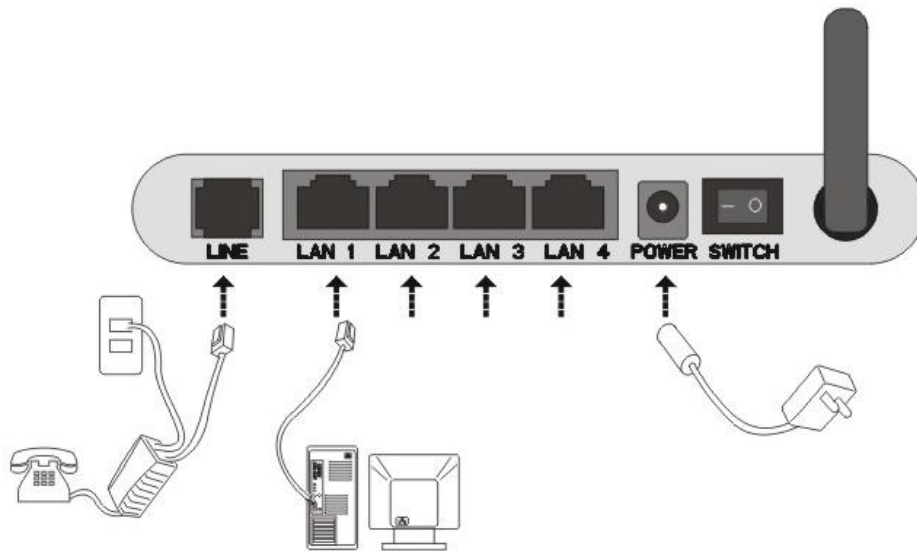


Table 2.1

ITEM	Name	State introduction
Indicator	POWER	A steady red light means the power connection works properly
	DSL	Yellow, shows DSL line status.
	INTERNET	Green, Flashing means the Modem is transmitting or receiving data
	WLAN	Green, Indicates status of connection to the wireless device
Interface	LINE	Connected with phone line or “ADSL” port of the splitter.
	ETHERNET	To be connected to a PC network card by a straight-through network cable, also can use a crossover cable to connect to Hub, Switch or Router.
	SWITCH	Power interface, Connect with power adapter.
	POWER	To turn on / off the power.
	RST	Press the reset button and turn on the power, then keep pressing the reset button for 5 seconds. Then you can reset the modem with the default settings.

2.1.2 SPLITTER SPEC

Table 2.2

Interface	Introduction
LINE	Connected with telephone line
ADSL	Connect with the LINE port of the ADSL Modem using telephone line provided.
PHONE	Connect with telephone

2.2 HARDWARE CONNECTION

Introduction:

- 1、 Use a telephone cord to connect the LINE port of the splitter with the RJ-11 port (the phone jack) on the wall.
- 2、 Use another telephone cord to connect the ADSL port of the splitter with the LINE port of the ADSL Modem.
- 3、 Use another telephone cord to connect the telephone set with the PHONE port of the splitter.
- 4、 Connect Ethernet port of the ADSL MODEM with 10/100BASE-T port of the computer using the network cable that comes with the modem.
- 5、 Plug in the power cord, and turn on the power.

If you do not want Internet services and telephone voice services simultaneously, please just connect the LINE port of the ADSL Modem with the RJ-11 port (the phone jack) on the wall using a telephone cord. In this case, the splitter is not necessary.

2.3 LED STATUS INDICATION

Table 2.3

Status	POWER (red)	DSL (yellow)	INTERNET (green)	WIRELESS(green)
Steady light	Power on	The modem is in good connection	Connected with PC	Wireless is connected
Flashing	/	In handshaking status	/	/
Fast flashing	/	/	Transmitting or receiving data	Transforming data
Off	Power off	Connection not set up	Not connected with PC properly	Wireless is disabled

3. CONFIGURATION

3.1 DEFAULT CONFIGURATION

ADSL MODEM has pre-configured with the VCI/VPI which is in common use. The default dial-up mode is bridge encapsulation. For bridge mode, no need to configure any more parameter. However, the third party dial-up software is needed for connection with the Internet.

3.2 COMPUTER CONFIGURATION

The default IP address for ADSL MODEM is: **192.168.1.1**; The Subnet Mask is: **255.255.255.0**. Users can configure ADSL MODEM through an Internet browser. ADSL MODEM can be used as gateway and DNS server; users need to set the computer's TCP/IP protocol as follow:

- 1、 Set the computer IP address at same segment of ADSL MODEM, such as set the IP address of the network card to one of the “192.168.1.2”~ “192.168.1.254”.
- 2、 Set the computer's gateway the same IP address as the ADSL Modem's.
- 3、 Set computer's DNS server the same as ADSL Modem's IP address or that of an effective DNS server.

3.3 ADSL MODEM CONFIGURATION

3.3.1 LOG IN

Open the browser; input **http://192.168.1.1** at the address column. Press “Enter” key then the entry dialog box will show up as Figure 3.1. Input Username: **admin** , Password: **password** (capital sensitive), then press Enter.

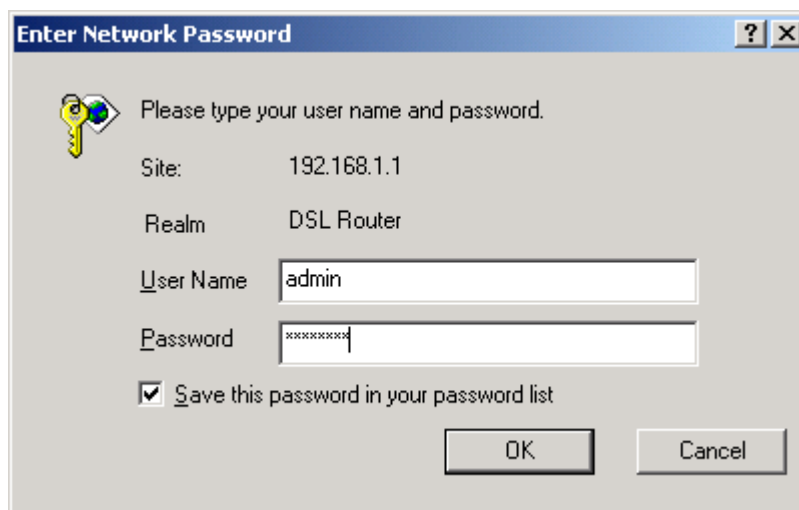


Figure 3.1

3.3.2 SAVE SETTING

After getting through each page for parameters setting, click “Save” or “Save apply” to store the value in ADSL MODEM. Briefly, we named “Save”.

Note:

When you save the settings, the web page will be refreshed slowly, please wait it finished.

After you save the settings, it will take effect until next reboot.

Some settings only take effect after rebooting the router.

3.4 WAN CONFIGURATION

If the configuration is bridge encapsulation, there is no need to configure any more parameters. Only need to use the third party dial-up software to connect the Internet.

Totally, this router supports: PPPoA, PPPoE, MER, IPoA, Bridging. For detail configuration information, please check the following configuration guide.

3.4.1 CONFIGURATION GUIDE

Click “WAN” on the left page, enter into “WAN” configuration page.

- I Note: At most we can have eight connections. If you need to add a new connection, please delete or modify an existing connection.

Device Info

Quick Setup

Advanced Setup

WAN

LAN

Quality of Service

Routing

DSL

Interface Group

IPSec

Certificate

Wireless

Diagnostics

Management

Wide Area Network (WAN) Setup

Choose Add, Edit, or Remove to configure WAN interfaces.
Choose Save/Reboot to apply the changes and reboot the system.

Port/Vpi/Vci	VLAN Mux	Con. ID	Category	Service	Interface	Protocol	Igmp	QoS	State	Remove	Edit
0/0/32	Off	1	UBR	br_0_0_32	nas_0_0_32	Bridge	N/A	Disabled	Enabled	<input type="checkbox"/>	Edit
0/8/35	Off	1	UBR	br_0_8_35	nas_0_8_35	Bridge	N/A	Disabled	Enabled	<input type="checkbox"/>	Edit
0/0/35	Off	1	UBR	br_0_0_35	nas_0_0_35	Bridge	N/A	Disabled	Enabled	<input type="checkbox"/>	Edit
0/8/81	Off	1	UBR	br_0_8_81	nas_0_8_81	Bridge	N/A	Disabled	Enabled	<input type="checkbox"/>	Edit
0/14/34	Off	1	UBR	br_0_14_34	nas_0_14_34	Bridge	N/A	Disabled	Enabled	<input type="checkbox"/>	Edit
0/0/100	Off	1	UBR	br_0_0_100	nas_0_0_100	Bridge	N/A	Disabled	Enabled	<input type="checkbox"/>	Edit
0/0/33	Off	1	UBR	br_0_0_33	nas_0_0_33	Bridge	N/A	Disabled	Enabled	<input type="checkbox"/>	Edit
0/0/40	Off	1	UBR	br_0_0_40	nas_0_0_40	Bridge	N/A	Disabled	Enabled	<input type="checkbox"/>	Edit

Figure 3.2

Click on the next connection which you want modify. Press “Edit” button, enter the configure guide, as Figure 3.3

Device Info
Quick Setup
Advanced Setup
WAN
LAN
Quality of Service
Routing
DSL
Interface Group
IPSec
Certificate
Wireless
Diagnostics
Management

ATM PVC Configuration
This screen allows you to configure an ATM PVC identifier (PORT and VPI and VCI) and select a service category. Otherwise choose an existing interface by selecting the checkbox to enable it.

PORT: [0-3]
VPI: [0-255]
VCI: [32-65535]

VLAN Mux - Enable Multiple Protocols Over a Single PVC

Service Category:

Enable Quality Of Service

Enabling packet level QoS for a PVC improves performance for selected classes of applications. QoS cannot be set for CBR and Realtime VBR. QoS consumes system resources; therefore the number of PVCs will be reduced. Use **Advanced Setup/Quality of Service** to assign priorities for the applications.

Enable Quality Of Service

Figure 3.3

- I The value for VPI/VCI is assigned by your ISP. After inputting the PVC value, press “Next” into “connection type”. As Figure 3.4.

Device Info
Quick Setup
Advanced Setup
WAN
LAN
Quality of Service
Routing
DSL
Interface Group
IPSec
Certificate
Wireless
Diagnostics
Management

Connection Type

Select the type of network protocol for IP over Ethernet as WAN interface

PPP over ATM (PPPoA)
 PPP over Ethernet (PPPoE)
 MAC Encapsulation Routing (MER)
 IP over ATM (IPoA)
 Bridging

Encapsulation Mode

Figure 3.4

The Modem supports five ADSL protocol modes. Choose the protocol which is appointed by ISP and PVC encapsulation, click “Next” enter to the protocol configure. Below, we introduce the configuraion of the five protocol modes.

- PPP over ATM (PPPoA)
- PPP over Ethernet (PPPoE)
- MAC Encapsulated Routing (MER)
- IP over ATM (IPoA)
- Bridging

- I Some connection lines need to confirm the LLC or VC, if you can’t confirm, please don’t modify the default value or ask your ISP.

3.4.2 RFC1483 BRIDGE CONFIGURATION

Select the Bridging mode. Then press “Next” to specify the Service Name, and select the “Enable Service” as Figure 3.5.

Device Info
Quick Setup
Advanced Setup
WAN
LAN
Quality of Service
Routing
DSL
Interface Group
IPSec
Certificate
Wireless
Diagnostics
Management

Unselect the check box below to disable this WAN service

Enable Bridge Service:

Service Name:

Back Next

Figure 3.5

Press “Next” to enter into “WAN configuration”, click “save” to save configuration, if you need to modify the parameter, click “back” as Figure 3.6.

Device Info
Quick Setup
Advanced Setup
WAN
LAN
Quality of Service
Routing
DSL
Interface Group
IPSec
Certificate
Wireless
Diagnostics
Management

WAN Setup - Summary

Make sure that the settings below match the settings provided by your ISP.

PORT / VPI / VCI:	0 / 8 / 35
Connection Type:	Bridge
Service Name:	br_0_8_35
Service Category:	UBR
IP Address:	Not Applicable
Service State:	Enabled
NAT:	Disabled
Firewall:	Disabled
IGMP Multicast:	Not Applicable
Quality Of Service:	Disabled

Click "Save" to save these settings. Click "Back" to make any modifications.
NOTE: You need to reboot to activate this WAN interface and further configure services over this interface.

Back Save

Figure 3.6

Note: When you use bridge mode, please close “DHCP SERVER”, the result as Figure 3.7

Device Info Quick Setup Advanced Setup WAN LAN Quality of Service Routing DSL Interface Group IPSec Certificate Wireless Diagnostics Management	<h3>Local Area Network (LAN) Setup</h3> <p>Configure the DSL Router IP Address and Subnet Mask for LAN interface. Save button only saves the LAN configuration data. Save/Reboot button saves the LAN configuration data and reboots the router to make the new configuration effective.</p> <p>IP Address: <input type="text" value="192.168.1.1"/></p> <p>Subnet Mask: <input type="text" value="255.255.255.0"/></p> <p><input type="checkbox"/> Enable IGMP Snooping</p> <p><input checked="" type="radio"/> Standard Mode</p> <p><input type="radio"/> Blocking Mode</p> <p><input type="radio"/> Disable DHCP Server</p> <p><input checked="" type="radio"/> Enable DHCP Server</p> <p>Start IP Address: <input type="text" value="192.168.1.2"/></p> <p>End IP Address: <input type="text" value="192.168.1.254"/></p> <p>Subnet Mask: <input type="text" value="255.255.255.0"/></p> <p>Leased Time (hour): <input type="text" value="24"/></p> <p>Static IP Lease List: Please click on Save/Reboot button to make the new configuration effective. (A maximum 32 entries can be configured)</p> <table border="1"> <thead> <tr> <th>MAC Address</th> <th>IP Address</th> <th>Remove</th> </tr> </thead> <tbody> <tr> <td colspan="3" style="text-align: center;"> <input type="button" value="Add Entries"/> <input type="button" value="Remove Entries"/> </td> </tr> </tbody> </table> <p><input type="radio"/> Enable DHCP Server Relay</p> <p>DHCP Server IP Address: <input type="text"/></p> <p><input type="checkbox"/> Configure the second IP Address and Subnet Mask for LAN interface</p> <p style="text-align: right;"> <input type="button" value="Save"/> <input type="button" value="Save/Reboot"/> </p>	MAC Address	IP Address	Remove	<input type="button" value="Add Entries"/> <input type="button" value="Remove Entries"/>		
MAC Address	IP Address	Remove					
<input type="button" value="Add Entries"/> <input type="button" value="Remove Entries"/>							

Figure 3.7

3.4.3 PPPOE CONFIGURATION

PPPoE is also known as RFC 2516. It is a method of encapsulating PPP packets over Ethernet.

PPPoA is also known as RFC2364 and named as Peer to Peer Protocol over ATM. As PPPoE, it also has all the features of PPP. Although it's based on ATM protocol, the setting of all the other parameters is similar with PPPoE. So we only introduce PPPoE in detail here.

In Figure 3.4, select PPP over Ethernet (PPPoE), press “Next step” entering the configuring interface, as Figure 3.8.

Device Info
Quick Setup
Advanced Setup
WAN
LAN
Quality of Service
Routing
DSL
Interface Group
IPSec
Certificate
Wireless
Diagnostics
Management

PPP Username and Password

PPP usually requires that you have a user name and password to establish your connection. In the boxes below, enter the user name and password that your ISP has provided to you.

PPP Username:

PPP Password:

PPPoE Service Name:

Authentication Method:

Enable Fullcone NAT

Manual connect

Dial on demand (with idle timeout timer)

MTU [1000-2000]:

PPP IP extension

Use Static IP Address

Retry PPP password on authentication error

Enable PPP Debug Mode

Bridge PPPoE Frames Between WAN and Local Ports (Default Enabled)

Figure 3.8

- I PPP Account: Your account from ISP to access Internet.
- I Password: Input the password assigned by your ISP.
- I PPPoE server name: Server name of network ISP. No need to set.
- I Authentication Mode: Authentication mode of network ISP. Default is AUTO.
- I Connection on demand: When this mode is selected, the connection that has no traffic within assigned disconnect timeout (e.g. 1 minute) will be automatically disconnected. The connection will be activated again when traffic arrives. This function is advantageous for users who are charged with online time. It should be noticed that some programs automatically link to Internet. Computer will send data to network when infected by virus. Connection will not be disconnected under these data streams.
- I Disconnect timeout: When “Connection on demand” is selected, this input box indicates that after how long the connection will be disconnected in the absence of traffic. If the value is 0, connection will not be

disconnected.

Press “Next step” when configuration is finished. The following operation is same with Figure 3.5. Notice that PPPoE mode does not work until the modem is reset.

3.4.4 STATIC ADDRESS

In Figure3.4, select MAC Encapsulation Routing (MER), press “Next”, and the configuration can be queried from your ISP, the result as Figure3.9.

<p>Device Info</p> <p>Quick Setup</p> <p>Advanced Setup</p> <p>WAN</p> <p>LAN</p> <p>Quality of Service</p> <p>Routing</p> <p>DSL</p> <p>Interface Group</p> <p>IPSec</p> <p>Certificate</p> <p>Wireless</p> <p>Diagnostics</p> <p>Management</p>	<p>WAN IP Settings</p> <p>Enter information provided to you by your ISP to configure the WAN IP settings. Notice: DHCP can be enabled for PVC in MER mode or IP over Ethernet as WAN interface if "Obtain an IP address automatically" is chosen. Changing the default gateway or the DNS effects the whole system. Configuring them with static values will disable the automatic assignment from DHCP or other WAN connection. If you configure static default gateway over this PVC in MER mode, you must enter the IP address of the remote gateway in the "Use IP address". The "Use WAN interface" is optional.</p> <p> <input type="radio"/> Obtain an IP address automatically <input checked="" type="radio"/> Use the following IP address: WAN IPv4 Address: <input type="text" value="202.96.133.11"/> WAN Subnet Mask: <input type="text" value="255.255.255.0"/> </p> <p> <input type="radio"/> Obtain default gateway automatically <input checked="" type="radio"/> Use the following default gateway: <input checked="" type="checkbox"/> Use IPv4 Address: <input type="text" value="218.96.133.23"/> <input type="checkbox"/> Use WAN Interface: <input type="button" value="v"/> </p> <p> <input type="radio"/> Obtain DNS server addresses automatically <input checked="" type="radio"/> Use the following DNS server addresses: Primary DNS server: <input type="text" value="202.96.209.133"/> Secondary DNS server: <input type="text" value="202.96.209.5"/> </p> <p style="text-align: right;"> <input type="button" value="Back"/> <input type="button" value="Next"/> </p>
---	---

Figure 3.9

3.5 WIRELESS CONFIGURATION

Press “**Wireless**” on the top of web pages to enter wireless section. You can select to configure wireless setup, security and management.

Device Info

Quick Setup

Advanced Setup

Wireless

Basic

Security

MAC Filter

Wireless Bridge

Advanced

Station Info

Diagnostics

Management

Wireless -- Basic

This page allows you to configure basic features of the wireless LAN interface. You can enable or disable the wireless LAN interface, hide the network from active scans, set the wireless network name (also known as SSID) and restrict the channel set based on country requirements. Click "Apply" to configure the basic wireless options.

Enable Wireless

Hide Access Point

Clients Isolation

Disable WMM Advertise

SSID:

BSSID:

Country:

Max Clients:

Wireless - Guest/Virtual Access Points:

Enabled	SSID	Hidden	Isolate Clients	Disable WMM Advertise	Max Clients	BSSID
<input type="checkbox"/>	<input type="text" value="Guest"/>	<input type="checkbox"/>	<input type="checkbox"/>	<input type="checkbox"/>	<input type="text" value="16"/>	N/A
<input type="checkbox"/>	<input type="text" value="Guest1"/>	<input type="checkbox"/>	<input type="checkbox"/>	<input type="checkbox"/>	<input type="text" value="16"/>	N/A
<input type="checkbox"/>	<input type="text" value="Guest2"/>	<input type="checkbox"/>	<input type="checkbox"/>	<input type="checkbox"/>	<input type="text" value="16"/>	N/A

3.5.1 WIRELESS SETUP

Click “**Setup**” on the left menu to setup basic wireless parameters. In default, check “Enable Wireless” box to launch wireless AP.

- 1 **SSID** (Service Set Identifier): The mobile users cannot access WLAN until setting their SSID as the same value of the wireless ADSL. The SSID value of the ADSL is “default”
- 1 **Hidden Access Point:** If checked, wireless station will no see SSID of the ADSL.

3.5.2 WIRELESS SECURITY

Press “**Security**” on the left menu to construct wireless security. You can select to configure WEP encryption, Shared, 802.1x, WPA, and WPA2 authentication.

- 1 **WEP Encryption**
Select “Enabled” of the WEP encryption list. You can enter WEP encryption page.

Encryption Strength: Key length: 128bits or 64bits.

Network Key 1-4: Up to four keys that are in form of hex digitals could be set. Mobile users can't access the AP if they haven't set the same key as AP. For 64bits and 128bits keys, you should input 10 and 26 hexadecimal digitals or 5 and 13 ASCII characters respectively. Every two digitals should be comparted with others by a space character. For example: "7890ABCDEF" (hexadecimal digitals) or "QWERT" (ASCII characters) for a key length of 64bits.

<p>Device Info</p> <p>Quick Setup</p> <p>Advanced Setup</p> <p>Wireless</p> <p>Basic</p> <p>Security</p> <p>MAC Filter</p> <p>Wireless Bridge</p> <p>Advanced</p> <p>Station Info</p> <p>Diagnostics</p> <p>Management</p>	<p>Wireless -- Security</p> <p>This page allows you to configure security features of the wireless LAN interface. You may setup configuration manually</p> <p>Manual Setup AP</p> <p>You can set the network authentication method, selecting data encryption, specify whether a network key is required to authenticate to this wireless network and specify the encryption strength. Click "Save/Apply" when done.</p> <p>Select SSID: <input type="text" value="Broadcom"/></p> <p>Network Authentication: <input type="text" value="Open"/></p> <p>WEP Encryption: <input type="text" value="Disabled"/></p> <p><input type="button" value="Save/Apply"/></p>
---	---

I 802.1x Authentication

Select "802.1x" to enter 802.1x authentication page.

The 802.1x authentication needs a Radius server in LAN. In this page, you can input Radius server IP address, port number and secret key.

Network Authentication:	<input type="text" value="802.1X"/>
RADIUS Server IP Address:	<input type="text" value="0.0.0.0"/>
RADIUS Port:	<input type="text" value="1812"/>
RADIUS Key:	<input type="text"/>

3.5.3 WIRELESS MAC FILTER

In fact, the Access List function is just like MAC address filtering and selected to permit or forbid access of wireless station with specified MAC address.

Method: select “Allow” or “Deny” mode, and click “Add” button, and input MAC address which you want to allow or deny.

The screenshot shows the 'Wireless -- MAC Filter' configuration page. On the left is a navigation menu with the following items: Device Info, Quick Setup, Advanced Setup, Wireless (selected), Basic, Security, MAC Filter, Wireless Bridge, Advanced, Station Info, Diagnostics, and Management. The main content area is titled 'Wireless -- MAC Filter' and contains the following elements:

- 'Select SSID:' dropdown menu with 'Broadcom' selected.
- 'MAC Restrict Mode:' with three radio buttons: 'Disabled' (selected), 'Allow', and 'Deny'.
- A table with two columns: 'MAC Address' and 'Remove'. The table contains one row with the MAC address '11:22:33:44:55:66' and an unchecked checkbox in the 'Remove' column.
- 'Add' and 'Remove' buttons at the bottom.

Notice: You only can select one of allow mode or deny mode.

4 OTHER CONFIGURATION

4.1 LAN CONFIGURATION

Configuration of Modem's IP address and password

4.1.1 CONFIGURATION OF MODEM'S IP ADDRESS

As a network device, ADSL Modem has its own IP address and MAC address. The factory sets the MODEM, at a default IP address of 192.168.1.1 and subnet mask of 255.255.255.0. The user can configure these addresses through the "LAN" on "Configuration" like this:

For example, change IP address to "10.10.10.10". Click "LAN", input "IP address": 10.10.10.10, then "subnet mask": 255.0.0.0, the result is as Figure 4.1, press "save".

Device Info
Quick Setup
Advanced Setup
WAN
LAN
Quality of Service
Routing
DSL
PPTP
Interface Group
IPSec
Certificate
Wireless
Diagnostics
Management

Local Area Network (LAN) Setup

Configure the DSL Router IP Address and Subnet Mask for LAN interface. Save button only saves the LAN configuration data. Save/Reboot button saves the LAN configuration data and reboots the router to make the new configuration effective.

IP Address:

Subnet Mask:

Enable IGMP Snooping

Standard Mode

Blocking Mode

Disable DHCP Server

Enable DHCP Server

Start IP Address:

End IP Address:

Subnet Mask:

Leased Time (hour):

Static IP Lease List: Please click on Save/Reboot button to make the new configuration effective. (A maximum 32 entries can be configured)

MAC Address	IP Address	Remove

Enable DHCP Server Relay

DHCP Server IP Address:

Configure the second IP Address and Subnet Mask for LAN interface

Figure 4.1

Note: If you change IP address, it will take effect after you reboot the modem. You must use the new IP address to login.

4.1.2 DHCP CONFIGURATION

- click “LAN ”
- click “DHCP server”;
- Define the “Start IP address” and the “End IP address” of DHCP server (for example, from 10.10.10.11 to 10.10.10.254).
- Input the value of lease (Measured by the second, 0 indicates permanently valid).

As Figure 4.2, open DHCP server, computer will set the IP Address of network card with one of the address 10.10.10.11 ~ 10.10.10.254.

Disable DHCP Server
 Enable DHCP Server

Start IP Address:
 End IP Address:
 Subnet Mask:
 Leased Time (hour):

Static IP Lease List: Please click on Save/Reboot button to make the new configuration effective. (A maximum 32 entries can be configured)

MAC Address	IP Address	Remove
<input type="text"/>	<input type="text"/>	<input type="button" value="Remove"/>

Figure 4.2

Note: When you use the DHCP Server, please pay attention to having multi-DHCP Server in one LAN.

4.2 PASSWORD CONFIGURATION

When you configure ADSL MODEM through an Internet browser, the system requires user name and password to validate access permission. The factory sets the modem at a default username of “**admin**” and the password of “**password**”. The username is unchanged. You can enter the “password configuration” on Configuration column to change the password.

Attention: please remember the password after change, otherwise you will not be able to change configuration after saving setting

5. TROUBLESHOOTING

5.1 UNABLE TO ACCESS INTERNET

5.1.1 CHECK THE LINE AND THE DEVICE

- 1、 Check the indicator of power supply is on, if not, Make sure the connection of power supply is correct; Make sure the output of power supply is correct; Make sure the switch of power supply is turned on;
- 2、 Check the indicator of PC is on, if not, Make sure the connection of cable and network adapter; Make sure that the correct cable is used;
- 3、 Check the LINK LED to see if it is twinkling. If no fast twinkling is observed within 3 minutes, please check whether phone line has been correctly placed; whether ADSL separator is correctly used. If multiple extensions have been installed, make sure that the separator is installed prior to the junction box of phone line. If the above items are confirmed and still no fast twinkling of WAN LED is observed, call the ISP to query whether ADSL service has been provided on your line;
- 4、 Check the LINK LED to see whether it is unable to change status from fast twinkling to always light, or whether it changes status to fast twinkling after sometime of always light. If these phenomena occur constantly, please contact your ISP with a demand to check lines and signal quality;

If there is no problem in the above items, the line and the device shall be working. Problems may come from your computer configuration or device configuration.

5.1.2 CHECK YOUR CONFIGURATION

We explain here the configuration of PPPOE using Windows 2000 operation system as an example. For other operation systems the process is similar.

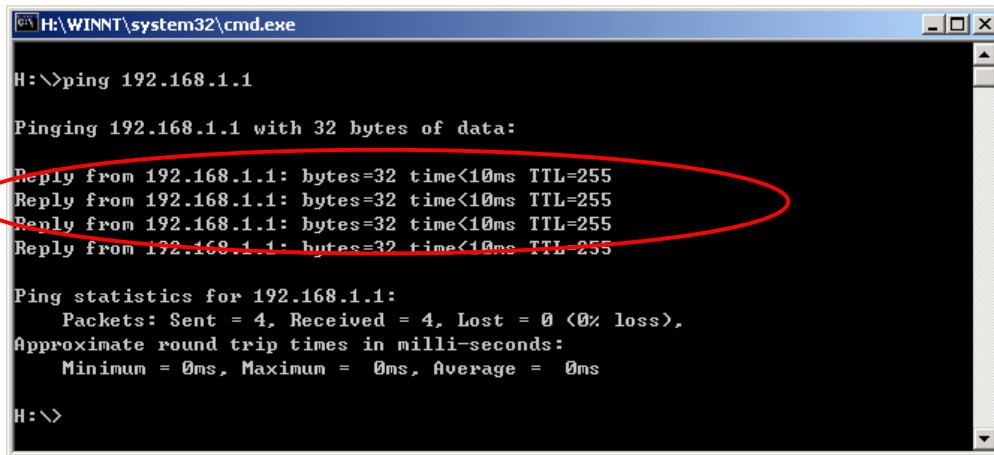
- 1、 Enter the device manager to check if Ethernet adapter is correctly installed. If any problem exists, please re-installed it;
- 2、 Check the configuration of Ethernet adapter in PC. Try to manually set IP address that is in band 192.168.1.x without conflict. See 3.2;
- 3、 Try to run command “ping 192.168.1.1” on command line mode. If the response returns “time out”, please check Ethernet connection and IP settings;
- 4、 If this modem is reachable, try to run ping with a known outer IP, e.g. the DNS server IP of ShangHai Online: “ping 202.96.209.133”.
 - l If ping is reachable, there shall be no problems in the modem. Please see step 5;
 - l If ping is not reachable, see step 6 and check if the configuration is correct.
- 5、 Please try to ping a certain outer URL, e.g. “ping www.google.com”.
 - l If ping is reachable, there shall be no problems in the network settings. Please check the settings of the PC terminal, e.g. whether the security level is too high, or whether anti-virus firewall is installed;
 - l If ping is not reachable, check the DNS setting of Ethernet adapter. See 3.2.

Note 1: The precondition is that LAN settings in the modem has not been modified.

Note 2: We usually start command line mode in Windows 2000 as follows: click on the “RUN” item of Windows Start Menu, input characters “cmd” in the input box popped up with an “Enter”. The window

subsequently popped up is the command line window.

Note 3: The returned values of ping command in the following format show the standard of “reachable”



```

H:\>ping 192.168.1.1

Pinging 192.168.1.1 with 32 bytes of data:

Reply from 192.168.1.1: bytes=32 time<10ms TTL=255
Reply from 192.168.1.1: bytes=32 time<10ms TTL=255
Reply from 192.168.1.1: bytes=32 time<10ms TTL=255
Reply from 192.168.1.1: bytes=32 time<10ms TTL=255

Ping statistics for 192.168.1.1:
    Packets: Sent = 4, Received = 4, Lost = 0 (0% loss),
    Approximate round trip times in milli-seconds:
        Minimum = 0ms, Maximum = 0ms, Average = 0ms

H:\>
  
```

Figure 5.1

- 6、 If ping of the modem is reachable but ping of the outer fixed IP is unreachable, attention should be concentrated upon device settings. Please enter the configuring interface following the instructions in this manual.
 - (1) Check first the number of connections. If more than one connection exists, for troubleshooting , delete unused connections and remain the one connection you are using.
 - (2) Check the connection to see whether correct “type” is selected. It’s normal to choose login type of PPPoE. When you use PPPoE to login, the following information should be provided: VPI and VCI, which can be queried from your ISP, user name and password.
 - (3) Then make sure that “using NAT” and “default gateway” have been selected with a tick. Check whether “connect on demand” has been selected with a tick. If it is selected, the connection is activated only when traffic to outer networks arrives. If not selected, check “keep connection”, which should be set to 0 if you demand to keep connection

Make sure that the above parameters are saved after configuration. Internet is now available since the configuration is properly done.

About FCC certification:

This device complies with Part15 and Part68 of the FCC Rules.Operation is subject to the following conditions: (1) this device may not cause harmful interference,and (2) this device must accept any interference received,including interference that may cause undesired operation

ANNEX: SHIPPING LIST

ADSL MODEM	×1
Splitter	×1
User Manual	×1
Power Supply	×1
Cable Cat5 RJ45	×1
Telephone Line	×2
Warranty Certificate	×1

FCC INFORMATION

This equipment complies with CFR 47, Part 15.19 of the FCC rules. Operation of the equipment is subject to the following conditions: (1) this device may not cause harmful interference, and (2) this device must accept any interference received; including interference that may cause undesired operation.

THIS DEVICE MUST NOT BE CO-LOCATED OR OPERATING IN CONJUNCTION WITH ANY OTHER ANTENNA OR TRANSMITTER

NOTE: THE MANUFACTURER IS NOT RESPONSIBLE FOR ANY RADIO OR TV INTERFERENCE CAUSED BY UNAUTHORIZED MODIFICATIONS TO THIS EQUIPMENT. SUCH MODIFICATIONS COULD VOID THE USER'S AUTHORITY TO OPERATE THE EQUIPMENT.

Federal Communications Commission (FCC) Requirements, Part 15

This equipment has been tested and found to comply with the limits for a class B digital device, pursuant to part 15 of the FCC Rules. These limits are designed to provide reasonable protection against harmful interference in a residential installation.

This equipment generates, uses and can radiate radio frequency energy and, if not installed and used in accordance with the instructions, may cause harmful interference to radio communications. However, there is no guarantee that interference will not occur in a particular installation. If this equipment does cause harmful interference to radio or television reception, which can be determined by turning the equipment off and on, the user is encouraged to try to correct the interference by one or more of the following measures:

- Reorient or relocate the receiving antenna.
- Increase the separation between the equipment and receiver.
- Connect the equipment into an outlet on a circuit different from that to which the receiver is connected.
- Consult the dealer or an experienced radio/TV technician for help.

REGULATORY INFORMATION / DISCLAIMERS

Installation and use of this Wireless LAN device must be in strict accordance with the instructions included in the user documentation provided with the product. Any changes or modifications (including the antennas) made to this device that are not expressly approved by the manufacturer may void the user's authority to operate the equipment. The manufacturer is not responsible for any radio or television interference caused by unauthorized modification of this device, or the substitution of the connecting cables and equipment other than manufacturer specified. It is the responsibility of the user to correct any interference caused by such unauthorized modification, substitution or attachment. Manufacturer and its authorized resellers or distributors will assume no liability for any damage or violation of government

CAUTION: To maintain compliance with FCC's RF exposure guidelines, this equipment should be installed and operated with minimum distance 20cm between the radiator and your body. Use on the supplied antenna. Unauthorized antenna, modification, or attachments could damage the transmitter and may violate FCC regulations.

MPE Statement (Safety Information)

Your device contains a low power transmitter. When device is transmitted it sends out Radio Frequency (RF) signal.

SAFETY INFORMATION

In order to maintain compliance with the FCC RF exposure guidelines, this equipment should be installed and operated with minimum distance 20cm between the radiator and your body. Use only with supplied antenna. Unauthorized antenna, modification, or attachments could damage the transmitter and may violate FCC regulations.