



# Quick Start Guide

SR360n

This Quick Start Guide shows you how to set up and begin using your new Gateway

# LED INDICATORS

The LEDs on the front panel of the unit can assist you in better understanding the current state of your modem.



	POWER	LAN 1-4	WLAN	WPS	DSL	INTERNET
DSL sync in progress	●				⚙️	
DSL sync acquired and gateway online	●				●	●
Gateway online and data transfer in progress	●				●	⚙️
IP connection failure	●					○
Wi-Fi enabled on modem	●		●			
PC / network activity / data transfer	●	●/⚙️	●/⚙️			●/⚙️
WPS Setup procedure in progress	●		●	⚙️		
WPS Connection completed successfully	●		●	●		

● : On    ○ : Off    ⚙️ : Blinking / active

# INSTALLATION

Connect one end of the supplied DSL cable to the port labeled DSL on the gateway. Connect the other end of the supplied DSL cable to the DSL wall jack installed by your provider.

For all other devices, connect the end of the Ethernet cable from that device into any of the LAN ports on the gateway.

Connect the power cord into the wall outlet and into the power jack on the back of the gateway. For additional protection, connect the power cord into a surge protector.

Turn on the gateway by pressing the power button on the back of the gateway.

Your gateway is automatically being set up to connect to the Internet. This process may take a few minutes to complete before you begin using your internet applications (browser, email, etc.). If you are unable to connect to the Internet, confirm all cable connections and ensure that the router's power is turned on.

1

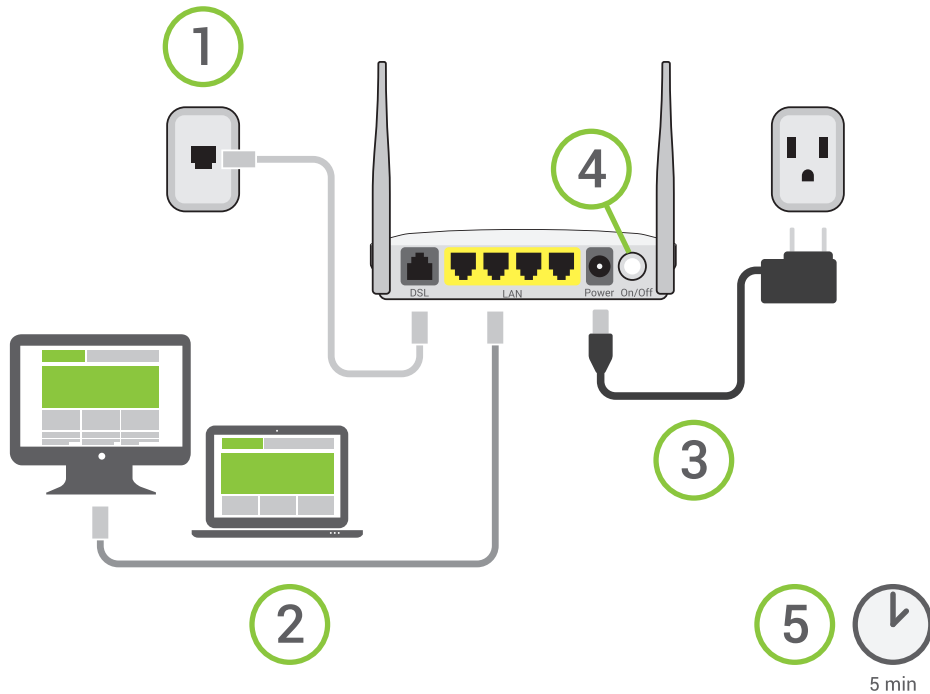
2

3

4

5

# INSTALLATION

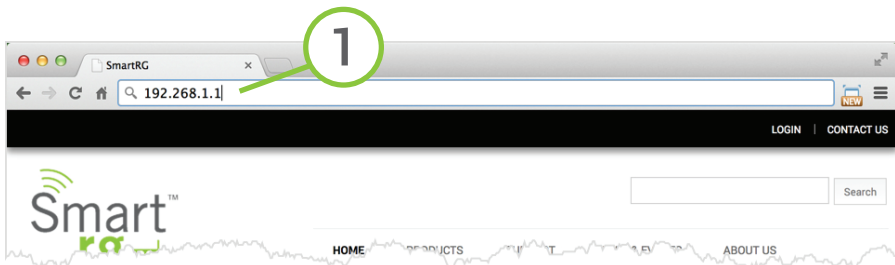


# QUICK GATEWAY CONFIGURATION

## Logging in to your Gateway:

In order to change the settings on your gateway, you must first login. Ensure that you have completed the above physical installation steps before you begin.

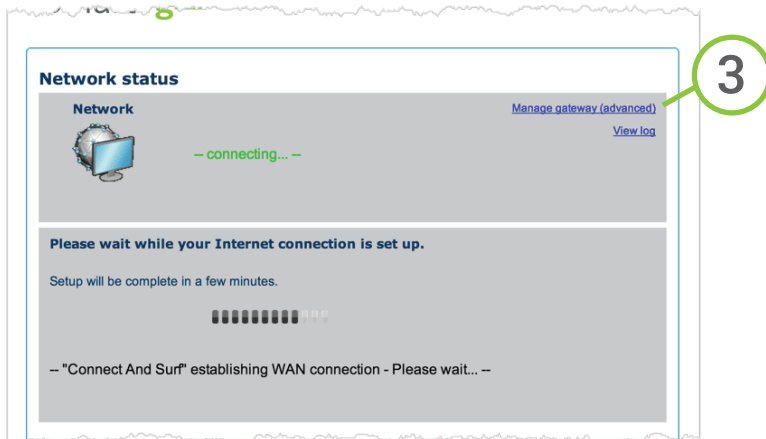
Open your internet browser application and type 192.168.1.1 into the address line.



1

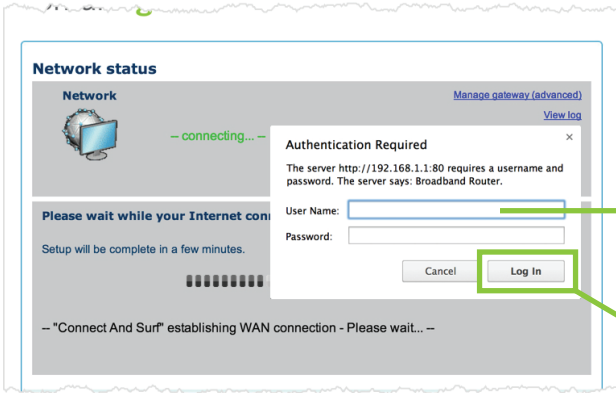
## QUICK GATEWAY CONFIGURATION

- 2 The following screen appears. Wait while the Gateway automatically connects to your service provider.



- 3 When the connection is complete, **OK** will appear in green letters next to the Network icon. Click the **Manage gateway (advanced)** link in the upper right. The login dialogue will appear.

# QUICK GATEWAY CONFIGURATION



You may login with the factory default credentials shown below.

**User Name:** admin

**Password:** admin

Click the **Log In** button in the lower right.

4

*Note: In some cases, your service provider has other settings. Please contact your provider for logon information*

## Manual Configuration of the WAN:

In the event that the automatic connect process is unsuccessful, refer to the **WAN connection setup** chapter in the **User Guide** for this gateway to manually establish a connection.

# QUICK GATEWAY CONFIGURATION

## WiFi Setup

Two methods are available for WiFi setup. Complete these first three steps then the remaining steps for the specific method you desire.

1. From the left navigation bar, click **Wireless / Basic**.
2. Check the **Enable Wireless** checkbox.
3. If desired, customize the **SSID** field to whatever network name you wish to have your client devices connect to.

The screenshot shows the 'Wireless -- Basic' configuration page. On the left is a green navigation sidebar with a circled '1' next to the 'Basic' option. The main content area has a circled '2' next to the 'Enable Wireless' checkbox. Below the checkboxes are fields for SSID (SmartRG0001), BSSID (02:10:18:01:00:03), Country (UNITED STATES), and Max Clients (16). A circled '3' points to the SSID field.

**1** Device Info  
Advanced Setup  
Wireless  
Basic  
Security  
MAC Filter  
Wireless Bridge  
Advanced  
Station Info  
Diagnostics  
Management

**2** **Wireless -- Basic**

This page allows you to configure basic features of the wireless LAN interface. You can enable or disable the wireless LAN interface, hide the network from active scans, set the wireless network name (known as SSID) and restrict the channel set based on country requirements. Click "Apply/Save" to configure the basic wireless options.

Enable Wireless

Enable Wireless Hotspot2.0 [WPA2 is required!]

Hide Access Point

Clients Isolation

Disable WMM Advertise

Enable Wireless Multicast Forwarding (WMM)

**3** SSID: SmartRG0001

BSSID: 02:10:18:01:00:03

Country: UNITED STATES

Max Clients: 16



# QUICK GATEWAY CONFIGURATION

## WPS Method

If the device you wish to connect to the internet via your SmartRG gateway supports WPS secure WiFi connection method, you may follow these steps.

1. From the left navigation bar, click **Wireless / Security**
2. Select the drop-down menu **Enable WPS**. Click the Apply/Save button to commit your selection.
3. On the top of the gateway's enclosure, press the button labeled **WPS**.
4. Within 2 minutes, activate **WPS** on your 3rd party device you wish to connect. It may have a physical pushbutton on it's exterior or possibly a software interface is used to initiate WPS connection.

To learn how to use the WPS feature on your client device, refer to its documentation.

Your device should now be connected to your router wirelessly using WPS. If you encounter problems with the WPS setup such as **Connection Failure! Your client device failed to connect to the network**. Refer back to your client device for further instructions.

# QUICK GATEWAY CONFIGURATION

## Manual Method

Set up your Gateway's parameters first, then:

1. From the left navigation bar, select **Wireless / Security** and scroll down to the **Manual Setup AP** section.
2. If your gateway supports multiple wireless networks, select the **SSID** of the network you wish to configure.
3. Select your desired **Network Authentication** from the drop-down menu. Ensure that the host devices you intend to use support your chosen authentication type.
4. Choose a **WPA Passphrase** and type it in to this field. You'll need this later when setting up your client devices.
5. Select any desired **encryption preferences** in the lower three fields.
6. Click **Apply / Save**.
7. Follow the WiFi connection instructions provided with your client device(s) to connect to the Router. When browsing for available networks, remember the **SSID name** you established in Step 2. Enter the passphrase in the appropriate location at the setup network setup screen of your WiFi client device.

## ADDITIONAL SUPPORT

If you require further instructions, please contact SmartRG support at [support@smartrg.com](mailto:support@smartrg.com) or contact your SmartRG Sales Engineer.

[www.smartrg.com](http://www.smartrg.com)

SmartRG, 501 SE Columbia Shores Blvd., Suite 500, Vancouver WA, 98661 USA

SmartRG Inc. All Rights Reserved. Copyright 2014 ©

# RECORD YOUR SR360n WiFi SETTINGS



Preset wireless settings on your router:

WiFi network name (SSID)

Network key (password)

If you change the preset wireless settings:

WiFi network name (SSID)

Network key (password)