

Start Here ▶▶▶

1 Check Package Contents & Requirements

Package Contents

- 1x Wireless-150N Router with Range Amplifier
- 1x Power Adapter
- 2x Dipole Antennas
- 1x Setup CD-ROM
- 1x Quick Installation Guide (QIG)
- 1x Ethernet Cable

Requirements

- Internet Access
- PC/Mac Computer
- Power Outlet

2 Overview

LED DESCRIPTION

LAN Ports (1-4)

LED is on, when a connection (with the specific port) between a PC and the router/network is detected.

Internet Connection

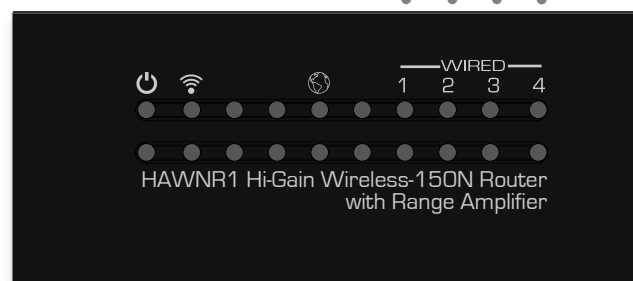
LED is on, when there is an established connection with a cable/DSL modem.

Wireless

LED is on, (blinking) when wireless data activity is detected.

Power

LED is on, when the power adapter is connected and plugged in to an outlet.



BACK PANEL DESCRIPTION

Removable Antennas

Removable Omni-Directional Antennas

Wireless Radio On/Off Switch

Turns off the wireless functions

Reset Switch / WPS

Resets your router to its default settings / initiates WPS Setup

LAN Ports

Connects your wired network devices and computers to your network

Modem Port

For connecting directly to your Broadband Modem's Ethernet port

Power

Power Adapter Plug

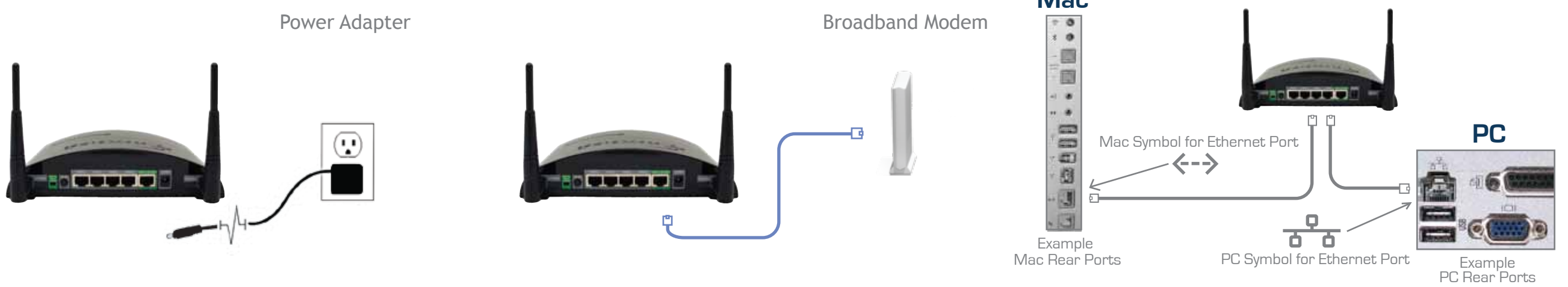


3 Connecting the Router (to a Mac or PC)

1.) Connect the A/C power adapter to an electrical source, and then connect it to the 'Power' socket of the router.

2.) Connect your Broadband Modem to the Router's "MODEM" port with an Ethernet cable. Reset your modem by unplugging it and plugging it back in.

3.) Connect your PC or Mac to any of the 4 LAN ports located on the back of the router.



4a Configuring the Router with a PC (for configuring with a Mac, see Step 4b)

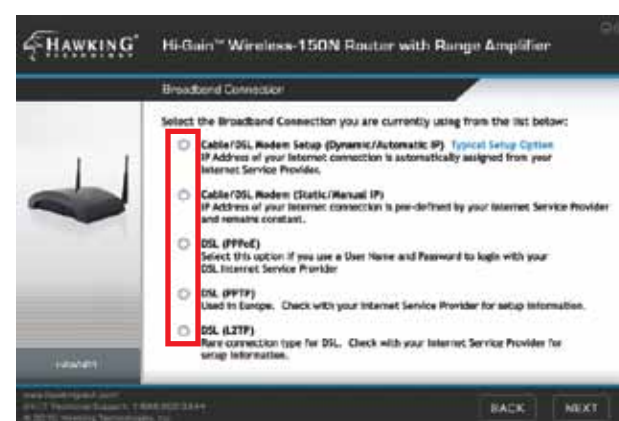
1.) Insert the Setup CD into the CD-ROM drive.



2.) When the auto-load page appears, click the Setup Wizard option on the right and follow the Setup directions.



3.) Scan for your router by clicking the 'Search' button. Once found, click the device to highlight it and click 'Next'.

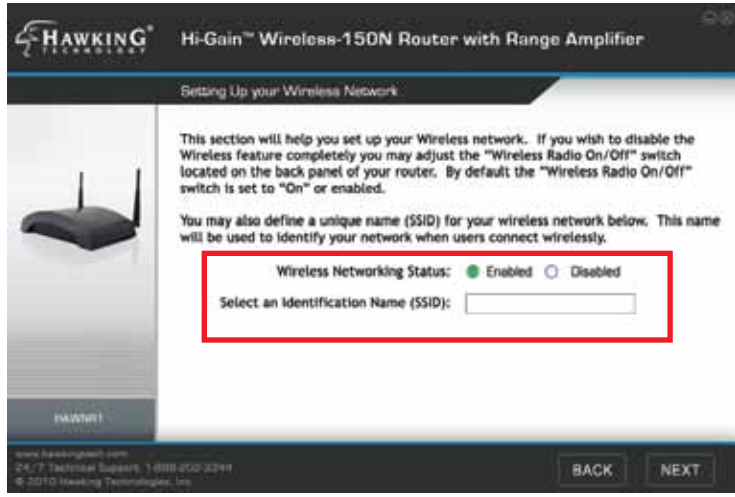


4.) Select your Internet Service Provider (ISP) from the list that appears. Then click 'Next'. Complete the information requested for your Internet type in the following pages.



5.) Here, you can adjust your LAN IP settings. It is recommended, however, that you DO NOT change your LAN IP. You may also change your password login (default: 1234) settings here.

4a Cont'd ▶▶▶



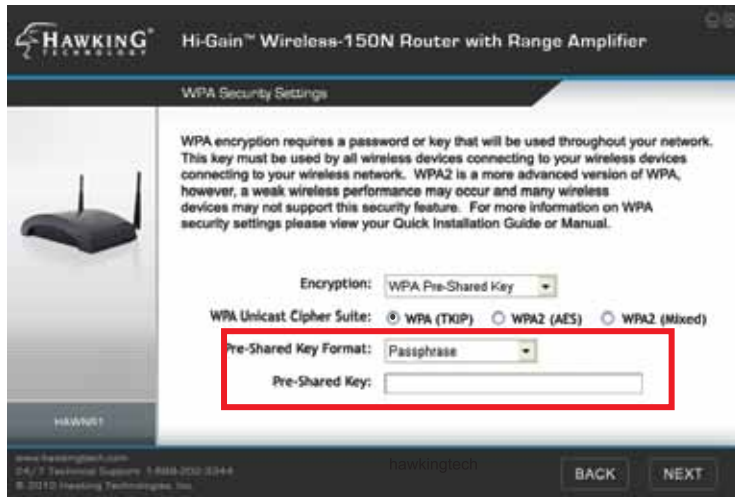
6.) Select Enable to activate your Wireless Network, or Disable to turn off your Wireless Network. Then, enter an identification name (default: Hawking_150N) for your router. Click 'Next' when you have completed the page.



7.) If you would like to add Wireless Security, choose your security type and click 'Next'. This guide will go over how to configure a basic security setup with a 'WPA pre-shared key' encryption.



8.) In the 'WPA' field select the option labeled as 'WPA (TKIP)'.



9.) In the 'Pre-shared Key Format' field, select 'Passphrase' from the drop down menu. Below that enter at least an 8 character value for the 'Pre-shared Key' (e.g. hawking2). Click 'Next' to complete your configuration.



10.) This page displays your Setup Summary of the router and shows all configured settings. Click the 'Set' button to apply these settings to the router. The router will take some time to reboot, please be patient.

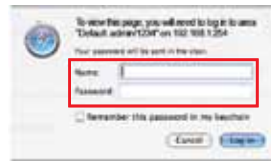
4b Configuring the Router with a Mac

1.) Insert the Setup CD into the computer's CD-ROM drive.



2.) When the auto-load page appears, click the Setup Wizard option on the right. Your web browser should automatically launch the router's web-based Quick Setup Wizard (URL address: <http://192.168.1.254>).

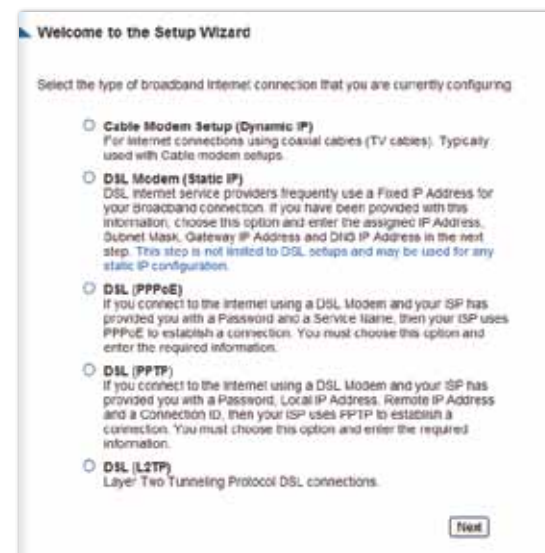
3.) When prompted by a pop-up window asking you to login, enter:
Name: admin
Password: 1234



4.) First, set the time zone in which you are using the router. After completion, click 'Next'.



5.) Choose the type of Internet connection provided to you by your Internet Service Provider. The following page will ask you to complete the configuration of your specific Internet connection. If you are unsure about some of the requirements, please contact your network administrator or ISP.



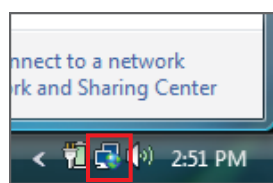
6.) After you have completed the setup of your Internet connection the wizard will prompt you to set up your local wireless network. Choose a name (SSID) for your network and create a password that will be used by all users connecting wirelessly to your network. Leave this field blank if you do not plan on using security.



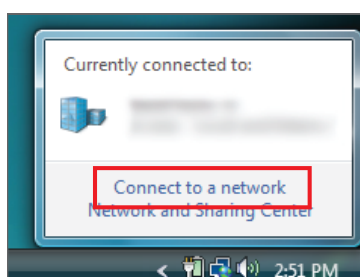
5 Connecting to your New Wireless Network (with a PC or Mac)

Connecting with a PC

1.) To connect to your new wireless network using a PC, click the 'Network and Sharing Center' icon in your system tray.



2.) Click the 'Connect to a network' link.



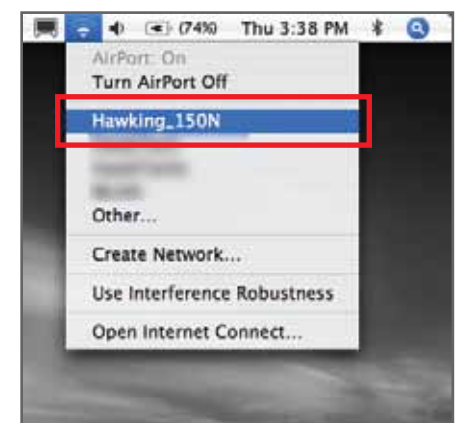
3.) Find your new network (default ID: Hawking_150N) and double click it, or select the network and click 'Connect'. You can now enjoy your new wireless network!



Connecting with a Mac

1.) Click the wireless network icon in the upper right hand corner of the Finder.

2.) From the drop-down menu select your wireless network (default ID: Hawking_150N). You can now enjoy your new wireless network!



NOTE: If you have WPA Security enabled you will be prompted to enter your password.