



# Intelligent Wireless Router

JHR-N805R

JHR-N825R

JHR-N916R

JHR-N926R

## Quick Installation Guide


VER: 0.0.1

## About this Guide

Thank you for choosing JCG Wireless Broadband Router. As a cost-effective product, this Intelligent Wireless Router provides dedicated solution for small office, home and dormitory. It integrates a variety of wireless applications, such as wireless bridge model, AP model etc. It provides a wide range of data security protection; support WEP, WPA, and WPS Encryption method. It is the best option of surfing on the wireless Internet and enjoying the fun of the wireless Internet and satisfies your need to watch high-definition video

The JCG Intelligent Wireless Router is easy to configure, even if you are not so familiar with the router. In order to better use all functions of this product, please read this guide carefully before you install the router,

### Trademark, copyright statement:

 **JCG** as a brand (trademark) is registered by Shenzhen Yichen Technology Development Co., Ltd. The copyright property of all the parts of the products, including accessories, software is owned by Shenzhen Yichen Technology Development Co., Ltd. Without permission, nobody shall be arbitrarily imitate, copy, or translate the products. The product specification and information in the manual are referred as a reference purposes only. May be its content will be updated without notice. Welcome to logon our website: <http://www.jcg.com.cn>

# Quick Installation Guide

You should configure the Router correctly to ensure the normal use of the Router. This chapter describes how to configure the basic functions of the Wireless Router. We will show the detailed configuration in the next chapter.

## 1 Configuring windows XP of the PC

### 1. Configure the IP address

Click the start menu, select **network connect**, show in figure 1-1

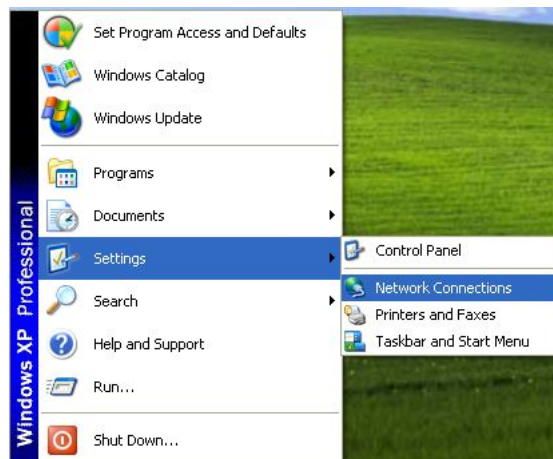


Figure 1- 1

Right-click the **local connection** as shown in figure 1-2.then select **Properties** will pop up figure 1-3  
shown in the Network connection properties dialog box.

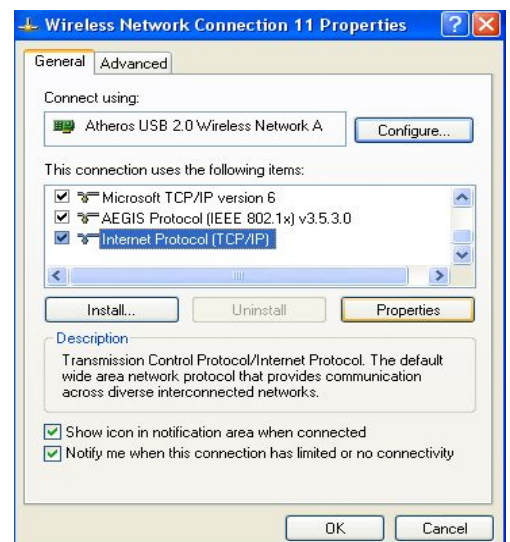
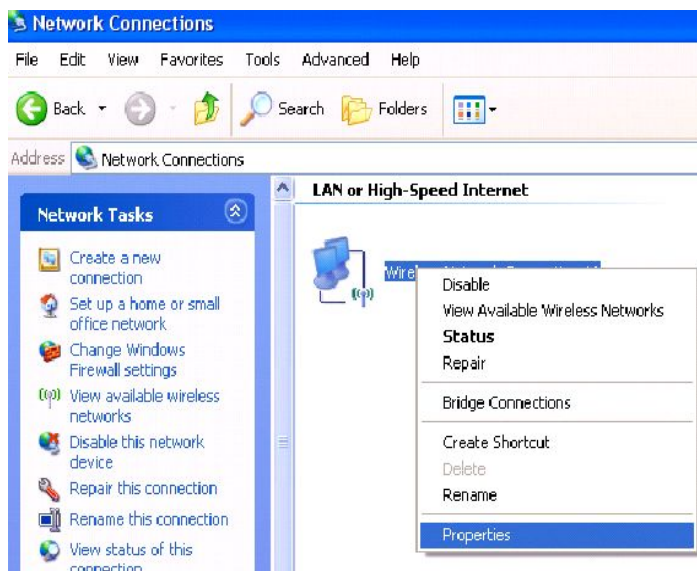


Figure 1- 2

Figure 1- 3

Double-click **Internet Protocol (TCP/IP)** will appear IP address page. If you choose to automatically receive the IP address and the DNS server address, the computer will be gain the IP address from the router (Show in figure 1-4).Of course, you can also choose manual-setting as shown in figure 1-5.

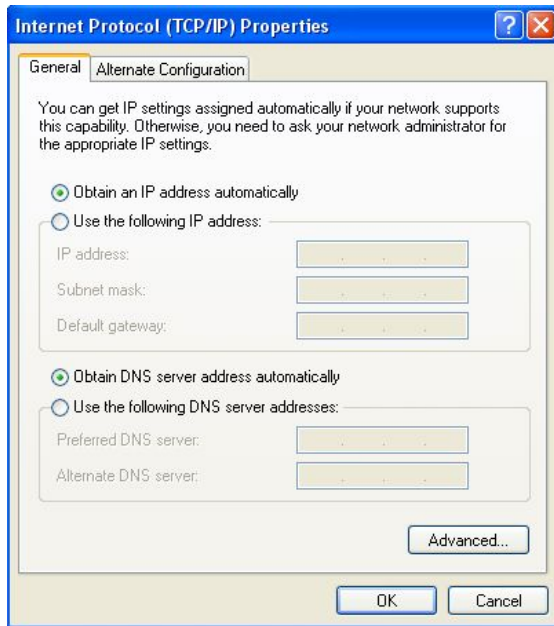


Figure 1- 4

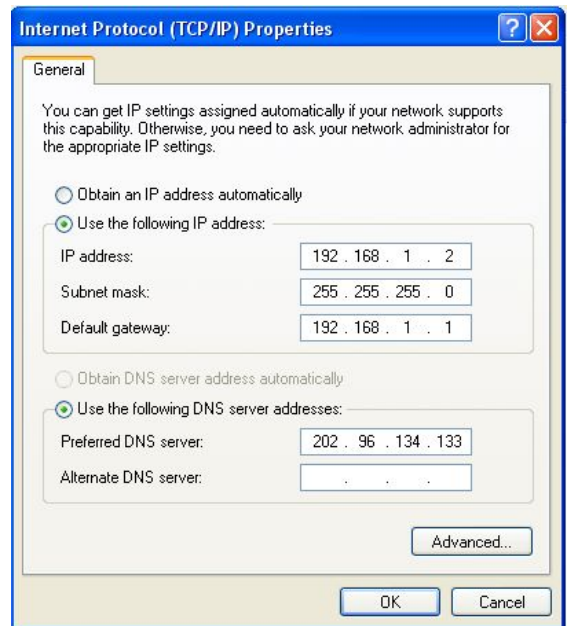


Figure 1- 5

## 2. Connect wireless network

The wireless network will be connected after finished configuring the network parameter. Select **View available wireless connection** as show in figure 1-2, your wireless network card will be in search of available network connection in current environment. Then the wireless network will be linked successfully by click link button.

If the network is encrypted, password dialog box will pop up prompting you to enter key. Wireless N Router default network name(SSID) is JCG, select this network to connect the wireless router(show in figure 1-6).

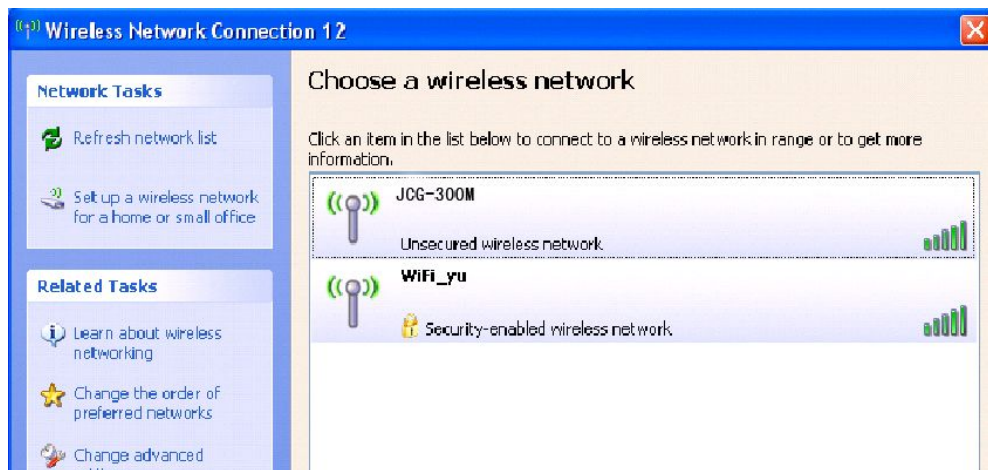


Figure 1- 6

Now, you can run the Ping command in the command prompt to verify the network connection between your PC and the router. If the result is similar to that show in figure 1-7, the connection between your PC and your router has been established.

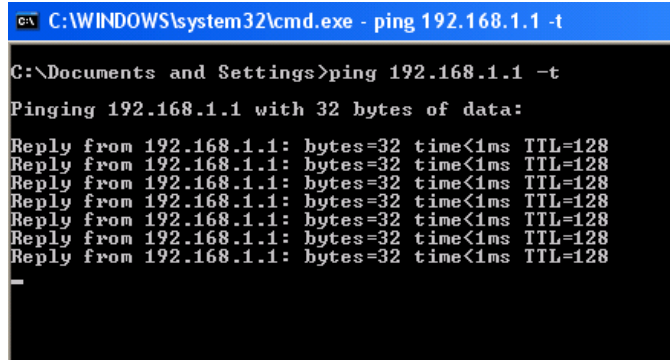


Figure 1- 7

If the link can not be established, please check the hardware connection between your PC and the router is normal, IP address is correct.

## 1.2 Quick Installation Guide

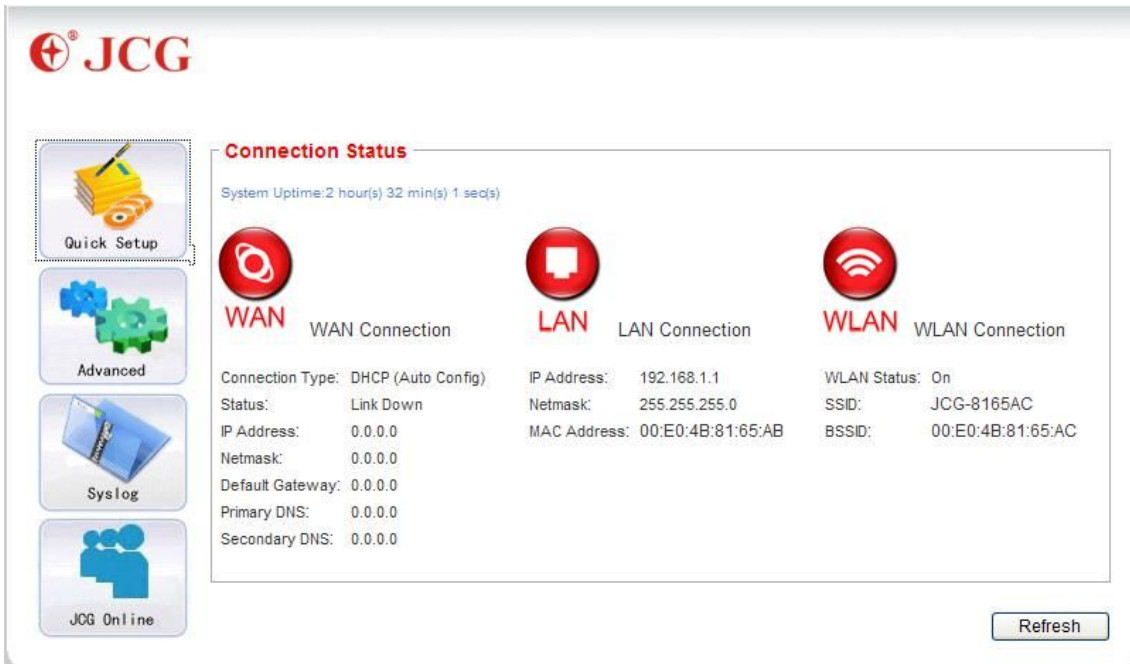
Launch a Web browser (Internet Explorer 5.0 or higher) when the computer and the 150M Wireless Router are correctly connected, close the proxy browser. Then input **http://192.168.1.1** into the browser address bar, press the Enter key, there will appear a login window as figure 1-8. Enter **admin** for the User Name and Password, both in lower case letters. Also you can modify the user name and the password to ensure the network security.



Figure 1- 8

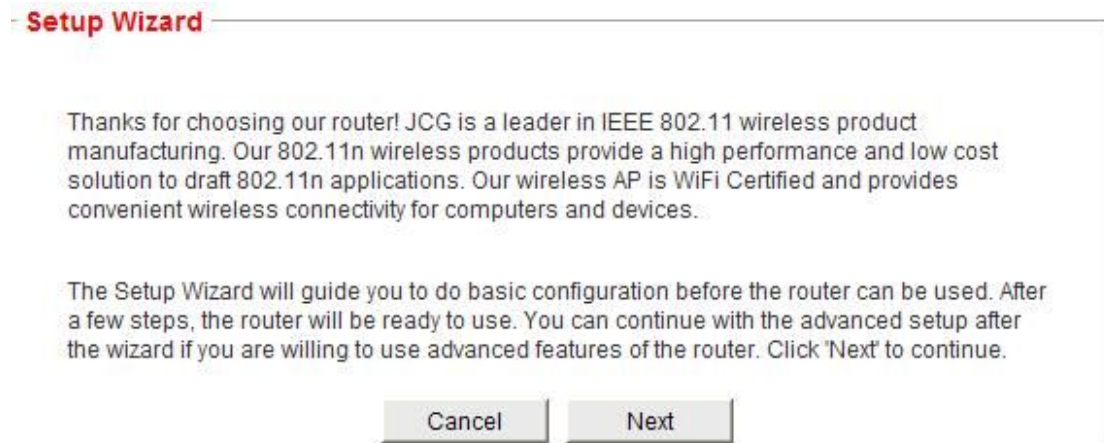
If the User Name and Password are correct, Router Management screen will appear, show in figure 1-9:

Figure 1- 9



Click on **Quick Setup** the button, show in figure 2-10 , the router supports five connection type to connect to Internet.

Figure 2-10



Click on the **Next** button, show in figure 1-11,  
If you use the **DHCP (Auto config)** connection, the router will receive the IP parameters from your ISP without needing to enter any parameter, show in figure 1-11

figure 1-11

## WAN Setup

WAN (Wide Area Network) allows you to choose different connection type that is suitable for your environment. And setup the parameters according to the connection type you've selected. Consult your network administrator or ISP if you are not sure about the connection type and responding parameters.

Connection Type	<input type="text" value="DHCP (Auto Config)"/>	<input type="button" value="Auto Detect"/>
Host Name (optional)	<input type="text" value="JCG-8165AA"/>	
<input type="button" value="Cancel"/> <input type="button" value="Back"/> <input type="button" value="Next"/>		

**Static (Fixed IP)** You need to setup the IP address, subnet mask and dns information, get them from your network administrator or ISP.

**DHCP (Auto Config)** DHCP server will assign the IP address and other parameters and the router will be connected automatically

**PPPoE (ADSL)** You can connect the router to ADSL modem, and router will use the username and password to connection.

- ② If you use the **STATIC(fixed IP)** connection, the Static IP settings page will appear, show in figure 1-12, enter the Static IP address, Subnet Mask, Default Gateway and DNS figure 1-12

## WAN Setup

WAN (Wide Area Network) allows you to choose different connection type that is suitable for your environment. And setup the parameters according to the connection type you've selected. Consult your network administrator or ISP if you are not sure about the connection type and responding parameters.

Connection Type	<input type="text" value="Static (Fixed IP)"/>	<input type="button" value="Auto Detect"/>
IP Address	<input type="text"/>	
Subnet Mask	<input type="text"/>	
Default Gateway	<input type="text"/>	
Primary DNS Server	<input type="text"/>	
Secondary DNS Server	<input type="text"/>	
<input type="button" value="Cancel"/> <input type="button" value="Back"/> <input type="button" value="Next"/>		

**Static (Fixed IP)** You need to setup the IP address, subnet mask and dns information, get them from your network administrator or ISP.

**DHCP (Auto Config)** DHCP server will assign the IP address and other parameters and the router will be connected automatically

**PPPoE (ADSL)** You can connect the router to ADSL modem, and router will use the username and password to connection.

③ If you use the **PPPoE(ADSL)** connection, the PPPoE settings page will appear, show in figure 1-13, please enter the user name and the password provided by your ISP.

**WAN Setup**

WAN (Wide Area Network) allows you to choose different connection type that is suitable for your environment. And setup the parameters according to the connection type you've selected. Consult your network administrator or ISP if you are not sure about the connection type and responding parameters.

Connection Type:

User Name:

Password:

Comfirm Password:

**Static (Fixed IP)** You need to setup the IP address, subnet mask and dns information, get them from your network administrator or ISP.

**DHCP (Auto Config)** DHCP server will assign the IP address and other parameters and the router will be connected automatically

**PPPoE (ADSL)** You can connect the router to ADSL modem, and router will use the username and password to connection.

Click on the **Next** button, show in figure 1-14. This page is used to configure the parameters for wireless LAN clients which may connect to your Access Point

figure 1-14

**Wireless Setup**

Wireless settings allows you to set SSID, radio working mode, and working channel etc. of the wireless network. Please go to 'Wireless Settings' after finish the wizard if you want to use advanced features of wireless network.

Radio On:  Off  On

Radio Mode:

SSID:

Hide SSID:  Disable  Enable

BSSID:

Channel:

**Radio On** Wireless network is controlled by the wireless radio, and it is not accessile if radio is set to off.

**Radio Mode** The radio can work in different modes, set the radio to the correct mode if you find it dose not compatible with your client.

**SSID** Service Set Identifier (SSID) is the identifier of the wireless network. It is displayed in the client's scanning list.

**Hide SSID** SSID can be set to hidden by the AP. In this case, the SSID will not be displayed in the scanning list of wireless clients, but you need to set the SSID manually for it.

**Channel** Wireless radio can work in a range of channels, try to change the channel if you find the radio is in great interference.

Click on **NEXT**, the button, show in figure 1-15



---

**Summary Information**

---

Summary information lists the settings you've done. Please confirm your settings before apply. Note: All of the settings will be discarded if you leave the wizard without applying.

WAN Connection Type	PPPoE (ADSL)
User Name	pppoe_user
Password	.....
Radio On/Off	On
Wireless Mode	11b/g/n Mixed
SSID	JCG-8165AC
Hide SSID	Disable
Channel	11

---

**Now, Quick Installation Guide is complete.**

## **FCC WARNING**

This device complies with Part 15 of the FCC Rules. Operation is subject to the following two conditions:

- (1) This device may not cause harmful interference, and
- (2) This device must accept any interference received, including interference that may cause undesired operation.

NOTE 1: This equipment has been tested and found to comply with the limits for a Class B digital device, pursuant to part 15 of the FCC Rules. These limits are designed to provide reasonable protection against harmful interference in a residential installation. This equipment generates uses and can radiate radio frequency energy and, if not installed and used in accordance with the instructions, may cause harmful interference to radio communications. However, there is no guarantee that interference will not occur in a particular installation. If this equipment does cause harmful interference to radio or television reception, which can be determined by turning the equipment off and on, the user is encouraged to try to correct the interference by one or more of the following measures:

- Reorient or relocate the receiving antenna.
- Increase the separation between the equipment and receiver.
- Connect the equipment into an outlet on a circuit different from that to which the receiver is connected.
- Consult the dealer or an experienced radio/TV technician for help.

NOTE 2: Any changes or modifications to this unit not expressly approved by the party responsible for compliance could void the user's authority to operate the equipment.

## **CE Mark Warning**

**CE0168** 

“Hereby, Shenzhen Yichen Technology Development Co., LTD declares that this Intelligent Wireless Router is in compliance with the essential requirements and other relevant provisions of Directive 1999/5/EC.”