

1 Connect the router to your modem

Connectez le routeur à votre modem Verbinden Sie den Router mit Ihrem Modem Verbind de router met het modem Συνδέστε το δρομολογητή στο μόντεμ σας

UK/FR/DE/NL/GR

A Power OFF

- Désactivez
- Ausschalten
- Uitschakelen
- Ανεργοποίηση

B

Line

C Power ON

- Activez
- Anschalten
- Inschakelen
- Ενεργοποίηση

Power ON

- Activez
- Anschalten
- Inschakelen
- Ενεργοποίηση

2 Make a connection to your PC

Établir une connexion à votre PC Stellen Sie eine Verbindung zum PC her Maak een verbinding met je PC Δημιουργία σύνδεσης με το PC σας

Option 1:

- Create a wireless network with OPS security (Hardware)
- Créer un réseau sans fil à l'OPS de sécurité (Hardware)
- Erstellen Sie ein drahtloses Netzwerk mit OPS Sicherheit (Hardware)
- Creer een draadloos netwerk met OPS beveiliging (Hardware)
- Δημιουργία ασύρματου δικτύου με ασφαλεία OPS (Hardware)

A For 2.4 GHz push 0-5 sec.

- Appuyez pendant 0-5 sec.
- 0-5 Sek. gedrückt halten
- Druk 0-5 sec.
- Πιέστε 0-5 δευτ.

For 5 GHz push 5-10 sec.

- Appuyez pendant 5-10 sec.
- 5-10 Sek. gedrückt halten
- Druk 5-10 sec.
- Πιέστε 5-10 δευτ.

B

Push 2 sec.

- Appuyez pendant 2 sec.
- 2 Sek. gedrückt halten
- Druk 2 sec.
- Πιέστε 2 δευτ.

C

Wait 2 min.

- Attendez 2 sec.
- 2 Min. warten
- Wacht 2 min.
- Περιμένετε 2 λεπτά

One push wireless setup

Option 2:

- Create a wireless network with OPS security (Software)
- Créer un réseau sans fil à l'OPS de sécurité (Software)
- Erstellen Sie ein drahtloses Netzwerk mit OPS Sicherheit (Software)
- Creer een draadloos netwerk met OPS beveiliging (Software)
- Δημιουργία ασύρματου δικτύου με ασφαλεία OPS (Software)

A For 2.4 GHz push 0-5 sec.

- Appuyez pendant 0-5 sec.
- 0-5 Sek. gedrückt halten
- Druk 0-5 sec.
- Πιέστε 0-5 δευτ.

For 5 GHz push 5-10 sec.

- Appuyez pendant 5-10 sec.
- 5-10 Sek. gedrückt halten
- Druk 5-10 sec.
- Πιέστε 5-10 δευτ.

B

- Double-cliquez sur
- Doppelklick
- Dubbelklikken
- Διπλό κλικ

C

- Cliquez sur
- Klick
- Klik
- Κλικ

D

- Cliquez sur
- Klick
- Klik
- Κλικ

E

Wait 2 min.

- Attendez 2 min.
- 2 min. warten
- Wacht 2 min.
- Περιμένετε 2 λεπτά

One push wireless setup

Option 3:

- Create a wireless network
- Créer un réseau sans fil
- Erstellen Sie ein drahtloses Netzwerk
- Creer een draadloos netwerk
- Δημιουργία ασύρματου δικτύου

A

- Double-cliquez sur
- Doppelklick
- Dubbelklikken
- Διπλό κλικ

B

- Double-cliquez sur
- Doppelklick
- Dubbelklikken
- Διπλό κλικ

C

- Double-cliquez sur
- Doppelklick
- Dubbelklikken
- Διπλό κλικ

D

- Cliquez sur
- Klick
- Klik
- Κλικ

OK = ok

Option 4:

- Create a wired network
- Créer un réseau filaire
- Erstellen Sie ein Kabelnetzwerk
- Creer een bedraad netwerk
- Δημιουργία ενσύρματου δικτύου

LAN

wireless gigabit
router 450N

Installation guide

- Guide d'installation
- Installationshandbuch
- Handleiding
- Οδηγός Εγκατάστασης

WLR-6000

3 Check your connection

Vérifiez votre connexion Überprüfen Sie Ihre Verbindung Controleer je verbinding Ελέγξτε τη σύνδεση

press Enter

<http://www.sitecomcloudsecurity.com>

click (optional)

Sitecom Cloud Security information card

- Facultative
- Optional
- Optioneel
- Προαιρετικό

'key code'

'security code'

Troubleshooting

- Dépannage
- Fehlerbehebung
- Problemen oplossen
- Αντιμετώπιση προβλημάτων

Finish enjoy surfing!

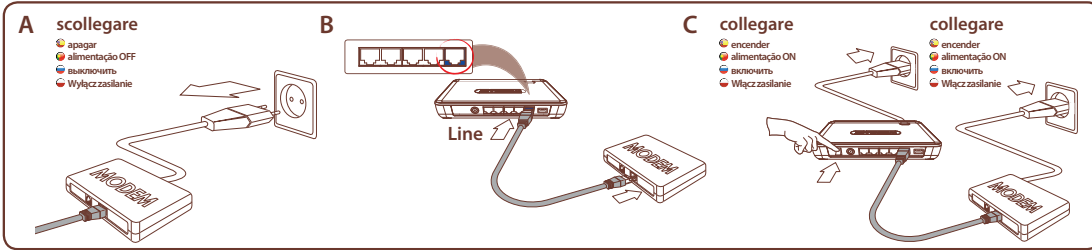
- Fini
- Fertig
- Klaar
- Τέλος

Bon surf!
Viel Spaß beim Surfen!
Veel internet plezier!
Απολαύστε σερφάρια!

www.sitecom.com

1 Collegare il router al modem

● Conecte el router a su módem ● Ligue o router ao seu módem ● Подключите маршрутизатор к модему ● Podłącz router do modemu



IT/ES/PO/RU/PL

wireless gigabit router 450N **SITECOM**

X6

Guida all'installazione

● Guia de instalação ● Guia de instalação
● Руководство по установке ● Instrukcja instalacji

WLR-6000

2 Creare una connessione con il PC

● Crear una conexión con su PC ● Faça uma ligação ao PC ● Установите соединение с компьютером здесь ● Podłącz do komputera

Opzione 1:

- Creare una rete wireless con sicurezza OPS (Hardware)
- Crear una red inalámbrica con seguridad OPS (Hardware)
- Criar uma rede sem fios com protecção OPS (Hardware)
- Создать беспроводную сеть с ОПС безопасности (Hardware)
- Utwórz sieć bezprzewodową z zabezpieczeniem OPS (Hardware)

A Per spingere 2.4 GHz 0-5 sec.

- Presione 0-5 seg.
- Prima 0-5 s.
- Наберите 0-5 секунды
- Naciśnij przez 0-5 sek.

Per spingere 5 GHz 5-10 sec.

- Presione 5-10 seg.
- Prima 5-10 s.
- Наберите 5-10 секунды
- Naciśnij przez 5-10 sek.

B

C

D

E

One push wireless setup

Attendere 2 min.

- Espere 2 min
- Aguarde 2 min.
- Подождите 2 мин
- Odczekaj 2 min

Opzione 2:

- Creare una rete wireless con sicurezza OPS (Software)
- Crear una red inalámbrica con seguridad OPS (Software)
- Criar uma rede sem fios com protecção OPS (Software)
- Создать беспроводную сеть с ОПС безопасности (Software)
- Utwórz sieć bezprzewodową z zabezpieczeniem OPS (Software)

A Per spingere 2.4 GHz 0-5 sec.

- Presione 0-5 seg.
- Prima 0-5 s.
- Наберите 0-5 секунды
- Naciśnij przez 0-5 sek.

Per spingere 5 GHz 5-10 sec.

- Presione 5-10 seg.
- Prima 5-10 s.
- Наберите 5-10 секунды
- Naciśnij przez 5-10 sek.

B

C

D

E

One push wireless setup

Attendere 2 min.

- Espere 2 min
- Aguarde 2 min.
- Подождите 2 мин
- Odczekaj 2 min

Opzione 3:

- Creare una rete wireless
- Crear una red inalámbrica
- Criar uma rede sem fios
- Создать беспроводную сеть
- Utwórz sieć bezprzewodową

A

B

C

D

Opzione 4:

- Creare una rete cablata
- Crear una red cableada
- Criar uma rede ligada por cabo
- Создание проводных сетей
- Utwórz sieć przewodową

3 Controlla la tua connessione

● Compruebe su conexión ● Verifique a sua ligação ● Проверьте подключение ● Sprawdź połączenie

Risoluzione dei problemi

● Resolución de problemas ● Resolução de problemas ● Устранение неполадок ● Rozwiązanie problemów

Fine Buona navigazione!

● Listo ● Divirta-se a navegar! ● Наслаждайтесь интернетом! ● Milego surfowania w sieci!

www.sitecom.com

Europe – EU Declaration of Conformity

This device complies with the essential requirements of the R&TTE Directive 1999/5/EC. The following test methods have been applied in order to prove presumption of conformity with the essential requirements of the R&TTE Directive 1999/5/EC:

- EN60950-1:2006+A11:2009+A1:2010
Safety of Information Technology Equipment
- EN50385: 2002
- Generic standard to demonstrate the compliance of electronic and electrical apparatus with the basic restrictions related to human exposure to electromagnetic fields (0 Hz - 300 GHz)
- EN 300 328 V1.7.1: 2006
- Electromagnetic compatibility and Radio spectrum Matters (ERM); Wideband Transmission systems; Data transmission equipment operating in the 2,4 GHz ISM band and using spread spectrum modulation techniques; Harmonized EN covering essential requirements under article 3.2 of the R&TTE Directive

EN 301 893 V1.5.1: 2008

Broadband Radio Access Networks (BRAN); 5 GHz high performance RLAN;
Harmonized EN covering essential requirements of article 3.2 of the R&TTE Directive

EN 301 489-1 V1.8.1: 2008


Electromagnetic compatibility and Radio Spectrum Matters (ERM); ElectroMagnetic Compatibility (EMC) standard for radio equipment and services; Part 1: Common technical requirements

- EN 301 489-17 V2.1.1: 2009
- Electromagnetic compatibility and Radio spectrum Matters (ERM); ElectroMagnetic Compatibility (EMC) standard for radio equipment and services; Part 17: Specific conditions for 2,4 GHz wideband transmission systems and 5 GHz high performance RLAN equipment

This device is a 5GHz wideband transmission system (transceiver), intended for use in all EU member states and EFTA countries, except in France and Italy where restrictive use applies.

In Italy the end-user should apply for a license at the national spectrum authorities in order to obtain authorization to use the device for setting up outdoor radio links and/or for supplying public access to telecommunications and/or network services.

This device may not be used for setting up outdoor radio links in France and in some areas the RF output power may be limited to 10 mW EIRP in the frequency range of 2454 – 2483.5 MHz. For detailed information the end-user should contact the national spectrum authority in France.

CE 0560 

[cs] Český [Czech]	[<i>Jméno výrobce</i>] tímto prohlašuje, že tento [<i>typ zařízení</i>] je ve shodě se základními požadavky a dalšími příslušnými ustanoveními směrnice 1999/5/ES.
[da] Dansk [Danish]	Undertegnede [<i>fabrikantens navn</i>] erklærer herved, at følgende udstyr [<i>udstyrets typebetegnelse</i>] overholder de væsentlige krav og øvrige relevante krav i direktiv 1999/5/EF.
[de] Deutsch [German]	Hiermit erkläre [<i>Name des Herstellers</i>], dass sich das Gerät [<i>Gerätetyp</i>] in Übereinstimmung mit den grundlegenden Anforderungen und den übrigen einschlägigen Bestimmungen der Richtlinie 1999/5/EG befindet.
[et] Eesti [Estonian]	Käesolevaga kinnitab [<i>tootja nimi = name of manufacturer</i>] seadme [<i>seadme tüüp = type of equipment</i>] vastavust direktiivi 1999/5/EÜ põhinõuetele ja nimetatud direktiivist tulenevatele teistele asjakohastele sätetele.
[en] English	Hereby, [<i>name of manufacturer</i>], declares that this [<i>type of equipment</i>] is in compliance with the essential requirements and other relevant provisions of Directive 1999/5/EC.
[es] Español [Spanish]	Por medio de la presente [<i>nombre del fabricante</i>] declara que el [<i>clase de equipo</i>] cumple con los requisitos esenciales y cualesquiera otras disposiciones aplicables o exigibles de la Directiva 1999/5/CE.
[el] Ελληνική [Greek]	ΜΕ ΤΗΝ ΠΑΡΟΥΣΑ [<i>name of manufacturer</i>] ΔΗΛΩΝΕΙ ΟΤΙ [<i>type of equipment</i>] ΣΥΜΜΟΡΦΩΝΕΤΑΙ ΠΡΟΣ ΤΙΣ ΟΥΣΙΩΔΕΙΣ ΑΠΑΙΤΗΣΕΙΣ ΚΑΙ ΤΙΣ ΛΟΙΠΕΣ ΣΧΕΤΙΚΕΣ ΔΙΑΤΑΞΕΙΣ ΤΗΣ ΟΔΗΓΙΑΣ 1999/5/ΕΚ.
[fr] Français [French]	Par la présente [<i>nom du fabricant</i>] déclare que l'appareil [<i>type d'appareil</i>] est conforme aux exigences essentielles et aux autres dispositions pertinentes de la directive 1999/5/CE.
[it] Italiano [Italian]	Con la presente [<i>nome del costruttore</i>] dichiara che questo [<i>tipo di apparecchio</i>] è conforme ai requisiti essenziali ed alle altre disposizioni pertinenti stabilite dalla direttiva 1999/5/CE.
Latviski [Latvian]	Ar šo [<i>name of manufacturer / izgatavotāja nosaukums</i>] deklarē, ka [<i>type of equipment / iekārtas tips</i>] atbilst Direktīvas 1999/5/EK būtiskajām prasībām un citiem ar to saistītajiem noteikumiem.
Lietuvių [Lithuanian]	Šiuo [<i>manufacturer name</i>] deklaruoją, kad šis [<i>equipment type</i>] atitinka esminius reikalavimus ir kitas 1999/5/EB Direktivos nuostatas.
[nl] Nederlands [Dutch]	Hierbij verklaart [<i>naam van de fabrikant</i>] dat het toestel [<i>type van toestel</i>] in overeenstemming is met de essentiële eisen en de andere relevante bepalingen van richtlijn 1999/5/EG.
[mt] Malti [Maltese]	Hawnhekk, [<i>isem tal-manifattur</i>], jiddikjara li dan [<i>il-mudell tal-prodott</i>] jikkonforma mal-ħtiġijiet essenzjali u ma provvedimenti oħrajn rilevanti li hemm fid-Dirrettiva 1999/5/EC.
[hu] Magyar [Hungarian]	Alulírott, [<i>gyártó neve</i>] nyilatkozom, hogy a [<i>... típus</i>] megfelel a vonatkozó alapvető követelményeknek és az 1999/5/EC irányelv egyéb előírásainak.
[pl] Polski [Polish]	Niniejszym [<i>nazwa producenta</i>] oświadczam, że [<i>nazwa wyrobu</i>] jest zgodny z zasadniczymi wymogami oraz pozostałymi stosownymi postanowieniami Dyrektywy 1999/5/EC.
[pt] Português [Portuguese]	[<i>Nome do fabricante</i>] declara que este [<i>tipo de equipamento</i>] está conforme com os requisitos essenciais e outras disposições da Directiva 1999/5/CE.
[sl] Slovensko [Slovenian]	[<i>Ime proizvajalca</i>] izjavlja, da je ta [<i>tip opreme</i>] v skladu z bistvenimi zahtevami in ostalimi relevantnimi določili direktive 1999/5/ES.
Slovenský [Slovak]	[<i>Meno výrobcu</i>] týmto vyhlasuje, že [<i>typ zariadenia</i>] spĺňa základné požiadavky a všetky príslušné ustanovenia Smernice 1999/5/ES.
[fi] Suomi [Finnish]	[<i>Valmistaja = manufacturer</i>] vakuuttaa täten että [<i>type of equipment = laitteen tyyppimerkintä</i>] tyyppinen laite on direktiivin 1999/5/EY oleellisten vaatimusten ja sitä koskevien direktiivin muiden ehtojen mukainen.
[sv] Svenska [Swedish]	Härmed intygar [<i>företag</i>] att denna [<i>utrustningstyp</i>] står i överensstämmelse med de väsentliga egenskapskrav och övriga relevanta bestämmelser som framgår av direktiv 1999/5/EG.

Federal Communication Commission Interference Statement

This equipment has been tested and found to comply with the limits for a Class B digital device, pursuant to Part 15 of the FCC Rules. These limits are designed to provide reasonable protection against harmful interference in a residential installation. This equipment generates, uses and can radiate radio frequency energy and, if not installed and used in accordance with the instructions, may cause harmful interference to radio communications. However, there is no guarantee that interference will not occur in a particular installation. If this equipment does cause harmful interference to radio or television reception, which can be determined by turning the equipment off and on, the user is encouraged to try to correct the interference by one of the following measures:

- Reorient or relocate the receiving antenna.
- Increase the separation between the equipment and receiver.
- Connect the equipment into an outlet on a circuit different from that to which the receiver is connected.
- Consult the dealer or an experienced radio/TV technician for help.

FCC Caution: Any changes or modifications not expressly approved by the party responsible for compliance could void the user's authority to operate this equipment.

For operation within 5.15 ~ 5.25GHz frequency range, it is restricted to indoor environment.

This device complies with Part 15 of the FCC Rules. Operation is subject to the following two conditions: (1) This device may not cause harmful interference, and (2) this device must accept any interference received, including interference that may cause undesired operation.

IMPORTANT NOTE:

Radiation Exposure Statement:

This equipment complies with FCC radiation exposure limits set forth for an uncontrolled environment. This equipment should be installed and operated with minimum distance 20cm between the radiator & your body.

This transmitter must not be co-located or operating in conjunction with any other antenna or transmitter.