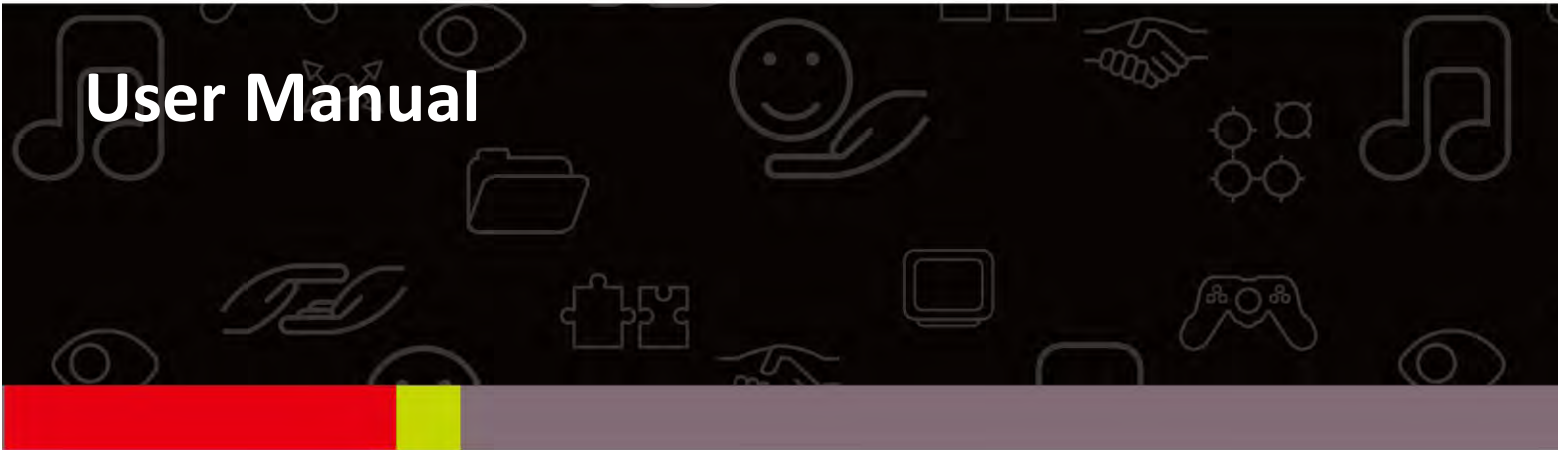




EW-7438RPn Air

User Manual



Product Information

I-1. Package Contents

- EW-7438RPn Air
- CD with multi-language QIG & user manual
- Quick installation guide (QIG)
- Access key card

I-2. System Requirements

- Wi-Fi extender/Wi-Fi bridge mode: Existing 2.4GHz wireless network
- Access point mode: Cable/DSL modem
- Computer with 2.4GHz 802.11/b/g/n Wi-Fi adapter, and web browser for software configuration (Internet Explorer 8[®] or above, Google Chrome[®], Firefox[®] or Safari[®] latest version)

I-3. Safety Information

In order to ensure the safe operation of the device and its users, please read and act in accordance with the following safety instructions.

1. The device is designed for indoor use only; do not place it outdoors.
2. Do not place the device in or near hot/humid places, such as a kitchen or bathroom.
3. Do not pull any connected cable with force; carefully disconnect it from the EW-7438RPn Air.
4. Handle the device with care. Accidental damage will void the warranty of the device.
5. The device contains small parts which are a danger to small children under 3 years old. Please keep the device out of reach of children.
6. Do not place the device on paper, cloth, or other flammable materials. The device may become hot during use.
7. There are no user-serviceable parts inside the device. If you experience problems with the device, please contact your dealer of purchase and ask for help.
8. The device is an electrical device and as such, if it becomes wet for any reason, do not attempt to touch it without switching the power supply off. Contact an experienced electrical technician for further help.
9. If you smell burning or see smoke coming from the EW-7438RPn Air then unplug the device immediately, as far as it is safely possible to do so. Call your dealer of purchase for help.
10. This product should work for a long time, and provide round-the-clock Wi-Fi service.

1. Installation

1. Plug the EW-7438RPn Air into a power socket and switch it on.
2. The **red** power LED will **flash** while the system is booting up. The device is ready when the red power LED displays **on**.
3. Use a Wi-Fi device (e.g. computer, tablet, smartphone) to search for a Wi-Fi network with the SSID “EdimaxEXT.Setup” and connect to it.



If you are using a computer, please disconnect any Ethernet cables. For mobile devices, iOS 4.3 or Android 4.x or above is required.



The last two characters of the SSID (EdimaxEXT.Setup**) will be unique numbers according to your device e.g.”EdimaxEXT.Setup c1”. Your unique SSID is displayed on the product label along with the included access key card.

Access Key	
Web Browser Access:	Wi-Fi Client Access:
http://edimax.setup or http://192.168.9.2	Initial Device Name (SSID): Edimax.Setup **
User Name: admin	Default Wi-Fi Extension SSID: *_2EX
Password: 1234	

Note: Please keep this card for future use.

4. Open a web browser and if you do not automatically arrive at the “Get Started” screen shown below, enter the URL ***http://edimaxext.setup*** and click “**Get Started**” to begin the setup process.




If you cannot access http://edimaxext.setup, please make sure your computer is set to use a dynamic IP address. For more information please refer to [VII-1. Configuring your IP address](#).

5. Select an operating mode for your EW-7438RPn Air and follow the on-screen instructions for your selected mode to complete setup. Refer to the appropriate chapter for more guidance on setup for each mode.

II-1. Wi-Fi Extender Mode

1. Select your Wi-Fi network from the list and enter the security key/password. You can also enter a new Wi-Fi network name (SSID) if you wish. Click “Next” to continue.

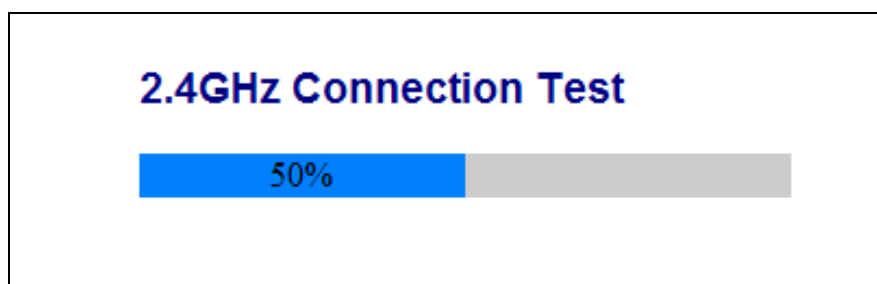
 **By default, the Wi-Fi extender’s new wireless network name (SSID) is your existing router/access point’s SSID + _2EX. For example if your router’s SSID is “Your SSID” then the EW-7438RPn Air ’s SSID will be “Your SSID_2EX”. You can change your extender’s new SSID in the “Extender Device SSID” field.**


<input type="radio"/>	EdimaxHQ	76%
<input checked="" type="radio"/>	OBM-AirPort-2.4G	76%
Security Key(your existing network security key)		*****
Extender device SSID		OBM-AirPort-2.4G_2EX
<input type="radio"/>	6428nS	52%

 **If the Wi-Fi network you wish to connect to does not appear, try clicking “Refresh”.**

 **Do not check “Connect to a hidden network” unless you wish to connect to a hidden SSID instead.**

2. Please wait while the EW-7438RPn Air tests the connection.



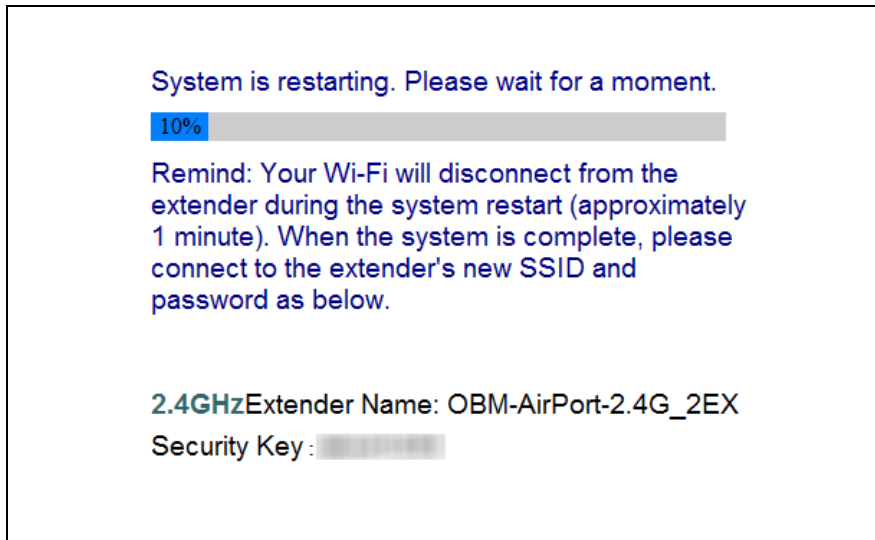
 **If your Wi-Fi extender cannot obtain an IP address (below) from your existing router/access point then click the “Static IP” button to assign an IP address to the extender. For more guidance please refer to the [VII-1. Configuring your IP address.](#)**



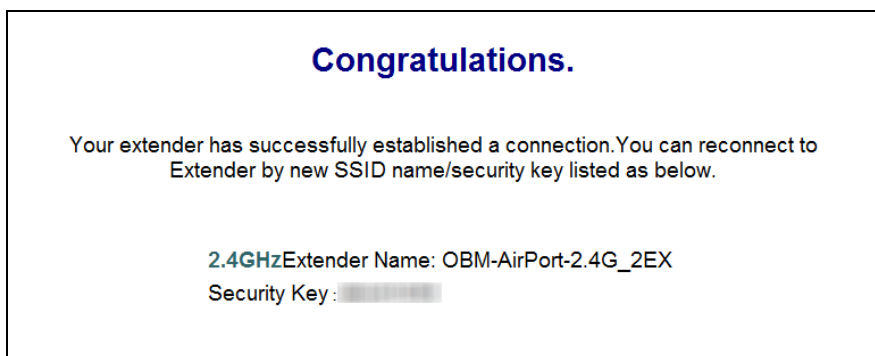
3. When the connection test is complete, click “Apply” to restart the extender.



4. Please wait a moment until the extender is ready.



- 5.** A final congratulations screen will indicate that setup is complete. The EW-7438RPn Air is working and ready for use - the **Blue** signal strength LED should display **on** or **flash** depending on your signal strength.



- 6.** Please close the browser window. You can now connect to the **extender's new SSID** on a wireless device within range such as a computer, smartphone or tablet. Do not connect to your router's SSID instead!



The password for your Wi-Fi extender's SSID is the same as for your router's SSID.

For more advanced configurations, use the browser based configuration interface (refer to [III. Browser Based Configuration Interface](#)).



II-4. WPS Setup

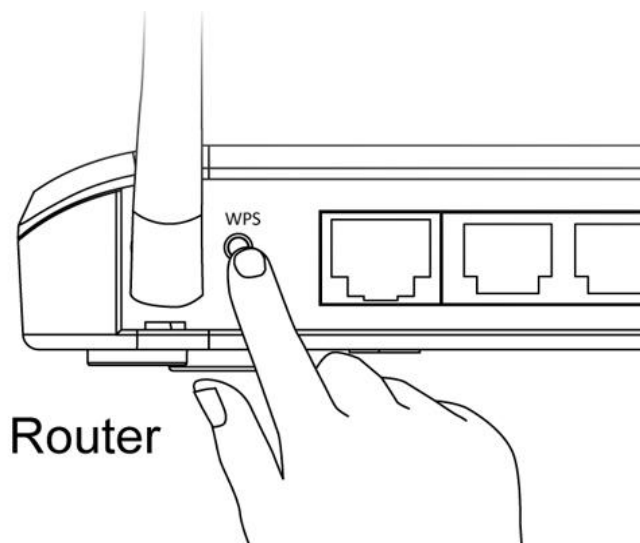
The WPS button is a quick and easy method to establish a secure connection between your EW-7438RPn Air and wireless router/access point.

If your wireless device supports WPS (Wi-Fi Protected Setup) then you can use this method to setup the EW-7438RPn Air in extender mode, instead of the setup wizard described in [II. Installation](#).

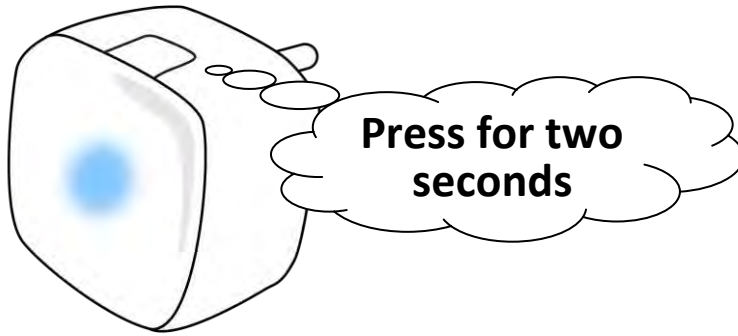
 ***Please do not hold the WPS button for too long – this may reset your device.***

- 1.** Press the WPS button on your **wireless router/access point** for the correct length of time to activate its WPS.

 ***Please check the instructions for your wireless device for how long you need to hold down its WPS button to activate WPS.***



- 2. Within two minutes**, press the WPS button on the EW-7438RPn Air for 2 – 5 seconds to activate WPS. The **green** WPS LED will **flash** to indicate that WPS is active.



- 3.** The devices will establish a connection. The **green** WPS LED on the EW-7438RPn Air will display **on** for 30 second then reboot device once.
- 4.** After WPS connection is sucessful, you can see the **Blue** signal strength LED should display **on** or **flash** depending on your signal strength.

II-5. Reset to Factory Default Settings

If you experience problems with your extender or if you want to change the extender to a different operating mode, you can reset the device back to its factory settings. This resets **all** settings back to default.

- 1.** Press and hold the WPS/Reset button for at least 10 seconds until the **red** power LED is **flashing**.
- 2.** Wait for the extender to restart. The extender is ready for setup when the **red** power LED displays **on**.

II. Browser Based Configuration Interface

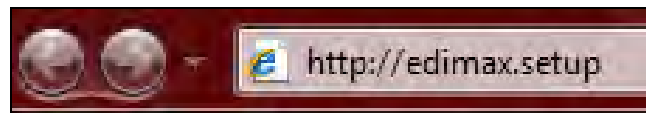
After you have setup the EW-7438RPn Air as detailed in [II. Installation](#) or the included **Quick Installation Guide**, you can use the browser based configuration interface to configure advanced settings.



Please ensure that your computer is set to use a dynamic IP address. Refer to [VII-1. Configuring your IP address](#) for more information.

III-1. Login

1. To access the browser based configuration interface enter ***http://edimax.setup*** into the URL bar of a browser on a network device connected to the same Wi-Fi network as the EW-7438RPn Air.



2. You will be prompted for a username and password. The default username is “admin” and the default password is “1234”.



3. You will arrive at the “Status and Information” screen. Use the menu down the left side to navigate.

EDIMAX
NETWORKING PEOPLE TOGETHER

English

- Home
- IQ Setup
- WPS Settings
- Advanced Settings

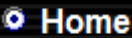
Status and Information


You can check the device's MAC address, runtime code, hardware version, and network status below.

System	
Uptime	0Day:0h:3m:10s
Hardware Version	Rev. v2
Firmware version	1.02
	<input type="button" value="Upgrade Firmware"/>
Mode	Universal Repeater
Wireless Configuration	
ESSID	OBM-AirPort-2.4G_2EX
Channel Number	5
Security	WPA-Shared Key
BSSID (MAC)	00:E0:4C:81:96:C9
Associated Clients	1 <input type="button" value="Show Active Clients"/>
Status	Connected
Signal Strength	<div style="width: 80%; background-color: blue; height: 10px;"></div> 80%
LAN Configuration	
IP Address	192.168.77.117
Subnet Mask	255.255.255.0
Default Gateway	
MAC Address	00:E0:4C:81:96:C9

III. Extender Mode

IV-1. Home

 The “Status” page displays basic system information about the device, arranged into three categories: system, wireless configuration & LAN configuration.

 **Screenshots displayed are examples. The information shown on your screen will vary depending on your configuration.**

System	
Uptime	0Day:0h:3m:10s
Hardware Version	Rev. v2
Firmware version	1.02 <input type="button" value="Upgrade Firmware"/>
Mode	Universal Repeater
Wireless Configuration	
ESSID	OBM-AirPort-2.4G_2EX
Channel Number	5
Security	WPA-Shared Key
BSSID (MAC)	00:E0:4C:81:96:C9
Associated Clients	1 <input type="button" value="Show Active Clients"/>
Status	Connected
Signal Strength	<div style="width: 80%; background-color: blue; height: 10px;"></div> 80%
LAN Configuration	
IP Address	192.168.77.117
Subnet Mask	255.255.255.0
Default Gateway	
MAC Address	00:E0:4C:81:96:C9

Uptime	Displays the total time since the device was turned on.
---------------	---

Hardware Version	Displays the hardware version.
Firmware Version	Displays the firmware version.
Mode	Displays the operating mode.
ESSID	Displays the EW-7438RPn Air's ESSID, sometimes also known as SSID. The ESSID/SSID is the name used to identify a wireless network.
Channel Number	Displays the current wireless channel number.
Security	Displays the current wireless security setting.
BSSID (MAC)	Displays the device's BSSID. The BSSID identifies the EW-7438RPn Air in the network, and is the same as the device's MAC address.
Associated Clients	Displays the number of clients connected to the EW-7438RPn Air. Click "Show Active Clients" to display a new window showing information about wireless clients.
Status	Displays the current connection status of the EW-7438RPn Air.
Signal Strength	Displays the signal strength for the specified Wi-Fi network.
IP Address	Displays the IP address of this device.
Subnet Mask	Displays the subnet mask of the IP address.
Default Gateway	Displays the IP address of the default gateway.
MAC address	Displays the device's MAC address. The MAC address is a unique, fixed ID for this device, it cannot be modified.

IV-2. iQ Setup

iQ Setup

You can run the setup wizard again to reconfigure the basic settings of the device. Please refer to [II-1. Wi-Fi Extender Mode Step 2](#) onwards for guidance.



If you wish to change the operating mode, please reset the EW-7438RPn Air back to factory default settings.

IV-3. WPS Settings

WPS Setting

Wi-Fi Protected Setup is a simple way to establish connections between WPS compatible devices. When WPS is activated in the correct manner and at the correct time for two compatible devices, they will automatically connect. PIN code WPS includes the use of a PIN code between the two devices for verification.

The WPS Settings page displays settings for WPS between your extender and a **wireless client**. For WPS Setup between your extender and **router/access point**, please use the WPS button as described in [II-4. WPS Setup](#).

• 2.4G Wi-Fi Protected Setup Information

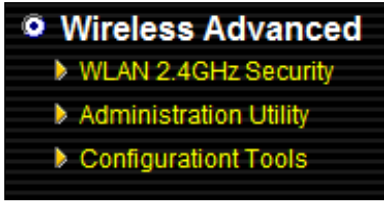
WPS Status	Configured
Self PinCode	35611530

• Device Configure

Configuration Mode Device is as an AP	Registrar
Configure via Push Button	<input type="button" value="Start PBC"/>
Input Client PIN Code	<input type="text"/> <input type="button" value="Send PIN"/>

WPS Status	Displays “Configured” or “unConfigured” depending on whether WPS and SSID/security settings for the device have been configured or not, either manually or using the WPS button.
Self PIN Code	Displays the WPS PIN code of the device.
Configuration Mode	The configuration mode of the device’s WPS setting is displayed here. “Registrar” means the device acts as an access point for a wireless client to connect to and the wireless client(s) will follow the device’s wireless settings.
Configure via Push Button	Click “Start PBC” (Push-Button Configuration) to activate WPS on the access point. WPS will be active for 2 minutes.
Input Client PIN Code	Enter the wireless client’s PIN code here and click “Start PIN” to activate PIN code WPS. Refer to your wireless client’s documentation if you are unsure of its PIN code.

IV-4. Wireless Advanced



In “Wireless Advanced” you adjust the power output and LED operation of the EW-7438RPn Air. The submenu also allows you to configure security, as well as various administrative and management functions.



This product should work for a long time, and provide round-the-clock Wi-Fi service.

Advanced functions of the extender can be configured below.

Tx Power	100 % ▾
----------	---------

- Enable LED Off Mode**
- Turn off all LED indicators
 - Turn off all LED indicators except the power LED

Tx Power	You can adjust the level of wireless output power as a percentage. Depending on the size of your location and required coverage, you may not require 100% output power. Reducing the output power can enhance security since your Wi-Fi signal will not extend to potential malicious/unknown users in distant areas.
Enable LED Off Mode	Check this box to enable “LED Off Mode” which allows you to select “Turn off all LED indicators” or “Turn off all LED indicators except the power LED” accordingly.

IV-4-1. WLAN 2.4GHz Security

Broadcast SSID	<input checked="" type="radio"/> Enable <input type="radio"/> Disable
Device SSID	<input type="text" value="EdimaxHQ_2EX"/>
Security Type	Open Security

Broadcast SSID	Enable or disable ESSID broadcast. When enabled, the ESSID will be visible to clients as an available Wi-Fi network. When disabled, the ESSID will not be visible as an available Wi-Fi network to clients – clients must manually enter the ESSID in order to connect. A hidden (disabled) ESSID is typically more secure than a visible (enabled) SSID. WPS (Wi-Fi Protected Setup) is also disabled when SSID broadcast is disabled.
Device SSID	This is the name of your Wi-Fi network for identification, also sometimes referred to as “SSID”. The SSID can consist of any combination of up to 32 alphanumeric characters.
Security Type	The security/encryption type of your EW-7438RPn Air’s wireless network is displayed here. The security/encryption type is the same as your existing router/access point.

IV-4-2. Administration Utility

You can change the password used to login to the browser-based configuration interface here. It is advised to do so for security purposes. You can also configure the EW-7438RPn Air's IP address.



Please make a note of the new password. In the event that you forget the password and are unable to login to the browser based configuration interface, see [II-5. Reset to factory default settings](#) for how to reset the device.

• Password Settings

Current Password	<input type="text"/>
New Password	<input type="text"/>
Re-Enter Password	<input type="text"/>

• 2.4GHZ.

<input checked="" type="radio"/> Obtain an IP address automatically
<input type="radio"/> Use the following IP address

Current Password	Enter your current password.
New Password	Enter your new password.
Confirmed Password	Confirm your new password.

IP Address	Specify an IP address here. This IP address will be assigned to your EW-7438RPn Air.
Subnet Mask	Input the subnet mask of the new IP address.
Gateway Address	Input the network's gateway IP address.

IV-4-3. Configuration Tools

The “Configuration Tools” menu allows you to backup the EW-7438RPn Air’s settings, restore the settings to a previous version or restore the EW-7438RPn Air back to its factory default state. You can also upgrade the firmware, reboot the device and export the system log.

Manage Settings

Save the current settings of the device to a .bin file, restore the settings of the device to a previously saved .bin file or reset the device to its factory default settings.

Backup Settings :

Restore Settings :

Restore to Factory Defaults :

Backup Settings	Click “Save” to save the current settings on your computer as config.bin file.
Restore Settings	Click “Browse” to find a previously saved config.bin file and then click “Upload” to replace your current settings.
Restore to Factory Default	Click “Reset” to restore settings to the factory default. A pop-up window will appear and ask you to confirm and enter your log in details. Enter your username and password and click “Ok”. See below for more information.

Upgrade Firmware

You can upgrade the system firmware to a more recent version. You can download the latest firmware from the Edimax website. After the upgrade, the system will restart.

Upgrade Firmware

Upgrade the firmware to the most recent version - it is recommended that you use a wired connection for the procedure.



Do not switch off or disconnect the device during a firmware upgrade, as this could damage the device. It is recommended that you use a computer for a firmware upgrade.

Browse	Open a new window to locate and select the firmware file in your computer.
---------------	--

Reboot

In the event that the router malfunctions or is not responding, then it is recommended that you restart the device.

Reboot

In the event that the device malfunctions or is not responding, you can perform a system reboot. Click on Apply - this will reboot the device, without affecting your existing settings.

APPLY



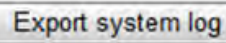
Rebooting the EW-7438RPn Air will not affect the current configuration/settings of the device.

Apply	Click "Apply" to reboot the device. A status bar will indicate the progress of the reboot and you will see a confirmation screen when the reboot is complete.
--------------	---

System Log

You can export the system log to a separate file if you require.

System Log

A rectangular button with a light gray background and a thin black border. The text "Export system log" is centered on the button in a dark gray font.

Export system log	Click to open a new window and select a location to save the log file.
--------------------------	--

IV. Appendix

VII-1. Configuring your IP address

For first time access to the URL ***http://EdimaxEXT.Setup*** please ensure your computer is set to use a dynamic IP address. This means your computer can obtain an IP address automatically from a DHCP server. You can check if your computer is set to use a dynamic IP address by following [VII-1-1. How to check that your computer uses a dynamic IP address.](#)

Static IP users can also temporarily modify your computer's IP address to be in the same IP address subnet e.g. **192.168.9.x (x = 3 – 254)** as the EW-7438RPn Air in order to access ***http://Edimax.Setup***.



The EW-7438RPn Air's default IP address is 192.168.9.2.

The procedure for modifying your IP address varies across different operating systems; please follow the guide appropriate for your operating system in [IV-1-2. How to modify the IP address of your computer.](#)



Static IP users please make a note of your static IP before you change it.

You can assign a new IP address to the device which is within the subnet of your network during setup or using the browser based configuration interface, so that you can access the URL ***http://EdimaxEXT.Setup*** in future without modifying your IP address.



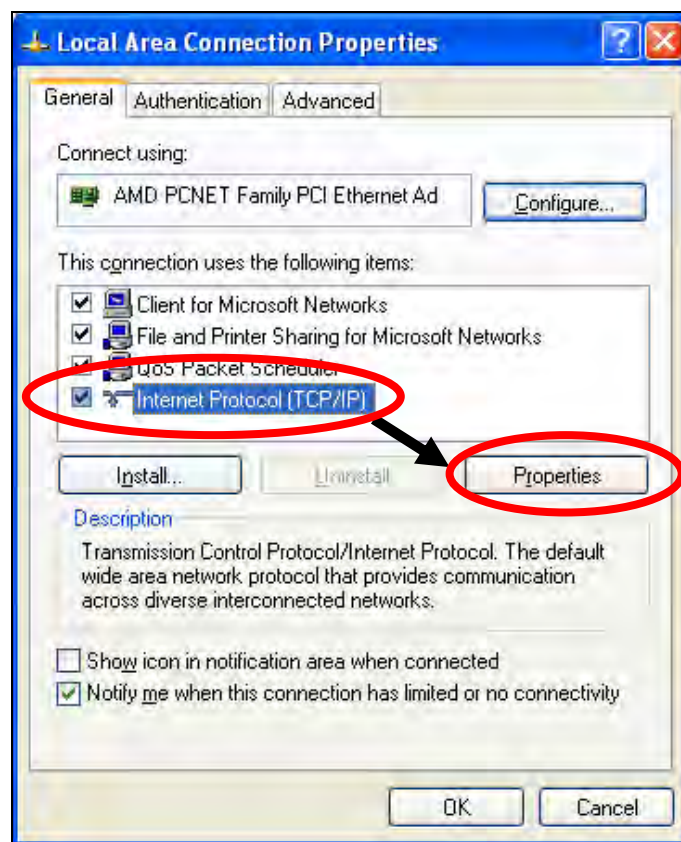
Please remember to change your IP address back to its original value after the device is properly configured.

VII-1-1. How to check that your computer uses a dynamic IP address

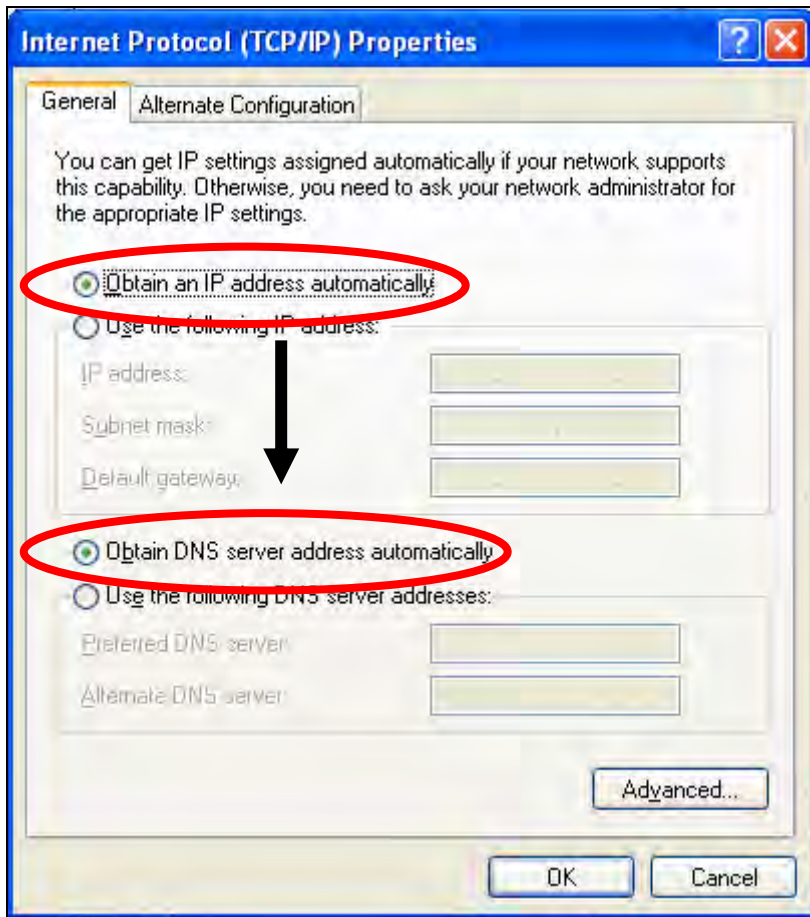
Please follow the instructions appropriate for your operating system.

VII-1-1-1. Windows XP

1. Click the “Start” button (it should be located in the lower-left corner of your computer), then click “Control Panel”. Double-click the “Network and Internet Connections” icon, click “Network Connections”, and then double-click “Local Area Connection”. The “Local Area Connection Status” window will then appear, click “Properties”.

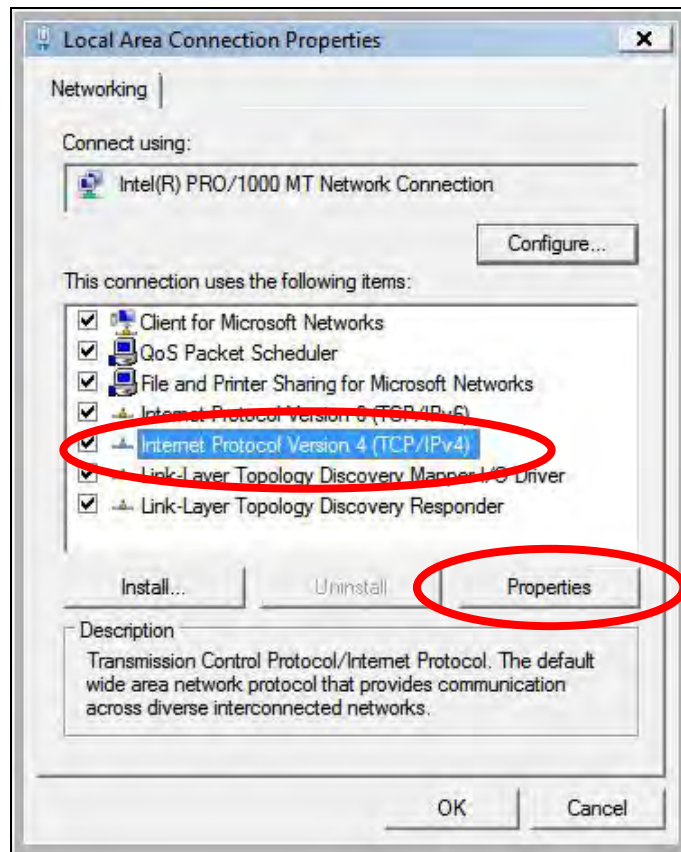


2. “Obtain an IP address automatically” and “Obtain DNS server address automatically” should be selected.

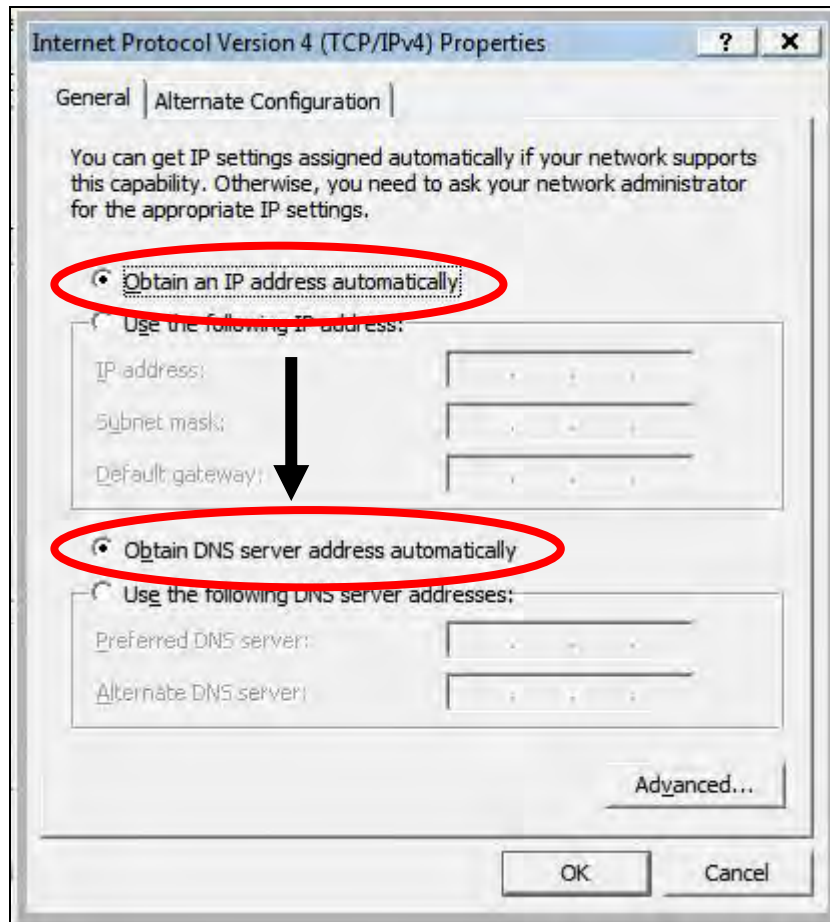


VII-1-1-2. Windows Vista

1. Click the “Start” button (it should be located in the lower-left corner of your computer), then click “Control Panel”. Click “View Network Status and Tasks”, then click “Manage Network Connections”. Right-click “Local Area Network”, then select “Properties”. The “Local Area Connection Properties” window will then appear, select “Internet Protocol Version 4 (TCP / IPv4)”, and then click “Properties”.

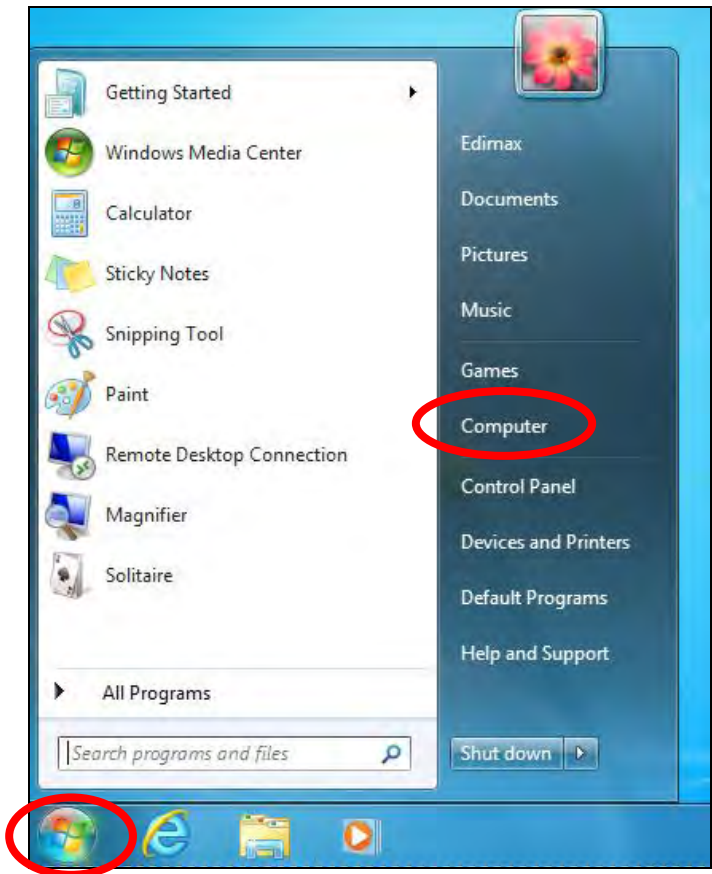


2. Select “Obtain an IP address automatically” and “Obtain DNS server address automatically” should be selected.

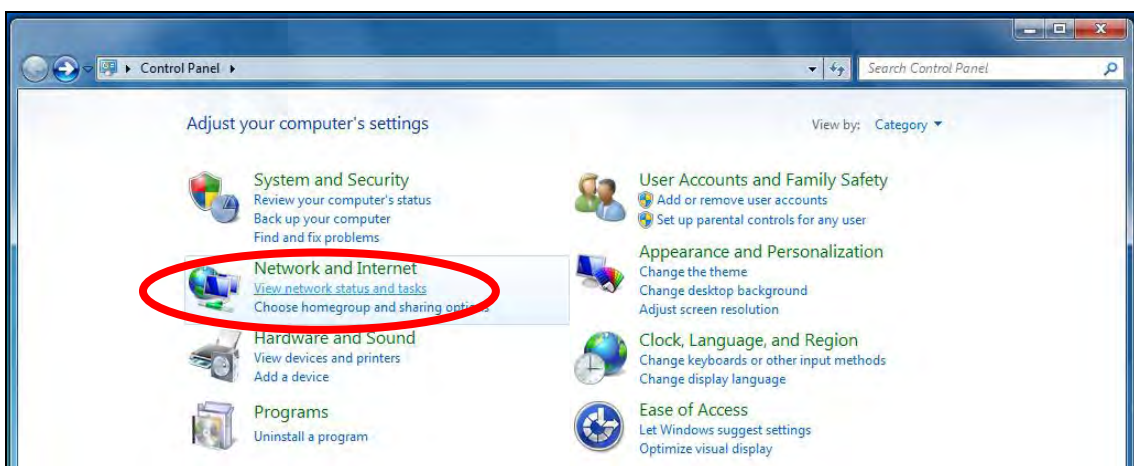


VII-1-1-3. Windows 7

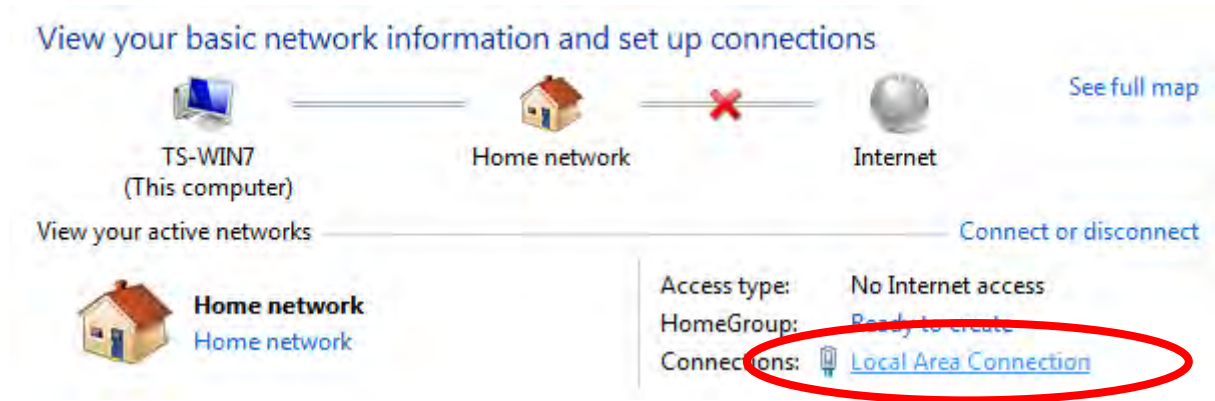
1. Click the “Start” button (it should be located in the lower-left corner of your computer), then click “Control Panel”.



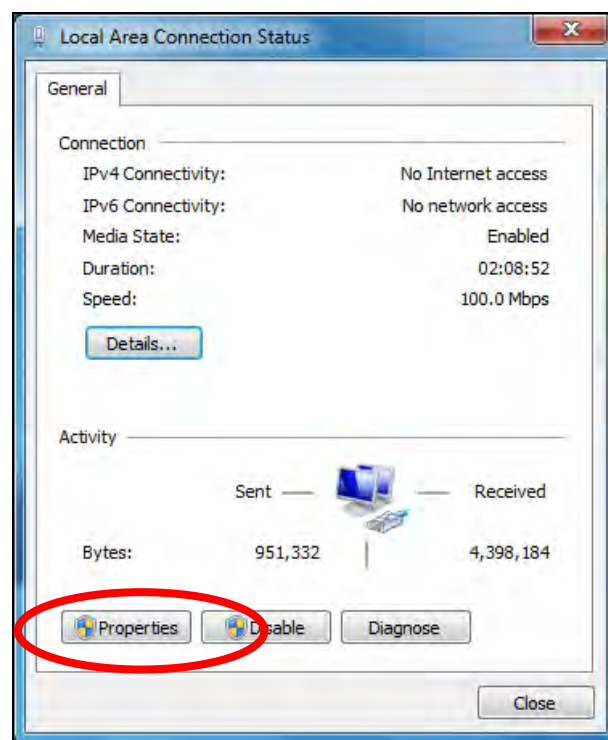
2. Under “Network and Internet” click “View network status and tasks”.



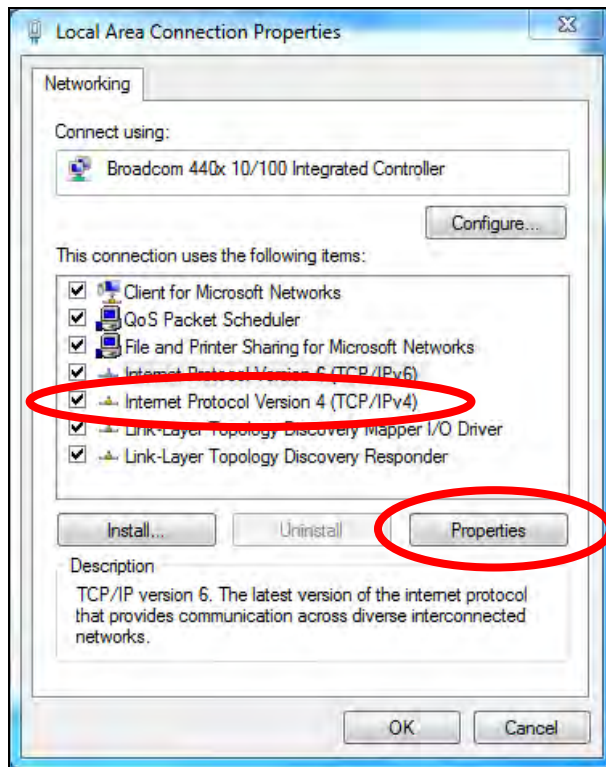
3. Click “Local Area Connection”.



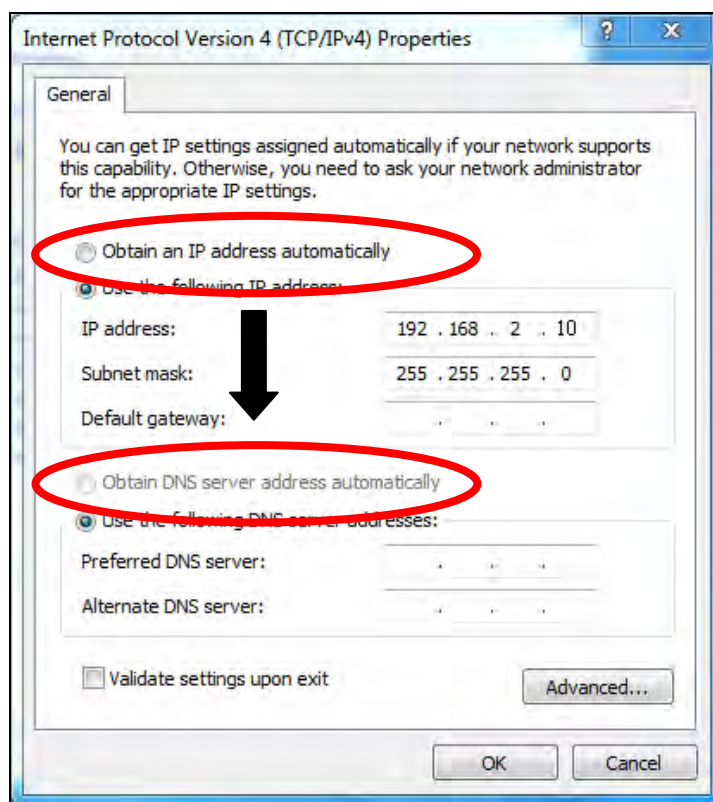
4. Click “Properties”.



5. Select “Internet Protocol Version 4 (TCP/IPv4) and then click “Properties”.

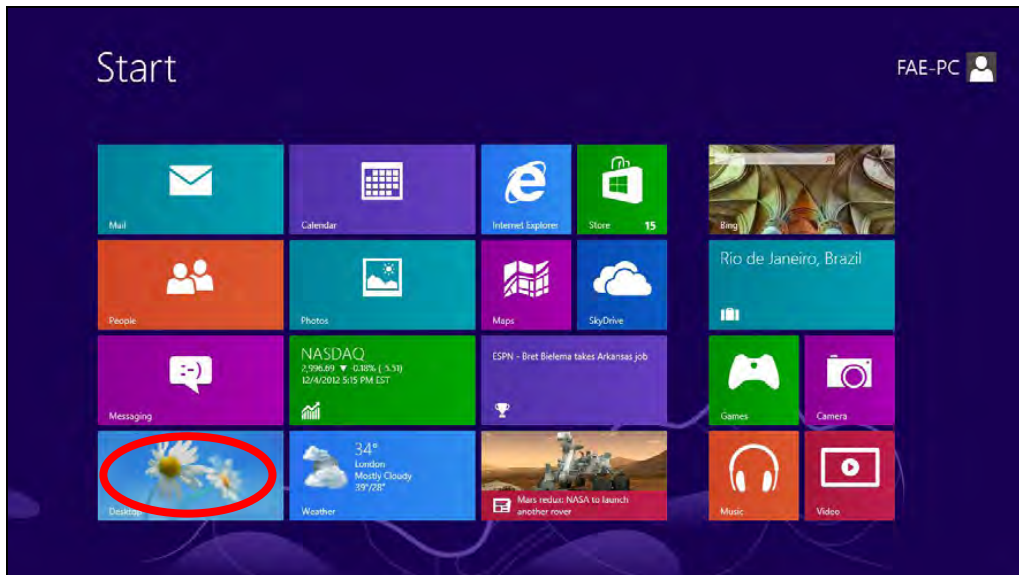


6. Select “Obtain an IP address automatically” and “Obtain DNS server address automatically” should be selected.

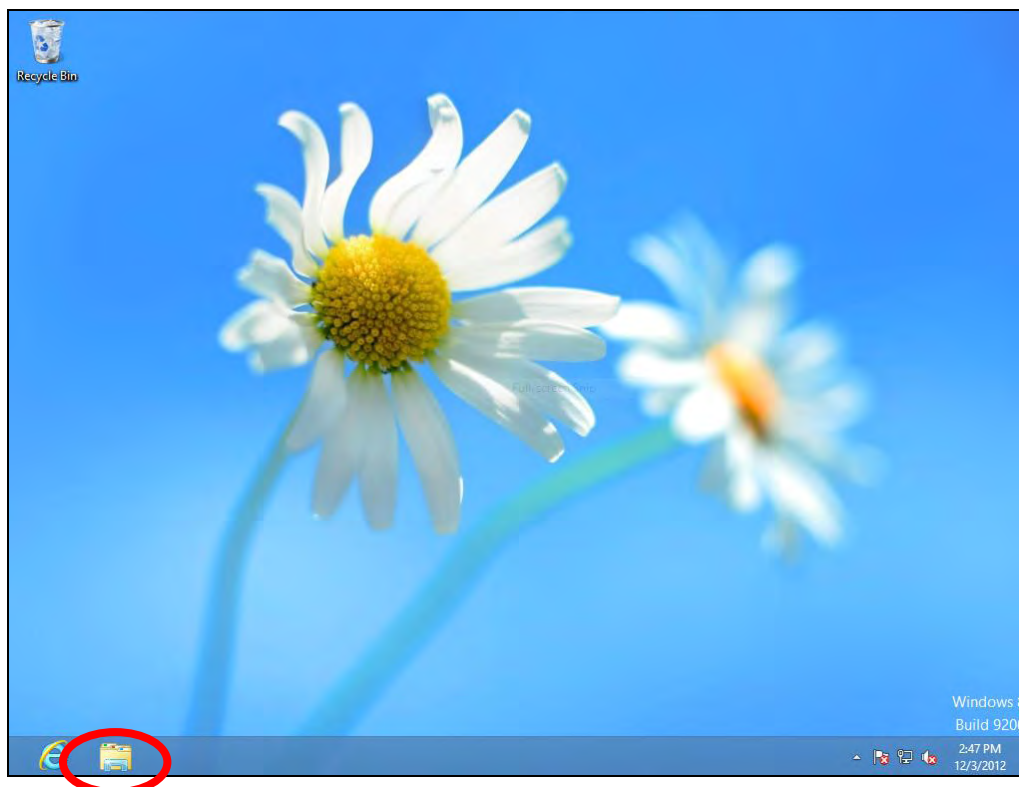


VII-1-1-4. Windows 8

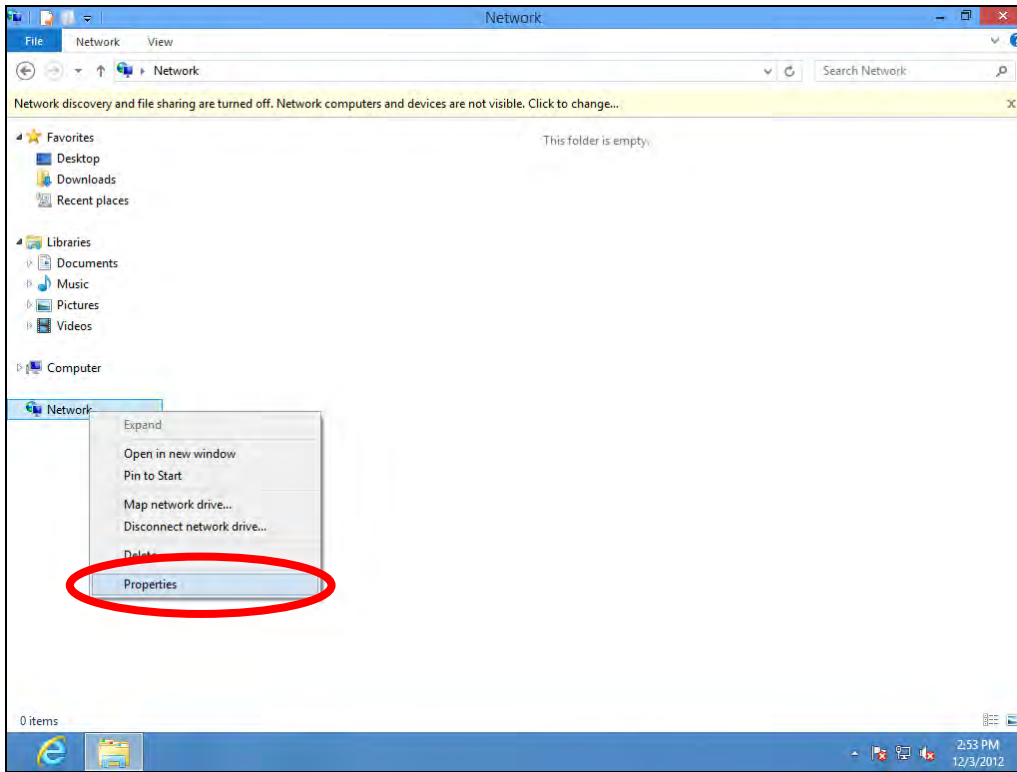
1. From the Windows 8 Start screen, you need to switch to desktop mode. Move your cursor to the bottom left of the screen and click.



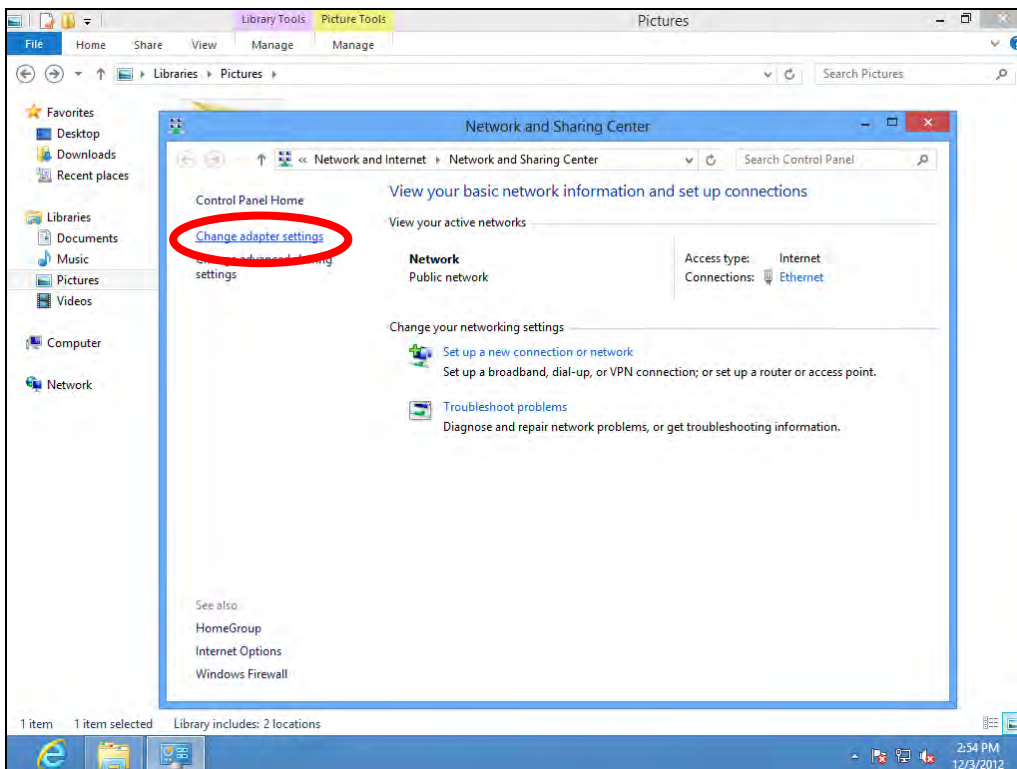
2. In desktop mode, click the File Explorer icon in the bottom left of the screen, as shown below.



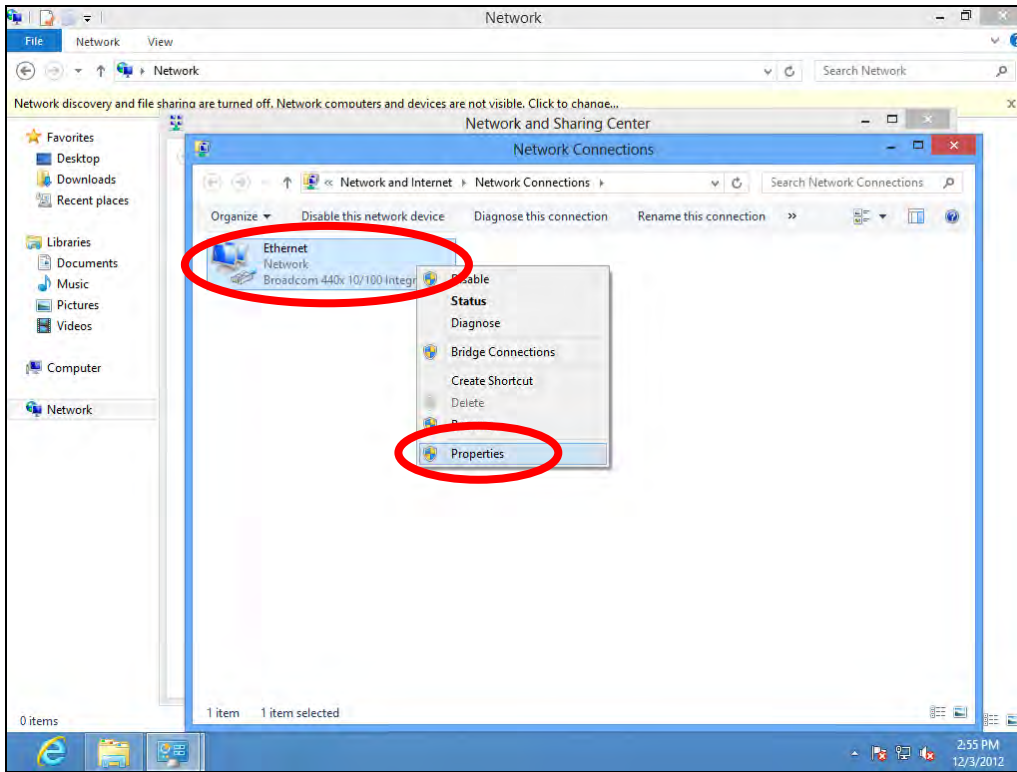
3. Right click "Network" and then select "Properties".



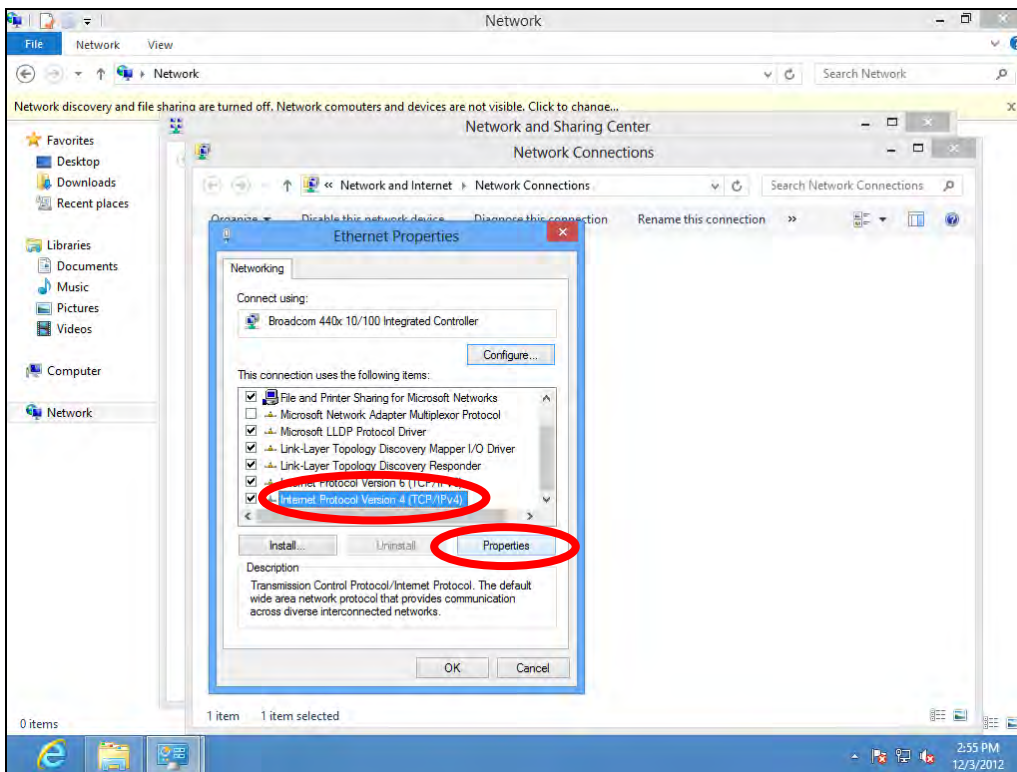
4. In the window that opens, select “Change adapter settings” from the left side.



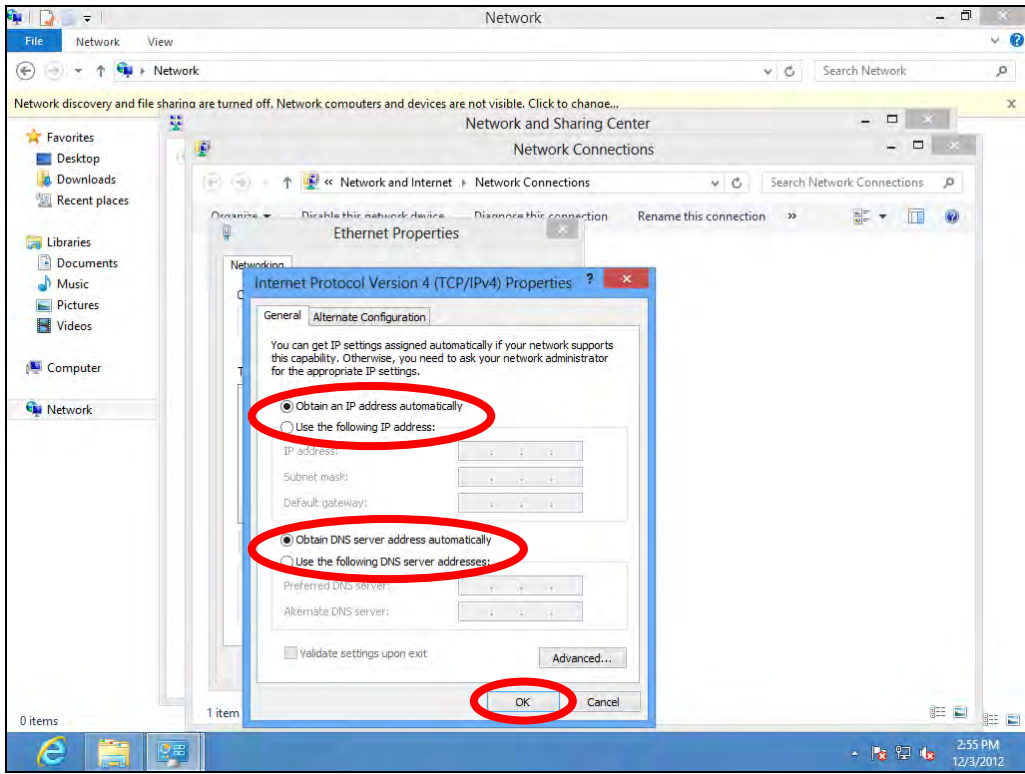
5. Choose your connection and right click, then select “Properties”.



6. Select “Internet Protocol Version 4 (TCP/IPv4) and then click “Properties”.

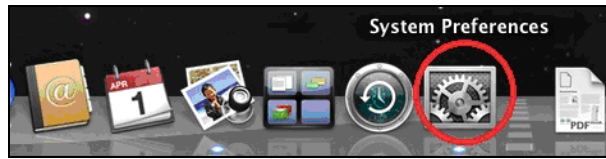


7. Select “Obtain an IP address automatically” and “Obtain DNS server address automatically” should be selected.



VII-1-1-5. Mac OS

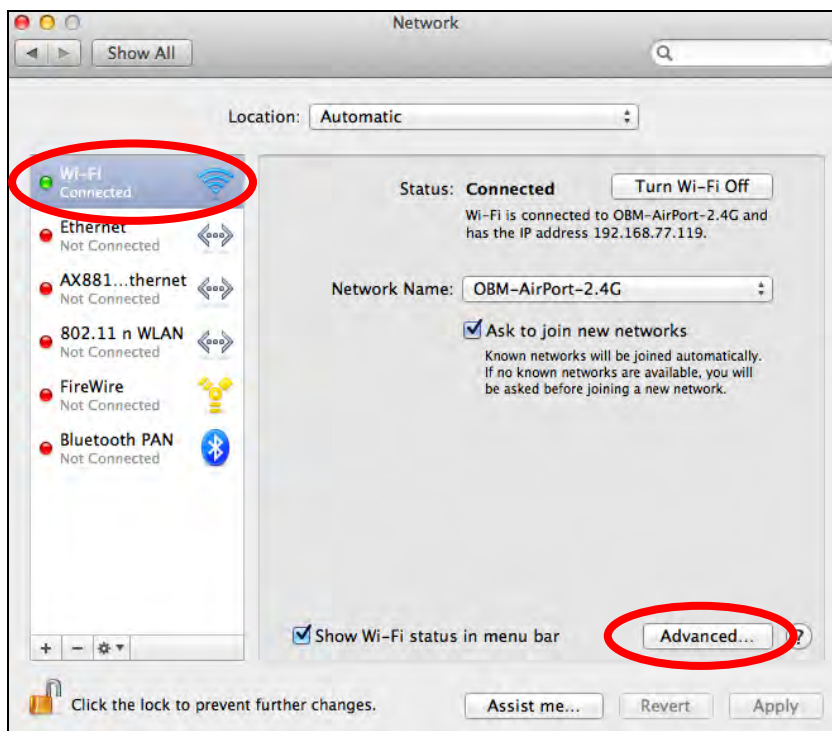
1. Have your Macintosh computer operate as usual, and click on “System Preferences”.



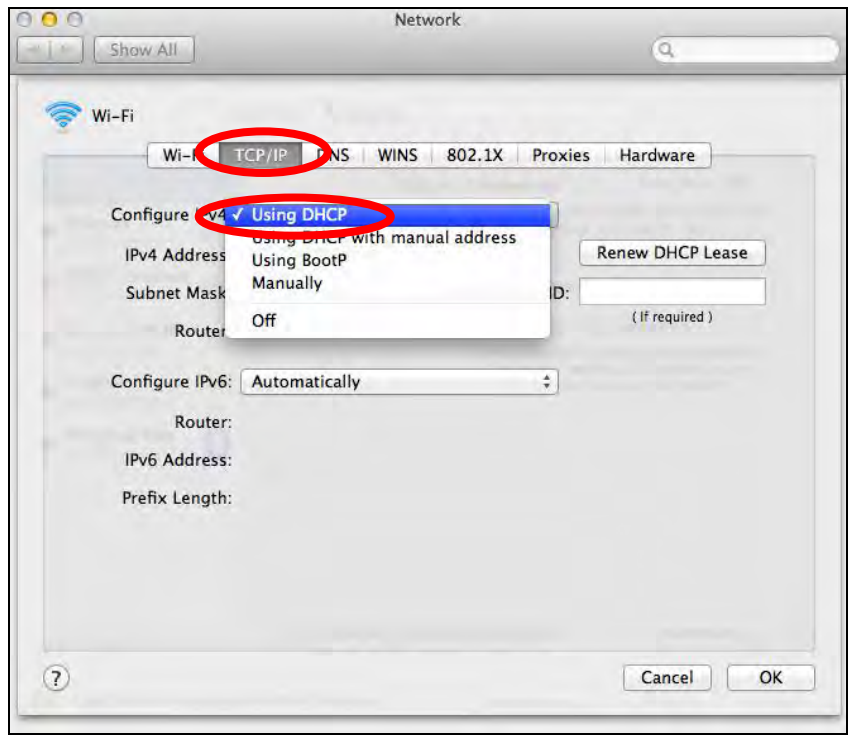
2. In System Preferences, click on “Network”.



3. Click on “Wi-Fi” in the left panel and then click “Advanced” in the lower right corner.



4. Select “TCP/IP” from the top menu and “Using DHCP” in the drop down menu labeled “Configure IPv4” should be selected.



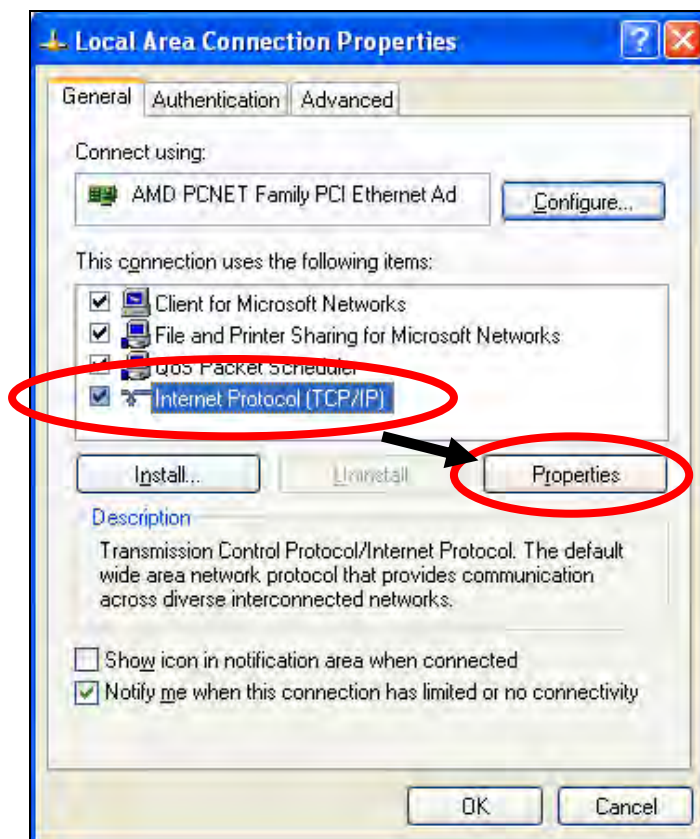
VII-1-2. How to modify the IP address of your computer

Please follow the instructions appropriate for your operating system. In the following examples we use the IP address **192.168.9.20** though you can use any IP address in the range **192.168.9.x (x = 3 – 254)** in order to access iQ Setup/browser based configuration interface.

 **Please make a note of your static IP before you change it.**

VII-1-2-1. Windows XP

1. Click the “Start” button (it should be located in the lower-left corner of your computer), then click “Control Panel”. Double-click the “Network and Internet Connections” icon, click “Network Connections”, and then double-click “Local Area Connection”. The “Local Area Connection Status” window will then appear, click “Properties”.



2. Select “Use the following IP address”, then input the following values:

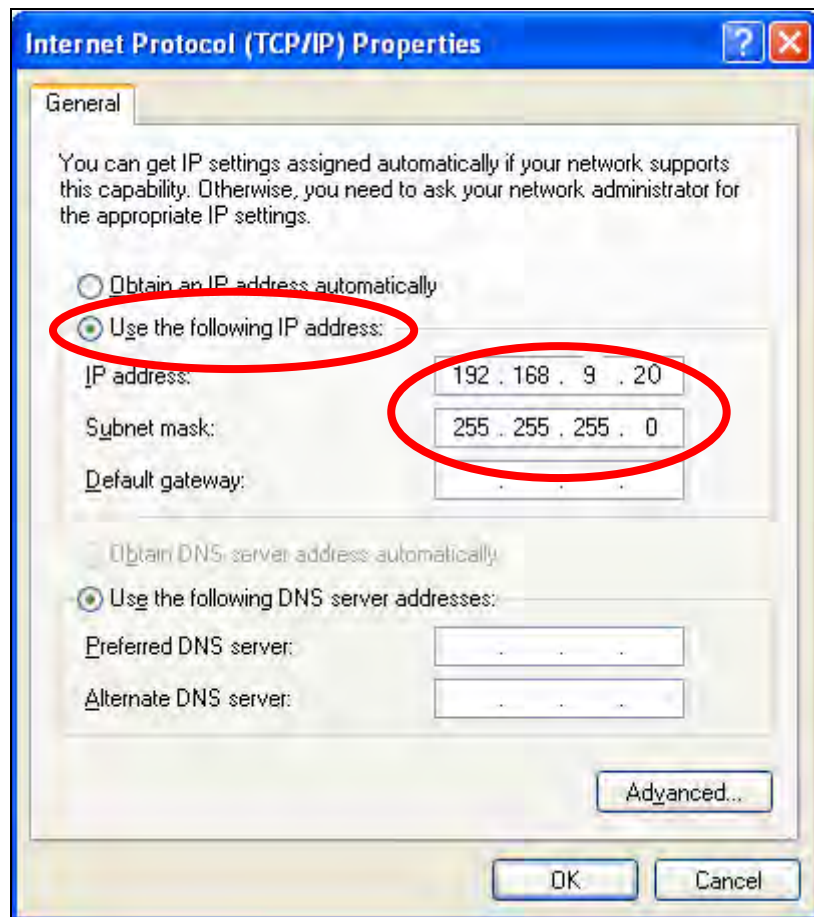
 **Your existing static IP address will be displayed in the “IP address” field before you replace it. Please make a note of this IP**

address, subnet mask, default gateway and DNS server addresses.

IP address: 192.168.9.20

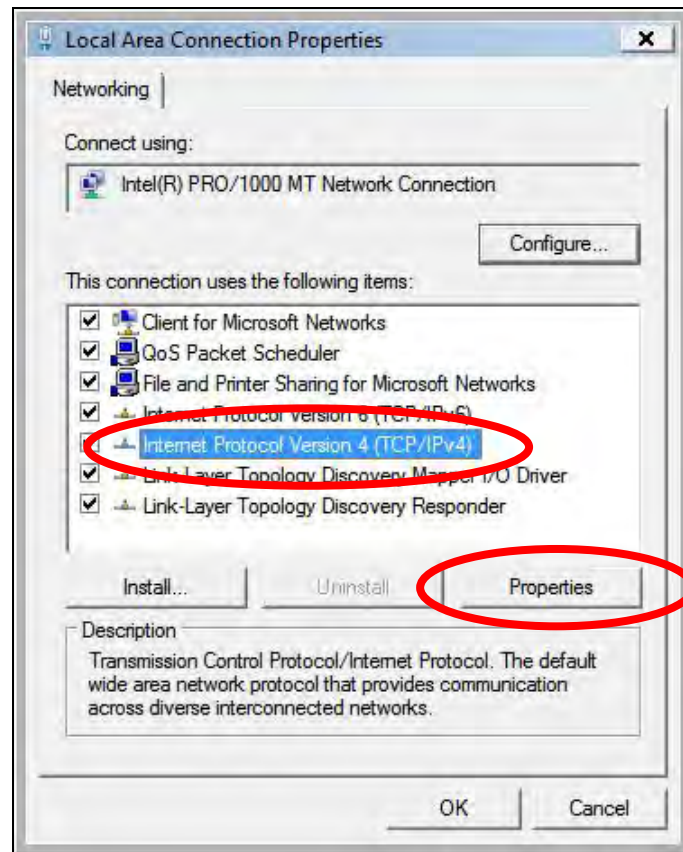
Subnet Mask: 255.255.255.0

Click 'OK' when finished.



VII-1-2-2. Windows Vista

1. Click the “Start” button (it should be located in the lower-left corner of your computer), then click “Control Panel”. Click “View Network Status and Tasks”, then click “Manage Network Connections”. Right-click “Local Area Network”, then select “Properties”. The “Local Area Connection Properties” window will then appear, select “Internet Protocol Version 4 (TCP / IPv4)”, and then click “Properties”.



2. Select “Use the following IP address”, then input the following values:

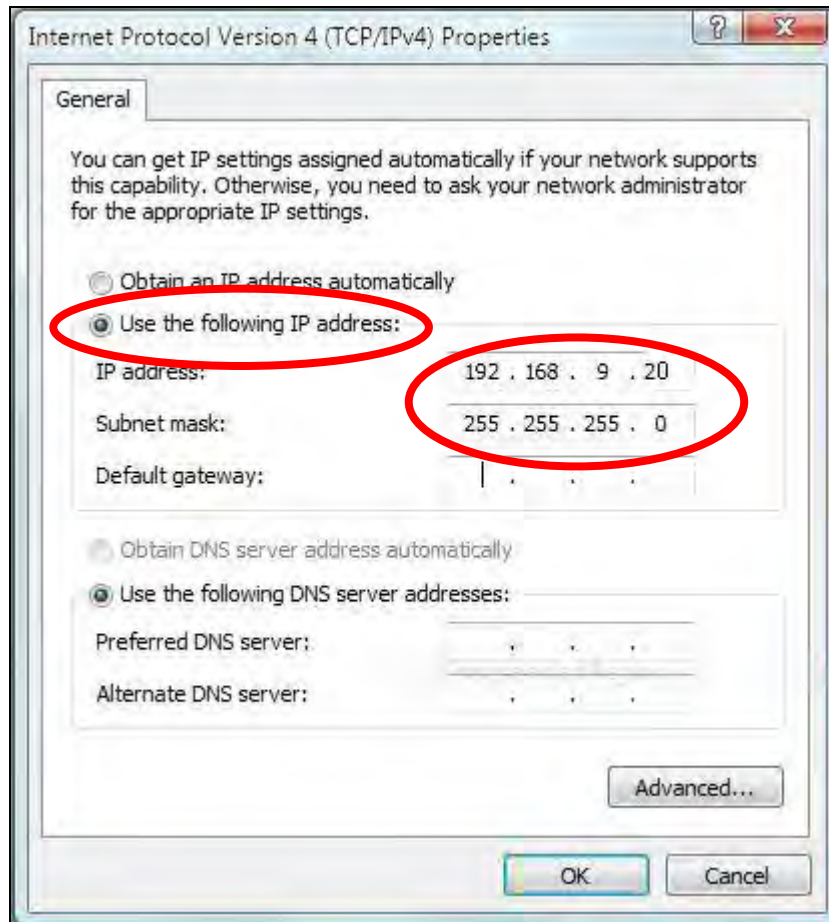


Your existing static IP address will be displayed in the “IP address” field before you replace it. Please make a note of this IP address, subnet mask, default gateway and DNS server addresses.

IP address: 192.168.9.20

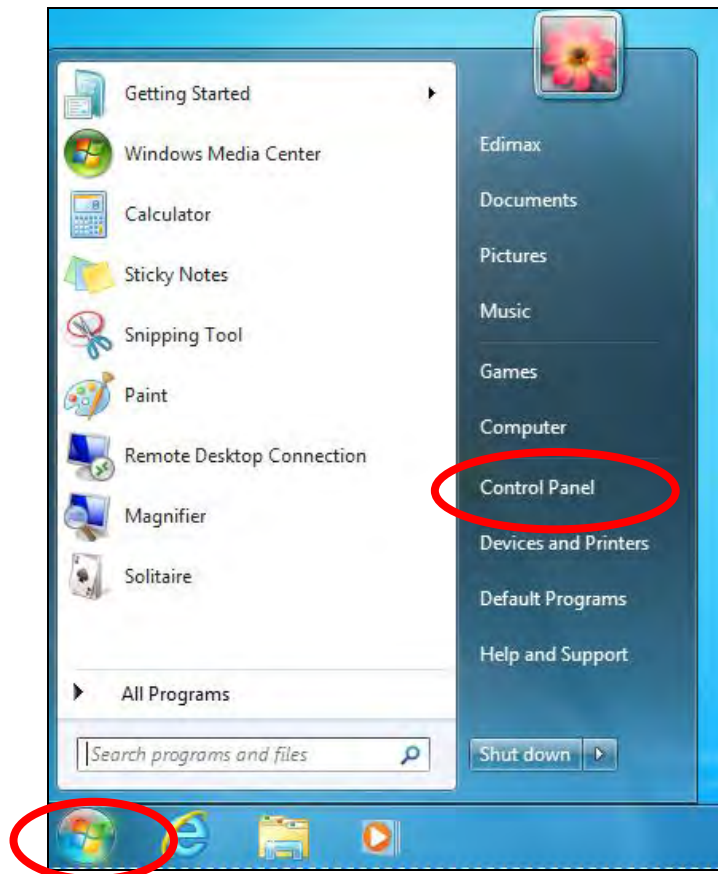
Subnet Mask: 255.255.255.0

Click ‘OK’ when finished.

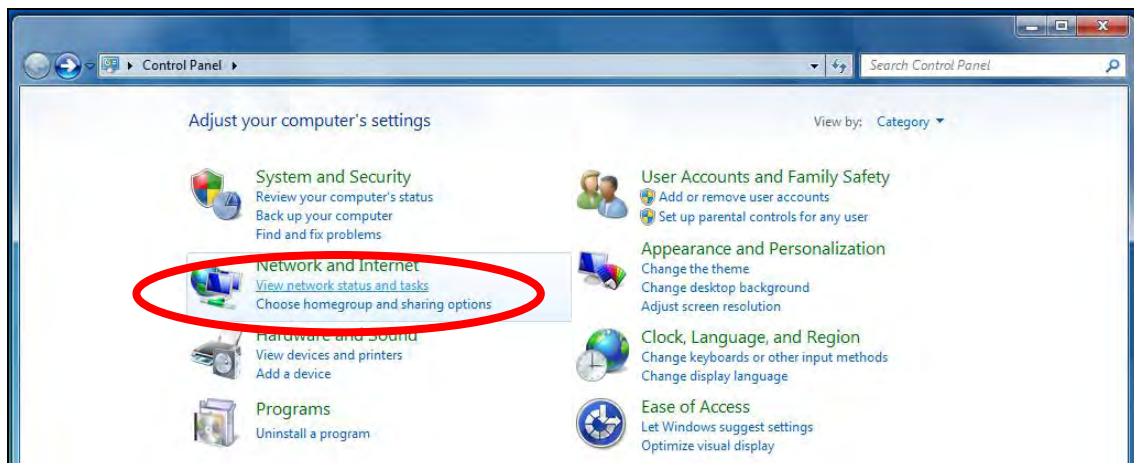


VII-1-2-3. Windows 7

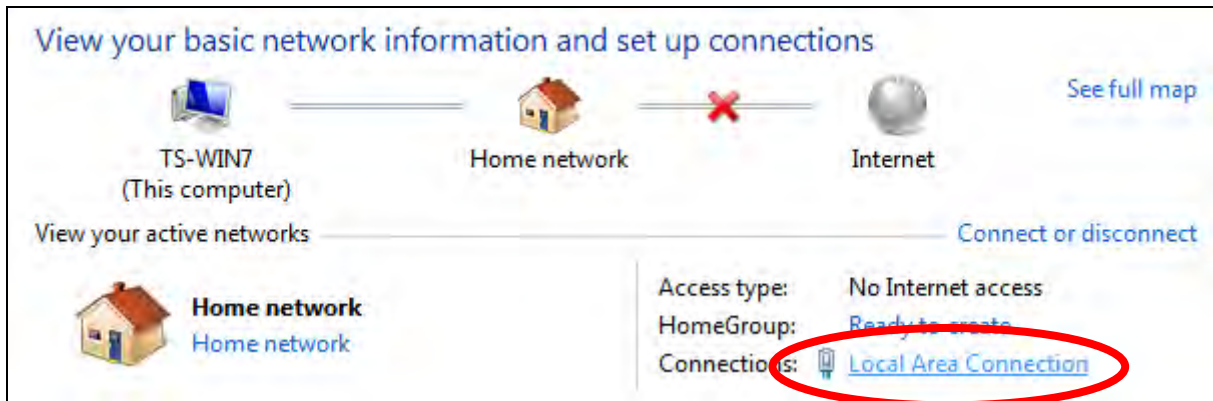
1. Click the “Start” button (it should be located in the lower-left corner of your computer), then click “Control Panel”.



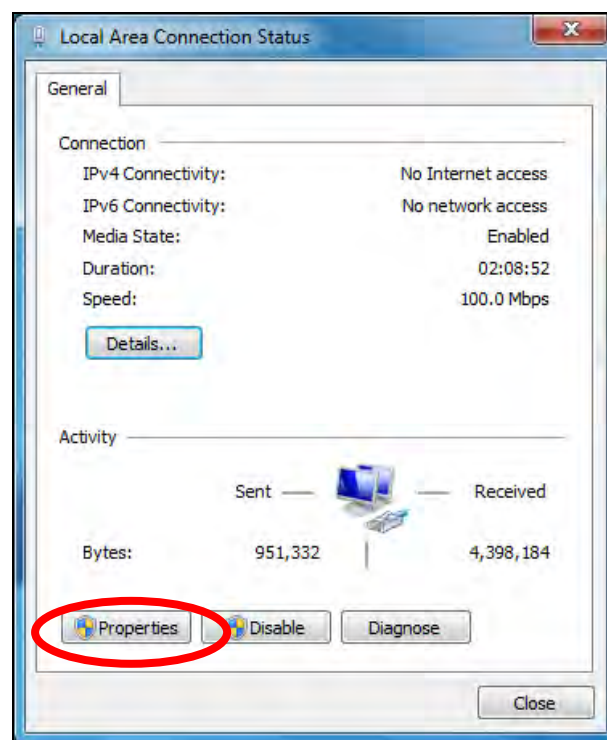
2. Under “Network and Internet” click “View network status and tasks”.



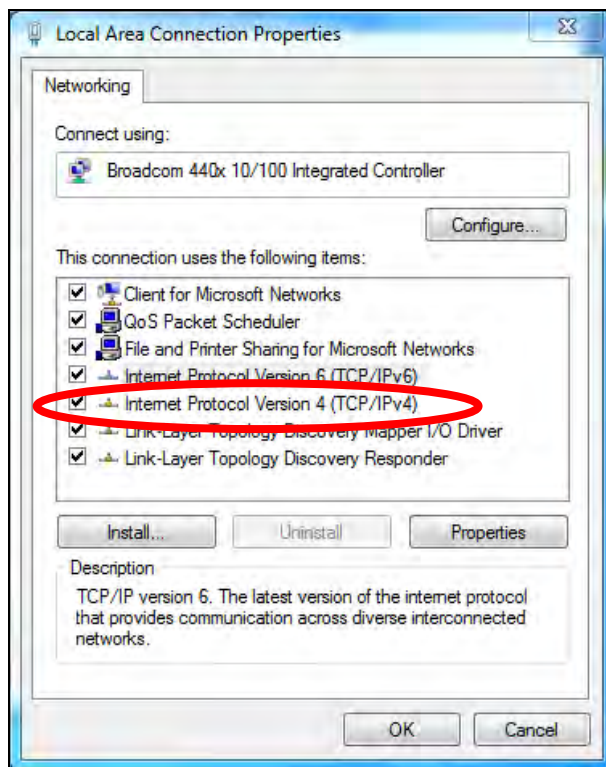
3. Click “Local Area Connection”.



4. Click “Properties”.



5. Select “Internet Protocol Version 4 (TCP/IPv4) and then click “Properties”.



6. Select “Use the following IP address”, then input the following values:

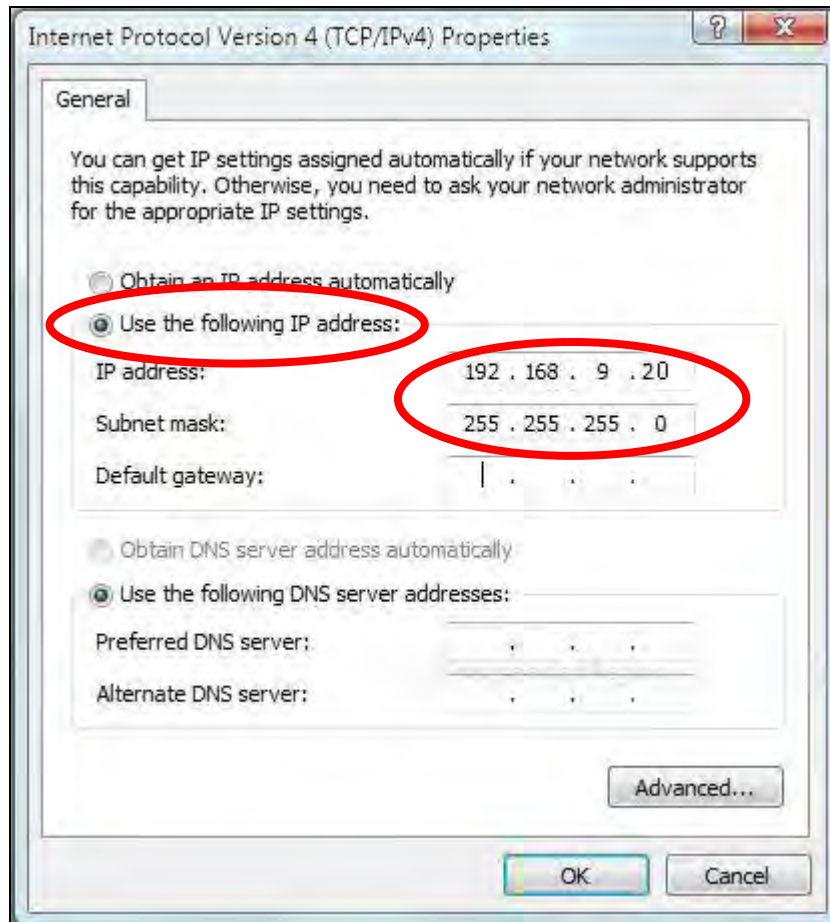


Your existing static IP address will be displayed in the “IP address” field before you replace it. Please make a note of this IP address, subnet mask, default gateway and DNS server addresses.

IP address: 192.168.9.20

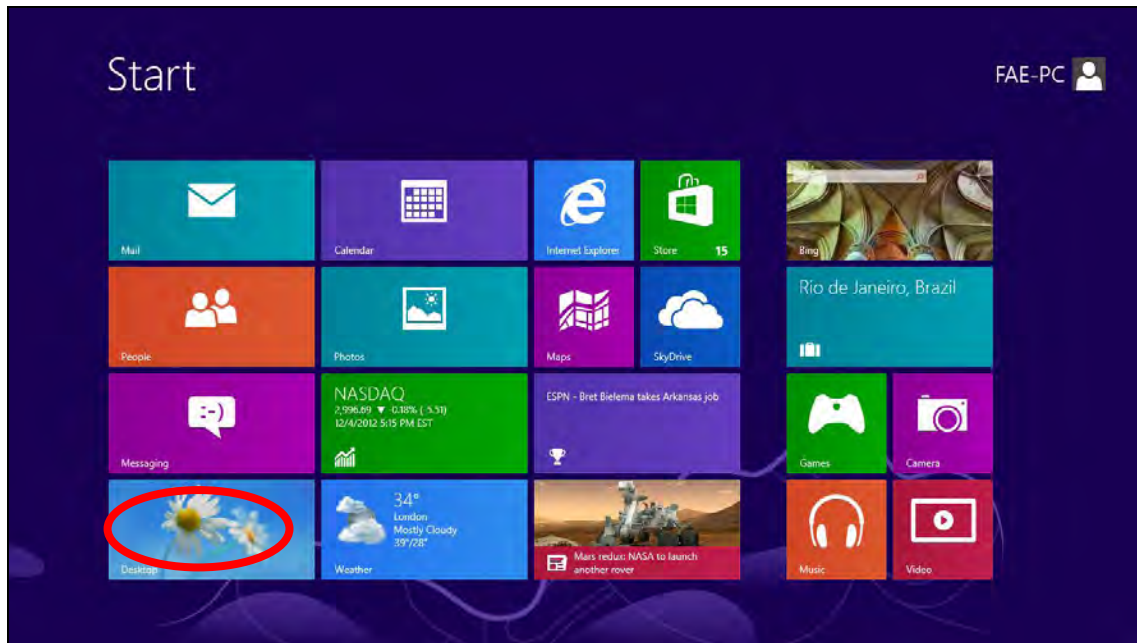
Subnet Mask: 255.255.255.0

Click ‘OK’ when finished.

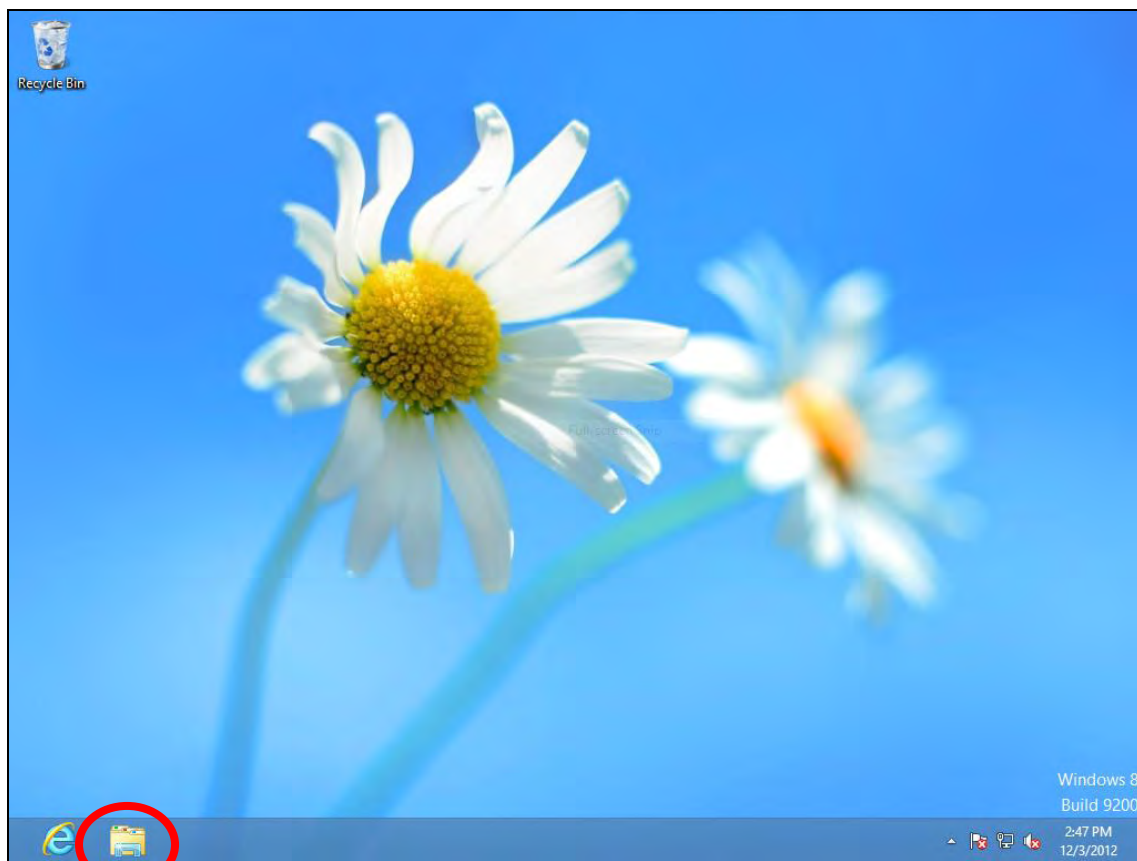


VII-1-2-4. Windows 8

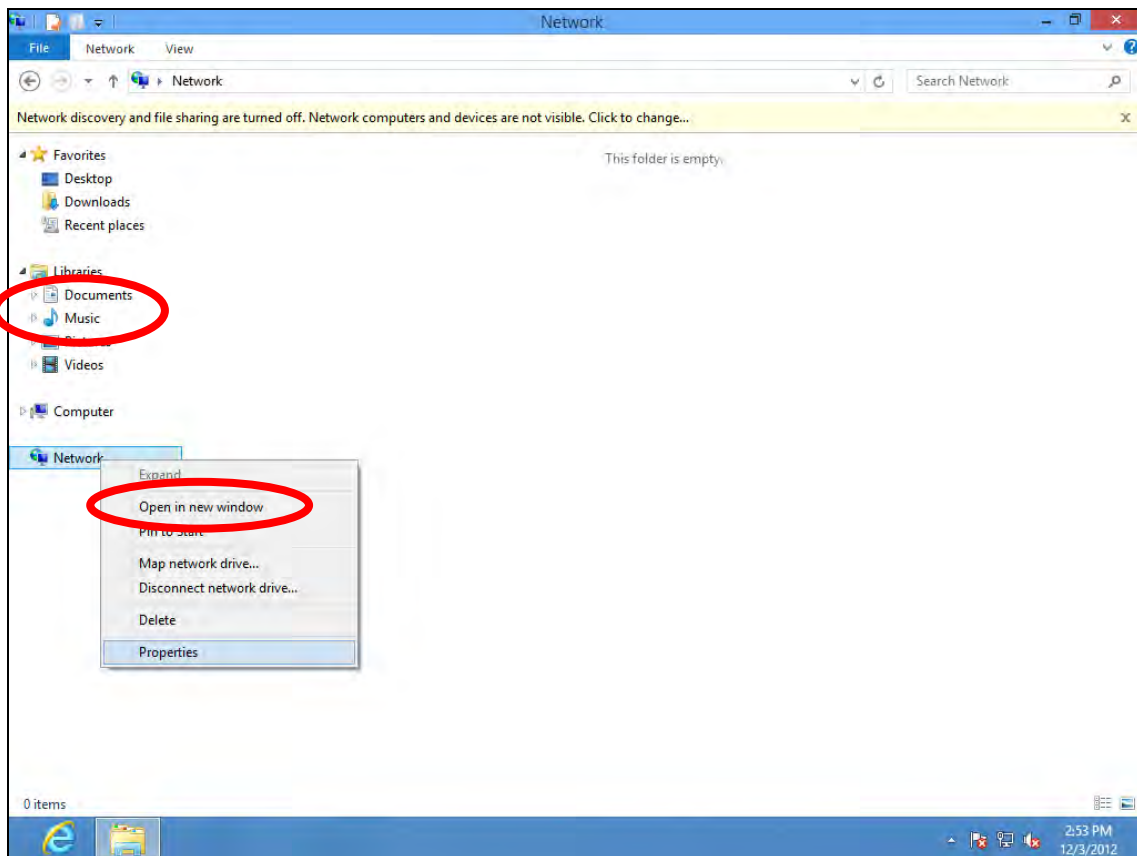
1. From the Windows 8 Start screen, you need to switch to desktop mode. Move your cursor to the bottom left of the screen and click.



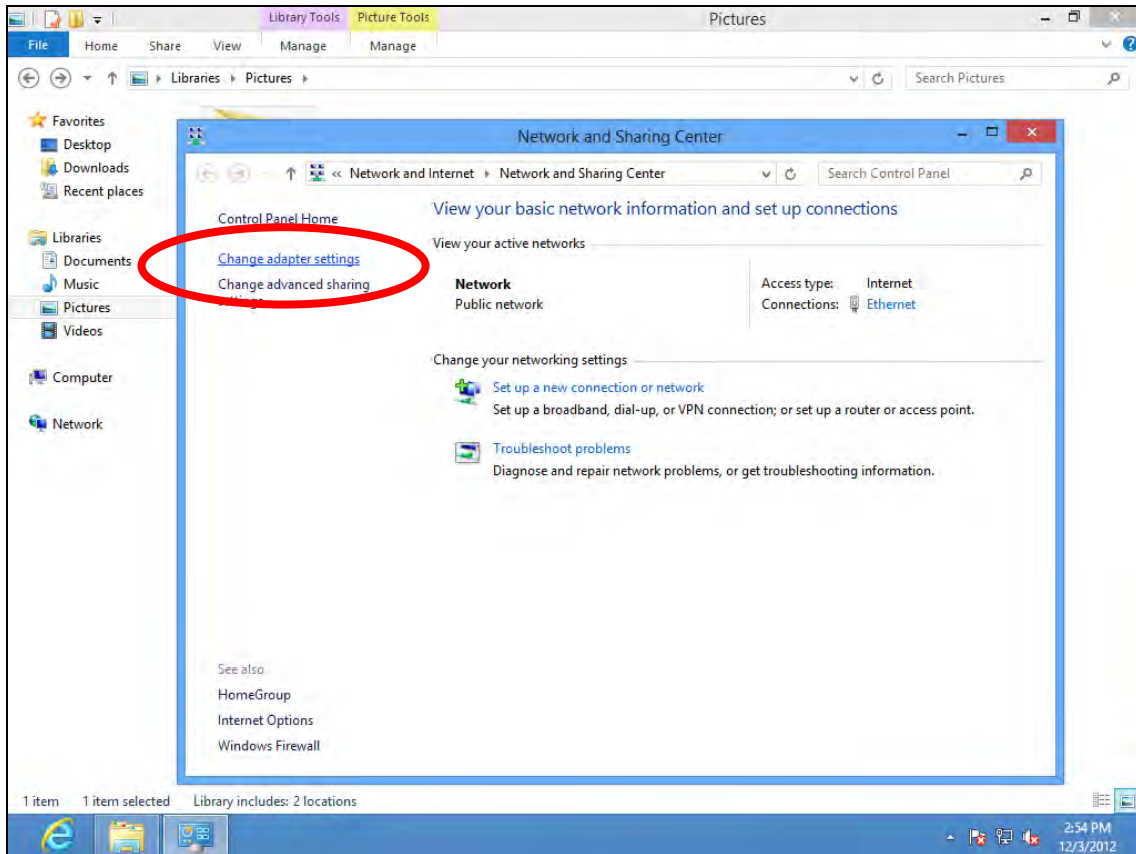
2. In desktop mode, click the File Explorer icon in the bottom left of the screen, as shown below.



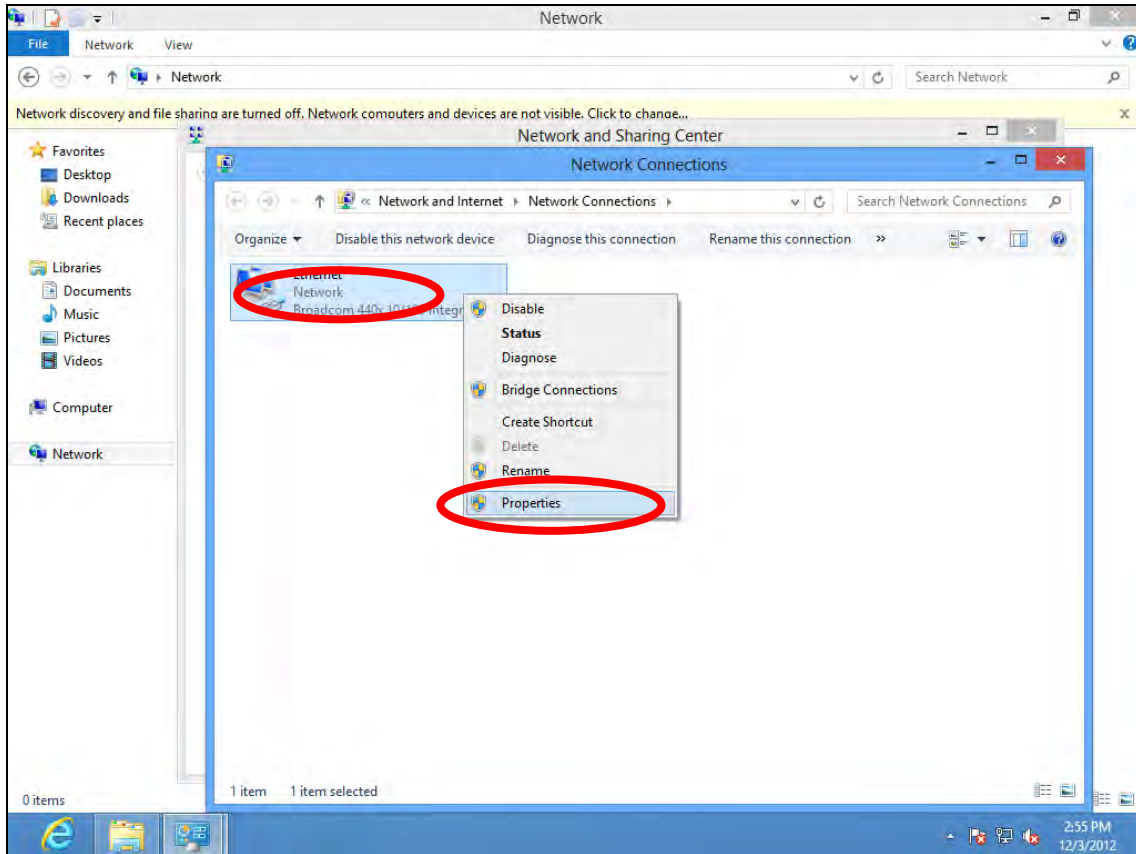
3. Right click “Network” and then select “Properties”.



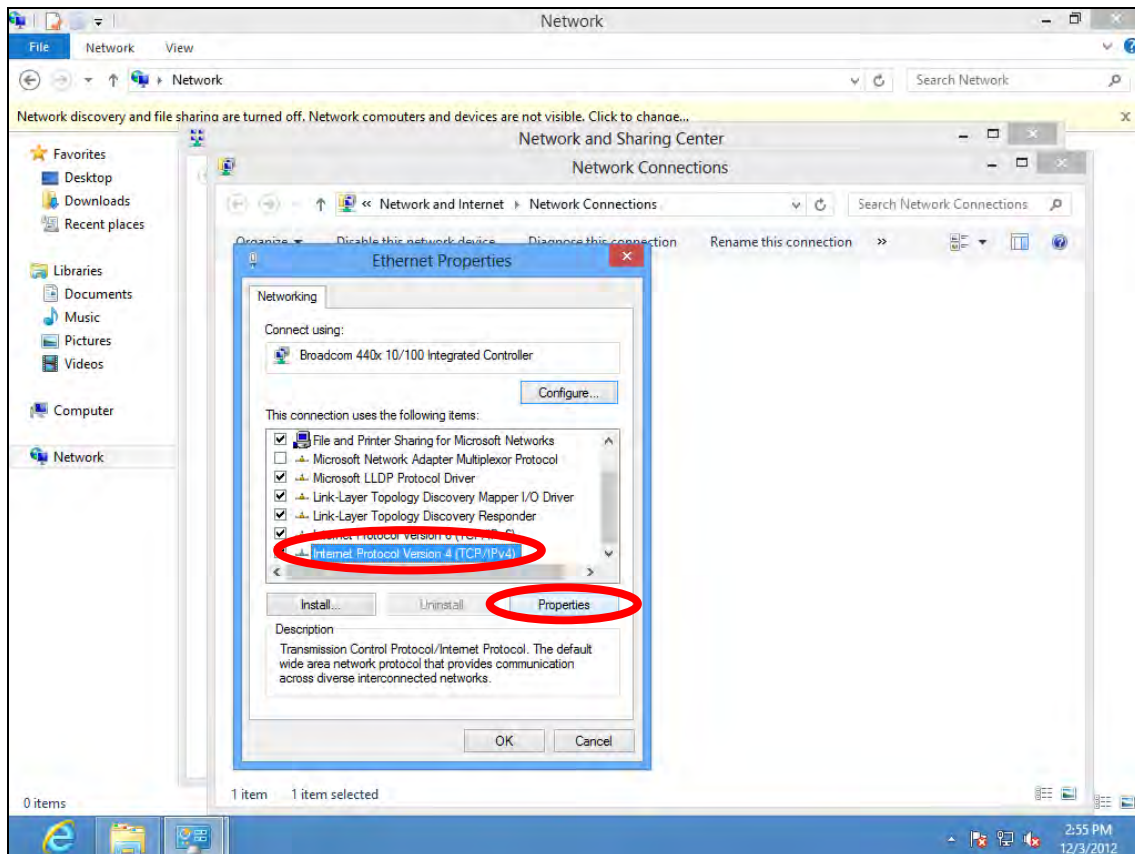
4. In the window that opens, select “Change adapter settings” from the left side.



5. Choose your connection and right click, then select “Properties”.



6. Select “Internet Protocol Version 4 (TCP/IPv4)” and then click “Properties”.



7. Select “Use the following IP address”, then input the following values:



Your existing static IP address will be displayed in the “IP address” field before you replace it. Please make a note of this IP address, subnet mask, default gateway and DNS server addresses.

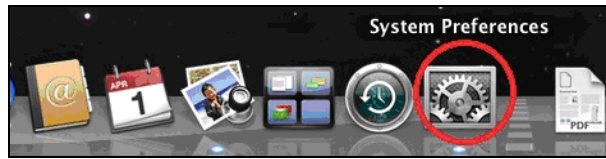
IP address: 192.168.9.20

Subnet Mask: 255.255.255.0

Click ‘OK’ when finished.

VII-1-2-5. Mac

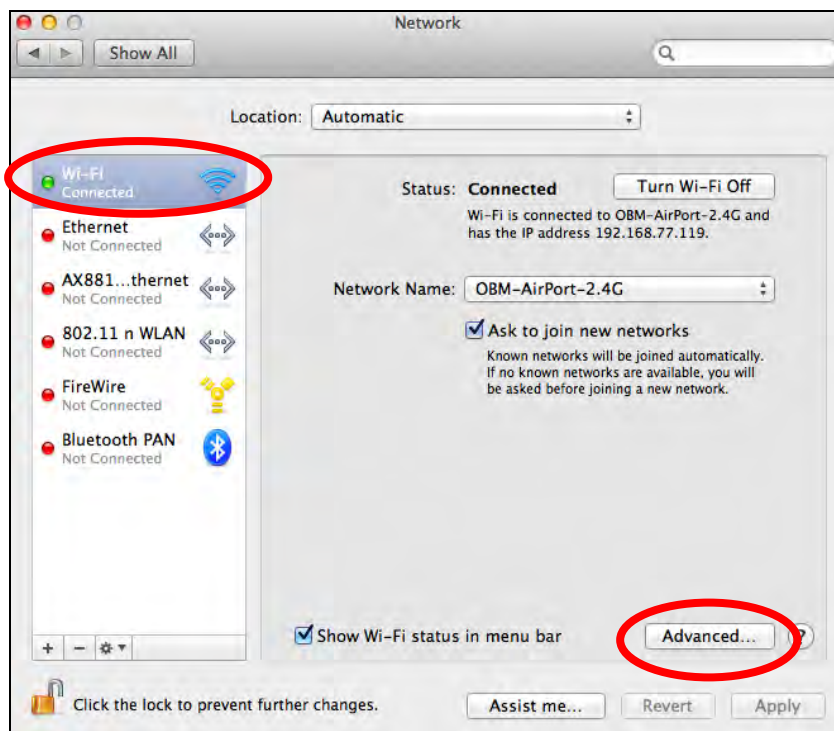
1. Have your Macintosh computer operate as usual, and click on “System Preferences”



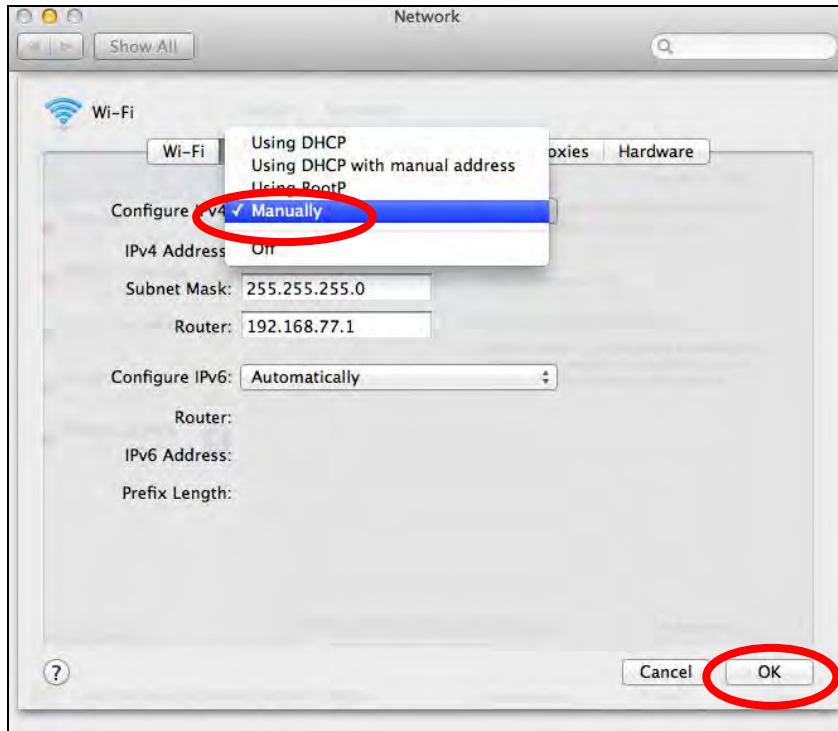
2. In System Preferences, click on “Network”.



3. Click on “Wi-Fi” in the left panel and then click “Advanced” in the lower right corner.

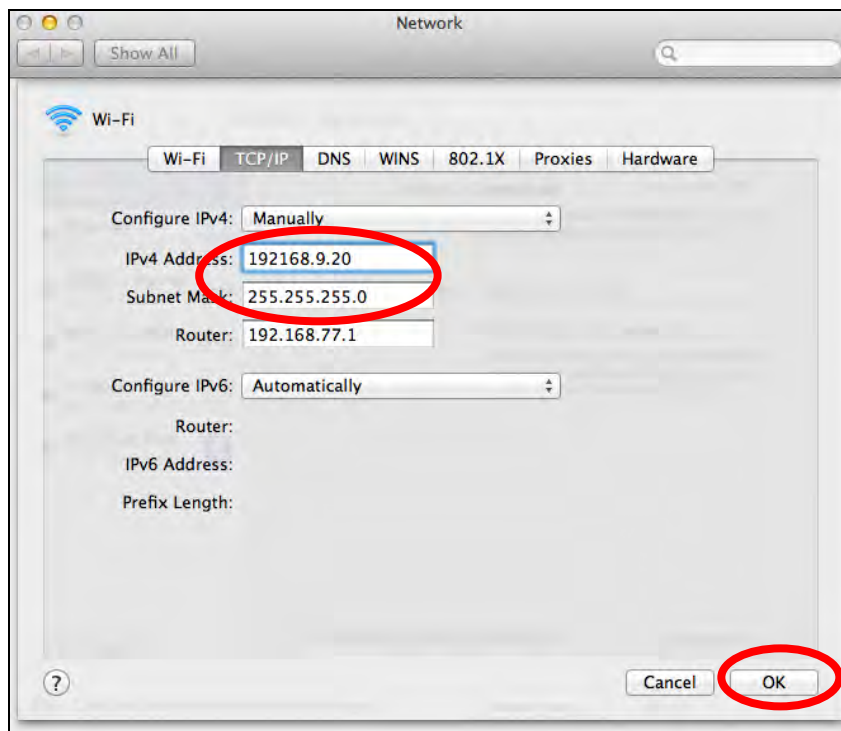


4. Select “TCP/IP” from the top menu and select “Manually” from the drop down menu labeled “Configure IPv4”, then click “OK”.

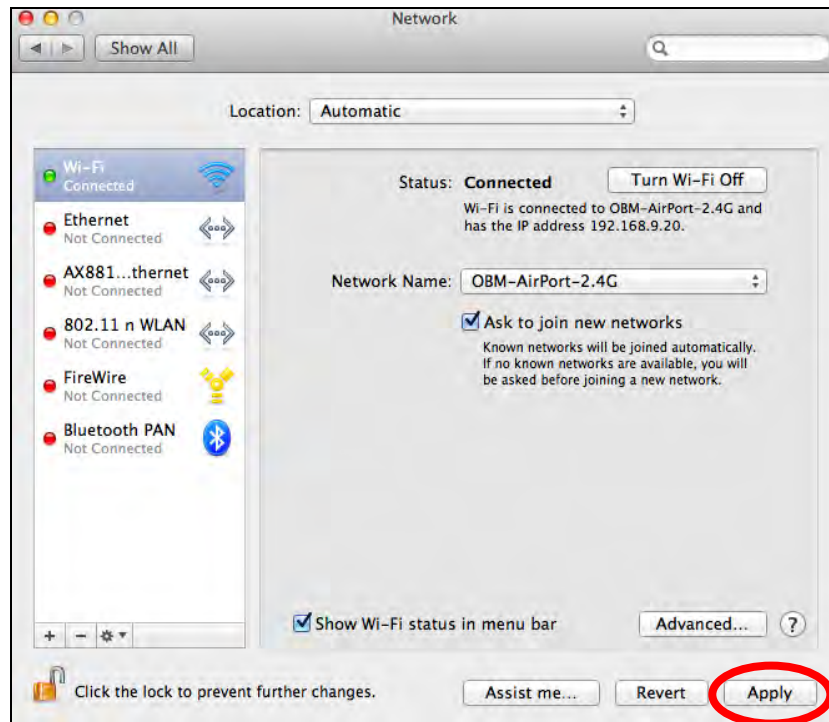


Your existing static IP address will be displayed in the “IP address” field before you replace it. Please make a note of this IP address, subnet mask, default gateway and DNS server addresses.

- 5.** In the “IPv4 Address” and “Subnet Mask” field enter IP address 192.168.9.20 and subnet mask 255.255.255.0. Click on “OK”.




6. Click “Apply” to save the changes.



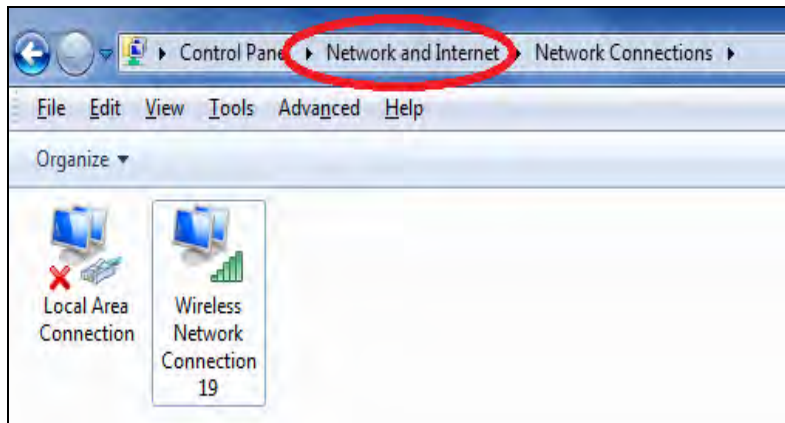
VII-1-3. How to Find Your Network Security Key

To find your network security key, please follow the instructions appropriate for your operating system.

 ***If you are using Windows XP or earlier, please contact your ISP or router manufacturer to find your network security key.***

VII-1-3-1. Windows 7 & Vista

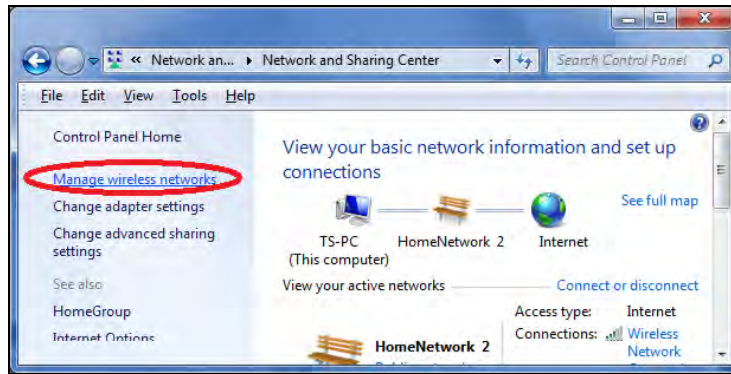
1. Open “Control Panel” and click on “Network and Internet” in the top menu.



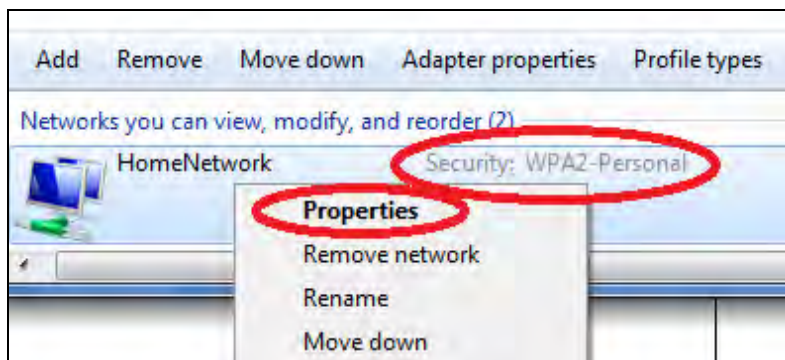
2. Click on “View network status and tasks” which is under the heading “Network and Sharing Center”.



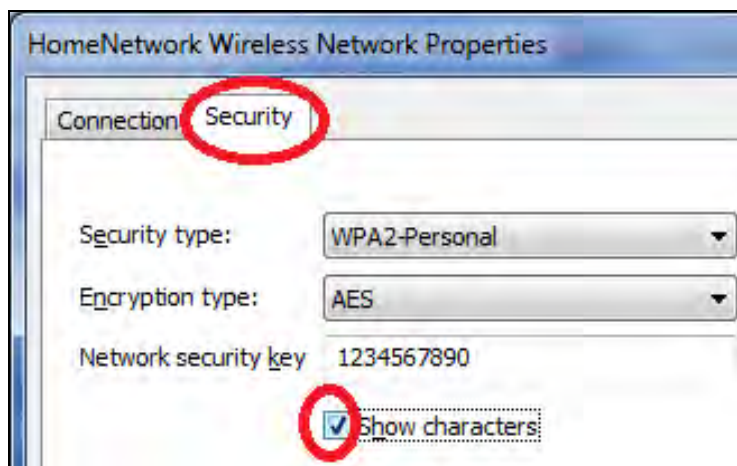
3. Click on “Manage wireless networks” in the left menu.



4. You should see the profile of your Wi-Fi network in the list. Right click on your Wi-Fi network and then click on “Properties”.

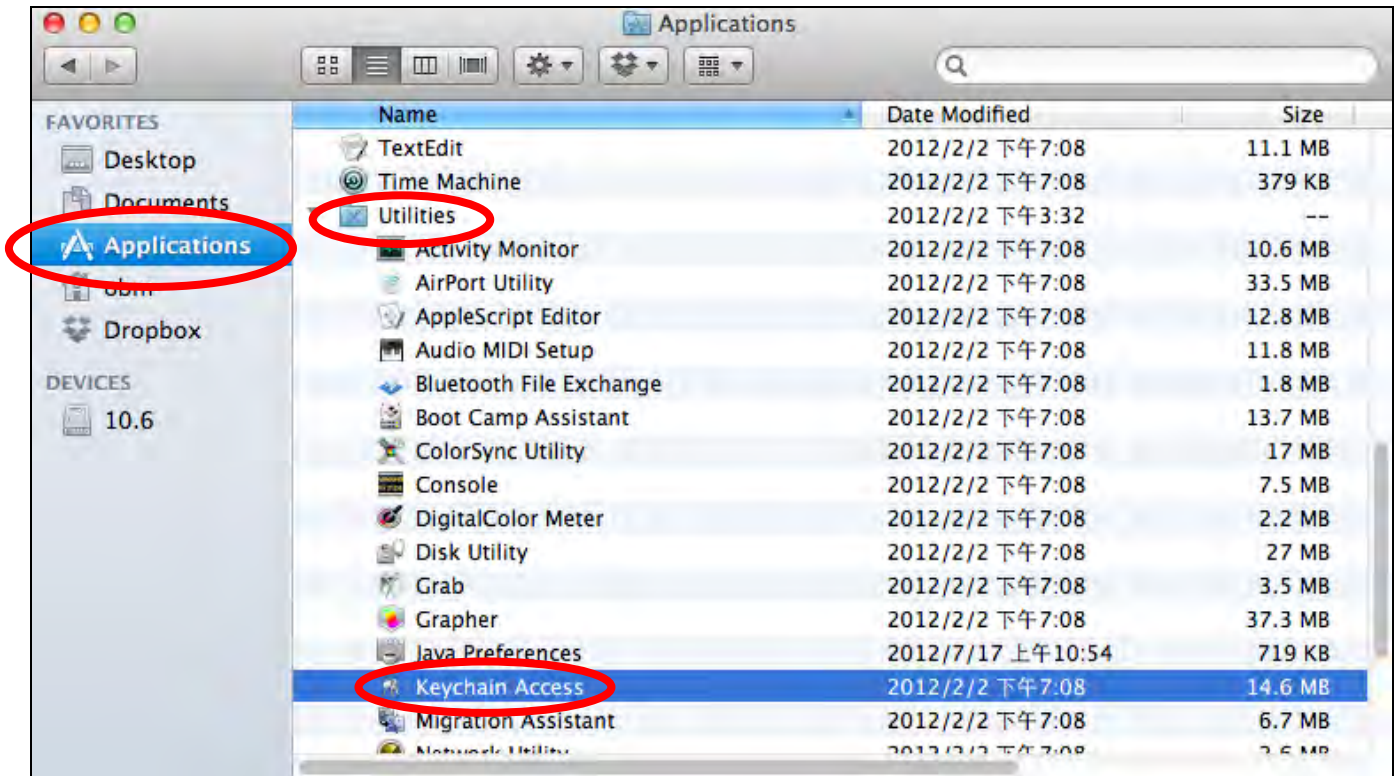


5. Click on the “Security” tab, and then check the box labeled “Show characters”. This will show your network security key. Click the “Cancel” button to close the window.

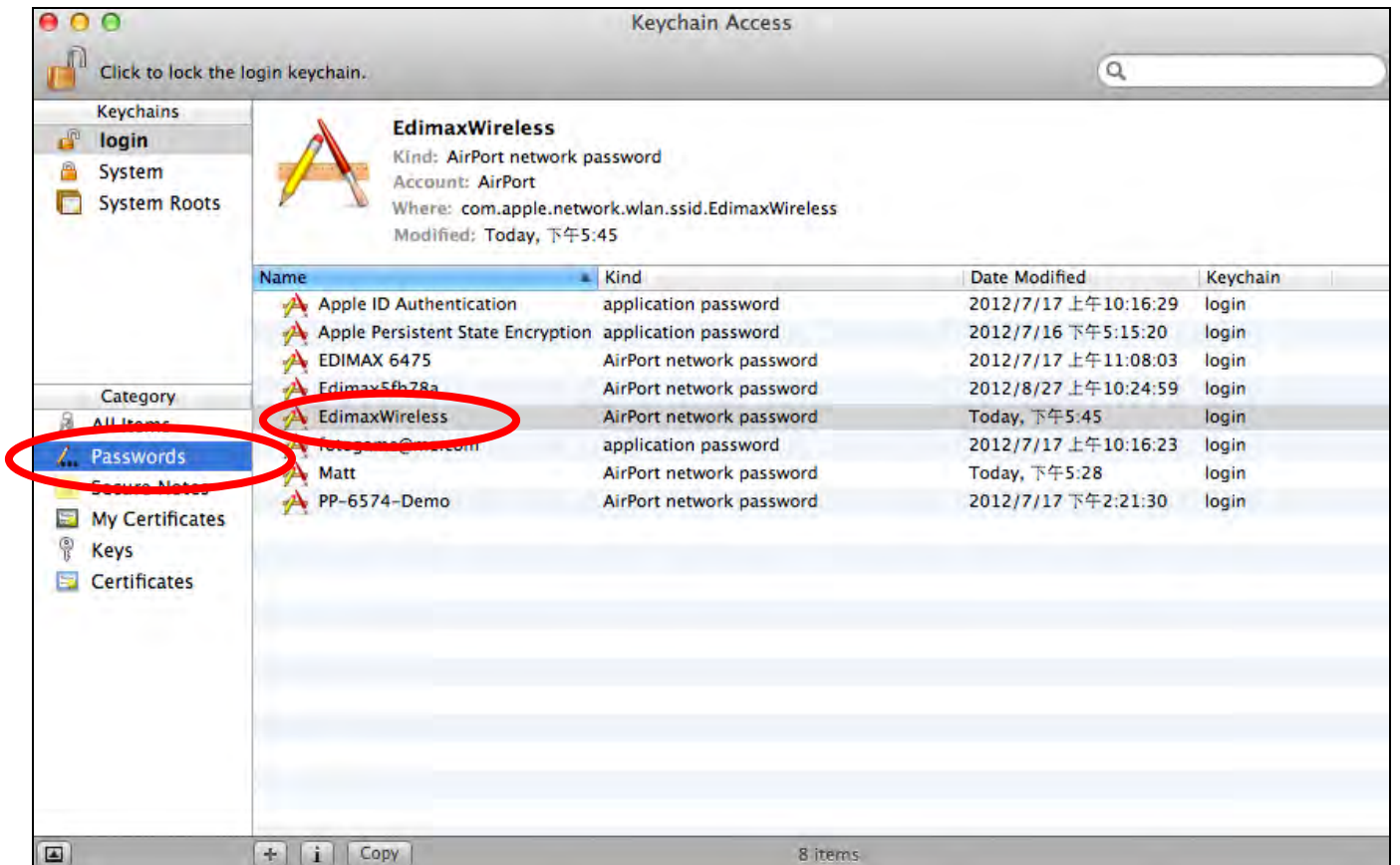


VII-1-3-2. Mac

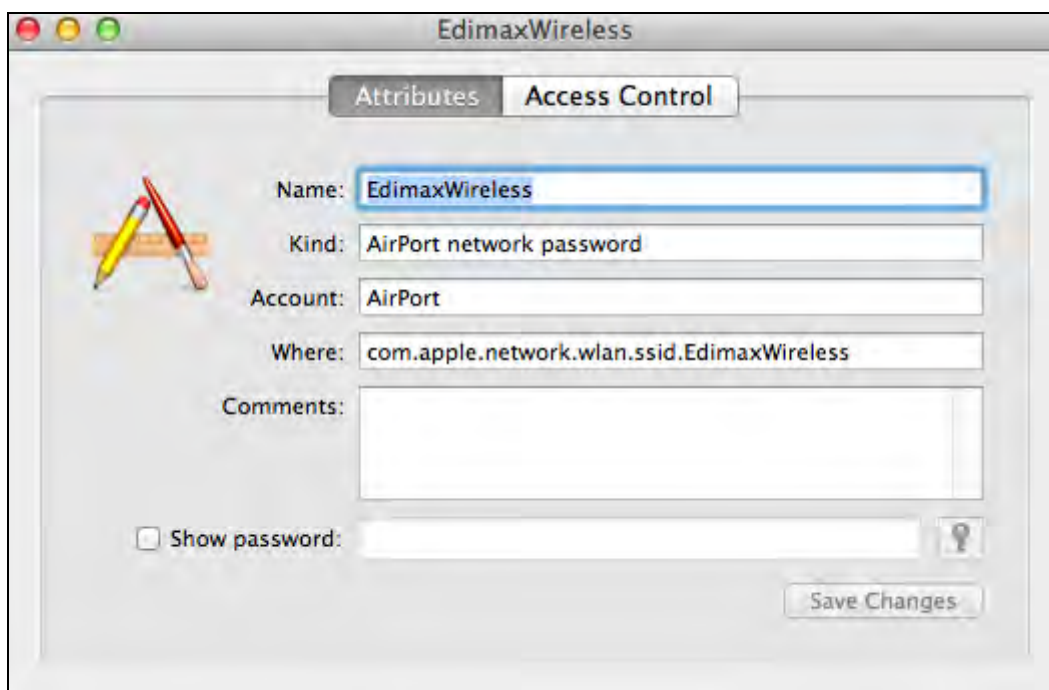
1. Open a new Finder window, and select “Applications” from the menu on the left side. Open the folder labeled “Utilities” and then open the application “Keychain Access”.



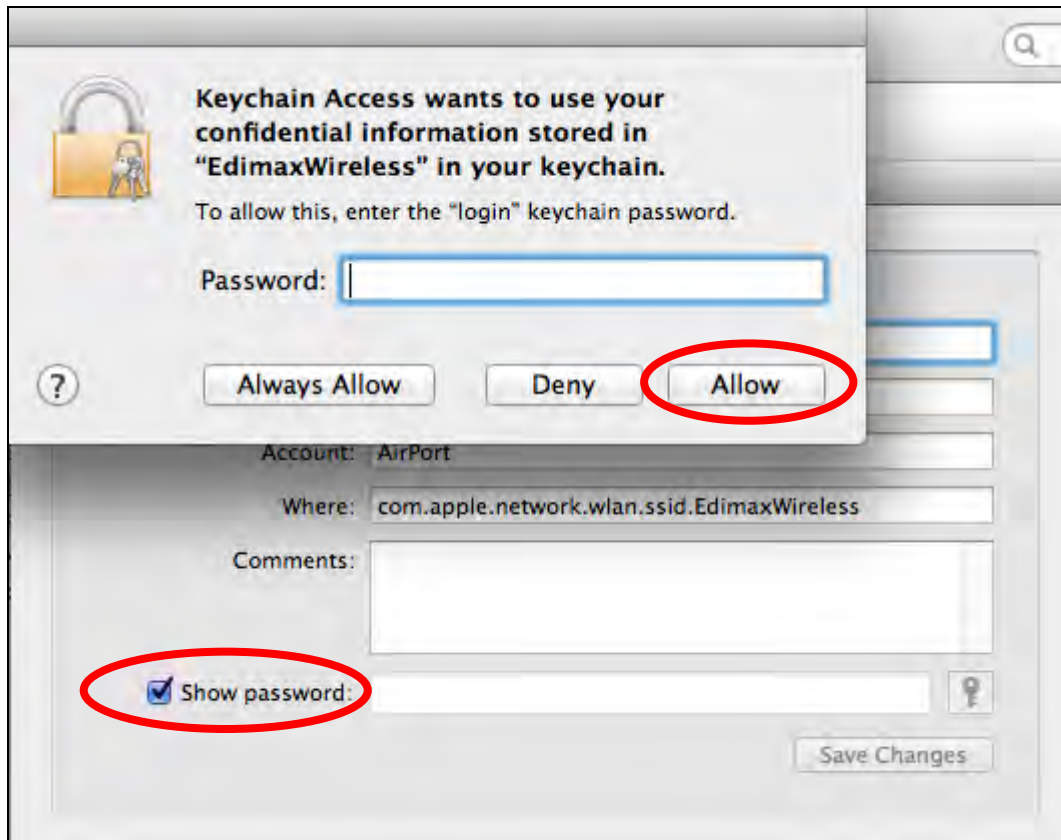
2. Select “Passwords” from the sub-menu labeled “Category” on the left side, as shown below. Then search the list in the main panel for the SSID of your network. In this example, the SSID is “EdimaxWireless” – though your SSID will be unique to your network.



3. Double click the SSID of your network and you will see the following window.



4. Check the box labeled “Show password” and you will be asked to enter your administrative password, which you use to log into your Mac. Enter your password and click “Allow”.



Your network security password will now be displayed in the field next to the box labeled "Show password". In the example below, the network security password is "edimax1234". Please make a note of your network security password.

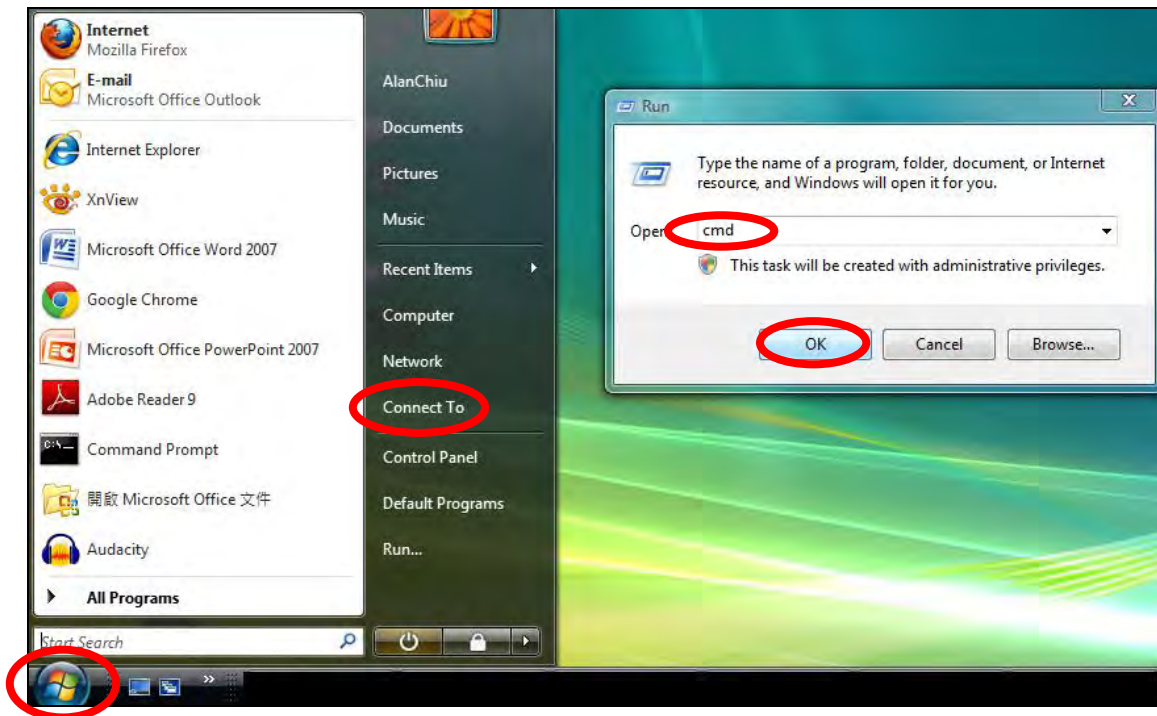


VII-1-4. How to Find Your Router's IP Address

To find your router's IP address, please follow the instructions appropriate for your operating system.

VII-1-4-1. Windows XP, Vista & 7

1. Go to "Start", select "Run" and type "cmd", then press Enter or click "OK".



2. A new window will open, type "ipconfig" and press Enter.

```
Administrator: C:\Windows\system32\cmd.exe
Microsoft Windows [Version 6.0.60021
Copyright (c) 2006 Microsoft Corporation. All rights reserved.

C:\Users\AlanChiu>ipconfig
```

3. Your router's IP address will be displayed next to "Default Gateway".

```
Administrator: C:\Windows\system32\cmd.exe
Ethernet adapter 區域連線:

    Connection-specific DNS Suffix . . . :
    Link-local IPv6 Address . . . . . : fe80::4cdc:3e90:ba56:1722%9
    IPv4 Address. . . . . : 192.168.10.14
    Subnet Mask . . . . . : 255.255.255.0
    Default Gateway . . . . . : fe80::1867:2a1b:e9c2:e57b%9
                                192.168.10.254

Wireless LAN adapter 無線網路連線:

    Media State . . . . . : Media disconnected
    Connection-specific DNS Suffix . . : edimax.com

Tunnel adapter 區域連線* 6:

    Media State . . . . . : Media disconnected
    Connection-specific DNS Suffix . . :

Tunnel adapter 區域連線* 7:

    Media State . . . . . : Media disconnected
    Connection-specific DNS Suffix . . :

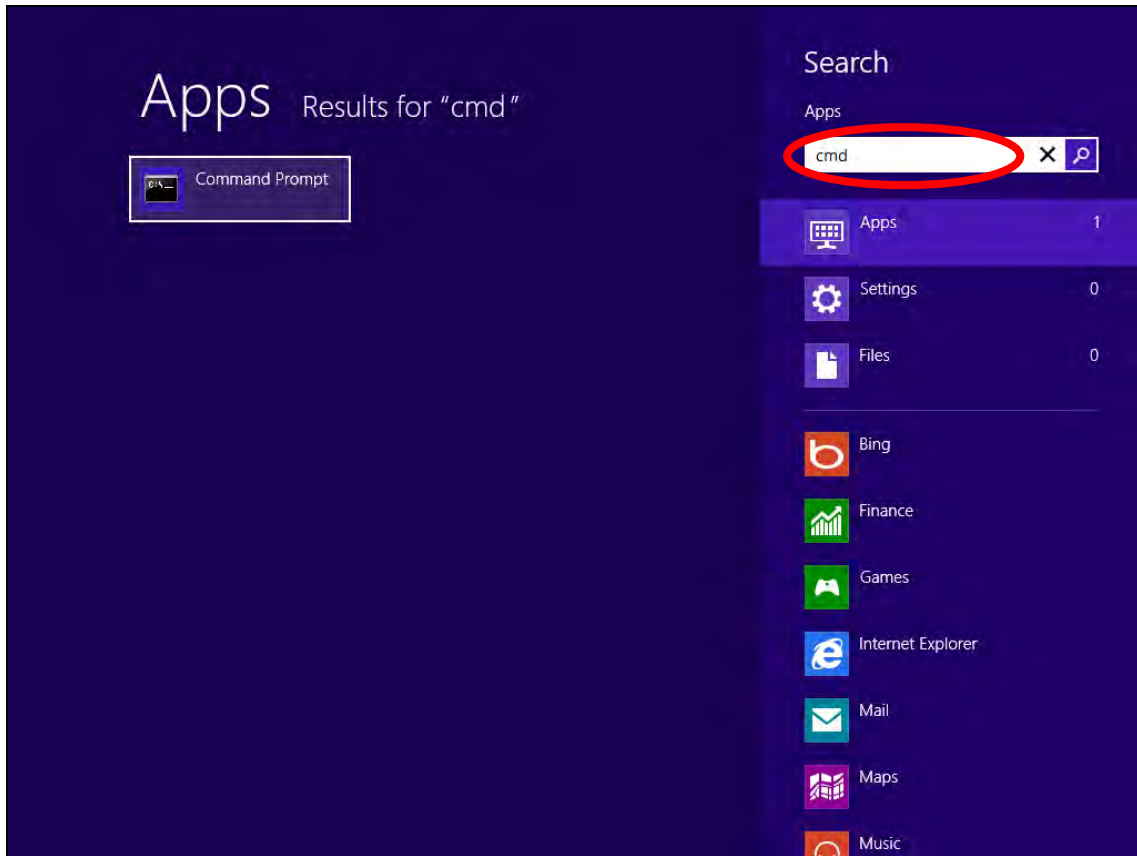
C:\Users\AlanChiu>
```

VII-1-4-2. Windows 8

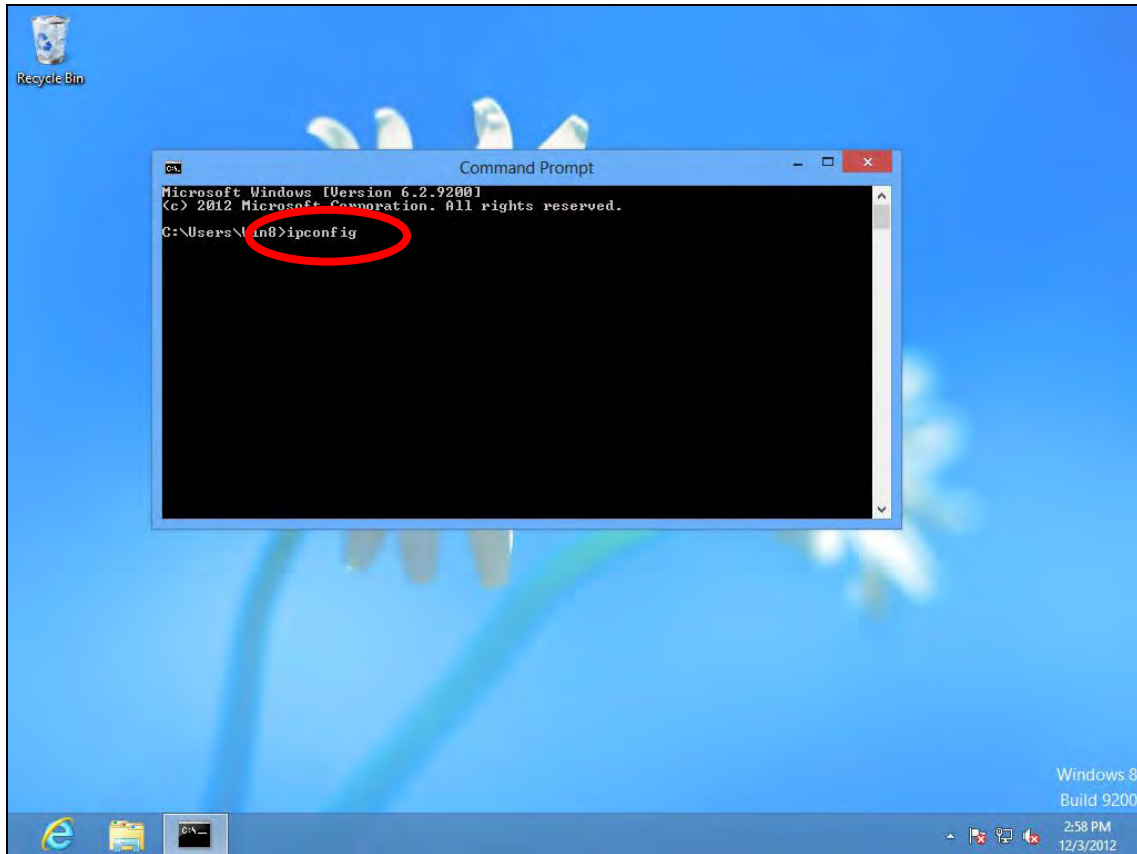
1. From the Windows 8 Start screen, move your cursor to the top right corner of the screen to display the Charms bar.



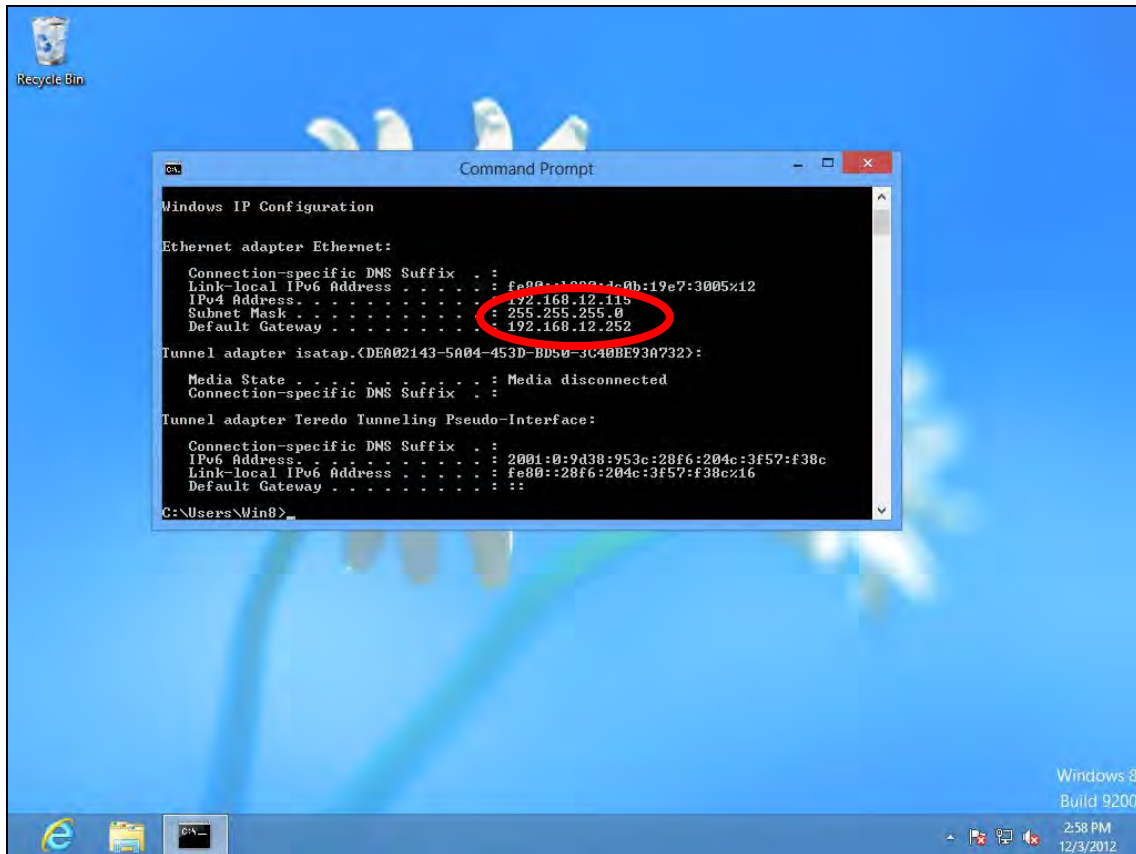
2. Click "Search" and enter "cmd" into the search bar. Click the "Command Prompt" app which be displayed on the left side.



3. A new window will open, type "ipconfig" and press Enter.

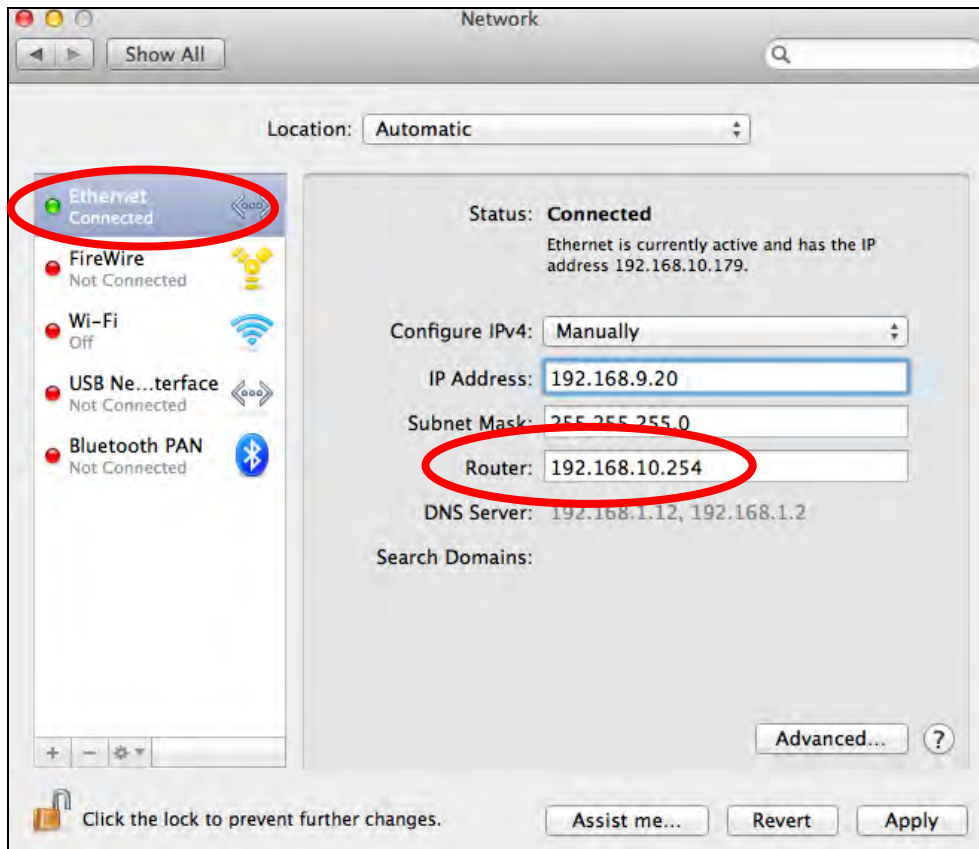


4. Your router's IP address will be displayed next to "Default Gateway".

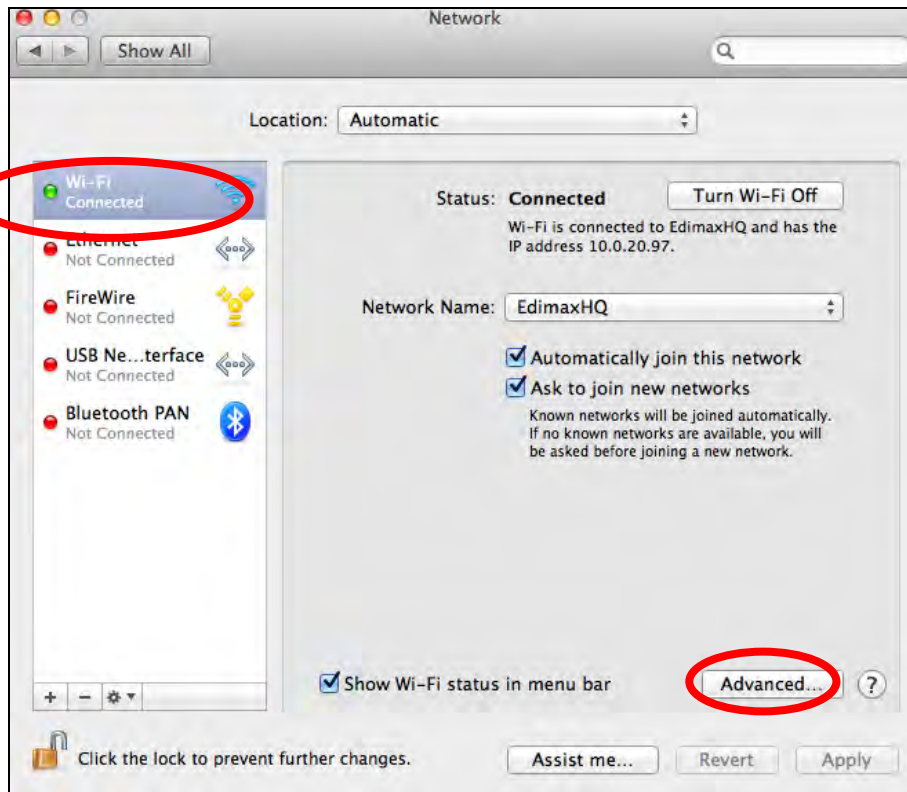


VII-1-4-3. Mac

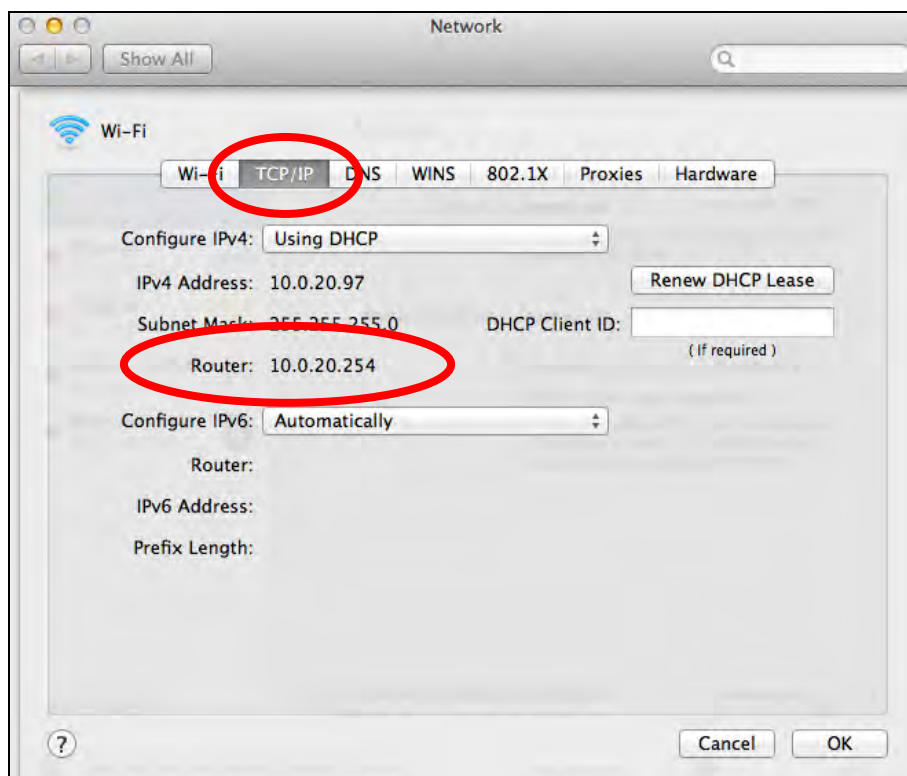
1. Launch “System Preferences” and click on “Network”.
2. If you are using an Ethernet cable to connect to your network, your router’s IP address will be displayed next to “Router”.



3. If you are using Wi-Fi, click “Wi-Fi” in the left panel, and then “Advanced” in the bottom right corner.




4. Click the “TCP/IP” tab and your router’s IP address will be displayed next to “Router”.

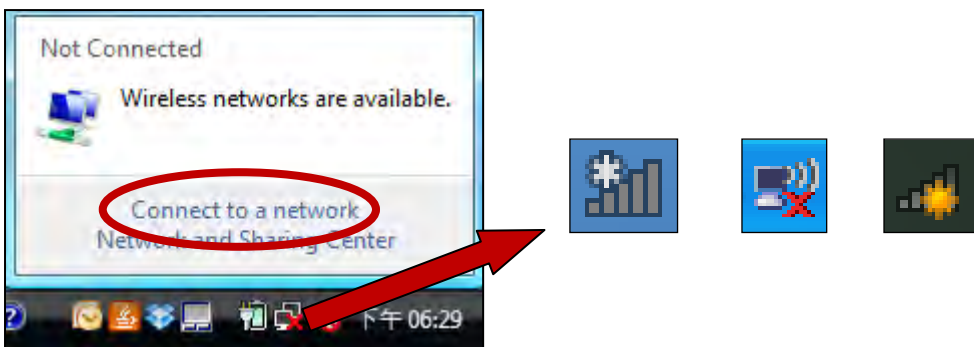


VII-2. Connecting to a Wi-Fi network

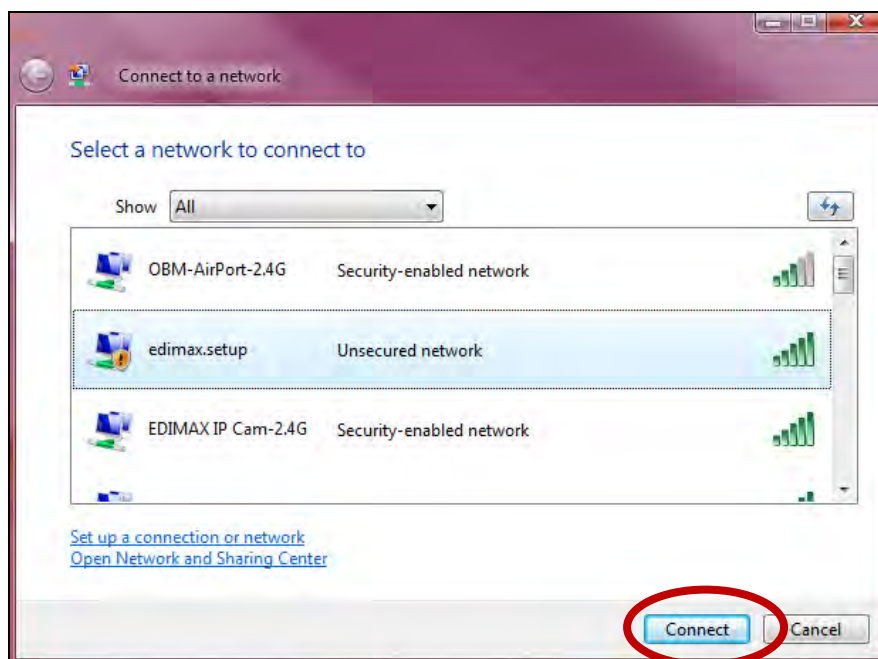
For help connecting to your device's **Edimax.Setup** SSID for initial setup, or to connect to your device's new Wi-Fi network (SSID) after setup is complete, follow the guide below:

 ***Below is an example of how to connect using Windows Vista – the process may vary slightly for other versions of Windows.***

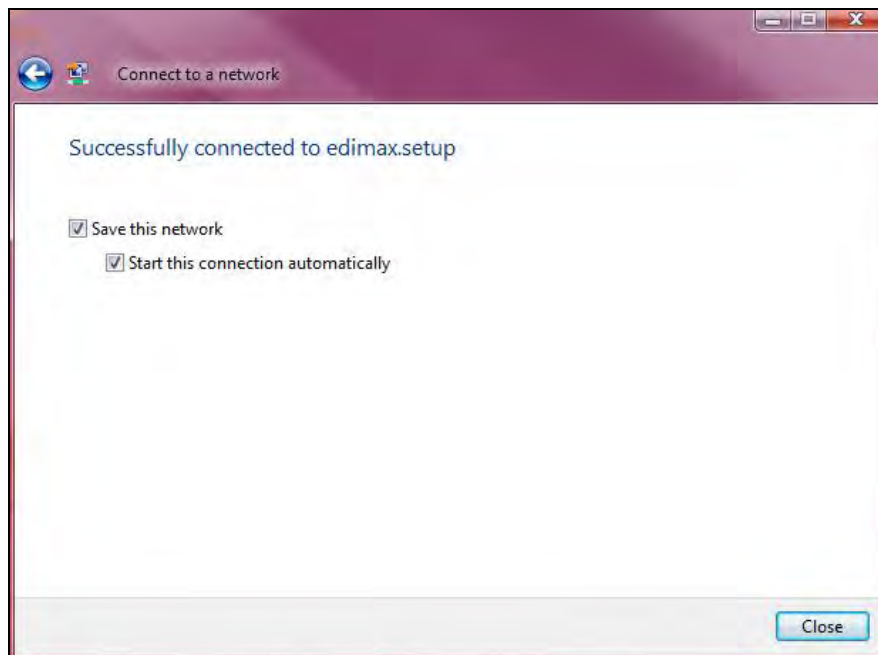
1. Click the network icon (,  or ) in the system tray and select “Connect to a network”.



2. Search for the SSID of your EW-7438RPn Air and then click “Connect”. If you set a password for your network, you will then be prompted to enter it.



3. After correctly entering your password, you will be successfully connected to the EW-7438RPn Air's wireless network.



VII-3. Troubleshooting

If you are experiencing problems with your wireless extender, please refer to this troubleshooting guide before contacting your dealer of purchase for help.

Scenario	Solution
I can't log onto the browser-based configuration interface.	<ul style="list-style-type: none"> a. Please check that the extender is correctly inserted into a power socket and check the LEDs on the front panel. If the extender is initializing after being switched off or restarted, wait for a 2 minutes and try again. b. Make sure you are using the full, correct URL: http://edimaxext.setup c. If you are using a MAC or IP address filter, try to connect the wireless extender using a different computer. d. Set your computer to obtain an IP address automatically (DHCP), and see if your computer can obtain an IP address. e. Ensure that all other Wi-Fi/Ethernet adapters are disabled or disconnected. f. Password is case-sensitive. Make sure the "Caps Lock" light is not illuminated. g. b. If you do not know your password, restore the device to factory settings.
I can't establish a connection to my wireless extender.	<ul style="list-style-type: none"> a. If encryption is enabled, please re-check WEP or WPA passphrase settings on your wireless client. The password is case-sensitive. Make sure the "Caps Lock" light is not illuminated. b. Try moving closer to the wireless extender. c. Switch off the extender and switch it back on after 10 seconds. d. Please check that the extender is correctly inserted into a power socket and check the LEDs on the front panel.
File downloads are very slow or frequently interrupted.	<ul style="list-style-type: none"> a. Reset the wireless extender b. Try again later. Your local network may be experiencing technical difficulties or very high usage. c. Change channel number.
The wireless extender	<ul style="list-style-type: none"> a. It is normal for the wireless extender to heat up

is extremely hot.	<p>during frequent use. If you can safely place your hand on the wireless extender, the temperature of the device is at a normal level.</p> <p>b. If you smell burning or see smoke coming from wireless extender then disconnect the extender immediately, as far as it is safely possible to do so. Call your dealer of purchase for help.</p>
My network device can't access the Internet.	<p>a. Ensure that your broadband router is fully functional.</p> <p>b. Switch off both your network device and wireless extender and switch back on again.</p> <p>c. Ensure that the wireless extender is powered on (check the PWR LED).</p> <p>d. On the browser based configuration interface home page, check "Status" under "Wireless Configuration". It should be "Connected" – if it is "Disconnected" then this means the wireless extender is not connected to your router/access point.</p>
My wireless extender has a poor signal from my access point/router.	<p>The best location to place the Wi-Fi extender is one which is an open space, roughly in the middle between your router and the Wi-Fi dead zone, and where the Wi-Fi extender LED displays "Excellent" signal strength.</p> <p>a. Keep the extender away from other radio devices such as microwaves or wireless telephones.</p> <p>b. Do not put the extender in the corner of a room or under/nearby metal.</p> <p>c. It is recommended to plug the extender directly into a wall socket.</p> <p>d. Ensure there are as few obstacles as possible between the extender and the access point/router.</p>
Can I use the same SSID as my current gateway router for my Wi-Fi extender?	Yes, but it is not recommended as it will be difficult to distinguish between two SSIDs with the same name.

COPYRIGHT

Copyright © Edimax Technology Co., Ltd. all rights reserved. No part of this publication may be reproduced, transmitted, transcribed, stored in a retrieval system, or translated into any language or computer language, in any form or by any means, electronic, mechanical, magnetic, optical, chemical, manual or otherwise, without the prior written permission from Edimax Technology Co., Ltd.

Edimax Technology Co., Ltd. makes no representations or warranties, either expressed or implied, with respect to the contents hereof and specifically disclaims any warranties, merchantability, or fitness for any particular purpose. Any software described in this manual is sold or licensed as is. Should the programs prove defective following their purchase, the buyer (and not this company, its distributor, or its dealer) assumes the entire cost of all necessary servicing, repair, and any incidental or consequential damages resulting from any defect in the software. Edimax Technology Co., Ltd. reserves the right to revise this publication and to make changes from time to time in the contents hereof without the obligation to notify any person of such revision or changes.

The product you have purchased and the setup screen may appear slightly different from those shown in this QIG. The software and specifications are subject to change without notice. Please visit our website www.edimax.com for updates. All brand and product names mentioned in this manual are trademarks and/or registered trademarks of their respective holders.

Federal Communication Commission Interference Statement

This equipment has been tested and found to comply with the limits for a Class B digital device, pursuant to Part 15 of FCC Rules. These limits are designed to provide reasonable protection against harmful interference in a residential installation. This equipment generates, uses, and can radiate radio frequency energy and, if not installed and used in accordance with the instructions, may cause harmful interference to radio communications. However, there is no guarantee that interference will not occur in a particular installation. If this equipment does cause harmful interference to radio or television reception, which can be determined by turning the equipment off and on, the user is encouraged to try to correct the interference by one or more of the following measures:

1. Reorient or relocate the receiving antenna.
2. Increase the separation between the equipment and receiver.
3. Connect the equipment into an outlet on a circuit different from that to which the receiver is connected.
4. Consult the dealer or an experienced radio technician for help.

FCC Caution

Any changes or modifications not expressly approved by the party responsible for compliance could void the authority to operate equipment.

This device complies with Part 15 of the FCC Rules. Operation is subject to the following two conditions: (1) this device may not cause harmful interference, and (2) this device must accept any interference received, including interference that may cause undesired operation.

FCC Radiation Exposure Statement:

This equipment complies with FCC radiation exposure limits set forth for an uncontrolled environment. This equipment should be installed and operated with minimum distance 20cm between the radiator & your body. For product available in the USA/Canada market, only channel 1~11 can be operated. Selection of other channels is not possible. This device and its antenna(s) must not be co-located or operating in conjunction with any other antenna or transmitter.

R&TTE Compliance Statement

This equipment complies with all the requirements of DIRECTIVE 1999/5/EC OF THE EUROPEAN PARLIAMENT AND THE COUNCIL of March 9, 1999 on radio equipment and telecommunication terminal equipment and the mutual recognition of their conformity (R&TTE). The R&TTE Directive repeals and replaces in the directive 98/13/EEC (Telecommunications Terminal Equipment and Satellite Earth Station Equipment) As of April 8, 2000.

Safety

This equipment is designed with the utmost care for the safety of those who install and use it. However, special attention must be paid to the dangers of electric shock and static electricity when working with electrical equipment. All guidelines of this and of the computer manufacture must therefore be allowed at all times to ensure the safe use of the equipment.

EU Countries Intended for Use

The ETSI version of this device is intended for home and office use in Austria, Belgium, Bulgaria, Cyprus, Czech, Denmark, Estonia, Finland, France, Germany, Greece, Hungary, Ireland, Italy, Latvia, Lithuania, Luxembourg, Malta, Netherlands, Poland, Portugal, Romania, Slovakia, Slovenia, Spain, Sweden, Turkey, and United Kingdom. The ETSI version of this device is also authorized for use in EFTA member states: Iceland, Liechtenstein, Norway, and Switzerland.

EU Countries Not Intended for Use

None

EU Declaration of Conformity

- English:** This equipment is in compliance with the essential requirements and other relevant provisions of Directive 2006/95/EC, 2011/65/EC.
- Français:** Cet équipement est conforme aux exigences essentielles et autres dispositions de la directive 2006/95/CE, 2011/65/CE.
- Čeština:** Toto zařízení je v souladu se základními požadavky a ostatními příslušnými ustanoveními směrnic 2006/95/ES, 2011/65/ES.
- Polski:** Urządzenie jest zgodne z ogólnymi wymaganiami oraz szczególnymi warunkami określonymi Dyrektywą UE 2006/95/EC, 2011/65/EC..
- Română:** Acest echipament este în conformitate cu cerințele esențiale și alte prevederi relevante ale Directivei 2006/95/CE, 2011/65/CE.
- Русский:** Это оборудование соответствует основным требованиям и положениям Директивы 2006/95/EC, 2011/65/EC.
- Magyar:** Ez a berendezés megfelel az alapvető követelményeknek és más vonatkozó irányelveknek (2006/95/EK, 2011/65/EK).
- Türkçe:** Bu cihaz 2006/95/EC, 2011/65/EC direktifleri zorunlu istekler ve diğer hükümlerle ile uyumludur.
- Українська:** Обладнання відповідає вимогам і умовам директиви 2006/95/EC, 2011/65/EC.
- Slovenčina:** Toto zariadenie spĺňa základné požiadavky a ďalšie príslušné ustanovenia smerníc 2006/95/ES, 2011/65/ES.
- Deutsch:** Dieses Gerät erfüllt die Voraussetzungen gemäß den Richtlinien 2006/95/EC, 2011/65/EC.
- Español:** El presente equipo cumple los requisitos esenciales de la Directiva 2006/95/EC, 2011/65/EC.
- Italiano:** Questo apparecchio è conforme ai requisiti essenziali e alle altre disposizioni applicabili della Direttiva 2006/95/CE, 2011/65/CE.
- Nederlands:** Dit apparaat voldoet aan de essentiële eisen en andere van toepassing zijnde bepalingen van richtlijn 2006/95/EC, 2011/65/EC..
- Português:** Este equipamento cumpre os requisitos essenciais da Directiva 2006/95/EC, 2011/65/EC.
- Norsk:** Dette utstyret er i samsvar med de viktigste kravene og andre relevante regler i Direktiv 2006/95/EC, 2011/65/EC.
- Svenska:** Denna utrustning är i överensstämmelse med de väsentliga kraven och övriga relevanta bestämmelser i direktiv 2006/95/EG, 2011/65/EG.
- Dansk:** Dette udstyr er i overensstemmelse med de væsentligste krav og andre relevante forordninger i direktiv 2006/95/EC, 2011/65/EC.
- suomen kieli:** Tämä laite täyttää direktiivien 2006/95/EY, 2011/65/EY oleelliset vaatimukset ja muut asiaankuuluvat määräykset.

FOR USE IN

AT	BE	CY	CZ	DK	EE	FI	FR
DE	GR	HU	IE	IT	LV	LT	LU
MT	NL	PL	PT	SK	SI	ES	SE
GB	IS	LI	NO	CH	BG	RO	TR



WEEE Directive & Product Disposal



At the end of its serviceable life, this product should not be treated as household or general waste. It should be handed over to the applicable collection point for the recycling of electrical and electronic equipment, or returned to the supplier for disposal.

Notice According to GNU General Public License Version 2

This product includes software that is subject to the GNU General Public License version 2. The program is free software and distributed without any warranty of the author. We offer, valid for at least three years, to give you, for a charge no more than the costs of physically performing source distribution, a complete machine-readable copy of the corresponding source code.

Das Produkt beinhaltet Software, die den Bedingungen der GNU/GPL-Version 2 unterliegt. Das Programm ist eine sog. „Free Software“, der Autor stellt das Programm ohne irgendeine Gewährleistungen zur Verfügung. Wir bieten Ihnen für einen Zeitraum von drei Jahren an, eine vollständige maschinenlesbare Kopie des Quelltextes der Programme zur Verfügung zu stellen – zu nicht höheren Kosten als denen, die durch den physikalischen Kopiervorgang anfallen.

GNU GENERAL PUBLIC LICENSE

Version 2, June 1991

Copyright (C) 1989, 1991 Free Software Foundation, Inc. 51 Franklin Street, Fifth Floor, Boston, MA 02110-1301, USA
Everyone is permitted to copy and distribute verbatim copies of this license document, but changing it is not allowed.

Preamble

The licenses for most software are designed to take away your freedom to share and change it. By contrast, the GNU General Public License is intended to guarantee your freedom to share and change free software--to make sure the software is free for all its users. This General Public License applies to most of the Free Software Foundation's software and to any other program whose authors commit to using it. (Some other Free Software Foundation software is covered by the GNU Lesser General Public License instead.) You can apply it to your programs, too.

When we speak of free software, we are referring to freedom, not price. Our General Public Licenses are designed to make sure that you have the freedom to distribute copies of free software (and charge for this service if you wish), that you receive source code or can get it if you want it, that you can change the software or use pieces of it in new free programs; and that you know you can do these things.

To protect your rights, we need to make restrictions that forbid anyone to deny you these rights or to ask you to surrender the rights. These restrictions translate to certain responsibilities for you if you distribute copies of the software, or if you modify it.

For example, if you distribute copies of such a program, whether gratis or for a fee, you must give the recipients all the rights that you have. You must make sure that they, too, receive or can get the source code. And you must show them these terms so they know their rights.

We protect your rights with two steps: (1) copyright the software, and (2) offer you this license which gives you legal permission to copy, distribute and/or modify the software.

Also, for each author's protection and ours, we want to make certain that everyone understands that there is no warranty for this free software. If the software is modified by someone else and passed on, we want its recipients to know that what they have is not the original, so that any problems introduced by others will not reflect on the original authors' reputations.

Finally, any free program is threatened constantly by software patents. We wish to avoid the danger that redistributors of a free program will individually obtain patent licenses, in effect making the program proprietary. To prevent this, we have made it clear that any patent must be licensed for everyone's free use or not licensed at all.

The precise terms and conditions for copying, distribution and modification follow.

TERMS AND CONDITIONS FOR COPYING, DISTRIBUTION AND MODIFICATION

0. This License applies to any program or other work which contains a notice placed by the copyright holder saying it may be distributed under the terms of this General Public License. The "Program", below, refers to any such program or work, and a "work based on the Program" means either the Program or any derivative work under copyright law: that is to say, a work containing the Program or a portion of it, either verbatim or with modifications and/or translated into another language. (Hereinafter, translation is included without limitation in the term "modification".) Each licensee is addressed as "you".

Activities other than copying, distribution and modification are not covered by this License; they are outside its scope. The act of running the Program is not restricted, and the output from the Program is covered only if its contents constitute a work based on the Program (independent of having been made by running the Program). Whether that is true depends on what the Program does.

1. You may copy and distribute verbatim copies of the Program's source code as you receive it, in any medium, provided that you conspicuously and appropriately publish on each copy an appropriate copyright notice and disclaimer of warranty; keep

intact all the notices that refer to this License and to the absence of any warranty; and give any other recipients of the Program a copy of this License along with the Program.

You may charge a fee for the physical act of transferring a copy, and you may at your option offer warranty protection in exchange for a fee.

2. You may modify your copy or copies of the Program or any portion of it, thus forming a work based on the Program, and copy and distribute such modifications or work under the terms of Section 1 above, provided that you also meet all of these conditions:

- a) You must cause the modified files to carry prominent notices stating that you changed the files and the date of any change.
- b) You must cause any work that you distribute or publish, that in whole or in part contains or is derived from the Program or any part thereof, to be licensed as a whole at no charge to all third parties under the terms of this License.
- c) If the modified program normally reads commands interactively when run, you must cause it, when started running for such interactive use in the most ordinary way, to print or display an announcement including an appropriate copyright notice and a notice that there is no warranty (or else, saying that you provide a warranty) and that users may redistribute the program under these conditions, and telling the user how to view a copy of this License. (Exception: if the Program itself is interactive but does not normally print such an announcement, your work based on the Program is not required to print an announcement.)

These requirements apply to the modified work as a whole. If identifiable sections of that work are not derived from the Program, and can be reasonably considered independent and separate works in themselves, then this License, and its terms, do not apply to those sections when you distribute them as separate works. But when you distribute the same sections as part of a whole which is a work based on the Program, the distribution of the whole must be on the terms of this License, whose permissions for other licensees extend to the entire whole, and thus to each and every part regardless of who wrote it.

Thus, it is not the intent of this section to claim rights or contest your rights to work written entirely by you; rather, the intent is to exercise the right to control the distribution of derivative or collective works based on the Program.

In addition, mere aggregation of another work not based on the Program with the Program (or with a work based on the Program) on a volume of a storage or distribution medium does not bring the other work under the scope of this License.

3. You may copy and distribute the Program (or a work based on it, under Section 2) in object code or executable form under the terms of Sections 1 and 2 above provided that you also do one of the following:

- a) Accompany it with the complete corresponding machine-readable source code, which must be distributed under the terms of Sections 1 and 2 above on a medium customarily used for software interchange; or,
- b) Accompany it with a written offer, valid for at least three years, to give any third party, for a charge no more than your cost of physically performing source distribution, a complete machine-readable copy of the corresponding source code, to be distributed under the terms of Sections 1 and 2 above on a medium customarily used for software interchange; or,
- c) Accompany it with the information you received as to the offer to distribute corresponding source code. (This alternative is allowed only for noncommercial distribution and only if you received the program in object code or executable form with such an offer, in accord with Subsection b above.)

The source code for a work means the preferred form of the work for making modifications to it. For an executable work, complete source code means all the source code for all modules it contains, plus any associated interface definition files, plus the scripts used to control compilation and installation of the executable. However, as a special exception, the source code distributed need not include anything that is normally distributed (in either source or binary form) with the major components (compiler, kernel, and so on) of the operating system on which the executable runs, unless that component itself accompanies the executable.

If distribution of executable or object code is made by offering access to copy from a designated place, then offering equivalent access to copy the source code from the same place counts as distribution of the source code, even though third parties are not compelled to copy the source along with the object code.

4. You may not copy, modify, sublicense, or distribute the Program except as expressly provided under this License. Any attempt otherwise to copy, modify, sublicense or distribute the Program is void, and will automatically terminate your rights under this License. However, parties who have received copies, or rights, from you under this License will not have their licenses terminated so long as such parties remain in full compliance.

5. You are not required to accept this License, since you have not signed it. However, nothing else grants you permission to modify or distribute the Program or its derivative works. These actions are prohibited by law if you do not accept this License. Therefore, by modifying or distributing the Program (or any work based on the Program), you indicate your acceptance of this License to do so, and all its terms and conditions for copying, distributing or modifying the Program or works based on it.

6. Each time you redistribute the Program (or any work based on the Program), the recipient automatically receives a license from the original licensor to copy, distribute or modify the Program subject to these terms and conditions. You may not impose any further restrictions on the recipients' exercise of the rights granted herein. You are not responsible for enforcing compliance by third parties to this License.

7. If, as a consequence of a court judgment or allegation of patent infringement or for any other reason (not limited to patent issues), conditions are imposed on you (whether by court order, agreement or otherwise) that contradict the conditions of this License, they do not excuse you from the conditions of this License. If you cannot distribute so as to satisfy simultaneously your obligations under this License and any other pertinent obligations, then as a consequence you may not distribute the Program at all. For example, if a patent license would not permit royalty-free redistribution of the Program by all those who receive copies directly or indirectly through you, then the only way you could satisfy both it and this License would be to refrain entirely from distribution of the Program.

If any portion of this section is held invalid or unenforceable under any particular circumstance, the balance of the section is intended to apply and the section as a whole is intended to apply in other circumstances.

It is not the purpose of this section to induce you to infringe any patents or other property right claims or to contest validity of any such claims; this section has the sole purpose of protecting the integrity of the free software distribution system, which is implemented by public license practices. Many people have made generous contributions to the wide range of software distributed through that system in reliance on consistent application of that system; it is up to the author/donor to decide if he or she is willing to distribute software through any other system and a licensee cannot impose that choice.

This section is intended to make thoroughly clear what is believed to be a consequence of the rest of this License.

8. If the distribution and/or use of the Program is restricted in certain countries either by patents or by copyrighted interfaces, the original copyright holder who places the Program under this License may add an explicit geographical distribution limitation excluding those countries, so that distribution is permitted only in or among countries not thus excluded. In such case, this License incorporates the limitation as if written in the body of this License.

9. The Free Software Foundation may publish revised and/or new versions of the General Public License from time to time. Such new versions will be similar in spirit to the present version, but may differ in detail to address new problems or concerns.

Each version is given a distinguishing version number. If the Program specifies a version number of this License which applies to it and "any later version", you have the option of following the terms and conditions either of that version or of any later version published by the Free Software Foundation. If the Program does not specify a version number of this License, you may choose any version ever published by the Free Software Foundation.

10. If you wish to incorporate parts of the Program into other free programs whose distribution conditions are different, write to the author to ask for permission. For software which is copyrighted by the Free Software Foundation, write to the Free Software Foundation; we sometimes make exceptions for this. Our decision will be guided by the two goals of preserving the free status of all derivatives of our free software and of promoting the sharing and reuse of software generally.

NO WARRANTY

11. BECAUSE THE PROGRAM IS LICENSED FREE OF CHARGE, THERE IS NO WARRANTY FOR THE PROGRAM, TO THE EXTENT PERMITTED BY APPLICABLE LAW. EXCEPT WHEN OTHERWISE STATED IN WRITING THE COPYRIGHT HOLDERS AND/OR OTHER PARTIES PROVIDE THE PROGRAM "AS IS" WITHOUT WARRANTY OF ANY KIND, EITHER EXPRESSED OR IMPLIED, INCLUDING, BUT NOT LIMITED TO, THE IMPLIED WARRANTIES OF MERCHANTABILITY AND FITNESS FOR A PARTICULAR PURPOSE. THE ENTIRE RISK AS TO THE QUALITY AND PERFORMANCE OF THE PROGRAM IS WITH YOU. SHOULD THE PROGRAM PROVE DEFECTIVE, YOU ASSUME THE COST OF ALL NECESSARY SERVICING, REPAIR OR CORRECTION.

12. IN NO EVENT UNLESS REQUIRED BY APPLICABLE LAW OR AGREED TO IN WRITING WILL ANY COPYRIGHT HOLDER, OR ANY OTHER PARTY WHO MAY MODIFY AND/OR REDISTRIBUTE THE PROGRAM AS PERMITTED ABOVE, BE LIABLE TO YOU FOR DAMAGES, INCLUDING ANY GENERAL, SPECIAL, INCIDENTAL OR CONSEQUENTIAL DAMAGES ARISING OUT OF THE USE OR INABILITY TO USE THE PROGRAM (INCLUDING BUT NOT LIMITED TO LOSS OF DATA OR DATA BEING RENDERED INACCURATE OR LOSSES SUSTAINED BY YOU OR THIRD PARTIES OR A FAILURE OF THE PROGRAM TO OPERATE WITH ANY OTHER PROGRAMS), EVEN IF SUCH HOLDER OR OTHER PARTY HAS BEEN ADVISED OF THE POSSIBILITY OF SUCH DAMAGES.



ΣDIMAX
NETWORKING PEOPLE TOGETHER

Edimax Technology Co., Ltd.
No.3, Wu-Chuan 3rd Road, Wu-Gu,
New Taipei City 24891, Taiwan

Edimax Technology Europe B.V.
Nijverheidsweg 25 5683 CJ Best
The Netherlands

Edimax Computer Company
3350 Scott Blvd., Bldg.15 Santa Clara,
CA 95054, USA

www.edimax.com