

Smart WLAN Manager

User Manual

May 2007
Version 1.00

Business Class Networking

Table of Contents

Table of Contents	2
Introduction	4
System Requirement	4
Getting Started.....	4
Installing the Smart WLAN Manager	5
Discovering the Switch and AP	7
Using the Smart WLAN Manager	10
Understanding the Screen Layout	10
Discovering Devices.....	11
Polling Information	11
Save to Database	11
Clear Database.....	12
Modify the Preference	12
Global Setting	12
Default Parameters.....	13
Mail Alert	13
Syslog	14
Modifying the Device Password	15
Modifying the Device System Key	16
Backup the Database	16
Restore the Database.....	16
Searching the Switch.....	17
Configure the Wireless System	18
Configure the Wireless Switch	18
System Configuration	18
Anti-Rogue Configuration.....	19
Port Mapping Configuration.....	19
Configure the Access Point individually.....	20
Basic Configuration	20
Wireless Configuration.....	21
Advanced Configuration.....	23
Mac Filter Configuration.....	24

Configure the Access Point by Group	25
Create a Group Template	25
Edit a Group Template.....	27
Management	29
Monitoring	29
Monitoring AP and Wireless Switch by List.....	29
Monitoring AP and Wireless Switch by Tree	31
Monitoring AP and Wireless Switch by Topology	32
Monitoring Clients.....	34
Monitoring Summary.....	34
TROUBLESHOOTING	錯誤! 尚未定義書籤。
Utilization	36
Utilization>AP Users.....	37
Utilization>AP Traffic	38
Utilization>Client Info.	39
Utilization>Load Balance	40
Firmware Upgrade	41
Log	42
Cold Start:.....	43
Factory reset.....	44

Introduction

The **Smart WLAN Manager** is a convenient tool to manage the configuration of your network from a central computer. With **Smart WLAN Manager** there is no need to configure D-Link DWL-3140AP Wireless Access Points individually.

System Requirement

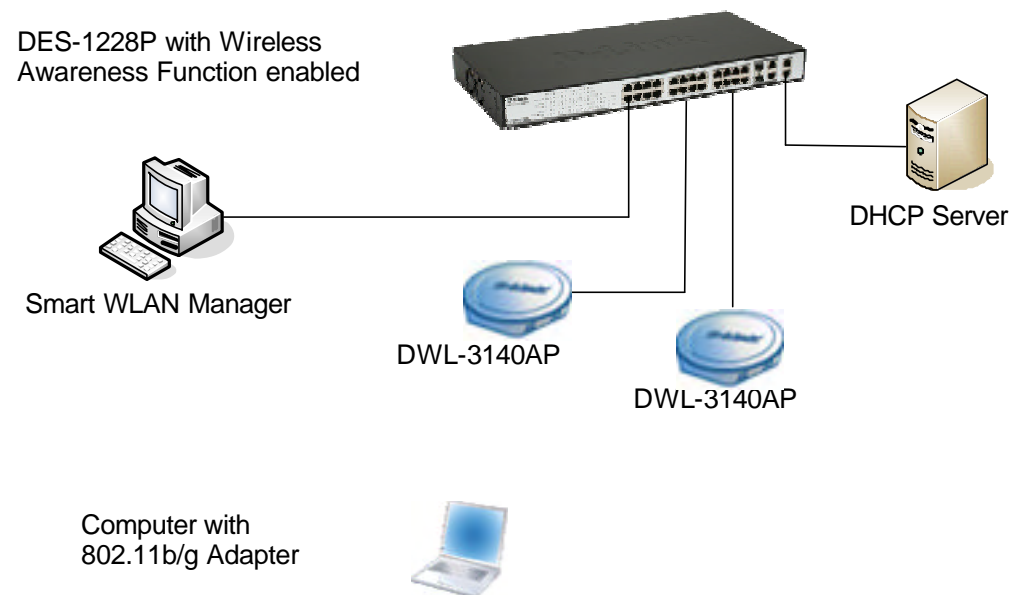
Suggested Specifications for Smart WLAN Manager installation:

- A PC, Notebook with installed network adapter
- Supported OS: Windows 2000 or XP

Note: The performance of wired link is better than wireless link for each computer running AP Manager. Use the wired link to manage the Access Point is recommended.

Getting Started

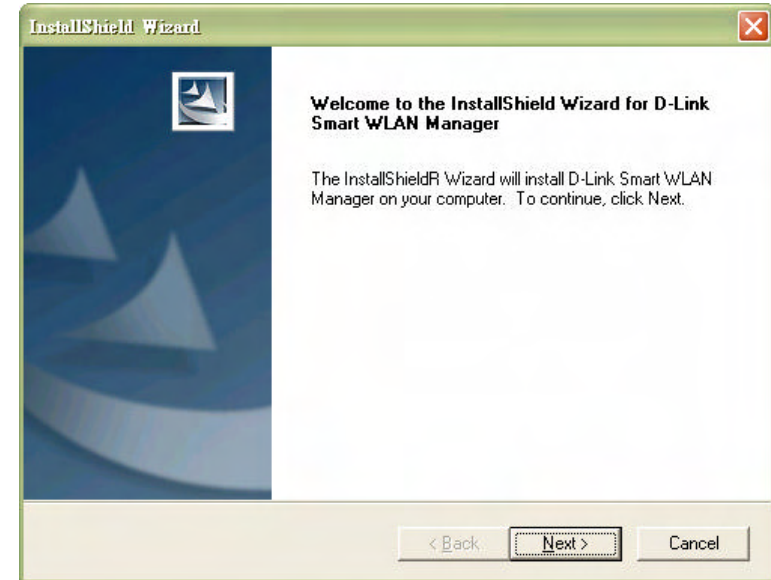
Please prepare your network environment as the topology below. Switch (DES-1228P), Access Point (DWL-3140AP), and the DHCP server need to be in the same IP domain; the PC for Smart WLAN Manager installation can connect the switch directly or via Internet.



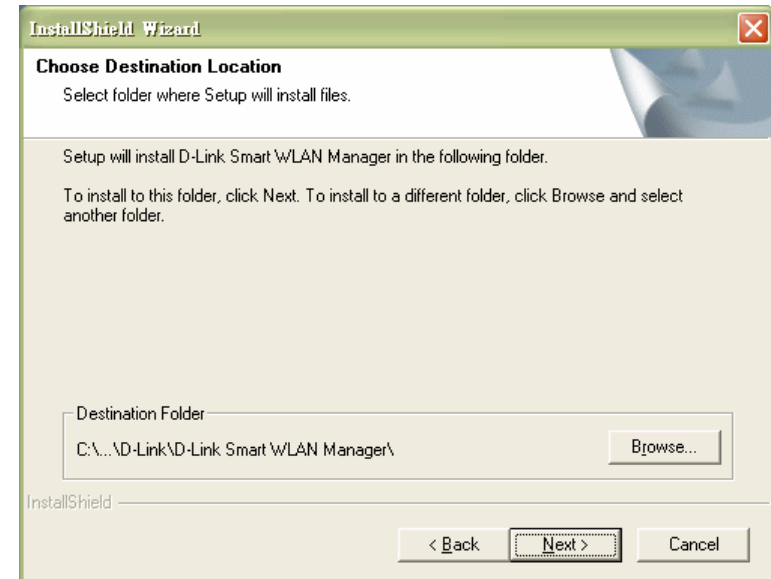
Installing the Smart WLAN Manager

Please do following steps to install the Smart WLAN Manager:

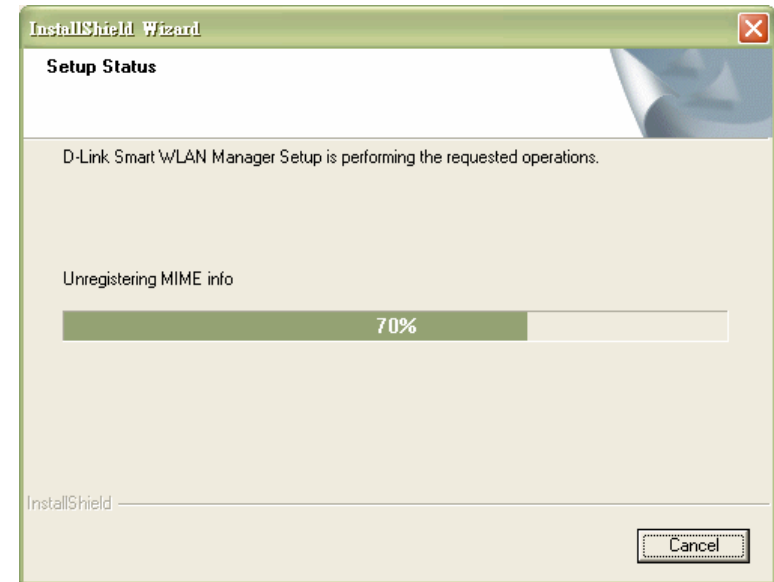
Step 1. Insert the CD and execute the “setup.exe” program. The InstallShield Wizard will pop out as below:



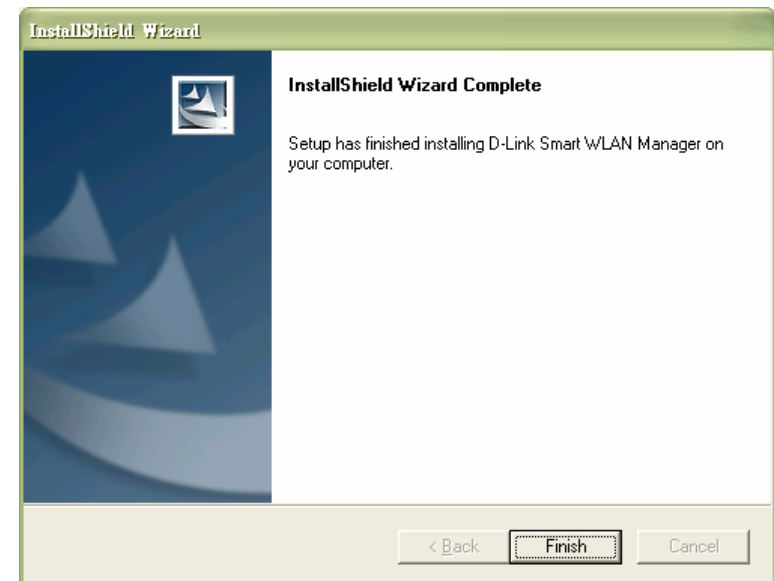
Step 2. Choose the destination folder you want to install the program and click “Next”.



Step 3. The program will perform the installation automatically.



Step 4. Click “Finish” to complete the installation.




Discovering the Switch and AP

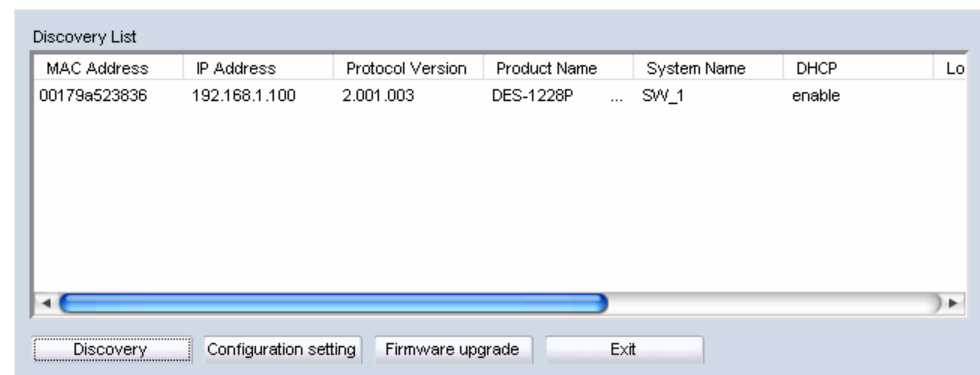
To launch the Smart WLAN Manager:

- Go to the **Start Menu**
- Select **Programs**
- Select D-Link Smart WLAN Manager

Click “OK” (There’s no default password).

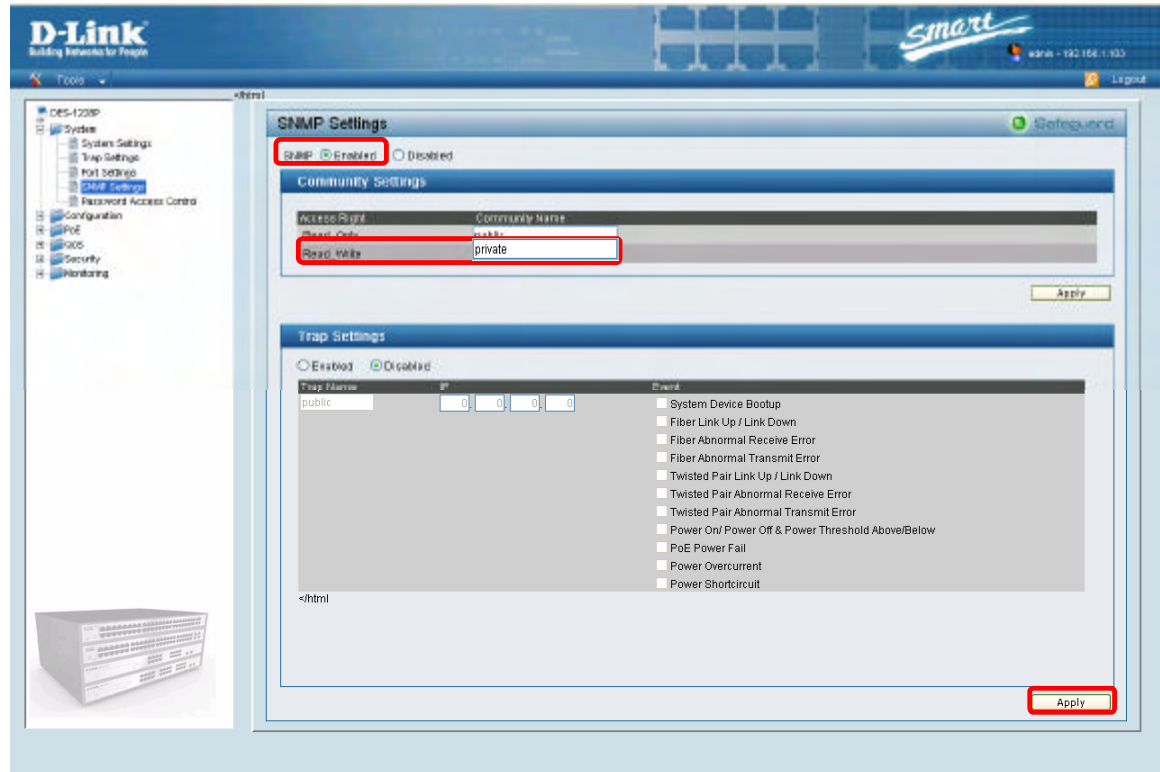


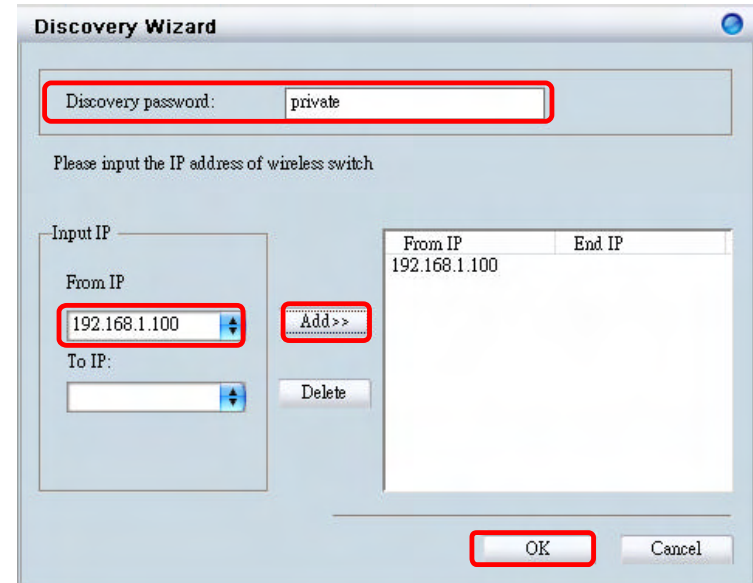

Choose **Tools>Switch Discover Utility** or directly press the icon “”, the Discovery List window will pop up:




Launch the web browser on PC, and connect to switch by the IP address found (default password: **admin**). Make sure the firmware version of DES-1228P is at least 1.20.03.

Make sure the SNMP read_write community is “private” (default value) and enable the function.

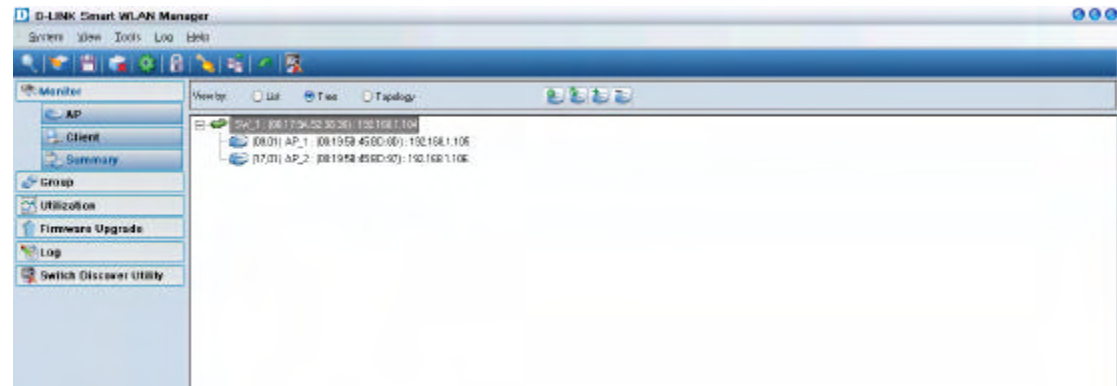


On the Smart WLAN Manager, choose **Tools**→**Discovery Wizard** or click the icon “

From IP	End IP
192.168.1.100	192.168.1.100

In Monitor>Tree, right click the newly found AP and choose “Save to Database (

Note: For detailed connection configuration, please also refer to the Configuration Guide.

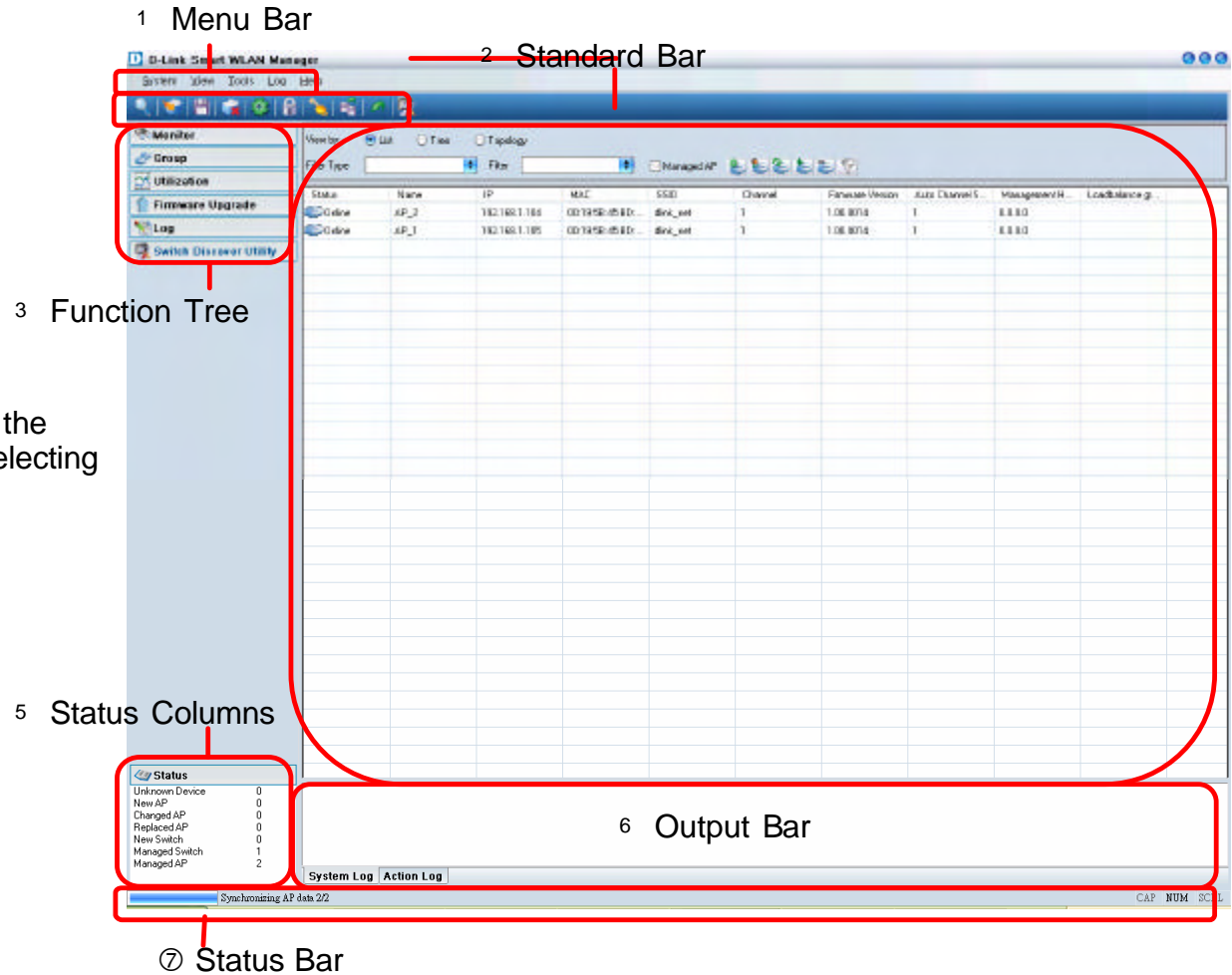


Using the Smart WLAN Manager

Understanding the Screen Layout

1. Menu Bar
2. Standard Bar
3. Function Tree
4. Database Columns
5. Status Columns
6. Output Bar
7. Status Bar

For maximum window view, user can disable the *standard bar*, *output bar*, and *status bar* by selecting the options of **View** in the menu bar.



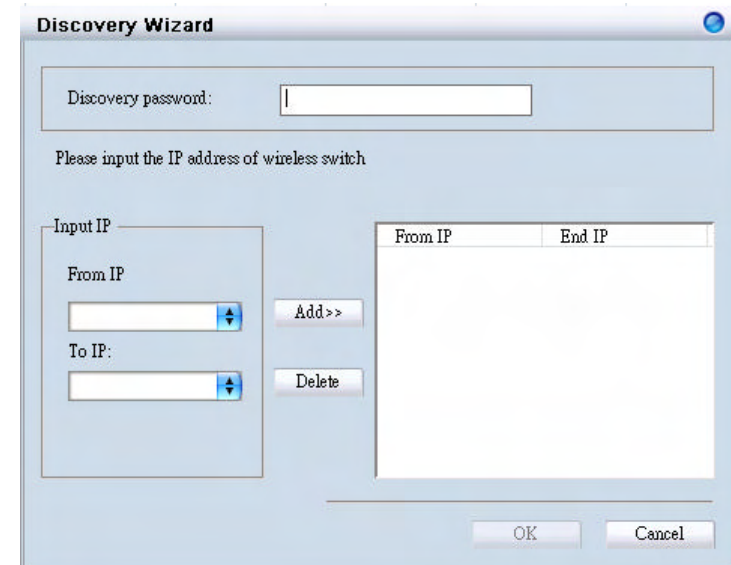
Discovering Devices



Click the **Discovery Wizard** icon or choose **Tools>Discovery Wizard** to discover the devices available on the network.

Discovery password - The discovery password needs to be consistent with the SNMP read_write community name

Input IP - Enter the IP address of the switch. User can either input a specific IP address (fill in "From IP"), or a range of IP addresses (fill in both "From IP" and "To IP")



Polling Information



By default the Smart WLAN Manager will scan the network every 15 seconds. Click the Start Polling icon to scan the network immediately.

Save to Database



Click the **Save to Database** icon or choose **System>Save all to database** to save all the devices found out. You can all use the hotkey (**Ctrl +S**) to achieve the same results.

Clear Database



Click the **Clear Database** icon or choose **System**→**Clear all from database** to clear all the records saved.

Modify the Preference



Click the **Preference** icon or choose **Tools**>**Preference** to modify the preference.

Global Setting

The *Global Setting* allows you to change the monitoring parameters and the log levels.

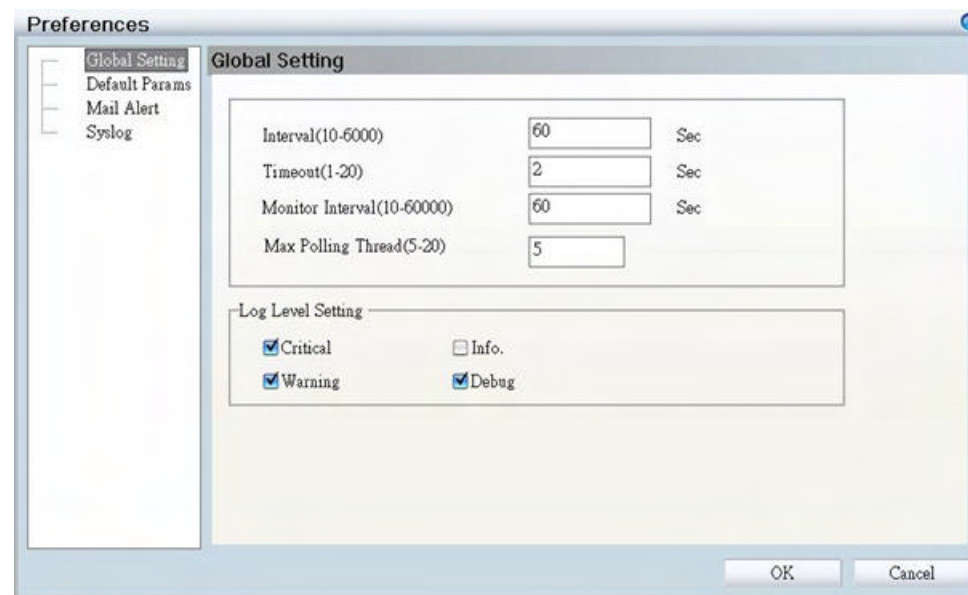
Interval - The time needs to wait for the next polling. The range is from 10 to 6000 seconds, and default value is **60**.

TimeOut - The waiting time for the device to respond, fail to response in time will be determined to be in *offline* status. The range is from 1 to 20 seconds, and default value is **2**.

Monitor interval - The period to scan for devices. The range is from 10 to 60000 seconds, and default value is **60**.

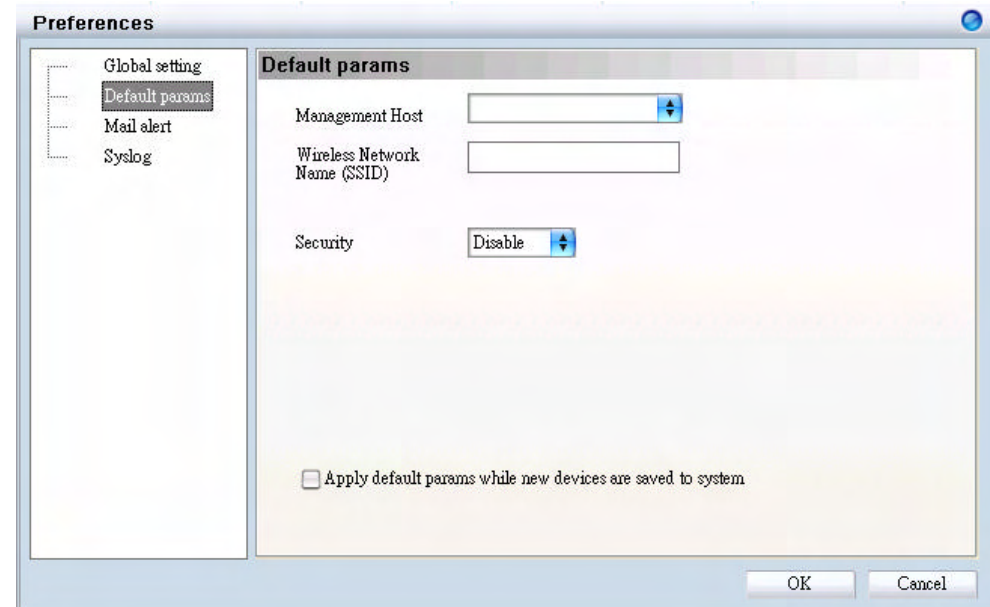
Max. Polling thread – The maximum devices polled at one time. The default value is **5**.

In *Log Level Setting* users can define what levels of events he wants to log. The default levels are Critical, Warning, and Debug.



Default Parameters

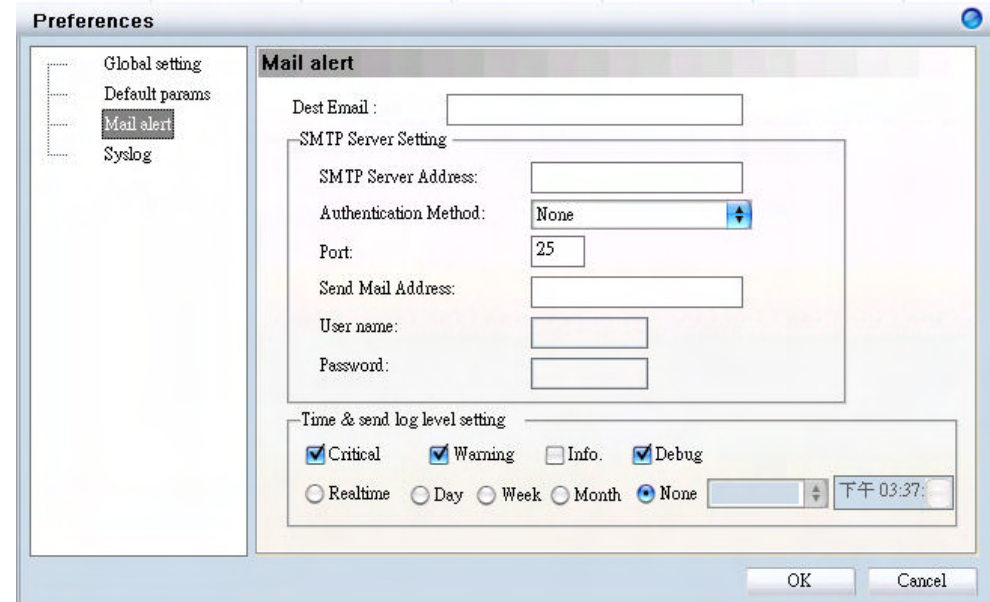
In *Default Params* users can configure the SSID and security to specific managed AP, or to create a default profile for all new devices by checking the option.



Mail Alert

In *Mail alert* user can configure when an event happens, the log message will be sent from certain SMTP (mail) server to specific email address. You can also specify if you want to send the email in real time, or to accumulate the messages and send them out by daily, weekly, or monthly.

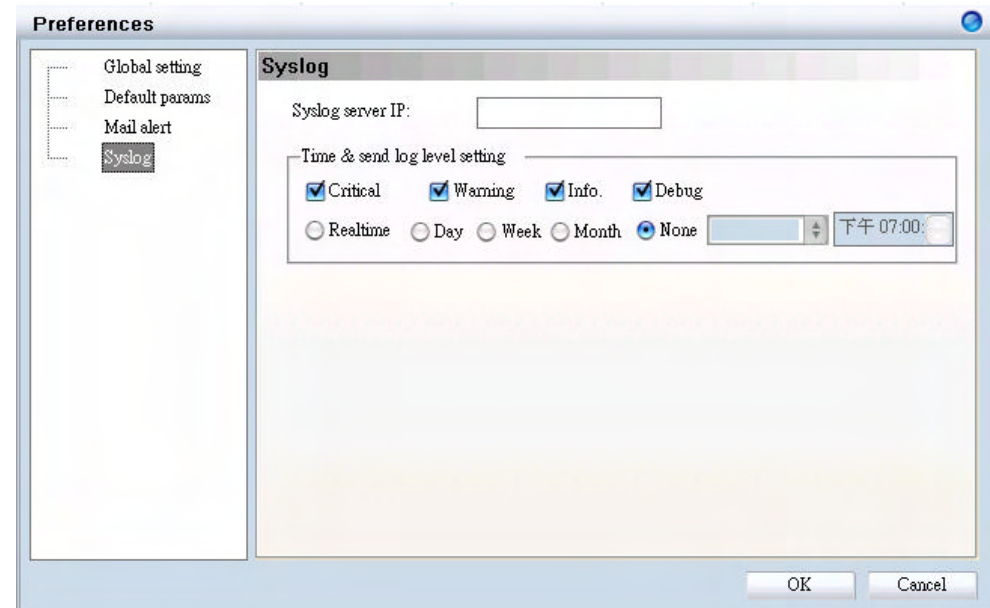
The default message types to be sent are *critical*, *warning*, and *debug*.



Syslog

In *Syslog* user is allowed to set the IP address of syslog server, the level of events to be sent to the syslog server, and when to send out the message

The default setting for logs to be recorded are all types (*critical*, *warning*, *info*, and *debug*).



Modifying the Device System Key



Click the **Modify All Device System Key** icon or to choose **Tools**→**System Key Manager** to modify the device system key.

User can assign the system key is to examine the validity of the access point. Once the key is configured, it needs to be identical on both access point and wireless switch for normal operation.



Backup the Database



Click the **Backup Database** icon or choose **System**→**Backup database** to save the current database to the PC.

Restore the Database



Click the **Restore Database** icon or choose **System**→**Restore database** to open the saved database from the PC.

Searching the Switch



Click the **Switch Discovery Utility** icon or choose **Tools**→**Switch Discovery Wizard** to search the available switch.

The *Discovery List* window shows following information of the switch available:

MAC Address - The MAC address of switch

IP Address - The IP address of switch

Product Name - The model name

System Name - The name identifies the switch in the network.

DHCP - The status of DHCP client of switch

Location - The location of the switch

Trap IP - The IP address of sWerver which receives the SNMP Trap message

Subnet Mask - The subnet mask of switch IP address.

Gateway - The IP address of the gateway for switch

MAC Address	IP Address	Protocol Version	Product Name	System Name	DHCP	Lo
00179a523836	192.168.1.100	2.001.003	DES-1228P ...	SW_1	enable	D-L

Selecting the switch and click “Configuration setting”, you can modify some of attributes. Click “Set” when done.

Product name	DES-1228P	MAC Address	00179a523836
IP Address	192 . 168 . 1 . 100	Subnet mask	255 . 255 . 255 . 0
Gateway	192 . 168 . 1 . 1	Trap server	. . 0 . 0 . 0
System name	SW_1	Location	SF
Password			
DHCP	<input checked="" type="radio"/> Enable <input type="radio"/> Disable		
<input type="button" value="Set"/>		<input type="button" value="Cancel"/>	

Configure the Wireless System

Configure the Wireless Switch

In **Monitor>AP**, choose the view by Tree or topology, and double click the wireless switch you want to change the setting, and the configuration windows will pop up.

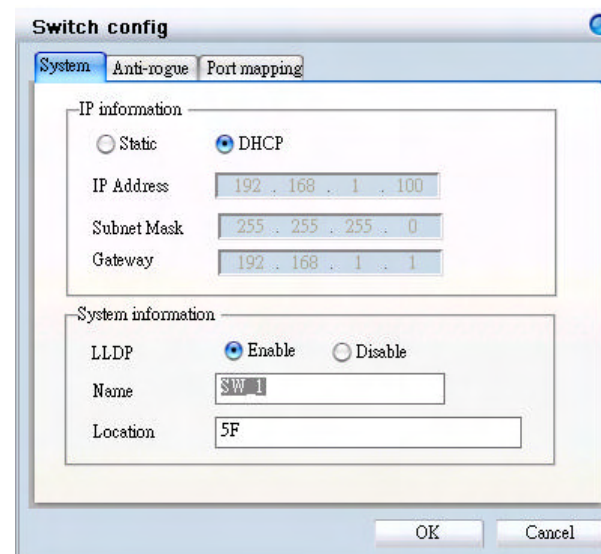
System Configuration

IP Address - Can choose static or dynamic (DHCP) IP address for the wireless switch. When static IP was selected, please manual input IP Address, Subnet Mask and Gateway IP.

LLDP - Select **Enable** or **Disable** the LLDP function. It is needed to enable LLDP for finding the access points.

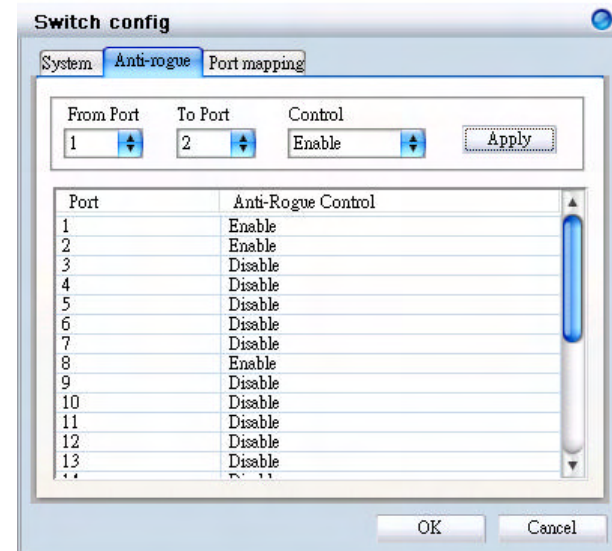
Name - Enter the system name for the wireless switch.

Location - Enter the location of the wireless switch.



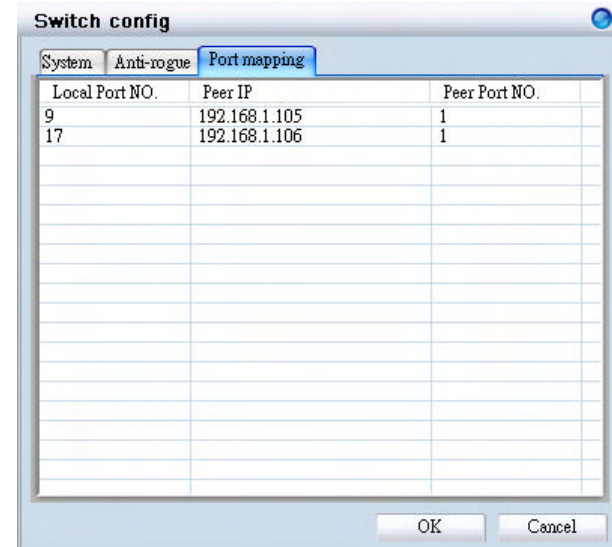
Anti-Rogue Configuration

Configure the ports you want to enable the anti-rogue function. Once it is enabled on a port, switch will check AP with the system key to determine if the it will be authenticated or denied.



Port Mapping Configuration

It shows the ports which access points connect to, and their IP addresses.



Configure the Access Point individually

In **Monitor**→**AP**, double click the AP you want to change the setting, and the configuration windows will pop up.

Basic Configuration

IP Address - Can choose static or dynamic (DHCP) IP address for the wireless switch. When static IP was selected, please manual input IP Address, Subnet Mask and Gateway IP.

Name - User can input the system name for the access point

Connection Limit - Maximum number of clients can be connected. Default value is **60**.

Management Host - Configure the IP address of the Smart WLAN Manager. Default is **none**.

Location - User can input the location of the AP

The screenshot shows a configuration window titled "AP '192.168.1.105' configuration". It has four tabs: "Basic", "Wireless", "Advance", and "MAC filter". The "Basic" tab is active. The window is divided into two main sections. The top section is titled "IP address setting [Warning: don't change these if you're not sure!]" and contains a "LAN IP" label with two radio buttons: "Dynamic IP Address" (which is selected) and "Static IP Address". Below these are three input fields: "IP Address" with the value "192 . 168 . 1 . 105", "Subnet Mask" with "255 . 255 . 255 . 0", and "Gateway" with "192 . 168 . 1 . 1". The bottom section is titled "Other information" and contains five input fields: "Name" with "AP_1", "Connection Limit" with "60", "Management Host" with "0 . 0 . 0 . 0", "Location" with "5F_Left", and "Active clients" with "0". At the bottom right of the window are "OK" and "Cancel" buttons.