

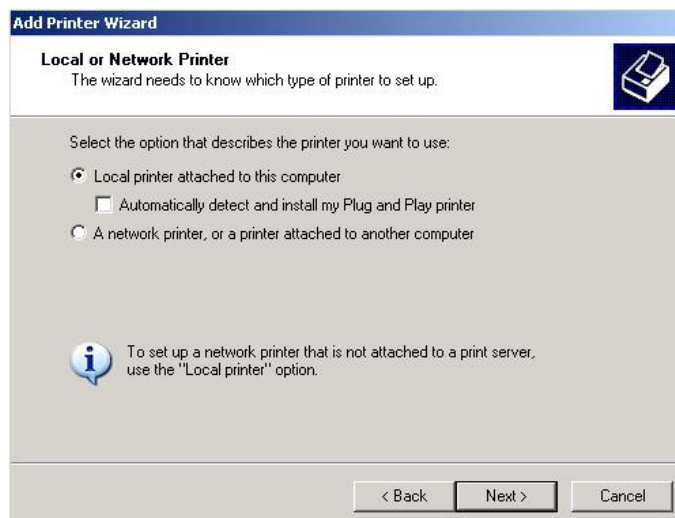
If you are running:

Windows 2000 and XP

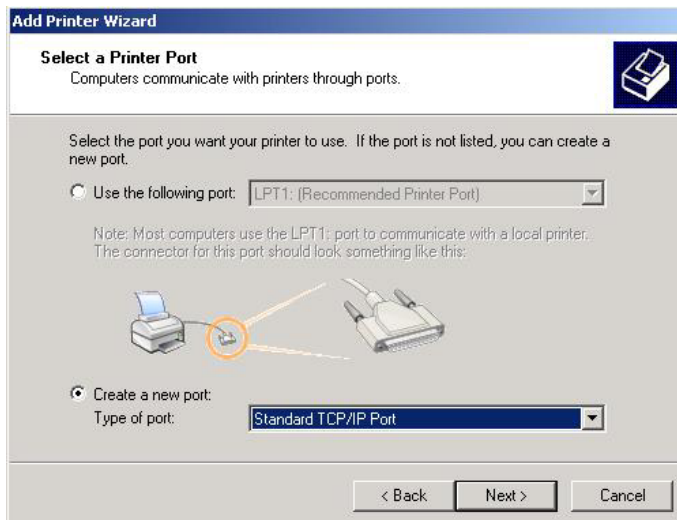
Please note that the installation screen (Method A and Method B) looks a little bit different under different operating system, differing from step 4.

Method A

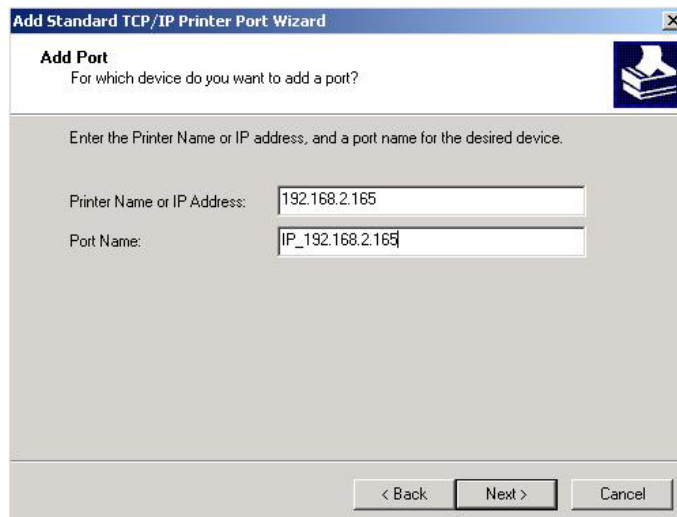
1. Click Start, Settings, Control Panel, and then Printers and Faxes. Click Add Printer.
2. Click Next. Choose Local Printer. Next.



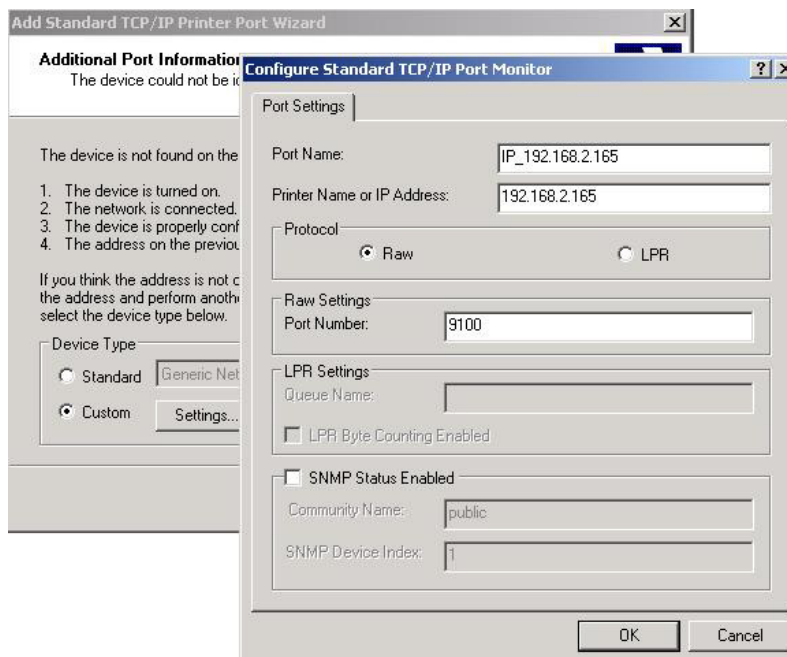
3. Choose New Port.
4. Select Standard TCP/IP Port. Click Next.



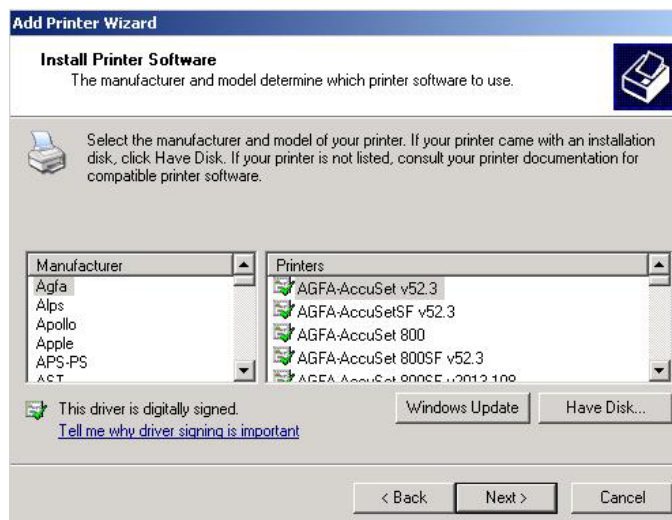
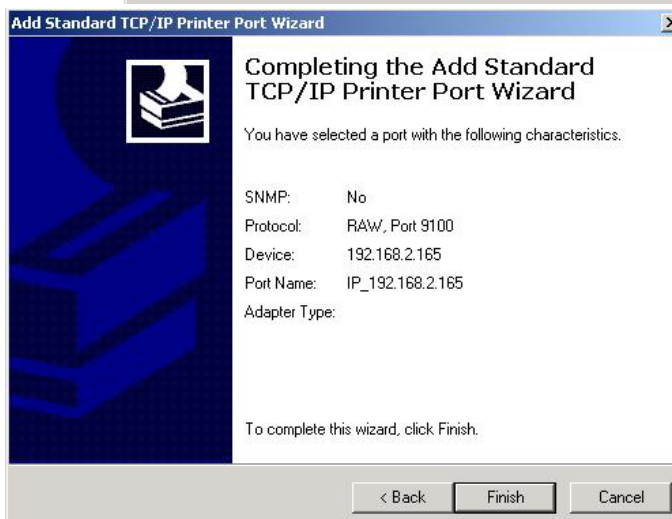
5. IP Address: Please enter the LAN IP Address that the server is connected.
6. Port Name: PrintSrv or any name you wish. Click Next.
7. Click Custom Settings.
8. Click the Raw button. Enter 9100 as Raw Port Number. Click OK.



Multimedia Security Center



9. You can see your settings here. Click Back if you want to change anything. Click Finish if everything is right.
10. Choose your printer from the list of printers. Click Next.
11. Congratulations! Now you've successfully installed the print server.



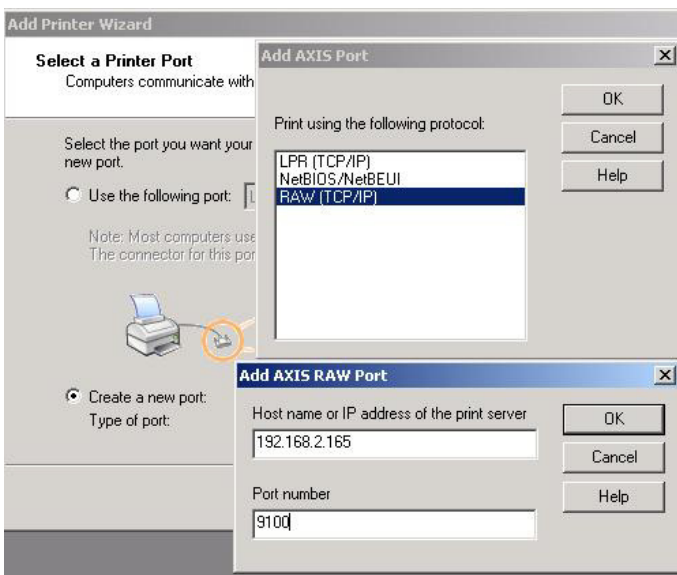
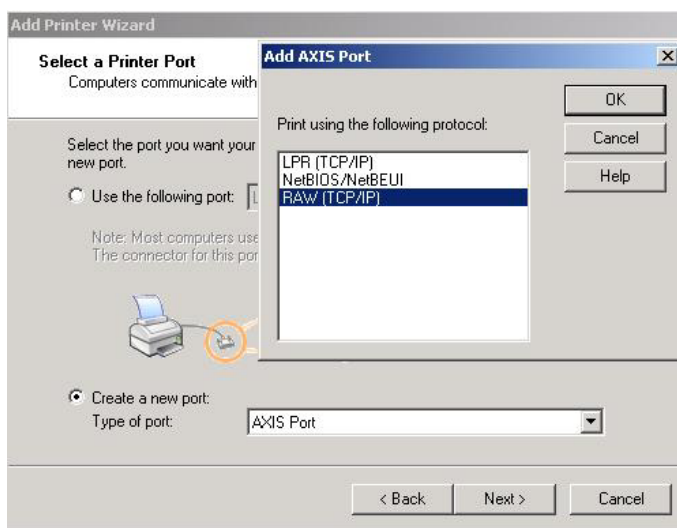
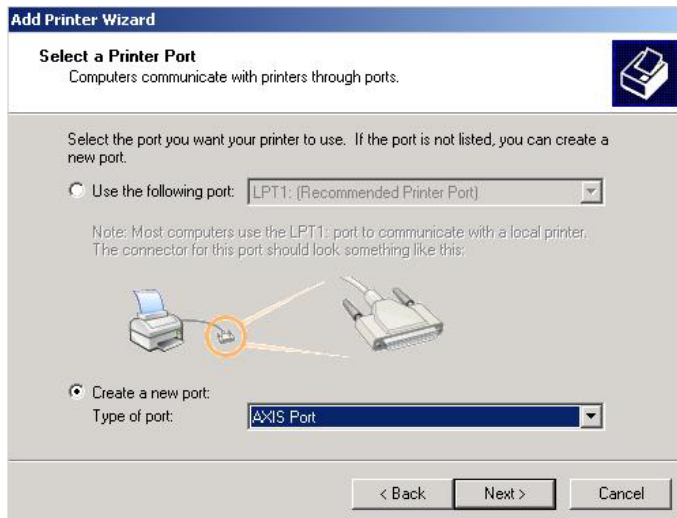
Method B

1~3

The installing screen looks different starting from step four, where you have to specify using TCP/IP protocol. But the underlying principle is the same.

Start -> Control Panel -> Printer and Faxes -> Add Printer -> Local Printer -> Next -> Create New Port -> Choose AXIS Port

4. Click NEXT after AXIS Port.
5. Click RAW TCP/IP. Click OK.



Method B

6. Enter LAN IP address.
7. Enter Port Number, which is 9100. Click OK.
8. Select your printer from the list.

Multimedia Security Center

Add Printer Wizard

Install Printer Software
The manufacturer and model determine which printer software to use.

Select the manufacturer and model of your printer. If your printer came with an installation disk, click Have Disk. If your printer is not listed, consult your printer documentation for compatible printer software.

Manufacturer	Printers
Agfa	AGFA-AccuSet v52.3
Alps	AGFA-AccuSetSF v52.3
Apollo	AGFA-AccuSet 800
Apple	AGFA-AccuSet 800SF v52.3
APS-PS	AGFA-AccuSet 800SF v52.3
ACT	AGFA-AccuSet 800SF v52.3

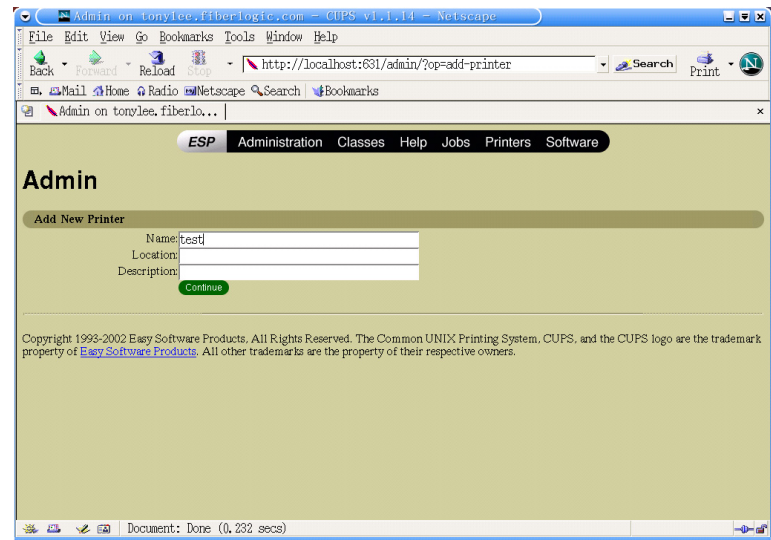
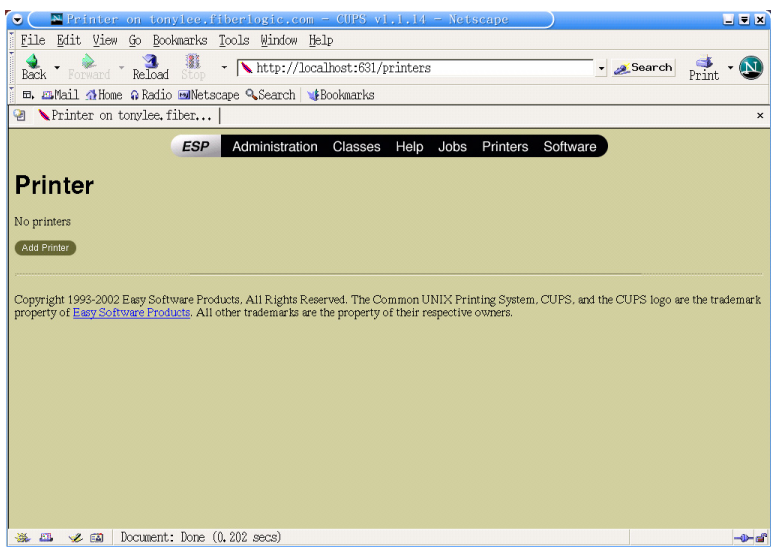
This driver is digitally signed. [Tell me why driver signing is important](#)

Windows Update Have Disk...

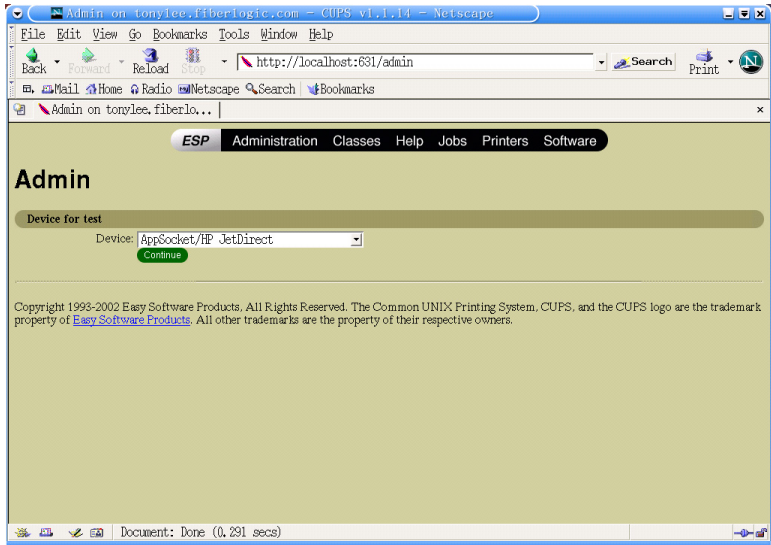
< Back Next > Cancel

If you are running Linux

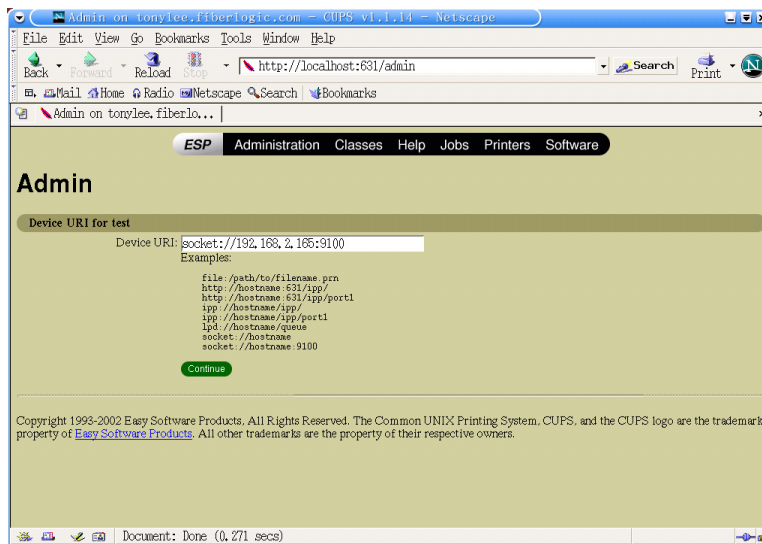
1. Enable CUPS.
2. Enter the default of URL:
<http://localhost:631/printers>.
3. Click ADD PRINTER.
4. Give your printer a name.



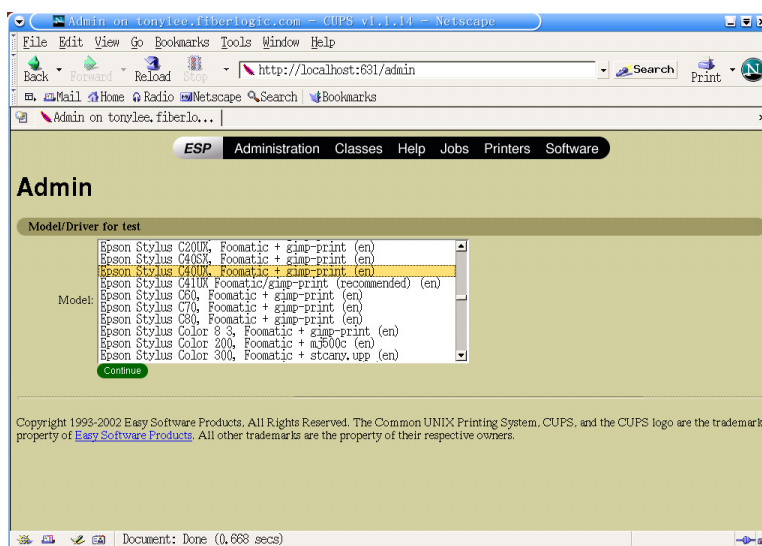
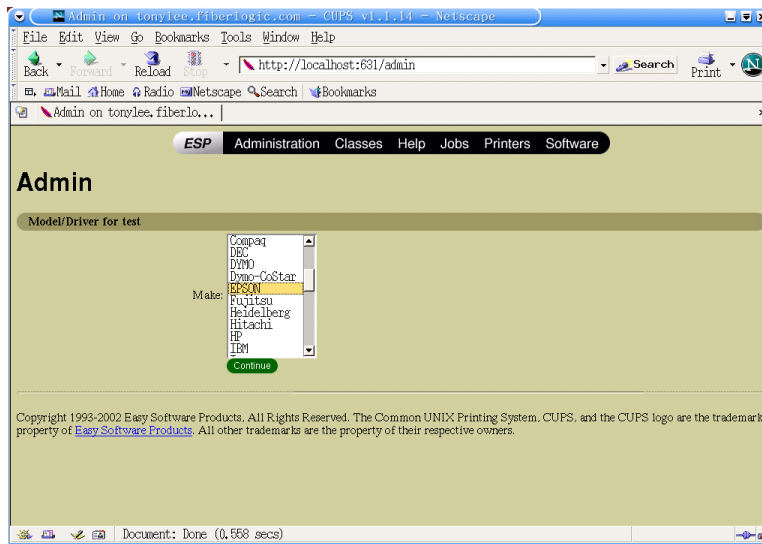
5. Select your printer from the list of device. Click CONTINUE.
6. Device URI is the LAN IP Address and the port number.
7. Click CONTINUE.



Multimedia Security Center

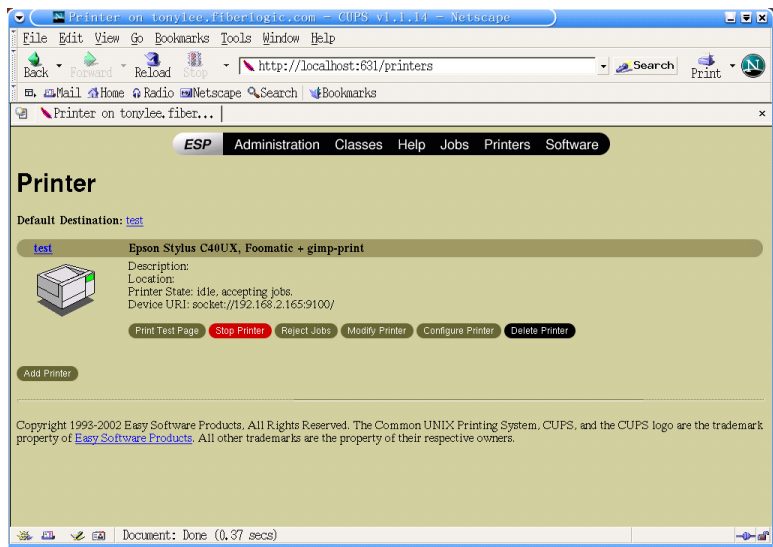
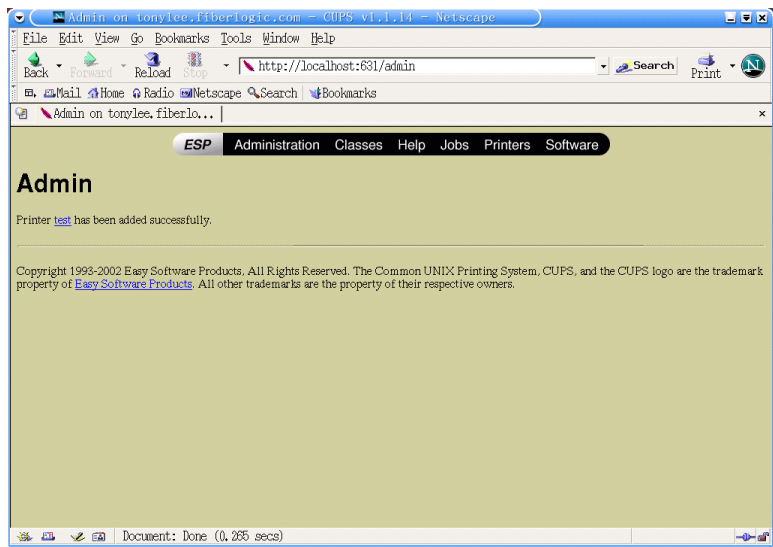


- 8. Choose the printer model, click CONTINUE.
- 9. Choose the Driver for the Model selected. Click



Multimedia Security Center

- 10. The screen shows that you've successfully added a new printer. In this case, it's called "test".
- 11. Click "test" and



Web Camera Server

By directly connecting USB Web Camera to any port of USB 2.0, the router can act as Web CAM server and perform the following functions

1. Digital Home/Office Surveillance Security system

Simply connecting a Web Camera to the router, users can surveillance their home or office through the web page from any remote or local location wherever Internet connection is available. This is the cheapest way to help users to keep close eyes on their office and home or other properties.

2. Motion Detection Security Alert System

This function allows movement from any unauthorized intruders to be detected at home or office. Once the router detected the movement, it will automatically send alert emails to pre-defined email address with captured images or you can digitally record the detected motion into your hard disk.

Caution: Web Cam server is compatible with limited web cameras. Please find the Compatible list from the Appendix 1 in this manual.

The surveillance image resolution may be affected by the quality of the web cam you purchased. Only use the high-resolution web cam from the compatible list. It is recommended to use "Logitech QuickCam 4000 Pro" or Logitech QuickCam Zoom for high quality resolution.

Home/Office Surveillance function

To activate Home/Office Surveillance function, please take the following steps:

Motion Detection Configuration

Webcam Server: ON
 Motion Detection: OFF
 Record: OFF
 Threshold: 20 % <1-100>
 Delay Time: 0 seconds
 Mail With Captured Image: YES
 Mail Counts Within 1 Minute: 5 0 for unlimited

Schedule Setting

	Mon	Tue	Wed	Thu	Fri	Sat	Sun
Start time(hour)							
Start time(minutes)							
Stop time(hour)							
Stop time(minutes)							
0~2							
3~5							
6~8							
9~11							
12~14							
15~17							
18~20							
21~23							

Mail Setting

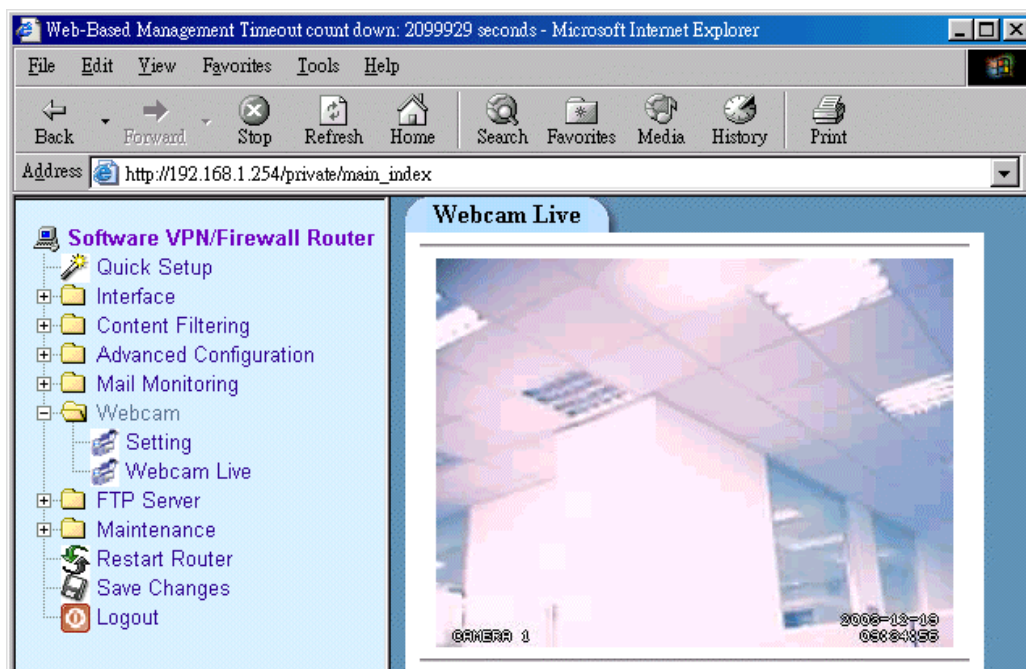
Mail Server	Mail Address	User Name	Password

1. Before activate surveillance function, please make sure Web Cam is properly plug into any USB port on the router and make sure web cam is detected by the router. You can check it at **"USB Devices"** function in maintenance menu.
2. Go to **"Web Cam"** in main menu and click on **Setting**.
3. **Web Cam Server** – To activate web cam server, please select **"ON"**.
4. Click on **"Set"** to activate the service.
5. Click on **"Web Cam Live"** from main menu to get access to live motion.
6. Only ONE Web Camera can be connected and viewed.

To view web cam live images from remote locations

You can access to live images from any remote location where Internet access is allowed. Please take the following instructions:

1. Make sure the web camera is properly connected to the any USB port of the router.
2. Make sure **Remote Management** from **Firewall** Section is set to **enable**.
3. Open a web browser and type in your router's WAN IP address. (WAN IP can be obtained from main menu on **Interface -> WAN**). Or, apply for a DDNS account from **DDNS** utility described in previous section.
4. After type in WAN IP in your web browser, it will then lead you to Web-Based Management utility page. Type in your password to login into Web-Based Management page. Select **Web cam live** to view the live images.



Motion Detection System

To activate Motion Detection System, please take the following steps:

1. Go to **Mail Address Setting** and enter all mail server information of where alert e-mail should be sent. Click on **Set** after your Email information has been entered.
2. Go to **Motion Detection Configuration** and make sure both **Web Cam Server** and **Motion Detection** are set as **enable**.
3. **Threshold** - Enter a threshold value. This value works in conjunction with the noise level. Ignore this field if motion detection is OFF.
4. **Delay Time** – This feature allows the router to automatically enabling the Motion Detection function after a period of time set in this field. This function allows you to have enough time to leave your home/office without been detected after configured the motion detection function to your router.
5. **Mail With Captured Image** - Choose **No** to mail the motion detection alert message with just words. Choose **YES** to mail the motion detection alert message with pictures taken.
6. **Mail Counts within 1 minute** - Enter the maximum alert emails mailed out within one minute. 0 is for unlimited emails mailed out if detected. The default value is 5.
7. Click on **Set** to activate Motion Detection function.

Digital Recording

The recording function allows you to digitally record movement when motion is detected. The recording function must work in conjunction with Motion Detection function.

To activate recording function, please take the following steps:

1. Connect a USB storage device to any USB port of your router.
2. Make sure both **Web Cam Server** and **Motion Detection** is set as **On**
3. Go to **Recording** and select **On** from pull-down window.
4. Select a directory on USB storage device of where the recorded files need to be stored.
5. Click on **Set** to confirm your settings.

Schedule Setting

Motion Detection System can be activated through pre-set time schedule on dairy or weekly basis. To set time schedule, please go to **Schedule Setting** and enter the desired time schedule in related time box. Click on **Set** after completion.

Schedule Setting

Start Hour	<input type="text"/>	<input type="text"/>	<input type="text"/>	<input type="text"/>	<input type="text"/>	<input type="text"/>	<input type="text"/>
Start Minutes	<input type="text"/>	<input type="text"/>	<input type="text"/>	<input type="text"/>	<input type="text"/>	<input type="text"/>	<input type="text"/>
Stop Hour	<input type="text"/>	<input type="text"/>	<input type="text"/>	<input type="text"/>	<input type="text"/>	<input type="text"/>	<input type="text"/>
Stop Minutes	<input type="text"/>	<input type="text"/>	<input type="text"/>	<input type="text"/>	<input type="text"/>	<input type="text"/>	<input type="text"/>
	Mon	Tue	Wed	Thu	Fri	Sat	Sun
0~2							
3~5							
6~8							
9~11							
12~14							
15~17							
18~20							
21~23							

Set Reset

FTP Server

By directly connecting USB storage devices to any USB 2.0 port, FTP server can be created with simple configuration. FTP Server utility allows both local and remote users to upload or download files, pictures or MP3 music from the same storage device in most easy and timely fashion. It is also cost effective where users do not need to purchase a dedicated PC to set up a 24 hours FTP service.

Before configure FTP Server, please make sure one of the following storage devices is properly plug into any USB port on the router and make sure this USB storage device is detected by the router. You can check it at "USB Devices" function in main menu.

1. USB Hard Disk Drive

(It is much recommended to use USB HDD that equipped with its own Power supply)

2. USB Flash Drive

3. MP3 Player

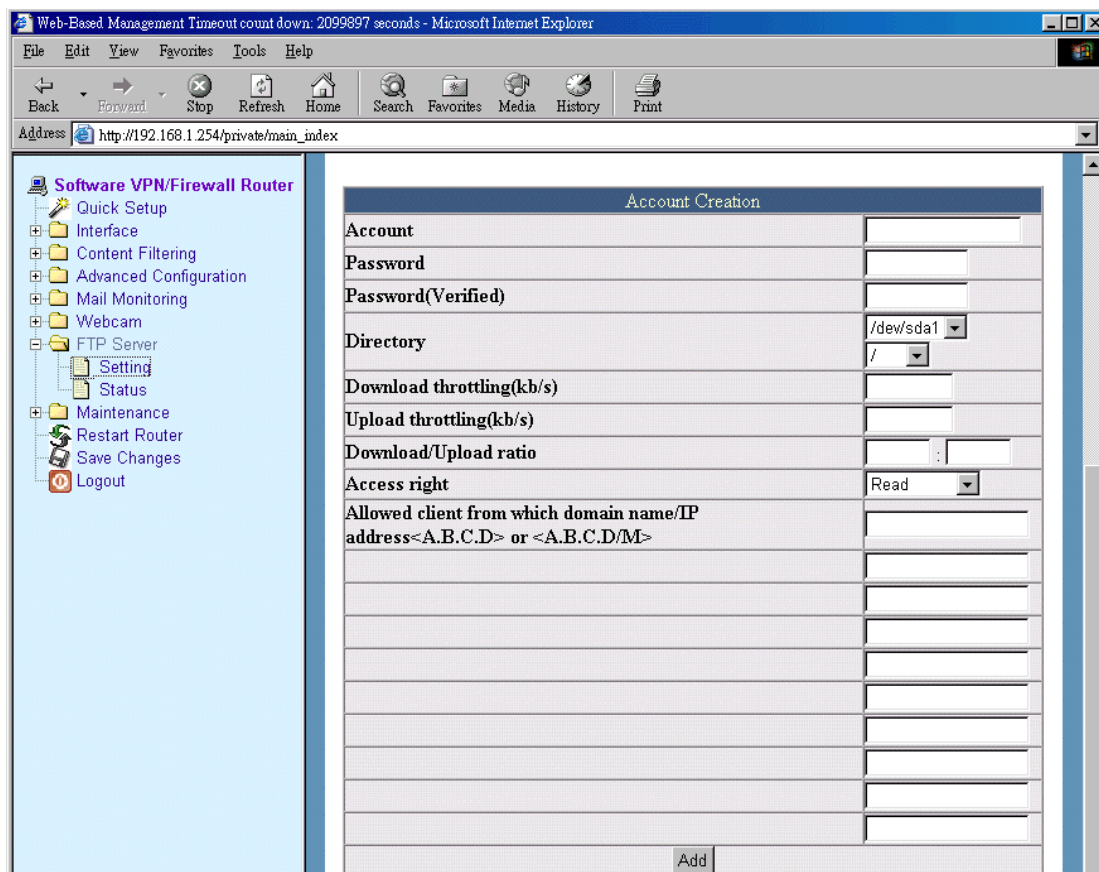
4. USB Media Reader

Caution:

FTP server is compatible with FAT32 or EXT2 format USB storage device. In case you need to format your USB storage device. Please always make sure the device is formatted with FAT32 or EXT2 standard.

Account Creation

In order to configure FTP Server, please click on “**FTP Server**” icon in the main menu and click on “**setting**”. To configure basic simple FTP server, please take the following steps:



To create a new FTP account. Please go to “**Account Creation**” and enter information into following columns.

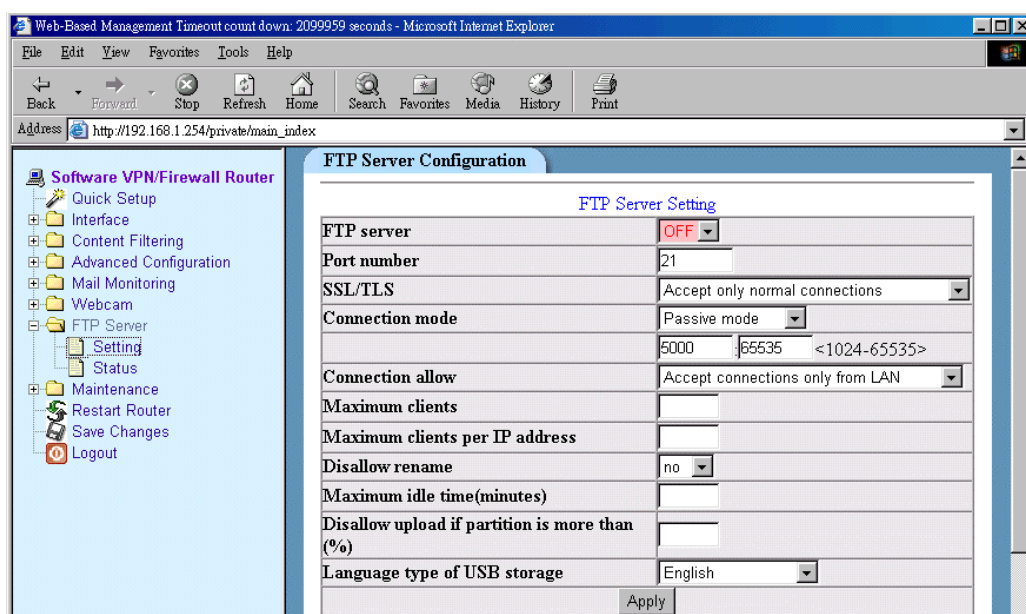
1. **Account name** – You can input any name you like and it will be used to identify the FTP server.
2. **Password** – Up to 8 characters of password can be applied in any combination of digits or letters. Verify the password in the next column.
3. **Partition** – Your storage device could have more than two separate partitions. This column allows you to select which partition to be used for FTP server.
4. **Directory** – The section provides option of which folder should be used for FTP Server.
5. **Access Right** – Set “**Read**” for download only and set “**Read/Write**” for both upload and download.
6. Click “**Add**” after above information is given.

Account Creation – Advanced Setting

- **Download throttling (kb/s)** – Download speed can be limited by a given value.
- **Upload throttling (kb/s)** – Upload speed can be limited by a given value.
- **Download/Upload ratio** – When the value is set, you are able to download and upload according to desired ratio.
- **Allowed client from which domain name/IP address < A.B.C.D> or < A.B.C.D./M>**
- This function allows you to give FTP access authority to limited users by entering IP address of authorized users.

FTP Server Setting

To activate FTP server, please go to “**FTP Server Setting**” and take the following steps:



- **FTP Server** – Select “**On**” to activate FTP server function.
- **Connection Allow** – Both WAN and LAN IP of router can be used to identify FTP Server. Select “**Accept Connections only from LAN**” will activate FTP server within local LAN group. Select “**Accept Connections from LAN and WAN**” will activate FTP Server for remote users.
- Click “**Apply**” after above information is given.

FTP Server Setting – Advance setting

- **Port number** – Port number - Define the FTP command transfer service port. Default value is 21. If you have changed this, remember to change the service port setting of your FTP client.
- **SSL/TLS** –Enable/Disable the SSL transfer of the FTP command. There are three choices of this option, you can use only normal connections, only SSL/TLS connections, or accept both of them at the same time. Enable the SSL/TLS connections only when you have the security concern. The default value of this option is <Accept only normal connections>.
- **Connection mode** – Passive mode served as default value. The data can be transmitted through Port 5000 ~ 65535. When select Active mode, the data transmitted through standard Port 20.
- **Maximum clients** – You can restrict limited number of clients access FTP at the same time. Leave it blank for unlimited access.
- **Maximum clients per IP** – You can restrict limited number of clients access FTP at the same time with same IP. Leave it blank for unlimited access.
- **Disallow rename** – Default value is “No”. Select “Yes” if do not allow rename the files.
- **Maximum idle time (minutes)** – When a specific time value is added, FTP Server will be de-activated if it has no activity within the time limit.
- **Disallow upload if partition is more than (%)** – This function allow users to limit their storage capacity in their storage device.
- **USB Disk Mount Language** – The function allows the file name to be viewed in different languages from FTP web page.

How to create a FTP Server IP address??

After completed the configuration steps listed above, FTP server can be accessed through web page by keying its unique FTP IP address. The formula of creating FTP IP address is listed below:

ftp://Account-name@WAN IP Address
(Need to type in password when log in)

ftp://Account-name:Password@WAN IP Address
(Do not need to type password when log in)

For example: If the account name of the FTP server you configured is "Fiber" and your WAN IP address is 192.168.1.254, Password is 1234.

Then, Your FTP IP address should be

ftp://fiber@192.168.1.254

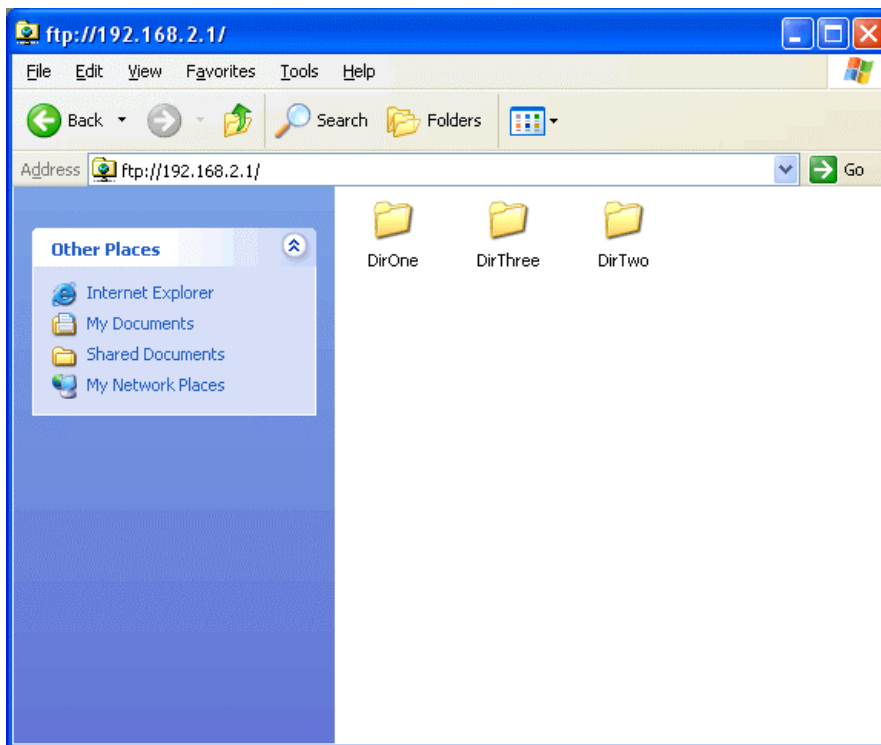
Or

ftp://fiber:1234@192.168.1.254

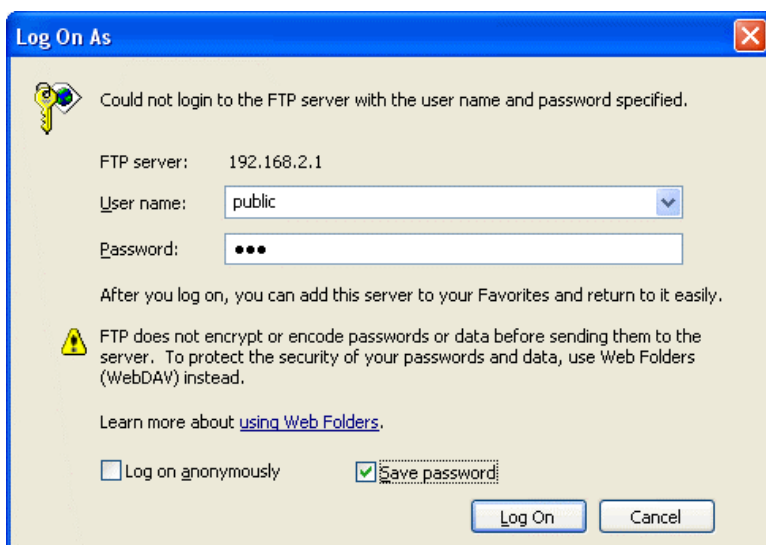
How to access your FTP server??

After the FTP server is set up, it is open for access from both local and remote network via web page.

1. Open a web page and type in FTP IP address



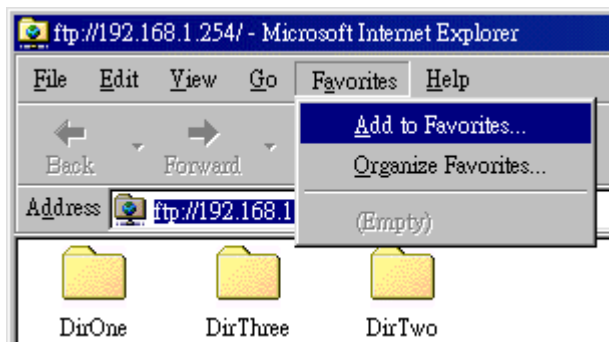
2. Once the FTP IP address is entered, the screen will pop up and required to enter Account name and Password. Please enter the information and click ok.



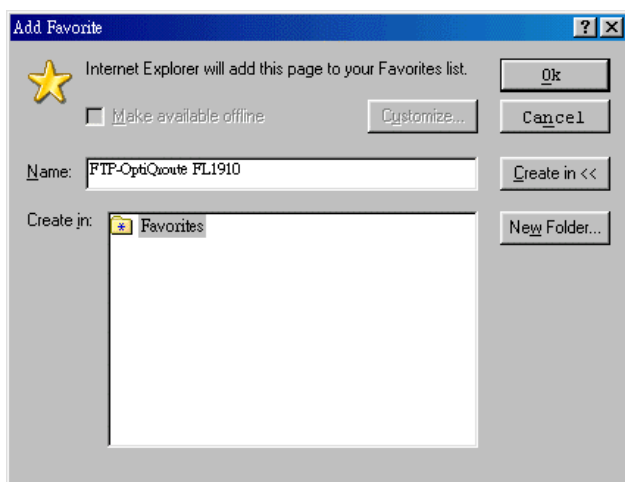
To create “Network Neighborhood” by using FTP Server (WIN 98)

After successfully set up a FTP server, you can also use this FTP server to act as one of your “Network Neighborhood” within your LAN network.

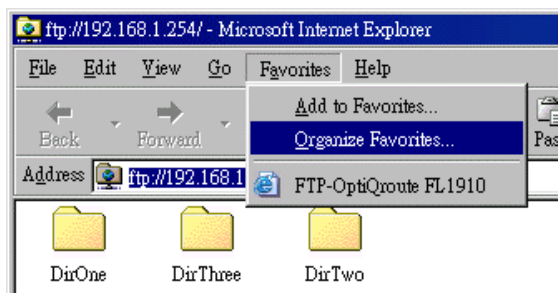
1. After log onto FTP Server web page, please go to “Favorites” and click on “Add to favorites”.



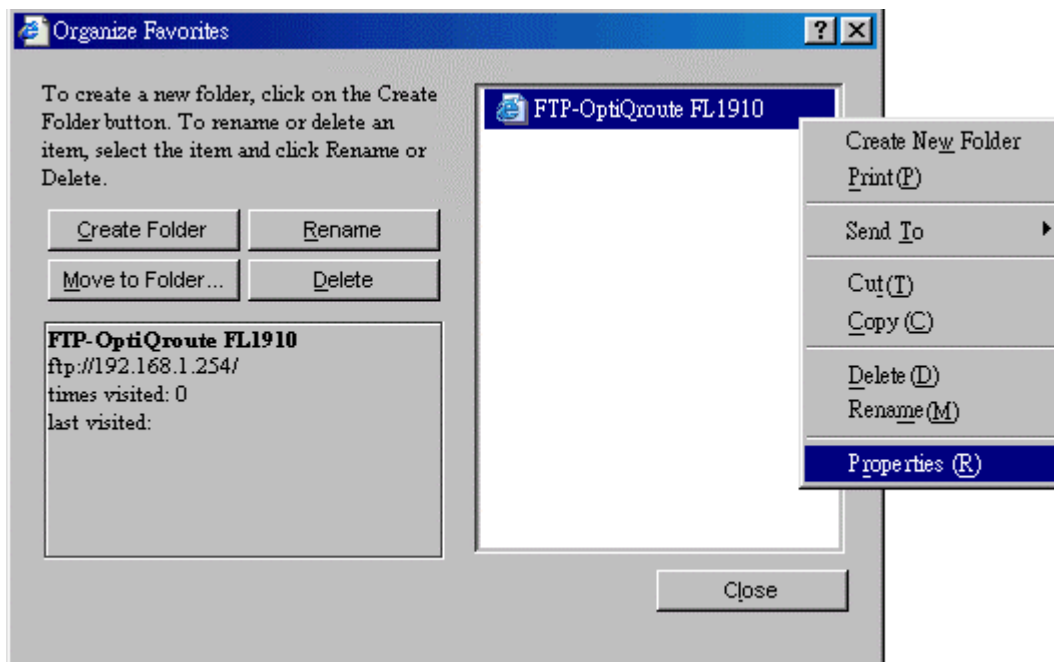
2. Please change the name if necessary and click on OK.



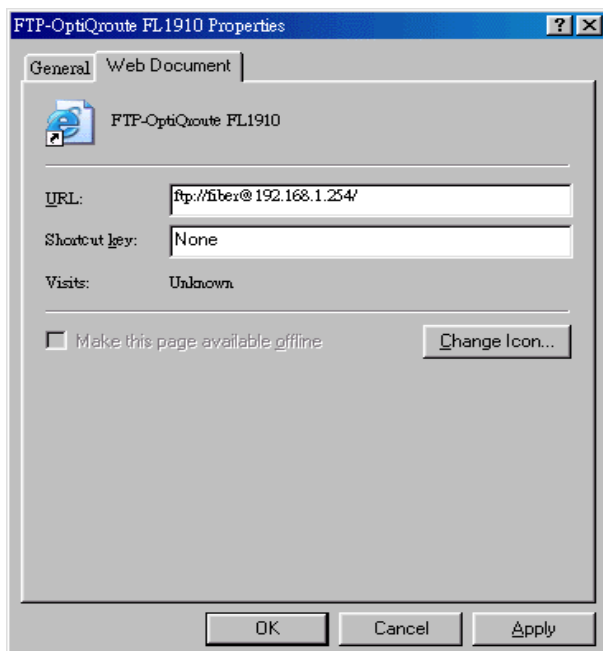
3. Please select “Organize Favorites” from “Favorites” menu.



4. Please find the name of your FTP server which you added to “favorites” and hit single click on the name. Click on the right button of your mouse in order to find “properties” function.



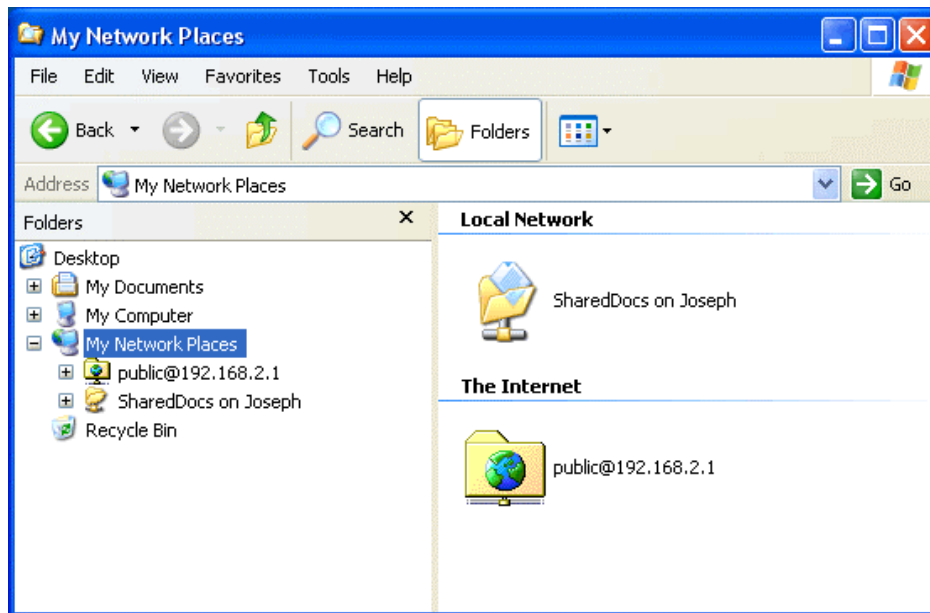
5. After click on “properties”, the following screen will appear.



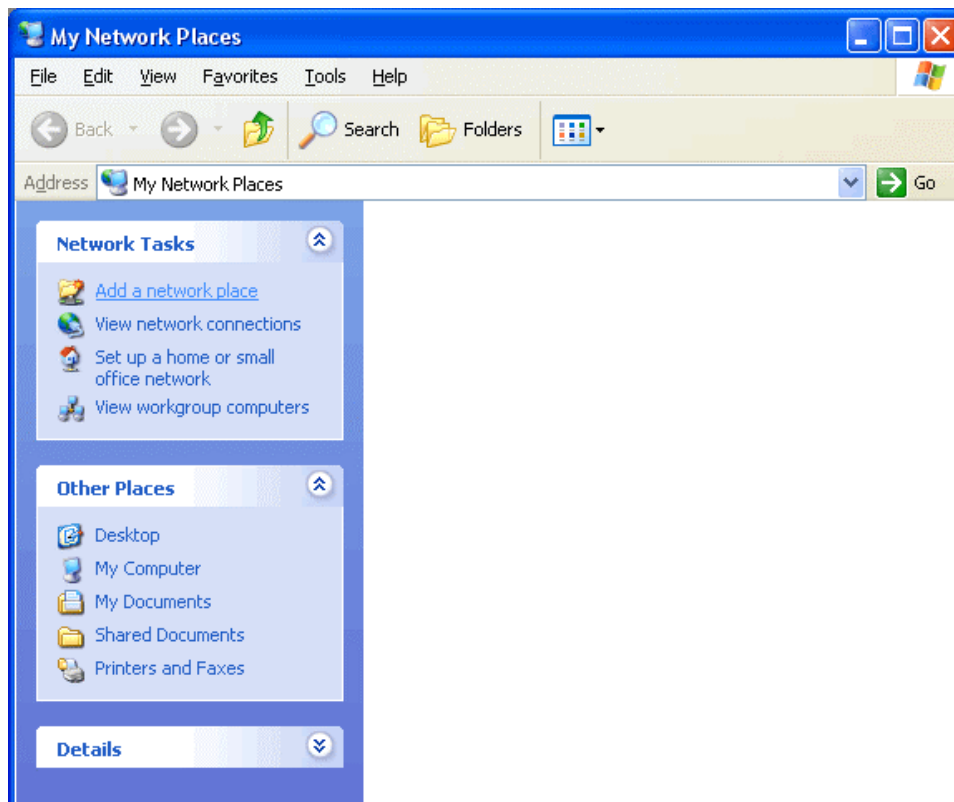
7. Click on OK to finish the setting. Now you can find the FTP folder appear in your Network Neighborhood from File Manager.

To create “Network Neighborhood” by using FTP Server (Win 2000/XP)

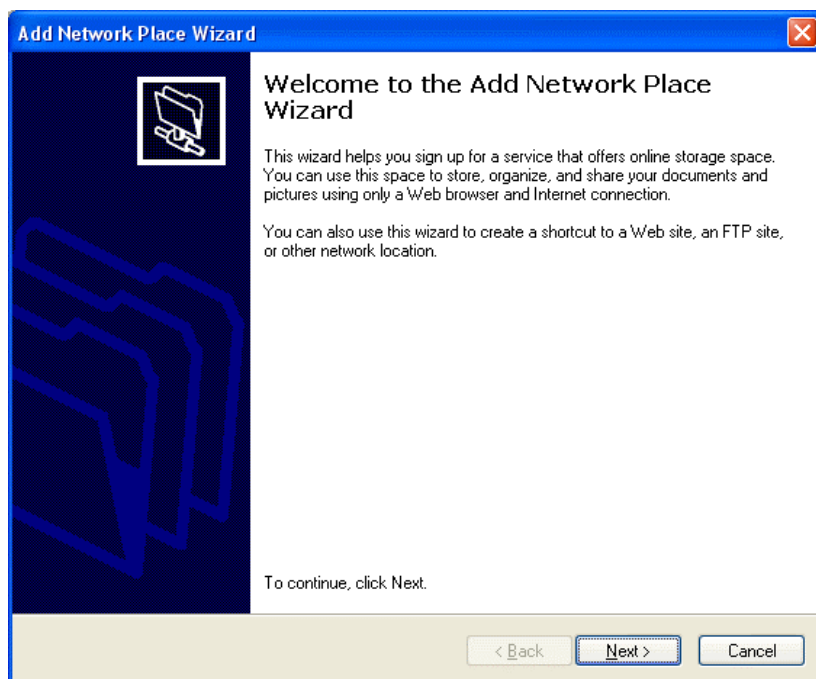
1. Open “Window Explorer” and click on “Network Neighborhood” or “My Network Places”.



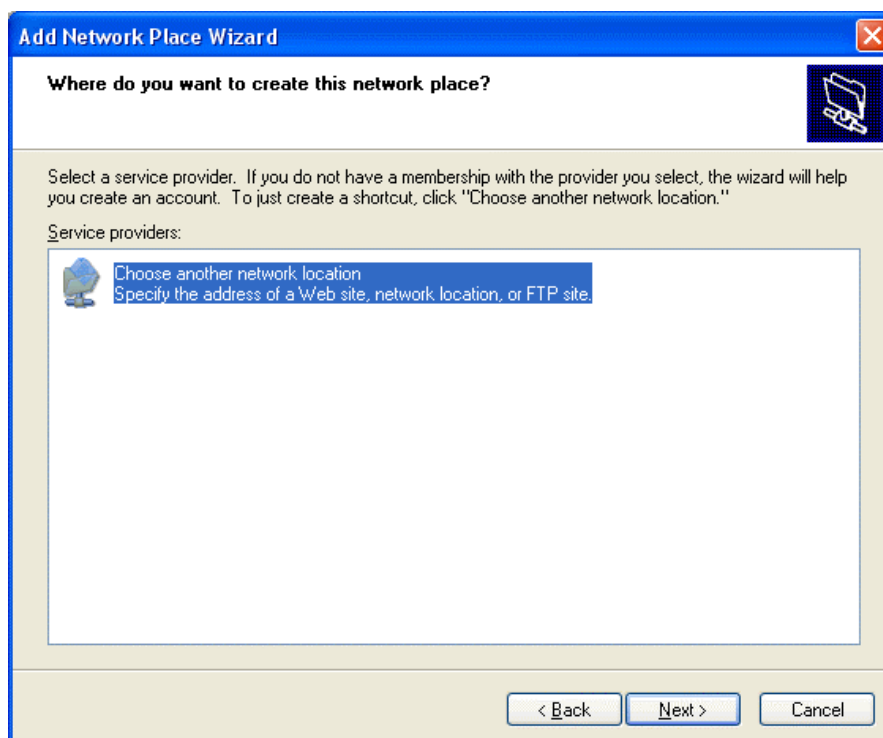
2. You will then find a utility called “Add a Network Place”.



3. After click on "Add a Network Place", a welcome page of setup wizard will appear. Click next to begin the setup.



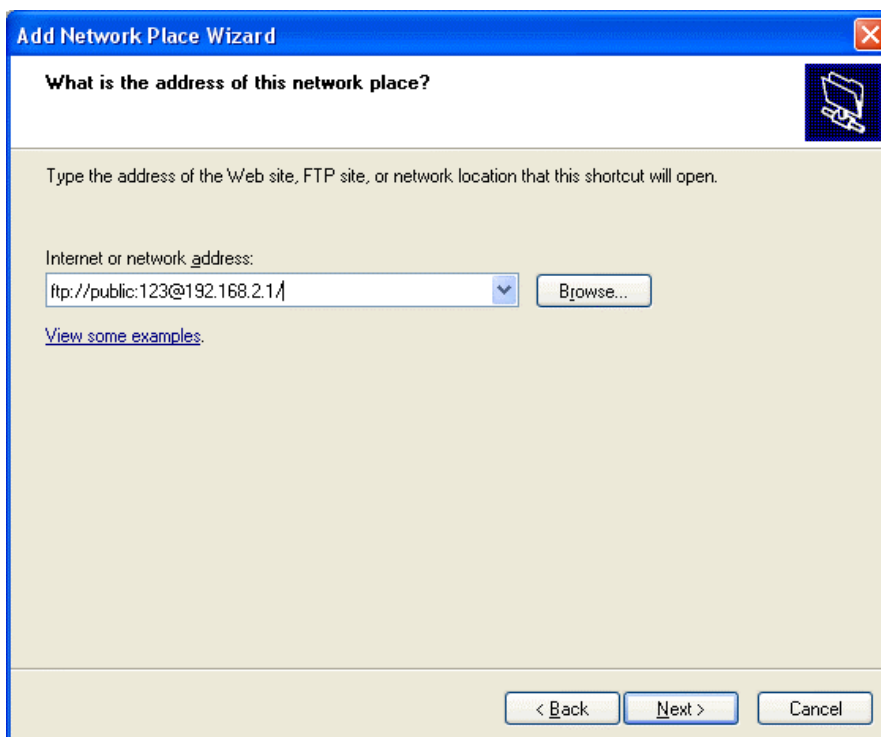
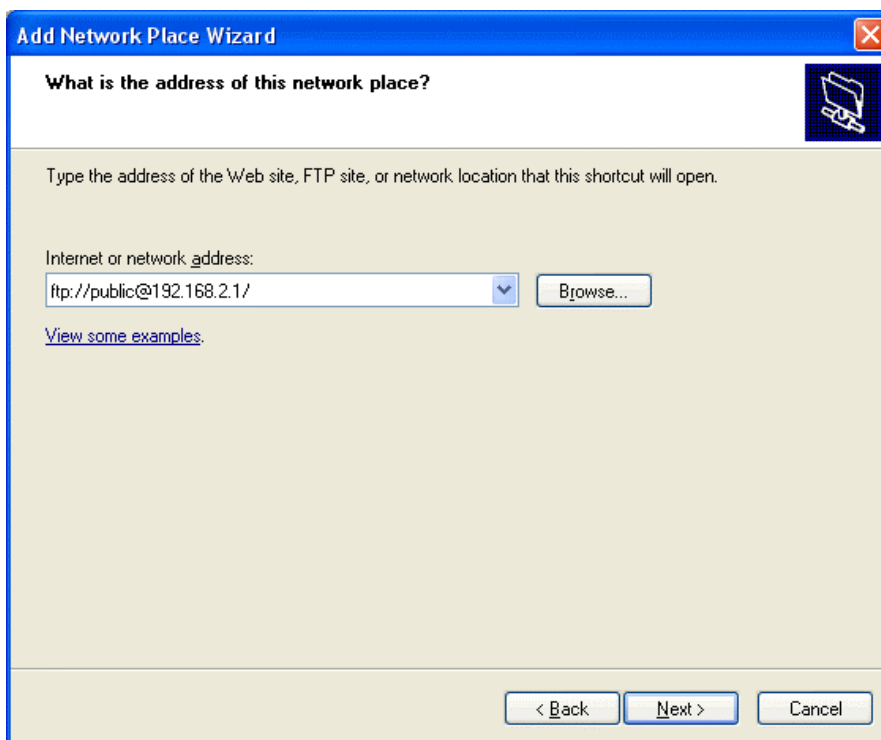
4. Click on next again to continue the set up of creating Network Neighborhood from FTP location.



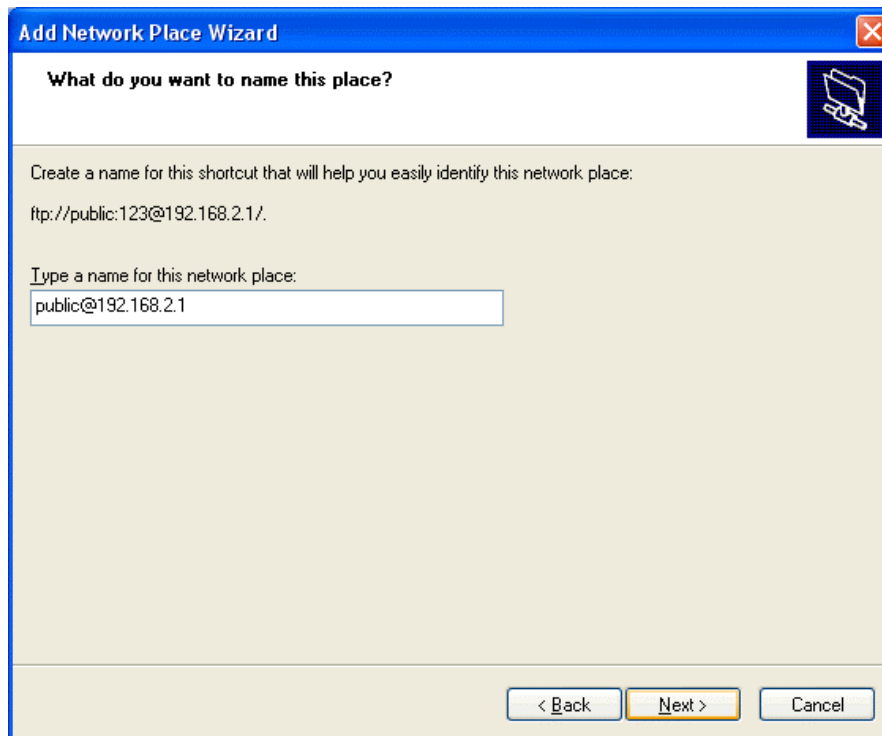
5. Type in FTP address where you need to set up for Network Neighborhood.

Tip: If you do not wish to enter password every time when you access the FTP server from "My Network Places", it is recommended to add password into FTP IP address so other users do not need to enter the password again if they need to access it within your LAN network. The FTP address should be in the following format.

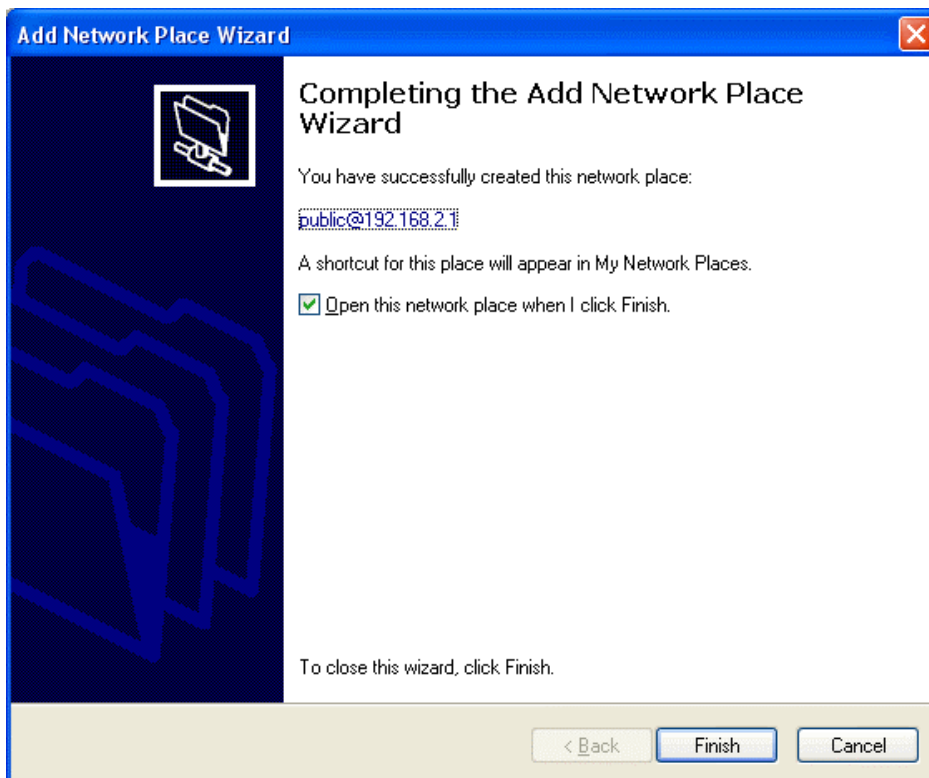
ftp://Account-name:Password@WAN IP Address



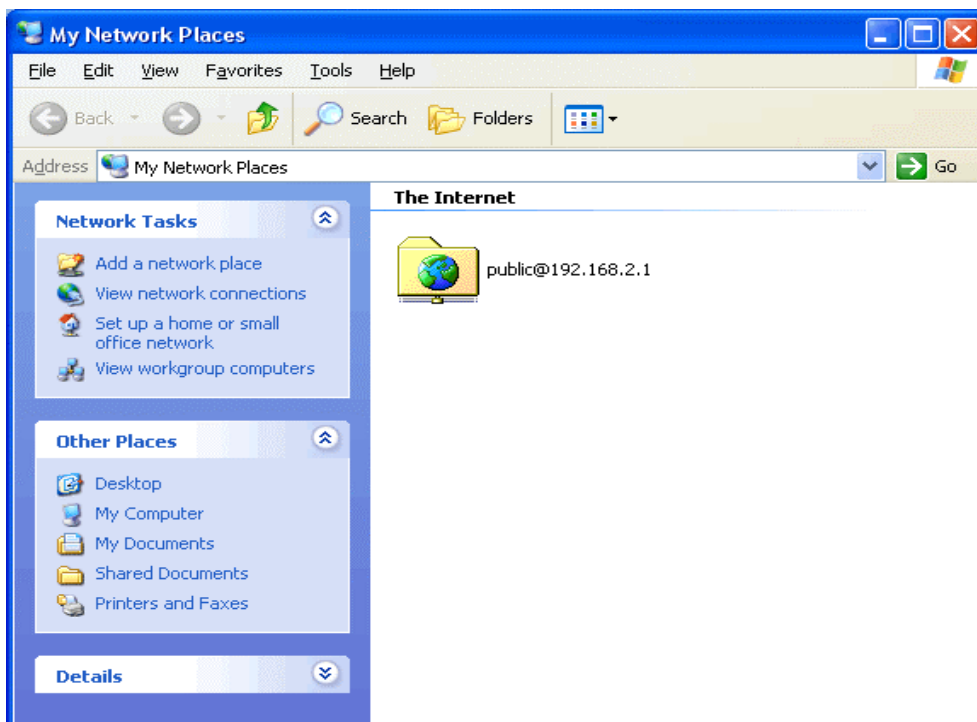
6. In this section, you need to type the name of FTP server in "Network Neighborhood". Click next to continue.



6. Now you had completed the setup. Click finish to exit Setup Wizard.



7. Now go back to "File management" and then go to Network Neighborhood, you should find the folder of FTP Server appear in this section.



FTP Server Status

In this section, all FTP server activity can be monitored or forced disconnection when the file is uploading or downloading.

- **Account** – this section indicate the account name of FTP Server which currently transmitting the data.
- **State** – this section indicate the connection status.
- **Remote IP** – this section indicate Remote IP when it connect to FTP Server.
- **Time** – this section indicate the connection time
- **Filename** – this section indicate the file name when downloading or uploading are in processing.
- **Operation** – Downloading or uploading transmission can be discounted at any time if “Kick” box is checked and “Set” button is pressed.

Account	State	Remote ip	Time	Filename	Operation
public	upload	192.168.1.10	00:00:19	S-1.01.014	<input type="checkbox"/> Kick

Set Reset

Appendix A**Web Camera Compatible List**

Manufacturer	Model
Aiptek	HyperVcam Home
Amitech	AWK-300
Askey	Askey VC010
Alpha Vision Tech.	AlphaCam SE (model AC-520)
Avaks	AvCam USB-600
AverMedia	InterCam Elite
BestBuy	EasyCam U
Creative Labs	WebCam (model PD1001, alternate version)
Creative Labs	WebCam 3
Creative Labs	WebCam 5 (PID=400c)
Creative Labs	WebCam Plus (Model CT6840)
Creative Labs	WebCam Plus ("WebCam Mini"; model PD0040)
Creative Labs	WebCam Pro (model PD1030)
Creative Labs	Webcam Pro Ex
Elecom	UCAM-C1C30
Elta	WEBCam 8211 PCC
Ezonics	EZPhone Cam
Hawking Tech.	UC-110
Hawking Tech.	UC-300
Hawking Tech.	UC-310
I-View	NetView NV300M
Intel	Me2Cam
LG Electronics	LPC-UM10
LG Electronics	LPC-UM15
Liferview	USB CapView
Liferview	RoboCam

Multimedia Security Center

Lifetec	LT 9388
Logitech	QuickCam 3000 Pro
Logitech	QuickCam 4000 Pro
Logitech	QuickCam Zoom
Logitech	QuickCam Notebook Pro
Logitech	QuickCam Orbit/Sphere
Maxxtro	CAM22U
Maxell	Maxcam (MPCC-1)
Medion	MD9388
MediaForte	MV300
MediaForte	PC Vision 300
Mustek	WCam 3X
Mtekvision	Zeca MV402
OmniVision	OV7110 Eval Board
OmniVision	OV511 +/OV7120 Eval Board
OmniVision	OV511 +/OV7620 Eval Board
Pretec	PCC-600
Prochips	PCA-3100
Puretek	PT-6007
Philips	PCVC675K "Vesta"
Philips	PCVC680K "Vesta Pro"
Philips	PCVC690K "Vesta Scan"
Philips	PCVC730K "ToUCam Fun"
Philips	PCVC740K "ToUCam Pro"
Philips	PCVC750K "ToUCam Scan"
Sotec	Sotec Afina Eye
Suma	EON
Samsung	MPC-C10
Samsung	MPC-C30
Samsung	Anycam MPC-M10

Multimedia Security Center

TRENDNet	TV-PC100
TRENDNet	TV-PC300
TRENDNet	TV-PC301
Trust	Sp@ceC@m USB
Trust	Sp@ceC@m 200
Trust	Sp@ceC@m 300
Typhoon	WebShot 350
TEVion	MD 9308
TCE	NetCam 310u
Terratec	TerraCam PRO
Visionite	Visionite VCS UM100
Visionite	Visionite VCS UC300
Waytech	I-Pac VIC-30
Webeye	2000B

CE Safety Statements

This device has been tested and found to comply with the requirements set up in the council directive on the approximation of the law of member states relating to EMC Directive 89/336/EEC, Low Voltage Directive 73/23/EEC and R&TTE Directive 99/5/EC.

The product has been approved for LVD and covered the following countries: Austria, Belgium, Denmark, France, Finland, Germany, Greece, Iceland, Ireland, Italy, Luxembourg, Netherlands, Norway, Portugal, U.K., Spain, Sweden.

FCC Statements

This equipment has been tested and found to comply with the limits for a Class B digital device, pursuant to Part 15 of the FCC rules. These limits are designed to provide reasonable protection against harmful interference in a residential installation. This equipment generates, uses and can radiate radio frequency energy and if not installed and used in accordance with the instructions, may cause harmful interference to radio communications. However, there is no guarantee that interference will not occur in a particular installation. If this equipment does cause harmful interference to radio or television reception, which can be determined by turning the equipment off and on, the user is encouraged to try correct the interference by one or more of the following measures:

- Reorient the receiving antenna.
- Increase the separation between the equipment and receiver.
- Connect the equipment into and outlet on a circuit different from that to which the receiver is connected.
- Consult the dealer or an experienced radio/TV technician for help.

Warning :

Use only shielded cables to connect I/O devices to this equipment.

You are cautioned that changes or modifications not expressly approved by the party responsible for compliance could void your authority to operate the equipment.

User should keep away from this router in the distance of 20 cm at least, to avoid the harm of radiation.