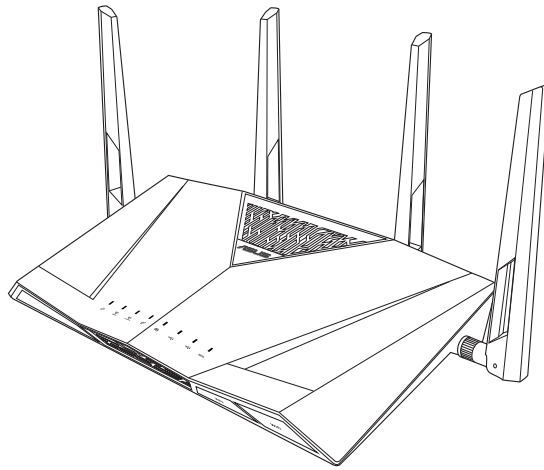




**ASUS**

# **RT-AC88U**

## **Wireless-AC3100 Dual Band Gigabit Router**



### **Quick Start Guide**

E10303 / First Edition / April 2015





## Table of contents

English.....	3
T-Chinese.....	XX
French.....	XX
Spanish.....	XX



---

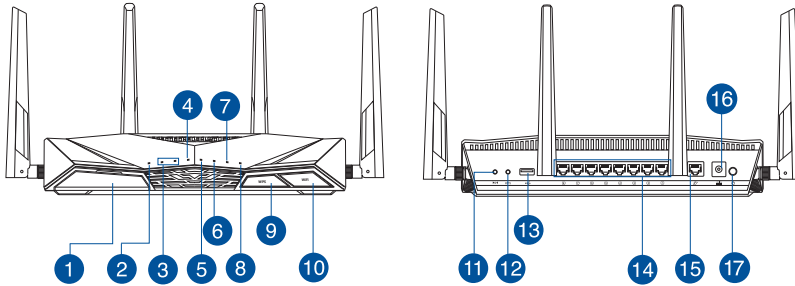
### **NOTE / <T-CHINESE> / <FRENCH> / <SPANISH>**

- For more details, refer to the user manual included in the support CD.
  - <T-CHINESE>
  - <FRENCH>
  - <SPANISH>
- 





## A quick look



1 USB 3.0 port	10 Wi-Fi On/Off button
2 Power LED	11 Reset button
3 5GHz LED / 2.4GHz LED	12 WPS button
4 WAN (Internet) LED <b>Red:</b> No IP or no physical connection. <b>On:</b> Has physical connection to a wide area network (WAN).	13 USB 2.0 port
5 LAN 1~8 LED	14 LAN 1 ~ 8 ports
6 USB 3.0 LED	15 WAN (Internet) port
7 USB 2.0 LED	16 Power (DC-IN) port
8 WPS LED	17 Power button
9 WPS LED On/Off button	

English



## Package contents

- |  |   |
|--|---|
| <input checked="" type="checkbox"/> RT-AC88U Wireless Router | <input checked="" type="checkbox"/> AC adapter        |
| <input checked="" type="checkbox"/> Network cable (RJ-45)    | <input checked="" type="checkbox"/> Quick Start Guide |
| <input checked="" type="checkbox"/> Support CD (User Manual) |   |



### NOTES:

- If any of the items is damaged or missing, contact your retailer.
- **USB External HDD/Flash disk:**
  - The wireless router works with most USB HDDs/Flash disks up to 4TB and supports read-write access for FAT16, FAT32, NTFS, and HFS+.
  - To safely remove the USB disk, launch the web GUI (<http://router.asus.com>), then in the **Network Map** page's upper right corner, click the USB icon and click **Eject USB 3.0 / USB 2.0**.
  - Incorrect removal of the USB disk may cause data corruption.
  - For the list of file system and hard disk partitions that the wireless router supports, visit <http://event.asus.com/networks/disksupport>
- For the list of printers that the wireless router supports, visit <http://event.asus.com/networks/printersupport>



## Installing your router

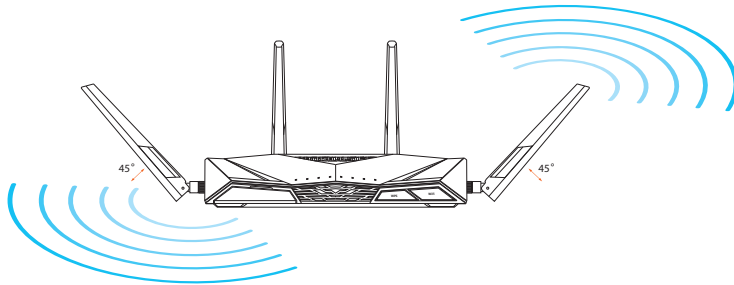


**IMPORTANT:** Before installing the router, ensure that Internet connection is available.

### 1. Position your wireless router.

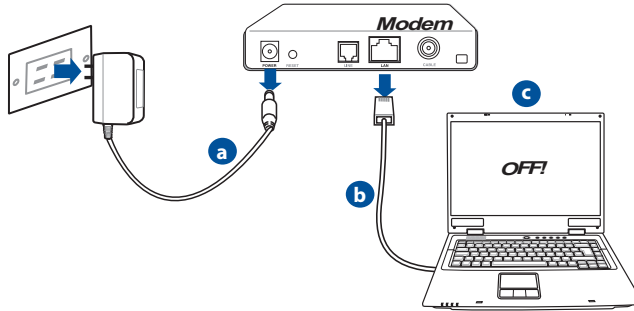
For optimal wireless transmission between the wireless router and connected wireless devices, ensure that you:

- Place the wireless router in a centralized area for a maximum wireless coverage for the network devices.
- Keep the wireless router away from metal obstructions and away from direct sunlight.
- Keep the wireless router away from 802.11g or 20MHz only Wi-Fi devices, 2.4GHz computer peripherals, Bluetooth devices, cordless phones, transformers, heavy-duty motors, fluorescent lights, microwave ovens, refrigerators, and other industrial equipment to prevent signal interference or loss.
- Always update to the latest firmware. Visit the ASUS website at <http://www.asus.com> to get the latest firmware updates.
- To ensure the best wireless signal, orient the four detachable antennas as shown in the drawing below.



## 2. Prepare your modem.

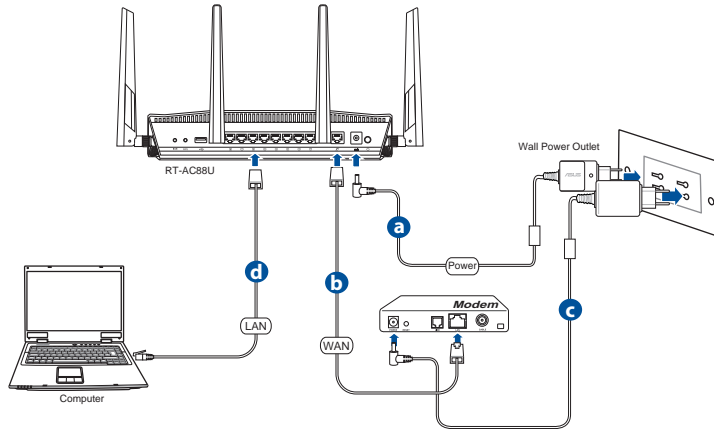
- a. Unplug the AC adapter from the power outlet and disconnect it from your cable/ADSL modem.
- b. Disconnect the network cable from your cable/ADSL modem.
- c. Reboot your computer (recommended).



**WARNING!** Before disconnecting the wires/cables, ensure that your cable/ADSL modem has been turned off for at least two minutes. If your modem has a backup battery, remove it as well.



### 3. Set up your wireless environment.



- Insert your wireless router's AC adapter to the DC-IN port and plug it to a power outlet.
- Using another network cable, connect your modem to your wireless router's WAN port.
- Insert your modem's AC adapter to the the DC-IN port and plug it to a power outlet.
- Using the bundled network cable, connect your computer to your wireless router's LAN port. Ensure that the WAN and LAN LEDs are blinking.

### 4. Disable some settings on your computer.

- Disable the proxy server, if enabled.
- Set the TCP/IP settings to automatically obtain an IP address.
- Disable the dial-up connection, if enabled.



**NOTE:** For more details on disabling your computer settings, refer to **Frequently Asked Questions (FAQs)**.



## Quick Internet Setup (QIS) with Auto-detection

The Quick Internet Setup (QIS) function guides you in quickly setting up your Internet connection.



**NOTE:** When setting the Internet connection for the first time, press the Reset button on your wireless router to reset it to its factory default settings.

### To use QIS with auto-detection:

1. Log into the Web GUI. The QIS page launches automatically.



### NOTES:

- By default, the login username and password for your wireless router's Web GUI is **admin**.
- The wireless router's login username and password is different from the 2.4GHz/5GHz network name (SSID) and security key. The wireless router's login username and password allows you to log into your wireless router's Web GUI to configure your wireless router's settings. The 2.4GHz/5GHz network name (SSID) and security key allows Wi-Fi devices to log in and connect to your 2.4GHz/5GHz network.

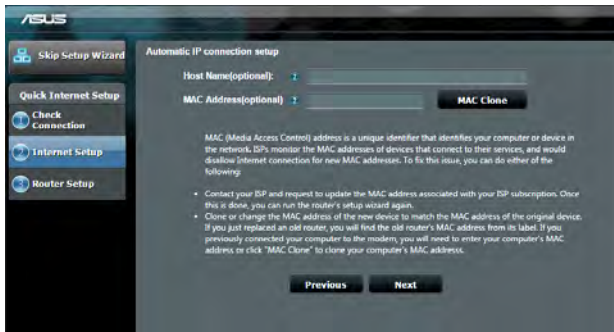




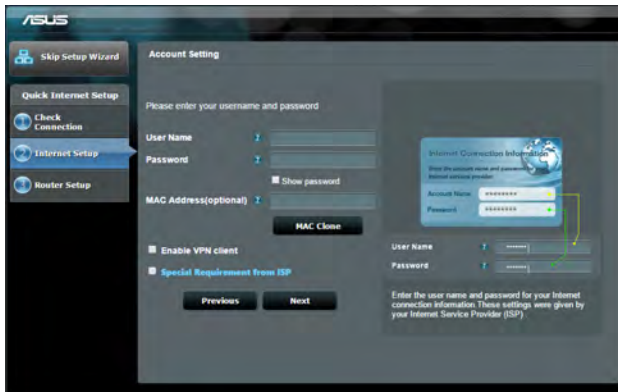
- The wireless router automatically detects if your ISP connection type is **Dynamic IP, PPPoE, PPTP** and **L2TP**. Key in the necessary information for your ISP connection type.

**IMPORTANT!** Obtain the necessary information from your ISP about the Internet connection type.

for Automatic IP (DHCP)



for PPPoE, PPTP and L2TP





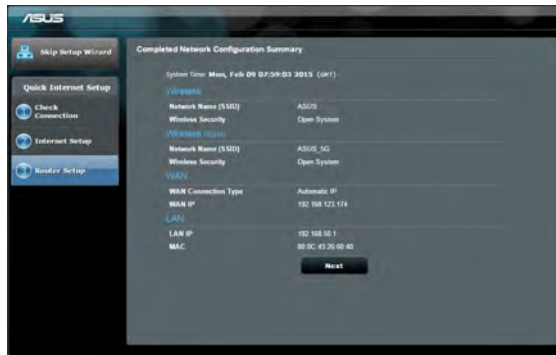
## NOTES:

- The auto-detection of your ISP connection type takes place when you configure the wireless router for the first time or when your wireless router is reset to its default settings.
- If QIS failed to detect your Internet connection type, click **Skip to manual setting** and manually configure your connection settings.

3. Assign the wireless network name (SSID) and security key for your 2.4GHz and 5 GHz wireless connection. Click **Apply** when done.



4. Your Internet and wireless settings are displayed. Click **Next** to continue.
5. Read the wireless network connection tutorial. When done, click **Finish**.





## Connect to the wireless network

There are two ways for your wireless clients (notebook, tablet PC, smartphone and so on) to connect to RT-AC88U's wireless network.

### Connect to the wireless network manually

To connect to the wireless network manually:

1. Enable the Wi-Fi function on your wireless client to scan for available wireless networks.
2. Select the SSID or network name that you assigned to your RT-AC88U's network.
3. Enter the password and click **Connect**.

### Connect to the wireless network through WPS

RT-AC88U has a WPS (Wi-Fi Protected Setup) button for you to connect your wireless client to RT-AC88U's network without entering password.

To connect to the wireless network through WPS:

1. Press the WPS button at the back of RT-AC88U. Refer to the section **A quick look** for the location of the WPS button).
2. Press the WPS button of your wireless client within two minutes or follow the WPS instructions that came with the wireless client. When connecting via WPS, the WPS LED on your router blinks fast.
3. Wait until your router's WPS LED turns into a solid light indicating a successful connection between your router and your wireless client.

## Managing the router via the ASUSWRT web GUI

Your wireless router comes with the intuitive ASUSWRT web graphical user interface. ASUSWRT allows you to easily configure its various features through a web browser such as Internet Explorer, Firefox, Safari, or Google Chrome.



**NOTE:** Use the search bar on the bottom of the interface to get more information from ASUS technical support site <http://support.asus.com>.



### IMPORTANT:

- For more details on using your router's Web GUI, refer to the user manual.
- Always check and upgrade firmware to the latest version for better experience.
- Visit ASUS Networking video channel for tutorial videos on featured functions.





## AiCloud

ASUS AiCloud app provides you with access to your data wherever and whenever you have an Internet connection. It also allows you to access your ASUS WebStorage account via the AiCloud mobile app on your iOS or Android device, or via a web browser.

To install AiCloud:

1. Ensure that your router's firmware version is the latest one and supports AiCloud.
2. Download AiCloud app from Google Play or App Store.
3. Install your USB storage device to your router. Refer to section **A quick look** for the location of the USB ports.
4. Connect your iOS or Android devices to the router through Wi-Fi. The AiCloud app will automatically guide you through the setup process.
5. You can now access, stream and share to all files in your USB storage. Search ASUS AiCloud for more information. Watch tutorial videos for step-by-step guide.

English



Google Play



App Store

## Frequently Asked Questions (FAQs)

### **After following the steps, I still cannot access the wireless router's web graphics user interface (web GUI) to configure the wireless router settings.**

Ensure that your PC's proxy settings are disabled and your PC'S IP address is obtained from the DHCP server automatically. for details on disabling the proxy settings, visit the ASUS Support site at <http://support.asus.com>. For details on using the DHCP server to obtain IP addresses automatically, refer to your Windows® or Mac operating system's help feature.

### **The client cannot establish a wireless connection with the router.**

#### **Out of Range:**

- Put the router closer to the wireless client.
- Try to change the channel settings.

#### **Authentication:**

- Use wired connection to connect to the router.
- Check the wireless security settings.
- Press the Reset button at the rear panel for more than five seconds.

#### **Cannot find the router:**

- Press the Reset button at the rear panel for more than five seconds.
- Check the setting in the wireless adapter such as SSID and encryption settings.

### **Cannot access the Internet via wireless LAN adapter.**

- Move the router closer to the wireless client.
- Check whether the wireless adapter is connected to the correct wireless router.
- Check whether the wireless channel in use conforms to the channels available in your country/area.
- Check the encryption settings.



- Check if the ADSL or Cable connection is correct.
- Retry using another Ethernet cable.

**If the ADSL “LINK” light blinks continuously or stays off, Internet access is not possible - the Router is unable to establish a connection with the ADSL network.**

- Ensure that all your cables are all properly connected .
- Disconnect the power cord from the ADSL or cable modem, wait a few minutes, then reconnect the cord.
- If the ADSL light continues to blink or stays OFF, contact your ADSL service provider.

**Network name or encryption keys are forgotten.**

- Try setting up the wired connection and configuring the wireless encryption again.
- Press the Reset button of the wireless router for more than five seconds.
- Factory default settings:

<b>User name / Password:</b> admin / admin	<b>IP address:</b> 192.168.1.1	<b>2.4 GHz network SSID:</b> ASUS	<b>5 GHz network SSID:</b> ASUS_5G
---	-----------------------------------	--	---

**Where can I find more information about the wireless router?**

- User Manual in the support CD
- Online FAQ site: <http://support.asus.com/faq>
- Technical Support site: <http://support.asus.com>
- Customer Hotline: Refer to the Support Hotline in this Quick Start Guide

**ASUS Recycling/Takeback Services**

ASUS recycling and takeback programs come from our commitment to the highest standards for protecting our environment. We believe in providing solutions for you to be able to responsibly recycle our products, batteries, other components, as well as the packaging materials. Please go to <http://csr.asus.com/english/Takeback.htm> for the detailed recycling information in different regions.

## REACH

Complying with the REACH (Registration, Evaluation, Authorisation, and Restriction of Chemicals) regulatory framework, we published the chemical substances in our products at ASUS REACH website at <http://csr.asus.com/english/index.aspx>

## Federal Communications Commission Statement

This device complies with Part 15 of the FCC Rules. Operation is subject to the following two conditions:

- This device may not cause harmful interference.
- This device must accept any interference received, including interference that may cause undesired operation.

This equipment has been tested and found to comply with the limits for a class B digital device, pursuant to part 15 of the FCC Rules. These limits are designed to provide reasonable protection against harmful interference in a residential installation.

This equipment generates, uses and can radiate radio frequency energy and, if not installed and used in accordance with the instructions, may cause harmful interference to radio communications. However, there is no guarantee that interference will not occur in a particular installation. If this equipment does cause harmful interference to radio or television reception, which can be determined by turning the equipment off and on, the user is encouraged to try to correct the interference by one or more of the following measures:

- Reorient or relocate the receiving antenna.
- Increase the separation between the equipment and receiver.
- Connect the equipment into an outlet on a circuit different from that to which the receiver is connected.
- Consult the dealer or an experienced radio/TV technician for help.

## FCC Radiation Exposure Statement

This equipment complies with FCC radiation exposure limits set forth for an uncontrolled environment. This equipment should be installed and operated with minimum distance 25cm between the radiator & your body.



---

**IMPORTANT!** This device is restricted for indoor use.

---





**WARNING!** Any changes or modifications not expressly approved by the party responsible for compliance could void the user's authority to operate the equipment.



**WARNING!**

- Users must not modify this device. Modifications by anyone other than the party responsible for compliance with the rules of the Federal Communications Commission (FCC) may void the authority granted under FCC regulations to operate this device.
- For product available in the USA/Canada market, only channel 1~11 can be operated. Selection of other channels is not possible.

### Prohibition of Co-location

This device and its antenna(s) must not be co-located or operating in conjunction with any other antenna or transmitter except in accordance with FCC multi-transmitter product procedures.

### Safety Information

To maintain compliance with FCC's RF exposure guidelines, this equipment should be installed and operated with minimum distance 25cm between the radiator and your body. Use on the supplied antenna.

Declaration of Conformity for R&TTE directive 1999/5/EC

Essential requirements – Article 3

Protection requirements for health and safety – Article 3.1a

Testing for electric safety according to EN 60950-1 has been conducted. These are considered relevant and sufficient.

Protection requirements for electromagnetic compatibility – Article 3.1b

Testing for electromagnetic compatibility according to EN 301 489-1 and EN 301 489-17 has been conducted. These are considered relevant and sufficient.

Effective use of the radio spectrum – Article 3.2

Testing for radio test suites according to EN 300 328 & EN 301 893 have been conducted. These are considered relevant and sufficient.

Operate the device in 5150-5250 MHz frequency band for indoor use only.

### CE Mark Warning

This is a Class B product, in a domestic environment, this product may cause radio inter-

ference, in which case the user may be required to take adequate measures.  
This equipment may be operated in AT, BE, CY, CZ, DK, EE, FI, FR, DE, GR, HU, IE, IT, LU, MT, NL, PL, PT, SK, SL, ES, SE, GB, IS, LI, NO, CH, BG, RO, RT.

### Canada, Industry Canada (IC) Notices

This device complies with Industry Canada license-exempt RSS standard(s).  
Operation is subject to the following two conditions: (1) this device may not cause interference, and (2) this device must accept any interference, including interference that may cause undesired operation of the device.

### Radio Frequency (RF) Exposure Information

This equipment complies with IC RSS-102 radiation exposure limits set forth for an uncontrolled environment. This equipment should be installed and operated with minimum distance 25cm between the radiator & your body.

Cet équipement est conforme aux limites d'exposition aux rayonnements IC établies pour un environnement non contrôlé. Cet équipement doit être installé et utilisé avec un minimum de 25 cm de distance entre la source de rayonnement et votre corps.

### Canada, avis d'Industry Canada (IC)

Le présent appareil est conforme aux CNR d'Industrie Canada applicables aux appareils radio exempts de licence. L'exploitation est autorisée aux deux conditions suivantes : (1) l'appareil ne doit pas produire de brouillage, et (2) l'utilisateur de l'appareil doit accepter tout brouillage radioélectrique subi, même si le brouillage est susceptible d'en compromettre le fonctionnement.



#### WARNING!

- For product available in the USA/Canada market, only channel 1~11 can be operated. Selection of other channels is not possible.
- Pour les produits disponibles aux États-Unis / Canada du marché, seul le canal 1 à 11 peuvent être exploités. Sélection d'autres canaux n'est pas possible.
- This device and it's antennas(s) must not be co-located or operating in conjunction with any other antenna or transmitter except in accordance with IC multi-transmitter product procedures.
- Cet appareil et son antenne (s) ne doit pas être co-localisés ou fonctionner en association avec une autre antenne ou transmetteur.

**WARNING!**

- Under Industry Canada regulations, this radio transmitter may only operate using an antenna of a type and maximum (or lesser) gain approved for the transmitter by Industry Canada. To reduce potential radio interference to other users, the antenna type should be chosen so that the equivalent isotropically radiated power (e.i.r.p) is not more than that necessary for successful communication.
- Conformément à la réglementation d'Industrie Canada, le présent émetteur radio peut fonctionner avec une antenne d'un type et d'un gain maximal (ou inférieur) approuvé pour l'émetteur par Industrie Canada. Dans le but de réduire les risques de brouillage radioélectrique à l'intention des autres utilisateurs, il faut choisir le type d'antenne et son gain de sorte que la puissance isotrope rayonnée équivalente (p.i.r.e.) ne dépasse pas l'intensité nécessaire à l'établissement d'une communication satisfaisante.
- This radio transmitter (IC:3568A-RTGW00) has been approved by Industry Canada to operate with the antenna types listed below with the maximum permissible gain and required antenna impedance for each antenna type indicated. Antenna types not included in this list, having a gain greater than the maximum gain indicated for that type, are strictly prohibited for use with this device.
- Le présent émetteur radio (IC:3568A-RTGW00) a été approuvé par Industrie Canada pour fonctionner avec les types d'antenne énumérés ci-dessous et ayant un gain admissible maximal et l'impédance requise pour chaque type d'antenne. Les types d'antenne non inclus dans cette liste, ou dont le gain est supérieur au gain maximal indiqué, sont strictement interdits pour l'exploitation de l'émetteur.

Set	Ant.	Brand	P/N	Antenna Type	Connector	Gain (dBi)	
						2.4GHz	5GHz
1	1	PSA	RFDPA171300SBLB809	Dipole Antenna	Reversed-SMA	2.25	3.37
	2	PSA	RFDPA171300SBLB809	Dipole Antenna	Reversed-SMA	2.25	3.37
	3	PSA	RFDPA171300SBLB809	Dipole Antenna	Reversed-SMA	2.25	3.37
	4	PSA	RFDPA171300SBLB809	Dipole Antenna	Reversed-SMA	2.25	3.37
2	5	PSA	RFDPA171300SBLB810	Dipole Antenna	Reversed-SMA	2.25	3.37
	6	PSA	RFDPA171300SBLB810	Dipole Antenna	Reversed-SMA	2.25	3.37
	7	PSA	RFDPA171300SBLB810	Dipole Antenna	Reversed-SMA	2.25	3.37
	8	PSA	RFDPA171300SBLB810	Dipole Antenna	Reversed-SMA	2.25	3.37



**WARNING!**

- The device for the band 5150-5250 MHz is only for indoor usage to reduce potential for harmful interference to co-channel mobile satellite systems.
- Les dispositifs fonctionnant dans la bande 5150-5250 MHz sont réservés uniquement pour une utilisation à l'intérieur afin de réduire les risques de brouillage préjudiciable aux systèmes de satellites mobiles utilisant les mêmes canaux.

**NCC 警語**

經型式認證合格之低功率射頻電機，非經許可，公司、商號或使用者均不得擅自變更頻率、加大功率或變更原設計之特性及功能。低功率射頻電機之使用不得影響飛航安全及干擾合法通信；經發現有干擾現象時，應立即停用，並改善至無干擾時方得繼續使用。前項合法通信，指依電信法規定作業之無線電通信。低功率射頻電機須忍受合法通信或工業、科學及醫療用電波輻射性電機設備之干擾。



## Networks Global Hotline Information

Region	Country	Hotline Number	Service Hours	
Europe	Cyprus	800-92491	09:00-13:00 ; 14:00-18:00 Mon-Fri	
	France	0033-170949400	09:00-18:00 Mon-Fri	
	Germany	0049-1805010920		
		0049-1805010923 ( component support )		09:00-18:00 Mon-Fri 10:00-17:00 Mon-Fri
		0049-2102959911 ( Fax )		
	Hungary	0036-15054561	09:00-17:30 Mon-Fri	
	Italy	199-400089	09:00-13:00 ; 14:00-18:00 Mon-Fri	
	Greece	00800-44142044	09:00-13:00 ; 14:00-18:00 Mon-Fri	
	Austria	0043-820240513	09:00-18:00 Mon-Fri	
	Netherlands/ Luxembourg	0031-591570290	09:00-17:00 Mon-Fri	
	Belgium	0032-78150231	09:00-17:00 Mon-Fri	
	Norway	0047-2316-2682	09:00-18:00 Mon-Fri	
	Sweden	0046-858769407	09:00-18:00 Mon-Fri	
	Finland	00358-969379690	10:00-19:00 Mon-Fri	
	Denmark	0045-38322943	09:00-18:00 Mon-Fri	
	Poland	0048-225718040	08:30-17:30 Mon-Fri	
	Spain	0034-902889688	09:00-18:00 Mon-Fri	
	Portugal	00351-707500310	09:00-18:00 Mon-Fri	
	Slovak Republic	00421-232162621	08:00-17:00 Mon-Fri	
	Czech Republic	00420-596766888	08:00-17:00 Mon-Fri	
Switzerland-German	0041-848111010	09:00-18:00 Mon-Fri		
Switzerland-French	0041-848111014	09:00-18:00 Mon-Fri		
Switzerland-Italian	0041-848111012	09:00-18:00 Mon-Fri		
United Kingdom	0044-8448008340	09:00-17:00 Mon-Fri		
Ireland	0035-31890719918	09:00-17:00 Mon-Fri		
Russia and CIS	008-800-100-ASUS	09:00-18:00 Mon-Fri		
Ukraine	0038-0445457727	09:00-18:00 Mon-Fri		

English



Region	Country	Hotline Numbers	Service Hours
Asia-Pacific	Australia	1300-278788	09:00-18:00 Mon-Fri
	New Zealand	0800-278788	09:00-18:00 Mon-Fri
	Japan	0800-1232787	09:00-18:00 Mon-Fri 09:00-17:00 Sat-Sun
		0081-570783886 (Non-Toll Free)	09:00-18:00 Mon-Fri 09:00-17:00 Sat-Sun
		Korea	0082-215666868
	Thailand	0066-24011717 1800-8525201	09:00-18:00 Mon-Fri
	Singapore	0065-64157917	11:00-19:00 Mon-Fri
		0065-67203835 (Repair Status Only)	11:00-19:00 Mon-Fri 11:00-13:00 Sat
		Malaysia	0060-320535077
	Philippine	1800-18550163	09:00-18:00 Mon-Fri
	India	1800-2090365	09:00-18:00 Mon-Sat
	India(WL/NW)		09:00-21:00 Mon-Sun
	Indonesia	0062-2129495000 500128 (Local Only)	09:30-17:00 Mon-Fri 9:30 – 12:00 Sat
	Vietnam	1900-555581	08:00-12:00 13:30-17:30 Mon-Sat
	Hong Kong	00852-35824770	10:00-19:00 Mon-Sat
Americas	USA	1-812-282-2787	8:30-12:00 EST Mon-Fri
	Canada		9:00-18:00 EST Sat-Sun
	Mexico	001-8008367847	08:00-20:00 CST Mon-Fri 08:00-15:00 CST Sat



Region	Country	Hotline Numbers	Service Hours	
<b>Middle East + Africa</b>	Egypt	800-2787349	09:00-18:00 Sun-Thu	
	Saudi Arabia	800-1212787	09:00-18:00 Sat-Wed	
	UAE	00971-42958941	09:00-18:00 Sun-Thu	
	Turkey	0090-2165243000	09:00-18:00 Mon-Fri	
	South Africa	0861-278772	08:00-17:00 Mon-Fri	
	Israel		*6557/00972-39142800	08:00-17:00 Sun-Thu
			*9770/00972-35598555	08:30-17:30 Sun-Thu
<b>Balkan Countries</b>	Romania	0040-213301786	09:00-18:30 Mon-Fri	
	Bosnia Herzegovina	00387-33773163	09:00-17:00 Mon-Fri	
	Bulgaria		00359-70014411	09:30-18:30 Mon-Fri
			00359-29889170	09:30-18:00 Mon-Fri
	Croatia	00385-16401111	09:00-17:00 Mon-Fri	
	Montenegro	00382-20608251	09:00-17:00 Mon-Fri	
	Serbia	00381-112070677	09:00-17:00 Mon-Fri	
	Slovenia		00368-59045400	08:00-16:00 Mon-Fri
			00368-59045401	
	Estonia	00372-6671796	09:00-18:00 Mon-Fri	
	Latvia	00371-67408838	09:00-18:00 Mon-Fri	
	Lithuania-Kaunas	00370-37329000	09:00-18:00 Mon-Fri	
	Lithuania-Vilnius	00370-522101160	09:00-18:00 Mon-Fri	



**NOTE:** For more information, visit the ASUS support site at: <http://support.asus.com>

## VIP Member Warranty Notice

### VIP會員保固登錄通知

Global Site: <http://www.asus.com> VIP Registration: <http://vip.asus.com>

Dearest Customer,

Thank you for purchasing an ASUS product!

Register online\* immediately and:

- (1) Enjoy total warranty and protection for your ASUS product
- (2) Receive exclusive VIP Member privileges like:
  - The latest ASUS product news, promotional activities, benefits and discounts exclusive to VIP Members only
  - Software / firmware upgrade reminders

\* For more inquiries and details regarding guarantee and warranty matters, please visit the official website at <http://www.asus.com>.

親愛的客戶您好，感謝您購買華碩產品！

現在就上網登錄立即晉升為華碩VIP會員

- (1) 享有完整保固權益之保障
- (2) 尊爵VIP會員服務：
  - 最新的華碩產品訊息、第一手的促銷優惠、VIP會員獨享的專屬折扣
  - 軟體/韌體更新即時提醒
  - 不同於一般保固均自出場日起為起始日計算，上網註冊成功後，您的保固日期將以「購買當日」為起始日期（請保留蓋有經銷商店章受或單據或發票影本，於機台維修時出示，始享有此獨享服務）

\* 其他相關的保固說明細節，請上華碩官方網站查詢：<http://www.asus.com>。

#### For Australian Warranty Statement Only

\* ASUS products come with guarantees that connect be excluded under the Australian Consumer Law. You are entitled to a replacement or refund for a major failure and compensation for any other reasonably foreseeable loss or damage. You are also entitled to have the products repaired or replaced if the goods fail to be of acceptable quality and the failure does not amount to a major failure. You can find more information about the Australian Consumer Law on the ACCC website: [www.accc.gov.au](http://www.accc.gov.au) (see under "For Consumers" tab). ASUSTek Computer Inc. offers the Warranty in conjunction with any guarantees imposed by the Australian Consumer Law.





### VIP Member Copy VIP 會員收執聯

\* To immediately enjoy the VIP Member's enhanced service, we suggest that you register directly via the internet at <http://vip.asus.com>.

\* 為即時享有 VIP 會員級服務，建議您直接上網登錄註冊

#### Product Information 產品資料

Product Model 產品型號: \_\_\_\_\_

Product Number (P/N) 產品序號: \_\_\_\_\_

Date of Purchase 購買日期: \_\_\_\_\_ dd \_\_\_\_\_ mm \_\_\_\_\_ yy

Dealer name/shop seal 經銷商名稱/店章 Paste product barcode 黏貼產品條碼處

Retail sales representative name 門市業務姓名: \_\_\_\_\_

\* To ensure the validity of the warranty, please fill in the shop name, name of servicing personnel, date of purchase and other information accurately.

\* 為保障您的權益，請確實填寫店名、承辦業務人員、購買日期等資料。

### Dealer Copy 經銷商收執聯

\* Dealer service partners, fill in the product information as accurately as possible

\* 經銷商業務夥伴，請務必填寫產品資料，並確實保管收執，以維護客戶與保障您的個人權益。

#### Product Information 產品資料

Product Model 產品型號: \_\_\_\_\_

Product Number (P/N) 產品序號: \_\_\_\_\_

Date of Purchase 購買日期: \_\_\_\_\_ dd \_\_\_\_\_ mm \_\_\_\_\_ yy

Dealer name/shop seal 經銷商名稱/店章 Paste product barcode 黏貼產品條碼處

Retail sales representative name 門市業務姓名: \_\_\_\_\_

\* To ensure the validity of the warranty, please fill in the shop name, name of servicing personnel, date of purchase and other information accurately.

\* 為保障您的權益，請確實填寫店名、承辦業務人員、購買日期等資料

\* Please mail back this form to your local ASUS sales representative for ASUS Advantage mileage program point accumulation (dependent on local sales policies / web availability).

\* 本收執聯與經銷商活動積點辦法實際執行，由各區華碩人員公告之

