

SENAO

Wireless Outdoor Bridge SL-2511BG PLUS

User's Manual

Before operating the unit, please read this manual thoroughly, and retain it for future reference.



Contents

Chapter 1 – Hardware Installation

Before You Start	1-1
Locate the Router/Bridge and Inline Power Injector Ports	1-2
Preparing Installation	1-3
Outdoor Installation	1-5

Chapter 2 – Quick Setup

Configure Requirements	2-1
Configure the RB	2-4
Configure the RB as bridge mode Root AP	2-5
Configure the RB as Root AP with PPPoE Ethernet connection	2-11
Configure the RB as Root AP with dynamic IP address Ethernet	2-13
Configure the RB as Root AP with static IP address Ethernet	2-15
Configure the RB as Remote Extension Bridge	2-17

Chapter 3 – Further Configuration

Configure Requirements	3-2
Configure the RB	3-5
Security	3-20
Configure DHCP server	3-24
Configure Virtual Server	3-25
Configure Routing Table	3-27
Configure Bridge	3-28
Configure SNMP	3-29
Configuration Review and Apply the New Settings	3-30
Utility	3-31

Chapter 4 – Command Line Interface

Appendix A – Specifications

Appendix B – Default Settings

Appendix C – Regulatory Compliance Information

Chapter 1 Hardware Installation

This chapter describes the procedures for installing the Outdoor Router/Bridge.

Note: Before you mount the Router/Bridge to a mast or on the side of a building, be sure to configure and test the device first.

Here's what you'll find in this chapter:

- _ Before You Start
- _ Locate the Router/Bridge Ports
- _ Preparing for Installation
- _ Outdoor Installation

Before You Start

After unpacking the system, make sure the following items are present and in good condition, as shown in **Figure 1.1**:

1. MIL-C-5015 style Ethernet Cable
2. Router/Bridge
3. Reverse Polarity-N Female RF Cable
4. Cross over Ethernet Cable
5. Mast Mounting Kit
6. Wall Mounting Kit
7. MIL-C-5015 style RS232 Console Port Cable
8. Inline Power Injector
9. AC Power Cord
10. User's Manual

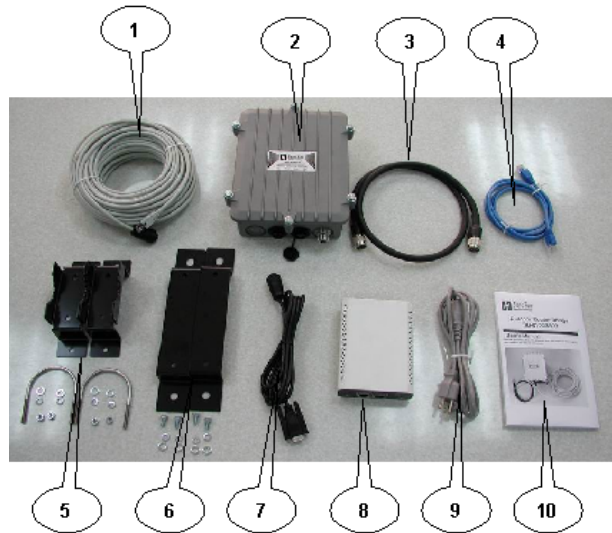


Figure 1-1 Package Contents

Locate the Router/Bridge and Inline Power Injector Ports as shown in Figure 1.2

- Special Ethernet port 1 for connecting the MIL-C-5015 style Ethernet Cable
- Special serial port 2 for connecting the MIL-C-5015 style RS-232 console port cable
- Reverse Polarity-N Male connector 3 for connecting the antenna or RF cable.
- Power & Data output port 4 for connecting the other of the MIL-C-5015 style Ethernet Cable
- Data input port 5 for connecting the Ethernet Cable to a Hub Switch Router or a PC.
- AC power input port 6 for connecting the power cord.

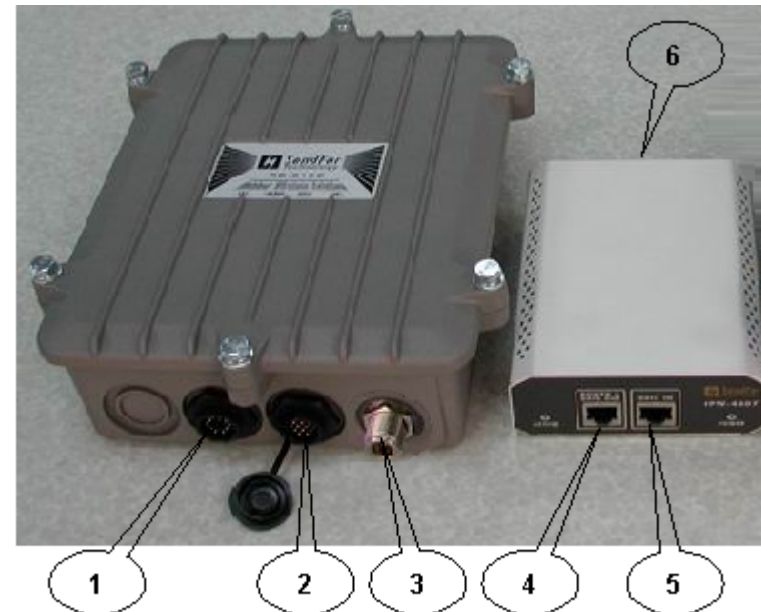


Figure 1-2 Overview Router/Bridge and Inline Power Injector

Preparing Installation

Before installing your Outdoor Wireless LAN system for your outdoor application in a hard-to-reach location, we recommend that you configure and test all the devices first.

For configuring the Outdoor Router/Bridge, you need follow the quick steps below to power up your Router/Bridge:

Step 1: With the unit powered off, attach one end of the RF cable to the antenna connector and then connect the antenna to the other end of the RF cable as shown in **Figure 1.3**.

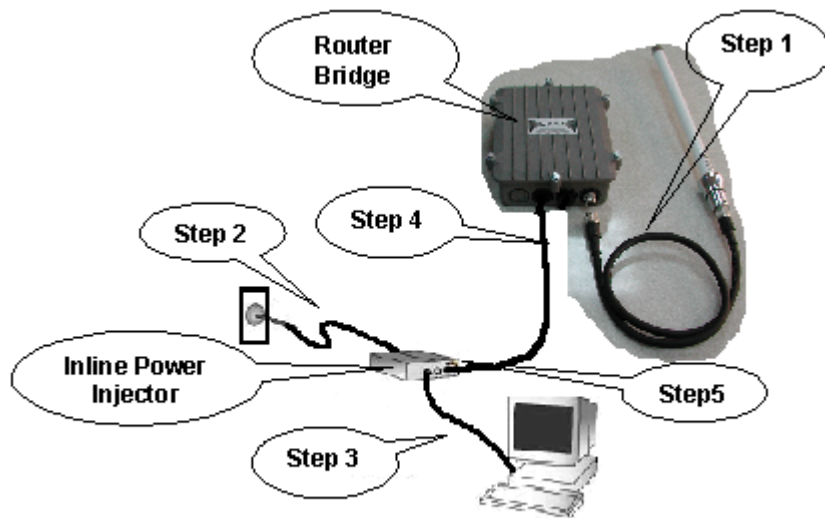


Figure 1.3 – Hardware Installation

Step 2 Plug the female end of the power cord into the Inline Power Injector, and then plug the male end of the power cord into a power outlet or power strip. The Power LED on the front of the Inline Power Injector will light up.

Step 3 Run the cross over Ethernet cable (included in your package) from Data Input Port (on the front of the Inline Power Injector) to the Ethernet Port on a PC.

NOTE: This connection is required for setting up initial configuration

information. After configuration is completed, this cable will be removed, and then you should run an Ethernet cable from Data Input Port (on the front of the Inline Power Injector) to the LAN connection (such as to a hub, bridge or directly into a patch panel).

Step 4 Plug the MIL-C-5015 style Ethernet connector into the Special Ethernet port on the back of the Router/Bridge.

Step 5 Plug the RJ-45 Ethernet connector (the other end of the Special Ethernet cable) into the Power & Data Output Port on the front of the Inline Power Injector.

When the Router/Bridge receives power over the Ethernet cable, the Router/Bridge will start its boot sequence and the Active LED on the front of the Inline Power Injector will light up.

You can configure the Router/Bridge using the HTML browser, such as Internet Explorer or Netscape Navigator from a remote host or PC. (Please consult the “Quick Setup” section).

Outdoor Installation

Outdoor Router/Bridge device can be mounted on the side of a building or mounted to an antenna mast as shown in Figure 1.5 and Figure 1.6.

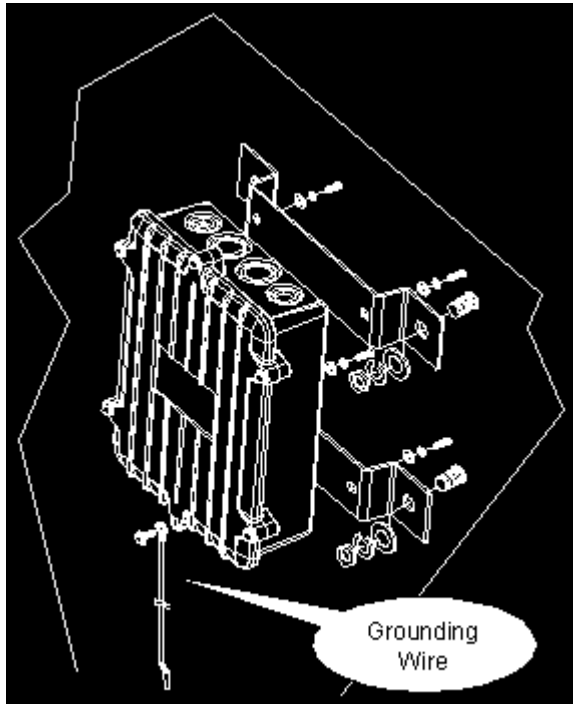


Figure 1.5 Wall Mounting

typically result in poor performance, we advise you to always mount the Outdoor Router/Bridge and antenna to a mast.

Antenna Mast Requirements

To accommodate the outdoor antennas, the antenna mast must satisfy the following requirements:

a. The construction of the mast must be of a sturdy, weatherproof and no corrosive material like for example galvanized or stainless steel construction pipe.

A wall (side) mount allows for mounting an antenna (mast) on the side of a building or on the side of an elevator penthouse. This will provide a convenient mounting location when the roof overhang is not excessive and/or the location is high enough to provide a clear line of sight.

In most situations mounting an antenna directly to the wall will not allow you to properly align the antenna with the corresponding antenna at the opposite end of your wireless link. As poor alignment will

b. Typical diameter of the mast should be between 35 mm (1.4 in.) and 41 mm (1.625 in.). Subject to the type of antenna that you intend to install other diameters may be possible as well.

c. The height of the antenna mast must be sufficient to allow the antenna to be installed at least 1.5 m (5 ft.) above the peak of roof. If the roof is metal, then the height of the antenna should be a minimum of 3 m (10 ft) above the roof.

d. The mast or wall-bracket must be free from any substance that may prevent a good electrical connection with the antenna; for example, paint.

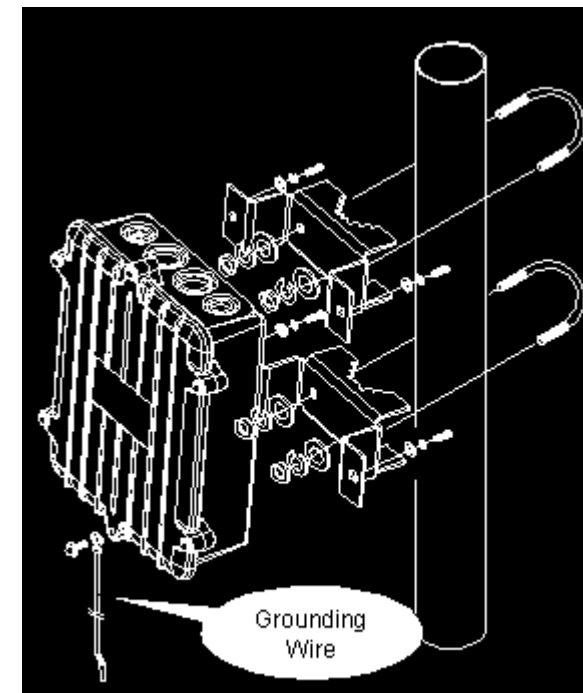


Figure 1.6 Mast Mounting

wall outlet.

The grounding system must comply with the National Electrical Code and safety standards that apply in your country. Always check with a

Grounding

A safety grounding system is necessary to protect your outdoor installation from lightning strikes and the build-up of static electricity. So direct grounding of the antenna mast, Outdoor Router/Bridge and Surge Arrester is very important. The Outdoor Router/Bridge has built in Surge Arrester. So Mounting the Outdoor Router/Bridge on the antenna mast, you have to connect the Outdoor Router/Bridge to the same grounding system with the AC

qualified electrician if you are in doubt as to whether your outdoor installation is properly grounded.

Antenna Alignment

For optimal performance of your wireless link, make sure that the antennas are properly aligned (facing one another “eye-to-eye”). To align the antennas:

_ Use a pair of binoculars and/or a map of the area and compass to point the antennas to one another.

_ Use the Utility- “Wireless Link Info” in the Web Configure as described in the "Utility " section to analyze the radio link quality. The “Wireless Link Info” will enable you to display the levels of signal strength and link quality. Looking at the Wireless Link Info screen, you can interactively optimize antenna alignment if required, by making small modifications in the antenna orientation.

_ Alternatively, consult a professional Antenna Installation Service to optimize the antenna alignment. Omni-directional antennas are characterized by a wide radiation pattern. Therefore alignment of this type of antennas is less critical than for directional antennas.

Chapter 2 Quick Setup

This chapter describes how to easy setup and configure the Outdoor Wireless Router/Bridge System (RB). The RB can be configured into two roles: Root Access Point (Root AP) and Remote Extension Bridge (Remote RB) to accomplish the broadband wireless point-to-point and multipoint systems (as shown in **Figure 2-1**). Users can use a LAN-attached (wired or wireless) computer to configure the RB through a web browser or a telnet session on a LAN computer.

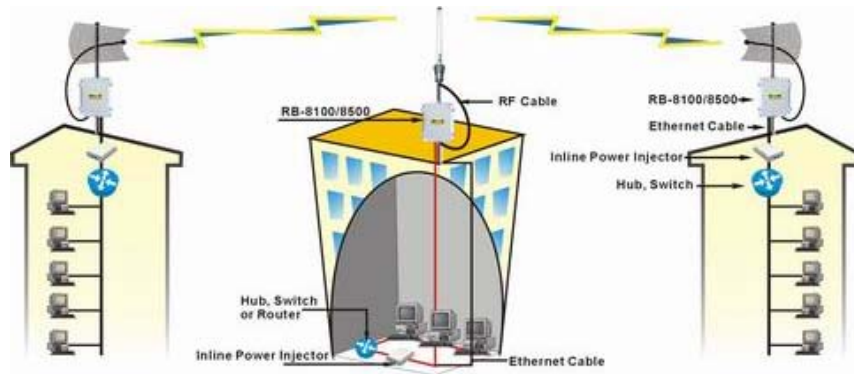


Figure 2-1

In this chapter, we only describe how to quickly configure the RB with a web browser. For detailed descriptions of the many configuration parameters and network configuration, refer to Chapter 3.

Configure Requirements

Before setup, we must install RB first

1. Connect power adaptor and power on the RB
2. Connect the Ethernet cable for connecting the RB to the network

3. Connect a computer to the same network with this RB
4. Start your Microsoft Internet Explorer web browser program from a LAN-attached computer. To access the web interface of the RB, you have to disable **Access the Internet using a proxy** server function in **View / Internet Options / Connection** as shown in **Figure 2-2** or add the IP address of the AP (default IP address is **192.168.2.1**) to **Bypass proxy server for local addresses** as shown in **Figure 2-3**.
5. Type the IP address and HTTP port of the RB (default IP address is **192.168.2.1**) in the address field (**http://192.168.2.1:2000/**) and press **Enter**. Make sure that the IP addresses of RB and your computer are in the same subnet.
6. After the connection is established, you will see the User Identification Window as shown in **Figure 2-4** Enter the proper **User Name** and **Password** to see the web user interface of the RB. The default user name and password is **root** and **root**, respectively.

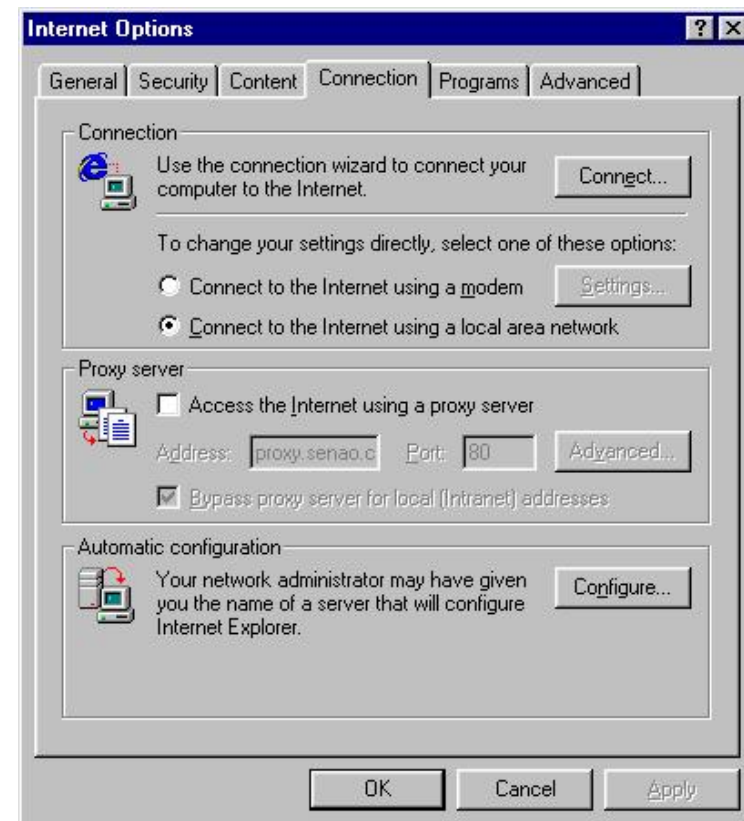


Figure 2-2

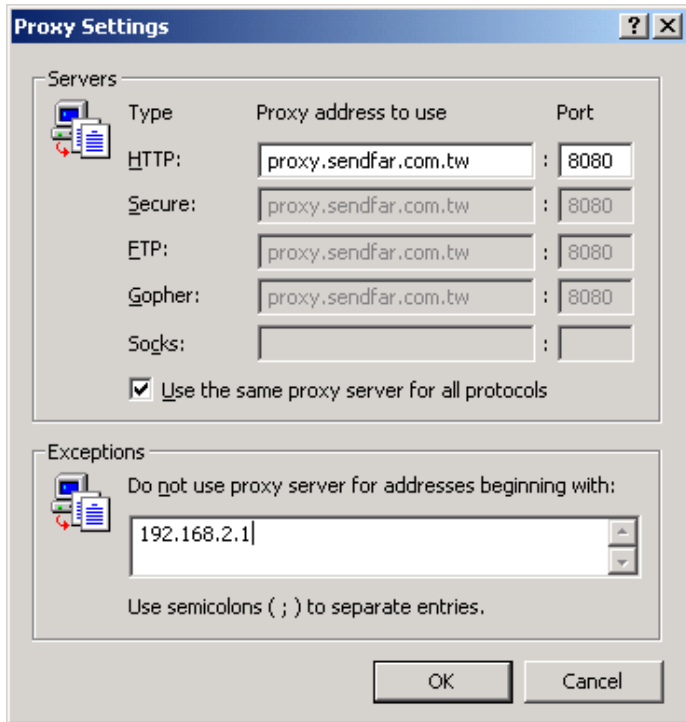


Figure 2-4

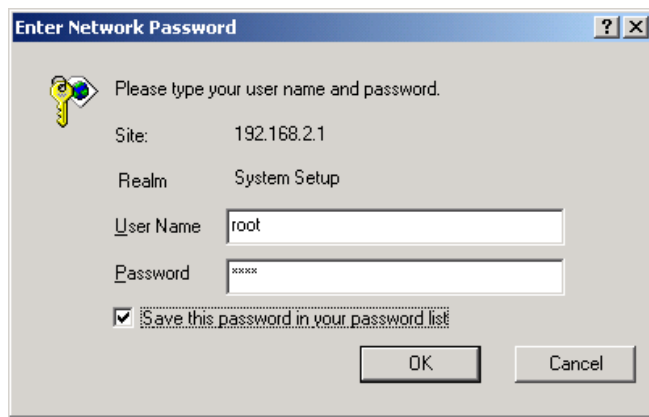


Figure 2-3

Configure the RB

The RB can be configured into two operation roles:

Root Access Point (Root AP) and Remote Extension Bridge (Remote RB), the Root AP can performed in four operation modes

1. Wireless Access bridge
2. Wireless Access router with PPPoE Ethernet connection
3. Wireless Access router with dynamic IP address Ethernet
4. Wireless Access router with static IP address Ethernet

The RB is shipped with default configuration is as a bridge between an Ethernet and wireless network. Users simply need to attach the RB to your wired LAN. If users would like to configure the RB, please refer to the following procedures.

The web user interface can be grouped into **Quick setup, Basic Configuration, Advanced Configuration** and **Utility** as shown in **Figure 2-5**.

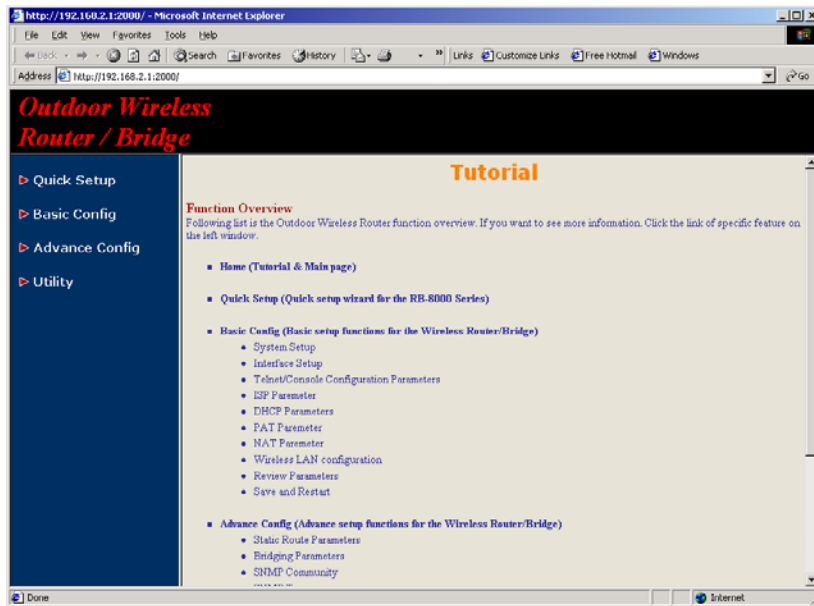


Figure 2-5

The left frame contains, in a tree structure, the contents of the RB web configuration interface. Move through the tree by clicking on an icon to expand or collapse the tree. The nodes on the tree represent web pages that allow you to view and modify the parameters of the RB. In here, you can click the **Quick setup** and following the setup wizard flow to configure this RB step by step.

Configure the RB as bridge mode Root AP

Step 1: Configure the operation role of this RB (as shown in **Figure 2-6**) Click **Quick Config**, select **Root Access Point** to setup this RB which play the Root AP role and then click **NEXT** at the bottom of this page to complete the modification of this page.

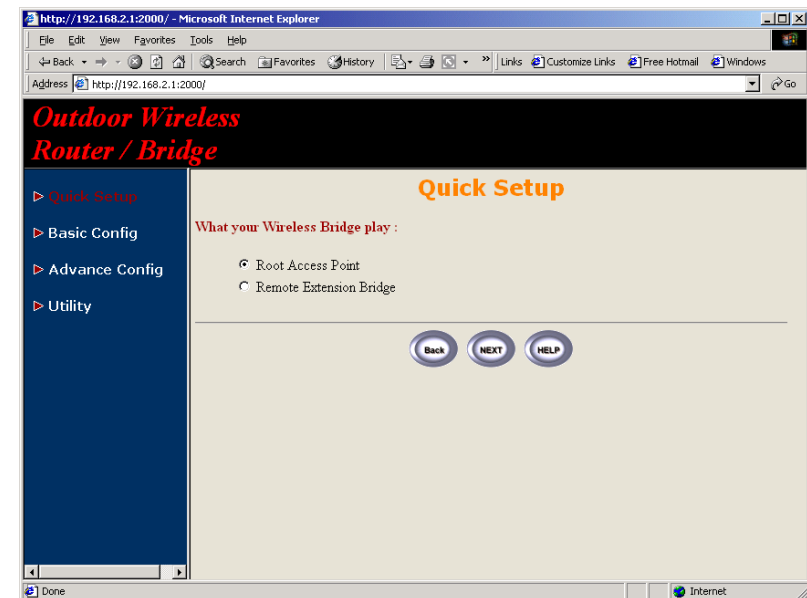


Figure 2-6

Step 2: Configure the operation mode of this RB (as shown in **Figure 2-7**)
Click **Quick Config**, select **Wireless Access Point (Bridge mode)** to select the bridge operation mode and then click **NEXT** at the bottom of this page to complete the modification of this page.

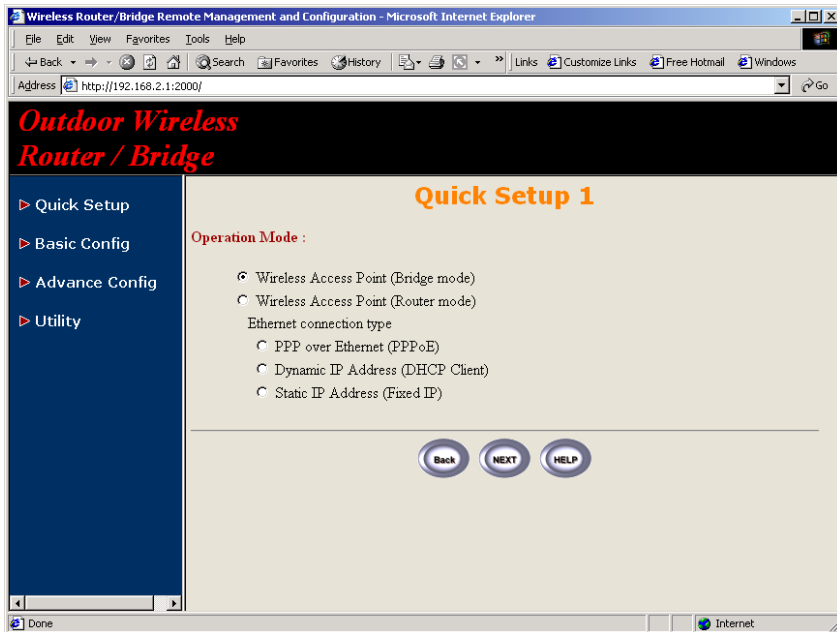


Figure 2-7

Step 3: Configure TCP/IP parameters (as shown in **Figure 2-8**)
In this page, enter the **Bridge IP Address** (default is **192.168.2.1**) and **Bridge Subnet Mask** (default is **255.255.255.0**) that are suitable for your network domain. After that, click **NEXT** at the bottom of this page to complete the modification of this page.

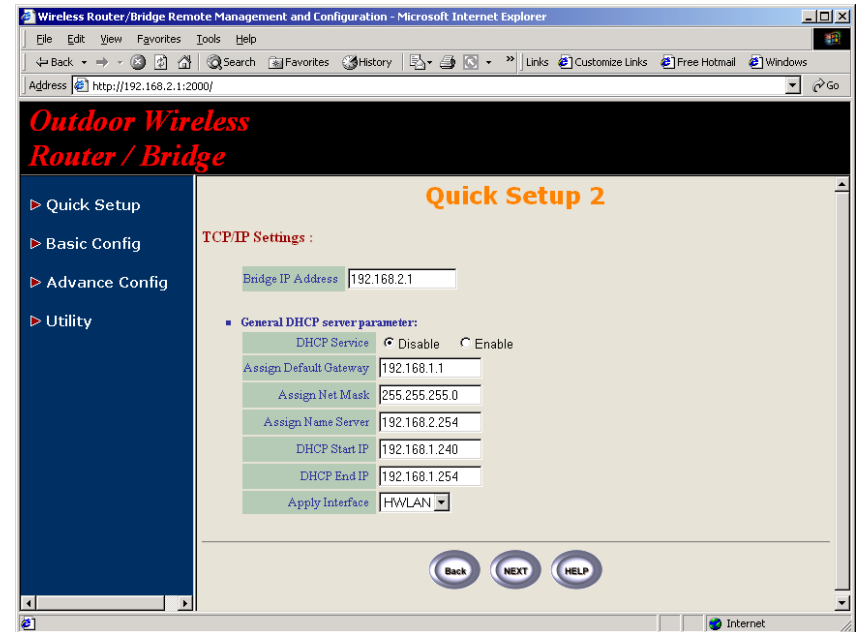


Figure 2-8

Step 4: Configure IEEE 802.11b WLAN parameters (as shown in *Figure 2-9*)

In this page, enter the **Channel** (default is **1**), **rts Threshold** (default is **250**), **frag Threshold** (default is **1600**), **SSID** (default is **rb8100**) and **Station Name** (default is **ap**) that are suitable for your radio network and then you can click radio button to disable WEP or enable 64/128 bit **WEP services** (default is **disable**), if WEP is enabled, you must input corresponded **Default Key** index and **WEP Key**. After that, click **NEXT** at the bottom of this page to complete the modification of this page.

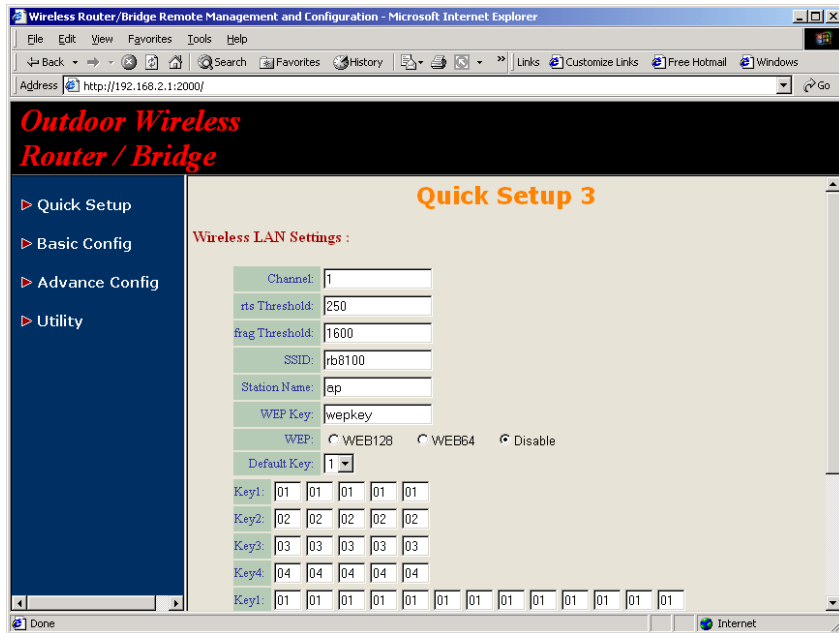


Figure 2-9

Step 5: Preview the configured setting of this RB (as shown in *Figure 2-10*)

This page will present the current settings of the RB to the system administrator, the operator can easily view all running configuration in here. After that, click **Save** button to store the changes to the RB.

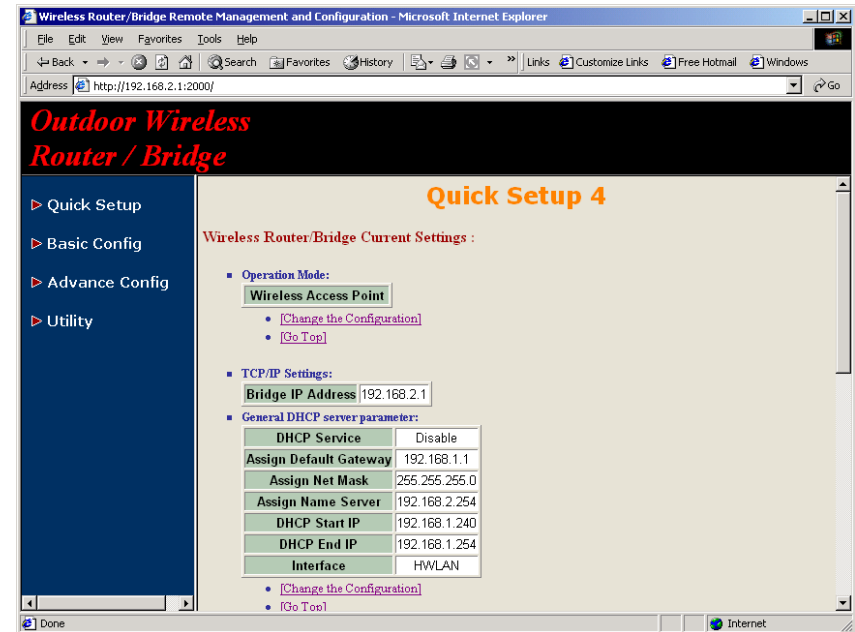


Figure 2-10

Step 6: Restart this RB (as shown in *Figure 2-11*)

In this page, you can click the **RESTART** button at the bottom of this page to take effect the previous configuration changes.

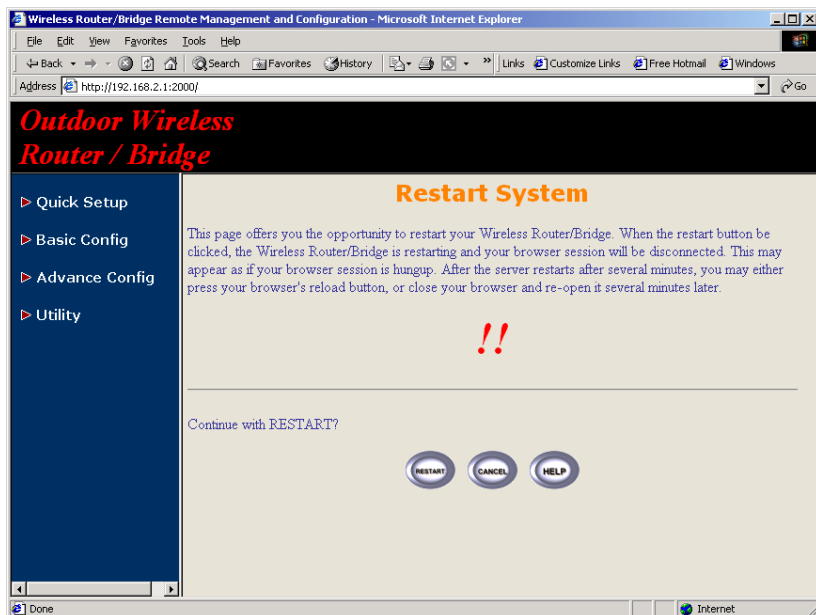


Figure 2-11

Configure the RB as Root AP with PPPoE Ethernet connection

Step 1: Configure the operation role of this RB (as shown in *Figure 2-6*)

Click **Quick Config**, select **Root Access Point** to setup this RB which play the Root AP role and then click **NEXT** at the bottom of this page to complete the modification of this page.

Step 2: Configure the operation mode of this RB (as shown in *Figure 2-7*)

Click **Quick Config**, select **Wireless Access Point (Router mode)** to setup this RB operated in routing mode, you also need to select the Ethernet connection type in **PPP over Ethernet (PPPoE)**, and then click **NEXT** at the bottom of this page to complete the modification of this page.

Step 3: Configure TCP/IP parameters (as shown in *Figure 2-12*)

In this page, enter the **Wireless interface IP** (default is **192.168.1.1**) and **Wireless interface Net Mask** (default is **255.255.255.0**) that are suitable for your wireless network, and specify the **Ethernet IP address** (default is **192.168.2.1**) and **Ethernet Net Mask** (default is **255.255.255.0**) of the Ethernet interface. And then, if you are an ADSL subscriber, you may specify that your personal ISP provided **PPPoE Username** and **PPPoE Password** to enable ADSL broadband access.

Sometimes users have to conFigure 2-correct network settings in Gateway and DNS tab of your wireless client computers to surf the Internet, or you can enable **DHCP server services** for all wireless clients (default DHCP server setting of the RB is **disable** in wireless network). In general DHCP server parameters segment, input **Assign Default Gateway** (default is **192.168.2.254**), **Assign Net Mask** (default is **255.255.255.0**), **Assign Name Server** (default is **192.168.1.1**), **DHCP Start IP** (default is **192.168.1.240**), **DHCP End IP** (default is **192.168.1.250**) and choice **Apply Interface** on **H WLAN** to made your DHCP server services available for wireless network, at finally click **NEXT** at the bottom of this page to complete the modification of this page.

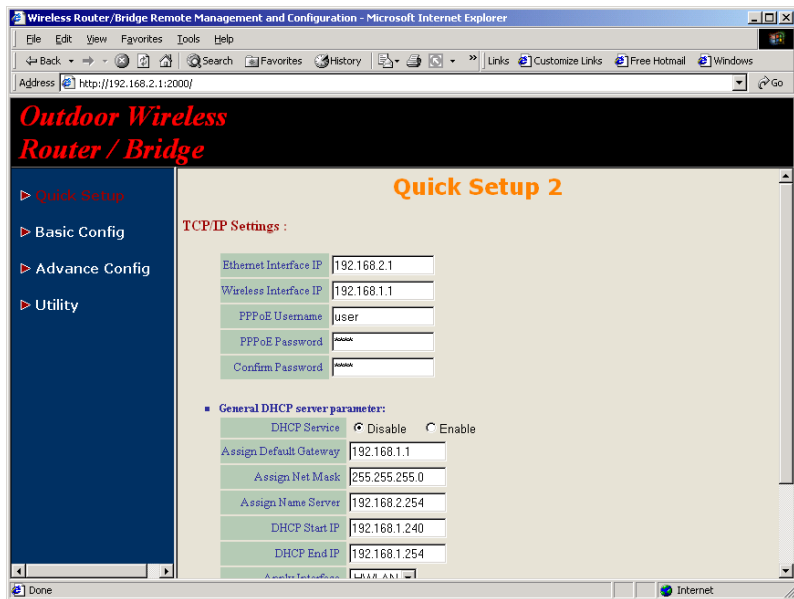


Figure 2-12

Step 4: Configure IEEE 802.11b WLAN parameters (as shown in *Figure 2-9*)

In this page, enter the **Channel** (default is **1**), **rts Threshold** (default is **250**), **frag Threshold** (default is **1600**), **SSID** (default is **rb8100**) and **Station Name** (default is **ap**) that are suitable for your radio network and then you can click radio button to disable WEP or enable 64/128 bit **WEP services** (default is **disable**), if WEP is enabled, you must input corresponded **Default Key** index and **WEP Key**. After that, click **NEXT** at the bottom of this page to complete the modification of this page.

Step 5: Preview the configured setting of this RB (as shown in *Figure 2-10*)

This page will present the current settings of the RB to the system administrator, the operator can easy to view all running configuration in here. After that, click **Save** button to store the changes to the RB.

Step 6: Restart this RB (as shown in *Figure 2-11*)

In this page, you can click the **RESTART** button at the bottom of this page to take effect the previous configuration changes.

Configure the RB as Root AP with dynamic IP address Ethernet

Step 1: Configure the operation role of this RB (as shown in *Figure 2-6*)

Click **Quick Config**, select **Root Access Point** to setup this RB which play the Root AP role and then click **NEXT** at the bottom of this page to complete the modification of this page.

Step 2: Configure the operation mode of this RB (as shown in *Figure 2-7*)

Click **Quick Config**, select **Wireless Access Point (Router mode)** to setup this RB operated in routing mode, you also need to select the Ethernet connection type in **Dynamic IP address (DHCP Client)**, and then click **NEXT** at the bottom of this page to complete the modification of this page.

Step 3: Configure TCP/IP parameters (as shown in *Figure 2-13*)

In this page, enter the **Wireless interface IP** (default is **192.168.1.1**) and **Wireless interface Net Mask** (default is **255.255.255.0**) that are suitable for your wireless network.

Sometimes users have to configure correct network settings in Gateway and DNS tab of your wireless client computers to surf the Internet, or you can enable **DHCP server services** for all wireless clients (default DHCP server setting of the RB is **disable** in wireless network). In general DHCP server parameters segment, input **Assign Default Gateway** (default is **192.168.1.1**), **Assign Net Mask** (default is **255.255.255.0**), **Assign Name Server** (default is **192.168.2.254**), **DHCP Start IP** (default is **192.168.1.240**), **DHCP End IP** (default is **192.168.1.250**) and choice **Apply Interface** on **H WLAN** to made your DHCP server services available for wireless network, at finally click **NEXT** at the bottom of this page to complete the modification of this page.

Step 4: Configure IEEE 802.11b WLAN parameters (as shown in *Figure 2-9*)

In this page, enter the **Channel** (default is **1**), **rts Threshold** (default is **250**), **frag Threshold** (default is **1600**), **SSID** (default is **rb8100**) and **Station Name** (default is **ap**) that are suitable for your radio network and then you can click radio button to disable WEP or enable 64/128 bit **WEP services** (default is **disable**), if WEP is enabled, you must input corresponded **Default Key** index and **WEP Key**. After that, click **NEXT** at the bottom of this page to complete the modification of this page.

Step 5: Preview the configured setting of this RB (as shown in *Figure 2-10*)

This page will present the current settings of the RB to the system administrator, the operator can easily view all running configuration in here. After that, click **Save** button to store the changes to the RB.

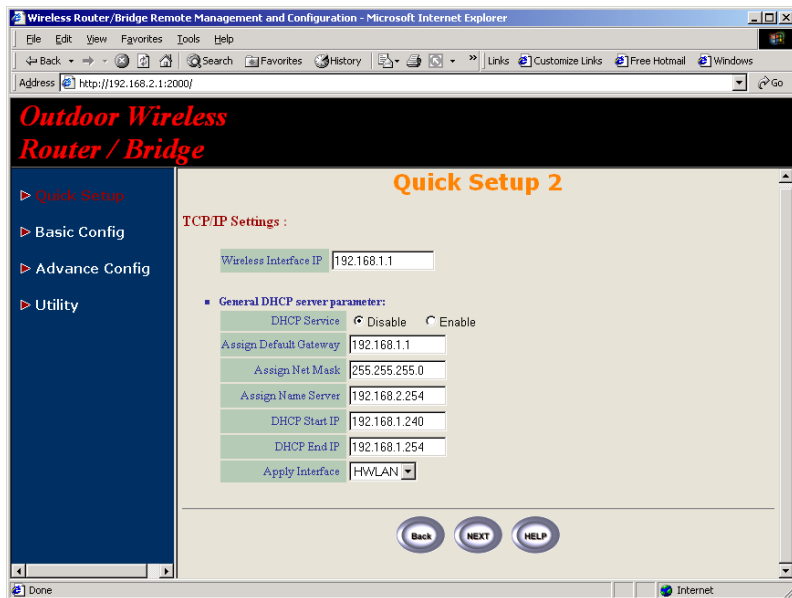


Figure 2-13

Step 6: Restart this RB (as shown in **Figure 2-11**)
In this page, you can click the **RESTART** button at the bottom of this page to take effect the previous configuration changes.

Configure the RB as Root AP with static IP address Ethernet

Step 1: Configure the operation role of this RB (as shown in **Figure 2-6**)
Click **Quick Config**, select **Root Access Point** to setup this RB which play the Root AP role and then click **NEXT** at the bottom of this page to complete the modification of this page.

Step 2: Configure the operation mode of this AP (as shown in **Figure 2-7**)
Click **Quick Config**, select **Wireless Access Point (Router mode)** to setup this RB operated in routing mode, you also need to select the Ethernet connection type in **Static IP address (Fixed IP)**, and then click **NEXT** at the bottom of this page to complete the modification of this page.

Step 3: Configure TCP/IP parameters (as shown in **Figure 2-14**)
In this page, enter the **Wireless interface IP** (default is **192.168.1.1**) and **Wireless interface Net Mask** (default is **255.255.255.0**) that are suitable for your wireless network, and specify the **Ethernet IP address** (default is **192.168.2.1**) and **Ethernet Net Mask** (default is **255.255.255.0**) of the Ethernet interface. Specify the **Default Gateway** (Default is **192.168.2.254**) as the IP Address of the ADSL/Cable modem connected to the RB or the IP Address of the Gateway in your Ethernet environment and the IP address of the DNS servers provided by your ISP in the **DNS server** (Default is **192.168.2.254**) parameter.

Sometimes users have to configure correct network settings in Gateway and DNS tab of your wireless client computers to surf the Internet, or you can enable **DHCP server services** for all wireless clients (default DHCP server setting of the RB is **disable** in wireless network). In general DHCP server parameters segment, input **Assign Default Gateway** (default is **192.168.1.1**), **Assign Net Mask** (default is **255.255.255.0**), **Assign Name Server** (default is **192.168.2.254**), **DHCP Start IP** (default is **192.168.1.240**), **DHCP End IP** (default is **192.168.1.250**) and choice **Apply Interface** on **HWLAN** to made your DHCP server services available for wireless network, at finally click **NEXT** at the bottom of this page to complete the modification of this page.

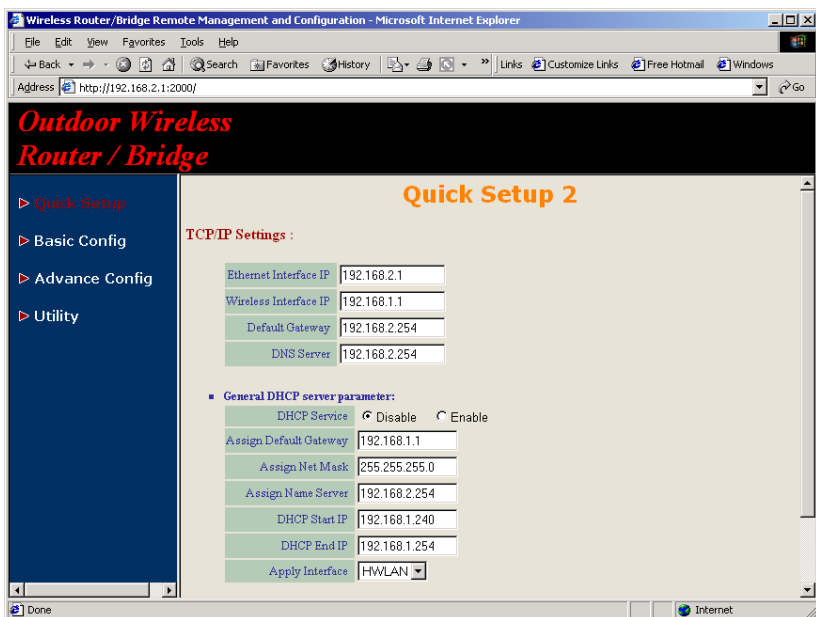


Figure 2-14

Step 4: Configure IEEE 802.11b WLAN parameters (as shown in *Figure 2-9*)

In this page, enter the **Channel** (default is **1**), **rts Threshold** (default is **250**), **frag Threshold** (default is **1600**), **SSID** (default is **rb8100**) and **Station Name** (default is **ap**) that are suitable for your radio network and then you can click radio button to disable WEP or enable 64/128 bit **WEP services** (default is **disable**), if WEP is enabled, you must input corresponded **Default Key** index and **WEP Key**. After that, click **NEXT** at the bottom of this page to complete the modification of this page.

Step 5: Preview the configured setting of this RB (as shown in *Figure 2-10*)

This page will present the current settings of the RB to the system administrator, the operator can easy to view all running configuration in here. After that, click **Save** button to store the changes to the RB.

Step 6: Restart this RB (as shown in *Figure 2-11*)

In this page, you can click the **RESTART** button at the bottom of this page to take effect the previous configuration changes.

Configure the RB as Remote Extension Bridge

Step 1: Configure the operation role of this RB (as shown in *Figure 2-6*) Click **Quick Config**, select **Remote Extension Bridge** to setup this RB which play the Remote Bridge role and then click **NEXT** at the bottom of this page to complete the modification of this page.

Step 2: Configure TCP/IP parameters (as shown in *Figure 2-14*)

In this page, enter the **Wireless interface IP** (default is **192.168.1.1**) and **Wireless interface Net Mask** (default is **255.255.255.0**) that are suitable for your wireless network, and specify the **Ethernet IP address** (default is **192.168.2.1**) and **Ethernet Net Mask** (default is **255.255.255.0**) of the Ethernet interface. Specify the **Default Gateway** (Default is **192.168.2.254**) as the Wireless IP Address of the Root RB and the IP address of the DNS servers provided by your ISP in the **DNS server** (Default is **192.168.2.254**) parameter.

Sometimes users have to configure correct network settings in Gateway and DNS tab of your wireless client computers to surf the Internet, or you can enable **DHCP server services** for all wireless clients (default DHCP server setting of the RB is **disable** in wireless network). In general DHCP server parameters segment, input **Assign Default Gateway** (default is **192.168.1.1**), **Assign Net Mask** (default is **255.255.255.0**), **Assign Name Server** (default is **192.168.2.254**), **DHCP Start IP** (default is **192.168.1.240**), **DHCP End IP** (default is **192.168.1.250**) and choice **Apply Interface** on **HWLAN** to made your DHCP server services available for wireless network, at finally click **NEXT** at the bottom of this page to complete the modification of this page.

Step 3: Configure IEEE 802.11b WLAN parameters (as shown in *Figure 2-9*)

Make sure the **SSID** parameter is same with the configuration of the Root RB.

In this page, enter the **Channel** (default is **1**), **rts Threshold** (default is **250**), **frag Threshold** (default is **1600**), **SSID** (default is **rb8100**) and **Station Name** (default is **ap**) that are suitable for your radio network and then you can click radio button to **disable** WEP or **enable** 64/128 bit **WEP services** (default is **disable**), if WEP is enabled, you must input corresponded **Default Key** index and **WEP Key**. After that, click **NEXT** at the bottom of this page to complete the modification of this page.

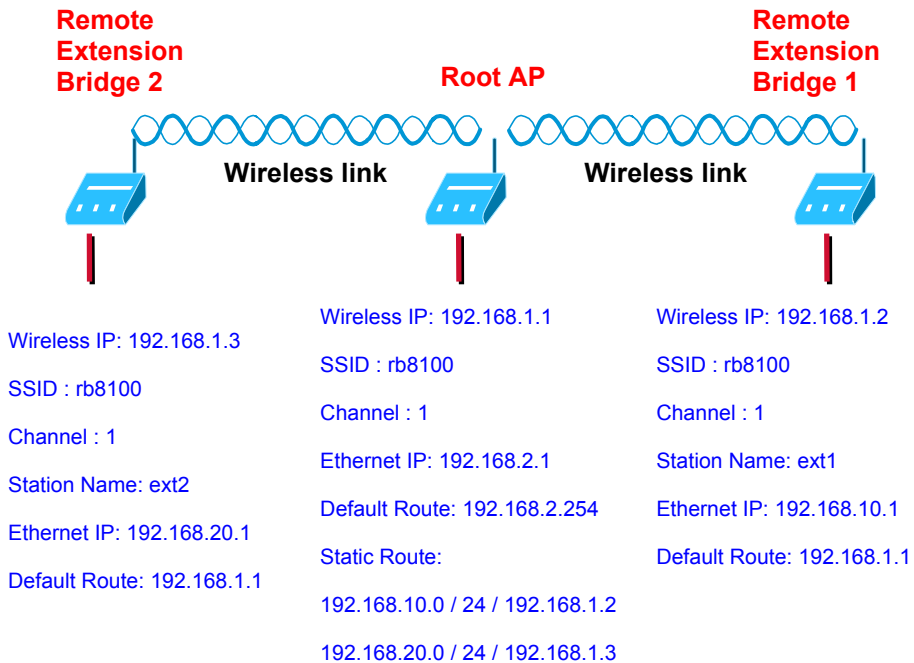
Step 4: Preview the configured setting of this RB (as shown in *Figure 2-10*)

This page will present the current settings of the RB to the system administrator, the operator can easily view all running configuration in here. After that, click **Save** button to store the changes to the RB.

Step 5: Restart this RB (as shown in *Figure 2-11*)

In this page, you can click the **RESTART** button at the bottom of this page to take effect the previous configuration changes.

Hint: Users may to configure correct network settings as following sample



Chapter 3 Further Configuration

In this chapter, we give more detailed descriptions of the network configuration and utilities usage.

The RB can be setup as the Root Access Point (Root AP) or Remote Extension Bridge (Remote RB).

- Root Access Point (Root AP): it can be performed in four operation modes:
 1. Wireless Access bridge
 2. Wireless Access router with PPPoE Ethernet connection
 3. Wireless Access router with dynamic IP address Ethernet
 4. Wireless Access router with static IP address Ethernet
- Remote Extension Bridge (Remote RB),

To create an Outdoor Point-to-Multipoint network (as shown in **Figure 3-1**), select a centrally located station that is able to send and receive from every other station in the network. This station is your “Root AP”. Each of the other stations is setup as “Remote RB”.

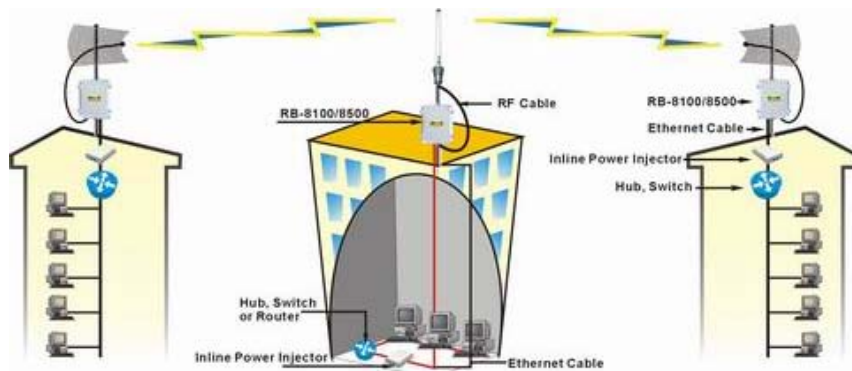


Figure 3-1

3-1 Configure Requirements

The RB is shipped with configuration that can be utilized right out of the box. Default configuration is as a bridge between an Ethernet and wireless network. Users simply need to attach the RB to your wired LAN. Default wireless SSID is **rb8100**, respectively. If users would like to configure the RB, please refer to the following procedures.

1. Start your Microsoft Internet Explorer web browser program from a LAN-attached computer. To access the web interface of the RB, you have to disable **Access the Internet using a proxy** server function in **View / Internet Options / Connection** as shown in **Figure 3-2** or add the IP address of the RB (default IP address is **192.168.2.1**) to **Bypass proxy server for local addresses** as shown in **Figure 3-3**.
2. Type the IP address and HTTP port of the RB (default IP address is **192.168.2.1**) in the address field (**http://192.168.2.1:2000/**) and press **Enter**. Make sure that the IP addresses of RB and your computer are in the same subnet.
3. After the connection is established, you will see the User Identification Window as shown in **Figure 3-4**. Enter the proper **User Name** and **Password** to see the web user interface of the RB. The default user name and password is **root** and **root**, respectively.

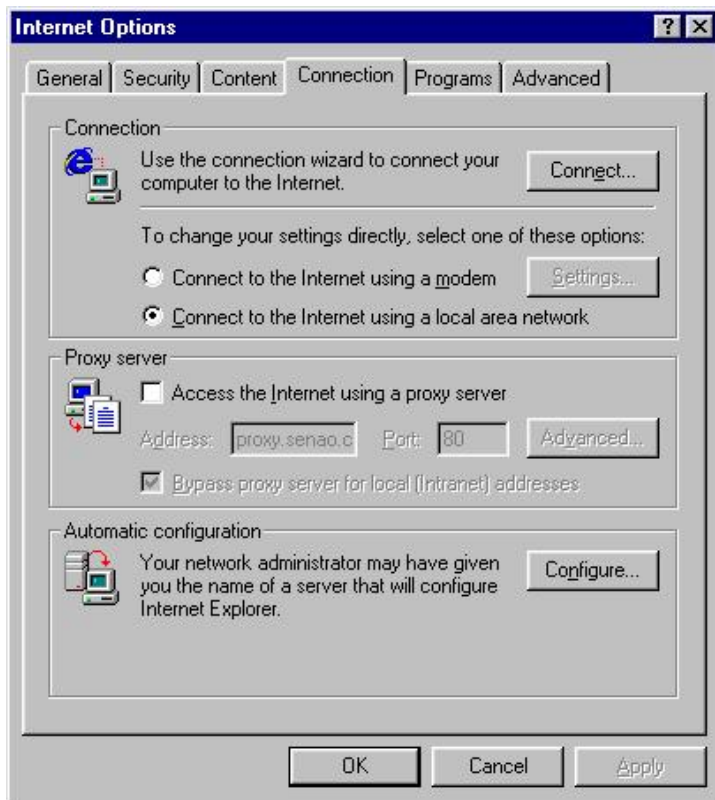


Figure 3-2

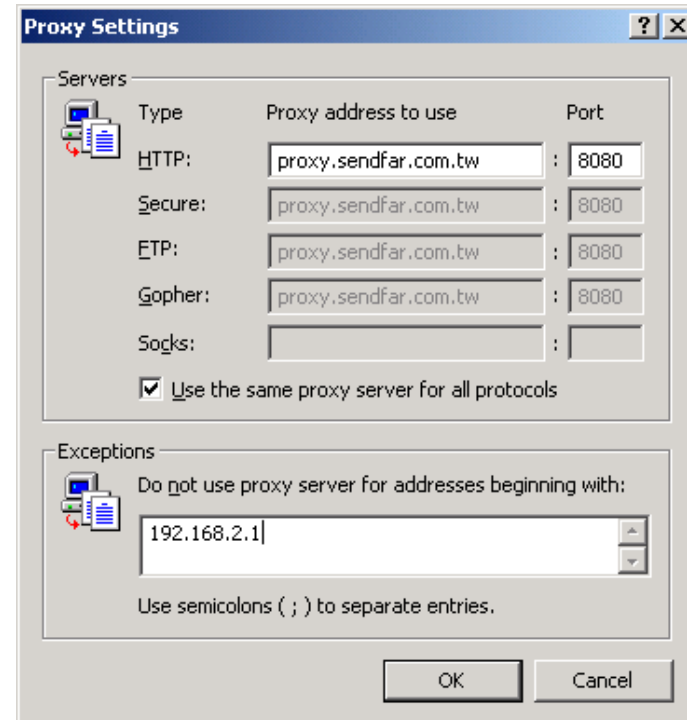


Figure 3-3

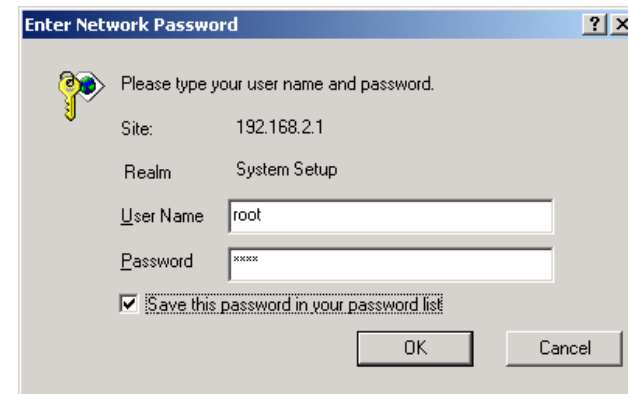


Figure 3-4

3-2 Configure the RB

The web user interface can be grouped into **Quick setup, Basic Configuration, Advanced Configuration** and **Utility** as shown in **Figure 3-5**.

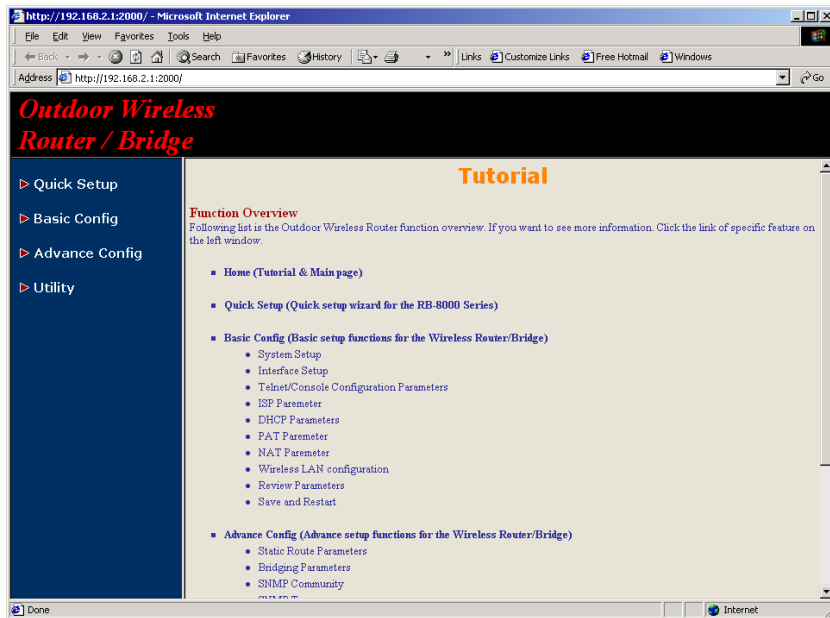


Figure 3-5

The left frame contains, in a tree structure, the contents of the RB web configuration interface. Move through the tree by clicking on an icon to expand or collapse the tree. The nodes on the tree represent web pages that allow you to view and modify the parameters of the RB.

If users want to connect multiple wireless computers to a broadband (ADSL or Cable) modem or an Ethernet switch to surf the Internet, you need to configure the RB as a broadband wireless router to share a single IP address with the multiple wireless computers as described as follows.

3-2-1 Configure the RB as bridge mode Root AP

3-2-1-1 Configure TCP/IP parameters

1. Click **Advanced Config**, select **Bridging**, and then click **Enable** for **Bridge Function** as shown in **Figure 3-6**. In the **Bridging Parameter** window, enter the **IP Address** (default is **192.168.2.1**) and **Subnet Mask** (default is **255.255.255.0**) that are suitable for your network domain. After that, click **FINISH** at the bottom of this page to complete the modification of this page.

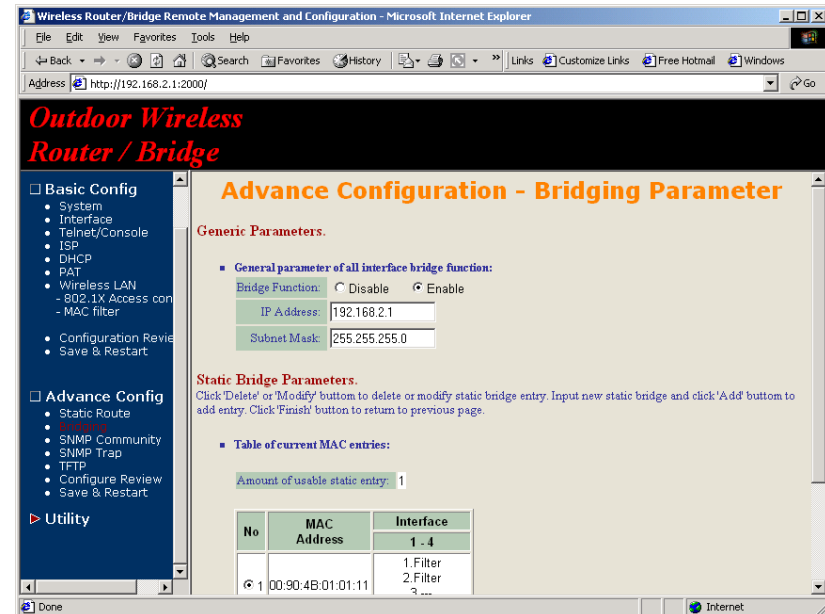


Figure 3-6

3-2-2 Configure the RB as Root AP with PPPoE Ethernet connection

3-2-2-1 Configure TCP/IP parameters

1. Click **Advanced Config**, select **Bridging**, and then click **Disable** for **Bridge Function** as shown in **Figure 3-6**. After that, click **FINISH** at the bottom of this page to complete the modification of this page.
2. if you are an ADSL subscriber, you need specify that your personal ISP PPPoE username and password to enable ADSL broadband access, in here, click **Basic Config**, select **ISP** (as shown in **Figure 3-7**). In this page, enter **MODIFY** button to setup the correct ISP parameters: **ISP Name**, **ISP Phone**, **PPPoE Username** and **PPPoE Password** to (as shown in **Figure 3-8**).

Hint: Ask your ISP for the correct settings.

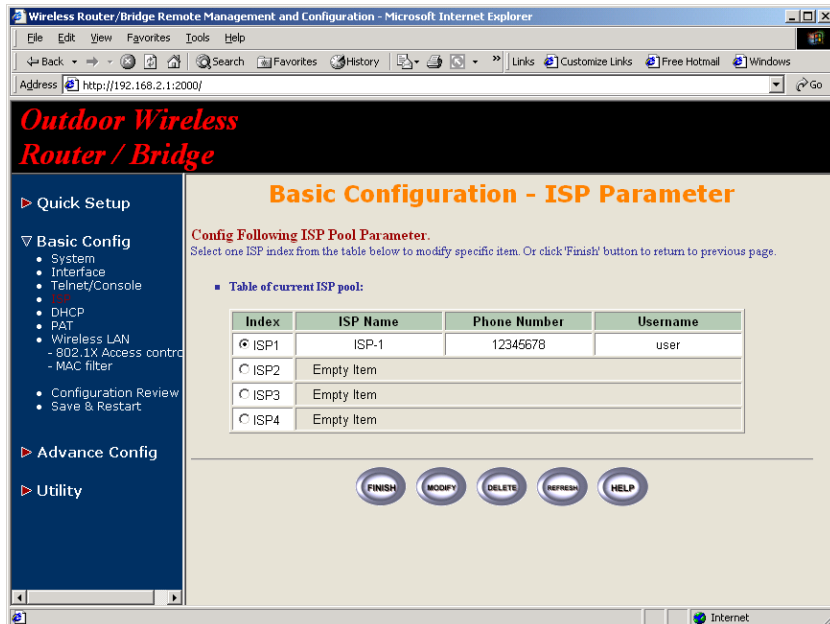


Figure 3-7

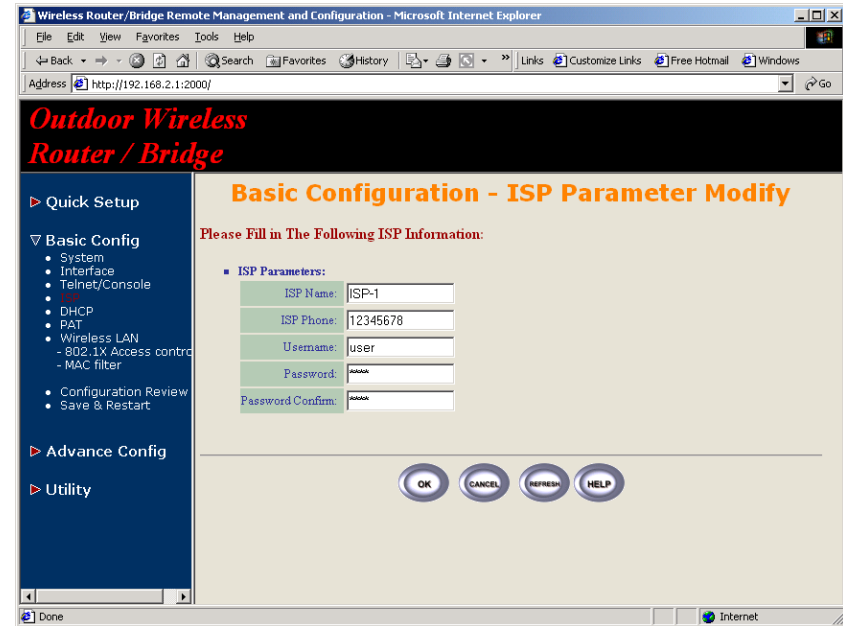


Figure 3-8

3. Click **Basic Config**, select **Interface** (as shown in **Figure 3-9**). In this page, you can click radio button and enter **MODIFY** to choice which one that you want to change it (as shown in **Figure 3-10**).

In interface 1, Make sure this wireless interface status is **Active**, enter the **Wireless interface IP** (default is **192.168.1.1**) and **Wireless interface Net Mask** (default is **255.255.255.0**) that are suitable for your wireless network.

In interface 2, Make sure this Ethernet interface status is **Active**, and specify the **Ethernet IP address** (default is **192.168.2.1**) and **Ethernet Net Mask** (default is **255.255.255.0**) of the Ethernet interface.

In interface 3, Make sure this PPPoE interface status is **Active**, and specify the **Ethernet IP address** (default is **192.168.2.1**) and **Ethernet Net Mask** (default is **255.255.255.0**), choice the **ISP index** that your are configured in step 1. After that, follow the default setting and Click the **OK** button to return to the **Interface Parameter** window. Finally, you need to click **FINISH** at the bottom of this page to complete the modification of this page.

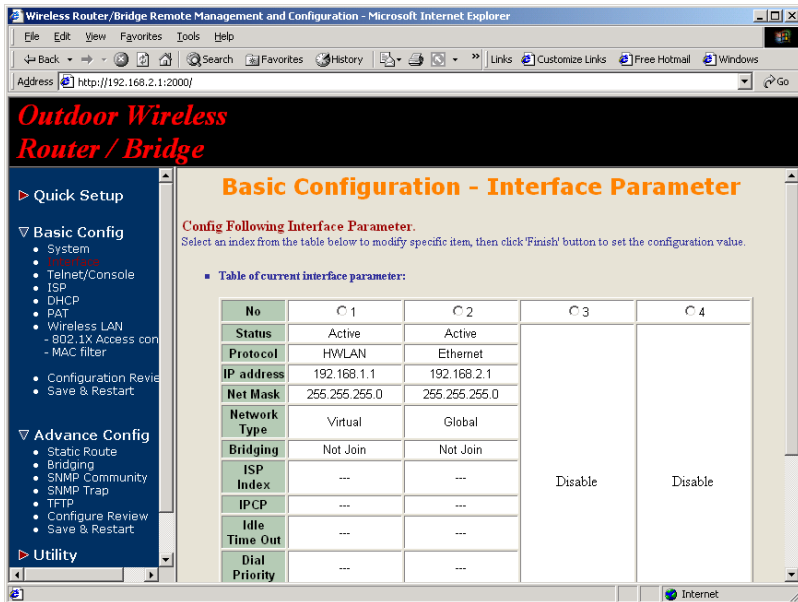


Figure 3-9

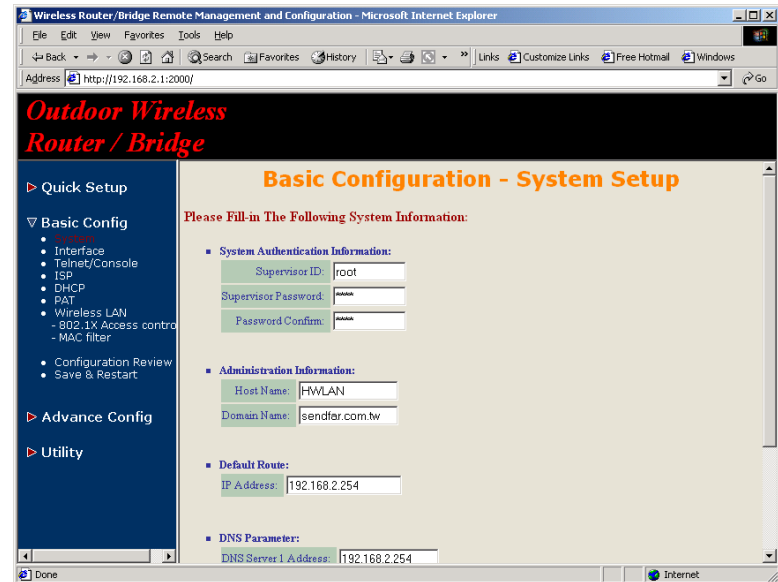


Figure 3-11

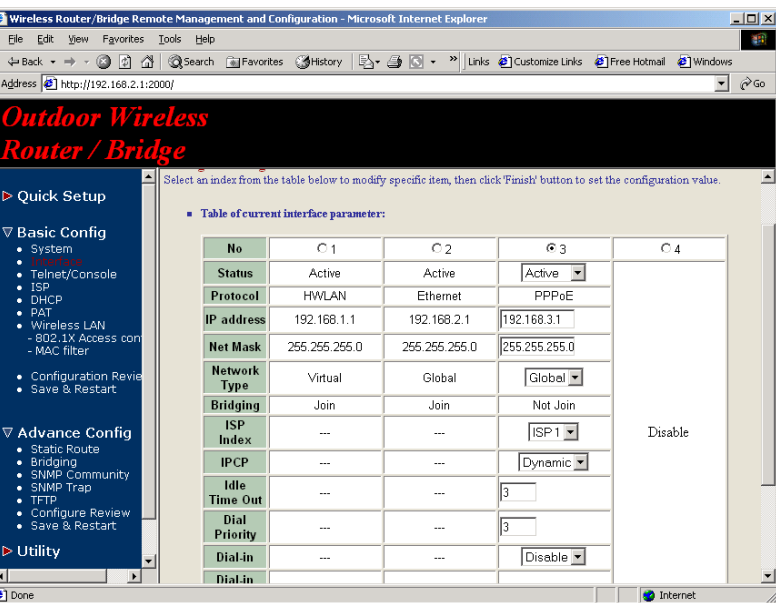


Figure 3-10

Hint: Make sure interface 4 within status **Disable**.

Hint: Choose the **Network Type** in every interfaces to enable NAT service. For example, make sure PPPoE interface within **Network Type Global** and others are **Virtual**, it means that every communications through the PPPoE interface needs NAT transfer.

- The RB supports PPPoE auto dial-up, please make sure your default route is zero. In here, click **Basic Config**, and then select **System** as shown in **Figure 3-11**. In the **System Setup** page, specify the **Default Route** (Default is **192.168.2.254**) is **0.0.0.0** and then click **FINISH** button at the bottom of this page to complete the modification of this page.

- Click **Basic Config**, select **DHCP** (as shown in **Figure 3-12**) and make sure the DHCP client service is **Disable**. After that, click **FINISH** at the bottom of this page to complete the modification of this page.

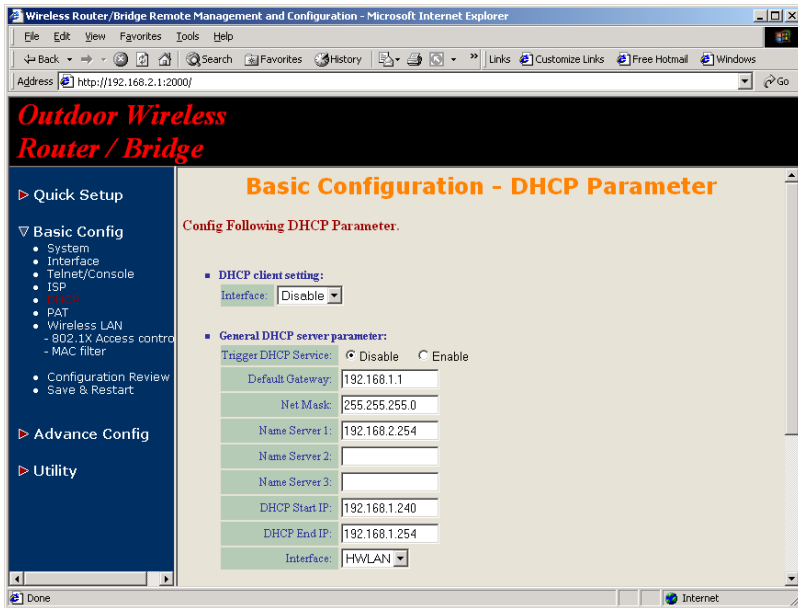


Figure 3-12

3-2-3 Configure the RB as Root AP with dynamic IP address Ethernet

3-2-3-1 Configure TCP/IP parameters

- Click **Advanced Config**, select **Bridging**, and then click **Disable** for **Bridge Function** as shown in **Figure 3-6**. After that, click **FINISH** at the bottom of this page to complete the modification of this page.
- Click **Basic Config**, select **Interface** (as shown in **Figure 3-9**). In this page, you can click radio button and enter **MODIFY** to choice which interface that you want to change it (as shown in **Figure 3-10**).

In interface 1, Make sure this wireless interface status is **Active**, enter the **Wireless interface IP** (default is **192.168.1.1**) and **Wireless interface Net Mask** (default is **255.255.255.0**) that are suitable for your wireless network.

In interface 2, Make sure this Ethernet interface status is **Active**, and other parameters will obtain automatically by DHCP from your network environment.

Click the **OK** button to return to the **Interface Parameter** window. Finally, you need to click **FINISH** at the bottom of this page to complete the modification of this page.

Hint: Make sure interface 3 and 4 within status **Disable**.

Hint: In order to enable NAT service, choice the **Network Type** in the interface Wireless and Ethernet. For example, make sure Ethernet interface within **Network Type Global** and Wireless interface is **Virtual**, it means that every communication through the Ethernet interface needs to do NAT transfer.

- Click **Basic Config**, select **DHCP** (as shown in **Figure 3-12**) and apply the DHCP client service running on interface 2 (Ethernet interface). After that, click **FINISH** at the bottom of this page to complete the modification of this page.

3-2-4 Configure the RB as Root AP with static IP address Ethernet

3-2-4-1 Configure TCP/IP parameters

1. Click **Advanced Config**, select **Bridging**, and then click **Disable** for **Bridge Function** as shown in **Figure 3-6**. After that, click **FINISH** at the bottom of this page to complete the modification of this page.
2. Click **Basic Config**, select **DHCP** (as shown in **Figure 3-12**) and make sure the DHCP client service is **Disable**. After that, click **FINISH** at the bottom of this page to complete the modification of this page.
3. Click **Basic Config**, select **Interface** (as shown in **Figure 3-9**). In this page, you can click radio button and enter **MODIFY** to choice which interface that you want to change it(as shown in **Figure 3-10**).

In interface 1, Make sure this wireless interface status is **Active**, enter the **Wireless interface IP** (default is **192.168.1.1**) and **Wireless interface Net Mask** (default is **255.255.255.0**) that are suitable for your wireless network.

In interface 2, Make sure this Ethernet interface status is **Active**, and specify the **Ethernet IP address** (default is **192.168.2.1**) and **Ethernet Net Mask** (default is **255.255.255.0**) of the Ethernet interface.

Click the **OK** button to return to the **Interface Parameter** window.

Finally, you need to click **FINISH** at the bottom of this page to complete the modification of this page.

Hint: Make sure interface 3 and 4 within status **Disable**.

Hint: In order to enable NAT service, choice the **Network Type** in the interface Wireless and Ethernet. For example, make sure Ethernet interface within **Network Type Global** and Wireless interface is **Virtual**, it means that every communication through the Ethernet interface needs to do NAT transfer.

4. Click **Basic Config**, and then select **System** as shown in **Figure 3-11**. In the **System Setup** page, specify the **Default Route** (Default is **192.168.2.254**) as the IP Address of the ADSL/Cable modem connected to the AP or the IP Address of the Gateway in your LAN environment, and Specify at least one IP address of the **DNS parameter** (Default DNS server 1 is **192.168.2.254**) provided by your ISP in the DNS server parameter and then click **FINISH** button at the bottom of this page to complete the modification of this page.

3-2-4 Configure Wireless related parameters

Configure IEEE 802.11b WLAN parameters (as shown in **Figure 3-13**) Click **Basic Config**, select **Wireless LAN** page. In here, enter the **Channel** (default is **1**), **rts Threshold** (default is **250**), **frag Threshold** (default is **1600**), **SSID** (default is **rb8100**) and **Station Name** (default is **ap**) that are suitable for your radio network and then you can click radio button to disable WEP or enable 64/128 bit **WEP services** (default is **disable**), if WEP is enabled, you must input corresponded **Default Key** index and **WEP Key**. After that, click **FINISH** at the bottom of this page to complete the modification of this page.

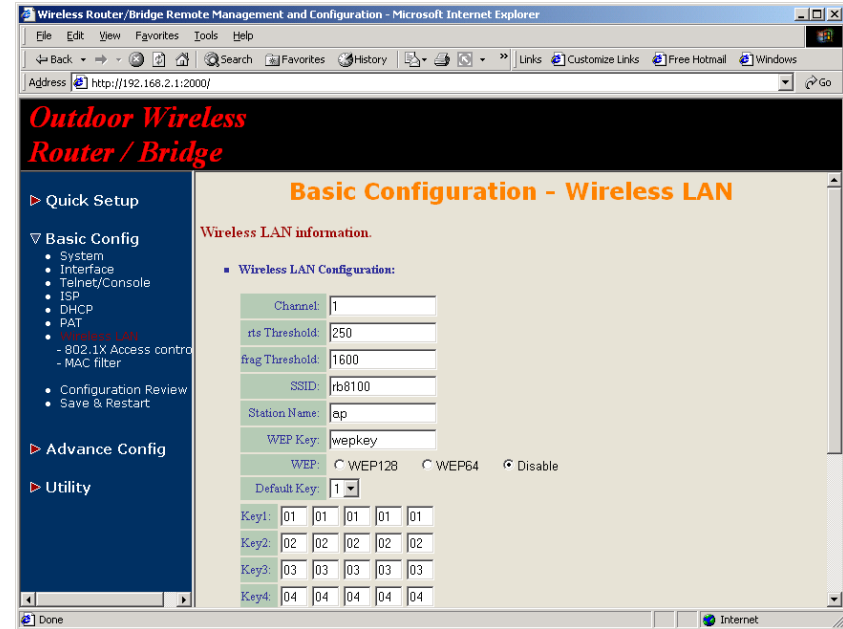


Figure 3-13

3-2-5 Configure the RB as Remote Extension Bridge

The RB series can easy build out Point-to-Point, Point-to-Multipoint wireless backbone infrastructure, you can configure your RB as the Remote Extension Bridge that connect to the Root RB.

1. Configure the operation role of this RB (as shown in **Figure 3-14**)

Click **Quick Config**, select **Remote Extension Bridge** to setup this RB that play the Remote Bridge role and then click **NEXT** at the bottom of this page to complete the modification of this page.

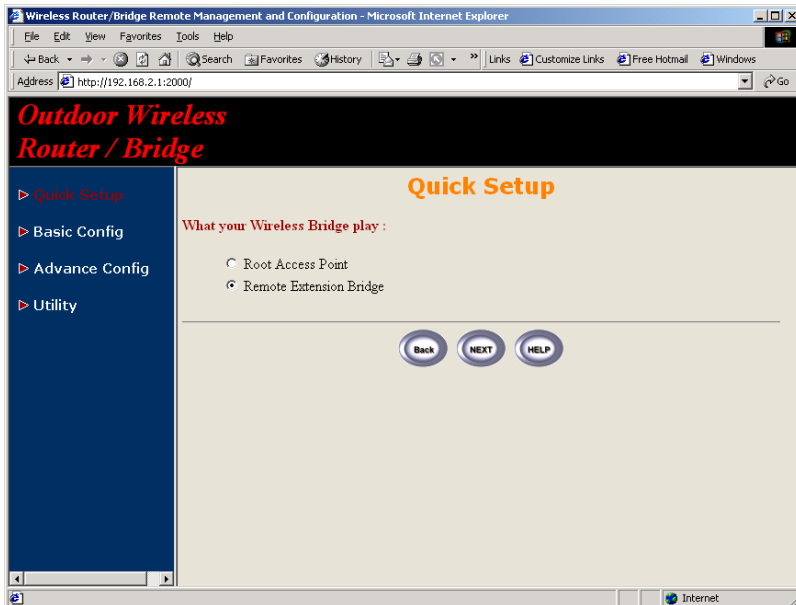


Figure 3-14

2. Configure TCP/IP parameters on Wireless (as shown in **Figure 3-15**)

In this page, enter the **Wireless interface IP** (default is **192.168.1.1**) and **Wireless interface Net Mask** (default is **255.255.255.0**) that are suitable for your wireless network, and specify the **Default Gateway** (Default is **192.168.2.254**) as the Wireless IP Address of the Root RB. After that, specify the IP address of the DNS servers provided by your ISP in the **DNS server** (Default is **192.168.2.254**) parameter.

Hint: Designed your network infrastructure and assigned the correct IP address for the Root RB and the Extension RB.

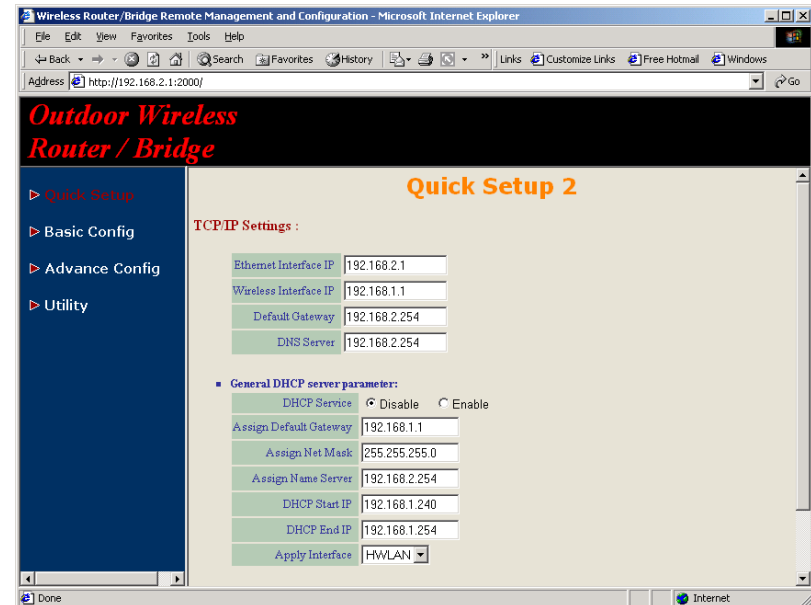


Figure 3-15

3. Configure TCP/IP parameters on Ethernet
Specify the **Ethernet IP address** (default is **192.168.2.1**) and **Ethernet Net Mask** (default is **255.255.255.0**) of the Ethernet interface that are suitable for your Ethernet network. At finally, click **NEXT** at the bottom of this page to complete the modification of this page.
4. Configure Wireless parameters (as shown in **Figure 3-16**)

Hint: Make sure the **SSID** parameter is same with the configuration of the Root RB.

In this page, enter the **Channel** (default is **1**), **rts Threshold** (default is **250**), **frag Threshold** (default is **1600**), **SSID** (default is **rb8100**) and **Station Name** (default is **ap**) that are suitable for your radio network and then you can click radio button to **disable** WEP or **enable** 64/128 bit **WEP services** (default is **disable**), if WEP is enabled, you must input corresponded **Default Key** index and **WEP Key**. After that, click **NEXT** at the bottom of this page to complete the modification of this page.

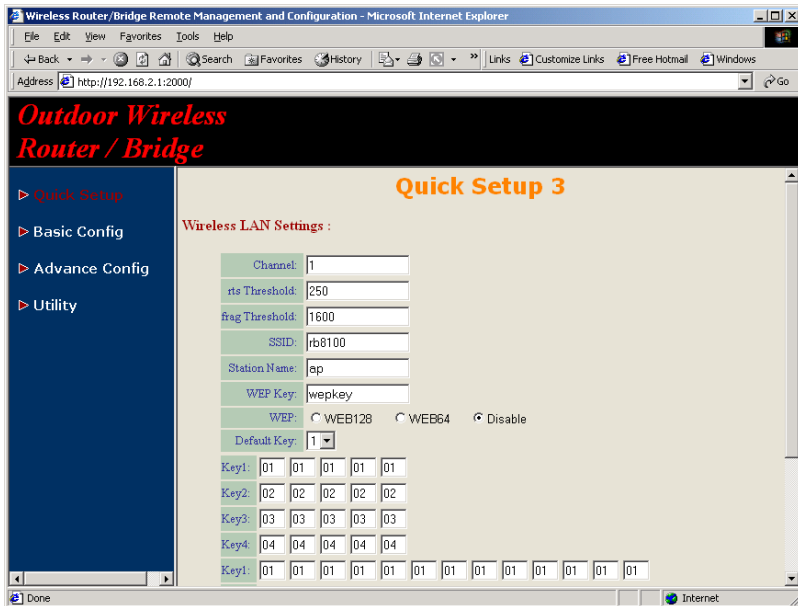


Figure 3-16

5. Preview the configured setting of this RB (as shown in **Figure 3-17**)

This page will present the current settings of the RB to system administrator, the operator can easy to view all running configuration in here. After that, click **Save** button to store the changes to the RB.

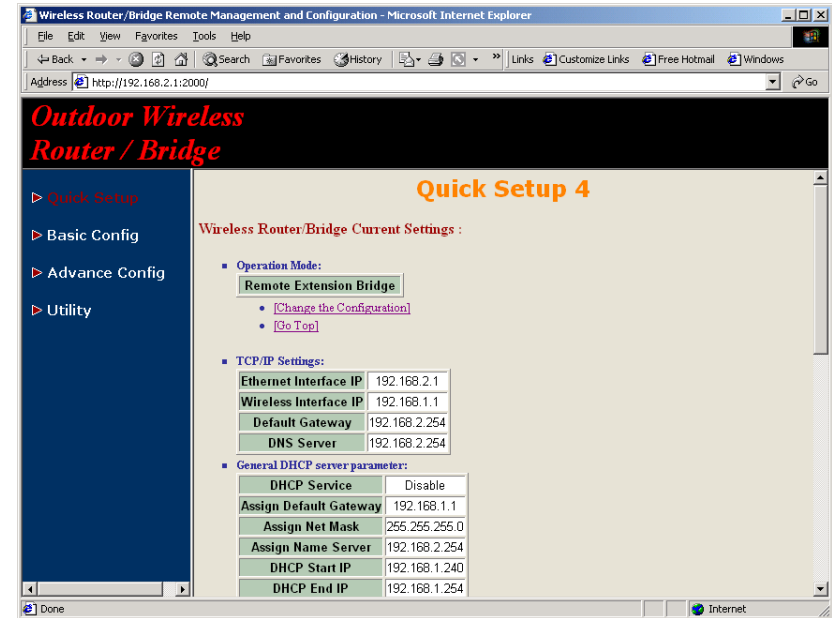


Figure 3-17

6. Enable DHCP client on this Extension RB

Sometimes, the operator may use DHCP to manage the network. In here, you can enable DHCP client services on wireless interface. You can click **Basic Config**, select **DHCP** (as shown in **Figure 3-12**) and apply the DHCP client service running on interface 1 (Wireless interface), After that, click **FINISH** at the bottom of this page to complete the modification of this page.

7. Enable NAT

Sometimes, the operator may implement NAT on the network. In here, you can click **Basic Config**, select **Interface** (as shown in **Figure 3-9**), in this page, you can click radio button and enter **MODIFY** to choice

which interface that you want to change it (as shown in **Figure 3-10**).

In order to enable NAT service, choose the **Network Type** in the interface Wireless and Ethernet. For example, make sure Ethernet interface within **Network Type Virtual** and Wireless interface is **Global**, it means that every communication through the Wireless interface needs to do NAT transfer.

3-3 Security

3-3-1 WEP encryption

1. Click **Basic Config**, select **Wireless LAN** page, and configure it to **disable** or enable **64/128 bit WEP services** (default is **disable**) as shown in **Figure 3-13**.
2. Key in the **WEP Key** and specify which WEP Key id you want to use it. After that, click **FINISH** at the bottom of this page to generate the real WEP key complete the modification of this page.

Hint: If you enable WEP services on RB, all of the communication between stations to RB will be encrypted. You must make sure all wireless client and RB with the same WEP key.

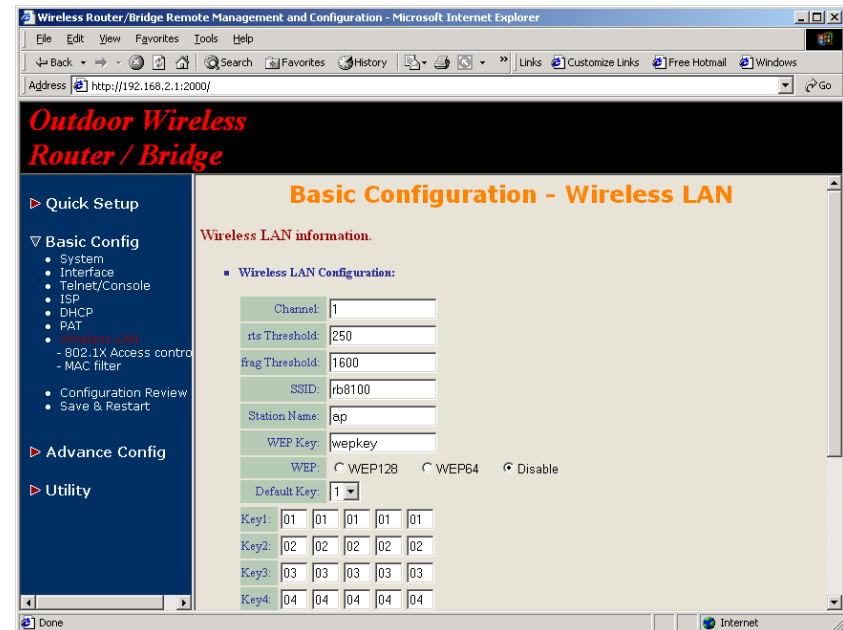


Figure 3-18

3-3-2 IEEE 802.1x Access Control

You can configure Authenticator on RB:

1. Click **Basic Config**, select **802.1X Access Control** page, and choice the IEEE 802.1x services is **Enable** or **Disable**. (as shown in **Figure 3-19**).

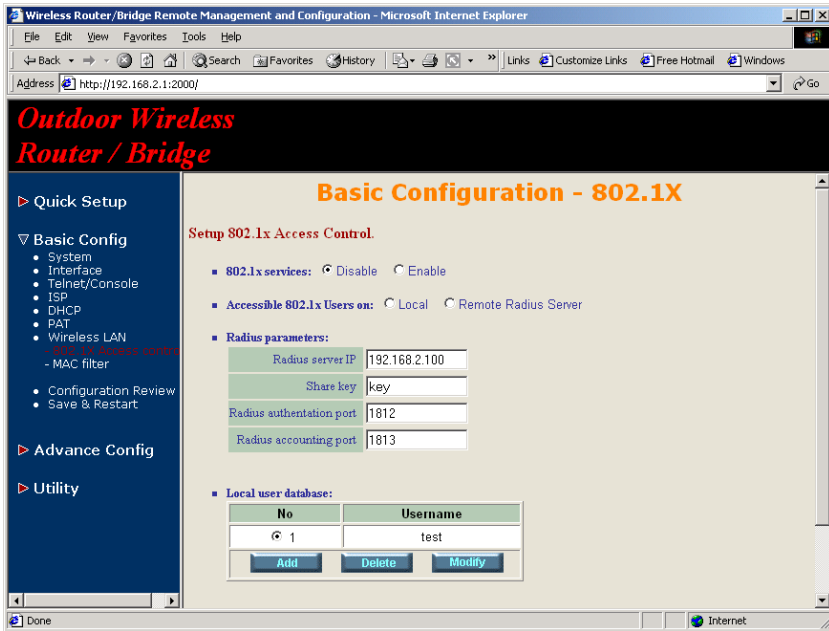


Figure 3-19

2. The RB supporting authentication which based on two kinds of user information base, **Local User Database** or **Remote Radius Servers**. You can specify which user database you want to use.
3. You can specify the username/password of a accessible 802.1x user. All user information entries in the Local User Database are permitted to connect to the RB. You can also click **ADD, DELETE, MODIFY** button to maintain this User Information table.
4. Some Radius server implements EAP authentication, like Microsoft

Windows 2000 server. To set up the Radius server and RB for authentication, you must specify the **Radius server IP address**, **Share key** between RB and Radius server, **authentication port** and **accounting port** on this Radius server.

5. Click **FINISH** at the bottom of this page to complete the modification of this page.

3-3-3 MAC based Access Control

1. Click **Basic Config**, select **MAC Filter** page, and choice the MAC Filter services is **Enable** or **Disable**. (as shown in **Figure 3-20**)
2. You can specify the MAC address of a wireless client station. All MAC entries in the MAC address table are permitted to connect to the RB. You can also click **ADD, DELETE, MODIFY** button to maintain this MAC address table. After that, click **FINISH** at the bottom of this page to complete the modification of this page.

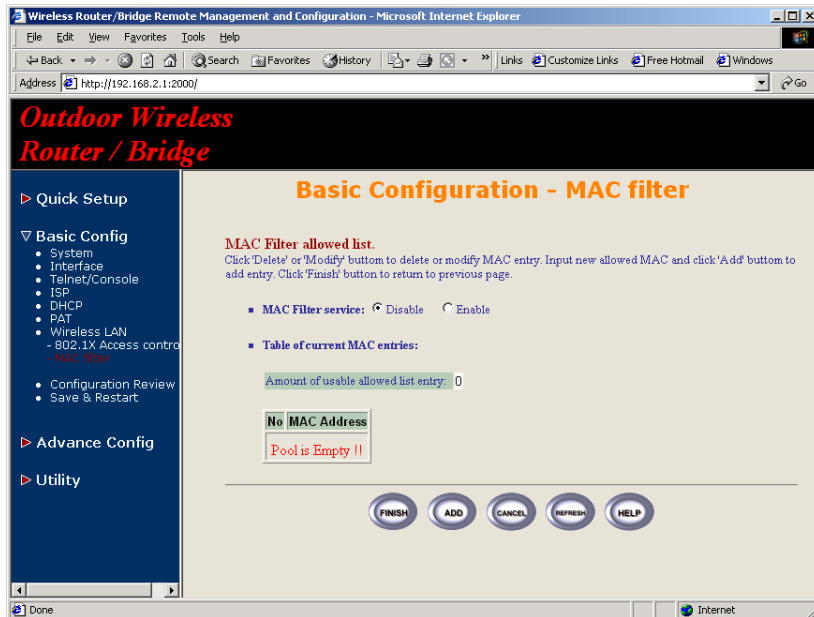


Figure 3-20

3-4 Configure DHCP server

Sometimes, the operator want to managing a large TCP/IP network requires maintaining accurate and up-to-date IP address and domain name information. In this situation, it needs manually configure and enable the DHCP server service

1. Click **Basic Config**, select **DHCP** (as shown in **Figure 3-12**) and **Enable** the DHCP server service (Default is **Disable**).
2. Specify the DHCP server parameters (**Assign Gateway, Assign Subnet Mask, Assign DNS server, DHCP Start IP address, DHCP End IP address** and **Apply Interface**) to allow any DHCP client to acquire the IP information.

Assign Gateway: Configure the default router for the client.

Assign Subnet Mask: Configure the subnet for the client.

Assign DNS Server: Configure the DNS servers IP for the client.

DHCP Start IP address, DHCP End IP address: Configure the DHCP IP address pool for the client.

Apply Interface: Enable DHCP server service on Wireless or Ethernet interface.

3. After that, click **FINISH** at the bottom of this page to complete the modification of this page.

Hint: The operator must to configure correct network settings in Gateway and DNS server of your wireless stations/Extension RBs/Ethernet clients to surf the Internet.

3-5 Configure Virtual Server

Sometimes, the operator can expose the internal servers on the local intranet to the public Internet. For this, you must create the Virtual Server Mapping for these invisible internal servers.

1. Click **Basic Config**, select **PAT** (as shown in **Figure 3-21**) and click **ADD**, **DELETE** or **MODIFY** button to change to configure Virtual Server Mapping page (as shown in **Figure 3-22**). In this page, you can maintain this **Virtual Server Mapping pool** (Default **Virtual Server Mapping pool** is empty) to enable the internal servers.

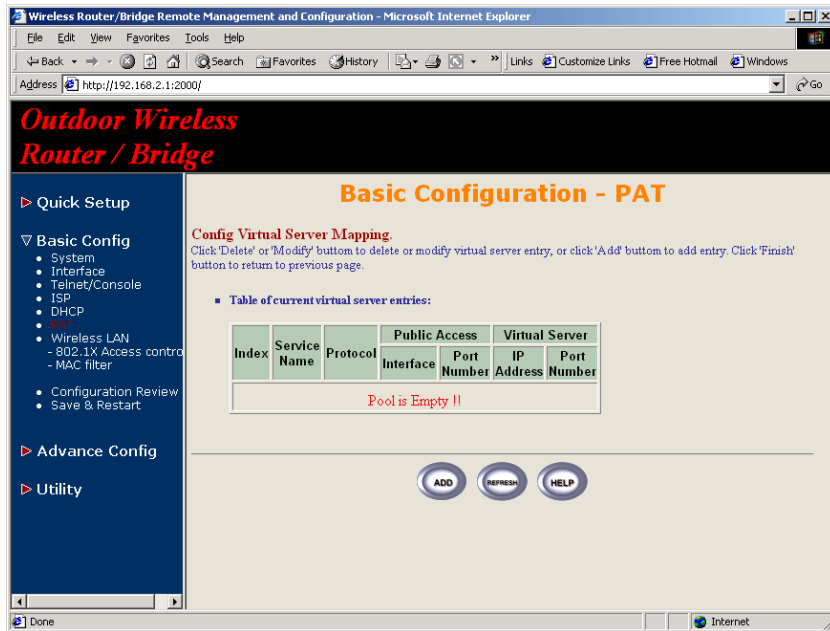


Figure 3-21

2. In configure Virtual Server Mapping page, you must specify some parameters (**Service Name**, **Protocol**, **Public Access Interface**, **Public Access Port number**, **Virtual Server IP address** and **Virtual Server Port Number**) to allow Internet user to access the Internal servers.

Service Name: Alias name of this internal server, such as **FTP**.

Access Interface: Indicate the translation occurs on which interface

(Wireless interface, NO. 1/Ethernet interface, NO. 2), such as **NO. 2**.

Protocol: Indicate which protocol (TCP/UDP) you want to translate from outside to internal server, such as **TCP**.

Public Access Port number: Indicate which socket port (1 ~ 65535) you want to translate from outside to internal server, such as **21**.

Virtual Server IP address: Specify the private IP address of the internal server, such as **192.168.1.100**.

Virtual Server Port number: Specify the socket port (1 ~ 65535) of the internal server, such as **21**.

3. After that, click **FINISH** at the bottom of **PAT** page to complete the modification for the Virtual Server Mapping.

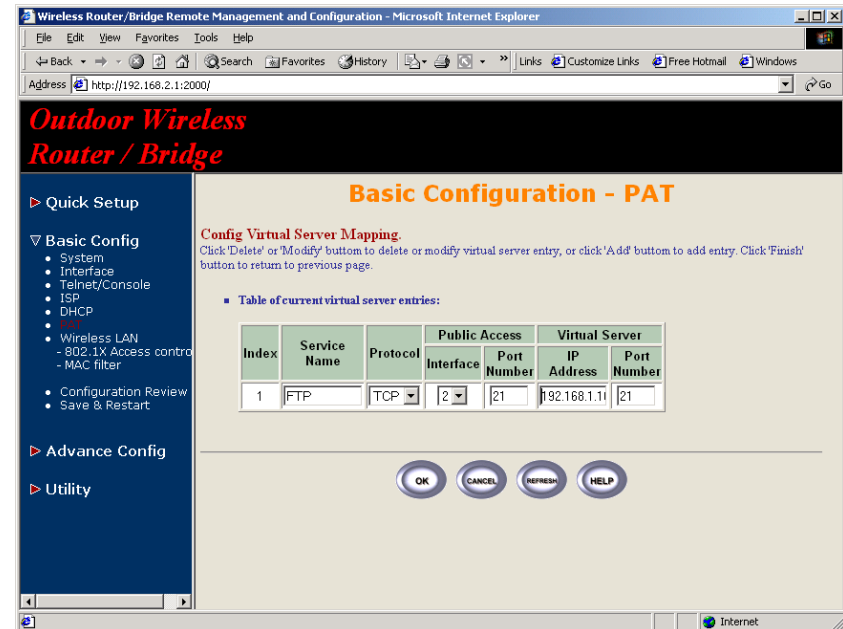


Figure 3-22

3-6 Configure Routing Table

1. Click **Advance Config** and select the **Static Route** page. This page (as shown in **Figure 3-23**) will present the current configuration for the routing table. You can also click **ADD**, **DELETE** or **MODIFY** button to maintain the **Static Routing table** (Default **Routing table** only contain single routing entry: **Default Route** entry).
2. Every **Route entry** contains three parameters: **Network Address**, **Subnet Mask** and **Gateway**.
Network Address and **Subnet Mask**: Specify the destination network.
Gateway: Indicate the forward gateway.
3. After that, click **FINISH** at the bottom of this page to complete the modification of this page.

Hint: The operator must to configure correct routing settings following the network infrastructure.

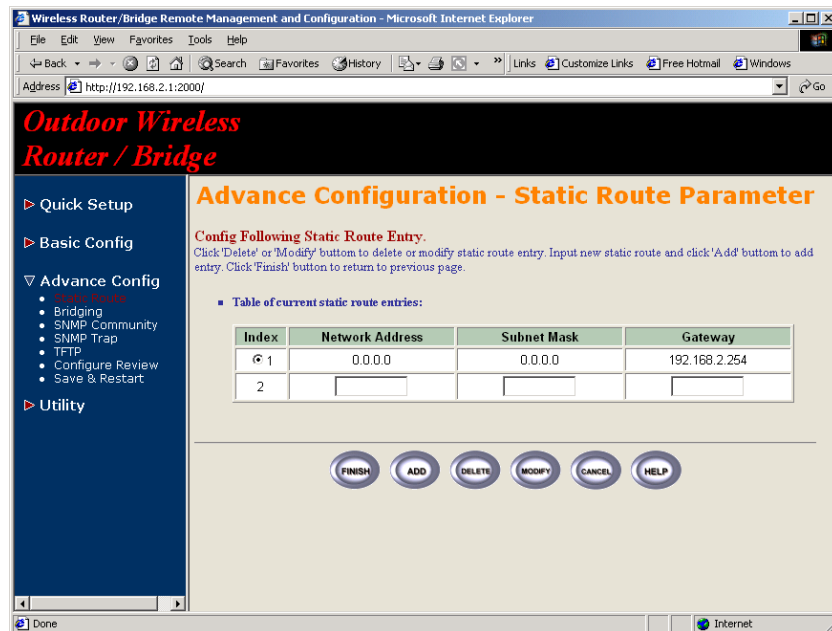


Figure 3-23

3-7 Configure Bridge

1. Click **Advance Config** and select the **Bridging**, and then click **Enable** for **Bridge Function** as shown in **Figure 3-6**. In the **Bridging Parameter** window, enter the **IP Address** (default is **192.168.2.1**) and **Subnet Mask** (default is **255.255.255.0**) that are suitable for your network domain.
2. You can specify the MAC address of a Wireless/Ethernet client. All MAC entries in the MAC address table are Permitted/Blocked/Learning to connect to the RB. In here, you can also click **ADD**, **DELETE**, **MODIFY** button to maintain this MAC address table.
3. After that, click **FINISH** at the bottom of this page to complete the modification of this page.

3-8 Configure SNMP

1. Click **Advance Config** and select the **SNMP Community** page. This page (as shown in **Figure 3-24**) will present the current accessible snmp communities and correspond Read/Write privilege. After that, click **FINISH** at the bottom of this page to complete the modification of this page.
2. Click **Advance Config** and select the **SNMP Trap** page. In this page, you can specify the **SNMP Trap host** and correspond **SNMP Trap Community** in this page. After that, click **FINISH** at the bottom of this page to complete the modification of this page.

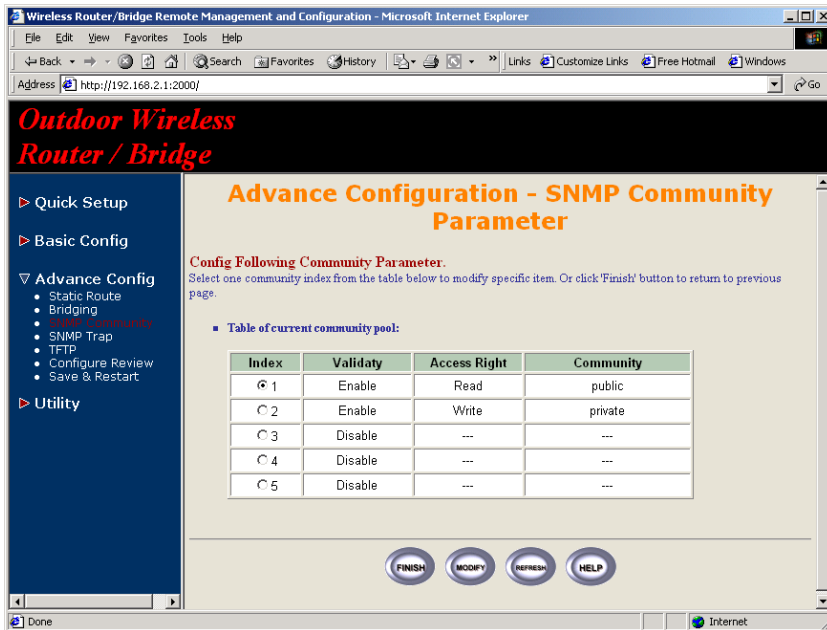


Figure 3-24

3-9 Configuration Review and Apply the New Settings

1. Click **Basic Config** or **Advance Config** and select the **Configuration Review** page. This page (as shown in **Figure 3-25**) will present the current configuration settings the operator has made.
2. Click **Basic Config** or **Advance Config** and select the **Save & Restart** page. In this page, you can click the **SAVE** button to apply the new configuration settings and click the **Restart** button to take effect the previous configuration changes.

Hint: It needs to take about 10 seconds for the RB to complete the restart process.

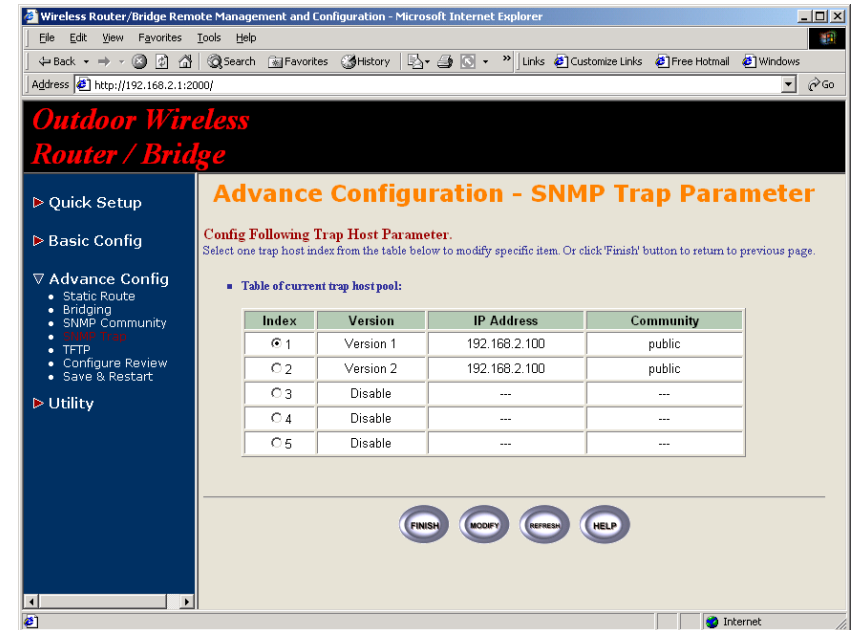


Figure 3-25

3-10 Utility

3-10-1 System Info

Click **Utility**, select **System Info** page (as shown in **Figure 3-26**), you can view some system information on this, such as **Model Name**, **Software Version**, **CPU** and **RAM**, ...etc.

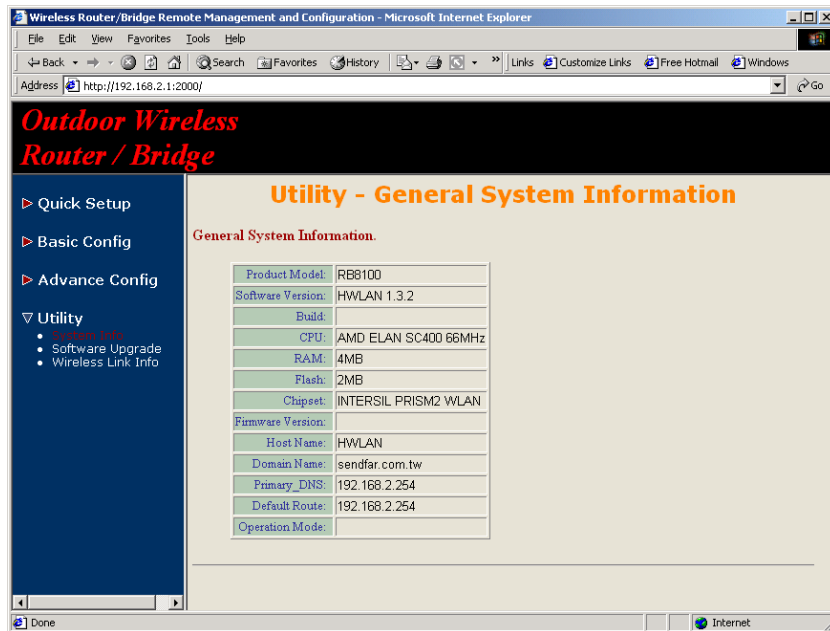


Figure 3-26

3-10-2 Software Upgrade

1. Click **Utility**, select **Software Upgrade** page (as shown in **Figure 3-27**), and then you can use TFTP to upgrade your RB. In here, you must specify the **TFTP server IP** and the **File Name** that you want to upgrade. After that, click **OK** button to start the TFTP upgrade process.
2. If the upgrade process is success, the RB will apply the new settings and start rebooting right away.

Hint: You must set up a TFTP server and this server must contain one newest image.

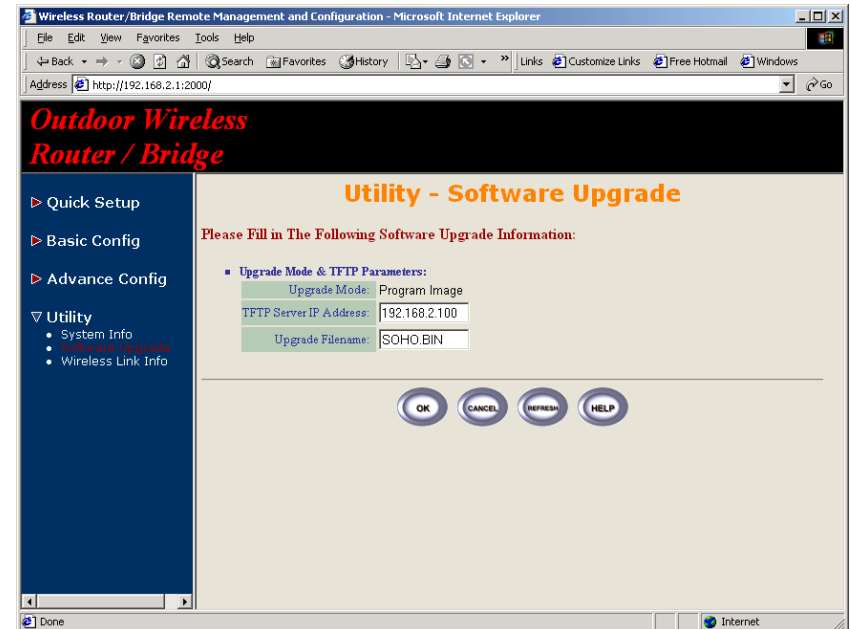


Figure 3-27

3-10-3 Wireless Link Info

1. Click **Utility**, select **Wireless Link Info** page (as shown in **Figure 3-28**), and then you can view the **Link Quality** and the **Signal Strength** of this wireless connection.
2. The **Link Quality** and the **Signal Strength** are valid only in the role of Extension RB. In here, you can also see the quality level for this wireless connection.

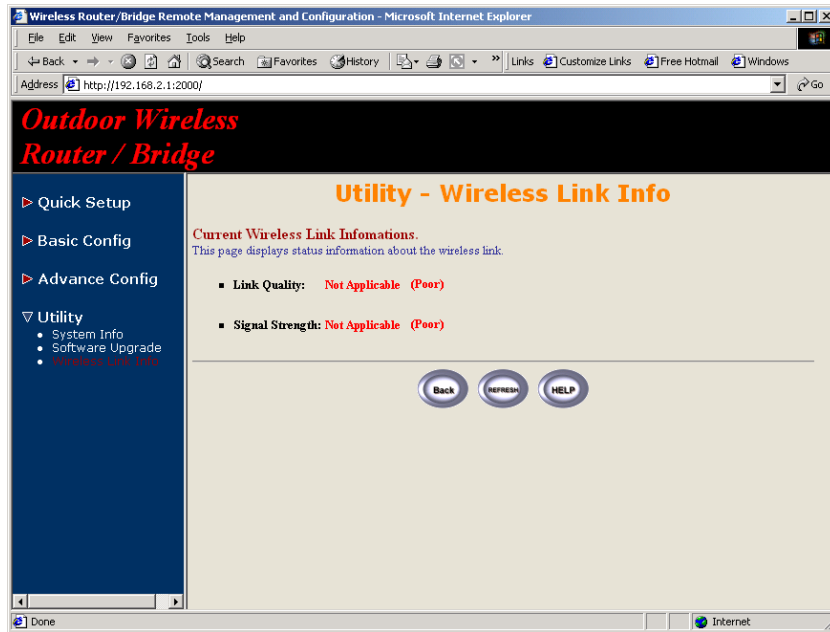


Figure 3-28

Chapter 4 Command Line Interface

The RB is designed to operate as shipped from the factory without any special set-up. However, it has many options and parameters that can be changed if users have special requirements. Most of the management functions can be accessed using TCP/IP protocol, it also configured by Telnet/Console.

4.1 Telnet configuration

The user can use a LAN attached (wired or wireless) computer to configure the RB through using a Telnet session on a LAN attached computer. To use the Telnet session simply open a Telnet window using the IP address which has been assigned to the RB.

1. Click **Start** button, select **Run** to open the **Run** dialog box. Enter **telnet 192.168.2.1**(default terminal type of Telnet is VT100, default IP address of the RB is **192.168.2.1**). Then click **OK** as shown in **Figure 4-1**.

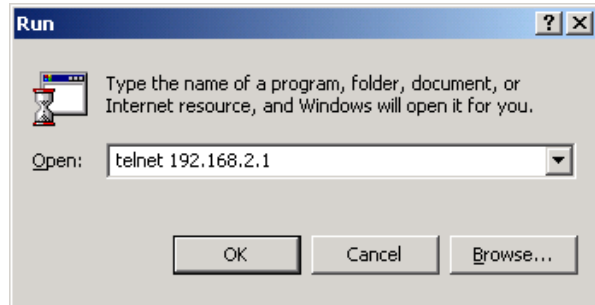


Figure 4-1

2. In the **Telnet** window, enter the **User Name** and **User Password** as shown in **Figure 4-2** (default User Name and User Password is **user1** and **test**) to see the main screen of Telnet user interface as shown in **Figure 4-3**.

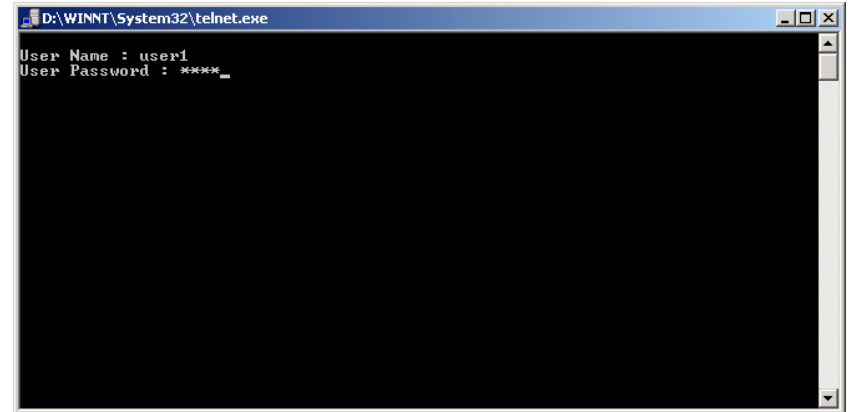


Figure 4-2

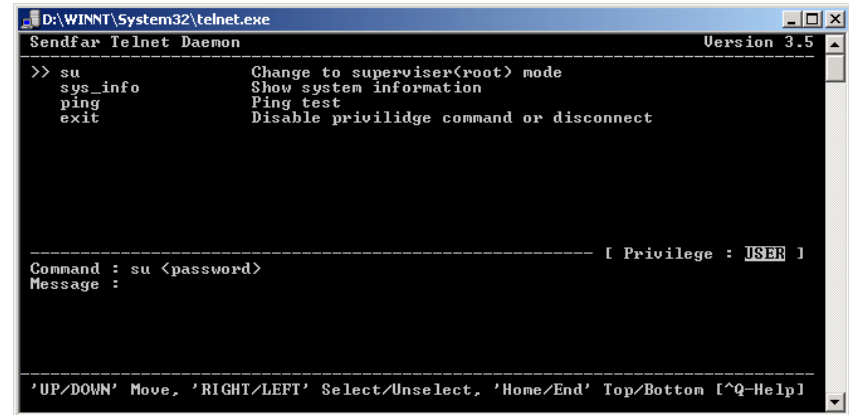


Figure 4-3

1. The structure of menu tree is shown in **Figure 4-4**. Users can use the following keys to select the parameter you want to change or add. The definition of the parameters is described in **Table 4-1 to Table 4-14**.
 - Up/Down or i/k key: move the cursor up/down to the specific item.
 - Right or l or Enter key: select the item or enter to sub-menu. Left or j key: return to previous menu page.
 - Home or Ctrl-A: move the cursor to the first item of the menu page.
 - End or Ctrl-E: move the cursor to the last item of the menu page.
 - Ctrl-Q or F1: Show the help page.

Note 1: * denote the function is displayed after *enable configuration mode* is enabled.

Note 2: In item **su**, type default password **root** to enter the supervisor configuration mode.

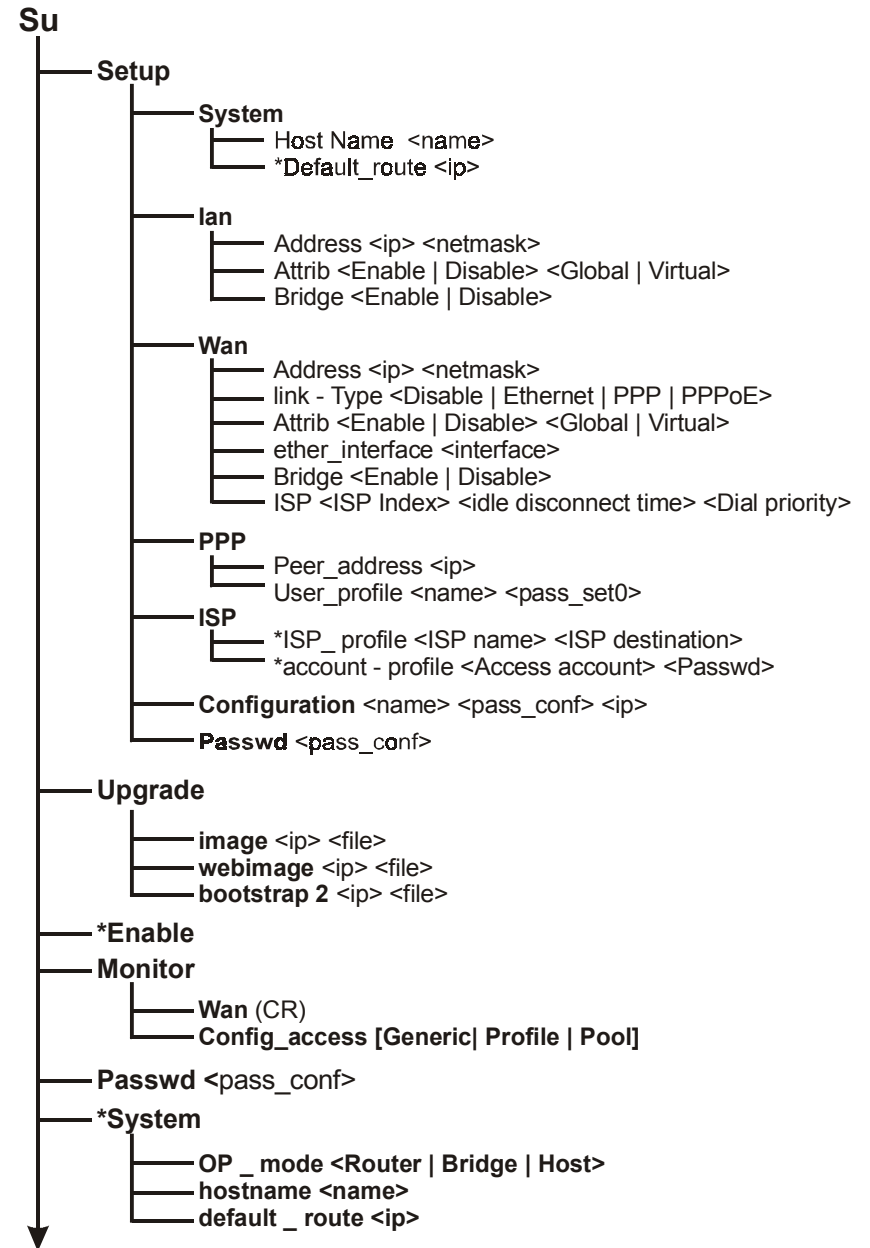


Figure 4-4

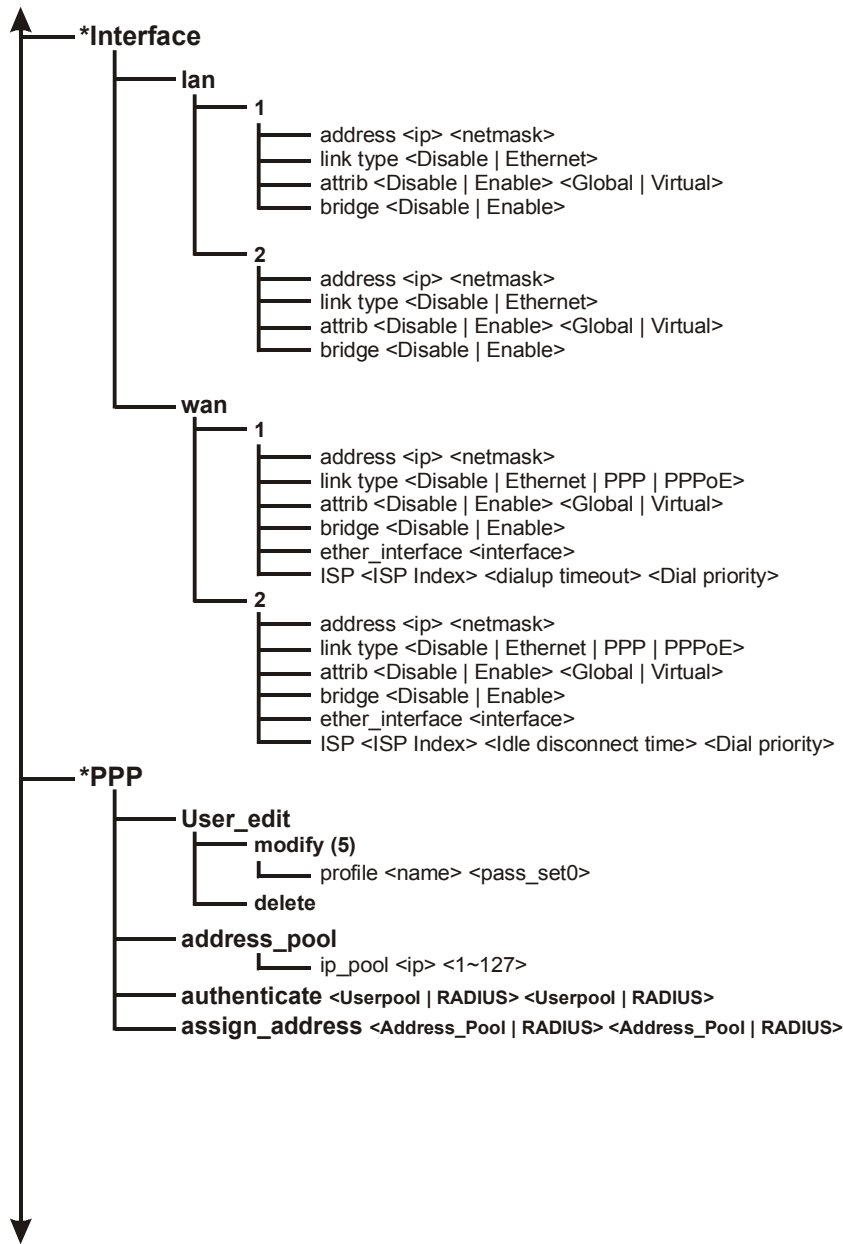


Figure 4-4

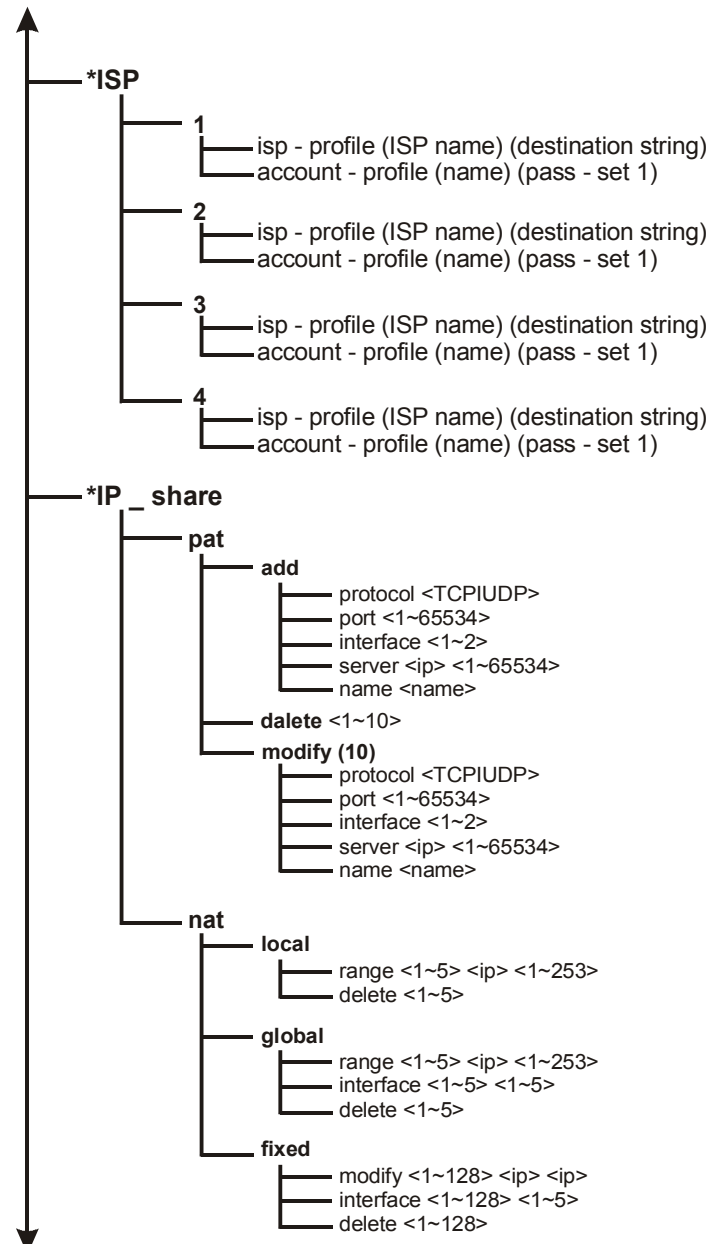


Figure 4-4

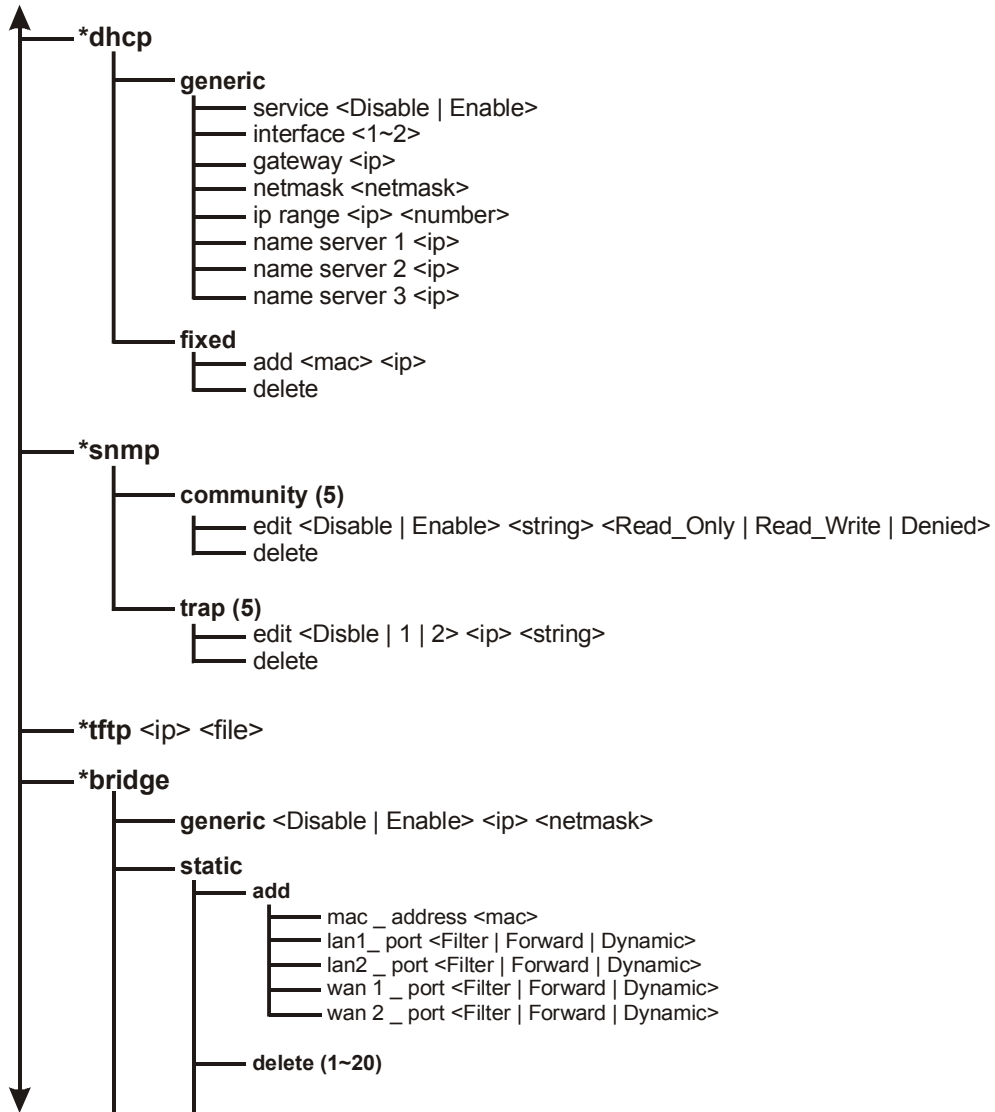


Figure 4-4

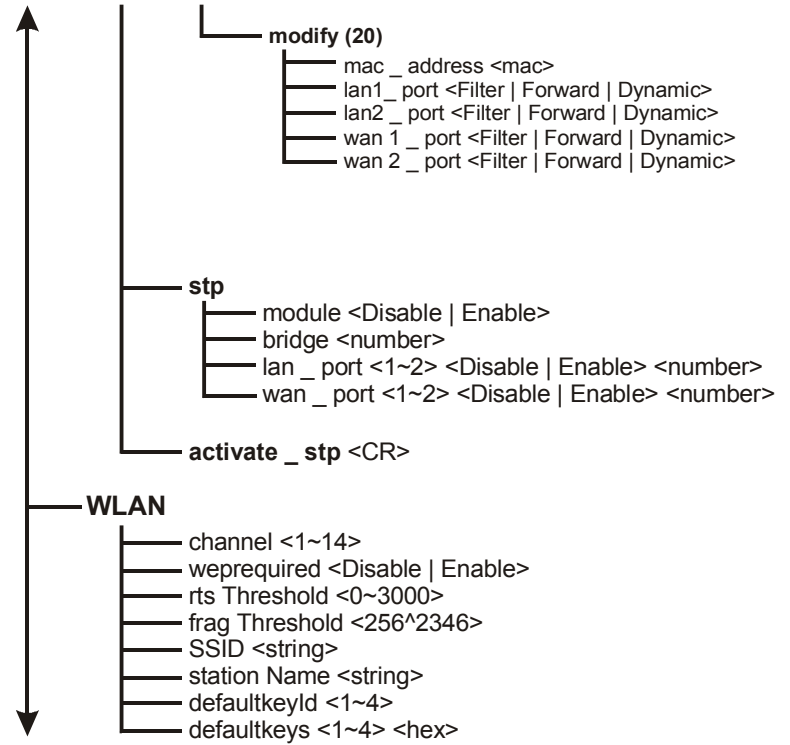


Figure 4-4

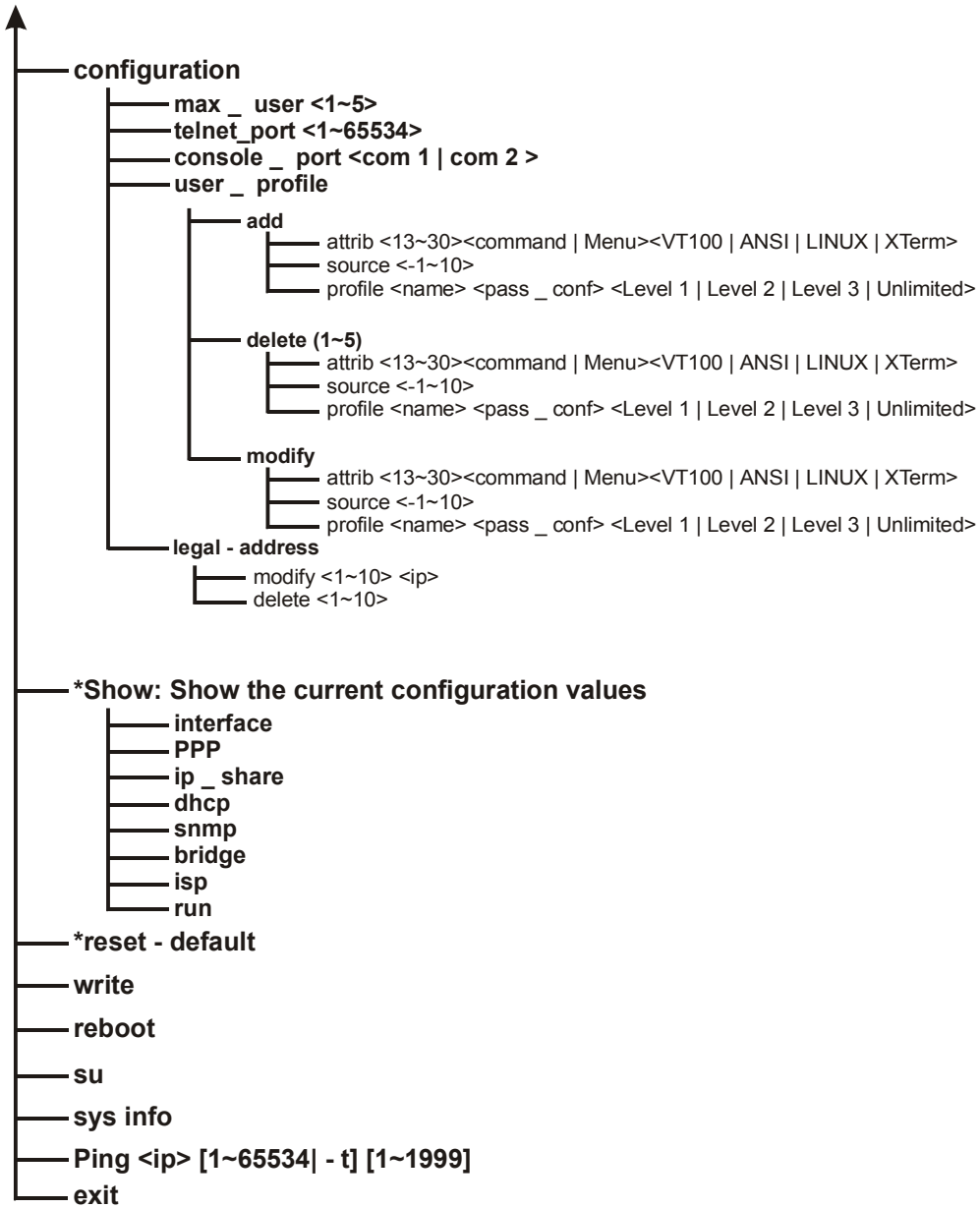


Figure 4-4

Appendix A Specifications

General

Compatibility	Fully interoperable with IEEE802.11b compliant products
Regulation Certifications	FCC Part 15, ETSI 300/328
Power Supply	Output: -48 VDC/0.7A (power over Ethernet) Input: 100/240 VAC; 50/60 Hz
Temperature Range	-20 to 70 °C (operating) -40 to 80 °C (storage)
Humidity (non-condensing)	5% to 95% typical
Surge Arrester	20KA Surge Current

Radio

Frequency Band	2.4 – 2.484 GHz
Radio Type	Direct Sequence Spread Spectrum (DSSS)
Modulation	CCK (11, 5.5Mbps) DQPSK (2Mbps) DBPSK (1Mbps)
Operation Channels	11 for North America, 14 for Japan, 13 for Europe, 2 for Spain, 4 for France
RF Output Power	13dBm(ETS,FR) [model: RB-8100E], 19dBm(FCC) [model: RB-8100]
RF Connector	Proprietary N-type (Reverse Polarity)

Network Information

Ethernet Interface	10-Base T (RJ45)
IP Sharing	Supports NAT
Roaming	Seamless roaming (IEEE802.11b compliant)
Security	64/128-bit WEP data encryption

Management

Local Configuration	RS-232 serial port
Remote Configuration	HTTP, Telnet, SNMP
Firmware Upgrade	Upgrade via Serial Interface or TFTP
IP Auto-configuration	Supports DHCP server

Physical Specifications

Dimensions	245(L) mm x 200(W) mm x 70(H) mm
Weight	2100 g

Appendix B Default Settings

B-1 Basic Configuration

B-1-1 System (as shown in Table B-1)

Parameter	Description	Default Value
Supervisor ID	Supervisor's identity code	root
Supervisor Password	Supervisor's password	root
Password Confirm	Confirm the password again	root
Host Name	Host name for the AP	HWLAN
Domain Name	Domain name for the AP	senfar.com.tw
Default Route IP Address	IP address of the gateway for default route when TCP/IP filtering	192.168.2.254
DNS Server Parameter DNS Server 1 Address DNS Server 2 Address DNS Server 3 Address	IP addresses of the DNS Servers of your Local ISP	192.168.2.254

Table B-1

B-1-2 Interface (as shown in Table B-2)

Parameter	Description	Default Value
Interface No.	No.1 Wireless Interface No.2 Ethernet Interface No.3 PPPoE Interface No.4 PPP Interface	Note: 1. No.3 is effective only when No.2 is Active. 2. Default No.3 & No. 4 is Disable
Status	Enable or disable the Corresponding interface	Active
IP address	IP address of the corresponding interface. The user can use a LAN attached (wired or wireless)	No.1: 192.168.1.1 No.2: 192.168.2.1 No.3: 192.168.3.1

	computer to configure the AP through using a web browser or telnet program on a LAN attached computer.	No.4: 192.168.4.1
Net Mask	Consists of four sets of digits that help divide a network into sub-networks and simplify routing and data transmission	No.1:255.255.255.0 No.2:255.255.255.0 No.3:255.255.255.0 No.4:255.255.255.0
Network Type	Select the network type for NAT function. Virtual <-> Global: NAT enable Global <-> Global: NAT disable Virtual <-> Virtual: NAT disable	No.1: Virtual No.2: Global No.3: Global No.4: Global
Bridging	Shows the corresponding interface that joins to form a bridge	No.1: Not Join No.2: Not Join No.3: Not Join No.4: Not Join
ISP Index	Select the ISP index given in the ISP pool	ISP1
IPCP	Select IP Control Protocol (Static or dynamic) for PPP/PPPoE interface	Dynamic
Idle Time Out (min)	Cancel the dial if not connected within this period	3min
Dial Priority	Set the dial-up priority of the corresponding interface	PPPoE: 3 PPP: 2
Dial-in	Enable or disable the dial-in function of the corresponding interface	Disable
Dial-in Authentication	Selects the authentication protocol for the corresponding dial-in interface	None

Table B-2

B-1-3 Telnet/Console (as shown in Table B-3)

Parameter	Description	Default Value
Maximum User	Set the maximum number of the users that can login the AP through Telnet session at the same time	2
Telnet Port	The port number for Telnet Program	23
Console Port	The communication port that is used to login the AP	COM1
ID Number	Index for Telnet users	1
User Name	User name for Telnet session	user1
Privilege	Select the user's privilege level for Telnet session	Unlimited
Max. Screen Line	Set the maximum number of lines displayed on the screen	24
Show Mode	Select the type of display for Telnet session (Command/Menu mode)	Menu
Keyboard Type	Select the type of the keyboard for Telnet session	VT100

Table B-3

B-1-4 Telnet/Console (as shown in Table B-4)

Parameter	Description	Default Value
ISP Name	Name of Internet Service Provider	ISP-1
Phone Number	The phone number that is used to dial up your ISP Note: The phone number must enter direct line phone number	12345678
Username	The user name used to login ISP	user
Password	The password used to login ISP	pass

Table B-4

B-1-5 DHCP (as shown in Table B-5)

Parameter	Description	Default Value
-----------	-------------	---------------

DHCP Client Setting	Enable or disable the specified interface to obtain an IP address automatically	Disable
Trigger DHCP Service	Enable or disable automatic IP address assignment to wireless stations	Disable
Default Gateway	IP address of the gateway for default route when TCP/IP filtering	192.168.1.1
Net Mask	Consists of four sets of digits that help divide a network into sub-networks and simplify routing and data transmission	255.255.255.0
Name Server	IP address of the DNS host	192.168.2.254
DHCP Start IP	IP starting address	192.168.1.240
DHCP End IP	IP ending address	192.168.1.254
Interface	Select the interface to provide DHCP service	HWLAN
Fixed Host Entry	Define a fixed Ethernet-to-IP address mapping to limit the client station with the Ethernet address to get the IP address	

Table B-5

B-1-6 Virtual Server Mapping (as shown in Table B-6)

Parameter	Description	Default Value
Service Name	Specify the service for public access	NULL
Protocol	Select a protocol for public access	NULL
Public Access – Interface	Select an interface for public access	NULL
Public Access – Port Number	Specify the port number of the interface for public access	NULL
Virtual Server – IP	Specify the IP address of the	NULL

Address	virtual server	
Virtual Server – Port Number	Specify the port number of internal virtual server	NULL

Table B-6

B-1-7 NAT (Network Address Translation) (as shown in Table B-7)

Parameter	Description	Default Value
Local IP Address Pool – Base IP Address	IP starting address of local IP address	NULL
Local IP Address Pool –Count	Number of local IP address	NULL
Global IP Address Pool – Base IP Address	IP starting address of global IP address	NULL
Global IP Address Pool – Count	Number of global IP address	NULL
Global IP Address Pool – Interface	Specify the interface as global IP address	NULL
Fixed IP Address Mapping – Local/Global IP Address	Define a local and global IP address pair for network address translation	NULL
Fixed IP Address Mapping – Interface	Specify the interface for network address translation	NULL

Table B-7

B-1-8 Wireless LAN (as shown in Table B-8)

Parameter	Description	Default Value
Regulatory Domain	Define the regulatory domain to Which this NIC may be deployed	1
Channel	The operating radio frequency channel for the AP	11
RTS Threshold	Set RTS (Request To Send) threshold value	250
Fragmentation Threshold	Set fragmentation threshold value	1600
SSID	Wireless LAN service area	rb8100

	identifier of the AP (case sensitive)	
Station Name	Shows the name of the AP	ap
WEP	Enable or disable 64-bit WEP (Wired Equivalent Privacy) key to encrypt data	Disable
Default Key	Select a WEP key to encrypt each frame transmitted from the radio using one the of the Keys from the Key Panel	1
Key Panel	When you use WEP to communicate with the other wireless clients, all the wireless devices in this network must have the same encryption key or pass phrase. Note: each key must consist of hex digits, it means that only digit 0 -9 and letters A-F are valid entries. If entered incorrectly, program will not write keys to a driver.	

Table B-8

B-1-9 Bridging (as shown in Table B-9)

Parameter	Description	Default Value
Bridging Function	Enable or disable bridging Function	Enable
IP Address	IP Address of the AP when in Bridging mode. The user can use a LAN attached (wired or wireless) computer to configure the AP through using a web browser or telnet program on a LAN attached computer.	192.168.2.1
Subnet Mask	Consists of four sets of digits	255.255.255.0

	that help divide a network into sub-networks and simplify routing and data transmission	
Operation mode	Enable or disable the operation mode	Enable Enable Disable Disable
MAC Address	MAC address to be considered in forward/filter policy	00-00-00-00-00-00
Interface	Select Filter(always block the frames), Forward(always forward the frames) or Dynamic(forward the frames if the MAC address exists) to the corresponding interface	1. Filter 2. Filter 3. --- 4. ---

Table B-9

B-1-10 SNMP Community (as shown in Table B-10)

Parameter	Description	Default Value
Validity	Enable or disable the function of the corresponding community index	Enable
Access Right	Select the access right (Deny/Read/Write/Create) for SNMP Manager	Read
Community	Specify the type of community (public or private) for SNMP Manager	Public

Table B-10

B-1-11 SNMP Trap (as shown in Table B-11)

Parameter	Description	Default Value
Index	Enable or disable the activity of the corresponding community	Enable
Version	Select or disable the SNMP	Version1

	Version Version 1: MIB1 Version 2: MIB2	
IP Address	Specify the IP address of the SNMP Manager for SNMP Trap Report	192.168.2.100
Community	Specify the type of community (public or private) for SNMP Manager	Public

Table B-11

B-1-12 Software Upgrade (as shown in Table B-12)

Parameter	Description	Default Value
TFTP Server IP Address	Specify the IP address of the TFTP server to upgrade the firmware of the AP	192.168.2.100
Upgrade Filename	Specify the filename of requested firmware stored in TFTP server	Soho.bin

Table B-12

Appendix C Regulatory Compliance Information

Radio Frequency Interference Requirements

This device complies with Part 15 of FCC Rules and Canada RSS-210.

Operation is subject to the following conditions:

1. This device may not cause harmful interference.
2. This device must accept any interference received, including interference that may cause undesired operation.

This transmitter must not be co-located or operating in conjunction with any other antenna of transmitter.

Interference Statement

This equipment has been tested and found to comply with the limits for a Class B digital device pursuant to Part 15 of the FCC Rules and Regulation. These limits are designed to provide reasonable protection against harmful interference in a residential installation. This equipment generates, uses, and can radiate radio frequency energy and, if not installed and used in accordance with the instruction manual, may cause harmful interference to nearby TV's, VCR's, radio, computers, or other electronic devices. To minimize or prevent such interference, this equipment should not be placed or operated near these devices. If interference is experienced, moving the equipment away from them will often reduce or eliminate the interference.

However, there is no guarantee that interference will not occur in a particular installation. If the equipment does cause harmful interference to radio or television reception, which can be determined by turning the equipment off and on, the user is encouraged to try to correct the interference by one or more of the following measures:

- Re-orient or relocate the receiving antenna.
- Increase the separation between the equipment and receiver.

- Connect the equipment into an outlet on a circuit different from that which the receiver is connected.
- Consult the dealer or an experienced radio/TV technician for help.

Professional Installation

Per the recommendation of the FCC, the installation of high gain directional antenna to the system, which are intended to operated solely as a point-to-point system and whose total power exceeds +36dBm EIRP, require professional installation. It is the responsibility of the installer and the end user that the high power systems are operated strictly as a point-to-point system.

Systems operating as a point-to-multipoint system or use non directional antennas cannot exceed +36dBm EIRP power requirement under any circumstances and do not require professional installation.