

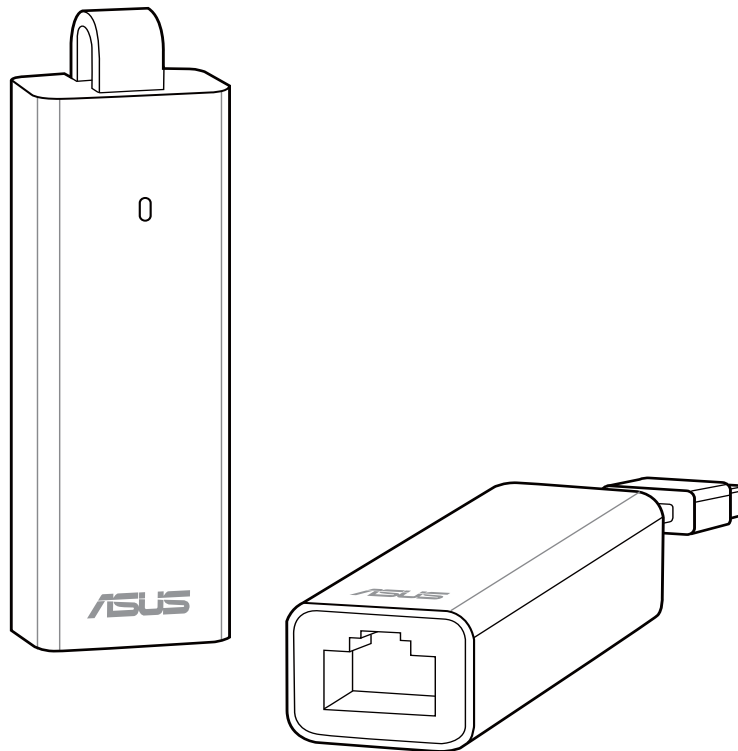


WL-330NUL

All-in-One Wireless-N Pocket Router

全方位隨身分享器

(For 802.11g/b/n Wireless Networks)



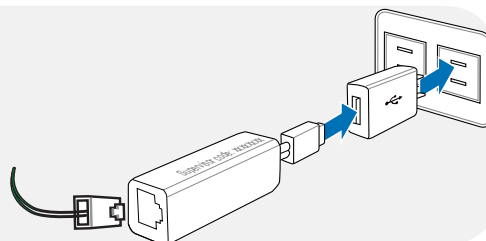
Quick Start Guide

English.....	3
繁體中文	12
简体中文	21
Bahasa Indonesia.....	30
Bahasa Malaysia	39
ไทย	48
Türkçe	57

● Use WL-330NUL as a portable router

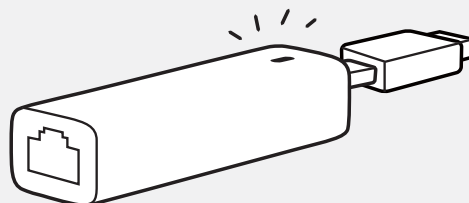
In circumstances of weak wireless signal or Ethernet network alone, such as in a hotel, conference room or office, follow the steps below to access the Internet through WL-330NUL.

1. Connect the Ethernet cable to WL-330NUL and plug it into a power outlet.



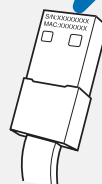
2. When the LED indicator stops blinking and turns into a solid light in about 30 seconds, it indicates that WL-330NUL has finished booting up.

“Solid Light”



3. Select WL-330NUL's private network name. The default network name is **WL-330NUL-private-xxxx** (xxxx is the last four numbers of WL-330NUL's MAC address).

MAC address



4. Enter the private network password, which you can find on your WL-330NUL labeled as supervisor code.

Supervisor code: xxxxxxxx



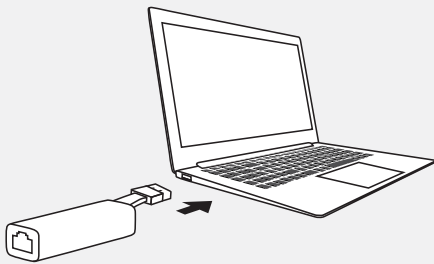
5. Launch your web browse.

● **For Windows® users**

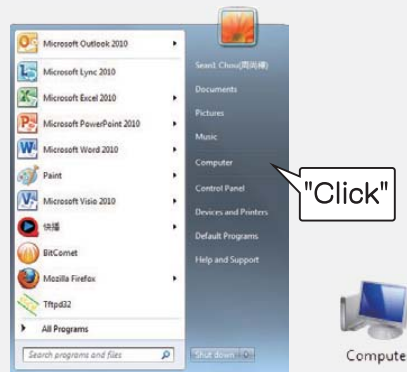
If your device is running on Windows® operating system, **ensure that you have installed the WL-330NUL Utility before connecting to the Internet.**

A. Utility installation

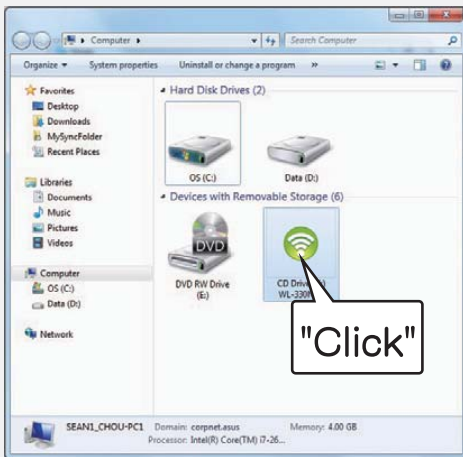
1. Insert WL-330NUL into the device's USB port.



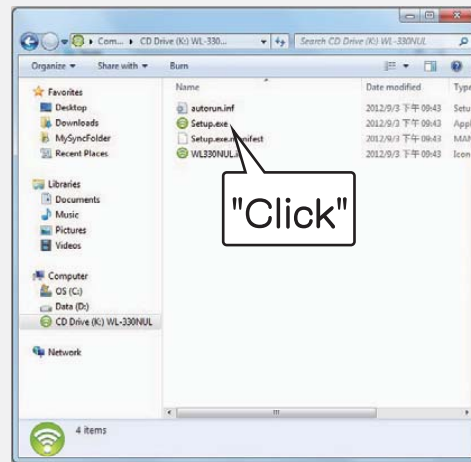
2. Click **Start > Computer** or click the computer icon on the desktop.



3. Click the WL-330NUL icon in **Device with Removable Storage**.



4. Double-click **Setup.exe** to install the WL-330NUL utility.

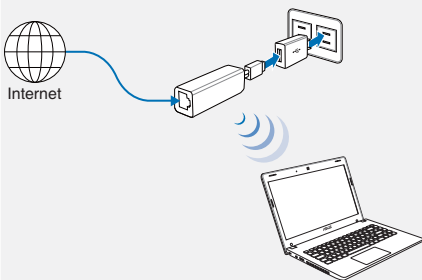


B. Internet connection

Select one of the following ways to access the Internet:

Mode 1

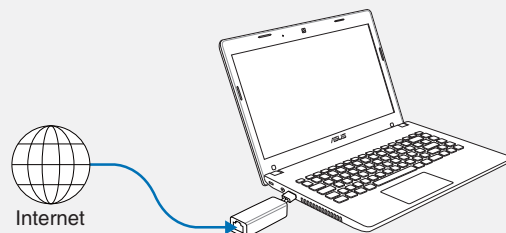
Connect an Ethernet cable to WL-330NUL and plug to a power source



1. Connect to the WL-330NUL private network name.
2. Enter the private network password.
3. Launch your web browser and start surfing the Internet.

Mode 2

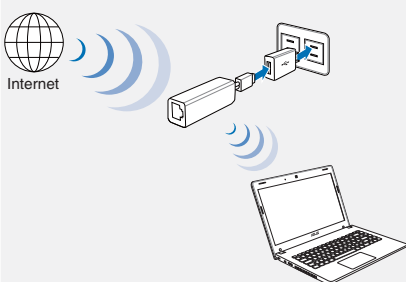
Connect WL-330NUL to a computer via an Ethernet cable



1. Launch your browser and start surfing the Internet.
To configure the router settings, please launch the WL-330NUL utility.

Mode 3

Plug WL-330NUL to a power source



1. Connect to the WL-330NUL private network name.
2. Enter the private network password.
3. Use the WL-330NUL utility to select a Wi-Fi network (SSID) and connect to the Internet.

Mode 4

Connect WL-330NUL to a computer

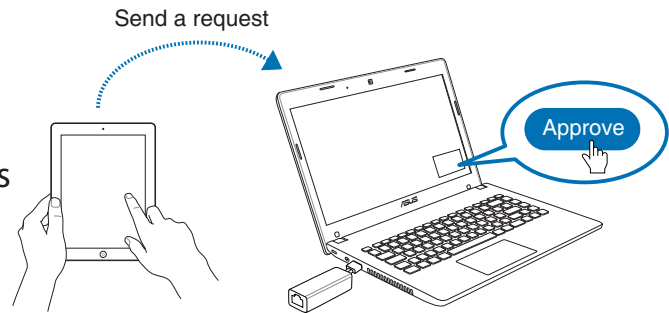


1. Select a Wi-Fi network (SSID) through the Utility and connect to the Internet.

C. One-click sharing

To share Internet access:

1. Let the guest client connect to Wi-Fi network (SSID): WL-330NUL-Guest-xxxx (xxxx is the last four numbers of WL-330NUL's MAC address).
2. Launch the web browser.
3. Follow the onscreen instructions.

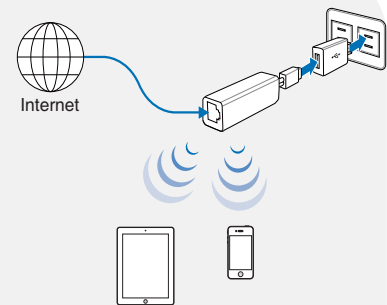


.....
 Ensure to launch the utility before using the Guest Access function.

• For tablet PC and smartphone users

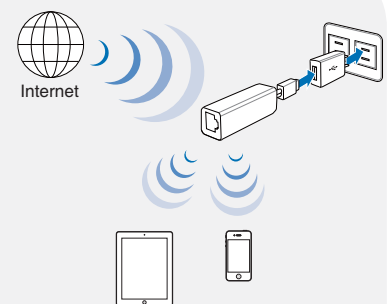
To access the Internet via an Ethernet cable :

1. Connect to the WL-330NUL private network name.
2. Enter the private network password.
3. Launch the web browser and start surfing the Internet.



To access the Internet wirelessly:

1. Connect to the WL-330NUL private network name.
2. Enter your private network password.
3. Go to <http://www.asusnetwork.net>.
4. Enter the supervisor code shown on the surface of WL-330NUL.
5. Open the **Wireless Setting** page.
6. Select a Wi-Fi network (SSID) and connect to the Internet.
7. Launch the web browser and start surfing the Internet.

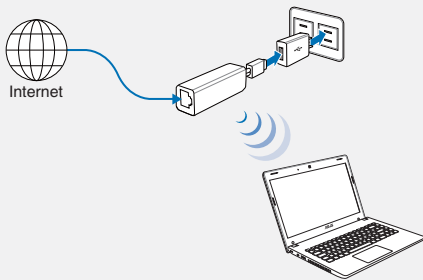


• For MAC OS X users

Select one of the ways to access the Internet:

Mode 1

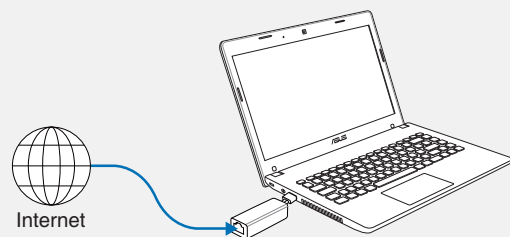
Connect an Ethernet cable to WL-330NUL and plug to a power source



Follow the steps in **To access the Internet via Ethernet** in section **For tablet PC and smartphone users.**

Mode 2

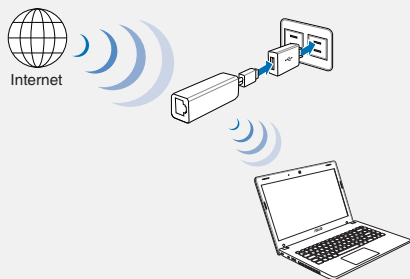
Connect WL-330NUL to a computer via an Ethernet cable



1. Launch your browser and start surfing the Internet.

Mode 3

Plug WL-330NUL to a power source



Follow the steps in **To access the Internet wirelessly** in section **For tablet PC and smartphone users.**

Mode 4

Connect WL-330NUL to a computer



1. Go to <http://www.asusnetwork.net>.
2. Enter the supervisor code shown on the surface of WL-330NUL.
3. Open the **Wireless Setting** page.
4. Select a Wi-Fi network (SSID) and connect to the Internet.

Federal Communications Commission Statement

This device complies with Part 15 of the FCC Rules. Operation is subject to the following two conditions:

- This device may not cause harmful interference.
- This device must accept any interference received, including interference that may cause undesired operation.

This equipment has been tested and found to comply with the limits for a class B digital device, pursuant to part 15 of the FCC Rules. These limits are designed to provide reasonable protection against harmful interference in a residential installation.

This equipment generates, uses and can radiate radio frequency energy and, if not installed and used in accordance with the instructions, may cause harmful interference to radio communications. However, there is no guarantee that interference will not occur in a particular installation. If this equipment does cause harmful interference to radio or television reception, which can be determined by turning the equipment off and on, the user is encouraged to try to correct the interference by one or more of the following measures:

- Reorient or relocate the receiving antenna.
- Increase the separation between the equipment and receiver.
- Connect the equipment into an outlet on a circuit different from that to which the receiver is connected.
- Consult the dealer or an experienced radio/TV technician for help.



Warning: Any changes or modifications not expressly approved by the party responsible for compliance could void the user's authority to operate the equipment. Prohibition of Co-location This device and its antenna(s) must not be co-located or operating in conjunction with any other antenna or transmitter.

Prohibition of Co-location

This device and its antenna(s) must not be co-located or operating in conjunction with any other antenna or transmitter.

IMPORTANT NOTE:

Radiation Exposure Statement: This equipment complies with FCC radiation exposure limits set forth for an uncontrolled environment. End users must follow the specific operating instructions for satisfying RF exposure compliance. To maintain compliance with FCC exposure compliance requirement, please follow operation instruction as documented in this manual.

Declaration of Conformity for R&TTE directive 1999/5/EC

Essential requirements – Article 3

Protection requirements for health and safety – Article 3.1a

Testing for electric safety according to EN 60950-1 has been conducted. These are considered relevant and sufficient.

Protection requirements for electromagnetic compatibility – Article 3.1b

Testing for electromagnetic compatibility according to EN 301 489-1 and EN 301 489-17 has been conducted. These are considered relevant and sufficient.

Effective use of the radio spectrum – Article 3.2

Testing for radio test suites according to EN 300 328- 2 has been conducted. These are considered relevant and sufficient.

FCC/CE Mark Warning

This is a Class B product, in a domestic environment, this product may cause radio interference, in which case the user may be required to take adequate measures. Operation Channels: CH1~11 for N. America; Ch1~14 for Japan; CH1~13 for Europe (ETSI)

Canada, Industry Canada (IC) Notices

This Class B digital apparatus complies with Canadian ICES-003 and RSS-210.

Operation is subject to the following two conditions: (1) this device may not cause interference, and (2) This device must accept any interference, including interference that may cause undesired operation of the device.

Radio Frequency (RF) Exposure Information

The radiated output power of the ASUS Wireless Device is below the Industry Canada (IC) radio frequency exposure limits. The ASUS Wireless Device should be used in such a manner such that the potential for human contact during normal operation is minimized.

This device has been certified for use in Canada. Status of the listing in the Industry Canada's REL (Radio Equipment List) can be found at the following web address: <http://www.ic.gc.ca/app/sitt/reletel/srch/nwRdSrch.do?lang=eng>

Additional Canadian information on RF exposure also can be found at the following web address: <http://www.ic.gc.ca/eic/site/smt-gst.nsf/eng/sf08792.html>

Canada, avis d'Industry Canada (IC)

Cet appareil numérique de classe B est conforme aux normes canadiennes ICES-003 et RSS-210.

Son fonctionnement est soumis aux deux conditions suivantes : (1) cet appareil ne doit pas causer d'interférence et (2) cet appareil doit accepter toute interférence, notamment les interférences qui peuvent affecter son fonctionnement.

Informations concernant l'exposition aux fréquences radio (RF)

La puissance de sortie émise par l'appareil de sans fil ASUS est inférieure à la limite d'exposition aux fréquences radio d'Industry Canada (IC). Utilisez l'appareil de sans fil ASUS de façon à minimiser les contacts humains lors du fonctionnement normal.

Ce périphérique est homologué pour l'utilisation au Canada. Pour consulter l'entrée correspondant à l'appareil dans la liste d'équipement radio (REL - Radio Equipment List) d'Industry Canada rendez-vous sur: <http://www.ic.gc.ca/app/sitt/reltel/srch/nwRdSrch.do?lang=eng>

Pour des informations supplémentaires concernant l'exposition aux RF au Canada rendez-vous sur : <http://www.ic.gc.ca/eic/site/smt-gst.nsf/eng/sf08792.html>

Industry Canada Statement

This device complies with RSS-210 of the industry Canada Rules. Operation is subject to the following two conditions:

- This device may not cause harmful interference.
- This device must accept any interference received, including interference that may cause undesired operation.

IMPORTANT NOTE:

Radiation Exposure Statement: This equipment complies with IC radiation exposure limits set forth for an uncontrolled environment. End users must follow the specific operating instructions for satisfying RF exposure compliance. To maintain compliance with IC RF exposure compliance requirement, please follow operation instruction as documented in this manual.

NCC 警語

經型式認證合格之低功率射頻電機，非經許可，公司、商號或使用者均不得擅自變更頻率、加大功率或變更原設計之特性及功能。低功率射頻電機之使用不得影響飛航安全及干擾合法通信；經發現有干擾現象時，應立即停用，並改善至無干擾時方得繼續使用。

前項合法通信，指依電信法規定作業之無線電通信。低功率射頻電機須忍受合法通信或工業、科學及醫療用電波輻射性電機設備之干擾。

REACH

Complying with the REACH (Registration, Evaluation, Authorisation, and Restriction of Chemicals) regulatory framework, we published the chemical substances in our products at ASUS REACH website at <http://csr.asus.com/english/REACH.htm>

Networks Global Hotline Information

Area	Hotline Number	Support Languages	Availability
Australia	1300-2787-88	English	Mon. to Fri. 8:00-20:00
Austria	0043-820240513	German	Mon. to Fri. 9:00-18:00
Belgium	0032-78150231	Dutch /French	Mon. to Fri. 9:00-17:00
China	400-620-6655	Simplified Chinese	Mon. to Sun. 9:00-18:00
Denmark	0045-3832-2943	Danish/English	Mon. to Fri. 9:00-17:00
Finland	00358-9693-7969	Finnish/English/ Swedish	Mon. to Fri. 10:00-18:00
France	0033-170949400	French	Mon. to Fri. 9:00-17:45
Greece	00800-44-14-20-44		Mon. to Fri. 9:00-13:00 14:00-18:00
Hong Kong	3582-4770	Cantonese/ Chinese/English	Mon. to Fri. 10:00-20:00 Sat. 10:00-17:00
Indonesia	0062-2129495000	Bahasa Indonesia	Mon. to Fri 9:30 - 18: 00
	500128 (Local Only)		Sat. 9:30 - 12:00
Ireland	0035-31890719918	English	Mon. to Fri. 9:00-17:00
Italy	199-400089	Italian	Mon. to Fri. 9:00-13:00 14:00-18:00

Networks Global Hotline Information

Japan	0800-123-2787	Japanese	Mon. to Fri. 9:00-18:00 Sat. to Sun. 9:00-17:00
Malaysia	+603 2148 0827 (Check Repair Detail Status Only)/ +603-6279-5077	Bahasa Melayu/ English	Mon. to Fri. 10:00-19:00
Netherlands / Luxembourg	0031-591-570290	Dutch / English	Mon. to Fri. 9:00-17:00
New Zealand	0800-278-788/ 0800-278-778	English	Mon. to Fri. 9:00-17:00
Norway	0047-2316-2682	Norwegian /English	Mon. to Fri. 9:00-17:00
Philippines	+632-636 8504/ 180014410573	English	Mon. to Fri. 9:00-18:00
Poland	00225-718-033/ 00225-718-040	Polish	Mon. to Fri. 9:00-17:00 8:30-17:30
Portugal	707-500-310	Portuguese	Mon. to Fri. 9:00-17:00
Russia	+8-800-100-ASUS/ +7-495-231-1999	Russian/ English	Mon. to Fri. 9:00-18:00
Singapore	+65-6720-3835 (Check Repair Detail Status Only)/ +65-66221701	English	Mon. to Fri. 11:00-19:00
Slovak	00421-232-162-621	Czech	Mon. to Fri. 8:00-17:00
Spain	902-88-96-88	Spanish	Mon. to Fri. 9:00-18:00
Sweden	0046-8587-6940	Swedish/ English	Mon. to Fri. 9:00-17:00

Networks Global Hotline Information

Switzerland	0041-848111010	German/French	Mon. to Fri. 9:00-18:00
	0041-848111014	French	Mon. to Fri. 9:00-17:45
	0041-848111012	Italian	Mon. to Fri. 9:00-17:00
Taiwan	0800-093-456/ 02-81439000	Traditional Chinese	Mon. to Fri. 9:00-12:00 13:30-18:00
Thailand	+662-679-8367 -70/ 001 800 852 5201	Thai/English	Mon. to Fri. 9:00-18:00
Turkey	+90-216-524-3000	Turkish	Mon. to Fri. 09:00-18:00
United Kingdom	0044-870-1208340/ 0035-31890719918	English	Mon. to Fri. 9:00-17:00
USA/Canada	1-812-282-2787	English	Mon. to Fri. 8:30am-12:00am EST (5:30am-9:00pm PST) Sat. to Sun. 9:00am-6:00pm EST (6:00am-3:00pm PST)

MANUFACTURER

ASUSTeK Computer Inc.

Tel: +886-2-2894-3447

Address: 4F, No. 150, LI-TE RD., PEITOU, TAIPEI 112, TAIWAN

AUTHORISED REPRESENTATIVE IN EUROPE

ASUS Computer GmbH

Address: HARKORT STR. 21-23, 40880 RATINGEN, GERMANY

AUTHORISED DISTRIBUTORS IN TURKEY

BOGAZICI BIL GISAYAR SAN. VE TIC. A.S.

Tel: +90 212 3311000

Address: AYAZAGA MAH. KEMERBURGAZ CAD. NO.10 AYAZAGA/ISTANBUL

CIZGI Elektronik San. Tic. Ltd. Sti.

Tel: +90 212 3567070

Address: CEMAL SURURI CD. HALIM MERIC IS MERKEZI

No: 15/C D:5-6 34394 MECIDIYEKOY/ ISTANBUL

EEE Yönetmeliğine Uygundur.