

Install Guide

You can get the User Guide online at www.tendacn.com for featured settings of the router.
Wireless N300 Easy Setup Router
Model: F3

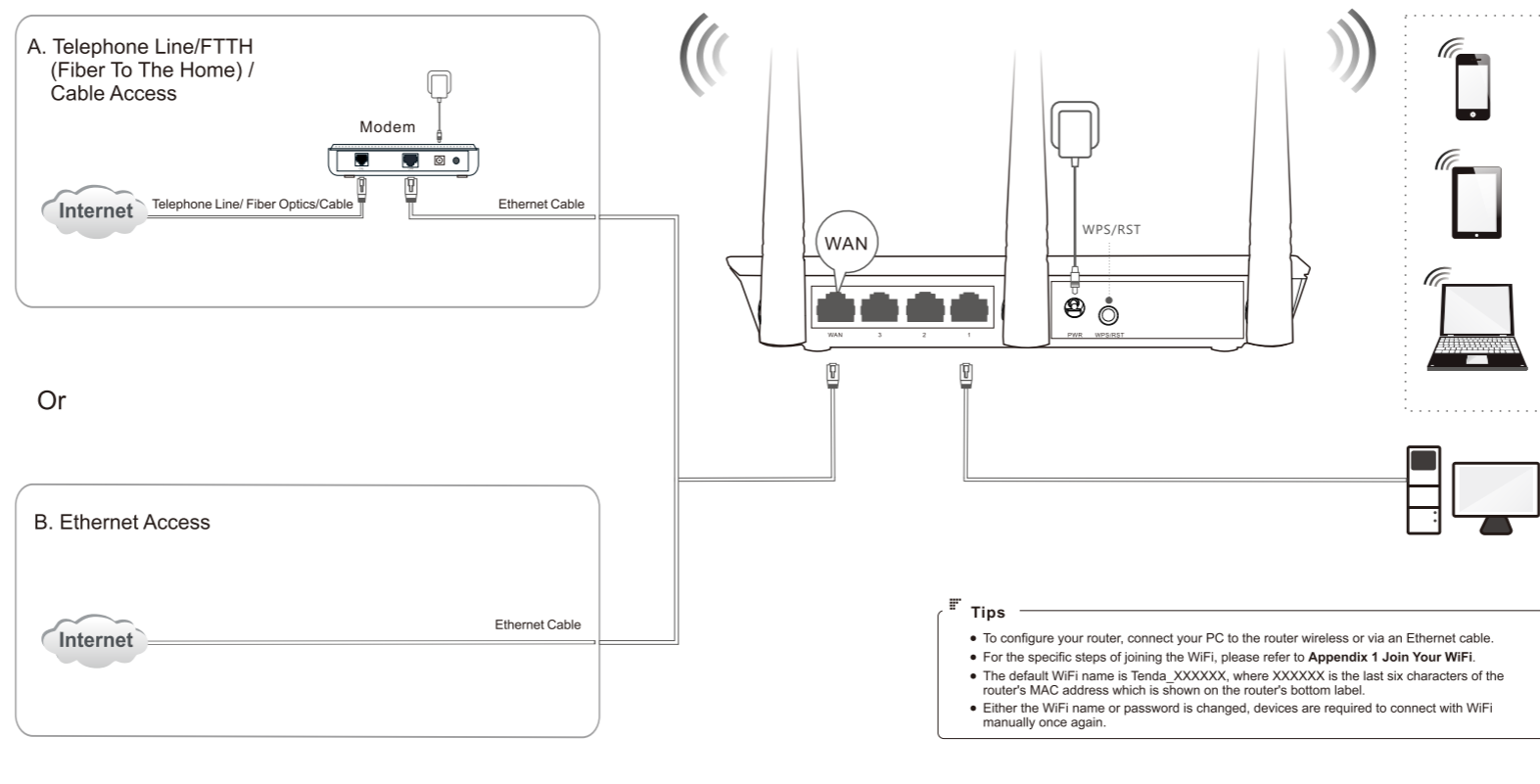
Package Contents

- Wireless Router*1
- Power Adapter*1
- Ethernet Cable*1
- Install Guide*1

If any item is incorrect, missing or damaged, please keep the original package and contact your dealer for immediate replacement.

1 Connect Your Router

Select Telephone Line/FTTH/Cable Access or Ethernet Access according to the type of WAN medium your ISP provided.



States of LED indicators of the router that is powered on.

LED Indicator	Status	Description
SYS	Blinking	The system is working fine.
	Off	There is no power supply, or the router malfunctions.
WIFI	Solid	WiFi is enabled.
	Blinking	The Router is transmitting WiFi data.
1/2/3	Off	WiFi is disabled.
	Solid	The LAN port is well-connected.
WAN	Blinking	The LAN port is transmitting data.
	Off	No link is detected on the LAN port.
WAN	Solid	The WAN port is well-connected.
	Blinking	The WAN port is transmitting data.
WPS	Off	No Ethernet cable is connected to the WAN port.
	Solid (5 minutes)	WPS negotiation is successful. This LED indicator stays solid for 5 minutes, and then turns off.
WPS	Blinking	The router is waiting or is performing WPS negotiation with a wireless client.
	Off	• WPS function is disabled. • WPS negotiation is failed.
T	Reserved.	

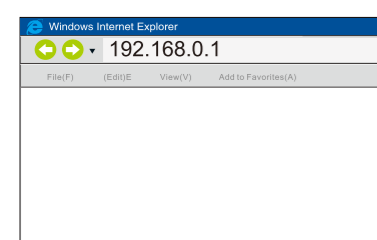
Your router's buttons may differ. Please refer to the actual product.

Button	Description
WPS/RST	Press and hold it for about 8 seconds and then release it (all LED indicators will light up once) to reset the router to factory default settings. Press and hold it for 1-3 seconds, and then release it to enable the WPS feature. Within 2 minutes, enable the wireless device's WPS feature to establish WPS connection.

*Images herein are for references only. The actual product may differ.

2 Configure Your Router

1. Start a web browser, say IE, type **192.168.0.1** in the address bar, and tap **Enter** on the keyboard.



Tips
If the router web UI is inaccessible, try www.tendawifi.com.

2. If you use the router for the first time or after you reset the router, the router automatically detects your internet connection type. You are recommended to select the detected type to configure the internet settings. Besides, the following table may help you understand your internet connection type and complete the configuration.



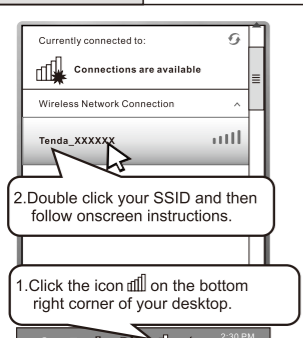
Internet Connection Type	Features	Instructions
PPPoE	If you can access the internet only after setting up a dial-up connection on the computer using a user name and password provided by your ISP, select PPPoE .	Select PPPoE , type the PPPoE user name and password provided by ISP, customize a WiFi name and password to secure your wireless network, and click OK .
Dynamic IP	If you can access the internet without setting any parameters on your computer, select Dynamic IP .	Select Dynamic IP , customize a WiFi name and password to secure your wireless network, and click OK .
Static IP	If you can access the internet only after setting static IP address and other related information on your computer, select Static IP .	Select Static IP , type the static IP address and related information provided by ISP, customize a WiFi name and password to secure your wireless network, and click OK .

--End. You can now try accessing the internet.

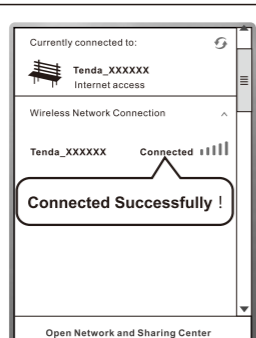
Appendix 1 Join in Your WiFi

The default WiFi name is Tenda_XXXXXX. There is no default WiFi password.

Windows 7

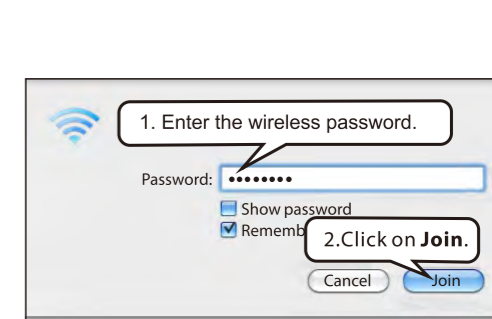
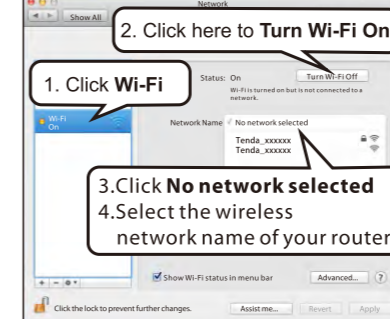
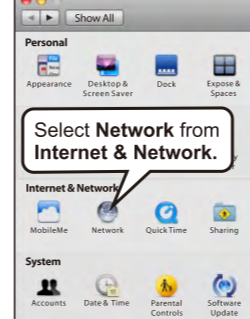
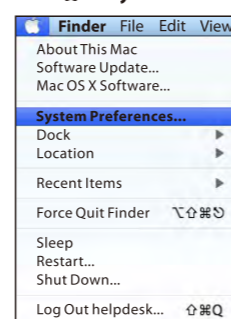


1. Click the icon on the bottom right corner of your desktop.
2. Double click your SSID and then follow onscreen instructions.

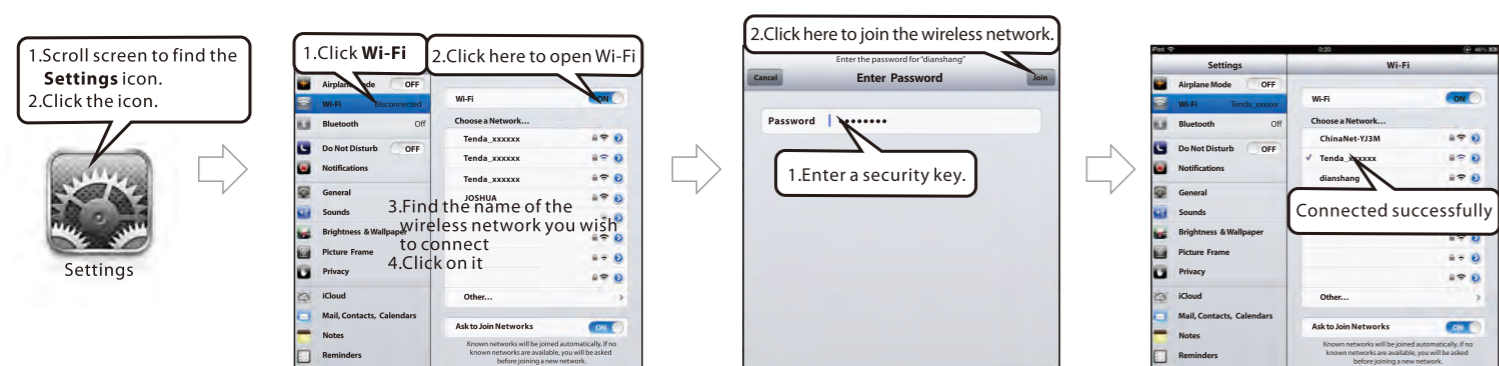


Mac

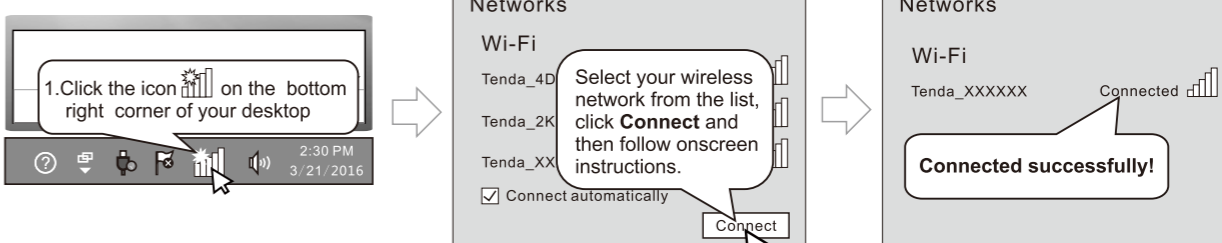
Click **Apple** -> **System Preferences**.



iPhone/iPad

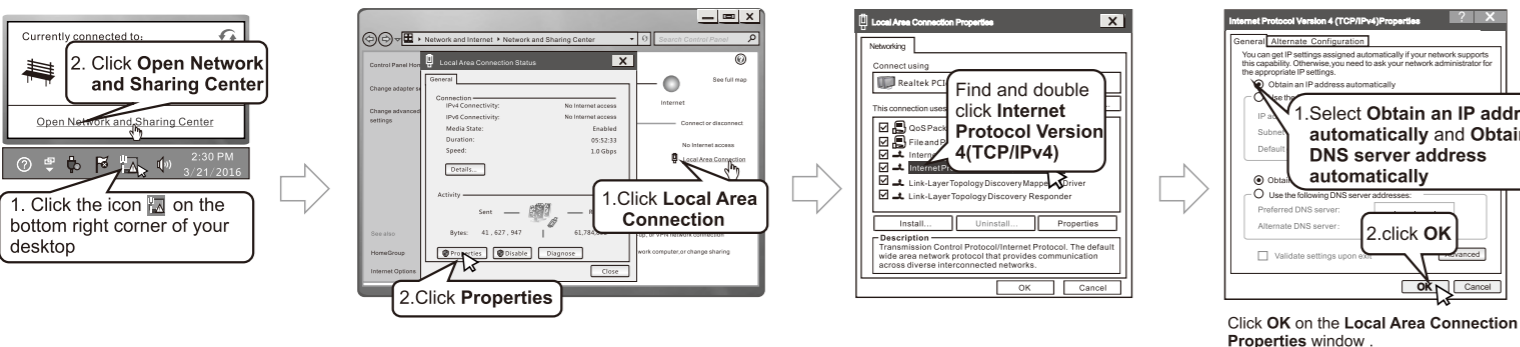


Windows 8

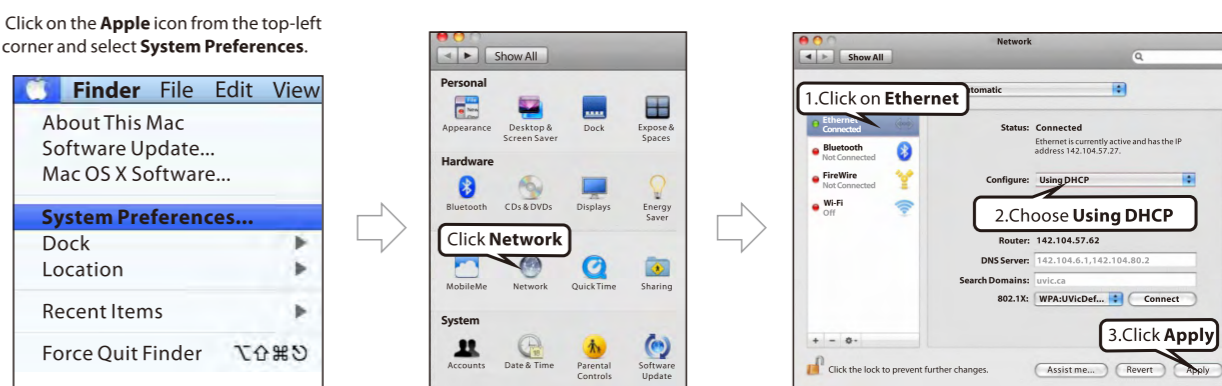


Appendix 2 Configure Your PC

Windows 7



MAC



FAQs

Q1: Where should I place my wireless router for optimum performance?

- A1:** For optimum performance, place your device.
- Near the center of the area where your computers, smart phones and other devices operate, and preferably within line of sight to your wireless devices.
 - In an elevated location such as a high shelf, keeping the number of walls and ceilings to a minimum between the Router and other clients such as computers and smart phones.
 - Away from electrical devices that are potential sources of interference, such as ceiling fans, home security systems, or microwaves.
 - Away from any large metal surfaces, such as a solid metal door or aluminum studs.
 - Away from other materials such as glass, insulated walls, fish tanks, mirrors, brick, and concrete that can also affect your wireless signal.

Q2: I cannot log in to the wireless router's web UI. What should I do?

- A2:** Please do as the following one by one until you solve your problem.
- Verify the Ethernet cable between your PC and the router is intact and well-connected. If not, change another Ethernet cable.
 - Clear cache of your browser, or change another browser.
 - Double check the TCP/IP settings on your PC. Verify that it is set to obtain an IP automatically. For details, see **Appendix 2 Configure Your PC** here.
 - Press and hold the **WPS/RST** button for about 8 seconds and then release it to reset the router to factory default settings. Then try logging in to it again.
 - Try accessing the Web UI from another PC, smart phone or iPad.

Q3: I forget my WiFi password (security key), what should I do?

- A3:** Please do as the following one by one until you solve your problem.
- Log in to the wireless router's Web UI, and view the WiFi password on the Wireless Settings page.
 - Restore the wireless router to factory default settings, and reset the WiFi password.
Restore Method: Press and hold the **WPS/RST** button for about 8 seconds and then release it.

Q4: I forget my login password, what should I do?

- A4:** Restore the wireless router to factory default settings.
Restore Method: Press and hold the **WPS/RST** button for about 8 seconds and then release it.

Shenzhen Tenda Technology Co., Ltd.
6-8 Floor, Tower E3, No.1001, Zhongshanyuan Road,
Nanshan District, Shenzhen, China. 518052
Website: <http://www.tendacn.com>
E-mail: support@tendacn.com
YouTube: Tendas1999
Skype: tendasz
Phone: Global hotline: (86 755)27657180

© 2016 Shenzhen Tenda Technology Co., Ltd. All rights reserved.
Tenda is a registered trademark legally held by Shenzhen Tenda Technology Co., Ltd.
Other brand and product names mentioned herein are trademarks or registered trademarks of their respective holders. Specifications are subject to change without notice.

CE

CE Mark Warning

This is a Class B product. In a domestic environment, this product may cause radio interference, in which case the user may be required to take adequate measures.

NOTE: (1) The manufacturer is not responsible for any radio or TV interference caused by unauthorized modifications to this equipment. (2) To avoid unnecessary radiation interference, it is recommended to use a shielded RJ45 cable.

Declaration of Conformity
Hereby, SHENZHEN TENDA TECHNOLOGY CO. LTD. declares that the radio equipment type F3 is in compliance with Directive 2014/53/EU.
The full text of the EU declaration of conformity is available at the following internet address: <http://www.tendacn.com/en/service/page/ce.html>
Operate Frequency: 2412-2472MHz
EIRP Power (Max.): 19dBm
Software Version: V12.01.01.29

FCC

FCC Statement

This device complies with Part 15 of the FCC Rules. Operation is subject to the following two conditions: (1) This device may not cause harmful interference, and (2) this device must accept any interference received, including interference that may cause undesired operation.

This equipment has been tested and found to comply with the limits for a Class B digital device, pursuant to Part 15 of the FCC Rules. These limits are designed to

provide reasonable protection against harmful interference in a residential installation. This equipment generates, uses and can radiate radio frequency energy and, if not installed and used in accordance with the instructions, may cause harmful interference to radio communications. However, there is no guarantee that interference will not occur in a particular installation. If this equipment does cause harmful interference to radio or television reception, which can be determined by turning the equipment off and on, the user is encouraged to try to correct the interference by one or more of the following measures:

- Reorient or relocate the receiving antenna.
- Increase the separation between the equipment and receiver.
- Connect the equipment into an outlet on a circuit different from that to which the receiver is connected.
- Consult the dealer or an experienced radio/TV technician for help.

Caution: Any changes or modifications not expressly approved by the party responsible for compliance could void the user's authority to operate this equipment. This transmitter must not be co-located or operating in conjunction with any other antenna or transmitter.

Radiation Exposure Statement
This equipment complies with FCC radiation exposure limits set forth for an uncontrolled environment. This equipment should be installed and operated with minimum distance 20cm between the radiator & your body.

NOTE: (1) The manufacturer is not responsible for any radio or TV interference caused by unauthorized modifications to this equipment. (2) To avoid unnecessary radiation interference, it is recommended to use a shielded RJ45 cable.