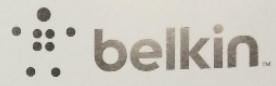
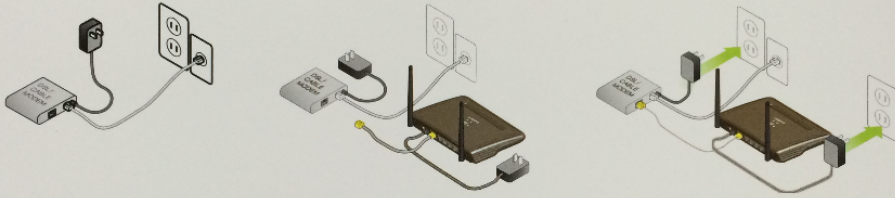


Wi-Fi ROUTER N300



1 Unplug modem and connect router



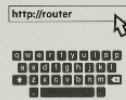
2 See label and connect computer (or phone/tablet) to network name and password



Network Name (SSID) [your Network Name]
Password [your Password]



3 Finish setup by typing **http://router** in browser, or try **http://192.168.2.1**



F9K1010v2 • 8820-02164 Rev. A00

1	2		3		4		5		6	
A	<div style="border: 1px solid red; padding: 10px;"> <p>FCC Statement</p> <p>DECLARATION OF CONFORMITY WITH FCC RULES FOR ELECTROMAGNETIC COMPATIBILITY</p> <p>We, Belkin International, Inc., of 12045 E. Waterfront Drive, Playa Vista, CA 90094, declare under our sole responsibility that the device, F9K1010v2, complies with Part 15 of the FCC Rules. Operation is subject to the following two conditions: (1) this device may not cause harmful interference, and (2) this device must accept any interference received, including interference that may cause undesired operation.</p> <p>Federal Communications Interference Statement</p> <p>This equipment has been tested and found to comply with the limits for a Class B digital device, pursuant to Part 15 of the FCC Rules. These limits are designed to provide reasonable protection against harmful interference in a residential installation.</p> <p>This equipment generates, uses, and can radiate radio frequency energy, and if not installed and used in accordance with the instructions, may cause harmful interference to radio communications. However, there is no guarantee that interference will not occur in a particular installation. If this equipment does cause harmful interference to radio or television reception, which can be determined by turning the equipment off and on, the user is encouraged to try and correct the interference by one or more of the following measures:</p> <ul style="list-style-type: none"> • Reorient or relocate the receiving antenna. • Increase the distance between the equipment and the receiver. • Connect the equipment to an outlet on a circuit different from that to which the receiver is connected. • Consult the dealer or an experienced radio/TV technician for help. <p>FCC Caution: Any changes or modifications not expressly approved by the party responsible for compliance could void the user's authority to operate this equipment.</p> <p>Radiation Exposure Statement:</p> <p>This equipment complies with FCC radiation exposure limits set forth for an uncontrolled environment. This equipment should be installed and operated with a minimum distance of 20cm between the radiator and your body.</p> <p>This transmitter must not be co-located or operating in conjunction with any other antenna or transmitter.</p> </div>									
B										
C										
D	<p>NOTES(技术要求):</p> <p>1.External dimension(外尺寸): 120*120mm.</p> <p>2.Printing color(印刷颜色): black printing(黑色印刷).</p> <p>3.Material(材质):128g copperplate paper(128g铜版纸) .</p> <p>4.Coating(表面处理): Varnishing(过光油)——双面过光油.</p> <p>5.Output lpi(输出网线): 200 lpi.</p> <p>6.Tolerance(公差): L(长)*W(宽):±1mm.</p> <p>7.Raw materials and the corresponding post processing should meet requirements defined in the T&W Environmental Protection Technical Standards. (原材料及后处理工艺均能满足我司《环保技术标准》要求).</p>									
1	2		3		4		5		6	

Remark	Description	Editor	Date

F9K1010v2 8820-02163 Rev. A00

DIM	TOL±			
RANGE	C1	C2	C3	C4
0~6	0.1	0.1	0.15	0.2
6~30	0.2	0.3	0.4	0.5
30~80	0.25	0.5	0.9	1.2
80~180	0.3	0.8	1.2	1.5
180~315	0.5	1.3	1.8	3
315~500	0.7	1.5	2.5	4
500~800	0.9	1.8	3	5
ANG.TOL±	0°~30°/0.1°	30°~60°/0.3°	60°~90°/0.5°	

		CUSTOMER:		T&W 同维 SHENZHEN GONGJIN ELECTRONICS CO., LTD.			
		Belkin					
TITLE:		MODEL:			PART NO:		
彩页		N300(F9K1010v2)			614000002092		
UNITS	mm	VER:	A0	DRAW	饶鸿	DATE: 15'03,17	
MAT'L	/	SCALE	1:1	CHECK	李浩铭		
FINISH	/	SHEET	1/1	PDE	N/A		