



Support [support.ubnt.com](http://support.ubnt.com)

Wiki Page [wiki.ubnt.com](http://wiki.ubnt.com)

Support Forum [forum.ubnt.com](http://forum.ubnt.com)

Downloads [downloads.ubnt.com](http://downloads.ubnt.com)



© 2012-2013 Ubiquiti Networks, Inc. All rights reserved.

**mPower<sup>™</sup> PRO**  
8-Port mFi Power Strip  
with Ethernet and Wi-Fi  
Model: mPower PRO



QUICK START GUIDE







## mFi Products

Ubiquiti Networks offers a variety of products for the mFi platform. For additional details, visit [www.ubnt.com/mfi](http://www.ubnt.com/mfi)



Ceiling Mount  
Motion Sensor  
*mFi-MSC*



Wall Mount  
Motion Sensor  
*mFi-MSW*



Temperature  
Sensor  
*mFi-THS*



Current Sensor  
*mFi-CS*



Door Sensor  
*mFi-DS*



Thermostat  
*Coming Soon!*



mPort  
*mPort*



mPort Serial  
*mPort-S*



Power Adapter  
*mPower mini*



Power Strip  
*mPower*

## Introduction

Thank you for purchasing the Ubiquiti Networks™ mFi™ mPower™ PRO. The mFi mPower PRO is designed for use with the mFi platform. Once connected, you can use the mFi Controller software to monitor your devices and define automation rules using your web browser.

## Package Contents



## Cloud Support

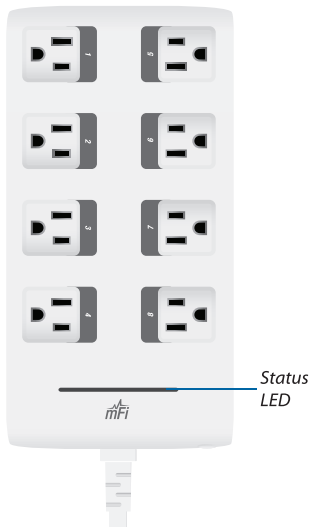
The mFi Controller software can be installed on a local system or run from the cloud at [mfi.ubnt.com](http://mfi.ubnt.com). Using the cloud allows you access from anywhere with an Internet connection.

## System Requirements

- Microsoft Windows XP, Windows Vista, Windows 7, Windows 8, or Mac OS X
- Java Runtime Environment 1.6 (or above)
- Web Browser: Mozilla Firefox, Google Chrome, or Microsoft Internet Explorer 8 (or above)

## Hardware Overview

### Top



### Front



L'émetteur-récepteur décrit ici émet de l'énergie de fréquence radio. Bien que le niveau de puissance est faible, l'énergie concentrée à partir d'une antenne directionnelle peut présenter un danger pour la santé. Ne pas permettre aux gens de se rapprocher de 20 cm à l'antenne lorsque l'émetteur est en marche.

Des renseignements supplémentaires sur l'exposition aux RF est disponible sur Internet à

[www.fcc.gov/oet/info/documents/bulletins](http://www.fcc.gov/oet/info/documents/bulletins)

### Industry Canada

This device complies with Industry Canada licence-exempt RSS standard(s). Operation is subject to the following two conditions:

1. This device may not cause interference, and
2. This device must accept any interference, including interference that may cause undesired operation of the device.

Le présent appareil est conforme aux CNR d'Industrie Canada applicables aux appareils radio exempts de licence. L'exploitation est autorisée aux deux conditions suivantes :

1. L'appareil ne doit pas produire de brouillage, et
2. L'utilisateur de l'appareil doit accepter tout brouillage radioélectrique subi, même si le brouillage est susceptible d'en compromettre le fonctionnement.

Under Industry Canada regulations, this radio transmitter may only operate using an antenna of a type and maximum (or lesser) gain approved for the transmitter by Industry Canada. To reduce potential radio interference to other users, the antenna type and its gain should be so chosen that the equivalent isotropically radiated power (e.i.r.p.) is not more than that necessary for successful communication.

Conformément à la réglementation d'Industrie Canada, le présent émetteur radio peut fonctionner avec une antenne d'un type et d'un gain maximal (ou inférieur) approuvé pour l'émetteur par Industrie Canada. Dans le but de réduire les risques de brouillage radioélectrique à l'intention des autres utilisateurs, il faut choisir le type d'antenne et son gain de sorte que la puissance isotrope rayonnée équivalente (p.i.r.e.) ne dépasse pas l'intensité nécessaire à l'établissement d'une communication satisfaisante.



## Compliance

### FCC

Changes or modifications not expressly approved by Ubiquiti Networks, Inc. could void the user's authority to operate the equipment.

This device complies with Part 15 of the FCC Rules. Operation is subject to the following two conditions:

1. This device may not cause interference, and
2. This device must accept any interference, including interference that may cause undesired operation of the device.

**NOTE:** This equipment has been tested and found to comply with the limits for a Class B digital device, pursuant to part 15 of the FCC Rules. These limits are designed to provide reasonable protection against harmful interference in a residential installation. This equipment generates, uses, and can radiate radio frequency energy and, if not installed and used in accordance with the instruction manual, may cause harmful interference to radio communications. However, there is no guarantee that interference will not occur in a particular installation. If this equipment does cause harmful interference to radio or television reception, which can be determined by turning the equipment off and on, the user is encouraged to try to correct the interference by one or more of the following measures:

- Reorient or relocate the receiving antenna.
- Increase the separation between the equipment and receiver.
- Connect the equipment into an outlet on a circuit different from that to which the receiver is connected.
- Consult the dealer or an experienced radio/TV technician for help.

### RF Exposure Warning

The transceiver described here emits radio frequency energy. Although the power level is low, the concentrated energy from a directional antenna may pose a health hazard. Do not allow people to come closer than 20 cm to the antenna when the transmitter is operating.

Additional information on RF exposure is available on the Internet at [www.fcc.gov/oet/info/documents/bulletins](http://www.fcc.gov/oet/info/documents/bulletins)

### Status LED

 The *Status* LED primary states are listed below:

**Solid yellow** When first powered on in factory default mode.



- **Flashing blue** Connecting to mFi Cloud or Controller.
- **Solid blue** Successfully connected to mFi Cloud or Controller.

**Device Reset Button** The *Device Reset* button serves two functions:

- **Restart** Restarts the device when you press and release it quickly.
- **Restore Factory Defaults** Press and hold until the LED alternates colors and then remains steady yellow to restore the device to the factory default settings.

**Ethernet Port** Used to connect to an Ethernet network and also for configuration of Wi-Fi and cloud settings.

**Circuit Breaker Reset Button** When excessive current triggers the circuit breaker, the outlets will shut off. Press this button to reset the circuit breaker.



## Hardware Installation

The mPower PRO can connect to your network using Ethernet or Wi-Fi. To configure the mPower PRO for use on a Wi-Fi network, you must first configure it using the Ethernet connection.

1. Connect an Ethernet cable from your LAN to the *Ethernet* port on the mPower PRO.



**Note:** Wi-Fi settings for the mPower PRO can be configured via LAN or by connecting an Ethernet cable directly from your computer. For details, refer to *Accessing the Configuration Portal* on page 13.

2. Connect the power plug to a power outlet.

## Wall-Mount

The mPower PRO includes an optional mounting plate.

1. Position the *Mounting Plate* on the wall with the text in the proper orientation, and mark the mounting holes on the wall.



## Safety Notices

1. Read, follow, and keep these instructions.
2. Heed all warnings.
3. Only use attachments/accessories specified by the manufacturer.



**WARNING:** Use only in a dry location.



**WARNING:** Do not plug in to another relocatable power tap.



**WARNING:** To reduce the risk of electric shock, use only indoors.

## Electrical Safety Information

1. Compliance is required with respect to voltage, frequency, and current requirements indicated on the manufacturer's label. Connection to a different power source than those specified may result in improper operation, damage to the equipment or pose a fire hazard if the limitations are not followed.
2. There are no operator serviceable parts inside this equipment. Service should be provided only by a qualified service technician.
3. This equipment's power cord has an integral safety ground wire intended for connection to a grounded safety outlet.
  - a. Never use an adapter plug to connect to a 2-wire outlet as this will defeat the continuity of the grounding wire.
  - b. The equipment requires the use of the ground wire as a part of the safety certification, modification or misuse can provide a shock hazard that can result in serious injury or death.
  - c. Contact a qualified electrician or the manufacturer if there are questions about the installation prior to connecting the equipment.
  - d. Building installation shall provide appropriate short-circuit backup protection.
  - e. Protective bonding must be installed in accordance with local national wiring rules and regulations.





QUALITY, LACK OF VIRUSES, TITLE, QUIET ENJOYMENT, FITNESS FOR A PARTICULAR PURPOSE AND NON-INFRINGEMENT. BUYER ACKNOWLEDGE THAT NEITHER UBIQUITI NETWORKS NOR ITS THIRD PARTY PROVIDERS CONTROLS BUYER'S EQUIPMENT OR THE TRANSFER OF DATA OVER COMMUNICATIONS FACILITIES, INCLUDING THE INTERNET, AND THAT THE PRODUCTS AND SERVICES MAY BE SUBJECT TO LIMITATIONS, INTERRUPTIONS, DELAYS, CANCELLATIONS AND OTHER PROBLEMS INHERENT IN THE USE OF THE COMMUNICATIONS FACILITIES. UBIQUITI NETWORKS, ITS AFFILIATES AND ITS AND THEIR THIRD PARTY PROVIDERS ARE NOT RESPONSIBLE FOR ANY INTERRUPTIONS, DELAYS, CANCELLATIONS, DELIVERY FAILURES, DATA LOSS, CONTENT CORRUPTION, PACKET LOSS, OR OTHER DAMAGE RESULTING FROM THESE PROBLEMS.

### Warranty Conditions

The foregoing warranty shall apply only if:

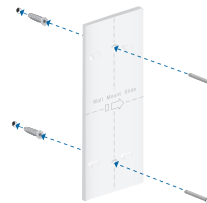
- (I) The Product has not been subjected to misuse, neglect or unusual physical, electrical or electromagnetic stress, or some other type of accident.
- (II) No modification, alteration or addition has been made to the Product by persons other than UBIQUITI NETWORKS or UBIQUITI NETWORK'S authorized representatives or otherwise approved by UBIQUITI NETWORKS.
- (III) The Product has been properly installed and used at all times in accordance, and in all material respects, with the applicable Product documentation.
- (IV) All Ethernet cabling runs use CAT5 (or above) shielded cabling.

Disclaimer: UBIQUITI NETWORKS does not warrant that the operation of the products is error-free or that operation will be uninterrupted. In no event shall UBIQUITI NETWORKS be responsible for damages or claims of any nature or description relating to system performance, including coverage, buyer's selection of products for buyer's application and/or failure of products to meet government or regulatory requirements.

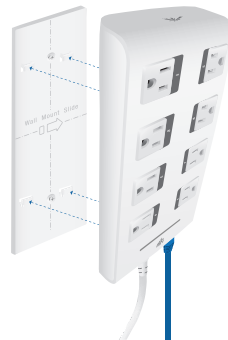
### Returns

In the unlikely event a defect occurs, please work through the dealer or distributor from which this product was purchased.

2. Use a 6 mm drill bit to drill the holes.
3. Insert the anchors into the holes and use a Phillips screwdriver to secure *Screws* through the *Mounting Plate* into the *Anchors*.



4. Align the back of the mPower PRO with the *Mounting Plate*. Slide the mPower PRO to the right to lock it into place.





## Software Download and Installation

For local mFi Controller installations, the mFi Controller software is installed just once when you initially create a mFi network. It is not necessary to go through the software installation process every time you add another mFi device.



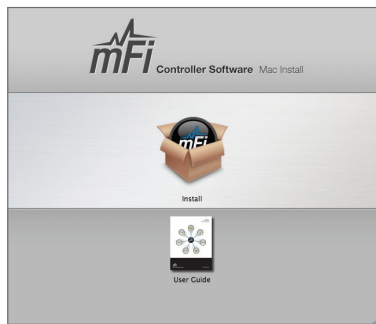
**Note:** If you are using the cloud, there is no need to install the mFi Controller software locally. Skip to *Accessing the Configuration Portal* on page 13.

The mFi Controller software can be downloaded from the Ubiquiti Networks website.

1. Go to [downloads.ubnt.com/mfi](https://downloads.ubnt.com/mfi)
2. Mac users should download **mFi.dmg** and Windows users should download **mFi-installer.exe**.
3. Follow the instructions for your computer type.

### Mac Users

1. Click the **Install** icon.



## General Warranty

UBIQUITI NETWORKS, Inc (“UBIQUITI NETWORKS”) represents and warrants that the Products furnished hereunder shall be free from defects in material and workmanship for a period of one (1) year from the date of shipment by UBIQUITI NETWORKS under normal use and operation. UBIQUITI NETWORKS sole and exclusive obligation under the foregoing warranty shall be to repair or replace, at its option, any defective Product that fails during the warranty period. The expense of removal and reinstallation of any item is not included in this warranty.

The foregoing warranty is exclusive and in lieu of all other warranties, express or implied, including the implied warranties of merchantability and fitness for a particular purpose and any warranties arising from a course of dealing, usage or trade practice with respect to the products. Repair or replacement in the manner provided herein shall be the sole and exclusive remedy of Buyer for breach of warranty and shall constitute fulfillment of all liabilities of UBIQUITI NETWORKS with respect to the quality and performance of the Products. UBIQUITI NETWORKS reserves the right to inspect all defective Products (which must be returned by Buyer to UBIQUITI NETWORKS factory freight prepaid).

No Products will be accepted for replacement or repair without obtaining a Return Materials Authorization (RMA) number from UBIQUITI NETWORKS. Products returned without an RMA number will not be processed and will be returned to Buyer freight collect. UBIQUITI NETWORKS shall have no obligation to make repairs or replacement necessitated by catastrophe, fault, negligence, misuse, abuse, or accident by Buyer, Buyer’s customers or any other parties. The warranty period of any repaired or replaced Product shall not extend beyond its original term.

EXCEPT FOR ANY EXPRESS WARRANTIES PROVIDED HEREIN, UBIQUITI NETWORKS’ PRODUCTS AND SERVICES ARE PROVIDED “AS IS” WITHOUT WARRANTY OR CONDITION OF ANY KIND, EITHER EXPRESS OR IMPLIED. UBIQUITI NETWORKS, ITS AFFILIATES, AND ITS AND THEIR THIRD PARTY DATA, SERVICE, SOFTWARE AND HARDWARE PROVIDERS HEREBY DISCLAIM AND MAKE NO OTHER REPRESENTATION OR WARRANTY OF ANY KIND, EXPRESS, IMPLIED OR STATUTORY, INCLUDING BUT NOT LIMITED TO REPRESENTATIONS, GUARANTEES, OR WARRANTIES OF MERCHANTABILITY, ACCURACY, QUALITY OF SERVICE OR RESULTS, AVAILABILITY, SATISFACTORY

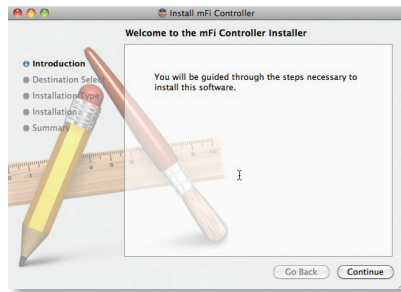




## Specifications

mPower PRO	
Dimensions	250.37 x 116.7 x 42 mm
Weight	754.4 g
Mounting	Wall (Kit Included)
Power	110-125VAC, 50-60 Hz, 15 A Per Outlet, 15 A Total
Outlets	8
Networking Interface	(1) 10/100 Ethernet Port
Wi-Fi Standards	802.11b/g/n
Memory	16 MB RAM, 8 MB Flash
LEDs	1 LED (Status)
Operating Temperature	0 to 40° C
Humidity	95% RH Max.

- Click **Continue** and follow the on-screen instructions to install the software.



- Go to **Go > Applications** and double-click the **mFi** icon.

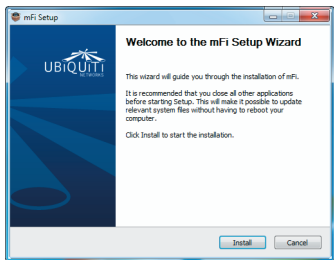


Proceed to *Configuring the mFi Controller Software* on page 10.

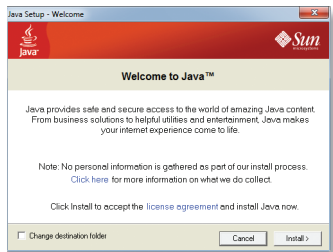


## PC Users

1. Launch **mFi-installer.exe**.
2. Click **Install**.




3. If your computer doesn't have Java 1.6 or above installed, you will be prompted to install it. Click **Install** to continue.



**Wireless Settings** To use the mPower PRO on a Wi-Fi network, configure the *Wireless Settings*:

- a. Click **Scan** for a list of available SSIDs and select the appropriate SSID or type in the name manually in the *SSID* field.
- b. Select the appropriate *Security and Authentication* settings for your network.
- c. Enter your network key.

After you've entered the necessary settings, click **Change**. You will be asked to apply the changes; click **Apply**.

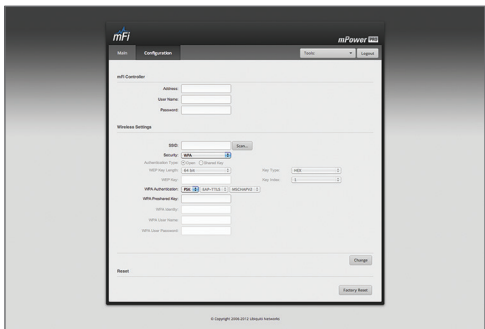
4. Log in to the mFi Controller.
5. The mPower PRO appears with the mPower  icon in the left panel under the *Drag on to Map* heading. Once you've customized your map, you can position the mPower PRO in the appropriate location.



For additional details on the mFi Controller software, refer to the User Guide on our website at [www.ubnt.com/mfi](http://www.ubnt.com/mfi)



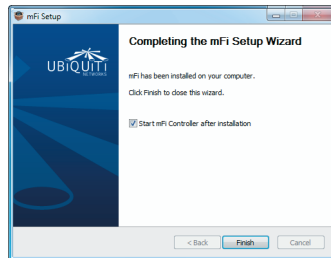
3. Enter your configuration information on the *Configuration* tab:



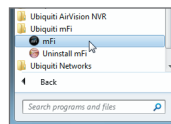
**mFi Controller** Enter the mFi Controller settings:

- a. Enter the mFi Controller address.
  - For local mFi Controller installations, this is the IP address and http port used by the Controller. (The port is usually 6080, for example: *192.168.25.161:6080* or *mfi.acme.com:6080*)
  - For cloud users, this is *mfi.ubnt.com*
- b. Enter the User Name and Password.
  - For local mFi Controller installations, this is the admin name and password defined during the mFi Configuration Wizard.
  - For cloud users, this is the username and password that you registered at *mfi.ubnt.com*

4. Ensure the *Start mFi Controller after installation* option is checked and click **Finish**.



**Note:** The mFi Controller software can also be launched from **Start > All Programs**.



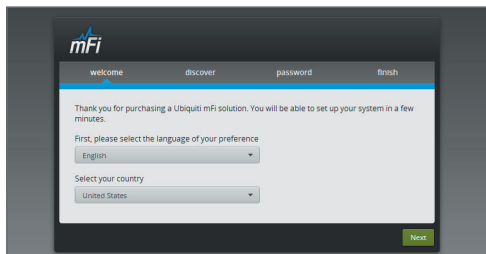


## Configuring the mFi Controller Software

1. The mFi Controller software startup will begin. Click **Launch a Browser to Manage the Network.**



2. The *mFi Configuration Wizard* will appear the first time you launch the mFi Controller software. On the *Welcome* screen, select your language and country. Click **Next**.

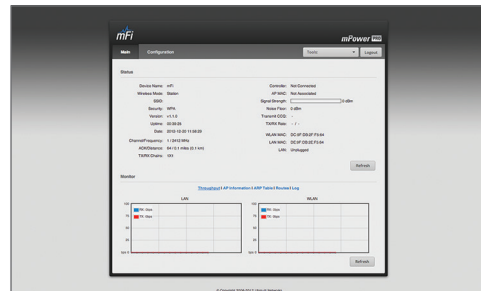


## Configuration Portal Interface Settings

1. The login screen will appear. Enter **ubnt** in the *Username* and *Password* fields.



2. The *Main* tab of the *Configuration Portal* will appear. Click the **Configuration** tab.

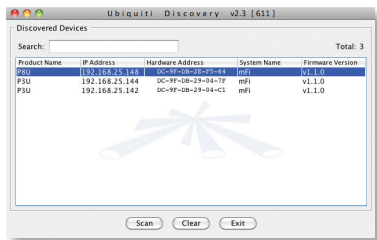




### Configuration Portal via LAN with DHCP

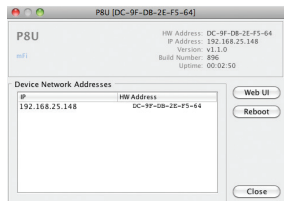
If it is not already installed, download the Ubiquiti Device Discovery Tool (v2.3) at [www.ubnt.com/download#app](http://www.ubnt.com/download#app)

1. Launch the *Ubiquiti Device Discovery Tool*.
2. A list of Ubiquiti devices on the network will appear. Locate the appropriate device (named P8U) under *Product Name* and double-click it.



**Note:** If you have more than one of the same device model, you can determine which one you are selecting by checking the Hardware (MAC) Address on the device label.

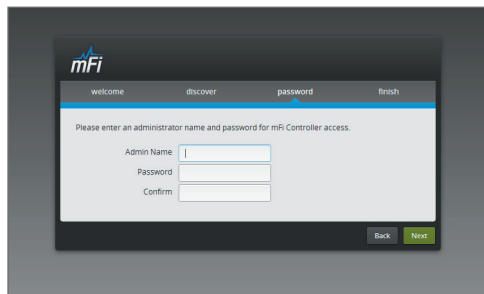
3. Click **WEB UI** on the right.



3. Select the device(s) that you want to configure. The **Refresh** button can be used to refresh the list of devices. Click **Next** to continue.

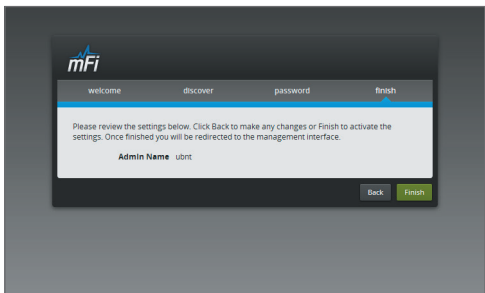


4. Enter an administrator name in the *Admin Name* field. Enter a password in the *Password* and *Confirm* fields. Click **Next**.

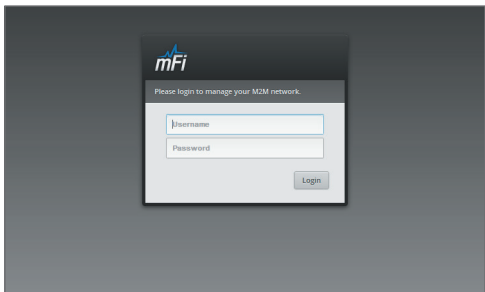




5. Click **Finish** to confirm your settings.



6. A login screen will appear for the mFi Controller management interface. Enter the *Admin Name* and *Password* that you created and click **Login**.



## Accessing the Configuration Portal

You need to connect to the Configuration Portal to configure any of the following:

- Cloud access
- Access to local mFi Controller on a different IP network.
- Wireless network access (Wi-Fi settings)



**Note:** If you are not using these configurations, you do not need to access the Configuration Portal.

The Configuration Portal can be accessed in two ways:

- Connect an Ethernet cable directly from your computer to the *Ethernet Port* on the mPower PRO and configure your computer with a static IP address.
- Connect an Ethernet cable from your DHCP-enabled LAN to the *Ethernet Port* on the mPower PRO.

## Configuration Portal via Ethernet to Computer

1. Make sure that your computer is directly connected via Ethernet to the *Ethernet Port* on the mPower PRO.
2. Configure the Ethernet adapter on your computer with a static IP address on the 192.168.1.x subnet.
3. Launch your web browser and type **http://192.168.1.20** in the address field. Press **enter** (PC) or **return** (Mac).



4. Go to *Configuration Portal Interface Settings* on page 15.