



*mFi Power Strip*

Model: mPower

QUICK START GUIDE



## Introduction

Thank you for purchasing the Ubiquiti mFi™ mPower™. The mPower is a power strip with Wi-Fi capability that is designed for use with the Ubiquiti mFi platform. Once connected, you can use the mFi Controller software to define rules using your web browser. Rules detail what actions occur when trigger conditions are met.

## Package Contents



mPower

Mounting  
PlateScrews  
(Qty. 2)Anchors  
(Qty. 2)

Quick Start Guide

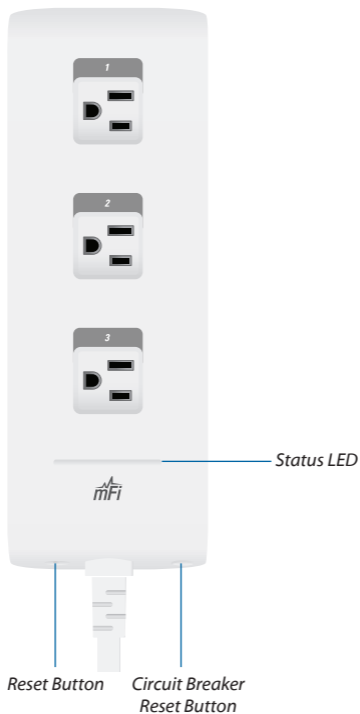


CD-ROM

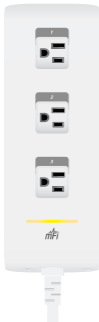
## System Requirements

- Wi-Fi Network
- Drill with 6 mm Drill Bit (Optional for Wall-Mount)
- Phillips Screwdriver

## Hardware Overview



**Status LED** The *Status* LED has two different states:



The *Status* LED will light yellow when the mPower is first powered on in factory default mode out of the box.



The *Status* LED will light blue when the mPower has been successfully integrated into a network and is working properly.

**Reset Button** The *Reset* button serves two functions:

- **Restart** Restarts the device when you press and release it quickly.
- **Restore Factory Defaults** Press and hold until the LED alternates colors and then remains steady yellow to restore the device to the factory default settings.

**Circuit Breaker Reset Button** When excessive current triggers the circuit breaker, the entire unit will be powered off, including the LED. Press this button to reset the unit. The LED will flash briefly and the unit will power back on.

## Hardware Installation

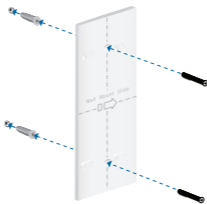
The mPower Power Strip includes an optional mounting plate.

### Wall-Mount

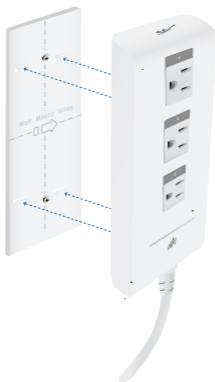
1. Position the *Mounting Plate* on the wall with the text in the proper orientation, and mark the mounting holes on the wall.



2. Use a 6 mm drill bit to drill the holes.
3. Insert the anchors into the holes and use a Phillips screwdriver to secure *Screws* through the *Mounting Plate* into the *Anchors*.



- Align the back of the mPower Power Strip with the *Mounting Plate*. Slide the Power Strip to the right to lock it into place.

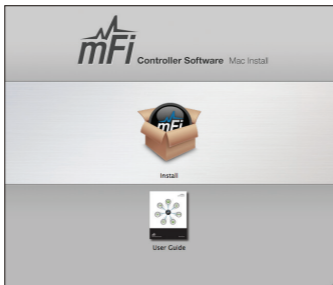


## Software Installation

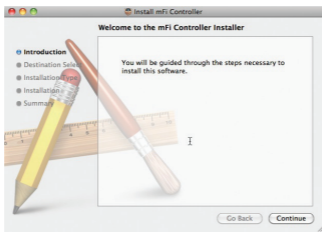
Insert the mFi Controller software CD into your CD-ROM drive and follow the instructions for your specific computer type.

### Mac Users

1. Click the **Install** icon.

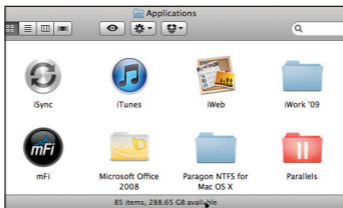


2. Click **Continue** and follow the on-screen instructions to install the software.





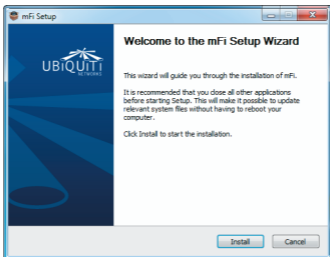
3. Go to **Go > Applications** and double-click the **mFi** icon.



Proceed to *Configuring the mFi Controller Software* on page 9.

## PC Users

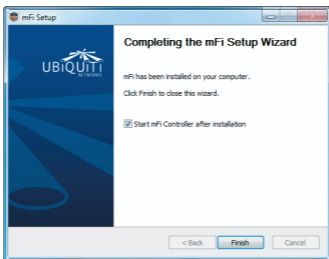
1. Launch **mFi-installer.exe**.
2. Click **Install**.



3. If your computer doesn't have Java 1.6 or above installed, you will be prompted to install it. Click **Install** to continue.

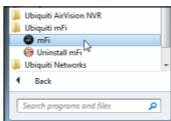


4. Ensure the *Start mFi Controller after installation* option is checked and click **Finish**.





**Note:** The mFi Controller software can also be launched from **Start > All Programs**.

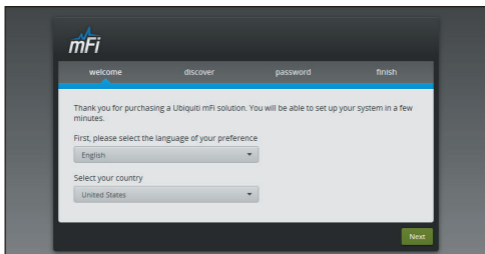


## Configuring the mFi Controller Software

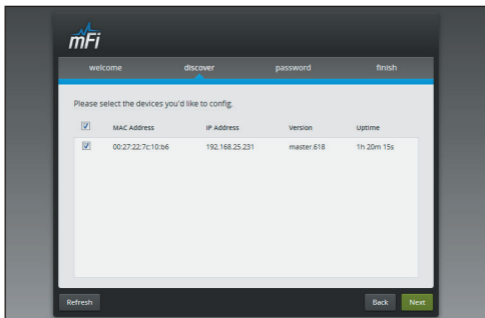
1. The mFi Controller software startup will begin. Click **Launch a Browser to Manage the Network**.



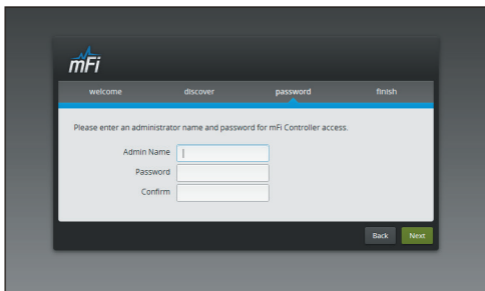
2. The *mFi Configuration Wizard* will appear the first time you launch the mFi Controller software. On the *Welcome* screen, select your language and country. Click **Next**.



3. Select the device(s) that you want to configure. The *Refresh* button can be used to refresh the list of devices. Click **Next** to continue.

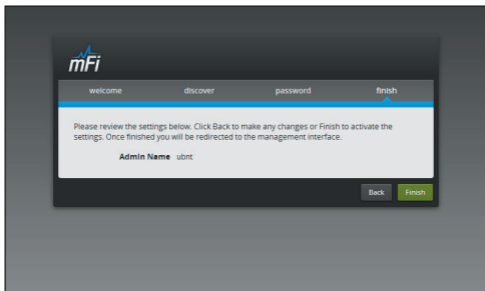


4. Enter an administrator name in the *Admin Name* field. Enter a password in the *Password* and *Confirm* fields. Click **Next**.



The screenshot shows the mFi installation wizard interface. At the top left is the mFi logo. A navigation bar contains four steps: 'welcome', 'discover', 'password', and 'finish'. The 'password' step is currently active, indicated by a blue underline and a small blue arrow pointing to it. Below the navigation bar, the text reads: 'Please enter an administrator name and password for mFi Controller access.' There are three input fields: 'Admin Name' (with a cursor), 'Password', and 'Confirm'. At the bottom right, there are two buttons: 'Back' (grey) and 'Next' (green).

5. Click **Finish** to confirm your settings.



The screenshot shows the mFi installation wizard interface at the 'finish' step. The navigation bar at the top has 'welcome', 'discover', 'password', and 'finish'. The 'finish' step is now active, indicated by a blue underline and a small blue arrow pointing to it. Below the navigation bar, the text reads: 'Please review the settings below. Click Back to make any changes or Finish to activate the settings. Once finished you will be redirected to the management interface.' Below this text, the text 'Admin Name' is followed by the value 'ubnt'. At the bottom right, there are two buttons: 'Back' (grey) and 'Finish' (green).



6. A login screen will appear for the mFi Controller management interface. Enter the *Admin Name* and *Password* that you created and click **Login**.





## Configuring the mPower via Wi-Fi

To configure the mPower device, you must access it via Wi-Fi from a computer. The mPower device has a default SSID (wireless network name) labeled *mFi* followed by the last six characters of the MAC address.

### Windows

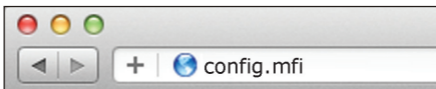
1. Go to **Connect to Network**.
  - **Windows 7** Right-click the *Network*  icon.
  - **Windows Vista** Go to **Start > Connect To**.
  - **Windows XP** Right-click the *Wireless Network*  icon in the *System Tray* (lower right corner of the screen). Click **View Available Wireless Networks**.
2. Select the wireless network (SSID) that begins with *mFi* and then click **Connect**. Go to *Accessing the Configuration Portal* on page 13.

## Mac

1. Click the *AirPort*  icon in the menu bar (top left side of the screen).
2. Select the wireless network (SSID) that begins with *mFi*. Once connected, the *AirPort*  icon will change from gray to solid black.

## Accessing the Configuration Portal

1. Launch your web browser. Type **config.mfi** in the address field. Press **enter** (PC) or **return** (Mac).



2. The *Configuration Portal* will appear. Select the wireless network name (SSID) of your existing wireless network from the drop-down list. To refresh the list, click *rescan*.



### 3. Enter your network information:




- Enter your Wi-Fi security credentials. The options that appear are based on the encryption method used on your Wi-Fi network.
- Enter the mFi Controller address.
- Enter the User Name.
- Enter the Password.
- Click **Save Settings**.



4. A screen will appear with information about checking the device for connection status. Verify the *Status* LED is blue. It may take a few moments.



5. Reconnect to your existing wireless network by selecting the SSID from your wireless network utility.
6. The mPower device appears with the mPower  icon in the left panel under the *Drag on to Map* heading. Once you've customized your map, you can position the mPower device in the appropriate location.



Refer to the User Guide on the CD-ROM for additional details about the mFi Controller software.

The User Guide can also be downloaded from our website at [www.ubnt.com/mfi](http://www.ubnt.com/mfi)

## Specifications

mPower	
Dimensions	9.5 x 4.375 x 1.625 mm
Weight	790 g
Mounting	Wall (Kit Included)
Power	125VAC, 50~60 Hz , 15 Amps Per Outlet, 15 Amps Total
Outlets	3
Memory	16 MB RAM, 8 MB Flash
Wi-Fi Standards	802.11b/g/n
LEDs	1 LED (Status)
Operating Temperature	-10° to 45° C
Humidity	95% RH Max.

## General Warranty

UBIQUITI NETWORKS, Inc (“UBIQUITI NETWORKS”) represents and warrants that the Products furnished hereunder shall be free from defects in material and workmanship for a period of one (1) year from the date of shipment by UBIQUITI NETWORKS under normal use and operation. UBIQUITI NETWORKS sole and exclusive obligation under the foregoing warranty shall be to repair or replace, at its option, any defective Product that fails during the warranty period. The expense of removal and reinstallation of any item is not included in this warranty.

The foregoing warranty is exclusive and in lieu of all other warranties, express or implied, including the implied warranties of merchantability and fitness for a particular purpose and any warranties arising from a course of dealing, usage or trade practice with respect to the products. Repair or replacement in the manner provided herein shall be the sole and exclusive remedy of Buyer for breach of warranty and shall constitute fulfillment of all liabilities of UBIQUITI NETWORKS with respect to the quality and performance of the Products. UBIQUITI NETWORKS reserves the right to inspect all defective Products (which must be returned by Buyer to UBIQUITI NETWORKS factory freight prepaid).

No Products will be accepted for replacement or repair without obtaining a Return Materials Authorization (RMA) number from UBIQUITI NETWORKS. Products returned without an RMA number will not be processed and will be returned to Buyer freight collect. UBIQUITI NETWORKS shall have no obligation to make repairs or replacement necessitated by catastrophe, fault, negligence, misuse, abuse, or accident by Buyer, Buyer’s customers or any other parties. The warranty period of any repaired or replaced product shall not extend beyond its original term.

## Warranty Conditions

The foregoing warranty shall apply only if:

- (I) The Product has not been subjected to misuse, neglect or unusual physical, electrical or electromagnetic stress, or some other type of accident.
- (II) No modification, alteration or addition has been made to the Product by persons other than UBIQUITI NETWORKS or UBIQUITI NETWORK'S authorized representatives or otherwise approved by UBIQUITI NETWORKS.
- (III) The Product has been properly installed and used at all times in accordance, and in all material respects, with the applicable Product documentation.
- (IV) All Ethernet cabling runs use CAT5 (or above) shielded cabling.

Disclaimer: UBIQUITI NETWORKS does not warrant that the operation of the products is error-free or that operation will be uninterrupted. In no event shall UBIQUITI NETWORKS be responsible for damages or claims of any nature or description relating to system performance, including coverage, buyer's selection of products for buyer's application and/or failure of products to meet government or regulatory requirements.

## Returns

In the unlikely event a defect occurs, please work through the dealer or distributor from which this product was purchased.

## Compliance

### FCC

Changes or modifications not expressly approved by the party responsible for compliance could void the user's authority to operate the equipment.

This device complies with Part 15 of the FCC Rules. Operation is subject to the following two conditions:

1. this device may not cause harmful interference, and
2. this device must accept any interference received, including interference that may cause undesired operation.

NOTE: This equipment has been tested and found to comply with the limits for a Class B digital device, pursuant to part 15 of the FCC Rules. These limits are designed to provide reasonable protection against harmful interference in a residential installation. This equipment generates, uses and can radiate radio frequency energy and, if not installed and used in accordance with the instructions, may cause harmful interference to radio communications. However, there is no guarantee that interference will not occur in a particular installation. If this equipment does cause harmful interference to radio or television reception, which can be determined by turning the equipment off and on, the user is encouraged to try to correct the interference by one or more of the following measures:

- Reorient or relocate the receiving antenna.
- Increase the separation between the equipment and receiver.
- Connect the equipment into an outlet on a circuit different from that to which the receiver is connected.
- Consult the dealer or an experienced radio/TV technician for help.

For MPE and antenna usage details, please visit our website at [www.ubnt.com/compliance](http://www.ubnt.com/compliance)

## Industry Canada

This Class B digital apparatus complies with Canadian ICES-003.

To reduce potential radio interference to other users, the antenna type and its gain should be so chosen that the equivalent isotropically radiated power (EIRP) is not more than that permitted for successful communication.

This device complies with Industry Canada licence-exempt RSS standard(s). Operation is subject to the following two conditions:

1. This device may not cause interference, and
2. This device must accept any interference, including interference that may cause undesired operation of the device.

Cet appareil numérique de la classe B est conforme à la norme NMB-003 du Canada.

Pour réduire le risque d'interférence aux autres utilisateurs, le type d'antenne et son gain doivent être choisis de façon que la puissance isotrope rayonnée équivalente (PIRE) ne dépasse pas ce qui est nécessaire pour une communication réussie.

Cet appareil est conforme à la norme RSS Industrie Canada exempts de licence norme(s). Son fonctionnement est soumis aux deux conditions suivantes:

1. cet appareil ne peut pas provoquer d'interférences et
2. cet appareil doit accepter toute interférence, y compris les interférences qui peuvent causer un mauvais fonctionnement du dispositif.

## RF Exposure Warning

The transceiver described here emits radio frequency energy. Although the power level is low, the concentrated energy from a directional antenna may pose a health hazard. Do not allow people to come closer than 20 cm to the antenna when the transmitter is operating.

Additional information on RF exposure is available on the Internet at **[www.fcc.gov/oet/info/documents/bulletins](http://www.fcc.gov/oet/info/documents/bulletins)**

L'émetteur-récepteur décrit ici émet de l'énergie de fréquence radio. Bien que le niveau de puissance est faible, l'énergie concentrée à partir d'une antenne directionnelle peut présenter un danger pour la santé. Ne pas permettre aux gens de se rapprocher de 20 cm à l'antenne lorsque l'émetteur est en marche.

Des renseignements supplémentaires sur l'exposition aux RF est disponible sur Internet à **[www.fcc.gov/oet/info documents/bulletins](http://www.fcc.gov/oet/info documents/bulletins)**

## CE Marking

CE marking on this product represents the product is in compliance with all directives that are applicable to it.

## Alert Sign (!) Follows CE Marking

Alert sign must be indicated if a restriction on use applied to the product and it must follow the CE marking.



## Declaration of Conformity

**Česky [Czech]** UBIQUITI NETWORKS tímto prohlašuje, e tento UBIQUITI NETWORKS device, je ve shodě se základními požadavky a dalšími podmínkami ustanovenými směrnicí 1999/5/ES.

**Dansk [Danish]** Undertegnede UBIQUITI NETWORKS erklærer herved, at følgende udstyr UBIQUITI NETWORKS device, overholder de væsentlige krav og øvrige relevante krav i direktiv 1999/5/EF.

**Nederlands [Dutch]** Hierbij verklaart UBIQUITI NETWORKS dat het toestel UBIQUITI NETWORKS device, in overeenstemming is met de essentiële eisen en de andere relevante bepalingen van richtlijn 1999/5/EG.

Bij deze verklaart UBIQUITI NETWORKS dat deze UBIQUITI NETWORKS device, voldoet aan de essentiële eisen en aan de overige relevante bepalingen van Richtlijn 1999/5/EC.

**English** Hereby, UBIQUITI NETWORKS, declares that this UBIQUITI NETWORKS device, is in compliance with the essential requirements and other relevant provisions of Directive 1999/5/EC.

**Eesti [Estonian]** Käesolevaga kinnitab UBIQUITI NETWORKS seadme UBIQUITI NETWORKS device, vastavust direktiivi 1999/5/EÜ põhinõuetele ja nimetatud direktiivist tulenevatele teistele asjakohastele sätetele.

**Suomi [Finnish]** UBIQUITI NETWORKS vakuuttaa täten että UBIQUITI NETWORKS device, tyyppinen laite on direktiivin 1999/5/EY oleellisten vaatimusten ja sitä koskevien direktiivin muiden ehtojen mukainen.

**Français [French]** Par la présente UBIQUITI NETWORKS déclare que l'appareil UBIQUITI NETWORKS, device est conforme aux exigences essentielles et aux autres dispositions pertinentes de la directive 1999/5/CE.

**Deutsch [German]** Hiermit erklärt UBIQUITI NETWORKS, dass sich diese UBIQUITI NETWORKS device, in Übereinstimmung mit den grundlegenden Anforderungen und den anderen relevanten Vorschriften der Richtlinie 1999/5/EG befindet". (BMW i)

**Ελληνική [Greek]** ΜΕ ΤΗΝ ΠΑΡΟΥΣΑ UBIQUITI NETWORKS ΔΗΛΩΝΕΙ ΟΤΙ UBIQUITI NETWORKS device, ΣΥΜΜΟΡΦΩΝΕΤΑΙ ΠΡΟΣ ΤΙΣ ΟΥΣΙΩΔΕΙΣ ΑΠΑΙΤΗΣΕΙΣ ΚΑΙ ΤΙΣ ΛΟΙΠΕΣ ΣΧΕΤΙΚΕΣ ΔΙΑΤΑΞΕΙΣ ΤΗΣ ΟΔΗΓΙΑΣ 1995/5/EK.

**Magyar [Hungarian]** Alulírott, UBIQUITI NETWORKS nyilatkozom, hogy a UBIQUITI NETWORKS device, megfelel a vonatkozó alapvető követelményeknek és az 1999/5/EC irányelv egyéb előírásainak.

**Íslenska [Icelandic]** Hér me l sir UBIQUITI NETWORKS yfir ví a UBIQUITI NETWORKS device, er í samræmi við grunnkröfur og a rar kröfur, sem ger ar eru í tilskipun 1999/5/EC.



**Italiano [Italian]** Con la presente UBIQUITI NETWORKS dichiara che questo UBIQUITI NETWORKS device, è conforme ai requisiti essenziali ed alle altre disposizioni pertinenti stabilite dalla direttiva 1999/5/CE.

**Latviski [Latvian]** Ar o UBIQUITI NETWORKS deklar , ka UBIQUITI NETWORKS device, atbilst Direkt vas 1999/5/EK b tiskaj m pras b m un citiem ar to saist tajiem noteikumiem.

**Lietuviškai [Lithuanian]** UBIQUITI NETWORKS deklaruoja, kad šis UBIQUITI NETWORKS įrenginys atitinka esminius reikalavimus ir kitas 1999/5/EB Direktyvos nuostatas.

**Malti [Maltese]** Hawnhekk, UBIQUITI NETWORKS, jiddikjara li dan UBIQUITI NETWORKS device, jikkonforma mal- ti ijiet essenzjali u ma provvedimenti o rajn relevanti li hemm fid-Direttiva 1999/5/EC.

**Norsk [Norwegian]** UBIQUITI NETWORKS erklærer herved at utstyret UBIQUITI NETWORKS device, er i samsvar med de grunnleggende krav og øvrige relevante krav i direktiv 1999/5/EF.

**Slovensky [Slovak]** UBIQUITI NETWORKS t mto vyhlasuje, e UBIQUITI NETWORKS device, sp a základné po iadavky a v etky príslu né ustanovenia Smernice 1999/5/ES.

**Svenska [Swedish]** Härmed intygar UBIQUITI NETWORKS att denna UBIQUITI NETWORKS device, står i överensstämmelse med de väsentliga egenskapskrav och övriga relevanta bestämmelser som framgår av direktiv 1999/5/EG.

**Español [Spanish]** Por medio de la presente UBIQUITI NETWORKS declara que el UBIQUITI NETWORKS device, cumple con los requisitos esenciales y cualesquiera otras disposiciones aplicables o exigibles de la Directiva 1999/5/CE.

**Polski [Polish]** Niniejszym, firma UBIQUITI NETWORKS o wiadcza, e produkt serii UBIQUITI NETWORKS device, spełnia zasadnicze wymagania i inne istotne postanowienia Dyrektywy 1999/5/EC.

**Português [Portuguese]** UBIQUITI NETWORKS declara que este UBIQUITI NETWORKS device, está conforme com os requisitos essenciais e outras disposições da Directiva 1999/5/CE.

**Română [Romanian]** Prin prezenta, UBIQUITI NETWORKS declară că acest dispozitiv UBIQUITI NETWORKS este în conformitate cu cerințele esențiale și alte prevederi relevante ale Directivei 1999/5/CE.

## mFi Products

Ubiquiti Networks offers a variety of products for the mFi platform. For additional details, visit [www.ubnt.com/mfi](http://www.ubnt.com/mfi)



Ceiling Mount  
Motion Sensor  
*mFi-MSC*



Wall Mount  
Motion Sensor  
*mFi-MSW*



Temperature  
Sensor  
*mFi-THS*



Current Sensor  
*mFi-CS*



Door Sensor  
*mFi-DS*



Thermostat  
*Coming Soon!*



mPort  
*mPort*



mPort Serial  
*mPort-S*



Power Adapter  
*mPower Mini*



Power Strip  
*mPower Pro*



## Ubiquiti Networks Support

Email: **[support@ubnt.com](mailto:support@ubnt.com)**

Phone (9 a.m. - 5 p.m. PST): **408-942-1153**

## Online Resources

Wiki Page: **[wiki.ubnt.com](http://wiki.ubnt.com)**

Support Forum: **[forum.ubnt.com](http://forum.ubnt.com)**

Downloads: **[downloads.ubnt.com](http://downloads.ubnt.com)**

