

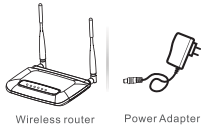


WF2415 300Mbps Gigabit Wireless-N AP/ Repeater/ Router Client

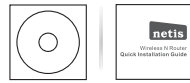
Quick Installation Guide

Package Contents

*This QIG is shared by netis wireless router.



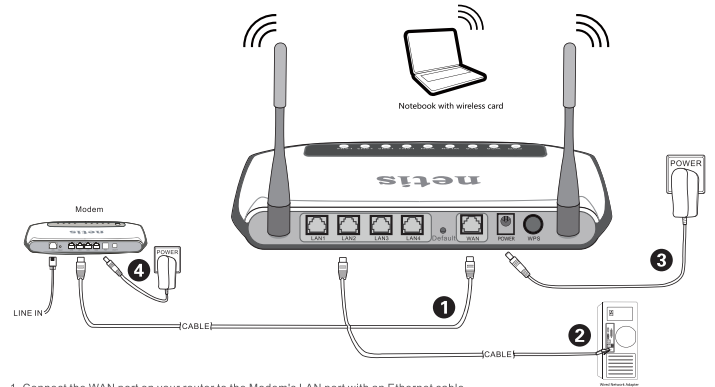
Wireless router Power Adapter



Resource CD QIG

System Requirement
• Windows 7 • Windows Vista • Windows XP • Windows 2000

1. Hardware Connection

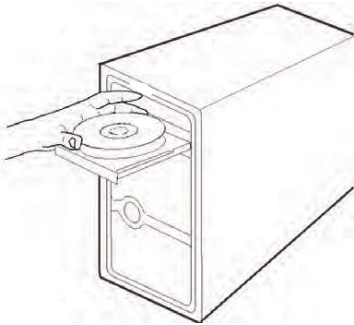


1. Connect the WAN port on your router to the Modem's LAN port with an Ethernet cable
2. Connect your computer to any LAN port on netis router with an Ethernet cable
3. Plug in the power adapter of netis router
4. Unplug your ADSL or Cable Modem power at least 15 seconds and plug it back in

2. Connecting by Easy Setup Assistant

The Easy Setup Assistant is not supported in Linux or Mac OS. If you are running without CD-ROM, Please refer to Appendix 1.

1 Insert the netis resource CD into the CD-ROM drive.



2 Here will coming up the Welcome page



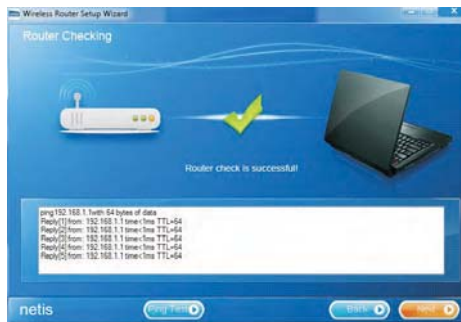
3 After confirming the hardware connection and the status of LEDs, Click **NEXT** to continue.



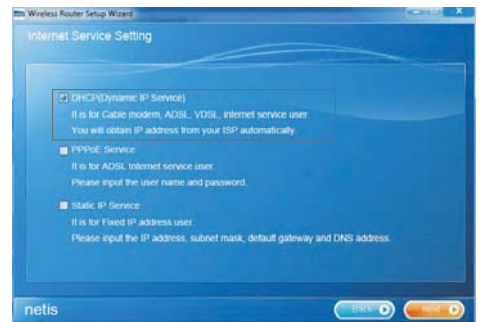
4 Please unplug your ADSL or Cable Modem power adapter for at least 15 seconds then plug it back in. if you had already done this step on the hardware connection , then just click **NEXT** to continue



5 After the connectivity is checked successfully, please click **NEXT**.



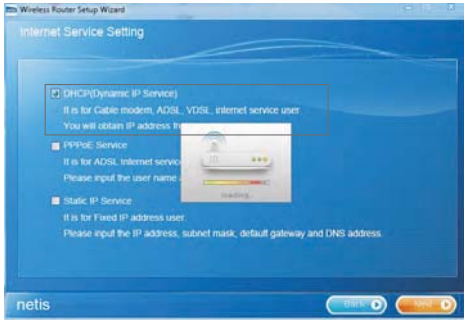
6 Select the connection type your ISP provides and click **NEXT**. Here we take DHCP connection for example.



(Turn over)

2.Connecting by Easy Setup Assistant (continued)

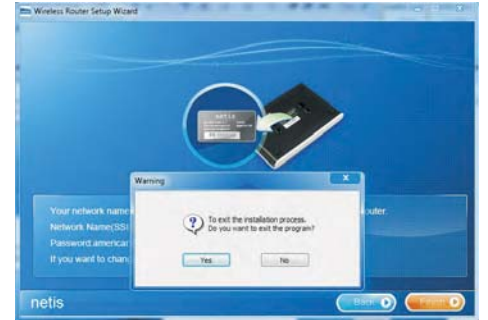
7 Click NEXT and the router will automatically load the config.



8 Congratulations! You are online . If you wanna set the Repeater and WiFi.You can click NEXT



9 After this page appear , click NO to the Advance Tool



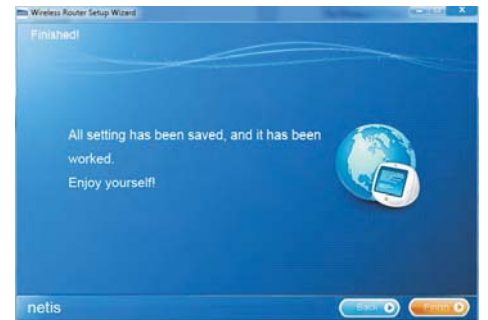
10 Here we take Network Name&Security for example



11 After simply click this icon You will guide to this page. You also can follow our default setting and click NEXT. And we recommend you set your personal SSID and Password.



12 Great. The router is been successfully setting and encryption. Then click Finish to close the wizard



You can also Set the Repeater setting by advance tool.

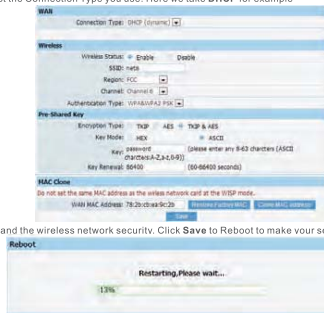
You can enter 192.168.1.1 from your browser to use WEB management interface for more advanced settings.

Appendix 1: Connecting by WEB Management Interface

You can go to WEB management interface to configure your Router.

- 1) Set the IP address of your wired network adapter as **Automatically**.
For Windows 7/Vista
 Go to **Start > Settings > Control Panel**. Click **View network status and tasks > View status > Properties** and double-click **Local Area Connection**, select **Properties** and then double-click **Internet Protocol Version 4 (TCP/IPv4)**. Select **Obtain an IP address automatically**, choose **Obtain DNS server address automatically** and click **OK**.
For Windows XP/2000
 Go to **Start > Control Panel**. Click **Network and Internet Connections > Network Connections**. Right-click **Local Area Connection**, select **Properties** and then double-click **Internet Protocol (TCP/IP)**. Select **Obtain an IP address automatically**, choose **Obtain DNS server address automatically** and click **OK**.

- 2) Open your browser and type **192.168.1.1** in the address field, then you can automatically login the UI
- 3) Go to **Quick Setup** and click **Next**. Select the **Connection Type** you use. Here we take **DHCP** for example

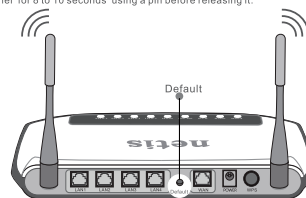


- 4) Configure your network name (SSID) and the wireless network security. Click **Save** to Reboot to make your settings effective



Appendix 2: Troubleshooting

- Q How do I restore my Router's configuration to its factory default settings?
 A With the Router powered on, press and hold the **Default** button on the rear panel for 8 to 10 seconds, using a pin before releasing it.



You can refer to our User manual on the CD to set up more functions of the Router.

What can I do if I cannot access the Internet?

- 1) Check to see if all the connectors are connected well, including the telephone line (for your modem), Ethernet cables and power adapter.
- 2) Check to see if you can access the Router's web management page. If you can, please follow the following steps to solve the problem. If you can't, please refer to **Appendix 1**.
- 3) Make sure that you are connected to the netis Router with the computer that was originally connected to your modem, then log on to the web-based management page and browse to **'Network > MAC Clone'**, click **Clone MAC Address** and then click **'Save'**. Reboot the Router



FCC Statement
 This equipment has been tested and found to comply with the limits for a Class B digital device, pursuant to part 15 of the FCC Rules. These limits are designed to provide reasonable protection against harmful interference in a residential installation. This equipment generates, uses and can radiate radio frequency energy and, if not installed and used in accordance with the instructions, may cause harmful interference to radio communications. However, there is no guarantee that interference will not occur in a particular installation. This equipment does cause harmful interference to radio communications, which can be determined by turning the equipment off and on; the user is encouraged to try to correct the interference by one or more of the following measures:
 —Reorient or relocate the receiving antenna.
 —Increase the separation between the equipment and receiver.
 —Connect the equipment into an outlet on a circuit different from that to which the receiver is connected.
 —Consult the dealer or an experienced radio/TV technician for help.
 Radiation Exposure Statement: This device complies with FCC radiation exposure limits set forth for an uncontrolled environment and is safe to operate with Part 15 of the FCC RF Rules. This transmitter must not be co-located or operating in conjunction with any other antenna or transmitter. This equipment should be located and operated with a minimum distance of 20 centimeters between the radiator and your body.
 This equipment complies with Part 15 of the FCC Rules. Operation is subject to the following conditions:
 (1) This device may not cause harmful interference, and
 (2) This device must accept any interference received, including interference that may cause undesired operation.

Caution!
 The manufacturer is not responsible for any radio or TV interference caused by unauthorized modifications to this equipment. Such modifications could void the user authority to operate this equipment. Operation is in FCC ISM band for indoor use only.

USA/Canada Technical Support:
 Phone 1: (toll free in USA & Canada) 1-866-711-netis or 1-866-716-3858
 Email: usk_support@netis-systems.com for North America only
 netis SYSTEMS CO.,LTD.
 http://www.netis-systems.com
 wcc@ccw.com