

LINKSYS® by Cisco



USER GUIDE

Wireless-N Day/Night Internet Home Monitoring Camera

Model: WVC100N

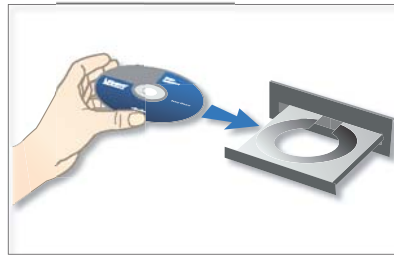


Package Contents

- Wireless-N Day/Night Internet Home Monitoring Camera
- Camera Stand/Wallmount
- Setup software and user guide on CD-ROM
- Quick installation guide
- Network cable
- Power adapter

Installation

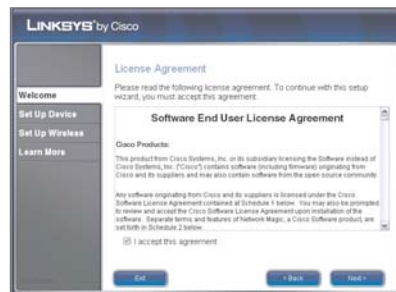
- A. Insert the Setup CD-ROM into your CD-ROM drive.



- B. Click **Start Setup**, then click **Next**.



- C. Select **I accept this agreement**, then click **Next**.



- D. Please wait while the Wizard identifies the devices on your network. When it has finished, click **Next**.



- E. Follow the on-screen instructions to connect the Camera.



- F. Please wait while the Wizard searches for the Camera.



- G. Enter a username and password for the Camera. They must each be between 1-64 characters long and may only contain letters, numbers, or the underscore (_) character. When you have finished, click **Next**.



- H. Choose a descriptive name for your camera and enter it in the *Friendly Name* field.

If you would like to save the Camera's settings to a text file on your desktop, select **Save settings to your desktop**.

Click **Next**.



- I. Please wait while the Wizard configures your settings.



- J. The Wizard now guides you through the wireless setup. Click **Next**.



- K. The Wizard searches for available wireless networks. When it has finished, select your wireless network and click **Next**. Go to step M.

If your network is not shown, select **My Network is not in this list** and click **Next**. Go to step L.



- L. Enter your network's SSID, Authentication Type, Encryption Type and Security Key, then click **Next**.

If you do not have a wireless network, select **I don't have a wireless network**. Go to step N.



- M. If your network uses wireless security, the *Enter Wireless Network Security Key* screen appears. Enter your password in the *Security Key* field and click **Next**.

If your network does not use wireless security, go to step N.

- N. Please wait while the Wizard configures your network.

- O. The Wizard now guides you through the rest of the wireless setup. Click **Next**.

- P. Follow the on-screen instructions to disconnect the cables from the Camera.



- Q.** Please wait while the Wizard configures the Camera.



Congratulations! The Camera installation is complete.

Remote Access Setup

Using the TZO DDNS Service, you can access the Camera from anywhere on the Internet by using the Camera's domain name. To set up remote access, follow these instructions.

- A.** Open your browser and go to www.tzo.com/linksys.

Select **Linksys Camera**, then click **Next**.



- B.** Select **Yes, my device is a Linksys Wireless-G Internet Home Monitoring Camera**, then click **Next**.



- C. Select **I would like to try TZO Dynamic DNS for 1 Year for FREE!**, then click **Next**.



- D. Locate the sticker on the bottom of the Camera. The number printed on the sticker is the Camera's MAC Address.

Enter the MAC Address of the Camera in the *Your Mac Address* field, then click **Next**.



- E. Enter a memorable domain name in the *Your Domain Name* field. Then choose one of the name extensions from the drop down menu and click **Next**.



- F. Enter your email address in the *Your Email Address* field, then click **Next**.



- G. You have successfully configured your TZO DDNS account.



- H. Enter the IP address of the Camera in your browser's address bar. (The default is **192.168.1.101**)



- I. Click on the Settings button (the gear icon at upper left)



- J. Complete the *User name* and *Password* fields with the username and password you chose in step G of the Camera installation. Then click **OK**.



- K. Click the *Advanced Options* tab, then click the **Change** button in the *DDNS* section.

Select **Enable DDNS**, then complete the *Domain Name*, *E-Mail Address*, and *TZO Key* fields. Click **Submit**.



Congratulations! The Camera is configured for remote access.

Operation is subject to the following two conditions: (1) this device may not cause interference, and (2) this device must accept any interference, including interference that may cause undesired operation of the device.



NOTE: In addition to using the browser-based utility, you can also view a Camera's live video stream using various multimedia player applications. To do this, first configure the RTP/RTSP settings in the Camera's browser-based utility, then open one of the multimedia players below and enter the appropriate URL.

QuickTime or RealPlayer:

rtsp://< Camera IP Address>/img/video.sav

Windows Media Player:

http://<Camera IP Address>/img/video.asf

Mobile phone with RTSP support:

http://<Camera IP Address>/img/video.asf

This equipment has been tested and found to comply with the limits for a Class B digital device, pursuant to part 15 of the FCC rules. These limits are designed to provide reasonable protection against harmful interference in a residential installation. This equipment generates, uses and can radiate radio frequency energy and, if not installed and used in accordance with the instructions, may cause harmful interference to radio communications. However, there is no guarantee that interference will not occur in a particular installation. If this equipment does cause harmful interference to radio or television reception, which can be determined by turning the equipment off and on, the user is encouraged to try to correct the interference by one or more of the following measures:

- Reorient or relocate the receiving antenna.
- Increase the separation between the equipment and receiver.
- Connect the equipment into an outlet on a circuit different from that to which the receiver is connected.
- Consult the dealer or an experienced radio/TV technician for help.

You are cautioned that changes or modifications not expressly approved by the party responsible for compliance could void your authority to operate the equipment.

This device complies with Part 15 of the FCC Rules. Operation is subject to the following two conditions:

- (1) this device may not cause harmful interference and
- (2) this device must accept any interference received, including interference that may cause undesired operation

FCC RF Radiation Exposure Statement:

1. This Transmitter must not be co-located or operating in conjunction with any other antenna or transmitter.
2. This equipment complies with FCC RF radiation exposure limits set forth for an uncontrolled environment. This equipment should be installed and operated with a minimum distance of 20 centimeters between the radiator and your body.

For additional information or troubleshooting help, refer to the User Guide on the CD-ROM. Additional support is also available by phone or online.

24-Hour Technical Support
800-326-7114

Website
<http://www.linksysbycisco.com>

Sales Information
800-546-5797 (800-LINKSYS)

Support
<http://www.linksysbycisco.com/support>

© 2009 Cisco Systems, Inc. All rights reserved. Cisco, the Cisco logo, and Linksys are trademarks or registered trademarks of Cisco Systems, Inc. and/or its affiliates in the United States and certain other countries. All other trademarks mentioned in this document or website are the property of their respective owners. The use of the word partner does not imply a partnership relationship between Cisco and any other company.

LINKSYS® by Cisco

