



Wireless Ethernet + Modem Mini PCI Adapter

User's Guide

**Information in this document is subject to change without notice.
© 2001 Xircom, Inc. All rights reserved.**

June 2001

Xircom reserves the right to make improvements and/or changes in the products and programs described in this document at any time without notice.

The software described in this document is furnished under a license and may be used or copied only in accordance with such license.

No part of this document may be reproduced or transmitted in any form or by any means, electronic or mechanical, for any purpose, without the expressed written permission of Xircom Inc. Information in this document is subject to change without notice. Xircom Inc makes no representations or warranties with respect to the contents or use of this manual and specifically disclaims any express or implied warranties of merchantability or fitness for any particular purpose. This document is to be made available only under non-disclosure.

Some of the product names herein have been used for identification purposes only and may be trademarks of their respective companies.

Contents

SECTION 1 Hardware Installation	1
Introduction	1
Laptop System Requirements	1
Hardware Installation	2
Installing the Mini PCI Adapter	3
SECTION 2 Software Installation	5
Windows Installation	5
Windows Modem Troubleshooting	5
Modem Diagnostics Tool	6
Windows NT 4.0 Modem Setup Installation	6
SECTION 3 Configuration Utility	7
Introduction	7
Installing the Configuration Utility	8
System Tray Icon	8
Icon Menu	9
Starting the Configuration Utility	10
Configuration Menu	10
Setting the Profile	11
Setting the Mode	11
802.11 AdHoc Mode	12
Setting the SSID	12
Setting the Transmit Rate	12
Enabling Power Save Mode	13
Selecting the Ad Hoc Channel	14
Encryption Menu	14
Disabling Encryption	15
Enabling Encryption	15
Creating Encryption Keys Using a Passphrase	15
Creating Encryption Keys Manually	16
Default Key	16
Link Menu	17
About Menu	18
Appendix A Modem AT Commands	19
Introduction to Modem AT Commands	19
Special Commands	19
AT Command Reference	20
Modem S-Registers	35
Introduction to S-Registers	35
S-Register Reference	35
Modem Result Codes	41
Modem Result Codes	41

Appendix B Specifications43

Appendix C Technical Support and Warranty45

Appendix D Regulatory and Safety Notices49

SECTION 1

Hardware Installation

This section describes how to install the Wireless Ethernet and Modem Mini PCI adapter into a PC notebook.

Introduction

- Embedded Mini PCI adapter
- The Mini PCI adapter is a non-user upgradeable system board device, and not an add-in card
- Supports modem speeds up to 56Kbps using the V.90 standard
- Supports both 10Mbps and 100Mbps Ethernet networks
- V.90 modem is upgradeable to the V.92 specification
- Plugs directly into a connector directly on the PC motherboard

Laptop System Requirements

- Up to 2 laptop internal antennas
- AC97 Soft Modem (requires AC97 compliant Mini PCI socket)
- Operating Systems: Windows 98SE/2000/Me/NT4.0

Hardware Installation

The Mini PCI adapter is installed in the PC by connecting the 124-pin card edge connector to the mating connector on the PC system board.



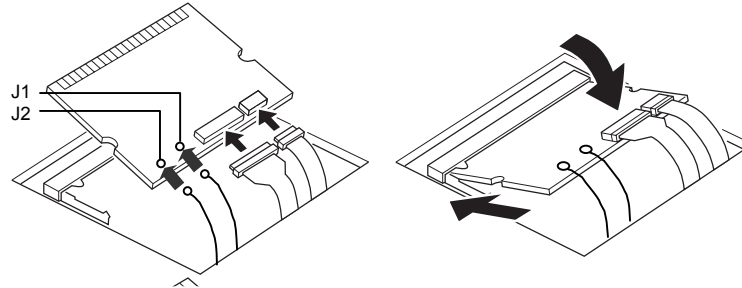
Service should only be performed by a qualified technician.

To reduce the risk of damage to the adapter or the PC, the following precautions must be observed when installing the adapter:

- ❑ Installation should only be performed in an Electrostatic Discharge (ESD) controlled environment. All personnel must wear a properly grounded wrist strap and an anti-static smock while handling the card.
- ❑ The work area should be free of prime static generators such as Styrofoam, Styrofoam cups, styrene containers, any unauthorized plastic tapes or labels, any plastic items (pens, file folders, etc.) and any synthetic or vinyl material. Necessary paperwork should be kept in a static dissipative bag away from the card and the PC.
- ❑ Masking tape, scotch tape and other adhesive tapes shall not be applied directly to the card. Adhesive labels specified by assembly drawing or instruction may be used as directed.
- ❑ Any air stream used to clean or blow off ESD sensitive items shall be ionized and static neutral and must be checked for static generation with an Electrostatic Test sensor.
- ❑ When loading or unloading conductive totes and containers, all personnel must be properly grounded.
- ❑ Care should be taken to avoid damaging the insulation tape on the adapter. Do not cut, tear, pierce or remove the insulation tape.

Installing the Mini PCI Adapter

For additional information on how to install and remove Mini PCI cards on your computer, see the documentation provided with the computer. The following guidelines provide similar instructions.



Danger: To avoid shock hazard when installing the Mini PCI card, disconnect all cables and the AC adapter and remove the battery pack when opening the covers of the system or attached devices.

Caution: After installing the Mini PCI card, do not turn the computer on until the card cover has been closed and secured. Do not operate the computer with the card cover open.

Grasp the card only by the sides that do not contain connectors. Avoid touching any components or connectors on the card. Do not cut, tear, pierce or remove the insulation tape on the card.

1. Do not remove protective coverings from the card.
2. Connect the two ribbon cables to the card. **Note:** The connectors are keyed for correct insertion. Do not force the connections.
3. Connect the two antenna cables to connectors J1 and J2 on the card (either cable can be connected to J1 or J2). **Note:** If there is only one antenna cable, connect it to J1.
4. Position the card, with cables attached, at an angle of 20 to 30 degrees, with the contact edge of the card aligned with the card slot (you may have to pull out the cables to achieve the correct angle with the card).
5. Push the card into the socket and lower the card into place. **Caution:** Be sure cables are positioned to prevent pinching or interference with card installation.
6. Press down on both sides of the card until the two latches click into place in the half-circle notches on each side of the card. The latches should be fully closed and the card firmly secured.
7. Close the Mini PCI card cover and tighten the screw. **Caution:** Do not turn on the computer unless the card cover is secured.
8. Replace the battery pack.
9. Turn the computer over, open the LCD panel and connect the AC adapter.
10. Power up the computer.
11. When you power up the computer, the Microsoft Windows Operating System will recognize the new hardware. Insert the Xircom CD-ROM and follow the Windows instructions to install the appropriate drivers for use with the Mini PCI adapter.

12. Configure your network and communications software as required (see your network administrator for details).

Note: *If prompted during software installation to choose between an older file currently on your computer or a newer file supplied for the Mini PCI adapter, choose to keep the older file.*

SECTION 2

Software Installation

This section describes how to install the software for the Mini PCI adapter.

Windows Installation

Use these instructions for a first-time installation of the Mini PCI adapter software drivers under Windows 98SE, 2000, Me and NT4.0.

- 1 Turn on power to the computer and wait for Windows to start.
- 2 The adapter will be detected and the system will prompt for the location of driver files.
- 3 Insert the Xircom Installation CD and follow the Windows instructions to install the appropriate drivers for use with the Mini PCI adapter. Verify the correct path to the disk, and follow the prompts to complete the installation.
- 4 Windows will recognize the modem and driver files will be installed.
- 5 If prompted, remove the CD and reboot the system.
- 6 Proceed to *Configuration Utility, Section 2*, for information about configuring the Mini PCI adapter.

Windows Modem Troubleshooting

Review this section if any of the following problems occur:

- Modem initialization errors occur when attempting to dial-out using a communications application.
- The modem is not detected.
- Connection fails or other problems occur.

It may be necessary to define a modem type within your communications application. If the Xircom modem is not listed, choose a “Generic Hayes compatible” device.

If your computer is equipped with an infrared communications port, you may need to disable this port. These ports often use COM port resources required for other communications devices. Disable the infrared port both in the computer’s CMOS or BIOS setup program and the Windows Device Manager, as follows:

- 1 Some computers use a hardware setup utility to configure the infrared port in the BIOS. See your computer documentation.
- 2 To disable the infrared communications port in Windows, go to Device Manager tab under System in the Control Panel.
- 3 Double-click the Ports (COM & LPT) entry and the IR Serial Port entry. Remove the check mark under Device Usage.

Modem Diagnostics Tool

Use the modem diagnostics to verify the computer-to-modem interface.

- 1 In the Modems option in Control Panel, click Diagnostics.
- 2 In Diagnostics properties, highlight the COM port associated with the Xircom modem and click the More Info button. This causes Windows to send commands to and read responses from the modem and display information about the modem and its COM port. The Port Information box should display the following information:
 - The IRQ and I/O address of the modem's COM port. These should match the physical configuration of the port or modem adapter.
 - Modem responses to various AT commands. The Xircom modem may return ERROR for some AT commands that are not supported. This does not indicate a failure.

Windows NT 4.0 Modem Setup Installation

Use these instructions for a first-time installation of the Mini PCI adapter software drivers under Windows NT 4.0.

Before the modem can be installed, a COM port must be installed. Do not reboot the computer between adding the COM port and adding the modem.

1. Turn on power to the computer and wait for Windows NT to start.
2. In the Control Panel, double-click the Ports icon.
3. Add a new COM port (e.g. COM2 serial port) and use the default settings.
4. Before you reboot the system, in the Control Panel, double-click the Modems icon.
5. Install the modem on the COM port selected in step 3.
6. When prompted for modem drivers, insert the disk containing the driver files, verify that the correct path to the disk, and follow the prompts to complete the installation.
7. After you install the modem, you will see **Xircom Wireless Ethernet Mini-PCI Adapter** in Modems dialog of the Control Panel.
8. Finally, complete the installation by rebooting the computer.

Section 3

Configuration Utility

This section described how to use the Configuration Utility for the Mini PCI adapter.

Introduction

The WLAN Mini PCI adapter enables high-speed access to internet and intranet assets without wires. This card uses the IEEE 802.11 protocol to enable communications between the host computer and either another host computer or a network, using the 2.4GHz ISM Radio Band for the communications medium. The host computer uses the adapter for communications in the same way that it would use an Ethernet Network Interface Card (NIC).

The Configuration Utility is a Windows application that allows the user of a computer equipped with a adapter to configure the adapter and to display the current configuration for the adapter.

Installing the Configuration Utility

The Configuration Utility is installed simultaneously with the adapter driver by executing the utility for the Windows.exe file. The following dialog shows the first dialog.



1. Click the **Finish** button to install the driver and the Configuration Utility on your computer

System Tray Icon

After the installation of the Configuration Utility, an icon appears in the System Tray in the bottom right corner of your desktop.



The red, yellow and green colors of the icon indicate the link status.



Red indicates no or very poor link quality.

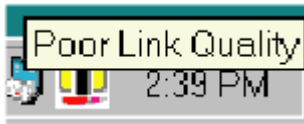


Yellow indicates a usable but weak link.



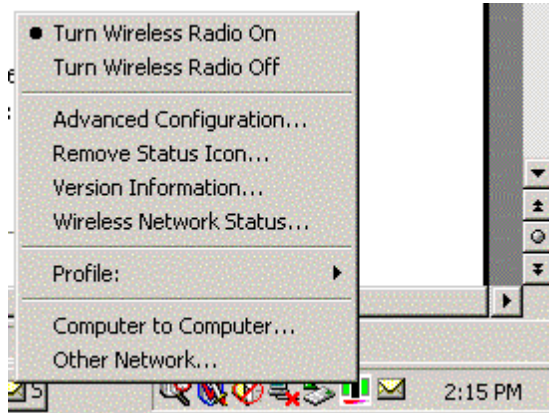
Green indicates a strong link.

The status of the link can also be viewed by placing the cursor over the Configuration Utility icon, as shown in the following illustration. This illustration indicates that the adapter is able to communicate, but that the signal to the radio is weak.



Icon Menu

Right-clicking on the System Tray Icon displays a menu similar to the following illustration:

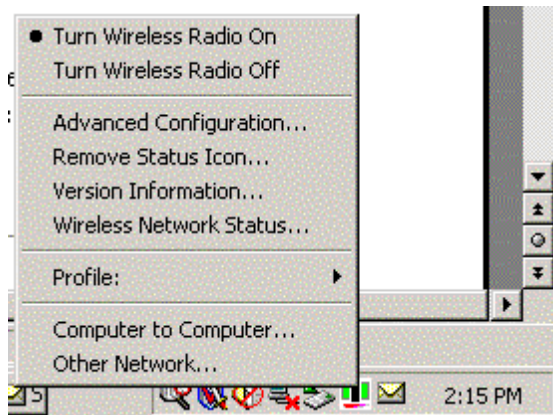


The first two items in this menu let you turn the wireless radio on or off. Advanced Configuration... launches the Configuration Utility application as discussed in the following section. This lets you set configuration parameters that change the behavior of the adapter. Remove Status Icon... removes the System Tray Icon. The driver continues to operate the card in the last commanded configuration. The next time you power up your computer, the configuration utility will return. You can also restart the Configuration Utility from the Start Menu by selecting Programs and Configuration Utility.

- **Version Information...** launches the Configuration Utility with the About page selected, giving the revision level of the driver, configuration utility and firmware.
- **Wireless Network Status...** launches the Configuration Utility with the Status page selected. This shows the link status, including Signal Strength and Link Quality.
- **Profile:** lets you create, delete, and edit profiles. A profile is a named set of configuration parameters that can be recalled.
- **Computer to Computer...** and **Other Network...** let you configure profiles for AdHoc mode or Infrastructure Mode.

Starting the Configuration Utility

You can launch the Configuration Utility either by double-clicking (with the left mouse button) on the Configuration Utility icon or by right clicking on the Configuration Utility icon and selecting Advanced Configuration...

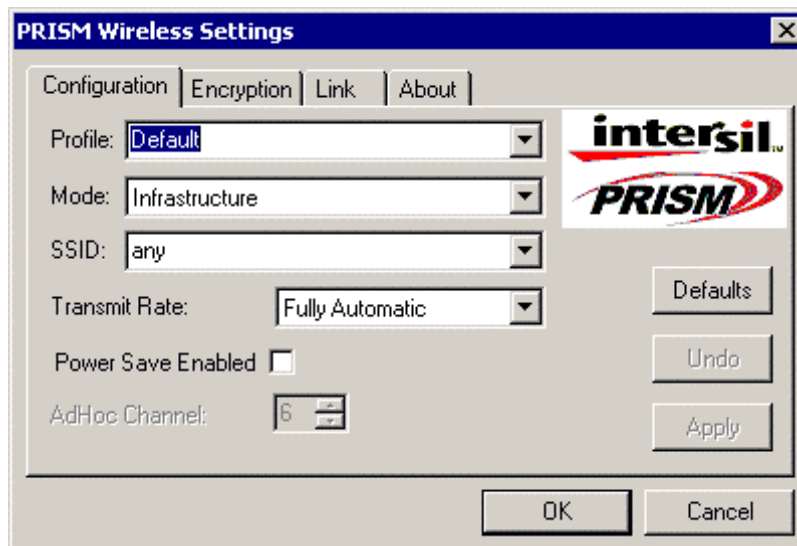


If the Configuration Utility icon is not displayed in the System Tray, you can restart the Configuration Utility from the Start Menu by selecting Programs and Configuration Utility.

The Configuration Utility consists of four menus: Configuration, Encryption, Link, and About. The following sections describe these menus in detail.

Configuration Menu

The Configuration menu lets you specify the operating parameters for your adapter. When you first start the Configuration Utility, this menu is displayed. If another menu is displayed, you can display the Configuration menu by clicking on its tab in the Configuration Utility panel.



Setting the Profile

A profile is a named set of operating parameters for your adapter. The Profile field lets you set values for all parameters by selecting a previously defined profile. Click the down arrow at the right of the Profile field to display the available profiles for your adapter.

You will always have at least one profile, named Default. Initially, this profile contains the parameters configured at installation. You can modify this profile at any time after the installation. After changing parameters, you can save them in the profile named in this field by clicking the Apply button in the Configuration Utility panel.

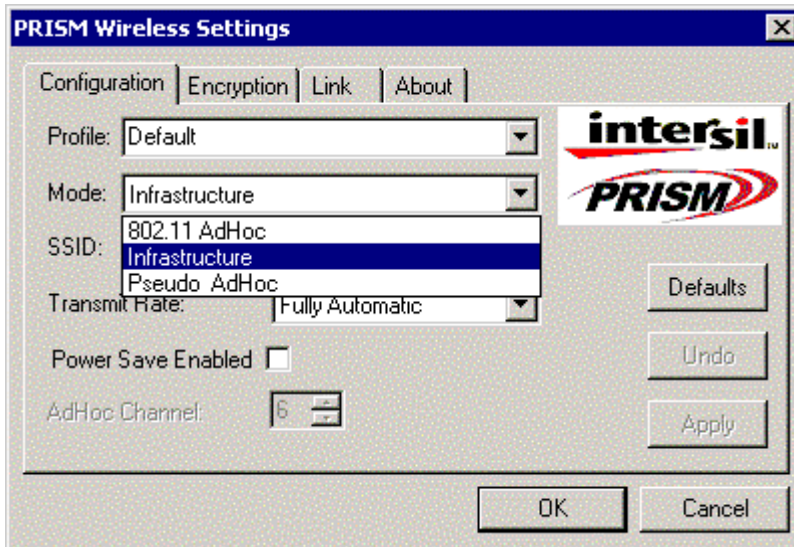
You can also create additional profiles by typing a name in the Profile field. When you change the name in the Profile field and then click the Apply button, the Configuration Utility uses the current parameters for your card to create a separate profile. You can then switch between profiles by clicking the down arrow at the right of the Profile field, selecting a profile from the drop-down list, and clicking the Apply button.

The following example describes a situation in which you would want to create multiple profiles. Suppose that you use the wireless LAN at your work, but you also have a network in your home (with a wireless Access Point) for sharing an internet connection and a printer between several computers. Suppose also that you have another office within your business which also has WLAN capability, but which is configured differently than your main office.

In this situation, you can create a different profile for each of these three environments. Each profile specifies the parameters used on a single network. Moving from one location to another, you only need to apply the appropriate profile to be able to participate in the local network.

Setting the Mode

The adapter can operating in one of three modes, which are specified in the Mode field of the Configuration menu. Clicking the down arrow at the right of the Mode field displays the available modes.



802.11 AdHoc Mode

IEEE 802.11, the standard on which the WLAN protocol is based, defines two modes to handle two separate needs. The first, called AdHoc (or IBSS) mode, is used when two or more wirelessly-enabled PCs wish to exchange data directly, without an Access Point. In this case the PCs can establish an AdHoc network in which they are the only members and over which they can exchange data. To exchange data, each computer participating in the AdHoc network must also specify the same SSID and AdHoc Channel in this menu.

Infrastructure Mode

The second mode defined by the IEEE 802.11 standard is called infrastructure mode, and is the primary application for WLAN operation. In this mode all data on the wireless network is directed to an Access Point, which then routes the data to the appropriate wireless station. The Access Point may also be configured to allow data to be bridged from the wireless network to wired networks.

To participate in a wireless LAN in infrastructure mode, every station and Access Point must specify the same SSID. In infrastructure mode, all available channels are scanned for traffic, so there is no need to specify a channel.

Pseudo AdHoc

A third mode has been defined by Intersil, and is used mainly for testing purposes. Pseudo AdHoc mode allows computers to communicate even without exchanging compatibility data. For instance, you can send broadcast frames in this mode over a given channel and expect no interruption by beacons or other packets not involved in the test. This mode can be used for Packet Error Rate Testing, for example, to evaluate performance.

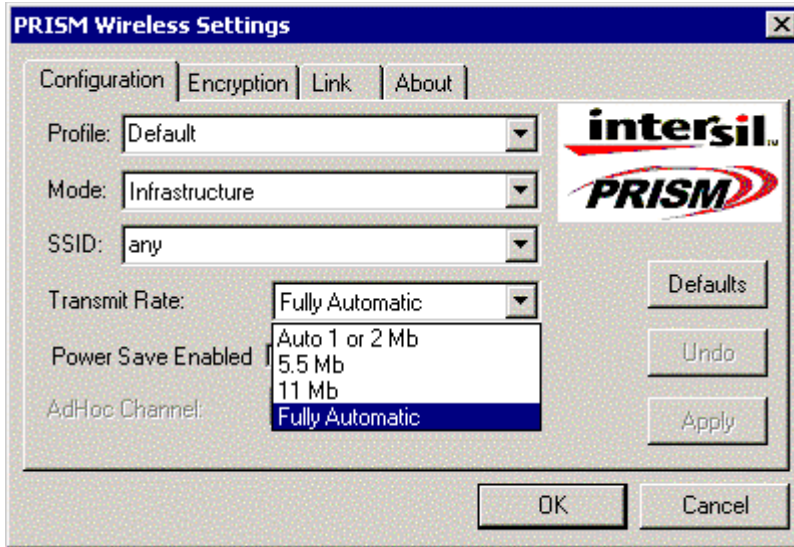
As with AdHoc mode, each computer participating in the Pseudo AdHoc network must also specify the same SSID and AdHoc Channel in this menu. However, note that this mode can only be used to communicate with other adapter.

Setting the SSID

The SSID is the Service Set Identifier used by Access Points and stations to identify a wireless LAN. Your PRISM WLAN Interface card scans the available channels looking for an Access Point (in infrastructure mode) or another station (in AdHoc mode) which has specified this same SSID. It then attempts to associate with these Access Points or stations to form a wireless LAN. To change the SSID, simply highlight it, type the new SSID, and click the Apply button. In typical infrastructure applications a company will use a single SSID for all Access Points. If the radio is scanning and cannot find a channel when an Access Point is known to be in range, verify that the SSID is set correctly.

Setting the Transmit Rate

The Transmit Rate field specifies the rate at which the radio in your adapter's transmits and receives data. You can view the available rates by clicking the down arrow at the right of the Transmit Rate field.



The transmit rate can be set to:

- Fully Automatic – your adapter chooses the highest available rate providing reliable communications based on the capabilities of the Access Point or station with which it communicates and on the received signal quality
- Auto 1 or 2 Mb – allows only 1 and 2 Mb/s operation
- 5.5 Mb – allows only 5.5 Mb/s operation
- 11 Mb – allows only 11Mb/s operation

To change the Transmit Rate, click the down arrow at the right of the field, highlight the rate you want to set, and click the Apply button.

Under most conditions, you should choose Fully Automatic as the transmit rate. In general, fixed rates are used only in test environments.

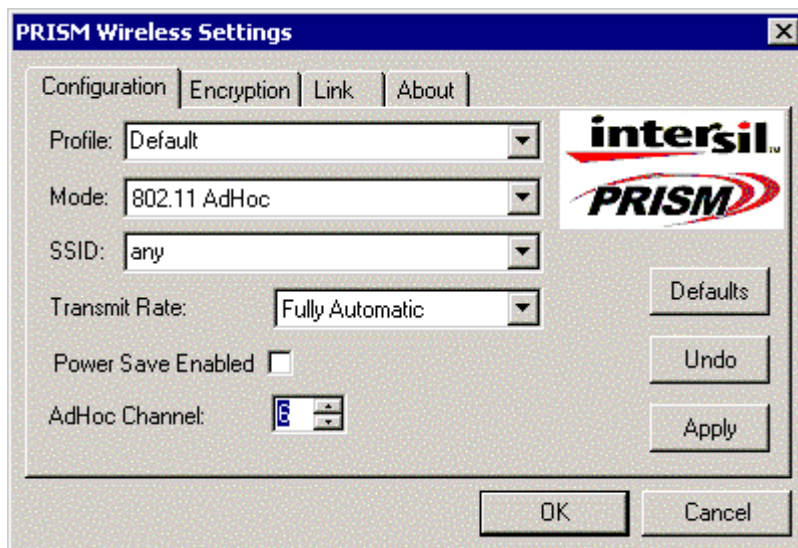
Enabling Power Save Mode

The IEEE 802.11 standard provides a Power Save Mode. In this mode your adapter listens for a beacon (a periodic frame which defines the network type and attributes) and determines the beacon interval. Between beacons the card puts itself to sleep, enabling power savings. At the time of the expected beacon the card wakes itself up and receives the beacon. The received beacon contains information about whether the Access Point or station has buffered frames for the card. If frames are available the card requests those frames until no more frames are available. The card then goes back to sleep until the next beacon.

For Access Points that support power save mode and for stations equipped with WLAN cards, enabling this mode can significantly reduce power consumption, which is particularly important if the host computer is operating on battery power. However, be aware that power save mode also results in lowered transmission and reception speed on the wireless LAN.

Selecting the Ad Hoc Channel

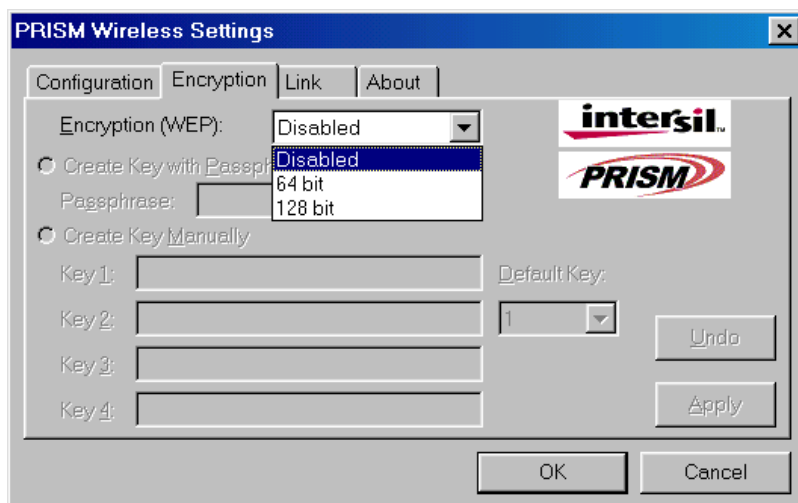
When communicating in AdHoc or Pseudo AdHoc mode, you must specify a channel on which communications will take place. To specify a channel, click the up or down arrow at the right of the AdHoc Channel field until the channel you want to set appears, and then click the Apply button.



This field is grayed in infrastructure mode because the channel is automatically selected by the Access Point.

Encryption Menu

The Encryption menu lets you enable encryption and set the encryption keys. To see the available encryption methods, click the down arrow at the right of the Encryption {WEP} field.



There are two encryption methods available. The IEEE 802.11 specification defines Wired Equivalent Privacy (WEP) using a 64-bit key. This capability was extended by the industry to allow a 128 bit key.

If you specify an encryption method, you will only be able to communicate with Access Points and stations that use the same encryption method and keys.

Disabling Encryption

To disable encryption, click the down arrow at the right of the Encryption field, select Disabled, and click the Apply button.

Enabling Encryption

To enable encryption, click the down arrow at the right of the Encryption field, select either 64 bit or 128 bit, and click the Apply button. After enabling an encryption method, you must then specify encryption keys, as described in the following sections.

Creating Encryption Keys Using a Passphrase

To create encryption keys using a passphrase, click the radio button next to Create Key with Passphrase and type a character string in the Passphrase field. As you type, the Configuration Utility uses an algorithm to generate four keys used for encryption.

The screenshot shows the 'PRISM Wireless Settings' dialog box with the 'Encryption' tab selected. The 'Encryption (WEP)' dropdown menu is set to '64 bit'. Under the 'Create Key with Passphrase' section, the 'Passphrase' field contains the text 'scoobeedo'. Below this, four key fields are populated with hexadecimal strings: Key 1: 3C2C753A3F, Key 2: A0DDFC4BC5, Key 3: D324F4ADB9, and Key 4: DEC3898694. The 'Default Key' dropdown is set to '4'. There are buttons for 'Undo', 'Apply', 'OK', and 'Cancel'.

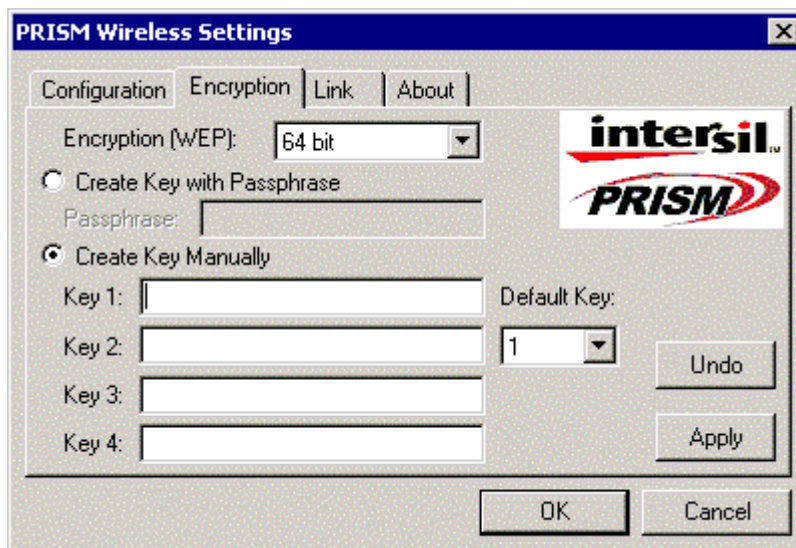
When you finish typing your character string and click the Apply button, the Configuration Utility uses asterisks to mask both your passphrase and the keys it generates.

This screenshot shows the same 'PRISM Wireless Settings' dialog box, but now the 'Passphrase' field and the four key fields are masked with asterisks. The 'Encryption (WEP)' dropdown remains at '64 bit' and the 'Default Key' dropdown remains at '4'. The 'Apply' button is highlighted, indicating it has been clicked.

Using a passphrase to generate the four keys makes it easy to set the same keys for all members of your wireless LAN.

Creating Encryption Keys Manually

If you want, you can create encryption keys manually by clicking the radio button next to Create Key Manually, as shown in the following illustration.



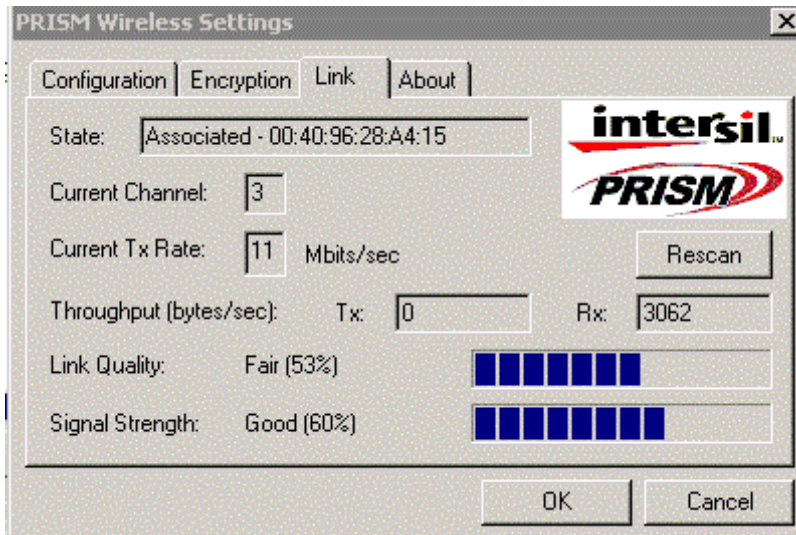
When you click this button, the cursor appears in the field for Key 1. For 64-bit encryption, you must type *exactly* 10 hexadecimal digits in each of the four key fields; for 128-bit encryption, you must type *exactly* 26 hexadecimal digits. You then click the Apply button to create your encryption keys. After you click the Apply button, the Configuration Utility uses asterisks to mask your keys.

Default Key

The Default Key field lets you specify which of the four encryption keys you use to transmit data on your wireless LAN. You can change the default key by clicking on the down arrow at the right of this field, selecting the number of the key you want to use, and then clicking the Apply button. As long as the Access Point or station with which you are communicating has the same key in the same position, you can use any of the keys as the default.

Link Menu

The Link menu provides information on the status of your communications with the wireless LAN.



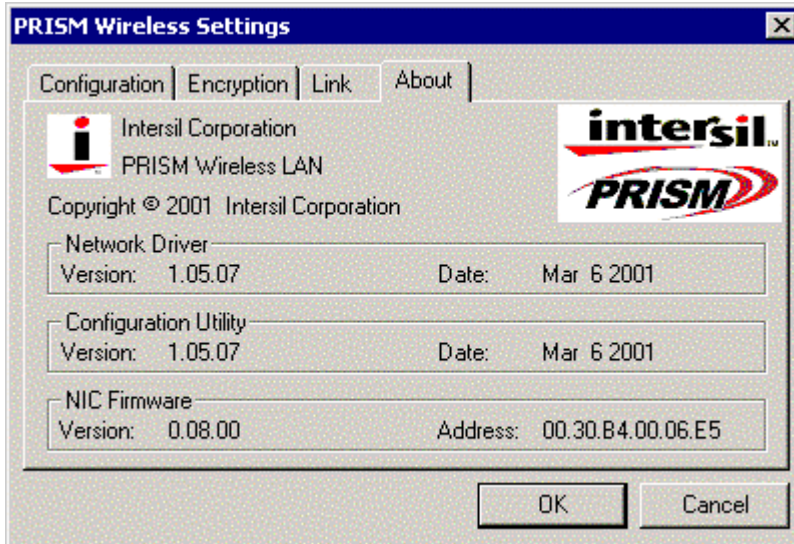
The fields in this menu provide the following information:

- **State:** shows the association state of your computer with the wireless LAN. The above illustration shows that your computer is associated with an Access Point and gives the Access Point's MAC address.
- **Current Channel:** shows the channel on which the connection is made. In Infrastructure mode, this number changes as the radio scans the available channels.
- **Current Tx Rate:** shows the highest transmit rate of the current association.
- **Throughput:** shows the short term transmit and receive throughput in bytes/second continuously updated.
- **Link Quality:** is based on the quality of the received signal of the Access Point beacon.
- **Signal Strength:** is based on the received signal strength measurement of the baseband processor of the Beacon signal.

You can click the Rescan button to force the radio to rescan all available channels. If your link quality or signal strength is poor, rescanning can be used to push the radio off a weak Access Point and search for a better link with another Access Point.

About Menu

The About menu provides information on the version of the Network Driver, the Configuration Utility, and the firmware in the adapter. In addition, this menu also provides the MAC address of the adapter.



Appendix A

Modem AT Commands

This section provides the following information:

- Introduction to Modem AT Commands
- Special Commands
- AT Command Reference

Introduction to Modem AT Commands

Modem AT Commands With the exception of the Special Commands, all commands must be preceded by the **AT** attention code (or command prefix) and terminated by pressing the **Enter** key.

The modem responds with the result code **OK**, which means it understands and can execute the command, or with **ERROR**, which means that the modem does not understand the command or that the command is invalid.

The modem must be in command mode when any command other than the online escape sequence is entered. Commands entered when the modem is in online mode are treated as data and transmitted as such to the modem at the other end of the line.

Some commands are used in coordination with S-Registers.

Special Commands

+++ Online Escape Sequence

The escape sequence is used to switch to command mode from online mode during a session with a remote modem. Type three "plus signs." The escape sequence is not preceded by the AT command prefix, nor does it require the Enter key. The setting of S-Register S2 determines the ASCII character used. S2=43 is the default (the "+" sign). 0-127 are valid. To disable the command, set S2 to a value greater than 127. Use the **ATO** ("AT" and letter "O") command to return to online mode.

Insert a pause before and after the escape sequence to prevent misinterpretation of the escape sequence as data. Use S-Register S12 to set the length of the pause.

A/ Repeat Last Command

The **A/** command causes the modem to repeat the last command string. The command executes as soon as **/** is typed. It does not require the AT command line prefix, nor does it need to be followed by Enter.

AT Command Reference

A Answer

Typing **ATA** causes the modem to go off-hook and respond to an incoming call by generating a carrier signal and starting the handshaking process. This must be the only command or the final command in the command line.

If the handshaking process is successful and a connection is established, the normal *CONNECT* message is displayed. If the carrier signal is not detected within the time specified in S-Register **S7**, a *NO CARRIER* result code is displayed.

Bn Select Communications Standard

The **ATBn** command selects the communication standard (ITU or Bell) to be used by the modem, as follows:

B0	Use ITU V.22 at 1200bps. B0 selects ITU V.22 at 1200bps and ITU V.21 at 300bps.
B1	Use Bell 212A at 1200bps. B1 selects Bell 212A at 1200bps and Bell 103J at 300bps.
B2	Unselect V.23 reverse channel.
B3	Select V.23 reverse channel.
B15	Selects V.21 when the modem is at 300bps (same as B0).
B16	Selects Bell103J when the modem is at 300bps (same as B1).

The ATB1 and ATB16 parameter settings are not available in some countries. Defaults are country-specific.

Break (Escape) command See Special Commands.

Cn Carrier Control

The **ATCn** command, where n is 1, guarantees backward compatibility with communications software that issues the C1 command. C0 is not supported; it may set some modems to "receive only mode."

C0	Transmit carrier always off (<i>not supported</i>).
C1	Normal transmit carrier switching.

Dn Dial A Telephone Number The **ATDn** command is used to dial a telephone number. The n represents a dial string consisting of dial digits/characters and dial modifiers (see below) and must not exceed 40 characters. Spaces, hyphens, and parentheses can be used for clarity, but they are ignored by the modem.

The Dial command can be used for either pulse (rotary) or tone dialing. The dial digits/characters are 0 - 9 A B C D # *. The characters A B C D and the symbols # and * represent specific tone pairs and can be used only when tone dialing. These characters and symbols are ignored when pulse dialing is used. Some countries restrict or prohibit the use of some of these characters.

Dial Modifiers

Dial modifiers are recognized by the modem only when they are part of a dial string following the ATD command. Possible dial modifiers are:

L Redial Last Number

Redials last number if used as first character following ATD. Otherwise it is ignored.

P Pulse Dialing Method

The P modifier is used with the Dial command to instruct the modem to pulse dial the telephone number that follows.

S=n Dial a Stored Telephone Number

The S modifier instructs the modem to dial a number that had been previously stored by the use of the AT&Zn=x command. The command to dial a stored telephone number is ATDS=n, where n represents telephone number storage location 0 or 1. For example, ATD P S=1 pulse dials the telephone number written to telephone number storage location 1.

, Delay Processing the Next Character

When the comma (,) modifier is included as part of the dial string following the ATD command, the modem pauses before processing the next character in the dial string. The duration of the pause is dictated by the contents of S-Register S8.

The , modifier is frequently inserted after the digit (usually 9) used to obtain an outside line from a PBX to allow sufficient time for the dial tone to occur before the modem dials the telephone number. The W modifier can be used in place of the comma.

Some countries place restrictions on the amount of time a modem may delay during dialing.

T Tone Dialing Method

The T modifier is used with the Dial command to instruct the modem to tone dial the telephone number that follows. See also the ATT command.

W Wait for Second Dial Tone

The W modifier instructs the modem to wait for a dial tone before processing the remaining characters in the dial string.

! Hook Flash

The ! modifier serves as a switch hook (or hook flash) signal. This causes the modem to hang up (go on-hook) for about 0.5 seconds then return to off-hook (the actual duration of the hook flash varies in different countries).

@ Wait for Quiet Answer

The @ modifier in a dial string instructs the modem to wait for five seconds of silence after dialing the number. If silence is not detected, the modem sends a NO ANSWER result code to the user.

; Return to Command Mode after Dialing

The semicolon (;) dial modifier can be used only at the end of a command line, immediately preceding the Enter, and instructs the modem to return to the command mode immediately after dialing and without breaking the connection with the distant modem.

^ Disable Data Calling Tone Transmission

The ^ modifier in a dial string disables data calling tone for the current call (calling tone is automatically enabled in many countries). This modifier is not available in all countries.

\$ Credit Card Tone Detect

The \$ modifier in a dial string instructs the modem to wait for a credit card "bong" tone before processing the remaining characters in the dial string.

En Echo Command

The ATEn command, where n represents 0 or 1, determines if the commands you issue through the keyboard to the modem in command mode are displayed (echoed) on your computer's monitor screen.

E0	Disable echo to the computer.
E1	Enable echo to the computer (default).

If the commands you type are not displayed on your monitor screen, your software is set to expect character echo from the remote system. You can remedy this by typing in the command ATE1. If the commands you type are displayed on your monitor with the characters duplicated, *LLIKKEETTHHISS*, type in the ATE0 command.

Hn Switch Hook Options

The ATHn command hangs up the modem or prepares it for dialing.

ATH0	Causes the modem to go on-hook (default).
ATH1	Causes the modem to go off-hook (this command is restricted in some countries).

In Request ID Information

The ATI command has various options which are used to instruct the modem to provide specific information about itself.

I0	Displays modem controller firmware revision (same as I3).
I1	Calculates ROM checksum and displays it on the DTE (for example, 12AB).
I2	Performs a ROM check and calculates and verifies the checksum. displaying OK or ERROR..
I3	Displays modem firmware revision information.
I12	Returns country code (for example, North America).

Ln Monitor Speaker Volume

The ATLn command, where n represents 0, 1, 2, or 3, is listed here for backward compatibility reference only. The volume of the monitor speaker is controlled by the computer, not by the modem.

Mn Speaker On/Off Selection

The **ATMn** command, where n represents 0, 1, 2, or 3, enables or disables the transmission of sound signals from the modem to the computer speaker. (Sound production also requires that the computer speaker be enabled.)

M0	Speaker always off.
M1	Speaker on until data carrier is detected.
M2	Speaker always on when modem is off-hook.
M3	Speaker off as digits are dialed, then on after dialing until data carrier is detected.

Nn Negotiation of Handshaking Options

The **ATNn** command, where n represents 0 or 1, determines whether or not the sending modem performs a negotiated handshake when the speed of the answering modem is different from that of the sending modem.

N0	When originating or answering, handshake only at the communication standard specified by the contents of S-Register S37 and the ATBn command option selected.
N1	When originating or answering, handshake only at the communication standard specified by the contents of S-Register S37 and the ATBn command option selected. During handshaking, fall back to a lower speed, if required (default).

On Online Command

If the modem has been switched to command mode, typing in the **ATO0** command will return it to the online mode with the existing connection.

O0	Instructs modem to leave online command mode and return to data mode (see +++ Escape Sequence under Special Commands).
O1	This setting issues a retrain command before returning to online data mode.
O2	This setting issues a rate negotiation command before returning to online data mode.

P Select Pulse Dialing

The **ATP** command instructs the modem to use pulse (rotary) dialing. This mode will remain in force for all dialing procedures unless an **ATT** command is issued or the dial string contains a T dial modifier.

Qn Result Code Display Options

The setting of the **ATQn** command, where n represents 0 or 1, determines whether or not result codes (such as OK, CONNECT, RING, NO CARRIER, and ERROR) are displayed on your PC's screen.

Q0	Display of result codes enabled.
Q1	Display of result codes disabled.

Repeat command

See Special Commands.

T Select Tone Dialing

The ATT command instructs the modem to use tone dialing. This mode will remain in force for all dialing procedures unless an ATP command is issued or the dial string contains a P dial modifier. Tone dialing is the factory-default setting.

Vn Result Code Format Options

The ATVn command, where n represents 0 or 1, determines if result codes are displayed as numeric (short form) codes or words (long form). Numeric result codes contain only one or two digits and this form could be used, for example, when the modem is controlled by a software terminal emulation program that uses script files. See the list at the beginning of this topic showing result codes in both long and short formats.

Type the command ATV or ATV0 to select numeric result codes. The factory default is to display the result codes as words (ATV1). You should issue an ATV1 command either to reset the factory default after a change has been made or to select the long-form (word) result codes. Negotiation progress messages (extended result codes) are those with a numerical value of 40 or more.

Four other AT commands, two dial modifiers, and an S-Register are also directly involved in the generation and display of result codes. These are the ATQn, ATVn, ATWn, and ATXn commands, the ATDW and ATD@ dial modifiers, and S-Register S95.

Wn Negotiation Progress Message Selection

The ATWn command, where n represents 0, 1, or 2, works in conjunction with S-Register S95 to determine how that subset of the result codes - called negotiation progress messages or extended result codes - will be used to report the type of connection, protocol, and other communication techniques that resulted from handshaking and subsequent negotiation.

The options available to represent n in the ATWn command are:

W0	CONNECT result code reports DTE speed. If S-Register S95=0, disable the display of all extended result codes.
W1	CONNECT result code reports DTE speed. If S-Register S95=0, enable the display of CARRIER and PROTOCOL extended result codes only.
W2	CONNECT result code reports DCE (modem-to-modem) speed. If S-Register S95=0, disable the display of all extended result codes.

Xn Result Code Set/Call Progress Option

The ATXn command, where n represents 0-4, controls how the modem responds to dial tone and busy signals and how it displays CONNECT result codes. The options available to specify with the ATXn command are:

X0	Result codes 0-4 enabled. Busy detect and dial tone detect disabled.
X1	Result codes 0-5, and 10 enabled. Busy detect and dial tone detect disabled.
X2	Result codes 0-6, and 10 enabled. Busy detect disabled and dial tone detect enabled.
X3	Result codes 0-5, 7, and 10 enabled. Busy detect enabled and dial tone detect disabled.
X4	Result codes 0-7, and 10 enabled. Busy detect and dial tone detect enabled.

Caution: Some countries do not allow busy detect or dial tone detect to be disabled.

Yn Long Space Disconnect Option

The ATYn command, where n represents 0 or 1, determines whether or not the modem will disconnect a call when it receives a long space (1.6 seconds Break) signal during a V.22bis connection.

Y0	Disables the long space disconnect facility (supported for backward compatibility reference only).
Y1	Enables the long space disconnect facility (<i>not supported</i>).

Zn Recall Stored Profile

The ATZn command, where n represents 0, disconnects any call that is currently in progress and reloads the user configuration profile stored in nonvolatile memory as the active configuration profile.

Z0	Disconnect and reload the profile contained in storage location 0 as the active configuration profile.
----	--

&Bn V.32 Automatic Retrain Options

The Xircom modem always retrains. The automatic retrain feature cannot be disabled.

&B0	Disables the V.32 automatic retrain capability (not supported).
&B1	Enables the V.32 automatic retrain capability (supported for backward compatibility only).

&Cn Data Carrier Detect (DCD)

The AT&Cn command, where n represents 0 or 1, selects the method by which the modem handles the carrier detect signal.

&C0	The carrier detect signal is forced on regardless of the condition of the distant modem's carrier.
&C1	The state of the carrier from the remote modem is monitored. The local modem's DCD signal is on when the remote modem's carrier signal is detected, and off when it is not (default).

&Dn Data Terminal Ready (DTR) Options

The AT&Dn command, where n represents 0-3, controls how the Data Terminal Ready (DTR) signal is used by the modem.

&D0	Ignore the DTR signal from the computer and treat it as always on.
&D1	Monitor DTR and, when an ON-to-OFF transition of the DTR signal occurs, switch to command mode, issue an OK result code, and remain connected.
&D2	Monitor DTR and, when an ON-to-OFF transition of the DTR signal occurs, hang up the line and switch to command mode.
&D3	Monitor DTR and, when an ON-to-OFF transition of the DTR signal occurs, hang up, reset the modem and switch to the initialization state.

&Fn Load Factory Settings

The AT&F command loads factory default parameters from ROM into the active configuration profile, replacing the parameters stored there. This command must be issued by itself. If it is used with another AT command, its function will be ignored.

&F0	Recall factory settings as active configuration.
&F5	Recall factory settings appropriate for ETC mode as active configuration. This command enables ETC operation. It is automatically set upon detection of a cellular phone. The following options are set with &F5:

Local Factory Settings

Function	MTC Implementation
LAPM-only error correction	\N4
Transmit level fixed per cellular phone	S92
Wait for carrier = 90 sec	S7=90
CD loss delay = 10 sec	S10=100
Auto FF/FB enabled	N/A
Start up at 9600bps	S40=2

&Gn V.22bis Guard Tone Selection

This option is for international use only. It is not used in North America. The AT&Gn determines which guard tone, if any, to transmit while in answer mode (transmitting in the high band). The value of n can be 0, 1, or 2. This parameter is set automatically for most countries that require it.

&G0	No guard tone set.
&G1	Enable RTS/CTS flow control (default).
&G2	1800-Hz guard tone set.

&Jn Auxiliary Relay Option

&J0	Auxiliary relay is never closed.
&J1	Not supported (returns ERROR).

&Kn Local Flow Control Options

The AT&Kn command, where n represents 0-4, determines how the flow control between the computer and the local modem is handled.

&K0	Disable local flow control.
&K3	Enable RTS/CTS flow control (default).
&K4	Enable XON/XOFF flow control.

&Mn Communications Mode

The AT&Mn command, where n represents 0-4, determines how the flow control between the computer and the local modem is handled.

&M0	Asynchronous mode (default; supplied for backward compatibility only).
----------------	--

&Pn Pulse Dial Make-to-Break Ratio Selection

The AT&Pn command, where n represents 0, 1, or 2, controls the ratio of the off-hook (make) to on-hook (break) interval used by the modem when it pulse dials.

&P0	Selects 39:61 make/break ratio at 10 pps (default - U.S.).
&P1	Selects 33:67 make/break ratio at 10 pps (default - Japan).
&P2	Selects 33:67 make/break ratio at 20 pps (option - Japan).

&Qn Asynchronous Communications Mode

&Q0	Asynchronous mode, buffered (same as \N0).
&Q5	Error control mode, buffered (default; same as \N3).
&Q6	Asynchronous mode, buffered (same as \N0).

&Sn Data Set Ready (DSR) Options

The AT&Sn command controls the functions of the modem's DSR circuits.

&S0	The DSR signal remains on all the time the modem is powered on (default).
&S1	The DSR signal is on during handshaking and is off when carrier is lost.

&Tn Self-Test Commands

The AT&Tn command allows the user to perform diagnostic tests on the modem.

&T0	Abort. Stops any test in progress.
&T1	Local analog loop. this test verifies modem operation, as well as the connection between the modem and computer. The modem must be off-line when this test is run.
&T3	Local digital loopback test.
&T6	Remote digital loopback test. This test can verify the integrity of the local modem, the communications link, and the remote modem. The modems must be online with error control disabled when this test is run.

&V View Configuration Profile

The AT&V command displays the contents of the active configuration profile.

&Wn Write Active Profile to Memory

The AT&Wn command, where n is 0, allows you to save a copy of the current active configuration profile to nonvolatile memory. This profile can be restored at any time by using the ATZ command or a power-up reset of the modem.

&Yn Select Stored Profile for Hard Reset

This command is included for compatibility with applications that use the &Y0 command. It does not affect the behavior of the modem.

&Y0	Select stored profile 0 on power up.
&Y1	Not supported, returns ERROR.

&Zn=x Store Telephone Number

The AT&Zn=x command is used to store a telephone number for later dialing using the ATDS=n (dial stored number) command. In this command, n is 0 or 1 representing 2 storage locations and x is the stored number. The dial string may contain up to 40 characters.

\Gn Modem Port Flow Control

The AT**Gn** command determines whether XON/XOFF flow control will be used.

\G0	Returns OK for compatibility (default).
\G1	Not supported; returns ERROR.

\Jn Adjust BPS Rate Control

\J0	Turn off feature (default).
\J1	Turn on feature.

\Kn Break Control

The AT**Kn** command determines how the modem processes a Break signal received from the local DTE during a connection (online).

\K5	Modem sends Break to remote modem in sequence with transmitted data, nondestructive/nonexpedited (default).
------------	---

\Nn Error Mode Control Selection

The AT**Nn** command sets the type of error correction supported by the modem when sending or receiving data.

\N0	Buffered mode. No error control (same as &Q6).
\N1	Buffered mode (same as \N0).
\N2	LAPM, MNP or disconnect mode. This is also known as reliable mode.
\N3	LAPM, MNP, or buffered (default). The modem attempts to connect in LAPM error control mode. If this fails, the modem attempts to connect in MNP mode. If this fails, the modem connects in buffered mode and continues operation. This is also known as V.42 auto-reliable mode (same as &Q5).
\N4	LAPM or disconnect. The modem attempts to connect in LAPM error control mode. If this fails, the call will be disconnected.
\N5	MNP or disconnect mode. The modem attempts to connect using MNP 2-4 error control procedures. If this fails, the modem disconnects. This is also known as MNP reliable mode.

\Qn Local Flow Control Selection

The AT**Qn** command sets the type of flow control used on the serial port to adjust for differences in modem port speed.

\Q0	Disables flow control (same as &K0).
\Q1	Sets flow control to XON/XOFF (same as &K4).
\Q3	RTS/CTS to DTE (default; same as &K3).

\Tn Inactivity Timer Limit

The AT**Tn** command specifies length of time (in minutes) that the modem waits before disconnecting when no data is sent or received. The time period can be set at $n = 0 - 255$. A setting of zero disables the timer. As an alternative, the timer may be specified in S-Register S30. This function is only applicable in buffer mode.

\Xn XON/XOFF Pass Through

\X0	Modem process XON/XOFF flow control characters locally (default).
\X1	Not supported; returns ERROR.

%B View Numbers in Blacklist

If blacklisting is in effect, the AT**%B** command displays the numbers for which the last call attempted in the past two hours failed. In countries that do not require blacklisting, this command returns ERROR.

%Cn Data Compression Control

The AT**%Cn** command determines the operation of V.42bis and MNP class 5 data compression. Online changes do not take effect until a disconnect occurs.

%C0	V.42bis/MNP Class 5 compression disabled (no data compression).
%C1	MNP Class 5 compression enabled (no V.42bis).
%C2	V.42bis compression enabled (no MNP Class 5).
%C3	V.42bis/MNP Class 5 data compression enabled (default).

-Cn Data Calling Tone

Data calling tone is a tone of a certain frequency and cadence specified in V.25 that allows remotes data/fax/voice discrimination. The frequency is 1300 Hz with a cadence of 0.5 seconds on and 2 seconds off.

-C0	Disables calling tone (default).
-C1	Enables calling tone.

Caution: Some countries do not permit calling tone to be disabled.

+GCAP Request Complete Capabilities List Syntax:

Syntax:	AT+GCAP
	AT+GCAP=?

This command displays one or more lines of information text, in a standard format, describing the basic capabilities of the modem. This allows a software package to determine which groups of extended-syntax commands the modem supports. The response may contain one or more of the following responses:

+CGSM	GSM (+C) commands.
+DS	Data Compression (+D) commands.
+ES	Error Control (+E) commands.
+FCLASS	Fax (+F) commands.
+MS	Modulation Control (+M) commands.
+W	Wireless (+W) commands.

+GCAP=? may be used to determine whether the modem supports the +GCAP command: an OK response indicates support, ERROR indicates non-implementation.

+GCI Country of Installation

Syntax:	AT+GCI=<T.35 code>
	AT+GCI?
	AT+GCI=?

This command configures the modem for the country of use, selecting operational parameters and ensuring conformity to the requirements of the selected country's telephone network. The +GCI parameter may only be changed when the modem is in an idle state.

Note 1: *The Xircom CountrySelect utility is recommended for setting country parameters for modem calls. The CountrySelect utility is accessible after installation at Start, Programs, Xircom Utilities.*

Note 2: *To determine what countries are supported by your Xircom modem product, run the Xircom CountrySelect utility using Start, Run, Xircom Utilities, CountrySelect, or use the command AT+CGI=?. The AT+CGI=? command will respond with the T.35 codes for the countries supported. The list of <T.35> codes below includes countries supported by this product at time of publication, but not all countries listed are supported by this product.*

Caution: For units sold in Japan, Japan has been set as the default country setting. Use of any other country setting for calls originating in Japan is a violation of local law.

To change the current country selection, use AT+GCI=<T.35 code> (but see Notes 1 and 2 above).

Country	<T.35 code>	Country	<T.35 code>
Argentina	07	Mexico	73
Australia	09	Netherlands	7B
Austria	0A	New Zealand	7E
Barbados	0E	Norway	82
Belgium	0F	Panama	85
Brazil	16	Philippines	89
Canada	20	Poland	8A
China	26	Portugal	8B
Czech Republic	2E	Puerto Rico	8C
Denmark	31	Russia	B8
Finland	3C	Singapore	9C
France	3D	Slovakia	FC
Germany	04	Slovenia	FB
Greece	46	South Africa	9F
Guam	48	South Korea	61
Hong Kong	50	Spain	A0
Hungary	51	Sweden	A5
Iceland	52	Switzerland	A6
India	53	Taiwan	FE
Indonesia	54	Thailand	A9
Ireland	57	Turkey	AE
Israel	58	United Kingdom	B4

Italy	59	United States	B5
Japan	00	Universal	FD
Kuwait	C2	United Arab Emirates	B3
Liechtenstein	68	US Virgin Islands	FA
Luxembourg	69	Venezuela	BB
Malaysia	6C	Vietnam	BC

+GMI Request Manufacturer Identification

Syntax:	AT+GMI
	AT+GMI=?

This command displays one or more lines of information text, identifying the manufacturer of the modem. +GMI=? may be used to determine whether the adapter supports the +GMI command: an OK response indicates support, ERROR indicates non-implementation.

+GMM Request Model Identification Syntax:

Syntax:	AT+GMM
	AT+GMM=?

This command displays one or more lines of information text, identifying the modem model. +GMM=? may be used to determine whether the modem supports the +GMM command: an OK response indicates support, ERROR indicates non-implementation.

+GMR Request Revision Identification Syntax:

Syntax:	AT+GMR
	AT+GMR=?

This command displays one or more lines of information text, identifying the revision level of the firmware of the modem. +GMR=? may be used to determine whether the adapter supports the +GMR command: an OK response indicates support, ERROR indicates non-implementation.

+MS Modulation Selection

Caution: The AT+MS command is not applicable under the V.90 standard for 56K modems. To set V.90 operation, see S-Register S109.

The AT+MS parameter controls data modulations and bit rates that may be negotiated between a local and remote modem. It accepts four subparameters.

Syntax:	AT+MS=<carrier>,<automode>,<min_rate>,<max_rate>
	AT+MS?
	AT+MS=?
+MS?	Reports the current settings of subparameters
+MS=?	Displays range of acceptable values for each subparameter
<carrier>	Specifies the preferred modulation to be used in originating or answering a connection. The <carrier> subparameter is an unquoted string of characters. If the <carrier> parameter is specified, the other subparameters will revert to factory defaults. If <carrier> is omitted, any unspecified parameters will keep their current values (for example, AT+MS=,0 or AT+MS=,,,2400).
	Values accepted for <carrier> are the following: B103 Bell 103 (300bps) B212 Bell 212A (1200bps) V21 ITU-T V.21 (300bps) V22 ITU-T V.22 (1200bps) V22B ITU-T V.22bis (2400bps) V23C ITU-T V.23 with constant carrier (1200/75 or 75/1200bps) V32 ITU-T V.32 (4800 or 9600bps) V32B ITU-T V.32bis (4800 - 19200bps) V34 ITU-T V.34 (2400 - 33600bps) K56 Lucent/Rockwell K56flex (32000 - 56000bps). Not applicable under the V.90 standard. To set V.90, see S-Register S109.
<automode>	Enables or disables negotiation of an alternative <carrier> if the preferred modulation is not available.
	Values accepted for <automode> are the following: 0 Disabled. Modem will disconnect if it is unable to negotiate a connection with the specified <carrier>. 1 Enabled (default). If the specified <carrier> is unavailable, modem will attempt to negotiate an alternative carrier as appropriate.
<min_rate>	Specifies the lowest bit rate at which the modem may establish a connection. (This value is fixed at zero for the Xircom modem.)
<max_rate>	Specifies the highest bit rate at which the modem may establish a connection. For modulations that support only a fixed bit rate (such as V.22bis), <max_rate> has a fixed value to which it defaults. If the default rate or a rate other than zero is specified, the modem will return ERROR. This subparameter accepts the following values: 0, 300, 1200, 2400, 4800, 7200, 9600, 12000, 14400, 16800, 19200, 21600, 24000, 31200, 33600bps. If unspecified (set to 0), <max_rate> is determined by the value of <carrier>. If the <carrier> setting is K56, the <max_rate> subparameter should be left at the default value (zero).

Modem S-Registers

This section provides the following information:

- Introduction to S-Registers
- S-Register Reference

Introduction to S-Registers

The Xircom modem uses memory storage locations, or S-Registers, to hold information controlling its operating environment. Few of these S-Registers require attention from modem users. S-Registers are used in conjunction with Modem AT Commands.

To display the value of an S-Register, type `ATS n ?` where n is the number of the S-Register, then press Enter.

To modify the value of an S-Register, type `ATS n = r` where n is the S-Register number and r is the new value or setting, then press Enter.

S-Register Reference

S0 Ring to Answer After

- The contents of register **S0** sets the number of rings required before the modem goes off-hook to answer an incoming call (auto answer). The value can range from 0 to 255. `ATS0=0` disables the auto-answer function. The default is 0.

S1 Ring Counter

- This register is read only. The value of **S1** increments with each ring. If no rings occur over a six-second interval, the register is cleared. The value of **S1** can range from 0 to 255. The default is 0. There may be country-specific limits.

S2 AT Escape Character

- Register **S2** defines the ASCII character used in the Escape sequence. This command is used to return to command mode without losing the connection with a remote modem. Default is `S2=43`, which is the "+" character. Thus the default Escape sequence is `+++`. ASCII values 127 and below can be used. To disable this Escape sequence, set **S2** equal to a value greater than 127.

S3 Command Line Termination Character

- This register contains the ASCII value of the command line terminating character (carriage return). The factory default value is **ASCII 13** - the carriage return character. You can set register **S3** to any value between 0 and 127.

S4 Response Formatting Character

- This register contains the ASCII value of the line feed character. The factory default value is **10**. You can set register **S4** to any value between 0 and 127. The modem uses a line feed character in command mode when it responds to the computer.

S5 Command Line Editing Character

- This register contains the ASCII value of the backspace character and is applicable to asynchronous transmissions only. The factory default value is **8**. You can set register **S5** to any value between 0 and 32, or to 127. The modem will not recognize the backspace character if it is set to a value greater than ASCII 32.

S6 Wait Before Blind Dialing

- This register determines how long the modem waits after going off-hook before dialing the first digit. The wait must be at least 2 seconds. Register **S6** can be set to any value between 2 and 65 seconds. The default is **2 seconds**. The value of the **W** dial modifier will override the value in register **S6**. This operation, however, may be affected by some ATX options according to country restrictions. There may be country-specific defaults and limits.

S7 Connection Completion Time-Out

- This register determines the number of seconds the originating modem waits for a carrier signal from the answering modem before hanging up. The timer is started when the modem finishes dialing (originate), or goes off-hook (answer). In originate mode, the timer is reset upon detection of an answer tone if allowed by country restriction. The timer also specifies the wait for silence time with the **@** dial modifier (in seconds). **S7** is not associated with the **W** dial modifier. Register **S7** can be set at from 1 to 255 seconds with a default of **50 seconds**. There may be country-specific defaults and limits.

S8 Duration of Pause for Comma Dial Modifier

- This register determines the number of seconds to pause for each comma (,) in a dial string or command line. The default is **2 seconds**, but any value from zero to 65 is acceptable. Defaults and limits are country-specific.

S10 Delay Between Lost Carrier/Hang Up

- This register specifies the time (in tenths of a second) that the modem waits after carrier loss before hanging up. The default is **20** (2.0 seconds). Register **S10** will accept a value ranging from 1 to 254 in tenths of a second (0.1 to 25.4 seconds). There may be country-specific defaults and limits.

S11 DTMF Tone Duration

- This register determines the "touch tone" dialing speed which is prefixed for each country. The value can range from 50 to 150 milliseconds. The default is **95 milliseconds**. The value of register **S11** has no effect on pulse dialing. There may be country-specific defaults and limits.

S12 Escape Guard Time

- This register sets the value (in 20 ms increments) of the required pause after the escape sequence. Range is 0 = 255, default is 50 units of 0.02 seconds each, or one second.

S28 V.34 Modulation Enable/Disable

- This register enables or disables V.34 modulation. Default setting is 1, valid values are 0 or 1. A value of zero disables V.34 modulation. Any other value in the range enables it.

S30 Inactivity Timer

- The value specified by this register sets how long the modem will wait (in minutes) before disconnecting when no data is sent or received. This function is only applicable in buffer mode. It is set by AT\Tn. Values are 0-255. Default is 0 (disabled).

S34 DTE Throughput Limit

- This register specifies whether the modem should limit throughput when the DTE is operating at higher speeds (57,600 or 115,200bps)

S34=0	Do not limit throughput (default).
S34=1	Limit throughput to DTE speed.

S35 Data Calling Tone

- This register enables or disables a tone of a certain frequency and cadence as specified in V.25 that allows remote data/fax/voice discrimination. It is set by AT-Cn. The frequency is 1300 Hz with a cadence of 0.5 seconds on and 2 seconds off. The default is country-specific. Some countries do not allow data calling tone to be overridden.

S35=0	Data calling tone disabled (default).
S35=1	Data calling tone enabled.

S36 Negotiation Fallback

- This register specifies the action to be taken in the event of a negotiation failure when error control is selected.

S36=0,2	Hang up
S36=1,3	Fall back to an asynchronous connection
S36=4,6	Attempt MNP. If MNP fails, hang up.
S36=5,7	Attempt MNP. If MNP fails, fall back to an asynchronous connection.

S37 Dial Line Rate

S37=0	Maximum modem speed (default).
S37=1	Reserved.
S37=2	1200/75bps.
S37=3	300bps.
S37=4	Reserved.
S37=5	Attempt to connect at 1200bps.
S37=6	Attempt to connect at 2400bps.
S37=7	Attempt to connect at 4800bps.
S37=8	Attempt to connect at 7200bps.
S37=9	Attempt to connect at 9600bps.

S37=10	Attempt to connect at 12000bps.
S37=11	Attempt to connect at 14400bps.
S37=12	Attempt to connect at 16800bps.
S37=13	Attempt to connect at 19200bps.
S37=14	Attempt to connect at 21600bps.
S37=15	Attempt to connect at 24000bps.
S37=16	Attempt to connect at 26400bps.
S37=17	Attempt to connect at 28800bps.
S37=18	Attempt to connect at 31000bps.
S37=19	Attempt to connect at 33600bps.

S40 ETC Startup Autorating

S40=0	Start up with normal autorating (default)
S40=1	Start up at initial rate of 4800 or below
S40=2	Start up at initial rate of 9600 or below

S42 Auto Rate

- V.32bis and V.22bis auto rate is disabled. Retrain operation is disabled or enabled in date mode, and fallback is disabled in data mode.

S42=0	Auto rate disabled.
S42=1	Auto rate enabled (default).

S43 Auto Mode

- V.32bis startup auto mode operation disabled.

S43=0	Auto mode disabled.
S43=1	Auto mode enabled (default).

S46 Data Compression Selection

- The setting of this register is used to turn data compression on or off. It is set by AT%Cn. Data compression can only be enabled when the modem is operating in an error-control (EC) mode using either V.42 LAP-M or MNP protocols.

S46=0	Modem will not attempt negotiation for data compression
S46=2	Modem will negotiate with a remote modem for data compression (default)
S46=136	Same as S46=0
S46=138	Same as S46=2

S48 LAPM Error Control and Feature Negotiation

S48=7	Negotiation enabled.
S48=128	Negotiation disabled; forces immediate fallback options specified in S36.

The following table shows the S36 and S48 configuration settings needed to negotiate certain types of connections.

	S48=7	S48=128
S36=0,2	LAPM or hangup	<Do not use
S36=1,3	LAPM or buffered	Buffered
S36=4,6	LAPM, MNP, or hangup	MNP or hangup
S36=5,7	LAPM, MNP, or buffered	MNP or buffered

S89 Timer to Control Sleep Mode

- This register displays the number of seconds of inactivity (no characters sent from DTE, no RING) in the off-line command state before the modem places itself into standby mode. A value of zero prevents standby mode. Default is 30. Range is 0 and 5 - 65.

S91 Line Transmit Level

- This register specifies the line transmit level, in dB, with an implied minus sign. Default is 15 dB, range is 6 - 15.

S92 Direct Connect Transmit Level

- This register sets the transmit level, in dBm, for direct connect cellular. This value may have different settings for different phones. Default is 0 dBm.

S95 Negotiation Message Options

- This register enables various result codes indicating the sequence of events in an error-controlled connection. This S-Register does not affect the way the connection is negotiated, it just enables extended messages.

S95=0	Disables extended result code messages.
S95=1	Use DCE (modem-to-modem) speed when reporting CONNECT result codes.
S95=2	Append "/ARQ" to CONNECT result code when an error-controlled (EC) connection is established.
S95=4	Enable CARRIER result codes.
S95=8	Enable PROTOCOL result codes.
S95=32	Enable COMPRESSION result codes.

S98 Cable Detection Options

- This register controls the automatic detection and reporting of changes in the cable or alternative connector attached to the modem.

S98=0	Disables cable detection and reporting.
S98=1	Enable cable detection; disable reporting.
S98=2	Enable cable detection and reporting.

S109 V.90 or K56flex Operation

- This register controls the automatic detection or forced setting of V.90 or K56flex standards for operation at up to 56Kbps.

Xircom firmware for current 56K modem products includes support for the V.90 56K modem standard. This firmware is designed to initially attempt to make a V.90 connection, then fall back to K56flex if the host being dialed does not support V.90. However, the host being dialed must support V.90 autodetect in order for a V.90 connection to be initiated by default. If the V.90 host you are calling does not support autodetect, it will be necessary to issue an `ATS109=2` command to the modem in order to force a V.90 connection. If this command is used and a V.90 connection is still not achieved, the modem will fall back directly to V.34 (when `S109=2`, fallback from V.90 to K56flex is disabled). To set this value back to the default, issue `ATS109=1`.

S98=0	Forces K56flex; fallback to V.34.
S98=1	Negotiates V.90 initially if host supports V.90 autodetect; negotiates fallback to K56flex if V.90 autodetect or V.90 is not supported.
S98=2	Forces V.90 for PCM connects; if host does not support V.90, falls back directly to V.34.

How to Set S109

- To change the value of the S109 register with a terminal emulation program (such as Hyperterminal), enter `ATS109=n` (where n is 0, 1, or 2) in modem command mode.
- To change the value of the S109 register with Windows 95, 98, or NT Dial-Up Networking, go to Control Panel, Modems, highlight the Xircom modem and click Properties. Click Connections/Advanced. Enter `S109=n` (where n is 0, 1, or 2) in the Extra Settings box.

Modem Result Codes

The following list details modem result codes that appear after the executing of a modem AT commands.

Modem Result Codes

Long	Short	Description
OK	0	Command successfully executed
CONNECT	1	Modem connected to line
RING	2	Incoming ring signal detected
NO CARRIER	3	Carrier detect failed/carrier dropped
ERROR	4	Command is invalid
NO DIALTONE	6	No tone during interval set with S6
BUSY	7	Busy signal detected
NO ANSWER	8	Remote end never answered
CONNECT 2400 EC*	10	Connection at 2400 bit/s
CONNECT 4800 EC*	11	Connection at 4800 bit/s
CONNECT 9600 EC*	12	Connection at 9600 bit/s
CONNECT 14400 EC*	13	Connection at 14400 bit/s
CONNECT 19200 EC*	14	Connection at 19200 bit/s
CONNECT 7200 EC*	24	Connection at 7200 bit/s
CONNECT 12000 EC*	25	Connection at 12000 bit/s
CONNECT 16800 EC*	86	Connection at 16800 bit/s
CONNECT 300 EC*	40	Connection at 300 bit/s
CONNECT 21600 EC*	55	Connection at 21600 bit/s
CONNECT 24000 EC*	56	Connection at 24000 bit/s
CONNECT 26400 EC*	57	Connection at 26400 bit/s
CONNECT 28800 EC*	58	Connection at 28800 bit/s
CONNECT 31200 EC*	59	Connection at 31200 bit/s
CONNECT 33600 EC*	60	Connection at 33600 bit/s
CONNECT 38400 EC*	28	Connection at 38400 bit/s (DTE rate)
CONNECT 57600 EC*	18	Connection at 57600 bit/s (DTE rate)
CONNECT 115200 EC*	87	Connection at 115200 bit/s (DTE rate)
DELAYED	88	Delay in effect for dialed number
BLACKLISTED	89	Dialed number is blacklisted
BLACKLIST FULL	90	Blacklist is full
CONNECT 32000 EC*	70	Connection at 32000 bit/s (K56flex mode) or V.90
CONNECT 34000 EC*	71	Connection at 34000 bit/s (K56flex mode)
CONNECT 36000 EC*	72	Connection at 36000 bit/s (K56flex mode) or V.90
CONNECT 38000 EC*	73	Connection at 38000 bit/s (K56flex mode)
CONNECT 40000 EC*	74	Connection at 40000 bit/s (K56flex mode) or V.90

CONNECT 42000 EC*	75	Connection at 42000 bit/s (K56flex mode)
CONNECT 44000 EC*	76	Connection at 44000 bit/s (K56flex mode) or V.90
CONNECT 46000 EC*	77	Connection at 46000 bit/s (K56flex mode)
CONNECT 48000 EC*	78	Connection at 48000 bit/s (K56flex mode) or V.90
CONNECT 50000 EC*	79	Connection at 50000 bit/s (K56flex mode)
CONNECT 52000 EC*	80	Connection at 52000 bit/s (K56flex mode) or V.90
CONNECT 54000 EC*	81	Connection at 54000 bit/s (K56flex mode)
CONNECT 56000 EC*	82	Connection at 56000 bit/s (K56flex mode)
CONNECT 28000 EC*	100	Connection at 28000 bit/s (V.90 mode)
CONNECT 29333 EC*	101	Connection at 29333 bit/s (V.90 mode)
CONNECT 30666 EC*	102	Connection at 30666 bit/s (V.90 mode)
CONNECT 33333 EC*	103	Connection at 33333 bit/s (V.90 mode)
CONNECT 34666 EC*	104	Connection at 34666 bit/s (V.90 mode)
CONNECT 37333 EC*	105	Connection at 37333 bit/s (V.90 mode)
CONNECT 38666 EC*	106	Connection at 38666 bit/s (V.90 mode)
CONNECT 41333 EC*	107	Connection at 41333 bit/s (V.90 mode)
CONNECT 42666 EC*	108	Connection at 42666 bit/s (V.90 mode)
CONNECT 45333 EC*	109	Connection at 45333 bit/s (V.90 mode)
CONNECT 46666 EC*	110	Connection at 46666 bit/s (V.90 mode)
CONNECT 49333 EC*	111	Connection at 49333 bit/s (V.90 mode)
CONNECT 50666 EC*	112	Connection at 50666 bit/s (V.90 mode)
CONNECT 53333 EC*	113	Connection at 53333 bit/s (V.90 mode)
CONNECT 54666 EC*	114	Connection at 54666 bit/s (V.90 mode)

* EC only appears when the extended result codes configuration option is enabled. EC is replaced by one of the following symbols, depending on the error control method used:

V42bis - V.42 error control and V.42bis data compression.

V42 - V.42 error control only.

MNP5 - MNP class 4 error control and MNP class 5 data compression.

MNP 4 - MNP class 4 error control only.

NoEC - No error control protocol

Appendix B

Specifications

Wireless Ethernet Mini PCI Adapter Specifications

Antenna	Coax connector (Hirose U.FL). Supports on-board dual diversity switch.
Range	11 Mbps @ 100ft to 1 Mbps @ 300ft
Data Rates	11 Mbps, 5.5 Mbps, 2 Mbps, 1 Mbps
Power Consumption	Estimates: TX:350mA, RX:250mA, Sleep:15mA typical
Certifications	Meets FCC Part 15.247, FCC Class B, Canada RSS-139-1, ETSI ETS 300.328 and CE in Europe, and MKK in Japan.
Compatibility	IEEE 802.11b compliant with 128-bit/40-bit WEP encryption IEEE 802.11b compliant with enhanced roaming features
Roaming	IEEE 802.11b compliant with enhanced roaming features
Network Architecture Types	Supports ad hoc peer-to-peer networking communication to wired networks via Wi-Fi compliant access point
Network Standard	IEEE 802.11b
Software	Windows 2000/NT4.0/Me/98SE (Windows XP when available)
Frequency Band	2.400-2.4835 GHz (US, Canada and ETSI); and 2.471-2.497 (Japan).
Wireless Medium	Direct Sequence Spread Spectrum (DSSS) 2.4 GHz ISM Band
Modulation	PSK @ 1Mb; QPSK @ 2Mb; CCK @ 5.5 and 11Mb
Output Power	15 dBm
Voltage	3.3V (+/- 5%)
Receive Sensitivity	-93dBm @ 1Mb; -89dBm @ 2Mb; -87dBm @ 5.5Mb; -83dBm @ 11Mb
Operating Temperature	0°C to 75°C
Humidity (non-condensing)	95%
Dimensions	2.65 in x 1.65 in x 0.24 in (6.72 cm x 4.2 cm x 0.60 cm)
Weight	.039 kg. (1.4 oz.)
ESD	15kV (human body model)
Channeling	1 MHz increments Programmable for IEEE 802.11

V.90 Modem Specifications

Data modulation	V.90/K56flex up to 56000 bps; V.34 from 33,600 down to 2400 bps; V.32terbo at 19200 and 16800 bps; V.32bis at 14400, 12000, 9600, and 7200 bps, uncoded at 4800 bps; V.32 at 9600 bps, uncoded at 4800 bps; V.23 at 1200/75 and 75/1200 bps; V.22bis at 2400 bps; V.22 at 1200 bps; Bell 212A at 1200 bps
Fax modulation	V.17 at 14400, 12000, 9600, 7200, and 4800 bps; V.29 at 9600, 7200, and 4800 bps; V.27ter at 4800 and 2400 bps
Fax support	Group 3, EIA/TIA Class 1
Error control	V.42 Error Control, MNP Levels 2-4 Error Detection
Data compression	V.42bis (4:1) or MNP Level 5 (2:1)
Diagnostics	Power-up self tests of program RAM, data RAM, and nonvolatile memory
Nonvolatile RAM	1 user definable profile; 2 thirty-six digit telephone numbers; LAN Adapter ID and serial number
Command set	Hayes and Microcom compatible AT commands
Analog interface	RJ-11C modular telephone connector
DTE speeds	1200, 2400, 4800, 7200, 9600, 14400, 19200, 37400, 57600, and 115200 bps

Appendix C

Technical Support and Warranty

Technical Support

Xircom offers an extensive family of service and support programs, including world-class phone support, software updates, and 24-hour access to Technical Support on the Xircom Web site.

Warranty Service Procedures

For details on warranty coverage and service, see the Lifetime Limited Warranty. If you think there is a problem or defect with your Xircom product, your point of contact will be:

In the U.S.A.

Xircom's Technical Support department at (805) 376-9200.

Outside the U.S.A.

Contact your local Xircom supplier or Xircom regional office.

Software and Driver Updates

To download drivers (subject to the terms of the Xircom Software License Agreement), click Download on the Xircom Web site at

www.xircom.com

Xircom Worldwide Access

Americas Technical Support

Xircom, Inc.
2300 Corporate Center Drive
Thousand Oaks, California 91320-1420
(805) 376-9200 Technical Support
(5 a.m. to 5 p.m. Monday through Friday U.S. Pacific time)
(805) 376-9100 Fax to Technical Support
www.xircom.com Technical Support Online

Europe, Middle East, and Africa Technical Support

Xircom Europe

Veldkant 31
2550 Kontich, Belgium
Direct Line to Technical Support
+32/(0)70 233 307 Telephone English language
+32/(0)70 233 852 Telephone Dutch language
+32/(0)70 233 851 Telephone French language
+32/(0)70 233 850 Telephone German language
+32/(0)70 233 376 Telephone Italian language
+32/(0)70 233 467 Telephone Spanish language
+32/(0)70 233 468 Telephone Swedish language
(9:00 to 18:00 Monday through Friday Central European Time)
+32/(0)70 233 306 Fax to Technical Support
www.xircom.com Technical Support Online

Asia Pacific Technical Support

Xircom Asia Pacific
1 Kim Seng Promenade #15-01
Great World City East Tower
Singapore 237994
+65 732 5001
+65 732 2245 Technical Support
+65 732 5002 Fax
www.xircom.com Technical Support Online
+61(0)2 8923 7090 Technical Support (Australia/New Zealand)
+61(0)2 8923 7099 Fax (Australia/New Zealand)
www.xircom.com Technical Support Online

Japan Technical Support

Xircom Japan
TOHTAM Building 2F
3-10-5 Shibuya, Shibuya-ku
Tokyo 150-0002 Japan
+81(0)3 3407 1900 Technical Support
+81(0)3 3407 0180 Fax
www.xircom.co.jp Technical Support Online

Warranty

As the original purchaser, you receive these warranties from Xircom:

Hardware

Your Wireless Ethernet + Modem Mini PCI Adapter (collectively, “Products”), will be free from defects in material and workmanship and will perform in substantial compliance with your user documentation accompanying the Products for as long as you own and properly use the Products.

Software

Software accompanying these Products (including driver, utility software, etc.) and the magnetic media containing the software are warranted to perform in substantial compliance with the specifications contained in your user documentation for two years from your purchase date. Our warranty does not cover or provide you with rights to upgrades or updates.

You are responsible for your choice of applications programs or related reference materials. Given the wide range of third party hardware and applications software products you might use our software with, you understand that Xircom does not warrant the compatibility or the uninterrupted or error free operation of our software.

Upon our confirmation of a covered defect or failure, at our option we will repair or replace the affected item or will refund your purchase price if repair or replacement is not possible or practical. At our option, replacement products or repaired items may be a new, refurbished, or functionally equivalent item. Our warranty on items serviced under warranty will be lifetime for **hardware** and, for **software**, 90 days from return to you of software/magnetic media or the remainder of the original warranty, whichever is longer. Repair, replacement, or refund are the exclusive remedies available to you from Xircom for products and software.

Your Obligations

Your warranty rights will be honored provided you

- 1 Read and follow your user documentation for installation, setup, software setup, and operating guidelines,
- 2 Use the Products and software only in suitable physical or operating environments as described in your user documentation and for purposes for which the Products and software are intended.

Warranty Service

If you think there is a problem or defect with your purchased item, please contact your PC vendor or manufacturer.

Limitations

Our warranty is subject to the following limitations:

- a** We do not cover or accept liability for any injury, damage or failure caused by misuse, abuse, acts of Nature, accidents (e.g., dropping the Products or software diskettes), electrical mishaps, causes beyond our control, or claims by other than the original purchaser.
- b** We will not honor, and will consider our warranty voided, if there has been any (1) tampering with the Product's external label or serial number, (2) attempt to open the Product's case, or (3) attempted or actual repair by anyone other than an authorized Xircom technician.

Disclaimer

THIS LIMITED WARRANTY IS THE ONLY WARRANTY WE MAKE FOR THE PRODUCT AND SOFTWARE. TO THE EXTENT ALLOWED BY LAW, NO OTHER WARRANTY APPLIES, WHETHER EXPRESS, IMPLIED, OR STATUTORY, INCLUDING ANY WARRANTY OF MERCHANTABILITY, OF FITNESS FOR A PARTICULAR PURPOSE, OR OF NON-INFRINGEMENT. XIRCOM WILL NOT BE LIABLE OR RESPONSIBLE FOR ANY INCIDENTAL, CONSEQUENTIAL, OR SPECIAL DAMAGES (e.g., LOST PROFITS, LOSS OF OR DAMAGE TO ANY COMPUTER EQUIPMENT OR RELATED DATA).

Additional Rights

Some states or countries do not allow exclusion or limitation of incidental or consequential damages, or limitations on the length of an implied warranty, so the above limitations or exclusions may not apply to you. Our warranty gives you specific legal rights, and you may also have other rights which vary from state to state or country to country.

International Notice

Due to differing national regulations and approval requirements, certain Xircom products are designed for use only in specific countries, and may not function properly in a country other than the country of designated use. As a user of these products, you are responsible for ensuring that the products are used only in the countries for which they were intended.

Unauthorized Applications

Xircom's products are not designed or authorized for use as a component in any life support, life safety, or other comparable application. Our products should not be used in any application where the failure or faulty performance of the product might create a risk of personal injury or death. Buyer assumes all risk of loss, damage or injury alleged to arise from the failure or faulty performance of a Xircom product in any unauthorized application. Buyer agrees to indemnify and hold harmless Xircom, and its officers, directors, employees, agents, representatives, and sales partners, from and against any and all claims, costs, damages, losses and expenses (including reasonable attorney fees) which arise from or are alleged to have been caused by any claim for personal injury or death connected with Buyer's use of a Xircom product in any unauthorized application, including claims which allege that Xircom has been negligent in connection with the design or manufacture of the product.

Appendix D

Regulatory and Safety Notices

Wireless Ethernet + V.92 Modem Mini PCI Adapter Regulatory and Safety Notices Safety Notices



Caution: To reduce the risk of fire, use only No. 26 AWG or larger tele-communication line cord. This card is intended for use with UL 60950/EN60950/IEC60950 (or other NRTL) listed ITE computers that contain operator accessible Type 3A Mini PCI card slots.

Care should be taken to avoid damaging the insulation tape on the Xircom Mini PCI Wireless Ethernet + V.92 Modem models M3AWEB and M3AWEB56GA. Do not cut, tear, pierce or remove the insulation tape.

FCC Regulations - Part 15 Declaration of Conformity (DoC)

Xircom, Inc. declares that the equipment described in this document is within the requirements of the Code of Federal Regulations listed below:

Title 47 Part 15, Subpart B, Class B for a digital device.

This declaration is based upon compliance of the Xircom Mini PCI Wireless Ethernet + Modem models M3AWEB and M3AWEB56GA to the above standards. Xircom has determined that these models have shown to comply with the applicable technical standards if no unauthorized change is made in the equipment and if the equipment is properly maintained and operated.

These units are identical to the units tested and found acceptable with the applicable standards. Records maintained by Xircom continue to reflect that units being produced under this Declaration of Conformity, within the variation that can be expected due to quantity production and tested on a statistical basis, continue to comply with the applicable technical standards.

R.W. Bass, Vice President, Operations, Xircom, Inc., 2300 Corporate Center Drive, Thousand Oaks, California 91320 U.S.A.

Federal Communications Commission Information for the User

This device complies with Part 15 rules. Operation is subject to the following two conditions:

1. This device may not cause harmful interference, and
2. This device must accept any interference received, including interference that may cause undesired operation.

This equipment has been tested and found to comply with the limits of a Class B digital device, pursuant to Part 15 of the FCC Rules. These limits are designed to provide reasonable protection against harmful interference when the equipment is operated in a residential environment. This equipment generates, uses, and radiates radio frequency energy, and if not installed and used in accordance with the instructions, may cause harmful interference. However, there is no guarantee that interference will not occur. If this equipment does cause interference to radio or television reception, which can be determined by turning the equipment on and off, the user is encouraged to correct the interference by one of the following measures:

- Reorient or relocate the receiving antenna.
- Increase separation between the equipment and receiver.
- Connect the equipment into an outlet on a circuit different from which the receiver is connected.
- Consult the dealer or an experienced radio/TV technician.

CAUTION: The Part 15 radio device operates on a non-interference basis with other devices operating at this frequency. Any changes or modification to said product not expressly approved by Xircom could void the user's authority to operate this device.

CAUTION: To reduce risk of fire, use only No. 26 AWG or larger telecommunication line cord. This card is intended for use with UL 1950/EN60950/IEC60950 (or other NRTL) listed ITE computers that contain operator-accessible PC Card slots.

Proper operation of this radio according to the instructions found in this online user guide will result in user exposure that is substantially below the FCC recommended limits.

- Do not touch or move antenna while the unit is transmitting or receiving.
- Do not hold any component containing the radio such that the antenna is very close or touching any exposed parts of the body, especially the face or eyes, while transmitting.
- Do not operate a portable transmitter near unshielded blasting caps or in an explosive environment unless it is a type especially qualified for such use.
- Do not operate the radio or attempt to transmit data unless the antenna is connected; if not, the radio may be damaged.

Warning for laptop users: In order to comply with the FCC RF exposure limits, it is recommended, when using a laptop with a wireless Ethernet adapter, that the adapter's integrated antenna should not be positioned closer than 2 inches (5 cm) from your body or nearby persons for extended periods of time while it is transmitting (or operating). If the antenna is positioned less than 2 inches (5 cm) from the user, it is recommended that user exposure time be limited.

Explosive Device Proximity Warning

Warning: Do not operate your wireless network device near unshielded blasting caps or in an explosive environment unless the device has been modified to be especially qualified for such use.

FCC Regulations - Part 68

To comply with the Federal Communications Commission (FCC) Rules and Regulations, Parts 68, these instructions must be followed:

1. Your modem must not be connected to a party line or coin-operated telephone.
2. If a problem occurs on the telephone line, your modem must be disconnected from the telephone line until it has been determined that your modem is not the cause of the problem.
3. All repairs to your modem must be made by Xircom, Inc. Unauthorized or unorthodox repair methods can alter the modem's radio frequency emissions and other characteristics sufficiently to void your authority to operate the modem over a public telephone network.
4. If requested, you must be prepared to provide the telephone company with the following information:
Equipment Manufacturer: Xircom, Inc.
2300 Corporate Center Drive
Thousand Oaks, CA 91320-1420 U.S.A.
Model: M3AWEB56GA
FCC Registration Number: See the unit.
Ringer Equivalency No.: See the unit.

This equipment complies with Part 68 of the FCC Rules. On the back of the unit is a label that contains, among other information, the FCC Registration Number and Ringer Equivalency Number (REN) for this equipment. You must, upon request, provide this information to your telephone company.

This equipment uses the following USOC jacks: RJ-11.

An FCC compliant telephone cord and modular plug are provided with this equipment. This equipment is designed to be connected to the telephone network or premises wiring using a compatible modular jack which is Part 68 compliant. See installation instructions for details.

The REN is useful to determine the quantity of devices you may connect to your telephone line and still have all those devices ring when your telephone number is called. In most but not all areas, the sum of the RENs of all devices connected to one line should not exceed five (5.0). To be certain of the number of devices you may connect to your line, as determined by the REN, you should contact your local telephone company to determine the maximum REN for your calling area.

If the Xircom terminal equipment causes harm to the telephone network, the telephone company may discontinue your service temporarily. If possible, they will notify you in advance. But if advance notice is not practical, you will be notified as soon as possible. You will be informed of your right to file a complaint with the FCC.

The telephone company may make changes in its facilities, equipment, operations or procedures that could affect the operation of the equipment. If this happens, the telephone company will provide advance notice in order for you to make necessary modifications to maintain uninterrupted service.

If you experience trouble with this telephone equipment, please contact Xircom, Inc. at (805) 376-9200 for information on obtaining service or repairs. If the equipment is causing harm to the telephone network, the telephone company may request you to disconnect the equipment until the problem is resolved.

There are no user serviceable parts contained in this equipment.

This equipment may not be used on public coin phone service provided by the telephone company. Connection to party line service is subject to state tariffs.

The Telephone Consumer Protection Act of 1991 makes it unlawful for any person to use a computer or other electronic device, including fax machines, to send any message unless such message clearly contains in a margin at the top or bottom of each transmitted page or on the first page of the transmission, the date and time it is sent and an identification of the business or other entity, or other individual sending the message and the telephone number of the sending machine or such business, other entity, or individual. (The telephone number provided may not be a 900 number or any other for which charges exceed local or long-distance transmission charges.)

In order to program this information into your fax software, you should refer to the manual of the fax software being used.

Canadian Department of Communications Industry Canada (IC) Notice

This digital apparatus does not exceed the Class B limits for radio noise emissions from digital apparatus set out in the Radio Interference Regulations of the Canadian Department of Communications.

Le présent appareil numérique n'émet pas de bruits radioélectriques dépassant les limites applicables aux appareils numériques de Classe B prescrites dans le règlement sur le brouillage radioélectrique édicté par le Ministère des Communications du Canada.

This device complies with Class B Limits of Industry Canada. Operation is subject to the following two conditions:

1. This device may not cause harmful interference, and
2. This device must accept any interference received, including interference that may cause undesired operation.

The device is certified to the requirements of RSS-139-1 and RSS-210 for 2.4 GHz spread spectrum devices. The use of this device in a system operating either partially or completely outdoors may require the user to obtain a license for the system according to the Canadian regulations. For further information, contact your local Industry Canada office.

NOTICE: The Industry Canada (IC) label identifies certified equipment. This certification means that the equipment meets telecommunications network protective, operational and safety requirements as prescribed in the appropriate Terminal Equipment Technical Requirements document(s). The department does not guarantee the equipment will operate to the user's satisfaction.

Before installing this equipment, users should ensure that it is permissible to be connected to the facilities of the local telecommunications company. The equipment must also be installed using an acceptable method of connection. The customer should be aware that compliance with the above conditions may not prevent degradation of service in some situations.

Repairs to certified equipment should be coordinated by a representative designated by the supplier. Any repairs or alterations made by a user to this equipment, or equipment malfunctions, may give the telephone communications company cause to request the user to disconnect the equipment.

Users should ensure for their own protection, that the electrical ground connections of the power utility, telephone lines and internal metallic water pipe system, if present, are connected together. This precaution may be particularly important in rural areas.

Caution: Users should not attempt to make such connections themselves, but should contact the appropriate electric inspection authority, or electrician, as appropriate.

NOTICE: The Ringer Equivalence Number (REN) assigned to each terminal device provides an indication of the maximum number of terminals allowed to be connected to a telephone interface. The termination on an interface may consist of any combination of devices subject only to the requirement that the sum of the Ringer Equivalence Numbers of all the devices does not exceed 5.

REN: See back of unit.

Warranty and Repair Service Center:

Xircom, Inc.
2300 Corporate Center Drive
Thousand Oaks, CA 91320-1420 U.S.A.
Phone: (805) 376-9200

European Community - CE Mark Declaration of Conformity

Xircom, Inc. declares that the equipment described in this document is in conformance with the requirements of the European Council Directive listed below:

73/23/EEC Low Voltage Directive with Amendment 93/68/EEC
89/336/EEC EMC Directive with Amendments 92/31/EEC and 93/68/EEC
1999/5/EC Radio and Telecommunications Terminal Equipment Directive
EN 60950 1992 2nd Edition (A1 - A4, A11) Safety of Information Technology Equipment, Including Electrical Business Equipment

This declaration is based upon compliance of the product to the following standards:

ETS 300 328/A1 (1997-07, Edition 2) Radio Equipment and Systems (RES); wideband transmission systems; technical characteristics and test conditions for data transmission equipment operating in the 2.4 GHz ISM band and using spread spectrum modulation techniques
ETS 300 826 (1997-11, Edition 1) Electromagnetic compatibility and radio spectrum matters (ERM); electromagnetic compatibility (EMC) standard for 2.4 GHz wideband transmission systems and high performance radio local area network (HIPERLAN) equipment

EN 55022 1998 (CISPR 22 Class B) RF Emissions Control
EN 55024 1998 (EN 61000-4-2, 3, 4, 5, 6, 8 & 11) Immunity to Electromagnetic Disturbance

TBR21 Analogue PSTN Standard with Advisory Notes in ETSI Guides EG 201 120 and EG 201 121

Warning: Due to the fact that the frequencies used by 802.11b are not yet harmonized, certain Xircom 802.11b products are designed for use only in specific countries, and may not function properly in a country other than the country of designated use. As a user of these products, you are responsible for ensuring that the products are used only in the countries for which they were intended.

The following bandwidth restrictions are in effect:

France	2446.5 - 2483.5 MHZ
Other EU countries	2400 - 2483.5 MHZ

Product Description: 802.11b Wireless Ethernet + V.92 Modem module model M3AWEB56GA

R.W. Bass, Vice President, Operations, Xircom Europe, Middle East, and Africa, Veldkant 31, 2550 Kontich, Belgium.

Note: These regulations do not affect the worldwide usability features of the Xircom modem, including use on networks of countries outside the European Union.

Compliance Notice

The equipment has been approved in accordance with Council Decision 1999/5/EC on radio equipment and telecommunications terminal equipment and the mutual recognition of their conformity. This device is telecommunications terminal equipment intended to be connected directly to the public telecommunications network (PSTN). However, due to differences between the individual PSTNs provided in different countries, the approval does not, of itself, give an unconditional assurance of successful operation on every PSTN network termination point. In the event of problems, contact your equipment supplier in the first instance.

Network Compatibility Declaration

The manufacturer: Xircom Inc, 2300 Corporate Center Drive Thousand Oaks, California 91320 USA, declares its awareness of the Advisory Notes contained in ETSI Guides EG 201 120 and EG 201 121, including any amendments thereto, and indicates below the networks with which the product model M3AWE56GA is designed to work and any notified networks with which there may be interworking difficulties.

These products are designed to work on PSTNs in the following countries: Austria, Belgium, Denmark, Finland, France, Germany, Greece, Iceland, Ireland, Italy, Luxembourg, Norway, Portugal, Spain, Sweden, Switzerland, The Netherlands, United Kingdom. Use the CountrySelect utility supplied with the product to configure your modem for these countries.

European Union CTR 21 Compliance

For information about compliance of this product with the European Union Common Technical Regulation (CTR) 21 on connection of telecommunications equipment to the public switched telephone network (PSTN), see the insert supplied with the product.



Safety Notices

- ❑ This card is intended for use with UL 60950/EN60950/IEC60950 (or other NTRL) listed ITE computers that contain a Mini PCI type 3A connector.
- ❑ Care should be taken to avoid damaging the insulation tape on the Xircom Wireless Ethernet + Modem Mini PCI Adapter. Do not cut, tear, pierce or remove the insulation tape.
- ❑ (English) CAUTION – To reduce the risk of fire, use only No. 26 AWG or larger telecommunication line cord.

(Français) ATTENTION – Pour réduire le risque d'incendie, utiliser uniquement des conducteurs de télécommunications 26 AWG ou de section supérieure.

European Telecommunication Standards Institute Statement of Compliance

Information to User

This equipment has been tested and found to comply with the European Telecommunications Standard ETS 300.328. This standard covers Wideband Data Transmission Systems referred in CEPT recommendation T/R 10.01.

This type of accepted equipment is designed to provide reasonable protection against harmful interference when the equipment is operated in a commercial environment. This equipment generates, uses, and can radiate radio frequency energy, and if not installed and used in accordance with the instruction manual, may cause harmful interference to radio communications.

Channels

The channel identifiers and the channel center frequencies of each 22-MHz-wide channel are shown in the table below, as appropriate for the various areas or regulatory agencies.

Channel Identifier	Center Frequency	North America	ETSI	France	Japan
1	2412 MHz	X	X	-	X
2	2417 MHz	X	X	-	X
3	2422 MHz	X	X	-	X
4	2427 MHz	X	X	-	X
5	2432 MHz	X	X	-	X
6	2437 MHz	X	X	-	X
7	2442 MHz	X	X	-	X
8	2447 MHz	X	X	-	X
9	2452 MHz	X	X	-	X
10	2457 MHz	X	X	X	X
11	2462 MHz	X	X	X	X
12	2467 MHz	-	X	X	X
13	2472 MHz	-	X	X	X
14	2484 MHz	-	-	-	X

New Zealand Telepermit Compliance Notes

General

The grant of a Telepermit for any item of terminal equipment indicates only that Telecom has accepted that the item complies with minimum conditions for connection to its network. It indicates no endorsement of the product by Telecom, nor does it provide any sort of warranty. Above all, it provides no assurance that any item will work correctly in all respects with another item of Telepermitted equipment of a different make or model, nor does it imply that any product is compatible with all of Telecom's network services.

Important Notice

Under power failure conditions, this telephone may not operate. Please ensure that a separate telephone, not dependent on local power, is available for emergency use.

Some parameters required for compliance with Telecom's Telepermit requirements are dependent on the equipment (PC) associated with this device. The associated equipment shall be set to operate within the following limits for compliance with Telecom's Specification:-

- There shall be no more than 10 call attempts to the same number within any 30 minute period for any single manual call initiation, and
- The equipment shall go on-hook for a period of not less than 30 seconds between the end of one attempt and the beginning of the next attempt.
- Where automatic calls are made to different numbers, the equipment shall go on-line for a period of not less than 5 seconds between the end of one attempt and the beginning of the next attempt.
- The equipment shall be set to ensure that calls are answered between 3 and 30 seconds of receipt of ringing.

Japan Regulatory Notices

TELEC

This equipment has been certified to confirm with the technical regulations of the specified radio equipment under the radio law of Japan. If you open the case to modify the circuit, you may be punished by law.

In the frequency bandwidth of this equipment, industrial device, scientific device, medical device like microwave oven, licensed premises radio station and non-licensed specified low power radio station for mobile object identification system (RF-ID) that is used in product line of factories are used.

1. Please make sure before using this equipment that no premises radio station and no specified low-power radio station of RF-ID are used in the neighborhood.
2. In case that RF interference occurs to licensed premises radio station of RF-ID from this equipment, please change promptly the frequency for use or stop emitting radio, and contact the number below and ask how to deal with it to avoid radio interference, such as setting of partitions.
3. Please contact the number below if you have a problem, such as interference from this equipment to specified low-power radio station of RF-ID. Contact: Xircom Japan Technical Support, 03-3407-1900.

JATE

The JATE approval number of this equipment is pending. See the hardware for the approval number.

Blank Page

Blank Page