



Wi-Fi Mouse Quick Start Guide

1. System requirement:

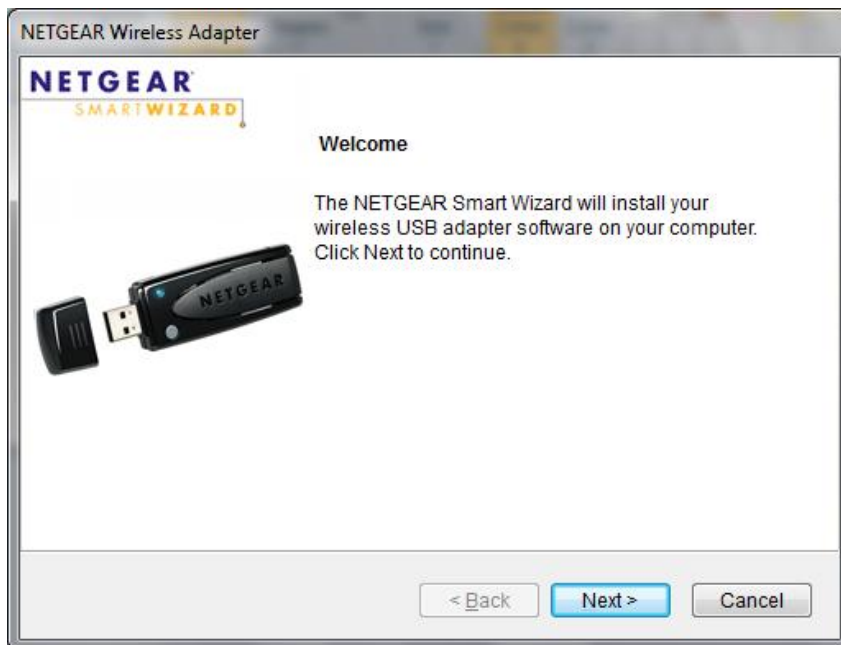
- a. Microsoft Windows 7 Certificate notebook
- b. Microsoft Windows 7 Certificate Wireless dongle running on Win7 notebook.
(ex: NETGEAR WNDA3100v2)
- c. WiFi mouse with FW v02.01.03.000 above.

2. Software

- a. WNDA3100v2_1.2_230-10601-03_setup.exe (This is for WNDA3100v2 wireless card)
- b. Ozmo software PAN driver (WinDriver-1-5-46-0)
- c. Wi-Fi Pairing Utility (Wi-Fi Pair_2011-1-12)

3. Installation steps

- a. Install Wireless Card driver (ex: NETGEAR WNDA3100v2)
 - a.1 – Double-click on the WNDA3100v2_1.2_230-10601-03_setup.exe then click “Next”

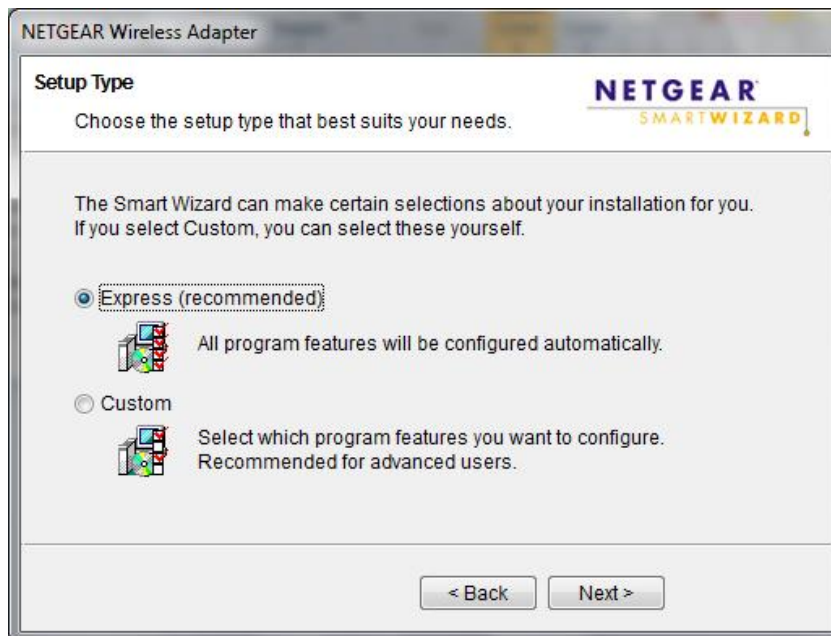




a.2 – Select “I Agree” then Click “Next”



a.3 – Select “Express” then click “Next”





a.4 – Click “Next”

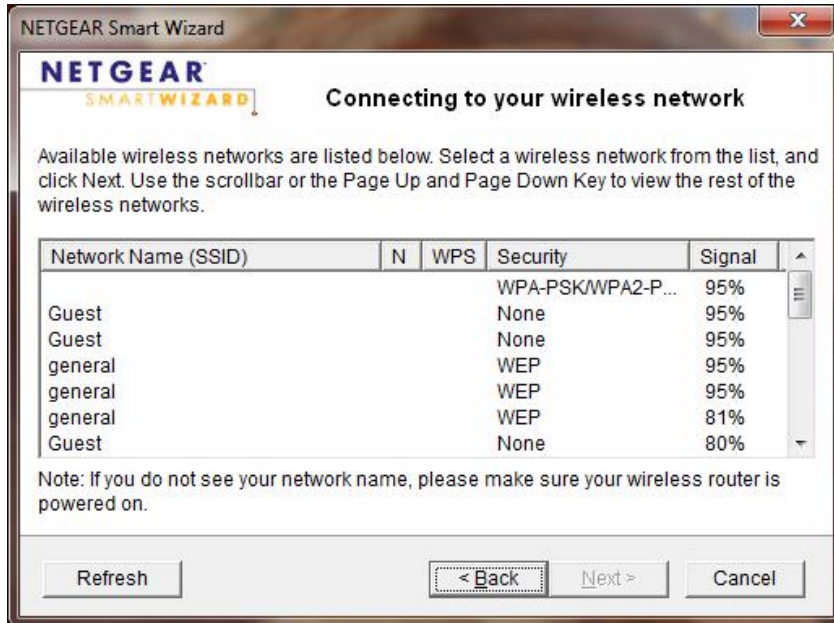


a.5 – Select “No. I do not...” Then click “Next”





a.6 – Click “Next”

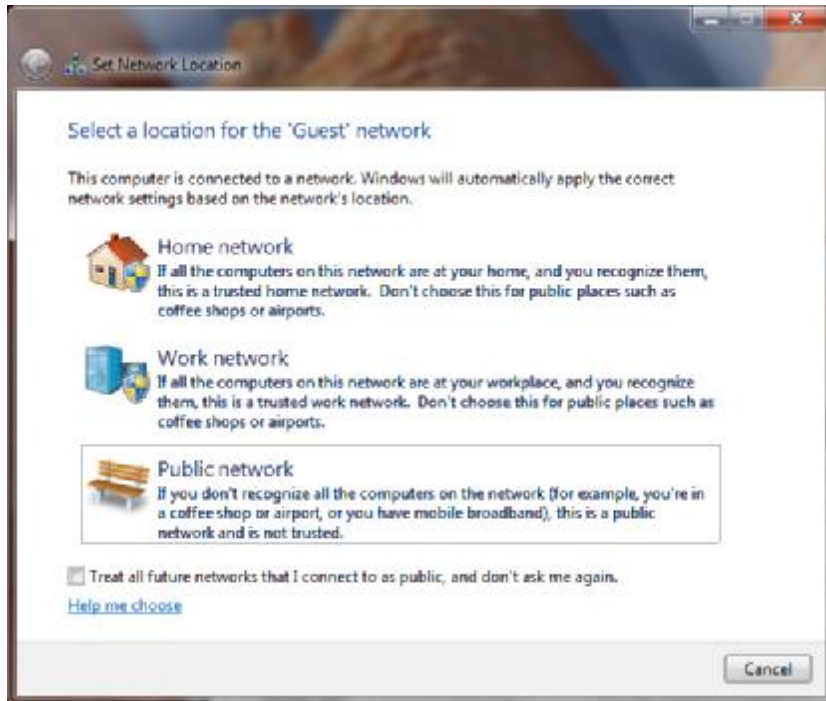


a.7 – Click “Close”





a.8 – Select “Public network”

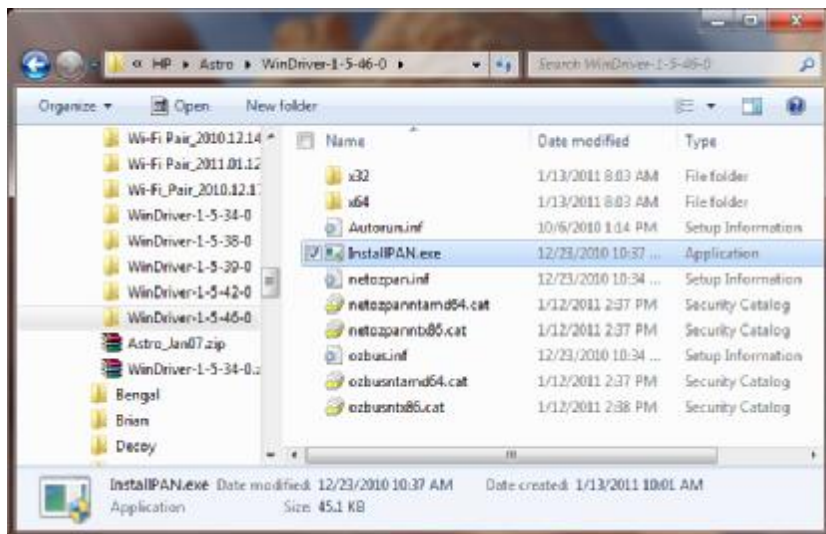


a.9 – WiFi radio is open and connected.



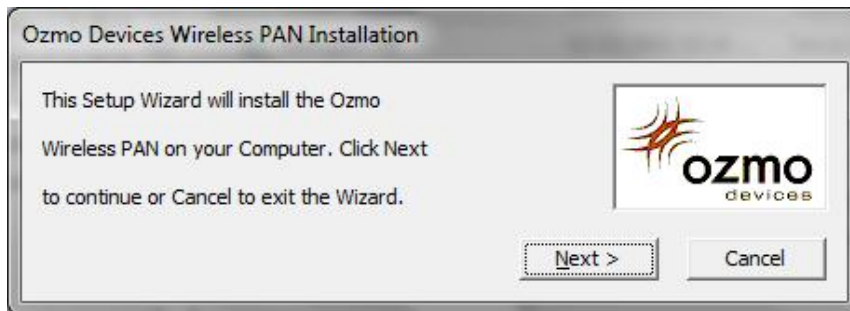
b. Install Ozmo Software PAN

b.1 – Double click on the InstallPAN.exe

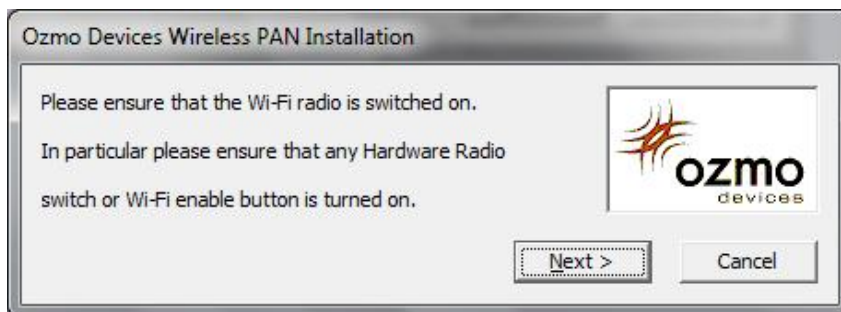




b.2 – Click “Next”



b.3 – Click “Next”



b.4 – If this dialog show up, please click “Install”

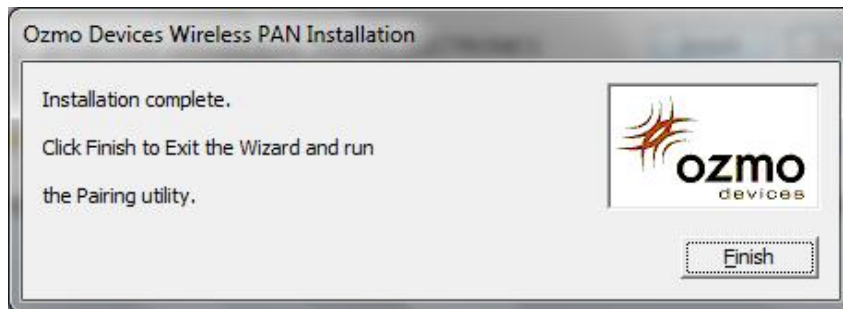


b.5 – If this dialog show up, please click “Install”





b.6 – Click “Finish”

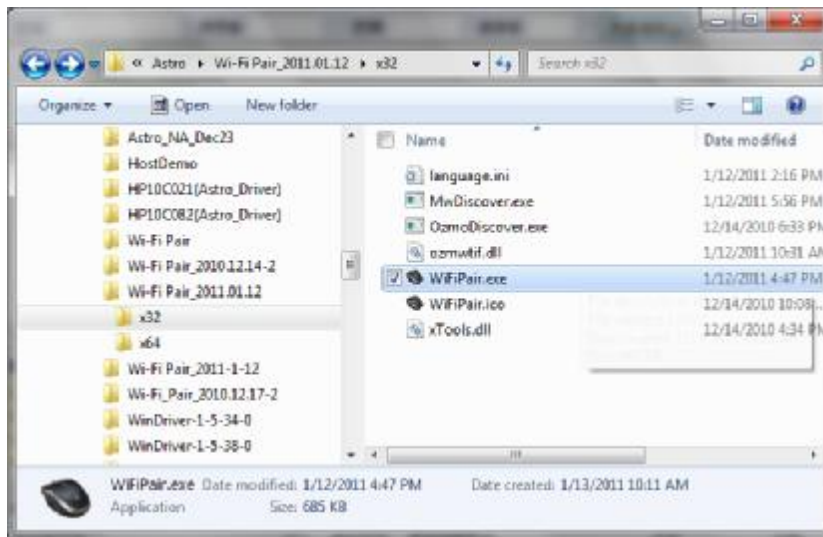


b.7 – Close this window

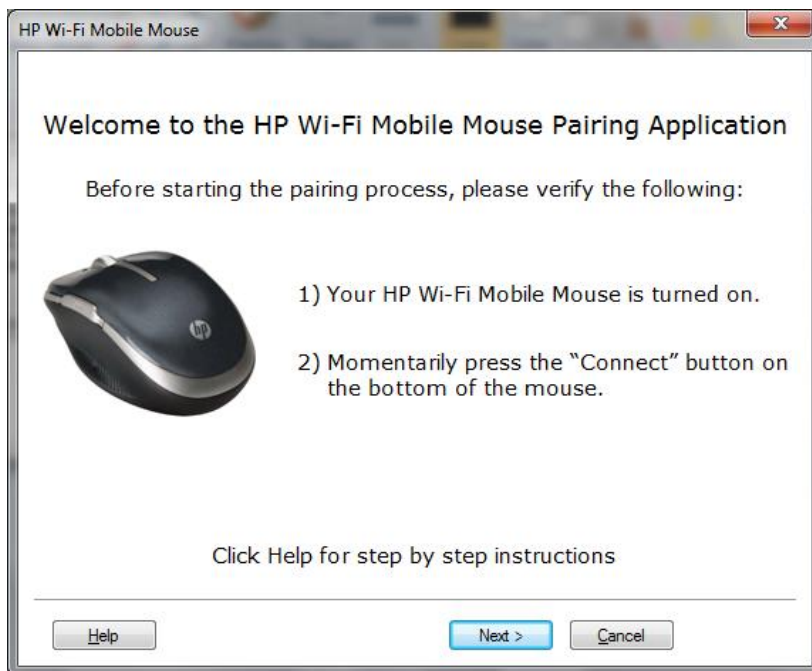


c. Pairing with Wi-Fi mouse

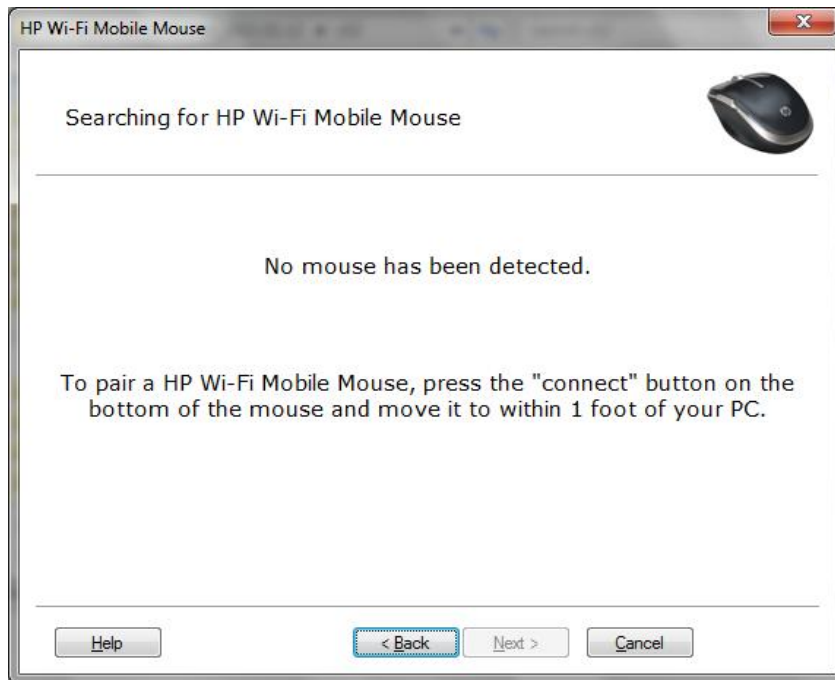
c.1 – Open the Wi-Fi Pairing Wizard by double click on the “WiFiPair.exe”.
(note: if your system is Win7-64bit, please locate to the folder x64)



c.2 – Power on your Wi-Fi mouse and press the “Connect” button on the bottom of the mouse. Then click “Next”

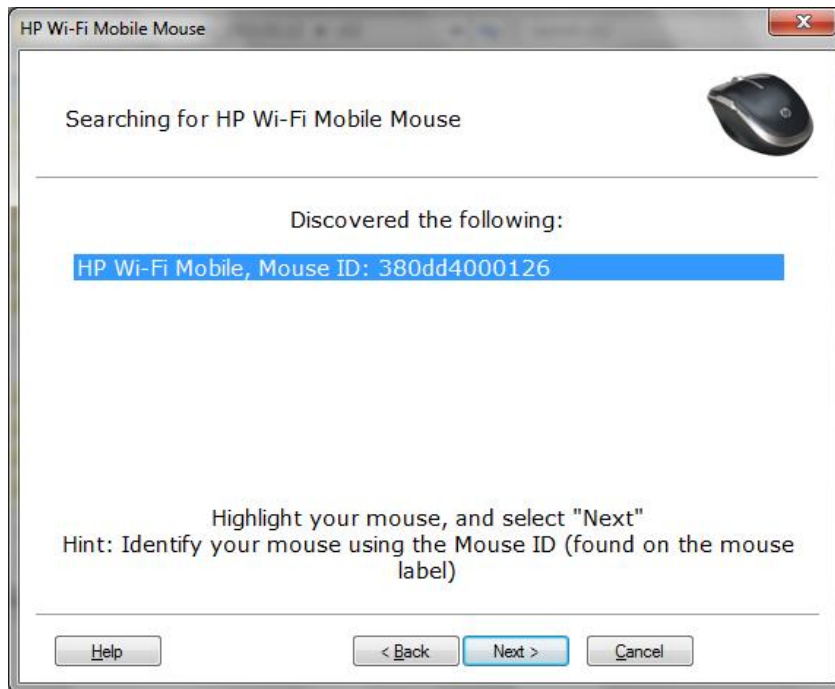


c.3 – Wait for the mouse be detected.

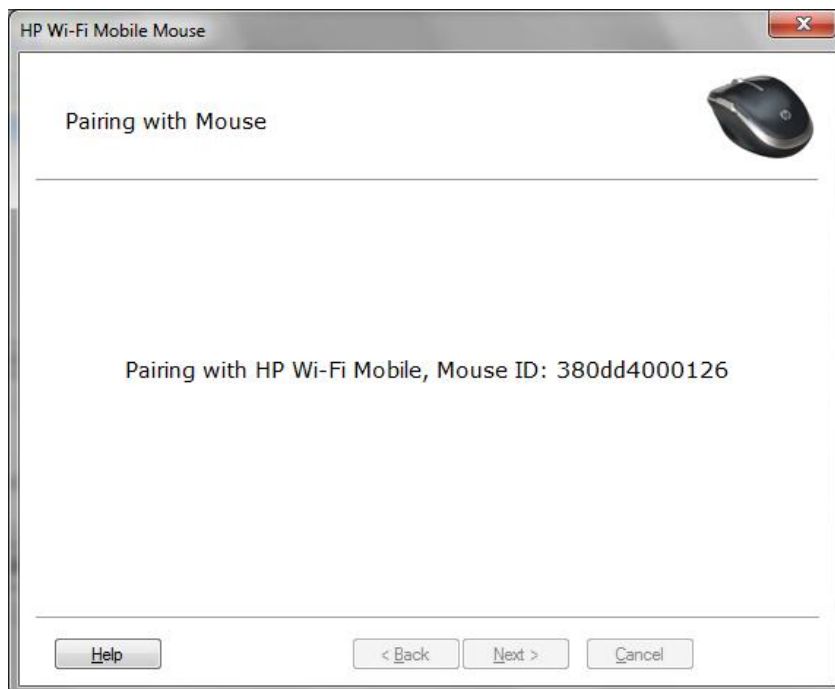




c.4 – Select the mouse which you want to connect with. Then click “Next”

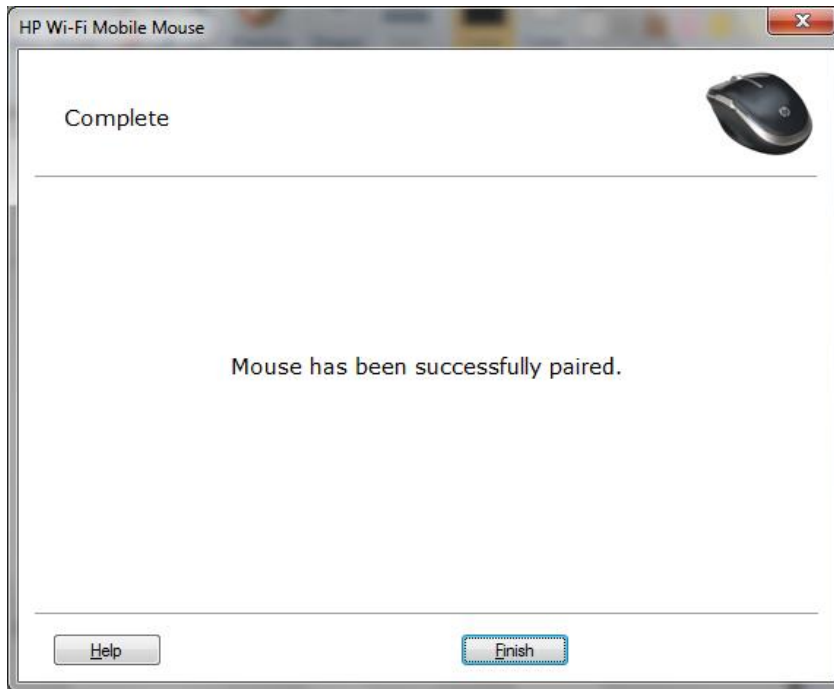


c.5 – Pairing with mouse

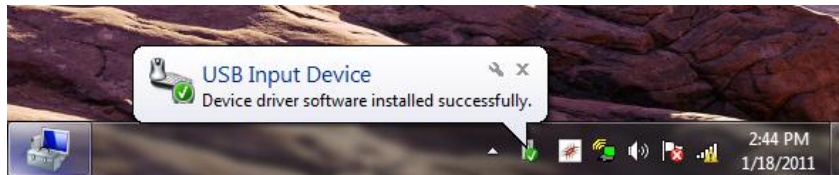




c.6 – Pairing successfully



c.7 – Found new “USB Input Device” and your Wi-Fi mouse is workable now.



Wi-Fi Pair2011-1-12.rar



WinDriver-1-5-46-1.zip



Federal Communication Commission Interference Statement

This equipment has been tested and found to comply with the limits for a Class B digital device, pursuant to Part 15 of the FCC Rules. These limits are designed to provide reasonable protection against harmful interference in a residential installation. This equipment generates, uses and can radiate radio frequency energy and, if not installed and used in accordance with the instructions, may cause harmful interference to radio communications. However, there is no guarantee that interference will not occur in a particular installation. If this equipment does cause harmful interference to radio or television reception, which can be determined by turning the equipment off and on, the user is encouraged to try to correct the interference by one of the following measures:

- Reorient or relocate the receiving antenna.
- Increase the separation between the equipment and receiver.
- Connect the equipment into an outlet on a circuit different from that to which the receiver is connected.
- Consult the dealer or an experienced radio/TV technician for help.

This device complies with Part 15 of the FCC Rules. Operation is subject to the following two conditions: (1) This device may not cause harmful interference, and (2) this device must accept any interference received, including interference that may cause undesired operation.

FCC Caution: Any changes or modifications not expressly approved by the party responsible for compliance could void the user's authority to operate this equipment.

For operation within 5.15 ~ 5.25GHz frequency range, it is restricted to indoor environment, and the antenna of this device must be integral.

IMPORTANT NOTE:

FCC Radiation Exposure Statement:

This equipment complies with US/Canada radiation exposure limits set forth for an uncontrolled environment. This equipment should be installed and operated with minimum distance 20cm between the radiator & your body.

This transmitter must not be co-located or operating in conjunction with any other antenna or transmitter.



IC Statement

Operation is subject to the following two conditions: 1) this device may not cause interference and 2) this device must accept any interference, including interference that may cause undesired operation of the device.

IMPORTANT NOTE:

Radiation Exposure Statement:

This equipment complies with IC radiation exposure limits set forth for an uncontrolled environment. This equipment should be installed and operated with minimum distance 20cm between the radiator & your body.

Caution:

The device for the band 5150-5250 MHz is only for indoor usage to reduce potential for harmful interference to co-channel mobile satellite systems.

Ce dispositif est conforme à la norme CNR-210 d'Industrie Canada applicable aux appareils radio exempts de licence. Son fonctionnement est sujet aux deux conditions suivantes: (1) le dispositif ne doit pas produire de brouillage préjudiciable, et (2) ce dispositif doit accepter tout brouillage reçu, y compris un brouillage susceptible de provoquer un fonctionnement indésirable.

NOTE IMPORTANTE: (Pour l'utilisation de dispositifs mobiles)

Déclaration d'exposition aux radiations:

Cet équipement est conforme aux limites d'exposition aux rayonnements IC établies pour un environnement non contrôlé. Cet équipement doit être installé et utilisé avec un minimum de 20 cm de distance entre la source de rayonnement et votre corps.

les dispositifs fonctionnant dans la bande 5 150-5 250 MHz sont réservés uniquement pour une utilisation à l'intérieur afin de réduire les risques de brouillage préjudiciable aux systèmes de satellites mobiles utilisant les mêmes canaux;