

# D-Link Quick Installation Guide

This product works with the following operating system software: Windows XP, Windows 2000, Windows Me, Windows 98SE

## DWL-G122 2.4GHz USB Wireless Adapter

### Before You Begin

**You must have at least the following for PC Windows Based Computers:**

- You will need a computer with an available USB port to connect the DWL-G122 Wireless USB adapter.
- At least a 300 MHz processor and 32 MB of memory
- An 802.11b/g Access Point or another 802.11b/g wireless adapter (for Ad-Hoc; Peer-to-Peer net working mode.)
- Properly installed and working USB Controller.

### Check Your Package Contents

These are the items included with your DWL-G122 purchase:

- DWL-G122 Wireless USB Adapter
- CD-ROM (containing Drivers, Manual and
- USB Extension Cable

If any of the above items are missing, please contact your reseller.

### Product Overview

**Link/ Power LED**

Link – Blinks when data is being transmitted through the wireless connection.  
Power – Indicates that the DWL-G122 is properly installed in the computer.

**USB Connector**

Connects to Yours desktop or laptop computer.

**Antenna**

Used to wirelessly Connector to 802.11b Networks.


# 1

## Windows OS Installation

### Insert the D-Link CD-ROM Into Your Computer

**Turn on the computer** and **Insert** the **D-Link Air DWL-G122 Driver CD** in the CD-ROM drive.

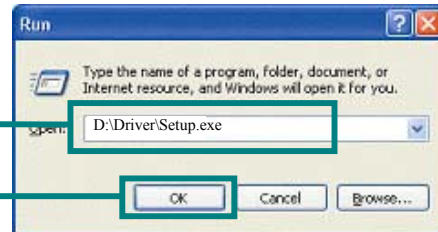
The step-by-step instructions that follow are shown in **Windows XP**. The steps and screens are similar for the other Windows operating systems.

 Do **NOT** install the **DWL-G122 USB Adapter** into your computer before installing the driver software on the **D-Link CD!**

If the CD Autorun function does not automatically Go to **Start > Run** on your computer, then type "**D:\Driver\Setup.exe**." If it does start, proceed to the next screen.

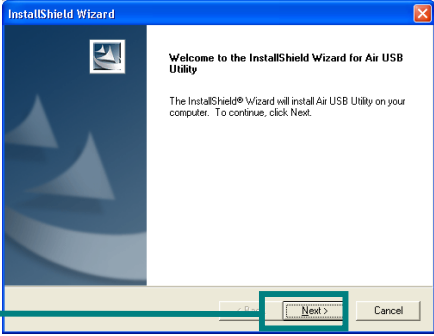
Type "**D:\Driver\Setup.exe**."

Click **OK**

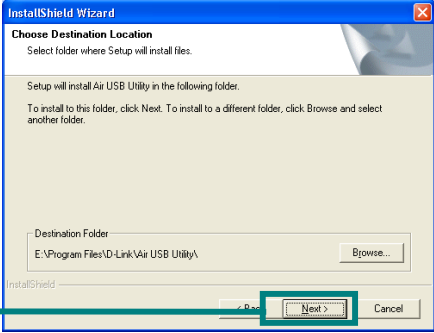


The letter "**D**" represents the letter of the CD-ROM drive. Your CD-ROM drive may be a different drive letter.

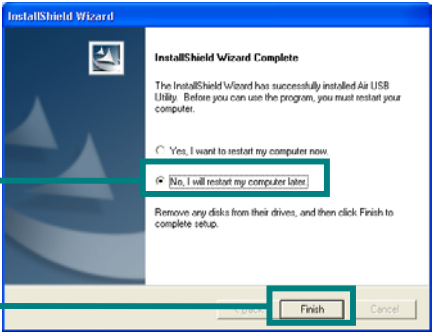
**Click Next**



**Click Next**



**Click No, I will restart my computer later**



**Click Finish**

**Shut down Your Computer**

## 2 Installing the DWL-G122 Wireless USB Adapter to Your Computer

Removing the protective covering for the DWL-G122.  
Insert one end of the USB Adapter into the provided USB cable and plug the other end into your computer's USB Port.

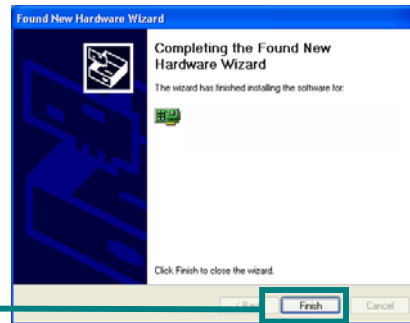
## 3 Turn on Your Computer

When you restart your computer this **Found New Hardware Wizard (Windows XP)** screen will appear:


Select **Install the software automatically (Recommended)**

Click **Next**

Windows XP will automatically load the driver files.



Click **Finish**

 For Windows XP/2000, a screen similar to this **Digital Signature Not Found** screen may appear during the installation.



Click **Continue Anyway** to continue the installation

For Windows Me and 98SE, this screen may appear.

Click **Yes** finalize the installation



# 4

## Your Installation is Complete!

After you've continued in Windows XP (or after the computer restarts in the other Windows operating systems), the D-Link *Air* DWL-G122 **Configuration Utility** will automatically start and the utility icon will appear in the bottom right hand corner of the desktop screen (systray). **If this icon appears GREEN, then you have successfully installed the DWL-G122, are connected to a wireless network and are ready to communicate!**

For Windows XP, if you wish to use the **Air USB Utility**, please perform the following steps.

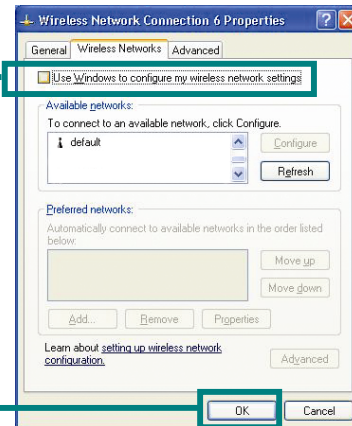
Double-click the **utility icon** to use the configuration utility.



Click **Advanced**



Uncheck "Use Windows to configure my wireless network settings."



Click **OK**

# 5

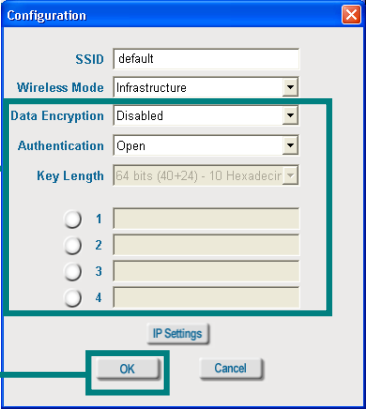
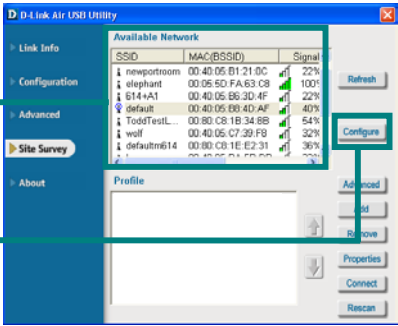
## Connecting to a Wireless Network

This window displays the available wireless networks.

Click **Configure** after highlighting a wireless network you want to connect to.

By initial factory settings, WEP encryption is turned off. If your access point or wireless router is configured with WEP encryption, please make sure to enter the correct WEP key.

Click **OK**



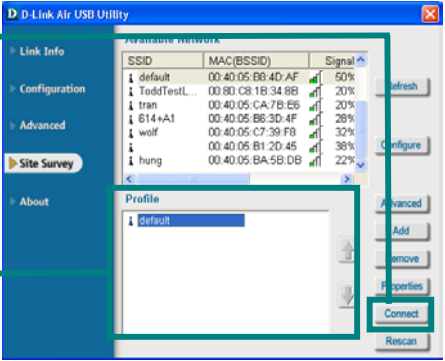
# 5

## Connecting to a Wireless Network (cont.)

Click **Connect**

**Finished!** You should now be connected to your wireless network! Now you are ready to participate in your new wireless environment!

The configured access point or wireless router will be displayed in the bottom window. If you have more than one profile, select the profile you wish to connect to.



# Appendix

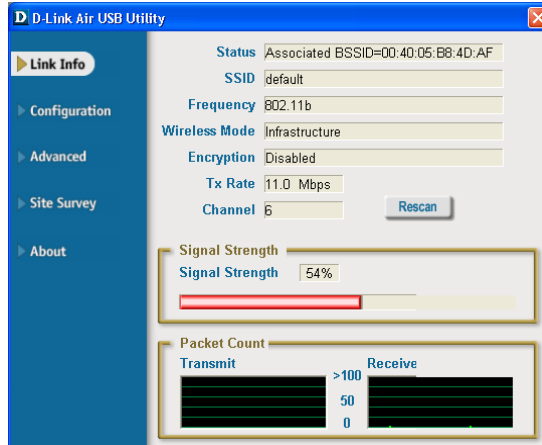
## Using the Configuration Utility For Windows Operating Systems

**Status:** Displays the MAC Address of the Access Point that is associated with the DWL-G122.

**SSID:** The Service Set Identifier is the name assigned to the wireless network. The factory SSID setting is set to **default**.

**Frequency:** Displays the current frequency used by the adapter.

**Wireless Mode:** The factory setting is set to Infrastructure. Ad-Hoc mode is used for peer-to-peer networking.



**Encryption:** Displays the current encryption status of the wireless connection.

**TxRate:** The default setting is **Auto**; meaning, TxRate settings are automatically determined by the DWL-G122 depending on the distance from the access point.

**Packet Count:** Graphically displays the statistics of data transmitted and received.

**Channel:** Displays the channel information. By default, the channel is set to 6. Please note that the DWL-G122 will automatically adjust channel depending on the Access Point.

**Signal Strength:** The Signal Strength represents the wireless signal between the access point and the DWL-G122. The percentage coincides with the graphical bar.

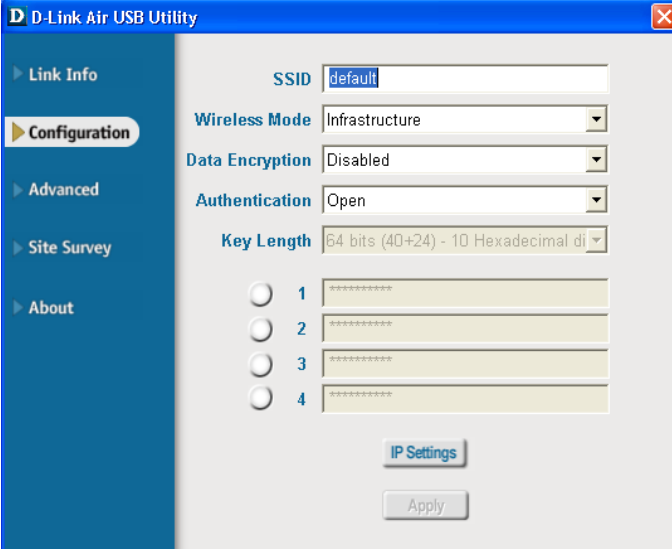


## Appendix (cont.)

**SSID:** The Service Set Identifier is the name assigned to the wireless network. The factory SSID setting is set to **default**. Make changes here to match the SSID on existing Wireless Router or Access Point.

**Wireless Mode:** The factory setting is set to **Infrastructure**. Ad-Hoc mode is used for peer-to-peer networking.

**Data Encryption:** The default setting is set to **Disabled**. The adapter supports WEP when encryption is enabled.



The screenshot shows the 'D-Link Air USB Utility' window with the 'Configuration' tab selected. The settings are as follows:

Setting	Value
SSID	default
Wireless Mode	Infrastructure
Data Encryption	Disabled
Authentication	Open
Key Length	64 bits (40+24) - 10 Hexadecimal digits
Key Index 1	*****
Key Index 2	*****
Key Index 3	*****
Key Index 4	*****

Buttons: IP Settings, Apply

**Authentication:** You can specify the authentication mode for the wireless network. The default setting is set to **Open Authentication**.

**Key Length:** When encryption is enabled, you will have the option to specify the level and key format of the encryption used. Select the appropriate Key Index : 1-4 and enter ASCII or hexadecimal digits in the appropriate field.

## LIMITED WARRANTY

D-Link provides this limited warranty for its product only to the person or entity who originally purchased the product from D-Link or its authorized reseller or distributor.

**Limited Hardware Warranty:** D-Link warrants that the hardware portion of the D-Link products described below (“Hardware”) will be free from material defects in workmanship and materials from the date of original retail purchase of the Hardware, for the period set forth below applicable to the product type (“Warranty Period”) if the Hardware is used and serviced in accordance with applicable documentation; provided that a completed Registration Card is returned to an Authorized D-Link Service Office within ninety (90) days after the date of original retail purchase of the Hardware. If a completed Registration Card is not received by an authorized D-Link Service Office within such ninety (90) period, then the Warranty Period shall be ninety (90) days from the date of purchase.

<b><i>Product Type</i></b>	<b><i>Warranty Period</i></b>
Product (excluding power supplies and fans)	One (1) Year
Power Supplies and Fans	One (1) Year
Spare parts and spare kits	Ninety (90) days

D-Link’s sole obligation shall be to repair or replace the defective Hardware at no charge to the original owner. Such repair or replacement will be rendered by D-Link at an Authorized D-Link Service Office. The replacement Hardware need not be new or of an identical make, model or part; D-Link may in its discretion may replace the defective Hardware (or any part thereof) with any reconditioned product that D-Link reasonably determines is substantially equivalent (or superior) in all material respects to the defective Hardware. The Warranty Period shall extend for an additional ninety (90) days after any repaired or replaced Hardware is delivered. If a material defect is incapable of correction, or if D-Link determines in its sole discretion that it is not practical to repair or replace the defective Hardware, the price paid by the original purchaser for the defective Hardware will be refunded by D-Link upon return to D-Link of the defective Hardware. All Hardware (or part thereof) that is replaced by D-Link, or for which the purchase price is refunded, shall become the property of D-Link upon replacement or refund.

**Limited Software Warranty:** D-Link warrants that the software portion of the product (“Software”) will substantially conform to D-Link’s then current functional specifications for the Software, as set forth in the applicable documentation, from the date of original delivery of the Software for a period of ninety (90) days (“Warranty Period”), if the Software is properly installed on approved hardware and operated as contemplated in its documentation. D-Link further warrants that, during the Warranty Period, the magnetic media on which D-Link delivers the Software will be free of physical defects. D-Link’s sole obligation shall be to replace the non-conforming Software (or defective media) with software that substantially conforms to D-Link’s functional specifications for the Software. Except as otherwise agreed by D-Link in writing, the replacement Software is provided only to the original licensee, and is subject to the terms and conditions of the license granted by D-Link for the Software. The Warranty Period shall extend for an additional ninety (90) days after any replacement Software is delivered. If a material non-conformance is incapable of correction, or if D-Link determines in its sole discretion that it is not practical to replace the non-conforming Software, the price paid by the original licensee for the non-conforming Software will be refunded by D-Link; provided that the non-conforming Software (and all copies thereof) is first returned to D-Link. The license granted respecting any Software for which a refund is given automatically terminates.

## Federal Communication Commission Interference Statement

This equipment has been tested and found to comply with the limits for a Class B digital device, pursuant to Part 15 of the FCC Rules. These limits are designed to provide reasonable protection against harmful interference in a residential installation. This equipment generates, uses and can radiate radio frequency energy and, if not installed and used in accordance with the instructions, may cause harmful interference to radio communications. However, there is no guarantee that interference will not occur in a particular installation. If this equipment does cause harmful interference to radio or television reception, which can be determined by turning the equipment off and on, the user is encouraged to try to correct the interference by one of the following measures:

- Reorient or relocate the receiving antenna.
- Increase the separation between the equipment and receiver.
- Connect the equipment into an outlet on a circuit different from that to which the receiver is connected.
- Consult the dealer or an experienced radio/TV technician for help.

This device complies with Part 15 of the FCC Rules. Operation is subject to the following two conditions: (1) This device may not cause harmful interference, and (2) this device must accept any interference received, including interference that may cause undesired operation.

FCC Caution: Any changes or modifications not expressly approved by the party responsible for compliance could void the user's authority to operate this equipment.

"D-Link declares that WUS-G02 and DWL-G122 (IEEE 802.11g Wireless LAN USB Adapter) is limited in CH1~CH11 by specified firmware controlled in USA."

### IMPORTANT NOTE:

#### FCC Radiation Exposure Statement:

This equipment complies with FCC radiation exposure limits set forth for an uncontrolled environment.

This device complies with FCC RF Exposure limits set forth for an uncontrolled environment, under 47 CFR 2.1093 paragraph (d)(2).

This transmitter must not be co-located or operating in conjunction with any other antenna or transmitter.

### INFORMATION TO USER:

The users manual or instruction manual for an intentional or unintentional radiator shall caution the user that changes or modifications not expressly approved by the party responsible for compliance could void the user's authority to operate the equipment.