

Compex 108Mbps Wireless Super-G USB2.0 Adapter

WLU108G

Ordering Information: WLU108G 1a

Version 1.1



networks@work

networks@work



Manual Number:
M-0455-V1.1C
Version 1.1
January 2005

1. Introduction



Compex WLU108G is a thumb-sized USB adapter with its Super-G advantage, which enhances the performance of IEEE 802.11a/b/g more powerfully and efficiently. With its plug and play operation, easy-to-use configuration utility and small size, it not only eliminates the usual hassle of hardware installation but also gives you fast reliable Internet access.

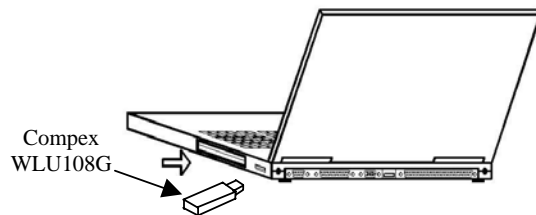
2. Package Content

The Compex WLU108G retail package contains the following items to start you off:

- 1x Compex WLU108G
- 1x External USB Cable
- 1x Quick Install Guide with Warranty Registration Card
- 1x Product CD

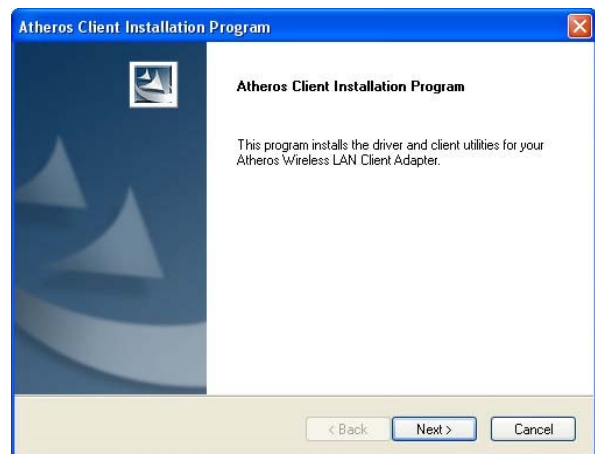
3. Drivers and Utility Installation

Actual product appearance may slightly differ depending on the hardware version.

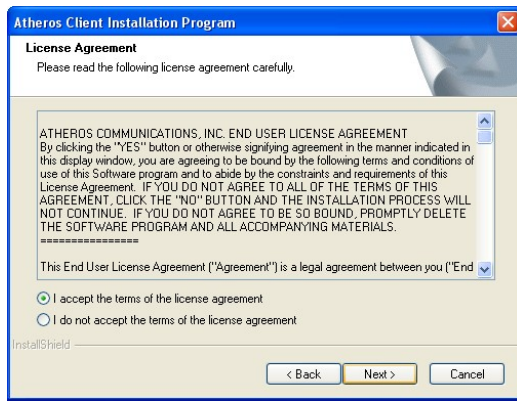


The following installation process is based on Windows XP. For installation process operating under Windows 2000, kindly refer to the Drivers & Utilities Installation Guide in the Product CD.

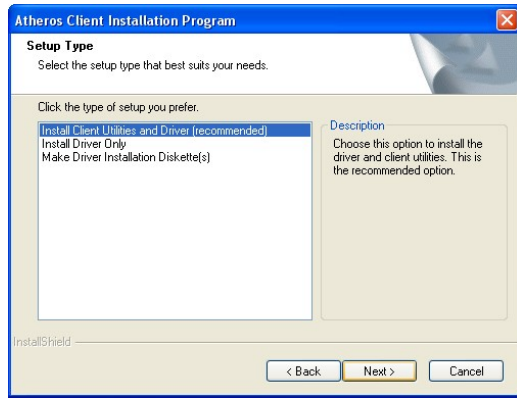
1. Insert Compex WLU108G to your USB slot of your PC/notebook.
2. Next, insert the Product CD into your computer CD-ROM drive. Click on **Utilities** and the system will run the *setup.exe* automatically. Soon the **Atheros Client Installation Program** screen appears. From here, click **Next>** to proceed.



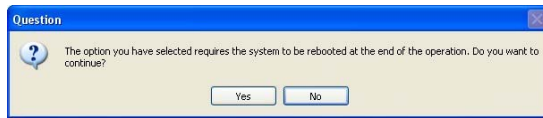
3. When the License Agreement screen appears, you are required to read and accept the agreement to continue. Click **Next>**.



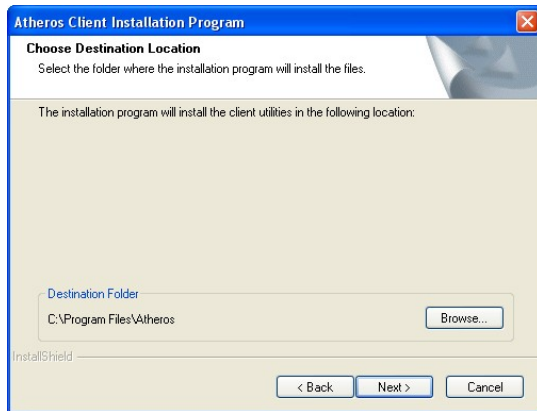
4. Select **Install Client Utilities and Driver (recommended)** for the setup type you need. For other options, refer to User's Manual for more details. Click **Next>** to proceed.



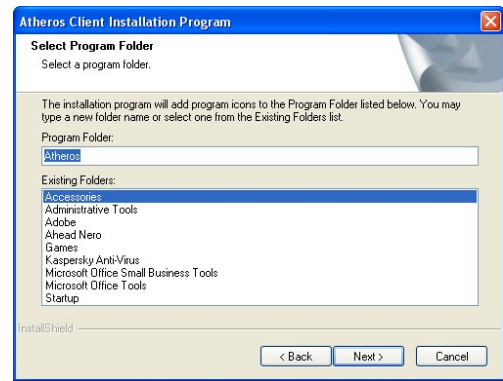
5. The prompt screen appears to inform you that the install option requires the system to be rebooted at the end of the installation process. Click **Yes** to proceed.



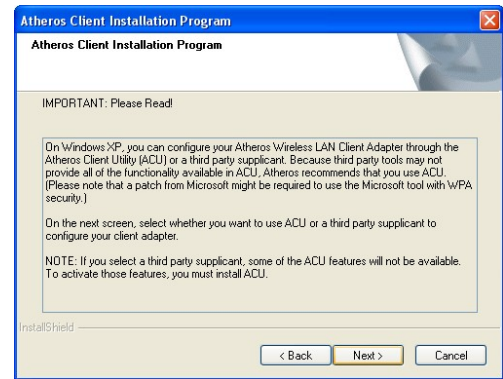
6. Select the destination directory. The default is **C:\Program Files\Atheros**. Click **Next>** to proceed.



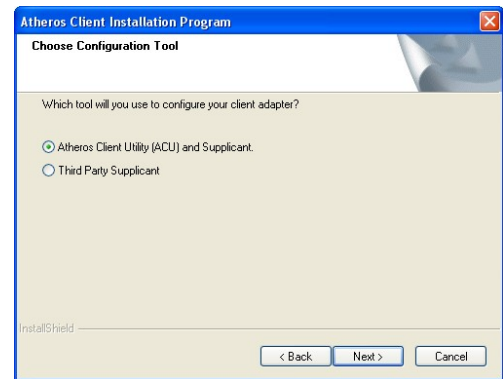
7. Select the program folder for the start menu. The default is **Atheros**. Click **Next>** to proceed.



8. For a Windows XP installation, the next screen defines the Windows Zero Configuration. You may also use Wireless Zero Configuration utility that is only available in Windows XP to configure your Complex WLU108G. Refer to User's Manual **Appendix III "Windows XP Wireless Zero Configuration Utility"** for details.



9. Select **Atheros Client Utility (ACU) and Supplicant**. Click **Next>** to proceed.



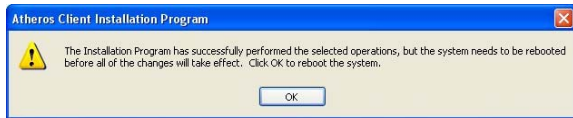
10. The prompt screen appears to inform you that the installer will automatically install the driver if you have inserted your client adapter. If it is not, insert it, then cancel the Found New Hardware Wizard if it appears. Click **OK** to begin the installation.



11. When you see a Windows Logo error for the Atheros **USB 2.0 Wireless Network Adapter** appear, click **Continue Anyway** to continue installation.



- The prompt screen appears to inform you that the installation is successful. Click **OK** to reboot and complete the installation.

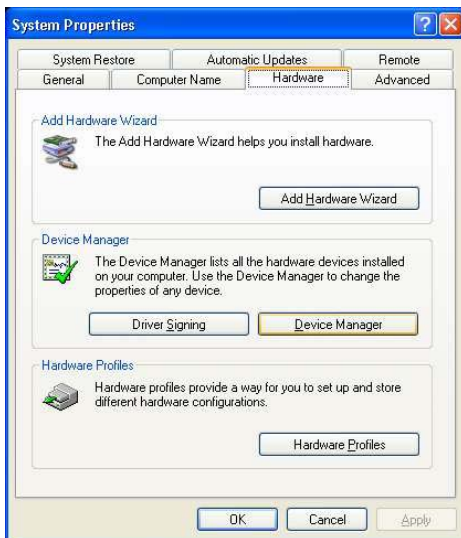


To confirm if the driver had successfully installed to your system,

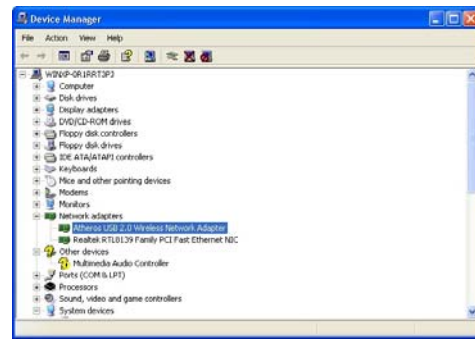
- Proceed to your desktop, right click on **My Computer** and select **Properties**.



- Select **Hardware** tab and click on **Device Manager**.



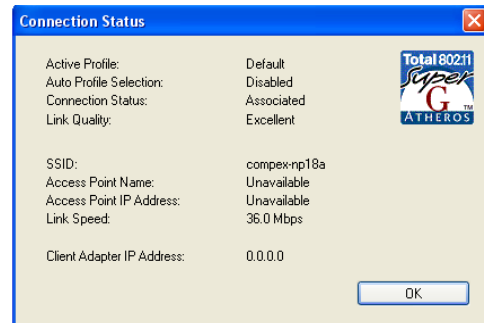
- The folder name, **Atheros USB 2.0 Wireless Network Card** will appear in the **Network Adapters** section. This indicates that the drivers for **Complex WLU108G** has successfully installed to your system!



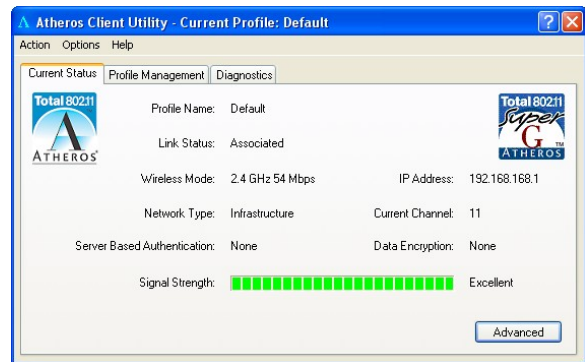
- To activate the utility program, double click on the icon shown in the system tray.



Once you click on the utility option, the following screen will appear to give you a glimpse of your connection status. To exit it, click **OK**.



To use **Atheros Client Utility**, go to **Start Menu** followed by **Programs**. Then select **Atheros**. From **Atheros**, select **Atheros Client Utility**. You may start to configure your **Complex WLU108G**.

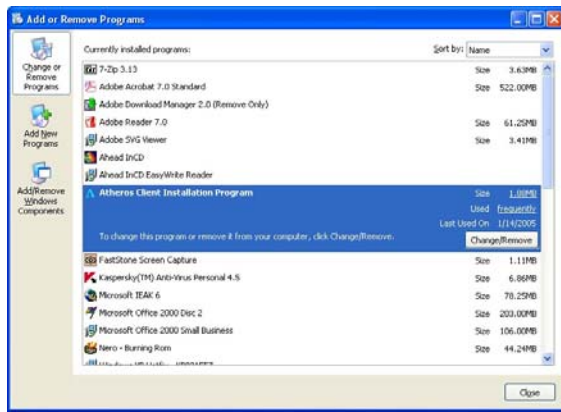


For details in using the Utility, refer to the User's Manual stored in the Product CD.

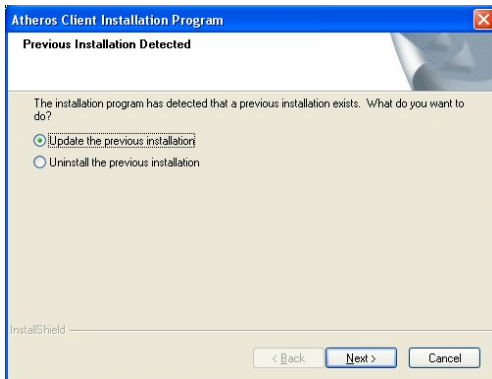
4. Un-install Complex WLU108G

Please note that you need to close all programs before uninstalling your **Complex WLU108G**.

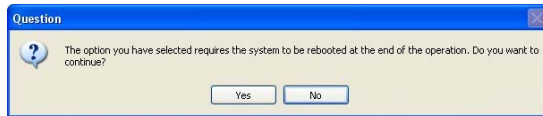
- From your **Start** menu, go to **Settings** to select **Control Panel**. From **Control Panel**, select and double-click the icon next to **Add or Remove Programs**. When the **Add or Remove Programs** screen appears, select **Atheros Client Installation Program**. To uninstall the **Atheros Client Utility** application, click **Change/Remove**.



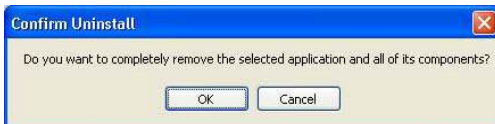
- Wait for a little while until you see the **Atheros Client Installation Program** screen with two options. Select **Uninstall the previous installation**. Then click **Next>** to proceed.



- The prompt screen appears to notify you that the uninstall option requires the system to be rebooted at the end of the installation process. Click **Yes** to proceed. Your PC will shut down first and then re-starts.



- Your system will prompt you if you want to remove the application completely. Click **OK** to proceed.



- Wait for about 30 seconds. Then you are asked to decide whether to remove the device driver or not. If **Yes**, the device driver will be removed. Otherwise if **NO**, the device driver will not be removed. Once you have made your decision, the uninstall process begins. Soon the prompt screen appears informing you that the uninstall process is successful, and that your system needs to be rebooted. Click **OK** to reboot the system.

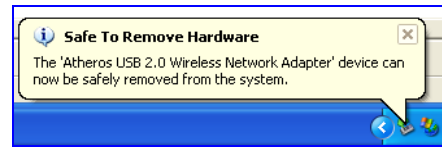
5. Remove USB Adapter from the System

If you wish to remove your USB adapter from your system,

- Go to the system tray, click on **Safely Remove Hardware** icon, and click **Safely Remove Hardware**.



- Now, you can remove Compex WLU108G from your USB slot.



This document may become superseded, in which case you may find its latest version at:
<http://www.compex.com.sg/prodspec.asp?f=Manual&s=1>

Disclaimer: Compex, Inc. provides this guide without warranty of any kind, either expressed or implied, including but not limited to the implied warranties of merchantability and fitness for a particular purpose. Compex, Inc. may make improvements and/or changes to the product and/or specifications of the product described in this guide, without prior notice. Compex, Inc. will not be liable for any technical inaccuracies or typographical errors found in this guide. Changes are periodically made to the information contained herein and will be incorporated into later versions of the guide. The information contained is subject to change without prior notice.

Trademark Information: Compex®, ReadyLINK® and MicroHub® are registered trademarks of Compex, Inc. Microsoft Windows and the Windows logo are the trademarks of Microsoft Corp. NetWare is the registered trademark of Novell Inc. All other brand and product names are trademarks or registered trademarks of their respective owners.

Notice: Copyrights © 2004 by Compex, Inc. All rights reserved. Reproduction, adaptation, or translation without prior permission of Compex, Inc. is prohibited, except as allowed under the copyright laws.

Manual Revision by Ann
 Manual Number: **M-0455-V1.1C** Version 1.1, January 2005

FCC NOTICE: This device has been tested and found to comply with the limits for a **Class B** digital device, pursuant to **Part 15 of the FCC Rules**. These limits are designed to provide reasonable protection against harmful interference in a residential installation. This device generates, uses and can radiate radio frequency energy and, if not installed and used in accordance with the instructions, may cause harmful interference to radio communications. However, there is no guarantee that interference will not occur in a particular installation. If this device does cause harmful interference to radio or television reception, the user is encouraged to try to correct the interference by one or more of the following measures:

- Reorient or relocate the receiving antenna.
- Connect the computer into an outlet on a circuit different from that to which the receiver is connected.
- Increase the separation between the computer and receiver.
- Consult the dealer or an experienced radio / TV technician for help.

Caution: Any changes or modifications not expressly approved by the grantee of this device could void the user's authority to operate the equipment.

FCC Compliance Statement: This device complies with Part 15 of the FCC Rules. Operation is subject to the following two conditions:

- This device may not cause harmful interference, and
- This device must accept any interference received, including interference that may cause undesired operation.

Products that contain a radio transmitter are labeled with FCC ID and may also carry the FCC logo.

Caution: Exposure to Radio Frequency Radiation.

To comply with the FCC RF exposure compliance requirements, the following antenna installation and device operation configurations must be satisfied:

- For configurations using the integral antenna, the separation distance between the antenna(s) and any person's body (including hands, wrists, feet and ankles) must be at least 2.5cm (1 inch).
- For configurations using an approved external antenna, the separation distance between the antenna and any person's body (including hands, wrists, feet and ankles) must be at least 20cm (8 inch).

The transmitter shall not be collocated with other transmitters or antennas.

ICES 003 Statement
 This Class B digital apparatus complies with Canadian ICES-003.

DECLARATION OF CONFORMITY: Compex, Inc. declares that the product:
Product Name: Compex Super-G USB Dongle Adapter
Model No.: WLU108G conforms to the following **Product Standards:**
Radiated Emission Standards: ETSI EN 300 328-2; July 2000; FCC: 47 CFR Part 15, Subpart B, ANSI C63.4-1992; 47 CFR Part 15, Subpart C (Section 15.247), ANSI C63.4-1992.
Conducted Emission Standards: ETS 300 826; Nov. 1997.
Immunity Standards: IEC 801-2; IEC 801-3; IEC 801-4
Low Voltage Directive: EN 60 950:1992+A1; 1993+A2; 1993+A3; 1995+A4; 1996+A11; 1997
Therefore, this product is in conformity with the following regional standards: FCC Class B – following the provisions of FCC Part 15 directive; **CE Mark** – following the provisions of the EC directive.

Manufacturer's Name: Compex, Inc.
Address: 840 Columbia Street, Suite B
 Brea, CA 92821, USA

European Contact & Technical Support
 ReadyLINK Networktechnology GmbH,
 Albert Einstein Straße 34/M21,
 63322 Rödermark, Germany
Fax: ++49 (60) 749-0668

-----✂-----Cut along the dotted line-----✂-----Cut along the dotted line-----✂-----Cut along the dotted line-----✂-----

WARRANTY REGISTRATION CARD		[M-0088-V2.4C]	
You can register via Internet at: http://www.cpx.com or http://www.compex.com.sg		Or E-mail: support@compex.com.sg with the following information:	
To activate the warranty, please complete this card and return to Compex within ninety (90) days of purchase date.			
Product:	Purchase Date:	Model:	Serial No:
Name:		E-mail:	
Company:			
Address:			
Postal/Zip Code:		Country:	
Phone: ()			
How did you learn about Compex?	<input type="checkbox"/> Work	<input type="checkbox"/> Friend	<input type="checkbox"/> Internet
	<input type="checkbox"/> Dealer	<input type="checkbox"/> Magazine	<input type="checkbox"/> Exhibition
	<input type="checkbox"/> Other:		

Note:
 For purchases within U.S.A and Canada, please fax to Compex, Inc. at (714) 482-0332
 For purchases outside U.S.A and Canada, please fax to Compex Systems Pte Ltd at (65) 6280-9947

This device complies with Part15 of the FCC Rules.

Operation is subject to the following two conditions:

- This device may not cause harmful interference, and
- This device must accept any interference received, including interference that may cause undesired operation.

ong, the dotted line-----✂-----Cut along the dotted line-----✂-----Cut along the dotted line-----✂-----

Federal Communication Commission Interference Statement

This equipment has been tested and found to comply with the limits for a Class B digital device, pursuant to Part 15 of the FCC Rules. These limits are designed to provide reasonable protection against harmful interference in a residential installation. This equipment generates, uses and can radiate radio frequency energy and, if not installed and used in accordance with the instructions, may cause harmful interference to radio communications. However, there is no guarantee that interference will not occur in a particular installation. If this equipment does cause harmful interference to radio or television reception, which can be determined by turning the equipment off and on, the user is encouraged to try to correct the interference by one of the following measures:

- Reorient or relocate the receiving antenna.
- Increase the separation between the equipment and receiver.
- Connect the equipment into an outlet on a circuit different from that to which the receiver is connected.
- Consult the dealer or an experienced radio/TV technician for help.

This device complies with Part 15 of the FCC Rules. Operation is subject to the following two conditions: (1) This device may not cause harmful interference, and (2) this device must accept any interference received, including interference that may cause undesired operation.

Caution: Any changes or modifications not expressly approved by the party responsible for compliance could void the user's authority to operate this equipment.

RF Exposure Warning: This equipment complies with FCC radiation exposure limits set forth for an uncontrolled environment. This device is provided with an internal antenna and minimum 20 cm spacing must be maintained between this PC C Card and all person's body (excluding extremities of hands, wrist and feet) during wireless mode of operation. Further, this transmitter must not be co-located or operated in conjunction with any other antenna or transmitter.