

# **Quick Start Guide**

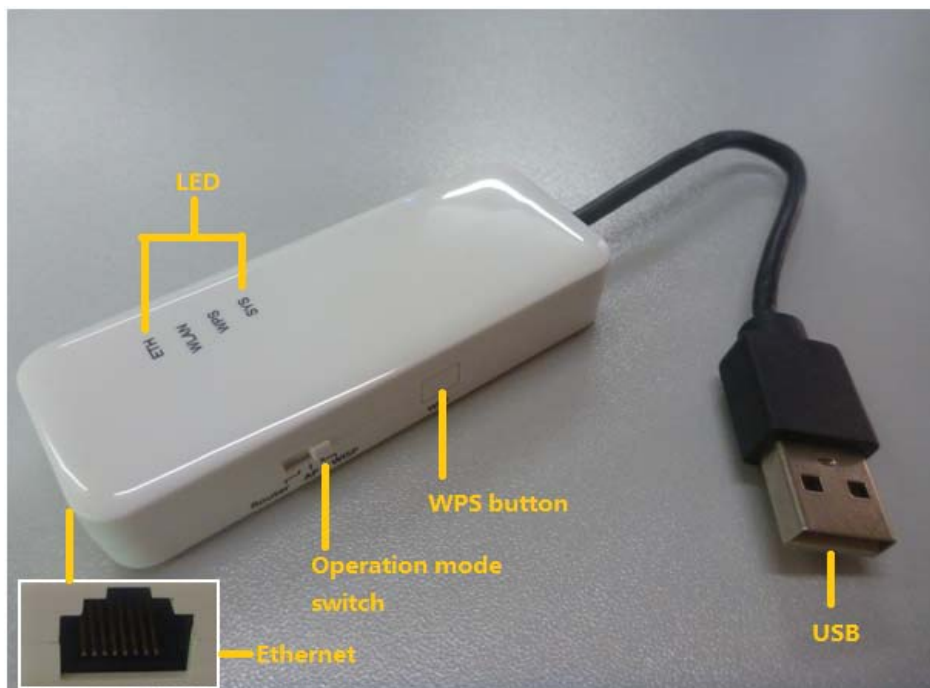
**FW151A**

IEEE802.11n Wireless 1T1R Router

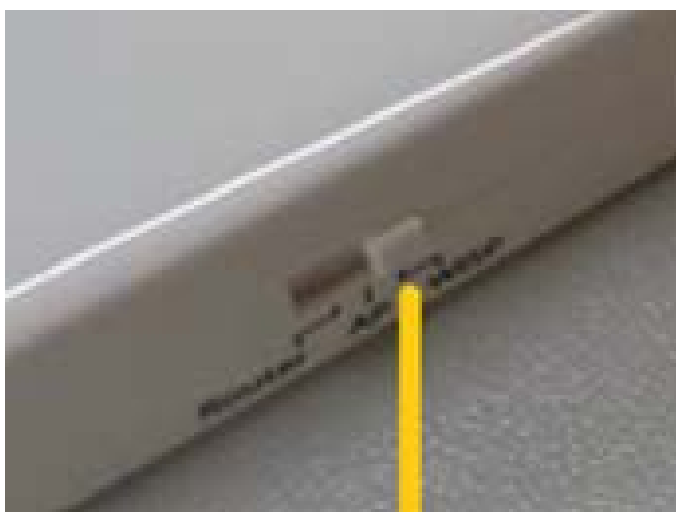
This Quick Start Guide is intended for experienced installers. For more information, refer to the relevant sections in the FW151A Manual.

## Hardware Installation

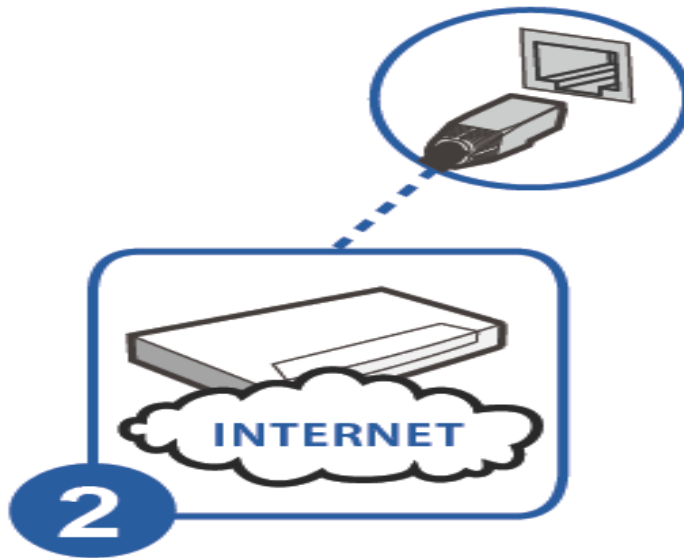
### ◆ General Hardware Features



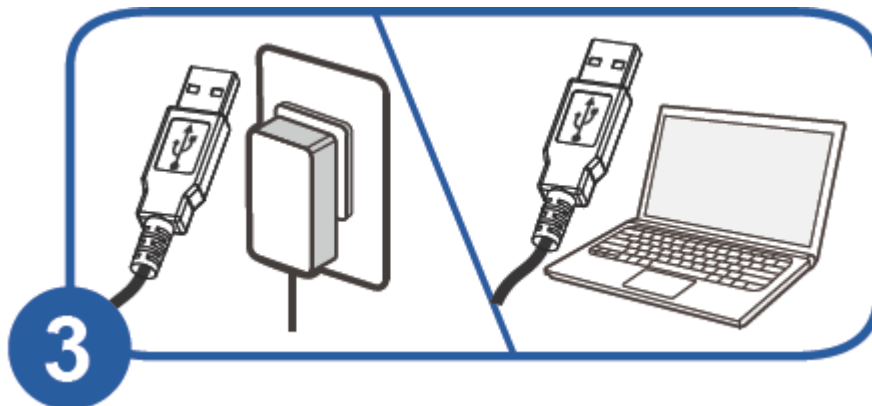
**Step 1:** Set the slider to Router



**Step 2:** Connect to an Ethernet port with Internet access.



**Step 3:** Connect the USB port to a power adaptor or computer.

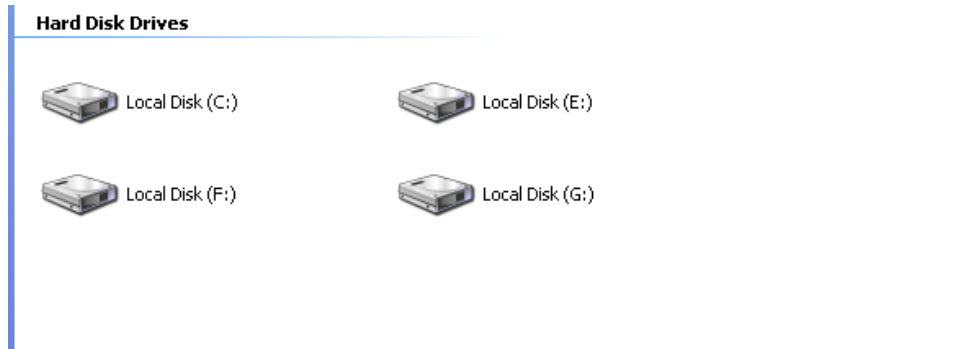


## Driver Installation

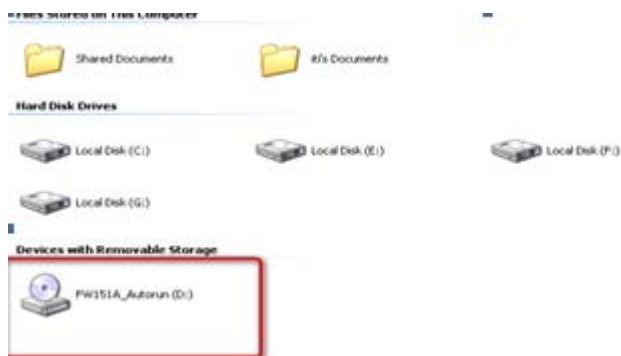
### Windows 7:

If you connect the FW151A's USB port to a computer running Windows 7, the Autopaly screen will display. Click Setup.exe to install the USB driver. For previous versions of Windows, locate and double-click the Setup.exe file in the CD drive on your computer.

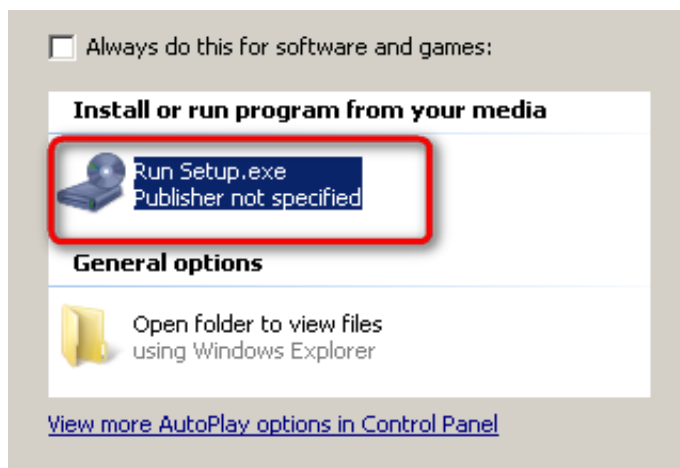
**Step 1:** Click the my computer, there is no "FW151A\_Autorun" disk.



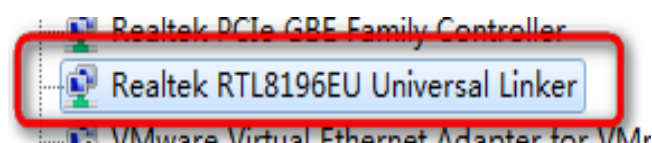
**Step 2:** Put the USB plug to the port of computer, then it will display “FW151A\_Autorun” disk.



**Step 3:** Click the icon FW151A\_Autorun, the automatic screen will display. Click Setup.exe to install USB network drivers.



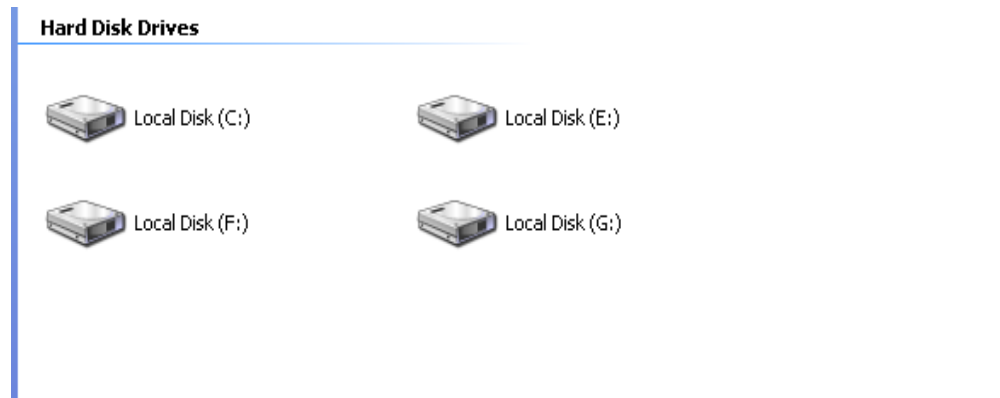
**Step 4:** Complete Step 1 to 3, check the computer management and device manager.



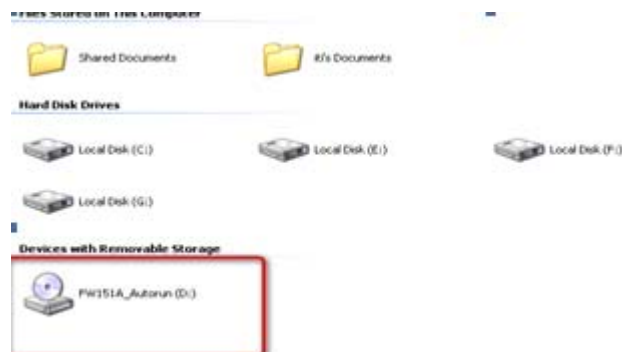
## Windows XP:

If you connect the FW151A's USB port to a computer running Windows XP. Click Setup.exe to install the USB driver. For previous versions of Windows, locate and double-click the Setup file in the CD drive on your computer.

**Step 1:** Click the my computer, there is no “FW151A\_Autorun” disk.



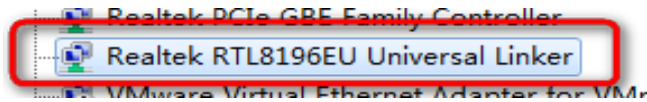
**Step 2:** Put the USB plug to the port of computer, then it will display “FW151A\_Autorun” disk.



**Step 3:** Open FW151A-Autorun disk. Click the Setup.exe to install USB network drivers.



**Step 4:** Complete Step 1 to 4, check the computer management and device manager.



## Accessing the Web Configurator

**FW151A default vaule:**

IP address: 192.168.1.1

Username: admin

Password: admin

**Router Mode:**

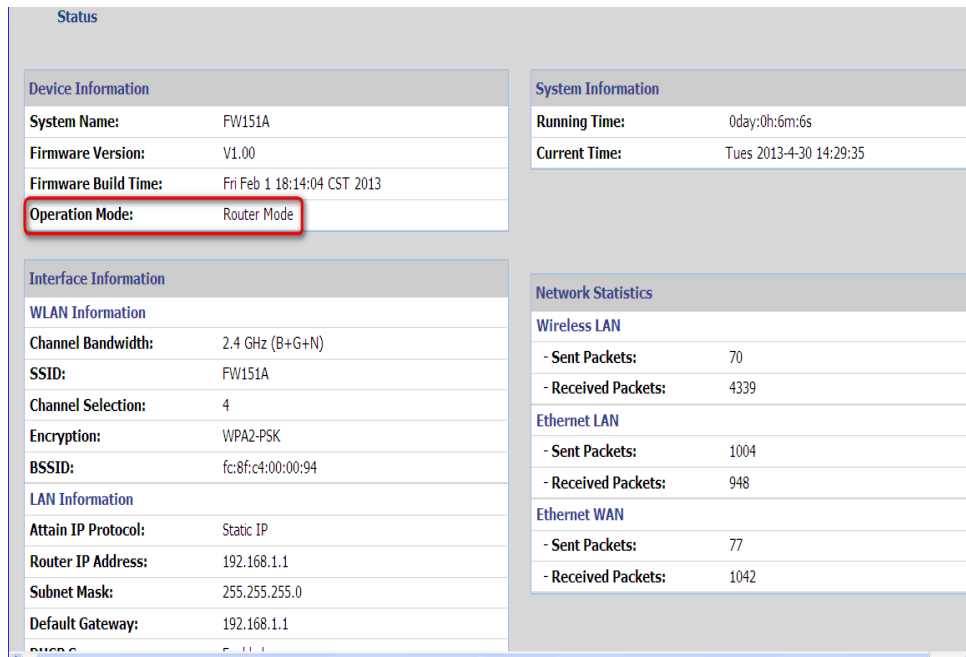
If your FW151A's hardware slider switch to Router.

**Step 1:** Make sure your FW151A hardware is properly connected and prepare your computer or computer network to connect to the FW151A. Because the DHCP server is enable, so we don't need manual set local IP address.

**Step 2:** Launch your web browser.

**Step 3:** The FW151A default IP as 192.168.1.1. Type "http://192.168.1.1" as the website address.

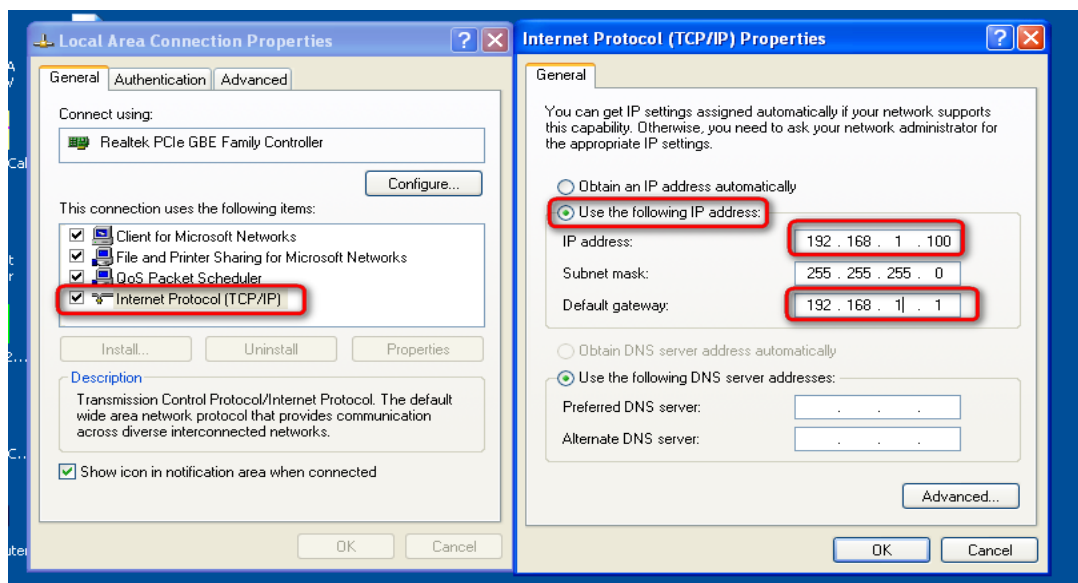
A screenshot of the web configurator login page for the FW151A. The page has a blue background. At the top, it says 'Enter User Name/Password and click to login.' Below this, there are three input fields: 'User Name:' with a text box, 'Password:' with a text box, and 'Language:' with a dropdown menu set to 'English'. Below the input fields, there is a note: '( max. 31 alphanumeric, printable characters and no spaces )'. At the bottom, there are two buttons: 'Login' and 'Reset'.



## AP Mode:

If your FW151A's hardware slider switch to AP. When the FW151A work on AP mode, the DHCP sever is disable.

**Step 1:** Set the local IP address must be in the same subnet of FW151A.



**Step 2:** Launch your web browser.

**Step 3:** Type "http://192.168.1.1" as the website address.

Enter User Name/Password and click to login.

User Name:

Password:

Language:

( max. 31 alphanumeric, printable characters and no spaces )

Login Reset

Status

| Device Information   |                             |
|----------------------|-----------------------------|
| System Name:         | FW151A                      |
| Firmware Version:    | V1.00                       |
| Firmware Build Time: | Fri Feb 1 18:14:04 CST 2013 |
| Operation Mode:      | AP Mode                     |

| System Information |                        |
|--------------------|------------------------|
| Running Time:      | 0day:0h:1m:46s         |
| Current Time:      | Thur 2013-5-2 20:39:24 |

| Interface Information |                   |
|-----------------------|-------------------|
| WLAN Information      |                   |
| Channel Bandwidth:    | 2.4 GHz (B+G+N)   |
| SSID:                 | FW151A            |
| Channel Selection:    | 4                 |
| Encryption:           | WPA2-PSK          |
| BSSID:                | fc:8f:c4:00:00:94 |
| LAN Information       |                   |
| Attain IP Protocol:   | Static IP         |
| Router IP Address:    | 192.168.1.1       |
| Subnet Mask:          | 255.255.255.0     |
| Default Gateway:      | 0.0.0.0           |

| Network Statistics  |     |
|---------------------|-----|
| Wireless LAN        |     |
| - Sent Packets:     | 480 |
| - Received Packets: | 358 |
| Ethernet LAN        |     |
| - Sent Packets:     | 338 |
| - Received Packets: | 431 |



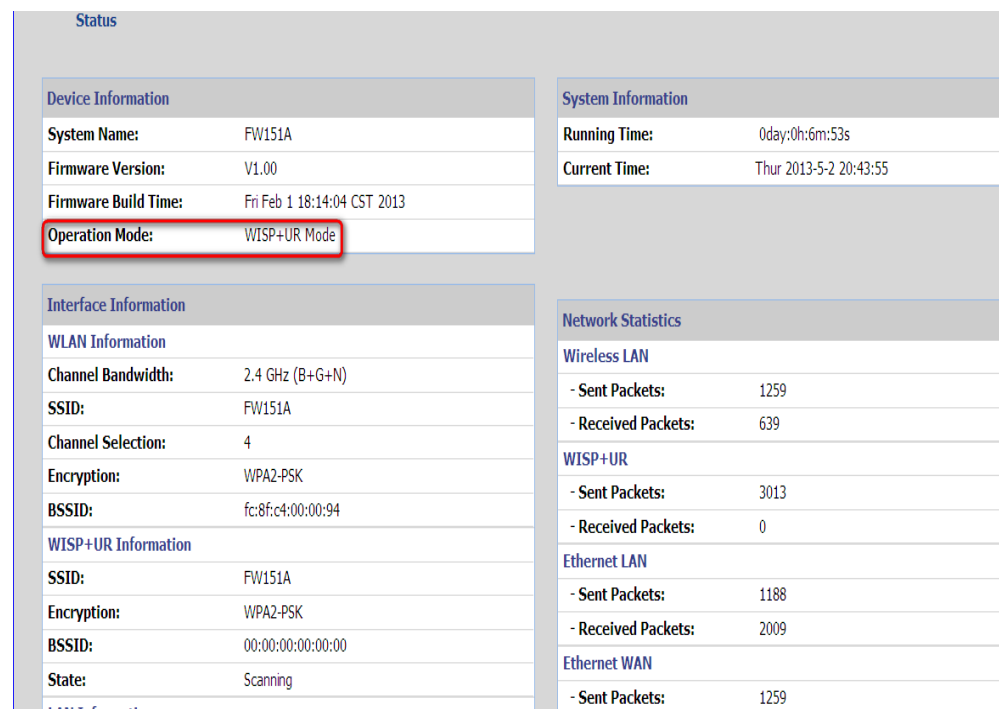
## WISP+UR Mode:

If your FW151A's hardware slider switch to WISP+UR.

**Step 1:** Make sure your FW151A hardware is properly connected and prepare your computer or computer network to connect to the FW151A. Because the DHCP server is enable, so we don't need manual set local IP address.

**Step 2:** Launch your web browser.

**Step 3:** The FW151A default IP as 192.168.1.1. Type "http://192.168.1.1" as the website address.



The screenshot displays the 'Status' page of the FW151A web interface. It is divided into several sections:

- Device Information:**
  - System Name: FW151A
  - Firmware Version: V1.00
  - Firmware Build Time: Fri Feb 1 18:14:04 CST 2013
  - Operation Mode: WISP+UR Mode (highlighted with a red box)
- System Information:**
  - Running Time: 0day:0h:6m:53s
  - Current Time: Thur 2013-5-2 20:43:55
- Interface Information:**
  - WLAN Information:**
    - Channel Bandwidth: 2.4 GHz (B+G+N)
    - SSID: FW151A
    - Channel Selection: 4
    - Encryption: WPA2-PSK
    - BSSID: fc:8f:c4:00:00:94
  - WISP+UR Information:**
    - SSID: FW151A
    - Encryption: WPA2-PSK
    - BSSID: 00:00:00:00:00:00
    - State: Scanning
- Network Statistics:**
  - Wireless LAN:**
    - Sent Packets: 1259
    - Received Packets: 639
  - WISP+UR:**
    - Sent Packets: 3013
    - Received Packets: 0
  - Ethernet LAN:**
    - Sent Packets: 1188
    - Received Packets: 2009
  - Ethernet WAN:**
    - Sent Packets: 1259

## Wireless Connection

### Manual Connection:

**SSID:** FW151A

**KEY:** 00000000

**Step 1:** Make sure the wireless LAN is enabled your FW151A.

**Step 2:** Make sure the wireless adapter on your computer is working

properly.

**Step 3:** Select the SSID and enter the wireless security key to connect your computer to the FW151A

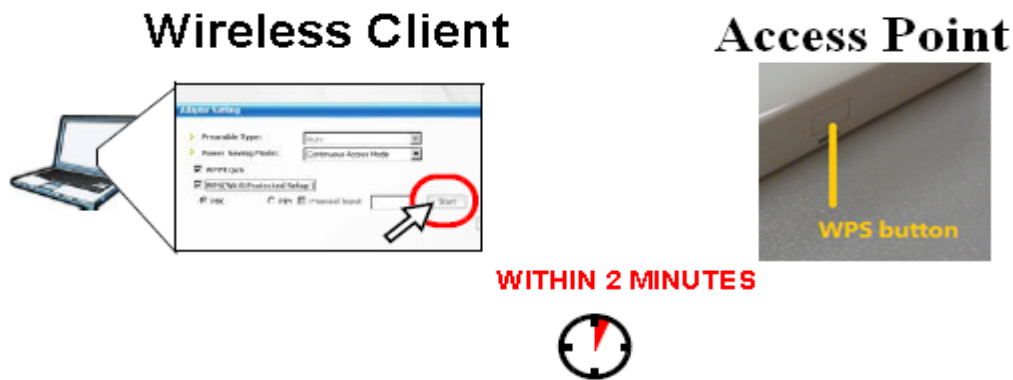
### Using WPS:

**Step 1:** Make sure your FW151A is turned on and working as an AP or wireless router. Make sure the device is placed within range of your network.

**Step 2:** Make sure that you have installed the wireless client in your computer.

**Step 3:** In the wireless client utility, find the WPS settings. Enable WPS and press the WPS button.

**Step 4:** Press the WPS hardware button of FW151A.



### FCC Statement

This device complies with Part 15 of the FCC Rules. Operation is subject to the following two conditions: (1) This device may not cause harmful interference, and (2) this device must accept any interference received,

including interference that may cause undesired operation. Any Changes or modifications not expressly approved by party responsible for compliance could void the user's authority to operate the equipment.

Note: This equipment has been tested and found to comply with the limits for a Class B digital device, pursuant to part 15 of the FCC Rules. These limits are designed to provide reasonable protection against harmful interference in a residential installation. This equipment generates, uses and can radiate radio frequency energy and, if not installed and used in accordance with the instructions, may cause harmful interference to radio communications. However, there is no guarantee that interference will not occur in a particular installation. If this equipment does cause harmful interference to radio or television reception, which can be determined by turning the equipment off and on, the user is encouraged to try to correct the interference by one or more of the following measures:

- Reorient or relocate the receiving antenna.
- Increase the separation between the equipment and receiver.
- Connect the equipment into an outlet on a circuit different from that to which the receiver is connected.
- Consult the dealer or an experienced radio/TV technician for help.

### **Radiation Exposure Statement**

This equipment complies with FCC radiation exposure limits set forth for

an uncontrolled environment. This equipment should be installed and operated with minimum distance 20cm between the radiator & your body.

This transmitter must not be co-located or operating in conjunction with any other antenna or transmitter.