

1: Introduction

BL-RT3070-8D product is a low power, high linear output power, in line with IEEE802.11B I G standard, IEEE 802.11i security protocol support, and the standard IEEE 802.11e quality of service 54M USB wireless card, with other meet the standard of wireless devices interconnected, supporting the latest WEP 64/128 bit data encryption, support WPA-PSK/WPA2-PSK, WPNWPA2 security, wireless transmission rates of up to 54M, 11B is the product of 5 times normal, the All the smart set high gain antenna, can adapt to different working environment, desktop or notebook computer users, and other wireless networking devices need to achieve easy access to the wireless network.

2: Application:

Wireless Internet, network cameras, set-top box GPS, hard disk player, wireless networking equipment and other needs.

3: product Features

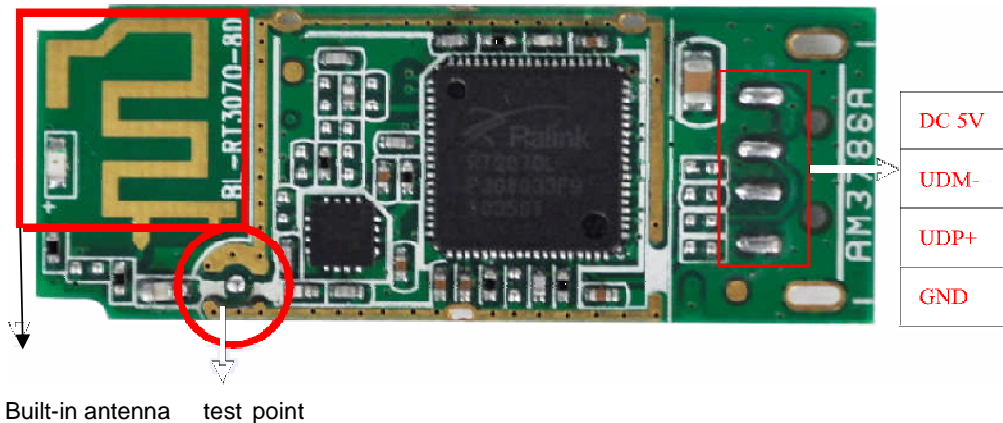
Project	Description
Supported protocols and standards	IEEE 802.11G, IEEE 802.11B CSMA/CA ACK
Bus Interface	USB1.1 USB2.0
Frequency range	2.412-2.462GHz
No. of Channel	11
Data modulation	IEEE 802.11b: DSSS(CCK,DQPSK,DBPSK) IEEE 802.11g: OFDM(64QAM, 16QAM, QPSK, BPSK)
Transmission rate	11b: 11/5.5/2/1M (Adaptive) 11g: 54/48/36/24/18/12/9/6M (Adaptive)
Sensitivity @PER	54M:-72dBm@ 1 0%PER, 11M:-85dBm@8%PER 6M: -88dBm@10%PER, 1M: -90dBm@8%PER
Transmit power	IEEE 802.11b:16.93dBm; IEEE 802.11g:17.75dBm
Antenna gain	3dbi
LED Instructions	Status Indicator
Transmission distance	Indoor up to 100m, outdoor up to 300 meters (depends on the Environments)
Operating System Support	WIN2000/XP/VISTA/LINUX/WINCE/WIN7
Operating voltage	DC 5V +-0.2V
Environment:	Operating temperature:0°C---40°C Work Humidity: 10%---90%
Size (L*W*H)	39.4MM* 14.8MM*3MM
IC	RALINK 2070

4: System Support Platform

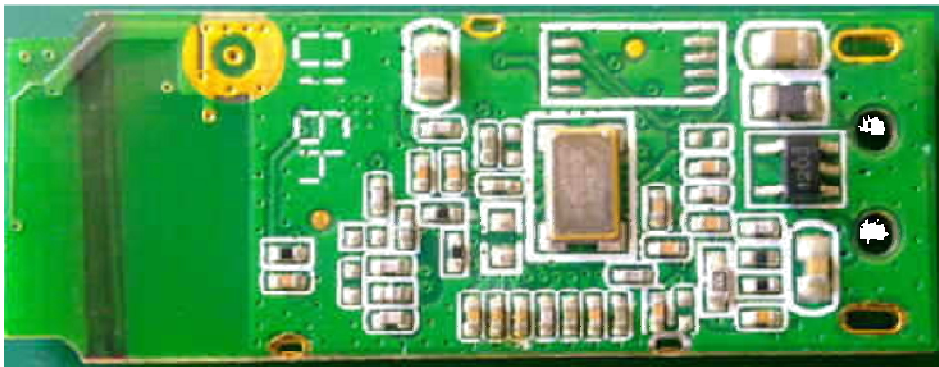
Operating System	CPU Supplier	Drive
WIN2000/XP/VISTA/WIN7	X86 Platform	Support
LLINUX2.4/2.6	ARM, MIPSII	Support
WINCE5.0/6.0	ARIVI ,MIPSII	Support

5: Product pin definition

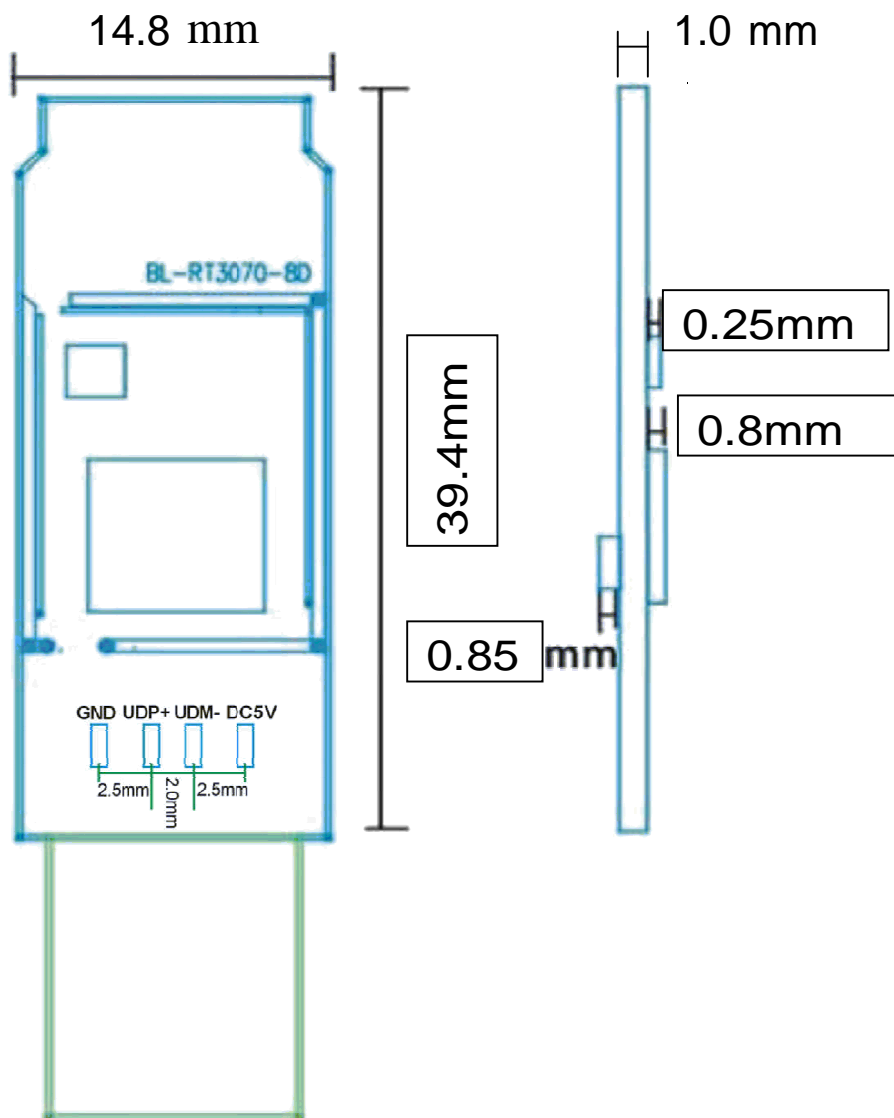
TOP



Bottom



6: Product Size



Appendix A FCC

A.1 FCC statement in User's Manual (for class B)

"Federal Communications Commission (FCC) Statement This Equipment has been tested and found to comply with the limits for a class B digital device, pursuant to Part 15 of the FCC rules. These limits are designed to provide reasonable protection against harmful interference in a residential installation. This equipment generates, uses and can radiate radio frequency energy and, if not installed and used in accordance with the instructions, may cause harmful interference to radio communications. However, there is no guarantee that interference will not occur in a particular installation. If this equipment does cause harmful interference to radio or television reception, which can be determined by turning the equipment off and on, the user is encouraged to try to correct the interference by one or more of the following measures:

- Reorient or relocate the receiving antenna.
- Increase the separation between the equipment and receiver.
- Connect the equipment into an outlet on a circuit different from that to which the receiver is connected.
- Consult the dealer or an experienced radio/TV technician for help.

A.2 FCC Statements:

1. This device complies with Part 15 of the FCC rules. Operation is subject to the following two conditions:
 - This device may not cause harmful interference,
 - and This device must accept any interference received, including interference that may cause undesired operation.
 2. This device and its antenna(s) must not be co-located or operating in conjunction with any other antenna or transmitter.
 3. Changes or modifications to this unit not expressly approved by the party responsible for compliance could void the user authority to operate the equipment.
 4. This compliance to FCC radiation exposure limits for an uncontrolled environment, the minimum of 20 cm separation distance shall be maintained between antenna and body.
-

If the FCC identification number is not visible when the module is installed inside another device, then the outside of the device into which the module is installed must also display a label referring to the enclosed module. This exterior label can use wording such as the following: "Contains Transmitter Module FCC ID: X2NBL-LW02-2"

The modular could be installed or integrated in mobile or fix devices only. This modular could not be installed in any portable device, for example, USB dongle like transmitters is forbidden.

when the module is installed inside another device, the user manual of this device must contain below warning statements;

1. This device complies with Part 15 of the FCC Rules. Operation is subject to the following two conditions:

(1) This device may not cause harmful interference.

(2) This device must accept any interference received, including interference that may cause undesired operation.

2. Changes or modifications not expressly approved by the party responsible for compliance could void the user's authority to operate the equipment