

# AWD Test Environment Setup Guide

## Hardware Requirement

- TV or monitor with HDMI interface
- Laptop:
  - CPU: intel CPU at least Core 2 duo 1.8g or AMD CPU
  - Ram: at least 2g
  - Wireless card: Realtek 8192DU USB dongle
  - OS: Win7 64 bit

Software package (Files included in the zip file [AWD\\_WIN7\\_TEST.zip](#))

- Folder "Driver\_Installation" – driver of Realtek 8192DU
- AWD.msi – AWD installation file (version: 2.0.18)
- install.img – firmware image of Rx (version: 0.5.7)
- vcredist\_x64.exe – Microsoft Visual C++ 2010 Redistributable x64
- vcredist\_x86.exe – Microsoft Visual C++ 2010 Redistributable x86

## Test environment setup procedure

- Connect Rx
- 1 Upgrade Rx to 0.5.7
    - 1.1 Prepare a USB stick , copy **install.img** into root and stick into Rx's USB port
    - 1.2 Connect Rx to a TV or Monitor via HDMI interface
    - 1.3 Hold reset button and then power on, check the Screen to be like this, then release reset button



1.4 Wait until upgrade process finish(**DO NOT POWER OFF WHILE UPGRADING**)



1.5 Rx will reboot automatically, wait until Ready to Connect screen. Check version on left-bottom corner, should be **0.5.7**



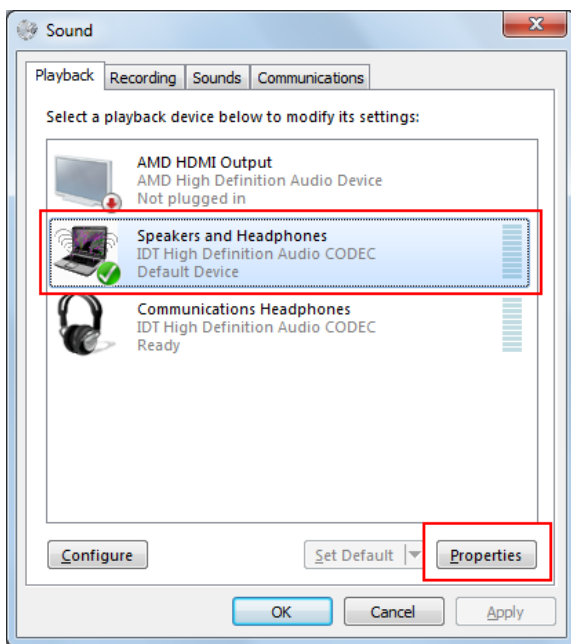
- Connect AWD

- 1 Change Audio Setting

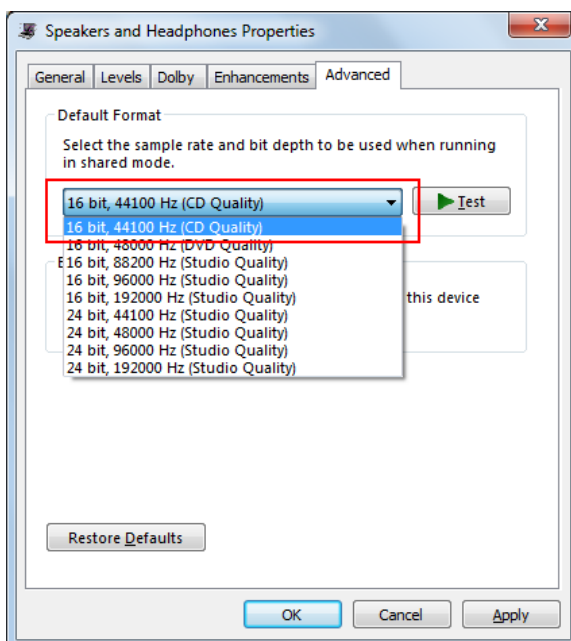
- 1.1 Right Click the speaker icon in the right-left corner, then choose Playback devices



- 1.2 In **Playback** tab, find **Speakers and Headphone**, then click **Properties**

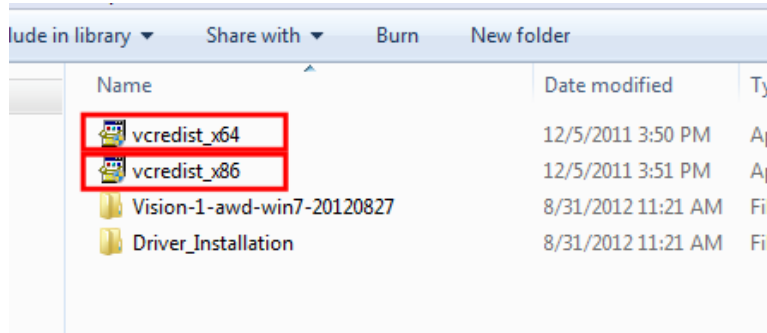


- 1.3 Switch to **Advanced** tab, from the dropdown list change the default format to **16 bit,44100Hz(CD Quality)**

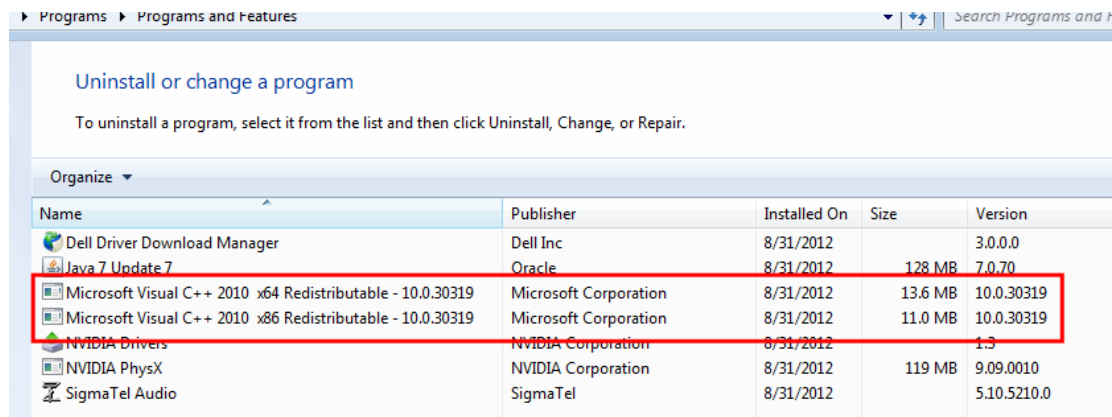


## 2 Install Microsoft Visual C++ 2010 Redistributable

### 2.1 Install Microsoft Visual C++ 2010 Redistributable x86 and x64 version

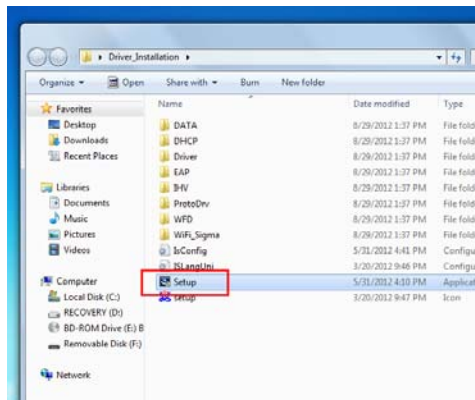


### 2.2 After finish, go to programs and features, check if it is installed correctly.

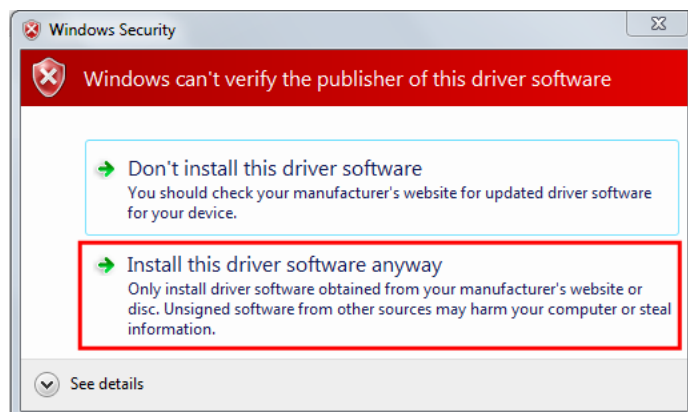


## 3 Install Wireless USB dongle driver

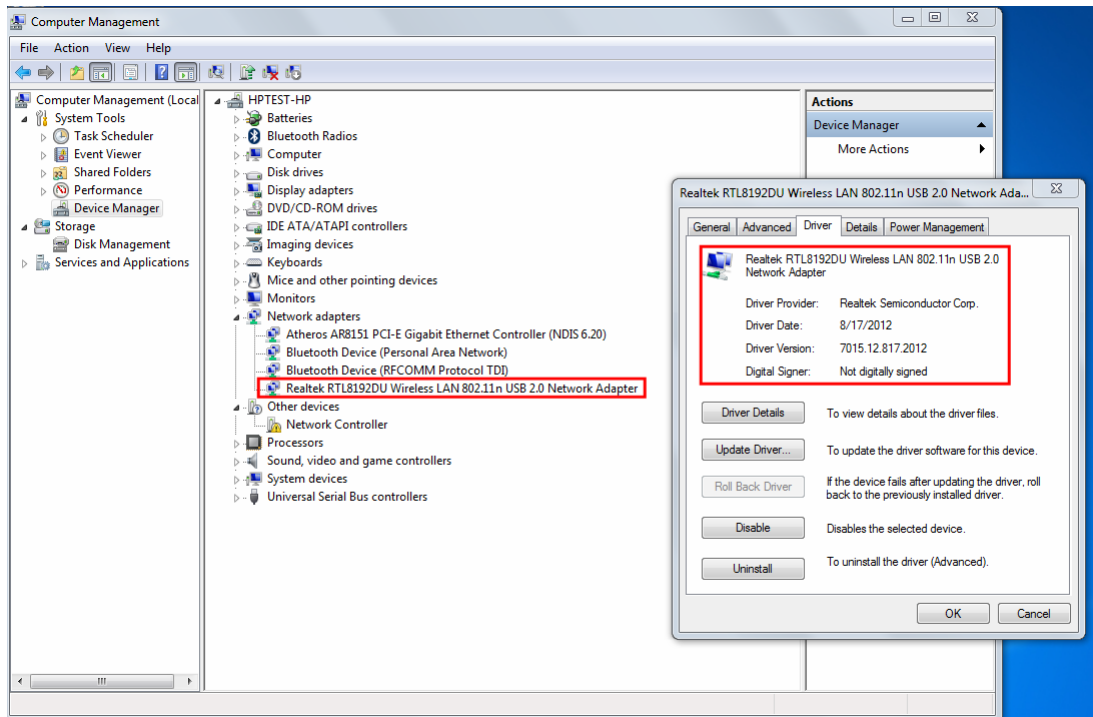
### 3.1 Double click on Setup, then follow the instructions



### 3.2 During the process, this window may appear several times, choose **Install this driver software anyway**

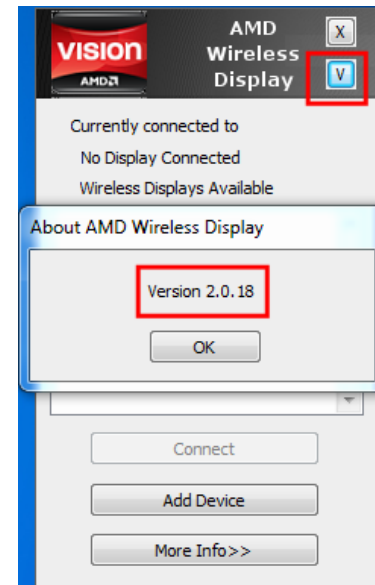
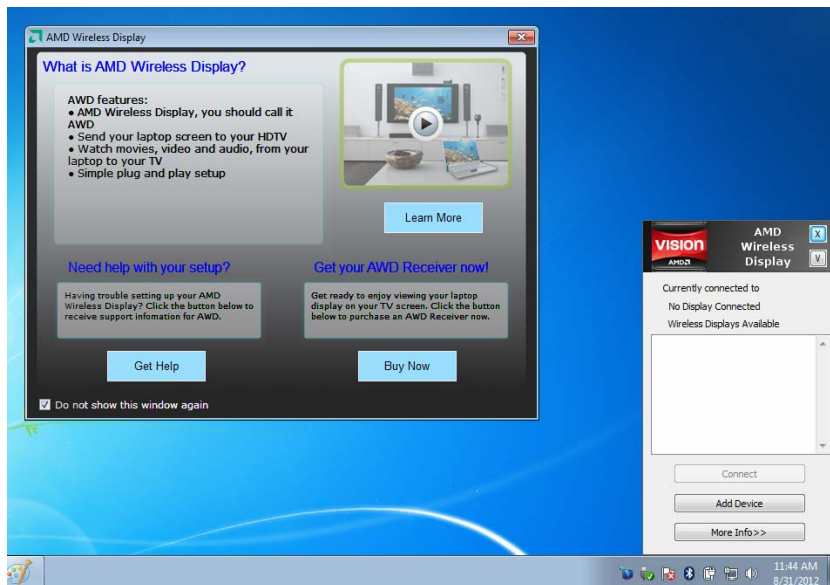


3.3 After reboot, plug-in the wireless USB dongle, and wait till it is ready to use. To check if it is installed correctly, go to Device manager, there should be a device **Realtek RTL8192DU Wireless LAN 802.11n USB 2.0 Network Adapter** in Network adapters, double click to open properties, check the Driver tab, the version should be **7015.12.817.2012**



#### 4 Install AWD

4.1 Install AWD, after finished, click on the icon, AWD Main window and Information window will appear (mark the checkbox in information window, then close it). Check version to be **2.0.18**

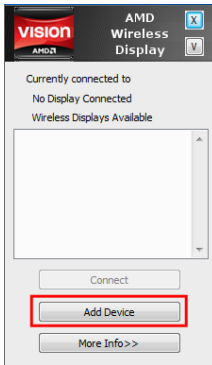




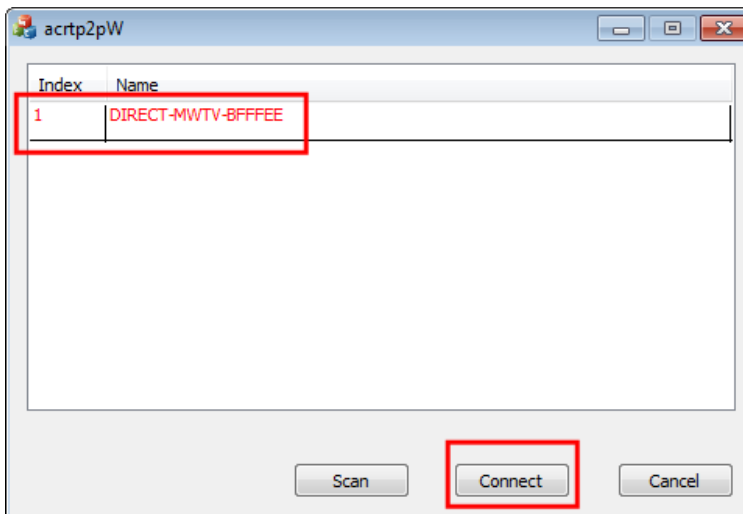
## 5 Connect AWD

### 5.1 PIN method (First time)

#### 5.1.1 Click **Add Device** button



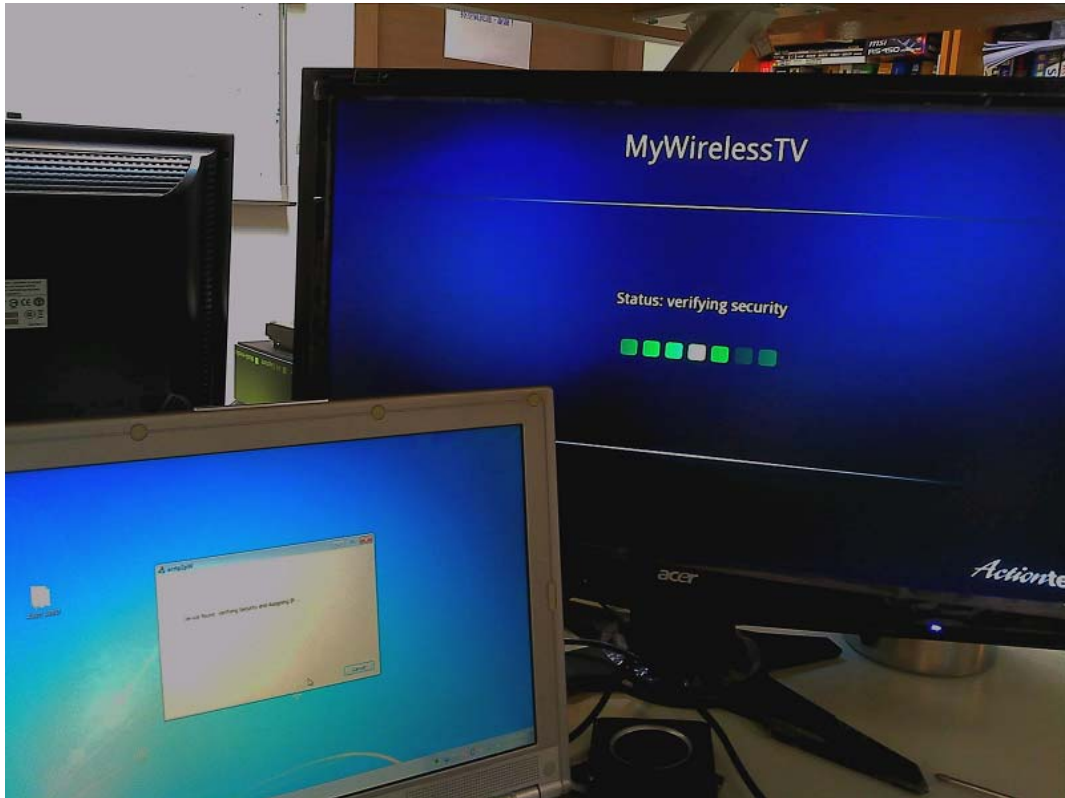
#### 5.1.2 Pair window will appear, scan and list Rx. Click on **Rx name** and then click **Connect**



#### 5.1.3 **PIN number** will shown on TV and a input window will shown on laptop, input the PIN number and then click **OK**



#### 5.1.4 Wait for the connection process



### 5.1.5 After finish, laptop screen will be displayed on TV

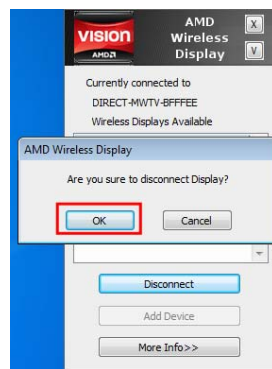
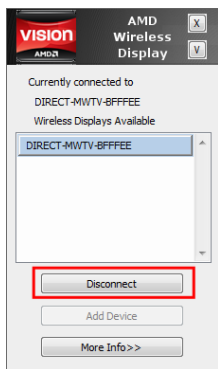


### 5.2 Persistent method

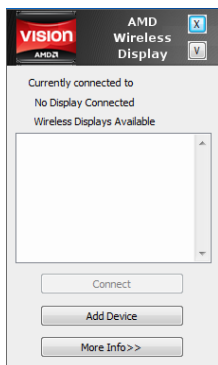
Same as PIN method except entering PIN. There is no need to enter PIN

- 6 Play a video clip repeatedly
- 7 Disconnect AWD

7.1 Click on AWD icon, AWD main window will appear. Click **Disconnect** button. Click **OK** when prompted



7.2 AWD and Rx will return to the status, ready for next connection.





## **FCC Statement:**

### **Federal Communication Commission Interference Statement**

This equipment has been tested and found to comply with the limits for a Class B digital device, pursuant to Part 15 of the FCC Rules. These limits are designed to provide reasonable protection against harmful interference in a residential installation. This equipment generates, uses and can radiate radio frequency energy and, if not installed and used in accordance with the instructions, may cause harmful interference to radio communications. However, there is no guarantee that interference will not occur in a particular installation. If this equipment does cause harmful interference to radio or television reception, which can be determined by turning the equipment off and on, the user is encouraged to try to correct the interference by one of the following measures:

- Reorient or relocate the receiving antenna.
- Increase the separation between the equipment and receiver.
- Connect the equipment into an outlet on a circuit different from that to which the receiver is connected.
- Consult the dealer or an experienced radio/TV technician for help.

FCC Caution: Any changes or modifications not expressly approved by the party responsible for compliance could void the user's authority to operate this equipment.

This device complies with Part 15 of the FCC Rules. Operation is subject to the following two conditions: (1) This device may not cause harmful interference, and (2) this device must accept any interference received, including interference that may cause undesired operation.

For product available in the USA/Canada market, only channel 1~11 can be operated. Selection of other channels is not possible.

This device and its antenna(s) must not be co-located or operation in conjunction with any other antenna or transmitter.

This device is going to be operated in 5.15~5.25GHz frequency range, it is restricted in indoor environment only.

## **IMPORTANT NOTE:**

### **Federal Communication Commission (FCC) Radiation Exposure Statement**

This EUT is compliance with SAR for general population/uncontrolled exposure limits in ANSI/IEEE C95.1-1999 and had been tested in accordance with the measurement methods and

procedures specified in OET Bulletin 65 Supplement C. This equipment should be installed and operated with minimum distance 0.5 cm between the radiator & your body.