

Table of Contents

	Page
I. Introduction	2
II. Contacting Technical Support	3
III. Installing the Adapter Hardware	4
IV. Installing the Adapter Software	6
Windows 98 SE	6
Windows ME	9
Windows 2000	11
V. Configuring the Adapter	15
Encryption	16
VI. Configuring the AdHoc Feature	17
VII. Configuring File and Printer Sharing	18
VIII. Troubleshooting	25
IX. Notices	27
X. Warranty	29

Proprietary Notice and Disclaimer

Unless otherwise noted, this document and the information herein disclosed are proprietary to Arizonex Electronics, Inc. the manufacturer. Any

xxxx-xxxx-000

Thank you for purchasing the *Actiontec* PCI 802.11b Wireless Adapter. This Wireless Adapter is easy to use and easy to setup. If you're tired of dealing with all those messy wires, just to connect a laptop to your home network, then take your networking to the next level with the *Actiontec* PCI 802.11b Wireless Adapter. You'll be able to share files, printers, and even your high-speed Internet access, wirelessly!

Package Contents

Make sure the following items are included in this package:

- PCI 802.11b Wireless Adapter
- *Actiontec* PCI Wireless Adapter Installation CD-ROM
- User's Manual and Quick Start Installation Guide

Minimum System Requirements

- One Pentium-class computer, running at 200 Mhz or higher (preferably 300 Mhz or higher)
- Microsoft Windows 98 Second Edition (SE), Microsoft Millennium Edition (Me), or Microsoft 2000 installed

Actiontec Electronics prides itself on making high-quality, durable, high-performance products. If you need assistance, the *Actiontec* Technical Support Department is available 6 am to 1 pm Mon - Sun (Central Time), to provide professional support.



Actiontec Electronics, Inc.
760 N. Mary Avenue
Sunnyvale, CA 94085

Phone: 1-719-884-8300 E-mail: techsupp@actiontec.com

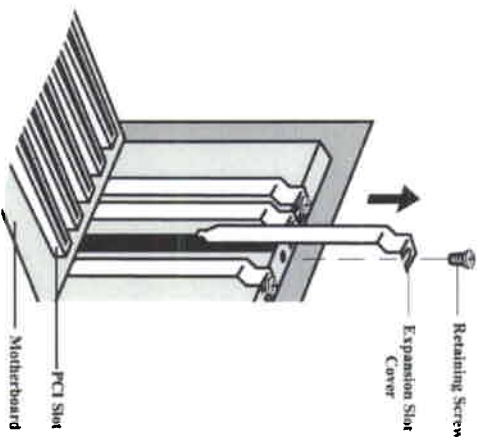
Installing the Adapter Hardware

1. Switch off the computer and all connected peripheral devices.
2. Unplug the computer power cord from the wall outlet.
3. Remove the computer's cover. Refer to the documentation that came with your computer for instructions.

CAUTION: Always discharge static electricity before handling the adapter. You can discharge static electricity by touching a grounded metal structure, or by using a commercially available grounding strap.

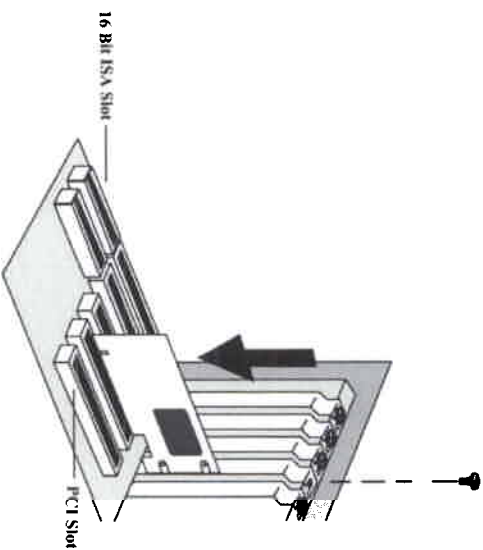
Also, ensure you are installing the adapter in a PCI slot, rather than an ISA slot. PCI slots are usually smaller and light-colored or white, while ISA slots are larger and dark-colored or black. If you are not familiar with computers and computer hardware, or cannot tell the difference between a PCI slot and ISA slot, refer to the documentation that came with your computer. You will severely damage your computer if you install the adapter in the wrong slot.

4. Remove the screw securing the expansion slot cover behind one of the computer's available PCI expansion slots. Lift the expansion slot cover out as shown in the figure below.



Note: The position of the expansion slots in your computer may differ from the illustrations shown in this manual, which show the slots in a vertical position. Regardless of the position of the expansion slots, the installation steps remain the same. Please refer to the documentation that came with your computer for more information about the expansion slot configuration of your computer.

5. Insert the Wireless Adapter into an available PCI expansion slot (with adapter's black antenna protruding out of the back of your computer), then press on the top edge of the adapter straight down until the adapter's connectors seat firmly in the PCI slot. Secure the adapter's faceplate with the screw you removed in Step 4, as shown in the following diagram. Make sure the antenna is not bent or otherwise damaged.

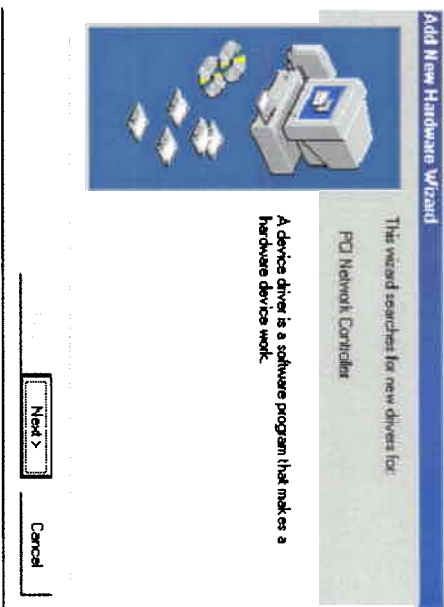


6. Put the cover back on the computer and secure it.
7. Make sure all power switches are in the OFF position, then reconnect the power cables to the computer and its peripherals.

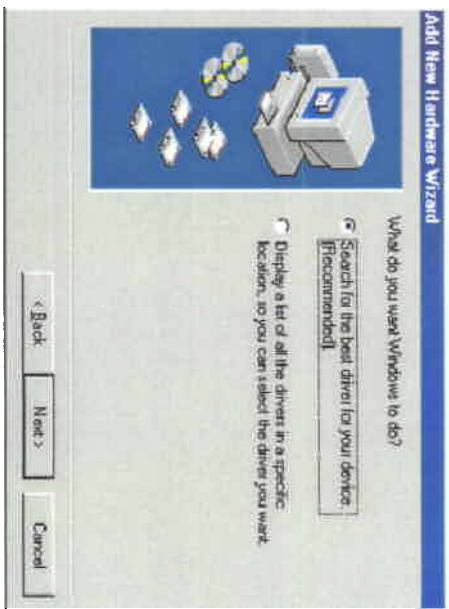
Installing the Adapter Software

Windows 98 SE

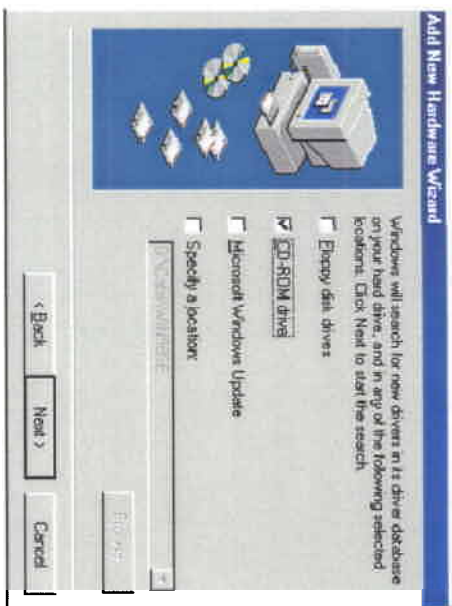
1. After you install the PCI Wireless Adapter, turn on your computer. The "Add New Hardware Wizard" window appears. Click Next.



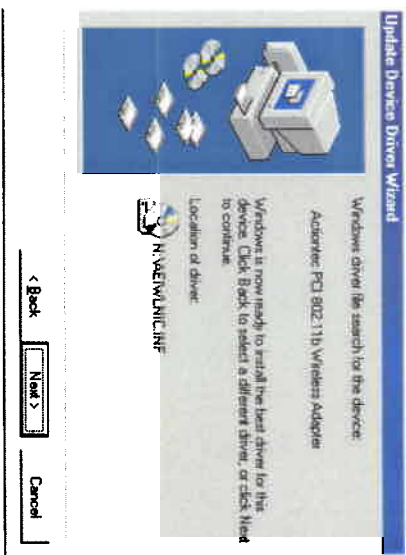
2. In the next window, select Search for the best driver for your device and then click the Next button.



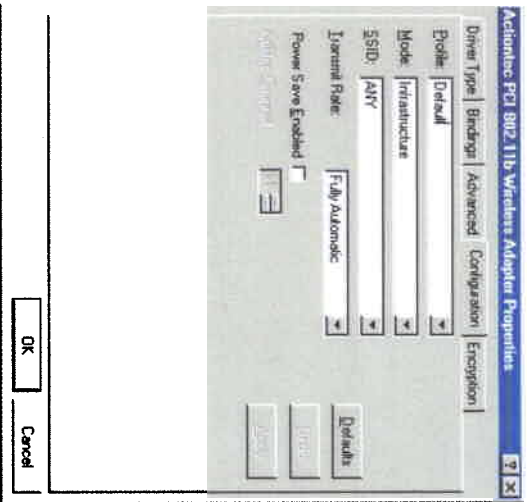
3. Insert the *Actiontec* PCI Wireless Adapter Installation CD into your CD-ROM drive. Select CD-ROM Drive and then click Next.



4. Windows locates the "AEIWLNIC.inf" driver file. Click Next to install the driver software.



5. The "Actiontec PCI 802.11b Wireless Adapter Properties" window appears. (Note: The "SSID" must be the same as the "ESSID" on your home gateway or access point. See the documentation that came with your home gateway or access point for more information.) Click **OK** to complete the installation process.



6. The installation is complete. Click **Finish**.

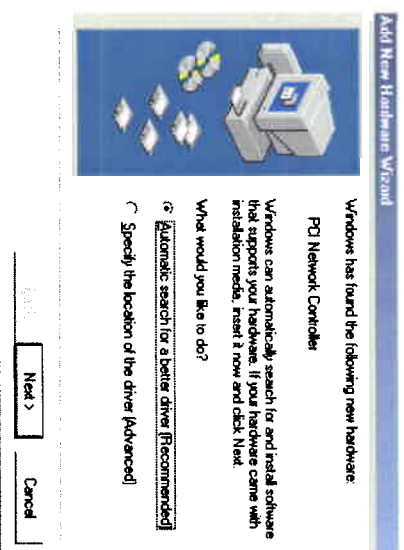


7. To activate the Wireless Adapter's software, you must restart your computer. Click **OK** in the "System Settings Change" window to restart. If this window does not appear, restart your computer manually.

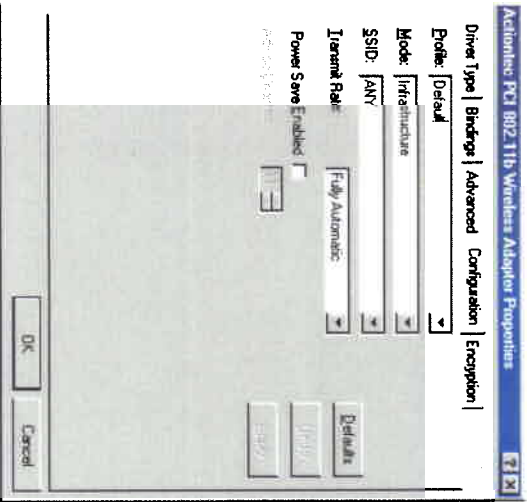


Windows Me

1. After you install the Wireless Adapter and turn on your computer, Windows displays an "Add New Hardware Wizard" window. Insert the *Action!tec* PCI Wireless Adapter Installation CD in the CD-ROM drive, then click **Automatic search for a better driver (Recommended)**. Click the **Next** button.



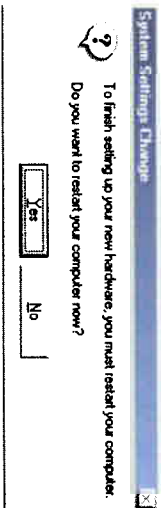
2. The "Actiontec PCI 802.11b Wireless Adapter Properties" window appears. (Note: The "SSID" must be the same as the "ESSID" on your home gateway or access point. See the documentation that came with your home gateway or access point to access its "ESSID" value.) Click OK.



3. The installation is complete. Click Finish.

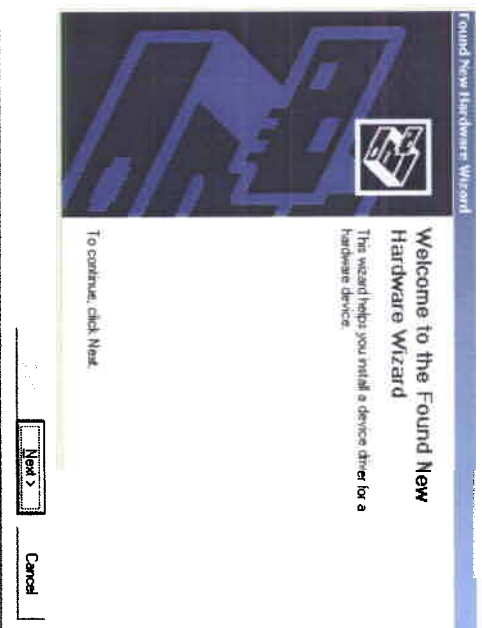


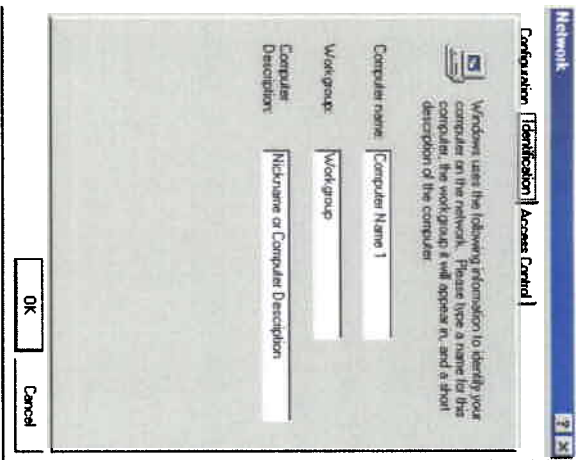
4. To activate the Wireless Adapter's software, you must restart your computer. Click OK in the "System Settings Change" window to restart. If this window does not appear, restart your computer manually.



Windows 2000

1. After you install the PCI 802.11b Wireless Adapter and turn on your computer, The "Add New Hardware Wizard" window appears. Click the Next button.





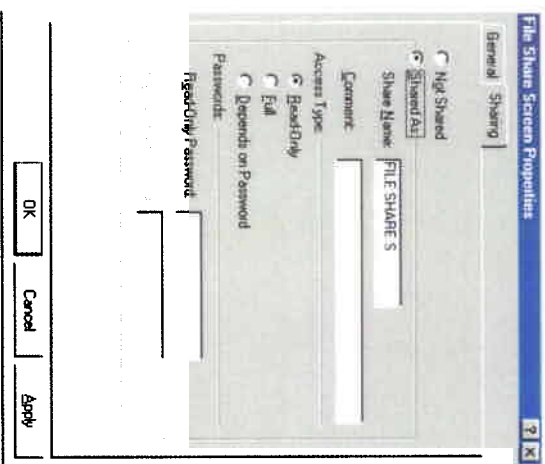
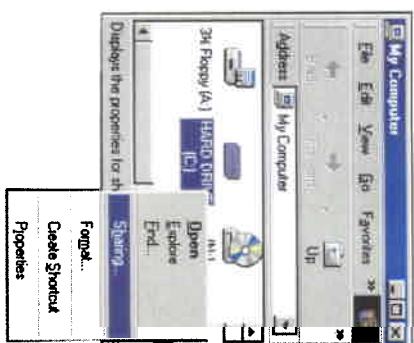
7. Click on the Configuration tab. In the "Primary Network Logon:" text box, located just above the "File and Print Sharing" button, ensure Client for Microsoft Networks is selected (see the first figure on page 18). If not, click the down arrow and select it from the list that appears. Click OK.

8. The "System Settings Change" windows appears. Click Yes to restart the computer. If you do not see this screen, restart your computer manually. After your computer restarts, you will be asked to supply a user name and a password. Enter the information in the respective text boxes and write it down, since you'll need it to access your network.



9. After your computer restarts and you have entered a password and user name, enable a file or drive for sharing by locating the file or drive you want to share. (The easiest way to do this is by using Windows Explorer). Right-click on the File or Drive you want to share. From the list that appears, select Sharing.

10. The "File Share Screen Properties" window appears. Select the Sharing tab, and then click Shared As. This will enable other users on your network to see the file or drive selected. Select Access Type, as explained below.

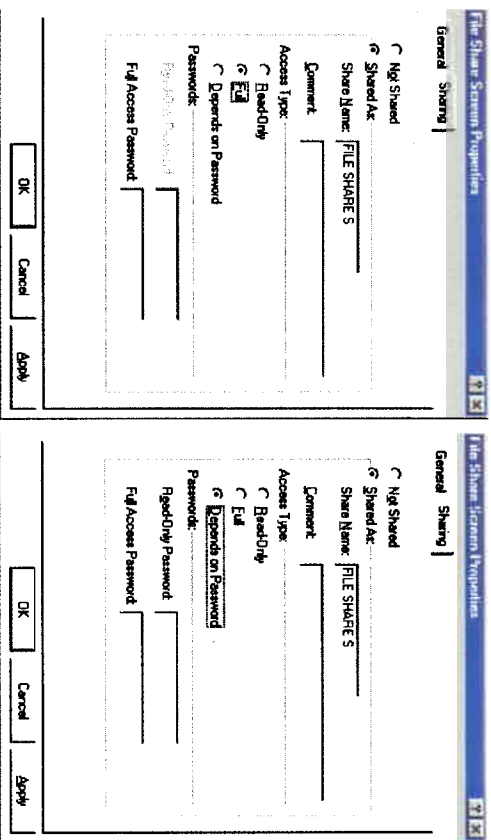


Read Only: Allows other users on your network to view the file or drive you select, but not modify it in any way. You can further restrict their privileges by entering a password in the appropriate field.

Full: Allows users on your network to read, modify, move, and delete any information in the shared drive or file. You can restrict their privileges by entering a user name and password.

Depends on Password: Allows you to set both Read Only and Full Access files on the shared file or drive. The level of access will depend on the passwords you enter in the appropriate field.

When you are finished, click **Apply**, then **OK**.



11. To share your printer, select **Start**, then **Settings**, and then **Printers**.

12. Right-click on the printer you want to share. Select **Sharing** from the list that appears.

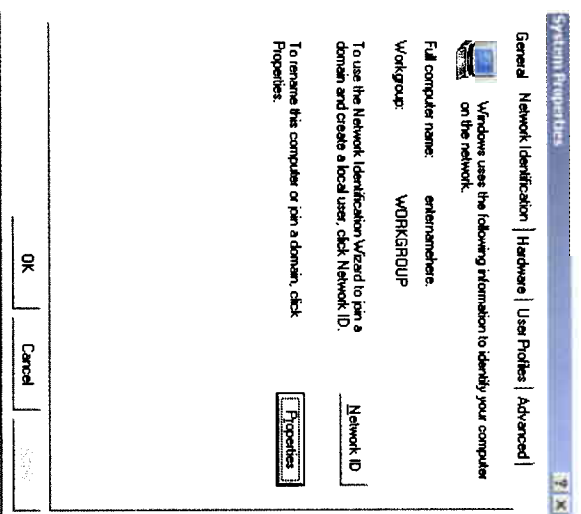


13. Enable sharing by selecting **Share As**. A default name for the printer will be created in the **Share Name** text box. Set a password for the printer at this time if you want to restrict printer use on the network. Set the default printer settings by modifying information on the other tabs of this window.

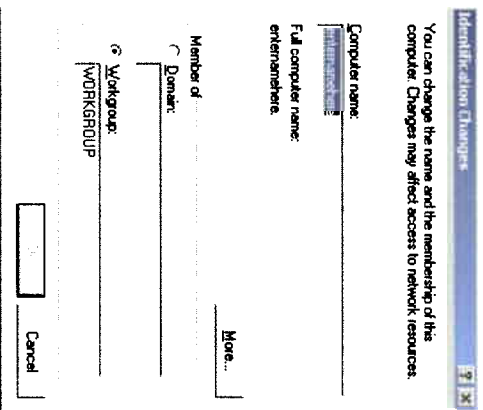
Windows 2000

1. After you have installed and configured your **Wireless Adapter**, **Windows 2000** will automatically enable file and print sharing for your computer. The only item that needs to be changed is your **Workgroup** settings. All the computers on your network must have the same **Workgroup** name. To check or change the **Workgroup** name, right-click on the **My Computer** icon on your desktop and select **Properties** from the list that appears.

2. The "System Properties" window appears, as shown below. Click on the **Network Identification** tab. If the "Workgroup" name is the same as all other computers on your network, click **OK**. If not, select **Properties**.



3. The "Identification Changes" window appears. In the **Computer Name:** text box, enter a name for your computer that is different from all other computer names on the network. In the **Workgroup** text box, enter the network name, which is the same for every computer on your network. Click **OK** to return to the "Network Properties" window, then click **OK** again to restart your computer.



Troubleshooting

You are experiencing slow or erratic network performance.

The antenna may not be receiving a strong signal. Keep the area around the antenna clear from materials that could block radio transmission, such as metal objects, electronic devices, and cordless telephones.

Changing the direction of the antenna may strengthen the wireless signal. Move your computer a few inches to receive a stronger signal. If this doesn't work, you may have to move your computer closer to the home gateway or access point.

Check your home gateway or access point to ensure that it is operating correctly. Make sure that there are no loose connections or cabling problems, and that the home gateway's or access point's antenna is working properly. You may have to consult the documentation that came with your home gateway or access point to check its operation.

You cannot connect to your home gateway or access point.

Make sure that the "SSID" value of the Wireless Adapter is the same as the "ESSID" value of your home gateway or access point. See page 8 (Windows 98 SE), page 10 (Windows Me), or page 13 (Windows 2000) for more information.

Make sure that the encryption settings of your Wireless Adapter match the encryption settings of your home gateway or access point. See page 16 for more information. You may have to consult the documentation that came with your home gateway or access point to get information concerning the unit's encryption capabilities.

There is no network connection when the computer becomes active again after being in sleep mode

Restart the computer to restore the connections.

Installation program does not finish. The driver fails to load.

There may be a resource conflict. Use the Device Manager to resolve resource conflicts. Select **System** from the Control Panel, and then click the **Device Manager** tab.

The Wireless Adapter installs as an unknown device.

The Windows Add Hardware Wizard was unable to locate the Wireless

Adapter drivers. You may have had no CD or the wrong CD inserted in the CD-ROM drive, or the Installation CD may not have been ready when the wizard looked for the drivers. To solve this problem, remove the Wireless Adapter from your computer and repeat the installation procedure. Make sure that you insert the Installation CD when the procedure indicates, and that you wait for it to come up to speed in the drive.

Notices

FCC Regulations

The following statements are provided in accordance with the Federal Communications Commission (FCC) regulations. Please read these statements carefully before installing your modem.

FCC Part 68 Requirements

This equipment complies with Part 68 of the FCC Rules. On the bottom of the modem is a label that contains, among other information, the FCC Registration Number and Ringer Equivalence Number (REN) for this equipment. If requested, this information must be given to the telephone company.

The REN is used to determine the maximum number of devices connected to your telephone line that will ring in response to an incoming call. In most, but not all, areas, the total REN of devices connected to a line should not exceed five (5). To find out the total permitted in your area, contact your local telephone company.

If your telephone equipment causes harm to the telephone network, the telephone company can discontinue your service temporarily. If possible, the company will notify you in advance. But if advance notice is not practical, you will be notified as soon as possible. You will be informed of your right to file a complaint with the FCC.

Your telephone company can make changes in its facilities, equipment, operations, or procedures that could affect the operation of your equipment. If so, you will be notified in advance so you can make the changes needed to maintain uninterrupted service.

If you experience trouble with this equipment, please contact the manufacturer at the address given in this manual. The telephone company may ask that you disconnect this equipment from the network until the problem has been corrected or until you are sure that the equipment is not malfunctioning.

This equipment may not be used on public coin service provided by the telephone company. Connection to party lines is subject to state tariffs.

Canadian Department of Communications (CDOC)

Requirements for End Users:

Note: The Canadian Department of Communications label identifies certified equipment. This certification means the equipment meets certain telecommunications network requirements. The Department does not guarantee the equipment will operate to the user's satisfaction.

Before installing this equipment, users should ensure that connection to the line is allowed by the local telecommunications company. The equipment must also be installed using an acceptable method of connection. In some cases, the company's inside wiring associated with a single line individual service may be extended by means of a telephone extension cord. Compliance with the above conditions may not prevent degradation of service in certain situations.

Repairs to certified equipment should be made by an authorized Canadian maintenance facility designated by the supplier. Any repairs or alterations made by the user to this equipment, or equipment malfunctions, may give the telecommunications company cause to request the user to disconnect the equipment.

Users should ensure for their own protection that the electrical ground connections of the power utility, telephone lines, and internal metallic water pipe system, if present, are connected together. This precaution may be particularly important in rural areas.

CAUTION: Users should not attempt to make such connections themselves, but should contact the appropriate electrical inspection authority, or electrician, as appropriate.

Warranty

Actiomec Electronics, Inc., Limited Warranty

Hardware: *Actiomec Electronics, Inc.*, warrants to the end user ("Customer") that this hardware product will be free from defects in workmanship and materials, under normal use and service, for twelve (12) months from the date of purchase from *Actiomec Electronics* or its authorized reseller.

Actiomec Electronics' sole obligation under this express warranty shall be, at *Actiomec's* option and expense, to repair the defective product or part, deliver to Customer an equivalent product or part to replace the defective item, or if neither of the two foregoing options is reasonably available, *Actiomec Electronics* may, in its sole discretion, refund to Customer the purchase price paid for the defective product. All products that are replaced will become the property of *Actiomec Electronics, Inc.*,. Replacement products may be new or reconditioned. *Actiomec Electronics* warrants any replaced or repaired product or part for ninety (90) days from shipment, or the remainder of the initial warranty period, whichever is longer.

Software: *Actiomec Electronics* warrants to Customer that each software program licensed from it will perform in substantial conformance to its program specifications, for a period of ninety (90) days from the date of purchase from *Actiomec Electronics* or its authorized reseller. *Actiomec Electronics* warrants the media containing software against failure during the warranty period. The only updates that will be provided are at the sole discretion of *Actiomec Electronics* and will only be available for download at the *Actiomec* Web site, www.actiomec.com. *Actiomec Electronics* sole obligation under this express warranty shall be, at *Actiomec Electronics'* option and expense, to refund the purchase price paid by Customer for any defective software product, or to replace any defective media with software which substantially conforms to applicable *Actiomec Electronics* published specifications. Customer assumes responsibility for the selection of the appropriate applications program and associated reference materials. *Actiomec Electronics* makes no warranty or representation that its software products will meet Customer's requirements or work in combination with any hardware or applications software products provided by third parties, that the operation of the software products will be uninterrupted or error free, or that all defects in the software products will be corrected. For any third-party products listed in the *Actiomec Electronics* software product documentation or specifications as being compatible, *Actiomec Electronics* will make reasonable efforts to provide compatibility, except where the noncompatibility is caused by a "bug" or defect in the third party's product or from use of the software product not in accordance with *Actiomec Electronics* published specifications or User Guide.

THIS ACTIOMECELECTRONICS PRODUCT MAY INCLUDE OR BE BUNDLED WITH THIRD-PARTY SOFTWARE, THE USE OF WHICH IS

GOVERNED BY A SEPARATE END-USER LICENSE AGREEMENT. THIS ACTIONTEC ELECTRONICS WARRANTY DOES NOT APPLY TO SUCH THIRD-PARTY SOFTWARE. FOR THE APPLICABLE WARRANTY, PLEASE REFER TO THE END-USER LICENSE AGREEMENT GOVERNING THE USE OF SUCH SOFTWARE.

Obtaining Warranty Service: Customer may contact *Actiontec Electronics* Technical Support Center within the applicable warranty period to obtain warranty service authorization. Dated proof of purchase from *Actiontec Electronics* or its authorized reseller may be required. Products returned to *Actiontec Electronics* must be pre-authorized by *Actiontec Electronics* with a Return Merchandise Authorization (RMA) number marked on the outside of the package, and sent prepaid and packaged appropriately for safe shipment, and it is recommended that they be insured or sent by a method that provides for tracking of the package. The repaired or replaced item will be shipped to Customer, at *Actiontec Electronics'* expense, not later than thirty (30) days after *Actiontec Electronics* receives the defective product. Return the product to:

In the United States:
Actiontec Electronics, Inc
760 North Mary Avenue
Sunnyvale, CA 94085

Actiontec Electronics shall not be responsible for any software, firmware, information, or memory data, or Customer information contained in, stored on, or integrated with any products returned to *Actiontec Electronics* for repair, whether under warranty or not.

WARRANTIES EXCLUSIVE: IF AN ACTIONTEC ELECTRONICS' PRODUCT DOES NOT OPERATE AS WARRANTED ABOVE, CUSTOMER'S SOLE REMEDY FOR BREACH OF THAT WARRANTY SHALL BE REPAIR, REPLACEMENT, OR REFUND OF THE PURCHASE PRICE PAID, AT ACTIONTEC ELECTRONICS' OPTION, TO THE FULL EXTENT ALLOWED BY LAW. THE FOREGOING WARRANTIES AND REMEDIES ARE EXCLUSIVE AND IN LIEU OF ALL OTHER WARRANTIES, TERMS OR CONDITIONS, EXPRESS OR IMPLIED, EITHER IN FACT OR BY OPERATION OF LAW, STATUTORY OR OTHERWISE, INCLUDING WARRANTIES, TERMS OR CONDITIONS OF MERCHANTABILITY, FITNESS FOR A PARTICULAR PURPOSE, SATISFACTORY QUALITY, CORRESPONDENCE WITH DESCRIPTION, AND NON-INFRINGEMENT, ALL OF WHICH ARE EXPRESSLY DISCLAIMED. ACTIONTEC ELECTRONICS NEITHER ASSUMES NOR AUTHORIZES ANY OTHER PERSON TO ASSUME FOR IT ANY OTHER LIABILITY IN CONNECTION WITH THE SALE, INSTALLATION, MAINTENANCE OR USE OF ITS PRODUCTS.

ACTIONTEC ELECTRONICS SHALL NOT BE LIABLE UNDER THIS WARRANTY IF ITS TESTING AND EXAMINATION DISCLOSE THAT THE ALLEGED DEFECT OR MALFUNCTION IN THE PRODUCT DOES NOT EXIST OR WAS CAUSED BY CUSTOMER'S OR ANY THIRD PERSON'S MISUSE, NEGLIGENCE, IMPROPER INSTALLATION OR TESTING, UNAUTHORIZED ATTEMPT TO OPEN, REPAIR OR MODIFY THE PRODUCT, OR ANY OTHER CAUSE BEYOND THE RANGE OF THE INTENDED USE, OR BY ACCIDENT, FIRE, LIGHTNING, OTHER HAZARDS, OR ACTS OF GOD.

LIMITATION OF LIABILITY: TO THE FULL EXTENT ALLOWED BY LAW, ACTIONTEC ELECTRONICS ALSO EXCLUDES FOR ITSELF AND ITS SUPPLIERS ANY LIABILITY, WHETHER BASED IN CONTRACT OR TORT (INCLUDING NEGLIGENCE), FOR INCIDENTAL, CONSEQUENTIAL, INDIRECT, SPECIAL, OR PUNITIVE DAMAGES OF ANY KIND, OR FOR LOSS OF REVENUE OR PROFITS, LOSS OF BUSINESS, LOSS OF INFORMATION OR DATA, OR OTHER FINANCIAL LOSS ARISING OUT OF OR IN CONNECTION WITH THE SALE, INSTALLATION, MAINTENANCE, USE, PERFORMANCE, FAILURE, OR INTERRUPTION OF ITS PRODUCT, EVEN IF ACTIONTEC ELECTRONICS OR ITS AUTHORIZED RESELLER HAS BEEN ADVISED OF THE POSSIBILITY OF SUCH DAMAGES, AND LIMITS ITS LIABILITY TO REPAIR, REPLACE OR REFUND THE PURCHASE PRICE PAID, AT ACTIONTEC ELECTRONICS' OPTION. THIS DISCLAIMER OF LIABILITY FOR DAMAGES WILL NOT BE AFFECTED IF ANY REMEDY PROVIDED HEREIN SHALL FAIL OF ITS ESSENTIAL PURPOSE.

Disclaimer: Some countries, states, or provinces do not allow the exclusion or limitation of implied warranties or the limitation of incidental or consequential damages for certain products supplied to consumers, or the limitation of liability for personal injury, so the above limitations and exclusions may be limited in their application to you. When the implied warranties are not allowed to be excluded in their entirety, they will be limited to the duration of the applicable written warranty. This warranty gives you specific legal rights which may vary depending on local law.

Dispute Resolution: The customer may contact the Director of Technical Support in the event the Customer is not satisfied with *Actiontec Electronics* response to the complaint. In the event that the Customer is still not satisfied with the response of the Director of Technical Support, the Customer is instructed to contact the Director of Marketing. In the event that the Customer is still not satisfied with the response of the Director of Marketing, the Customer is instructed to contact the Chief Financial Officer and/or President.

Governing Law: This Limited Warranty shall be governed by the laws of the State of California, U.S.A., excluding its conflicts of laws and principles, and excluding the United Nations Convention on Contracts for the International Sale of Goods.

Regulatory Compliance Notices Class B Equipment

This equipment has been tested and found to comply with the limits for a Class B digital device, pursuant to Part 15 of the FCC Rules. These limits are designed to provide reasonable protection against harmful interference in a residential installation. This equipment generates, uses, and can radiate radio frequency energy and, if not installed and used in accordance with the instructions, may cause harmful interference to radio communications. However, there is no guarantee that interference will not occur in a particular installation. If this equipment does cause harmful interference to radio or television reception, which can be determined by turning the equipment off and on, the user is encouraged to try to correct the interference by one or more of the following measures:

- Reorient or relocate the receiving antenna.
- Increase the separation between the equipment and receiver.
- Connect the equipment into an outlet on a circuit different from that to which the receiver is connected.
- Consult the dealer or an experienced radio or television technician for help.

Modifications

The FCC requires the user to be notified that any changes or modifications made to this device that are not expressly approved by Actiontec Electronics, Inc may void the user's authority to operate the equipment.

Declaration of conformity for products marked with the FCC logo –
United States only

This device complies with Part 15 of the FCC Rules. Operation is subject to the following two conditions:

- (1) This device may not cause harmful interference, and
- (2) This device must accept any interference received, including interference that may cause undesired operation.

"IMPORTANT NOTE: To comply with FCC RF exposure compliance requirements the antenna used for this transmitter must be installed to provide a separation distance of at least 20 cm from all persons and must not be co-located or operating in conjunction with any other antenna or transmitter."

For questions regarding your product, or the FCC declaration, contact:

Actiontec Electronics, Inc
760 North Mary Ave,
Sunnyvale, CA 94086
United States
Tel: (408) 752-7700
Fax: (408) 541-9005