

D-Link®

with
SMART BEAM™

ampliFi
N+
300



SmartBeam technology
for whole home coverage



SharePort for sharing
any USB device



4 Gigabit Ethernet ports for
great wired connectivity

ampliFi™ Whole Home Router 1000

Wi-Fi coverage to the farthest corners of your home

DIR-645

Whole Home Router 1000

The D-Link Whole Home Router 1000 is designed to enhance your wireless signal and extend coverage. SmartBeam™ technology provides wireless signals to every corner of your house¹ by directly beaming bandwidth to your wireless devices. Since SmartBeam works in real time, you're free to move around with your laptop or iPad® without losing this superior signal.

Patented sectorized
antenna design for superior
SmartBeam™ performance



USB

USB Port
Connect a USB Printer
or Storage Device

1

2

3

4

INTERNET

INTERNET

5V=2.5A

4 Gigabit Ports
Connect up to 4 devices

Internet Port
Plug your Internet cable in here

Give your wireless devices the bandwidth they crave. Give them SmartBeam.

Build a wireless home network capable of delivering the bandwidth to handle HD video streams, large media file downloads, and online gaming to multiple devices, simultaneously. SmartBeam uses 6 multi-directional antennas to find and track individual devices, then focus beams of bandwidth to those devices, ensuring a seamless connection anywhere in the home. Ideal for large homes or small offices where concrete walls, successive floors in multi-storied buildings, or other architectural impediments can weaken a wireless signal, SmartBeam is designed to handle large home networks and can even power devices across large backyards. What's more, this tracks mobile devices in real-time so the Whole Home Router 1000 supplies this boosted bandwidth to your iPad or smartphones as you move around. Eliminate wireless dead spots and unleash comprehensive whole-home coverage on all your devices, all at once – the Whole Home Router 1000 provides uninterrupted connectivity to any device, anywhere in your home or small office.

Now Playing: Everything

The Whole Home Router 1000 has not only been engineered to deliver seamless connectivity to your favorite wireless devices, but comes equipped with 4 high-performance Gigabit Ethernet ports to power your digital entertainment system as well. HDTVs, the Boxee Box by D-Link, Blu-Ray Players, xBox 360®, Playstation 3 – Connect your favorite performance devices and give them the 300 Mbps speed and advanced QoS bandwidth prioritization they need for seamless iPad® HD video streams, high-performance gaming, and VOIP calls without annoying glitches or lags. Connect printers, NAS servers - even security cameras - Shareport Plus USB 2.0 lets you stream from any USB device. There's even a SharePort App for Android® and iPhone® OS for online gaming support like OnLive.

Advanced Home Networking. Simple Setup

High-performance entertainment devices. Wireless signals anywhere in your home. Multiple laptops. Network storage systems. iPads, iPhones – It used to be that designing a home network capable of handling so many devices required some serious hardware and some seriously messy installation. Not with Amplifi™- the Whole Home Router 1000 has not only been engineered with the power to handle all of your digital demands, but with the smarts to put it at the tip of your fingers. Whole Home Routers offer Wireless G backwards-compatibility and Wi-PnP technology for simple wireless connections through a USB drive. IPv6 allows for intelligent self-detect and router setup.

128-bit Security Encryption

The Whole Home Router 1000 protects your network with 128-bit AES data security encryption – the same technology used in E-commerce or online banking. Create your own network name and password or put it at the tip of your fingers with 'Push Button Security' standard on every Amplifi device. With hassle-free plug and play installation, and advanced Wi-Fi protected setup, the Whole Home Router 1000 is not only one of the fastest routers available, its also one of the safest.

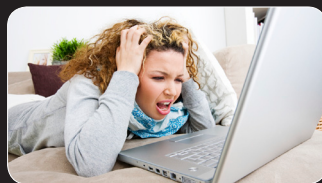
Get Ready for the Future - IPv6 Equipped

With the growing number of Internet-enabled applications requiring IP addresses, the supply of IP addresses under the current Internet Protocol version 4 (IPv4) system has already been exhausted. The IPv6 protocol solves this network addressing exhaustion by creating more IP addresses, but migration from IPv4 to IPv6 is not necessarily automatic. No worries - This D-Link product is IPv6 Certified and ready for the future.

The Whole Home Router is great for:



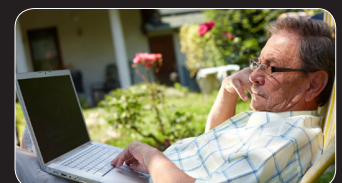
Large Homes



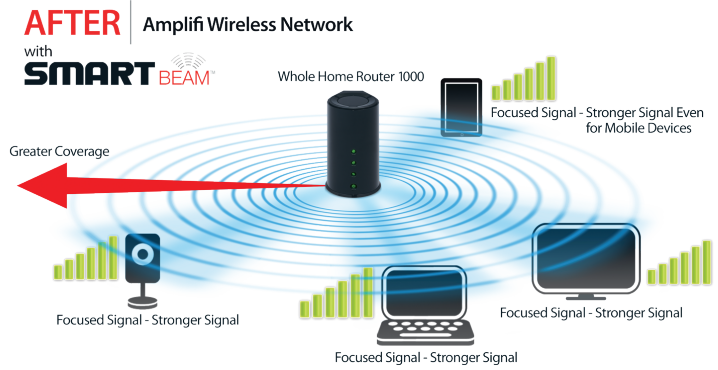
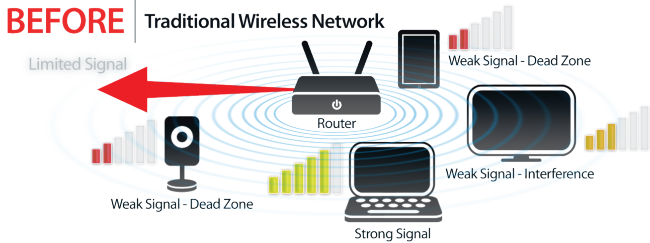
Homes or offices with cold or dead spots



Mobile devices like iPads and tablets



Outdoor wireless connectivity¹



Features

- + 4 Gigabit Ethernet Ports¹
- + IEEE 802.11n and 802.11g Compliant
- + WPS (Wi-Fi® Protected Setup™) for simple Push-Button Wireless Network Configuration
- + Supports Secure Wireless Encryption Using WPA™ or WPA2™
- + Parental Controls powered by OpenDNS
- + UPnP® Support
- + 24/7 Basic Installation Support²
- + 1-Year Limited Warranty³

Think Green

While this may look like your average router, it's not. This is a D-Link Green router, which is as good for your wallet as it is for the environment. The Whole Home Router 1000 is designed to conserve energy, protect our environment from harmful substances and reduce waste by using recyclable packaging. D-Link Green devices provide eco-friendly alternatives without compromising performance. To learn more, visit www.dlinkgreen.com.

D-Link Green™ Technology²

- + Power saving by link status
- + Power saving by cable length
- + Power saving by wireless LAN scheduling
- + Complies with the EU RoHS directive that restricts the use of certain hazardous materials
- + Uses soy ink and recyclable packaging to reduce harmful environmental waste

STANDARDS

- + IEEE 802.11n
- + IEEE 802.11g
- + IEEE 802.3
- + IEEE 802.3u
- + IEEE 802.3ab

DEVICE INTERFACE

- + 4 Gigabit LAN Ports
- + 1 Gigabit WAN Port
- + Push Button (for Wi-Fi Protected Setup™)
- + USB Port (SharePort™ Plus)
- + Power Button

ANTENNA TYPE

- + Smartbeam

SECURITY

- + Wi-Fi Protected Access™ (WPA, WPA2)®
- + Wi-Fi Protected Setup (WPS) - Push Button

ADVANCED FIREWALL FEATURES

- + Network Address Translation (NAT)
- + Stateful Packet Inspection (SPI)
- + VPN Pass-through / Multi-sessions PPTP / L2TP / IPSec

Technical Specifications

DEVICE MANAGEMENT

- + Internet Explorer® v7 or Later; Mozilla Firefox® v3.0 or Later; or other Java-enabled Browsers

LEDs

- + Internet
- + WLAN
- + WPS
- + Power

CERTIFICATIONS

- + FCC Class B
- + IC
- + Wi-Fi®
- + WPS - PBC/PIN

DIMENSIONS

- + Item (WxDxH): 4.6" x 7.6" x 1.2" (117mm x 190mm x 97mm)

WEIGHT

- + Item: 0.7 lbs
- + Packaging: 2.0 lbs

WARRANTY

- + 1-Year Limited³

¹ Maximum wireless signal rate derived from IEEE Standard 802.11 specifications. Actual data throughput will vary. Network conditions and environmental factors, including volume of network traffic, buildings materials and construction, and network overhead, lower actual data throughput rate. Environmental factors will adversely affect wireless signal range. Wireless range and speed rates are D-Link RELATIVE performance measurements based on the wireless range and speed rates of a standard Wireless G product from D-Link. Maximum throughput based on D-Link draft Wireless N devices.

² D-Link Green references contained herein apply to Hardware version A3 or later. SharePort references contained herein apply to Firmware version 1.21 or later.

³ 1-Year Limited Warranty available only in the USA and Canada.

⁴ Computer must adhere to Microsoft's recommended System Requirements.

⁵ The software included with this product is not Mac-compatible.

⁶ Latest software and documentation are available at <http://support.dlink.com>.

All references to speed and range are for comparison purposes only. Product specifications, size, and shape are subject to change without notice, and actual product appearance may differ from that depicted herein.

© 2011 D-Link Corporation/D-Link Systems, Inc. All rights reserved. D-Link, the D-Link logo, D-Link Green, and the D-Link Green logo are trademarks or registered trademarks of D-Link Corporation or its subsidiaries in the United States and/or other countries. Other trademarks or registered trademarks are the property of their respective owners.



For more help deciding which product to choose, scan this QR code with your Smartphone

DIR-645

Package Contents

- + Whole Home Router 1000 (DIR-645)
- + CAT5 Ethernet Cable
- + CD-ROM⁶
- + Power Adapter
- + Quick Install Guide

Minimum Requirements

- Computer with:**
- + Windows® 7⁴, Windows Vista®⁴, Windows® XP SP2⁴, Windows® 2000⁴, or Mac OS® X (v10.4)⁵
 - + Internet Explorer® v6 or Mozilla® Firefox® v3.0
 - + CD-ROM Drive
 - + Network Interface Card

For Internet Access:

- + Cable or DSL Modem
- + Subscription with an Internet Service Provider (ISP)

For optimal wireless performance, use with D-Link Xtreme N® Desktop PCI Adapter (DWA-552), D-Link Xtreme N® Desktop PCI Express Adapter (DWA-556), or D-Link Wireless N Nano USB Adapter (DWA-131).