



300Mbps Wireless Gigabit Router



WGR-6012

H/W Version: 1

The LevelOne WGR-6012 is the center of your home or office network, you can share a high-speed Internet connection, files and multi-player games with flexibility, speed and simplicity! It supports wireless speeds up to 300Mbps by using LevelOne's *N_Max* wireless technology, while maintaining compatibility with legacy 801.11b/g/n devices. A built-in 4 port full-duplex 10/100/1000 Switch to connect your wired-Ethernet devices brings it all together to maximize your high-speed Internet access.

Wi-Fi Protected Set up

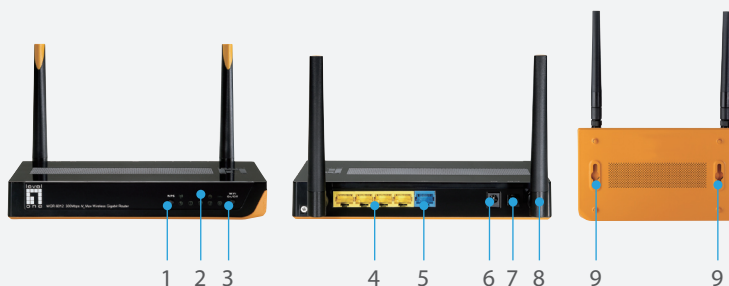
The LevelOne WGR-6012 incorporates WPS (Wi-Fi Protected Setup). By simply clicking the WPS button, you are able to setup a secure wireless connection between your router and WPS supported devices.

Wireless On/Off Button

The Wireless radio is one of the most power intensive components. With a simple push of a button, you can disable the wireless radio when it's not needed.

Green Power Saving

When there are no wireless devices connected to the WGR-6012, it will automatically only keep one antenna active in low power. So when you're sleeping, or away from home or office, wireless signals of your router are turned off which saves power and reduces the risk of someone stealing your internet connection.



1. Wi-Fi Protected Setup (WPS) Button
2. LED Indicators
3. Wireless On/Off Button
4. LAN Port
5. WAN Port
6. Power Port
7. Power On/Off Button
8. Detachable Antenna
9. Wall-Mountable

Key Features

- 2 Antennas with 2T/2R MIMO Technology for Wireless Data Rates of up to 300Mbps
- Compatible with IEEE 802.11b/g/n Standards
- Integrated 4 x 10/100/1000Mbps Ethernet LAN Ports
- Enlarge wireless network coverage through WDS technology
- Effortless wireless security with a simple push of the WPS button
- Concurrent Network Address Translation (NAT) Sessions up to 20,000
- Environmentally Friendly with Smart Power-Saving Features
- Quick and Easy Installation Wizard

Works Well With



GSW-0807
8-Port Gigabit Switch



GNS-2000
2-Bay Gigabit Network Storage

Technical Specification

Standard Compliant

IEEE 802.3, IEEE 802.3u, IEEE802.3ab,
IEEE 802.11b, IEEE 802.11g, IEEE 802.11n,
IEEE 802.11i, IEEE 802.11e,
IEEE 802.1x, IEEE 802.3x,

Hardware Specification

LAN-Interface

4 x 10/100/1000Mbps Auto-MDIX RJ-45 Port

WAN-Interface and Standards

1 x 10/100/1000Mbps Auto-MDIX RJ-45 Port
Static-IP Address, Dynamic IP Address (DHCP Client),

Antenna

2 x 2dBi detachable antennas

Radio

Wireless Data Transfer Rate

802.11n: 300 ~ 78Mbps (20/40Mhz)

802.11g: 54 ~ 6Mbps

802.11b: 11 ~ 1Mbps

Concurrent NAT Session

Concurrent Sessions up to 20,000

Transmit Power@Normal Temp Range

IEEE 802.11b: 19.92 dBm

IEEE 802.11g: 19.83 dBm

IEEE 802.11n HT20: 19.90 dBm

IEEE 802.11n HT40: 19.65 dBm

Number of Channels

(2.412 ~ 2.462 GHz)Ch.1 ~ 11 USA

(2.412 ~ 2.472 GHz)Ch.1 ~ 13 EU

Operating Frequency

2.4 ~ 2.4835 GHz

Software Specification

Wireless Security

WEP 64/128-bit Web share key encryption

WPA, WPA2, 802.1x RADIUS support

128-bit TKIP/AES encryption

SSID Broadcast On/Off

Wi-Fi Protect Setup (WPS) Push Button Support

Firewall

DoS Detection

NAT Firewall with SPI mode

Virtual Server, DMZ

Schedule-Based MAC, IP, Domain and URL Filtering

Other Features

DDNS Supported, UPnP Supported, NTP Time Server, VPN Pass-Through (PPTP, IPSec, L2TP)

Management

Quick Installation Wizard and Easy Setup Utility

Web-Based GUI Configuration

Syslog Monitoring, Email Alert

SNMP Supported

Firmware Upgrade

Web-based (HTTP)

Supported Operating Systems

Windows 2000/XP/Vista/7

Power Saving

Active Link Detection for LAN Ports

Low Power Wireless Mode

Wi-Fi Disable Button

PPPoE, PPTP, L2TP

Connection Scheme

Auto Connect-on-Demand/Auto-Disconnect

Auto Reconnect, Manually Connect/Disconnect

Access Point Modes

WDS - One-to-Many Peer APs (Max: 4)

AP Client

Physical Specification

Power Adapter

DC 12V / 1A

Dimensions: (L x W x H)

187mm x 112mm x 29mm

Certifications

CE, FCC

Environment Specification

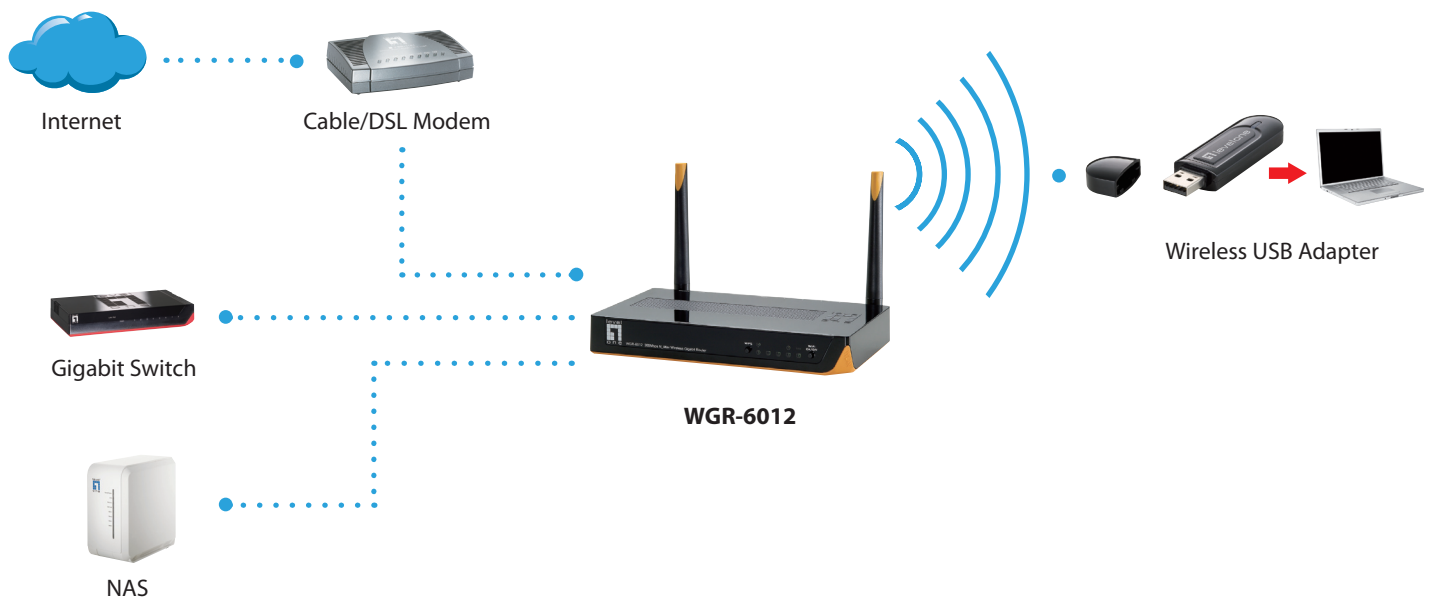
Operating Temperature

0°C ~ 40°C / 10~85% Humidity

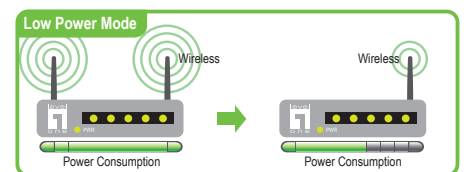
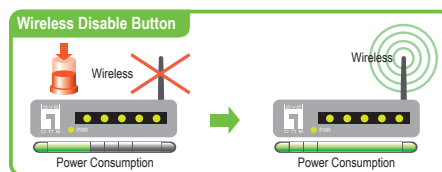
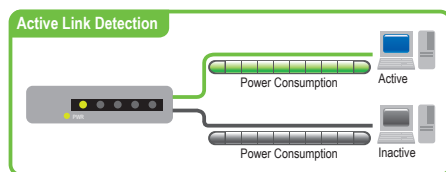
Storage Temperature

-20°C ~ 70°C / 0~95% Humidity

Product Diagram



Power Saving by



Order Information

Package Content

WGR-6012: 300Mbps Wireless Gigabit Router

WGR-6012

RJ-45 Cable

Power Adapter

Quick Installation Guide

CD-Manual/Utility

Antenna x 2